



ASSESSMENT REPORT TITLE PAGE AND SUMMARY

TITLE OF REPORT: **Geological & Geochemical Work on the BBE - Tasse Project, Cariboo Mining Division, British Columbia**

TOTAL COST: **\$32,593.00**

AUTHOR(S): **Rein Turna**

SIGNATURE(S): **"SIGNED"**

NOTICE OF WORK PERMIT NUMBER(S)/DATE(S):

STATEMENT OF WORK EVENT NUMBER(S)/DATE(S): **5664039 (September 15, 2016 to September 11, 2017)**

YEAR OF WORK: **2016 - 2017**

PROPERTY NAME: **BBE - Tasse Property**

CLAIM NAME(S) (on which work was done)

BBE - Tasse (tenure # 1038877 & 1038878)

COMMODITIES SOUGHT: **Copper, Lead, Zinc, Silver & Gold**

MINERAL INVENTORY MINFILE NUMBER(S), IF KNOWN: **N/K**

MINING DIVISION: **Cariboo**

LATITUDE **52.65°**

LONGITUDE **-121.28°**

UTM Zone **10** EASTING **611140** NORTHING **5833065**

OWNER(S): **Barker Minerals Ltd.**

MAILING ADDRESS: **8384 Toombs Drive, Prince George BC, V2K 5A3**

OPERATOR(S) [who paid for the work]: **Barker Minerals Ltd.**

MAILING ADDRESS: **8384 Toombs Drive, Prince George BC, V2K 5A3**

REPORT KEYWORDS (lithology, age, stratigraphy, structure, alteration, mineralization, size and attitude **do not use abbreviations or codes**)

Barkerville Terrane, Silver & Gold

REFERENCES TO PREVIOUS ASSESSMENT WORK AND ASSESSMENT REPORT NUMBERS

9669, 9677, 10252, 10264, 11620, 13154, 15420, 15804, 17696, 19354, 21930, 22599, 22642, 24662, 25752, 26003, 26504, 26805, 27125, 27655, 28248, 28978, 29740, 30764.

TYPE OF WORK IN THIS REPORT	EXTENT OF WORK (in metric units)	ON WHICH CLAIMS	PROJECT COSTS APPORTIONED (incl. support)
GEOLOGICAL (scale, area)			
Ground, mapping	N/A		
Photo interpretation	N/A		
GEOPHYSICAL (line-kilometres)			
Ground	N/A		
Magnetic	N/A		
Electromagnetic	N/A		
Induced Polarization	N/A		
Radiometric	N/A		
Seismic	N/A		
Other	N/A		
Airborne	N/A		
GEOCHEMICAL (number of samples analysed for ...)			
Soil	N/A		
Silt	N/A		
Rock	212	1038877 1038878	\$18,026.30
Other	N/A		
DRILLING (total metres, number of holes, size, storage location)			
Core	N/A		
Non-core	N/A		
RELATED TECHNICAL			
Sampling / Assaying	212	1038877 1038878	\$14,566.70
Petrographic	N/A		
Mineralographic	N/A		
Metallurgic	N/A		
PROSPECTING (scale/area)	N/A		
PREPATORY / PHYSICAL			
Line/grid (km)	N/A		
Topo/Photogrammetric (scale, area)	N/A		
Legal Surveys (scale, area)	N/A		
Road, local access (km)/trail	N/A		
Trench (number/metres)	N/A		
Underground development (metres)	N/A		
Other	N/A		
TOTAL COST			\$32,593.00

**GEOLOGICAL - GEOCHEMICAL
ASSESSMENT REPORT**

on the
TASSE-BBE Property
Cariboo Mining Division, British Columbia

The geographic coordinates of the Black Bear East property are:
52.65° North Latitude and -121.28° West Longitude or
616140 E and 5833065 N UTM coordinates (NAD 83).

The relevant map is:
N.T.S. Map No. 93A/11.

Work was conducted in the area of tenure no's. 1038877 & 1038878
Assessment is applied to the contiguous claims,
tenure nos. 1038877, 1038878, 1038879, 1038880, 1038881 & 1038882



for

Barker Minerals Ltd.
8384 Toombs Drive
Prince George, B.C.
V2K 5A3

Prepared by:
Rein Turna

February 28, 2018

1.0 SUMMARY

212 analyses were made of float rocks in the eastern portion of the BBE-Tasse Property. The work areas were on the eastern (Tasse) portion of the Property though the name of the mineral claim on which work was done is "BBE 1." The target of the geochemical rock sampling was gold-bearing quartz veins.

No gold or significant pathfinder elements were discovered in the area of Tasse explored in 2017. Tasse remains primarily a diamond prospect as suggested in the historical Assessment Report 32209.

TABLE OF CONTENTS

	Page
1.0 SUMMARY	i
2.0 INTRODUCTION	1
3.0 PROPERTY DESCRIPTION and LOCATION	1
4.0 MINERAL CLAIMS	2
5.0 PHYSIOGRAPHY and ACCESSIBILITY.....	3
6.0 HISTORY	3
7.0 REGIONAL and PROPERTY GEOLOGY	3
8.0 EXPLORATION PROGRAM 2017	4
8.1 Sampling and Laboratory Methods	4
9.0 SURVEY RESULTS	5
15.0 CONCLUSIONS	5
11.0 RECOMMENDATIONS	5
11.0 REFERENCE	5

LIST of TABLES

	Page
Table No. 1 Mineral Claim Details.....	2
Table No. 2 Area A XRF Sampling Results.....	after Fig No 4
Table No. 3 Area B XRF Sampling Results.....	after Fig No 5
Table No. 4 Sample Coordinates and Descriptions.....	in Appendix D

LIST of FIGURES

	Page
Figure No. 1 Provincial Location Map	2
Figure No. 2 Tasse Property Location Map.....	after pg 2
Figure No. 3 Tasse Property Keymap and Geology of Areas A and B	4
Figure No. 4 Tasse Property Area A Sample Numbers and Zn, Cu, Au Geochem	4
Figure No. 5 Tasse Property Area B Sample Numbers and Zn, Cu, Au Geochem	4

LIST of APPENDICES

Appendix A	Preparation and Analysis Methods
Appendix B	Statement of Expenditures
Appendix C	Statement of Author's Qualifications
Appendix D	Rock Sample Coordinates and Descriptions

2.0 INTRODUCTION

This report describes the work performed on Barker Minerals Ltd.' BBE-Tasse mineral Property in 2017. The Property is located near Likely, British Columbia. The exploration areas on the west portion of the Property are named Black Bear East or BBE; the eastern portion of the Property is named Tasse. This report describes geochemical rock sampling work done on the eastern (Tasse) portion of the Property in 2017. 212 float rock samples were analyzed for 29 elements.

3.0 PROPERTY DESCRIPTION and LOCATION

The BBE-Tasse Property consists of contiguous claims listed in Table No. 1 – Barker Minerals Ltd. Mineral Claim Details. The property is outlined in Figure No. 2 – BBE-Tasse Property Mineral Claims.

The mineral claims comprising the property are located near Likely in the Cariboo Mining Division in British Columbia and are 100% owned by Barker Minerals Ltd. of Prince George, B.C.

The property is approximately 30 km east of the settlement of Likely and 84 km northeast the City of Williams Lake. The City of Prince George is 180 km to the north.

The geographic coordinates of the BBE-Tasse property are:

52.65° North Latitude and -121.28° West Longitude or
616140 E and 5833065 N UTM coordinates (NAD 83).

The relevant map is:

N.T.S. Map No. 93A/11.

4.0 MINERAL CLAIMS

Table No. 1 – Mineral Claim Details

Note: 'Good to' dates are after assessment has been applied.

<u>Tenure Number</u>	<u>Owner</u>	<u>Good To Date</u>	<u>Status</u>	<u>Area (ha)</u>
1038877	Barker Minerals Ltd. 100%	2018/june/30	GOOD	4517.58
1038878	Barker Minerals Ltd. 100%	2018/june/30	GOOD	1687.54
1038879	Barker Minerals Ltd. 100%	2018/june/30	GOOD	4337.34
1038880	Barker Minerals Ltd. 100%	2018/june/30	GOOD	549.50
1038881	Barker Minerals Ltd. 100%	2018/june/30	GOOD	1412.36
1038882	Barker Minerals Ltd. 100%	2018/june/30	GOOD	1177.51

Total area: 13,681.83 ha

Barker Minerals Ltd.
Tasse Property
British Columbia

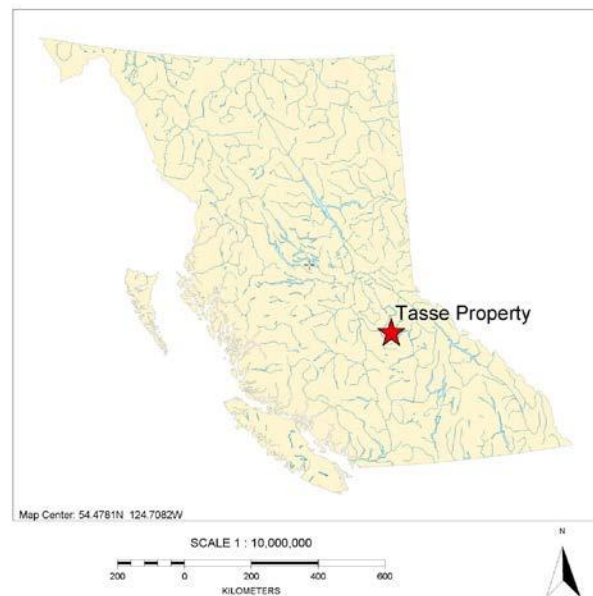
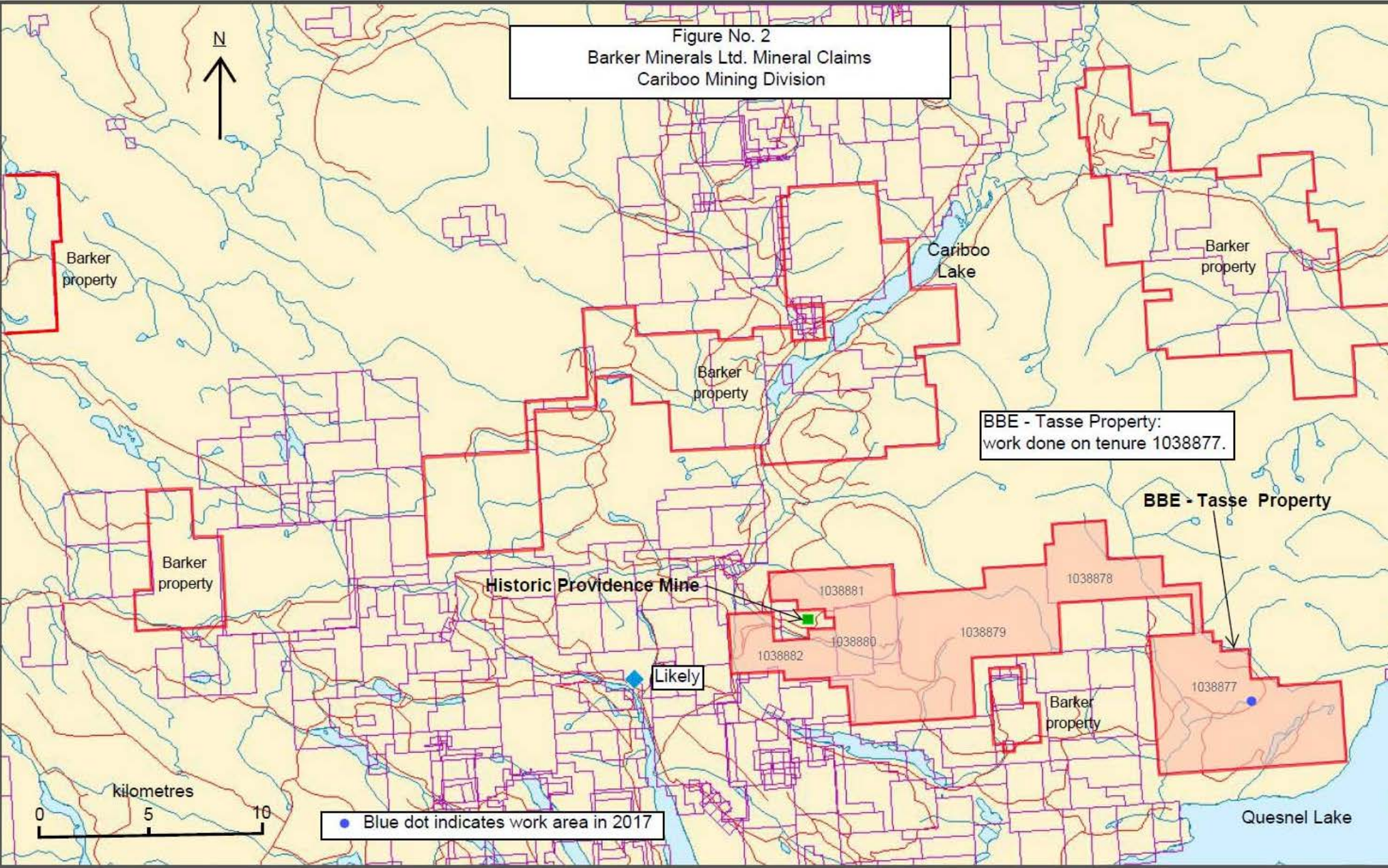


Figure No. 1 Provincial Location Map

Figure No. 2
Barker Minerals Ltd. Mineral Claims
Cariboo Mining Division



5.0 PHYSIOGRAPHY and ACCESSIBILITY

Topography over the Tasse property is mountainous; total relief is approximately 700 metres, between 950 m and 1,650 m. Timber cover is generally heavy; some areas have experienced clear-cut logging. Access to the property is via the Spanish Lake Road from near Likely.

6.0 HISTORY

The Tasse area is generally unexplored. Four mineral claims were staked on the Quesnel Lake shore southwest of Tasse Lake in 1981 and prospected for gold. Samples from quartz veins had anomalous amounts of copper and silver. In 2010 Barker Minerals analyzed rock samples from the Tasse area for diamond indicator minerals (BCGS Assessment Report 32209).

7.0 REGIONAL and PROPERTY GEOLOGY

The Tasse property is situated on the Barkerville Terrane of the western cordillera off the North American craton. The Barkerville Terrane is made up of the Snowshoe Group and Quesnel Lake gneiss. The stratigraphic sequence is not well understood. The region was deformed by intense, complex, in part isoclinal folding and overturning. Locally, strong shear deformation produced mylonitic textures.

The rock units in the Tasse property area are termed by the British Columbia Geological Survey (BCGS) MapPlace digital geology map as:

Hovb – (Holocene basic volcanics).

The occurrence of this unit on the Tasse property is outlined on BCGS geology maps as 3 km x 5 km in area, oriented northwest-southeast. It is coincident with an elongate conical hill with a flat top and a small lake or pond occupying a depression at the very peak (see northwest portion of Figure No. 3). The BCGS has mapped this as Neogene (upper Tertiary) volcanics and considered a part of the Tertiary-Quaternary Chilcotin Group plateau basalt flows that cover much of south-central British Columbia.

The shape of the hill, with a depression and pond on the flat top suggests a possible relatively young volcanic vent. No detailed geological information for this hill is provided in public sources. Rocks in a small quarry on the southeast side of the hill were a mafic breccia with abundant equigranular breccia clasts or xenoliths (to approximately 20 cm size) of olivine and garnet in a medium grey basaltic matrix which also contained small vesicles. The hill and associated breccia or pyroclastic is considered a possible lamproitic vent.

DMQ – (Devonian to Mississippian Quesnel Lake Gneiss).

The Quesnel Lake Gneiss is a Devonian to Mississippian intrusive unit varying in composition from diorite to granite to syenite. It is generally coarse grained, leucocratic,

often with megacrysts of potassium feldspar. The main body is 30 km long; most of the Tasse property is underlain by 6 km x 10 km portion of the intrusive which continues southeast.

uPrPzS – (upper Proterozoic to Paleozoic Snowshoe Group).

Corners of the Tasse property are underlain by the Snowshoe rocks which are Upper Proterozoic to Upper Devonian metasediments, considered correlative in age with Eagle Bay rocks of the Kootenay Terrane to the south. The Snowshoe rocks are dominated by varieties of grit, quartzite, pelite, limestone and volcanoclastic rocks.

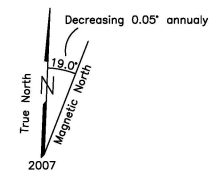
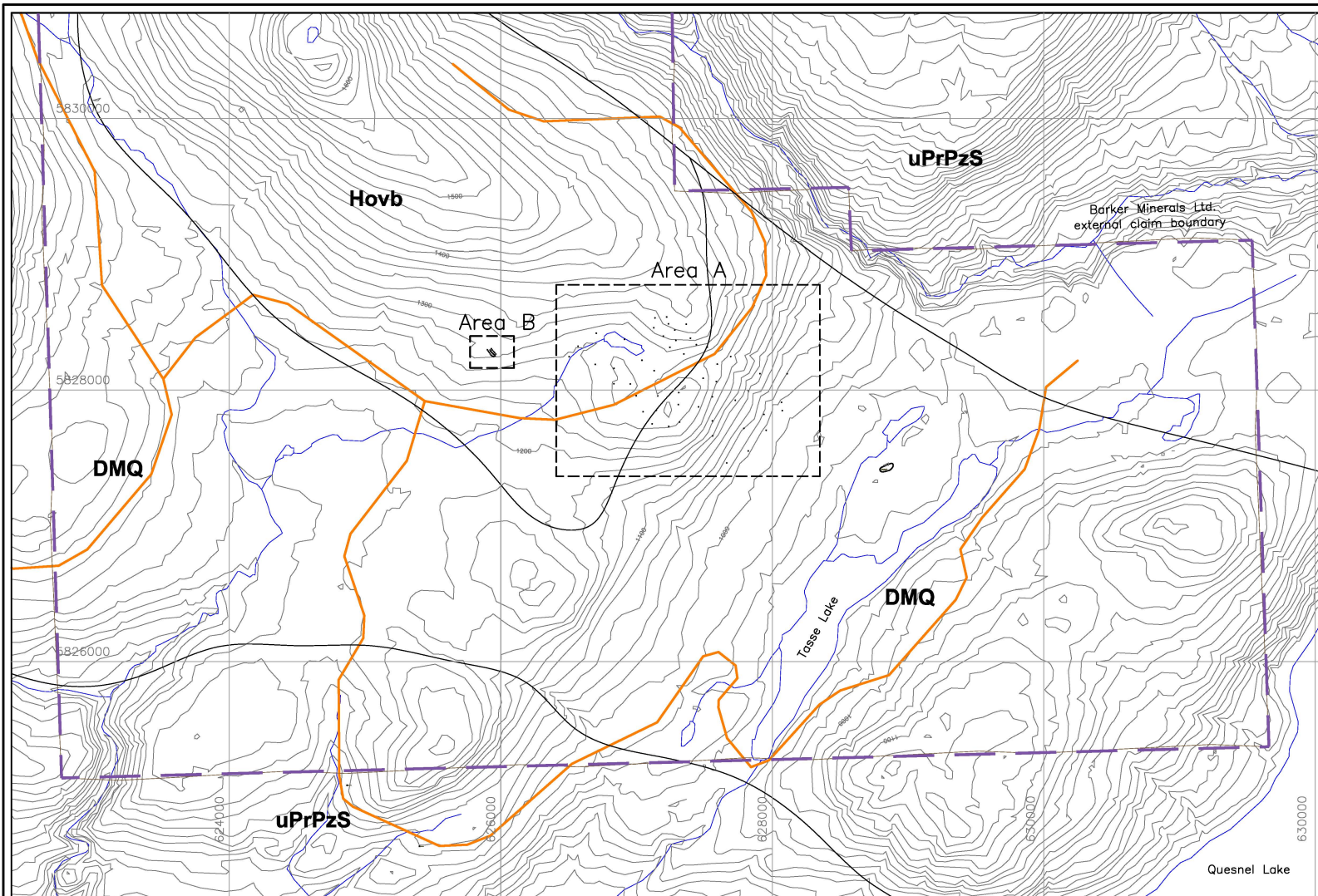
8.0 EXPLORATION PROGRAM 2017

8.1 Sampling Method and Approach

Float rock samples were analyzed for multiple elements using the Niton XL3t handheld X-ray fluorescence analyzer from Thermo Scientific Inc. Further information on this instrument is at the Niton website <http://www.niton.com/en/niton-analyzers-products/xl3/xl3t>. An overview of sample analysis using energy dispersive X-ray fluorescence (EDXRF), adapted from the Niton website, is in Appendix A.

The rocks were analyzed in a manner to determine both their “high grade” and “low grade” values at each site, in order to minimize a “nugget” effect and to determine background values. 212 rock analyses were done.





At each fourth sample location, a GPS waypoint was taken and marked in a notebook, the locations were flagged with tape (Sample Name – Soil or Rock), and any pertinent observations were noted. The XRF analysis method does not replace laboratory assay. It detects the presence or absence of multiple elements in prospecting and, up to a certain point, the intensity of mineralization and correlation among elements in a specimen. The XRF is very useful in analysis for base economic and pathfinder metals though gold (Au) needs to be in relatively high grade in order to be detected by the XRF.



UTM Coordinate System
 Map Datum: NAD 83
 Zone: 10

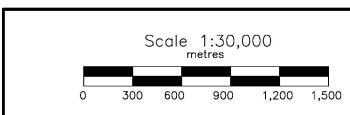
For Area A see Figure No. 4
 For Area B see Figure No. 5

LEGEND

-  Topographic Contour & Elevation
Contour interval 20 metres
-  Creek, Pond
-  Road
-  2017 sample location

GEOLOGY

- Hovb** = Holocene age basaltic volcanics
- DMQ** = Quesnel Lake orthogneiss
- uPrPzS** = Snowshoe Group undivided metamorphics



BARKER MINERALS LTD.

TASSE PROPERTY

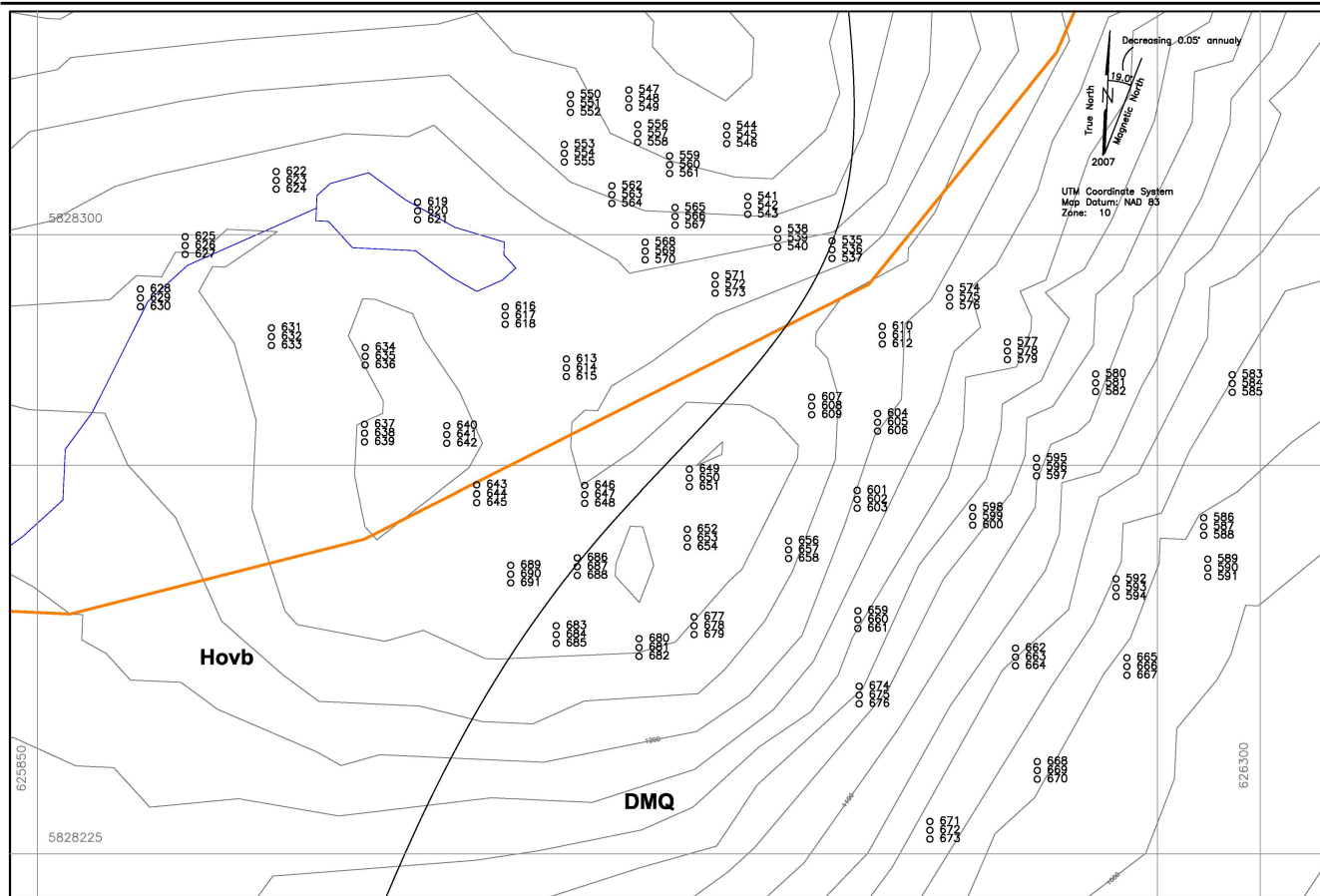
Keymap and Geology
 of Areas A, B

Cariboo Mining Division, B.C.

NTS Mapsheet: 93 A/11

Date: February 28, 2018

Fig.No. 3



Tasse Property Area A
Float Rock Samples XRF Results (ppm)

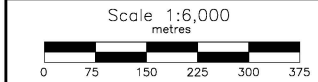
XRF No.	Zn	Cu	Au	XRF No.	Zn	Cu	Au	XRF No.	Zn	Cu	Au
535	< LOD	< LOD	< LOD	587	13	< LOD	< LOD	639	119	63	< LOD
536	55	< LOD	< LOD	588	27	< LOD	< LOD	640	132	61	< LOD
537	124	< LOD	< LOD	589	112	41	< LOD	641	131	< LOD	< LOD
538	130	< LOD	< LOD	590	117	46	< LOD	642	120	58	< LOD
539	123	55	< LOD	591	115	41	< LOD	643	48	< LOD	< LOD
540	142	49	< LOD	592	120	55	< LOD	644	137	46	< LOD
541	191	37	< LOD	593	126	59	< LOD	645	123	56	< LOD
542	123	57	< LOD	594	41	31	< LOD	646	65	27	< LOD
543	143	42	< LOD	595	66	31	< LOD	647	118	53	< LOD
544	104	46	< LOD	596	133	71	< LOD	648	139	56	< LOD
545	101	58	< LOD	597	97	33	< LOD	649	133	61	< LOD
546	119	58	< LOD	598	133	38	< LOD	650	114	41	< LOD
547	17	18	< LOD	599	129	51	< LOD	651	115	72	< LOD
548	127	45	< LOD	600	120	86	< LOD	652	148	51	< LOD
549	100	49	< LOD	601	58	< LOD	< LOD	653	35	74	< LOD
550	115	49	< LOD	602	42	< LOD	< LOD	654	133	71	< LOD
551	115	72	< LOD	603	137	58	< LOD	655	135	46	< LOD
552	106	61	< LOD	604	133	40	< LOD	657	192	47	< LOD
553	92	42	< LOD	605	130	74	< LOD	658	131	64	< LOD
554	133	82	< LOD	606	135	61	< LOD	659	121	< LOD	< LOD
555	117	37	< LOD	607	132	32	< LOD	660	121	40	< LOD
556	41	< LOD	< LOD	608	154	62	< LOD	661	142	69	< LOD
557	139	43	< LOD	609	150	49	< LOD	662	121	44	< LOD
558	86	34	< LOD	610	128	36	< LOD	663	114	60	< LOD
559	85	40	< LOD	611	114	51	< LOD	664	110	68	< LOD
560	56	< LOD	< LOD	612	119	59	< LOD	665	85	< LOD	< LOD
561	82	32	< LOD	613	135	41	< LOD	666	66	117	< LOD
562	38	< LOD	< LOD	614	125	57	< LOD	667	70	30	< LOD
563	61	53	< LOD	615	139	58	< LOD	668	105	87	< LOD
564	105	49	< LOD	616	131	51	< LOD	669	130	81	< LOD
565	128	45	< LOD	617	121	61	< LOD	670	122	75	< LOD
566	135	51	< LOD	618	123	98	< LOD	671	125	65	< LOD
567	114	< LOD	< LOD	619	172	57	< LOD	672	121	71	< LOD
568	81	33	< LOD	620	125	62	< LOD	673	124	81	< LOD
569	131	55	< LOD	621	141	50	< LOD	674	141	45	< LOD
570	115	34	< LOD	622	119	42	< LOD	675	140	35	< LOD
571	119	61	< LOD	623	115	43	< LOD	676	126	42	< LOD
572	111	48	< LOD	624	125	62	< LOD	677	117	64	< LOD
573	115	34	< LOD	625	127	44	< LOD	678	107	37	< LOD
574	140	72	< LOD	626	141	31	< LOD	679	116	58	< LOD
575	134	54	< LOD	627	118	52	< LOD	680	111	43	< LOD
576	148	49	< LOD	628	115	63	< LOD	681	124	37	< LOD
577	126	64	< LOD	629	116	58	< LOD	682	134	< LOD	< LOD
578	107	37	< LOD	630	106	69	< LOD	683	115	43	< LOD
579	107	37	< LOD	631	130	77	< LOD	684	154	66	< LOD
580	113	54	< LOD	632	125	57	< LOD	685	117	55	< LOD
581	139	70	< LOD	633	118	60	< LOD	686	116	77	< LOD
582	116	52	< LOD	634	117	48	< LOD	687	137	47	< LOD
583	119	45	< LOD	635	115	41	< LOD	688	124	86	< LOD
584	128	63	< LOD	636	146	50	< LOD	689	121	54	< LOD
585	131	41	< LOD	637	124	53	< LOD	690	108	52	< LOD
586	45	< LOD	< LOD	638	107	42	< LOD	691	108	58	< LOD

Results below level of detection are indicated <LOD.
Zn results over 120 ppm marked in red.

See Table No. 2 for XRF results.

LEGEND
 Topographic Contour & Elevation
 Contour interval 20 metres
 Creek, Pond
 Road
 ○ 600 Rock sample location and number

Hovb = Holocene age basaltic volcanics
 DMQ = Quesnel Lake orthogneiss



BARKER MINERALS LTD.

TASSE PROPERTY
Area A
Rock Sample Numbers
and Zn, Cu, Au Geochemistry
Cariboo Mining Division, B.C.

NTS Mapsheet: 93 A/11 Date: February 28, 20
Fig.No. 4

Table No. 2
Tasse Area A, XRF Sampling Results

Reading No	Figure No./Area	Type	Units	Field No.	Mo	Zr	Sr	U	Rb	Th	Pb	Se	As	Hg	Au	Zn	W	Cu	Ni	Co	Fe	Mn	Sb	Sn	Cd	Ag	Nb	Y	Bi	Cr	V	Ti	Sc	
XRF No.	Fig. No./Area	Type	Units	Field No.	Mo	Zr	Sr	U	Rb	Th	Pb	Se	As	Hg	Au	Zn	W	Cu	Ni	Co	Fe	Mn	Sb	Sn	Cd	Ag	Nb	Y	Bi	Cr	V	Ti	Sc	
535	Fig 4/Area A	Float	ppm	Tas-f17-1	< LOD	< LOD	< LOD	376	< LOD	< LOD	< LOD	< LOD	< LOD	< LOD	< LOD	< LOD	< LOD	< LOD	< LOD	2014	< LOD	34720	< LOD	< LOD	< LOD	< LOD	< LOD	8	< LOD	< LOD	< LOD	< LOD	.	
536	Fig 4/Area A	Float	ppm	Tas-f17-1a	8	201	88	< LOD	12	11	< LOD	< LOD	5	< LOD	< LOD	55	< LOD	27	< LOD	< LOD	18700	471	< LOD	< LOD	< LOD	< LOD	12	2	< LOD	< LOD	< LOD	< LOD	.	
537	Fig 4/Area A	Float	ppm	Tas-f17-1b	11	209	487	11	14	24	< LOD	< LOD	9	< LOD	< LOD	124	< LOD	< LOD	< LOD	< LOD	91529	< LOD	< LOD	< LOD	< LOD	< LOD	46	3	< LOD	< LOD	< LOD	< LOD	.	
538	Fig 4/Area A	Float	ppm	Tas-f17-2	7	249	295	< LOD	7	21	< LOD	< LOD	< LOD	< LOD	< LOD	130	< LOD	< LOD	< LOD	< LOD	103468	< LOD	< LOD	< LOD	< LOD	< LOD	55	3	< LOD	< LOD	< LOD	< LOD	.	
539	Fig 4/Area A	Float	ppm	Tas-f17-2a	< LOD	244	377	< LOD	8	15	< LOD	< LOD	< LOD	< LOD	< LOD	123	< LOD	55	< LOD	< LOD	106648	< LOD	< LOD	< LOD	< LOD	< LOD	48	3	< LOD	< LOD	< LOD	< LOD	18064	
540	Fig 4/Area A	Float	ppm	Tas-f17-2b	< LOD	210	386	< LOD	9	< LOD	< LOD	< LOD	< LOD	< LOD	< LOD	142	< LOD	49	< LOD	< LOD	95654	< LOD	< LOD	< LOD	< LOD	< LOD	41	3	< LOD	< LOD	< LOD	< LOD	10479	
541	Fig 4/Area A	Float	ppm	Tas-f17-3	10	256	608	< LOD	12	30	< LOD	< LOD	10	< LOD	< LOD	191	< LOD	37	< LOD	< LOD	99878	< LOD	52	42	< LOD	< LOD	55	4	< LOD	< LOD	< LOD	< LOD	.	
542	Fig 4/Area A	Float	ppm	Tas-f17-3a	< LOD	214	433	< LOD	10	< LOD	< LOD	< LOD	< LOD	< LOD	< LOD	123	< LOD	57	< LOD	< LOD	95575	< LOD	< LOD	< LOD	< LOD	< LOD	43	3	< LOD	< LOD	< LOD	< LOD	.	
543	Fig 4/Area A	Float	ppm	Tas-f17-3b	5	130	54	< LOD	< LOD	< LOD	< LOD	206	< LOD	30	< LOD	< LOD	143	< LOD	42	< LOD	< LOD	90435	< LOD	< LOD	< LOD	< LOD	< LOD	24	2	< LOD	< LOD	< LOD	< LOD	.
544	Fig 4/Area A	Float	ppm	Tas-f17-4	< LOD	228	291	< LOD	5	< LOD	< LOD	< LOD	8	< LOD	< LOD	104	< LOD	46	< LOD	< LOD	98881	< LOD	< LOD	< LOD	< LOD	< LOD	46	3	< LOD	< LOD	< LOD	< LOD	.	
545	Fig 4/Area A	Float	ppm	Tas-f17-4a	< LOD	183	348	< LOD	8	< LOD	< LOD	< LOD	< LOD	< LOD	< LOD	101	< LOD	58	< LOD	< LOD	86993	< LOD	< LOD	< LOD	< LOD	< LOD	34	2	< LOD	< LOD	< LOD	< LOD	.	
546	Fig 4/Area A	Float	ppm	Tas-f17-4b	< LOD	195	424	< LOD	11	< LOD	< LOD	< LOD	< LOD	< LOD	< LOD	119	< LOD	58	< LOD	< LOD	94233	< LOD	< LOD	< LOD	< LOD	< LOD	40	3	< LOD	< LOD	< LOD	< LOD	.	
547	Fig 4/Area A	Float	ppm	Tas-f17-5	< LOD	116	664	< LOD	2	6	29	< LOD	< LOD	< LOD	< LOD	17	< LOD	18	< LOD	< LOD	1447	264	< LOD	< LOD	< LOD	< LOD	< LOD	< LOD	< LOD	< LOD	< LOD	< LOD	.	
548	Fig 4/Area A	Float	ppm	Tas-f17-5a	< LOD	198	479	< LOD	10	< LOD	< LOD	< LOD	< LOD	< LOD	< LOD	127	< LOD	45	< LOD	< LOD	89386	2877	< LOD	< LOD	< LOD	< LOD	36	3	< LOD	< LOD	< LOD	< LOD	.	
549	Fig 4/Area A	Float	ppm	Tas-f17-5b	< LOD	173	370	< LOD	16	17	< LOD	< LOD	< LOD	< LOD	< LOD	100	< LOD	49	< LOD	< LOD	84536	< LOD	< LOD	< LOD	< LOD	< LOD	32	2	< LOD	< LOD	< LOD	< LOD	.	
550	Fig 4/Area A	Float	ppm	Tas-f17-6	< LOD	191	452	< LOD	10	< LOD	< LOD	< LOD	< LOD	< LOD	< LOD	115	< LOD	49	< LOD	< LOD	90012	< LOD	< LOD	< LOD	< LOD	< LOD	40	2	< LOD	< LOD	< LOD	< LOD	.	
551	Fig 4/Area A	Float	ppm	Tas-f17-6a	< LOD	170	375	< LOD	13	< LOD	< LOD	< LOD	15	< LOD	< LOD	115	< LOD	72	< LOD	< LOD	79008	< LOD	< LOD	< LOD	< LOD	< LOD	37	2	< LOD	< LOD	< LOD	< LOD	.	
552	Fig 4/Area A	Float	ppm	Tas-f17-6b	< LOD	208	292	< LOD	21	< LOD	< LOD	< LOD	< LOD	< LOD	< LOD	106	< LOD	61	< LOD	< LOD	102319	< LOD	< LOD	< LOD	< LOD	< LOD	38	3	< LOD	< LOD	< LOD	< LOD	18391	
553	Fig 4/Area A	Float	ppm	Tas-f17-7	< LOD	135	252	9	31	16	< LOD	< LOD	6	< LOD	< LOD	92	< LOD	42	< LOD	< LOD	52496	879	< LOD	< LOD	< LOD	< LOD	16	2	< LOD	< LOD	< LOD	< LOD	.	
554	Fig 4/Area A	Float	ppm	Tas-f17-7a	< LOD	199	444	< LOD	13	< LOD	< LOD	< LOD	< LOD	< LOD	< LOD	133	< LOD	82	< LOD	< LOD	95296	< LOD	< LOD	< LOD	< LOD	< LOD	39	2	< LOD	< LOD	< LOD	< LOD	.	
555	Fig 4/Area A	Float	ppm	Tas-f17-7b	< LOD	182	403	< LOD	12	< LOD	19	< LOD	< LOD	< LOD	< LOD	117	< LOD	37	< LOD	< LOD	85920	< LOD	< LOD	< LOD	< LOD	< LOD	37	2	< LOD	< LOD	< LOD	< LOD	.	
556	Fig 4/Area A	Float	ppm	Tas-f17-8	< LOD	107	492	9	5	< LOD	25	< LOD	< LOD	< LOD	< LOD	41	< LOD	< LOD	< LOD	< LOD	20941	< LOD	< LOD	< LOD	< LOD	< LOD	7	2	< LOD	< LOD	< LOD	< LOD	.	
557	Fig 4/Area A	Float	ppm	Tas-f17-8a	< LOD	184	453	< LOD	10	< LOD	21	< LOD	9	< LOD	< LOD	139	< LOD	43	< LOD	< LOD	90219	< LOD	< LOD	< LOD	< LOD	< LOD	34	3	< LOD	< LOD	< LOD	< LOD	.	
558	Fig 4/Area A	Float	ppm	Tas-f17-8b	< LOD	135	115	< LOD	27	18	< LOD	< LOD	< LOD	< LOD	< LOD	86	< LOD	34	< LOD	< LOD	46413	< LOD	< LOD	< LOD	< LOD	< LOD	17	2	< LOD	< LOD	< LOD	< LOD	.	
559	Fig 4/Area A	Float	ppm	Tas-f17-9	< LOD	118	133	< LOD	60	13	17	< LOD	< LOD	< LOD	< LOD	85	< LOD	40	< LOD	< LOD	56947	< LOD	< LOD	< LOD	< LOD	< LOD	20	3	< LOD	< LOD	< LOD	< LOD	.	
560	Fig 4/Area A	Float	ppm	Tas-f17-9a	< LOD	108	235	< LOD	50	15	17	< LOD	< LOD	< LOD	< LOD	56	< LOD	< LOD	< LOD	< LOD	41463	< LOD	< LOD	< LOD	< LOD	< LOD	16	2	< LOD	< LOD	< LOD	< LOD	.	
561	Fig 4/Area A	Float	ppm	Tas-f17-9b	< LOD	113	222	< LOD	57	12	20	< LOD	< LOD	< LOD	< LOD	82	< LOD	32	< LOD	< LOD	48268	< LOD	< LOD	< LOD	< LOD	< LOD	19	2	< LOD	< LOD	< LOD	< LOD	.	
562	Fig 4/Area A	Float	ppm	Tas-f17-10	< LOD	106	65	< LOD	42	23	< LOD	< LOD	< LOD	< LOD	< LOD	38	< LOD	< LOD	< LOD	< LOD	23867	< LOD	< LOD	< LOD	< LOD	< LOD	8	< LOD	< LOD	< LOD	< LOD	.		
563	Fig 4/Area A	Float	ppm	Tas-f17-10a	< LOD	119	70	< LOD	39	16	< LOD	< LOD	< LOD	< LOD	< LOD	61	< LOD	53	< LOD	< LOD	24078	378	< LOD	< LOD	< LOD	< LOD	10	< LOD	< LOD	< LOD	< LOD	.		
564	Fig 4/Area A	Float	ppm	Tas-f17-10b	< LOD	295	37	9	84	41	< LOD	< LOD	< LOD	< LOD	< LOD	105	38	49	160	< LOD	90217	1241	< LOD	< LOD	< LOD	< LOD	19	4	< LOD	< LOD	< LOD	< LOD	.	
565	Fig 4/Area A	Float	ppm	Tas-f17-11	< LOD	212	258	< LOD	4	< LOD	< LOD	< LOD	< LOD	< LOD	< LOD	128	< LOD	45	< LOD	< LOD	94969	< LOD	< LOD	< LOD	< LOD	< LOD	41	3	< LOD	< LOD	< LOD	< LOD	.	
566	Fig 4/Area A	Float	ppm	Tas-f17-11a	< LOD	231	251	< LOD	3	< LOD	< LOD	< LOD	12	< LOD	< LOD	135	< LOD	51	< LOD	< LOD	103740	< LOD	< LOD	< LOD	< LOD	< LOD	43	4	< LOD	< LOD	< LOD	< LOD	19329	
567	Fig 4/Area A	Float	ppm	Tas-f17-11b	< LOD	167	116	< LOD	3	27	47	< LOD	22	< LOD	< LOD	114	198	< LOD	< LOD	< LOD	68945	< LOD	< LOD	< LOD	< LOD	< LOD	36	3	< LOD	< LOD	< LOD	< LOD	.	
568	Fig 4/Area A	Float	ppm	Tas-f17-12	< LOD	135	341	< LOD	18	< LOD	< LOD	< LOD	< LOD	< LOD	< LOD	81	< LOD	33	< LOD	< LOD	65336	< LOD	< LOD	< LOD	< LOD	< LOD	21	< LOD	< LOD	< LOD	< LOD	.		
569	Fig 4/Area A	Float	ppm	Tas-f17-12a	< LOD	184	259	< LOD	5	< LOD	< LOD	< LOD	< LOD	< LOD	< LOD	131	< LOD	55	< LOD	< LOD	99694	< LOD	< LOD	< LOD	< LOD	< LOD	36	3	< LOD	< LOD	< LOD	< LOD	.	
570	Fig 4/Area A	Float	ppm	Tas-f17-12b	< LOD	179	346	< LOD	8	< LOD	< LOD	< LOD	7	< LOD	< LOD	115	< LOD	34	< LOD	< LOD	94217	< LOD	< LOD	< LOD	< LOD	< LOD	35	3	< LOD	< LOD	< LOD	< LOD	.	
571	Fig 4/Area A	Float	ppm	Tas-f17-13	< LOD	195	296	< LOD	6	< LOD	< LOD	< LOD	< LOD	< LOD	< LOD	119	< LOD	61	< LOD	< LOD	95513	< LOD	< LOD	< LOD	< LOD	< LOD	38	3	< LOD	< LOD	< LOD	< LOD	.	
572	Fig 4/Area A	Float	ppm	Tas-f17-13a	< LOD	229	67	< LOD	7	< LOD	< LOD	< LOD	< LOD	< LOD	< LOD	111	< LOD	48	77	< LOD	137104	< LOD	< LOD	< LOD	< LOD	< LOD	41	2	< LOD	< LOD	< LOD	< LOD	22023	
573	Fig 4/Area A	Float	ppm	Tas-f17-13b	< LOD	226	160	< LOD	5	< LOD	< LOD	< LOD	8	< LOD	< LOD	115	< LOD	34	< LOD	< LOD	115680	< LOD	< LOD	< LOD	< LOD	< LOD	43	2	< LOD	< LOD	< LOD	< LOD	.	
574	Fig 4/Area A	Float	ppm	Tas-f17-14	< LOD	213	519	17	11	< LOD	< LOD	< LOD	8	< LOD	< LOD	140	< LOD	72	< LOD	< LOD	92812	< LOD	< LOD	< LOD	< LOD	< LOD	38	3	< LOD	< LOD	< LOD	< LOD	.	
575	Fig 4/Area A	Float	ppm	Tas-f17-14a	< LOD	218	500	11	12	< LOD	< LOD	< LOD	< LOD	< LOD	< LOD	134	< LOD	54	< LOD	< LOD	100339	< LOD	< LOD	< LOD	< LOD	< LOD	42	3	< LOD	< LOD	< LOD	< LOD	.	
576	Fig 4/Area A	Float	ppm	Tas-f17-14b	5	204	489	< LOD	12	< LOD	< LOD	< LOD	< LOD	< LOD	< LOD	148	< LOD	49	< LOD	< LOD	96278	< LOD	< LOD	< LOD	< LOD	< LOD	39	3	< LOD	< LOD	< LOD	< LOD	.	
577	Fig 4/Area A	Float	ppm	Tas-f17-15	< LOD	178	300	< LOD	8	< LOD	< LOD	< LOD	< LOD	< LOD	< LOD	126	< LOD	64	< LOD	< LOD	92204	< LOD	< LOD	< LOD	< LOD	< LOD	33	2	< LOD	< LOD	< LOD	< LOD	.	
578	Fig 4/Area A	Float	ppm	Tas-f17-15a	< LOD	138	277	< LOD	7	15	< LOD	< LOD	< LOD																					

Table No. 2
Tasse Area A, XRF Sampling Results

580	Fig 4/Area A	Float	ppm	Tas-f17-16	< LOD	162	367 < LOD	9 < LOD	< LOD	< LOD	< LOD	< LOD	< LOD	113 < LOD	54 < LOD	< LOD	< LOD	< LOD	< LOD	< LOD	33	2 < LOD	< LOD	< LOD	< LOD
581	Fig 4/Area A	Float	ppm	Tas-f17-16a	< LOD	178	388 < LOD	13 < LOD	< LOD	< LOD	9 < LOD	< LOD	< LOD	139 < LOD	70 < LOD	< LOD	< LOD	< LOD	< LOD	< LOD	37	2 < LOD	< LOD	< LOD	< LOD
582	Fig 4/Area A	Float	ppm	Tas-f17-16b	< LOD	189	424	9	9 < LOD	< LOD	< LOD	< LOD	< LOD	116 < LOD	52 < LOD	< LOD	< LOD	< LOD	< LOD	< LOD	38	3 < LOD	< LOD	< LOD	19743
583	Fig 4/Area A	Float	ppm	Tas-f17-17	< LOD	201	475 < LOD	12 < LOD	< LOD	< LOD	< LOD	< LOD	< LOD	119 < LOD	45 < LOD	< LOD	< LOD	< LOD	< LOD	< LOD	39	3 < LOD	< LOD	< LOD	< LOD
584	Fig 4/Area A	Float	ppm	Tas-f17-17a	5	204	479 < LOD	12	19 < LOD	< LOD	10 < LOD	< LOD	128 < LOD	63 < LOD	< LOD	< LOD	< LOD	< LOD	< LOD	< LOD	41	2 < LOD	< LOD	< LOD	< LOD
585	Fig 4/Area A	Float	ppm	Tas-f17-17b	< LOD	201	477 < LOD	12 < LOD	< LOD	< LOD	7 < LOD	< LOD	131 < LOD	41 < LOD	< LOD	< LOD	< LOD	< LOD	< LOD	< LOD	41	2 < LOD	< LOD	< LOD	< LOD
586	Fig 4/Area A	Float	ppm	Tas-f17-18	< LOD	111	96 < LOD	8	8 < LOD	< LOD	< LOD	< LOD	45 < LOD	< LOD	< LOD	< LOD	< LOD	< LOD	< LOD	< LOD	8	< LOD	< LOD	< LOD	< LOD
587	Fig 4/Area A	Float	ppm	Tas-f17-18a	< LOD	54	38 < LOD	3	6 < LOD	< LOD	< LOD	< LOD	13 < LOD	< LOD	< LOD	< LOD	7540	316	< LOD	< LOD	< LOD	< LOD	< LOD	< LOD	< LOD
588	Fig 4/Area A	Float	ppm	Tas-f17-18b	< LOD	173	399 < LOD	10 < LOD	< LOD	< LOD	< LOD	< LOD	117 < LOD	40 < LOD	< LOD	< LOD	< LOD	< LOD	< LOD	< LOD	36	2 < LOD	< LOD	< LOD	< LOD
589	Fig 4/Area A	Float	ppm	Tas-f17-19	< LOD	164	392 < LOD	9	18 < LOD	< LOD	11 < LOD	< LOD	112 < LOD	41 < LOD	< LOD	< LOD	79109	< LOD	< LOD	< LOD	33	3 < LOD	< LOD	< LOD	< LOD
590	Fig 4/Area A	Float	ppm	Tas-f17-19a	< LOD	185	401 < LOD	11	19 < LOD	< LOD	< LOD	< LOD	117 < LOD	46 < LOD	< LOD	< LOD	93004	< LOD	< LOD	< LOD	34	2 < LOD	< LOD	< LOD	< LOD
591	Fig 4/Area A	Float	ppm	Tas-f17-19b	< LOD	177	424 < LOD	10 < LOD	< LOD	< LOD	< LOD	< LOD	115 < LOD	41 < LOD	< LOD	< LOD	85462	< LOD	< LOD	< LOD	35	2 < LOD	< LOD	< LOD	< LOD
592	Fig 4/Area A	Float	ppm	Tas-f17-20	< LOD	181	283 < LOD	8	15 < LOD	< LOD	8 < LOD	< LOD	120 < LOD	55 < LOD	< LOD	< LOD	97755	< LOD	< LOD	< LOD	35	3 < LOD	< LOD	< LOD	20305
593	Fig 4/Area A	Float	ppm	Tas-f17-20a	< LOD	200	218 < LOD	11	17 < LOD	< LOD	< LOD	< LOD	126 < LOD	59 < LOD	< LOD	< LOD	101945	< LOD	< LOD	< LOD	38	3 < LOD	< LOD	< LOD	< LOD
594	Fig 4/Area A	Float	ppm	Tas-f17-20b	< LOD	39	114 < LOD	5 < LOD	< LOD	< LOD	< LOD	< LOD	41 < LOD	31 < LOD	< LOD	< LOD	21105	2190	< LOD	< LOD	10	< LOD	< LOD	< LOD	1916
595	Fig 4/Area A	Float	ppm	Tas-f17-21	< LOD	123	418 < LOD	22 < LOD	30	< LOD	< LOD	< LOD	66 < LOD	31 < LOD	< LOD	< LOD	38840	687	< LOD	< LOD	18	< LOD	< LOD	< LOD	< LOD
596	Fig 4/Area A	Float	ppm	Tas-f17-21a	6	196	490 < LOD	11 < LOD	< LOD	< LOD	9 < LOD	< LOD	133 < LOD	71 < LOD	< LOD	< LOD	88039	< LOD	< LOD	< LOD	39	3 < LOD	< LOD	< LOD	< LOD
597	Fig 4/Area A	Float	ppm	Tas-f17-21b	< LOD	174	413 < LOD	11 < LOD	< LOD	< LOD	< LOD	< LOD	97 < LOD	33 < LOD	< LOD	< LOD	79438	< LOD	< LOD	< LOD	33	2 < LOD	< LOD	< LOD	< LOD
598	Fig 4/Area A	Float	ppm	Tas-f17-22	< LOD	197	469 < LOD	12 < LOD	< LOD	< LOD	< LOD	< LOD	133 < LOD	38 < LOD	< LOD	< LOD	91963	< LOD	< LOD	< LOD	38	2 < LOD	< LOD	< LOD	< LOD
599	Fig 4/Area A	Float	ppm	Tas-f17-22a	< LOD	191	446 < LOD	13	17 < LOD	< LOD	11 < LOD	< LOD	129 < LOD	51 < LOD	< LOD	< LOD	92042	< LOD	< LOD	< LOD	40	2 < LOD	< LOD	< LOD	< LOD
600	Fig 4/Area A	Float	ppm	Tas-f17-22b	< LOD	182	417 < LOD	10 < LOD	< LOD	< LOD	< LOD	< LOD	120 < LOD	86 < LOD	< LOD	< LOD	87157	< LOD	< LOD	< LOD	37	3 < LOD	< LOD	< LOD	< LOD
601	Fig 4/Area A	Float	ppm	Tas-f17-23	< LOD	76	268 < LOD	42 < LOD	25	< LOD	< LOD	< LOD	58 < LOD	< LOD	< LOD	< LOD	23930	1265	< LOD	< LOD	6	< LOD	< LOD	< LOD	< LOD
602	Fig 4/Area A	Float	ppm	Tas-f17-23a	< LOD	208	384	8	30	13	29 < LOD	< LOD	42 < LOD	< LOD	< LOD	< LOD	17600	464	< LOD	< LOD	8	< LOD	< LOD	< LOD	< LOD
603	Fig 4/Area A	Float	ppm	Tas-f17-23b	< LOD	198	417 < LOD	13 < LOD	< LOD	< LOD	< LOD	< LOD	137 < LOD	58 < LOD	< LOD	< LOD	99790	< LOD	< LOD	< LOD	39	3 < LOD	< LOD	< LOD	< LOD
604	Fig 4/Area A	Float	ppm	Tas-f17-24	< LOD	182	440 < LOD	11 < LOD	< LOD	< LOD	9 < LOD	< LOD	133 < LOD	40 < LOD	< LOD	< LOD	83330	< LOD	< LOD	< LOD	34	2 < LOD	< LOD	< LOD	< LOD
605	Fig 4/Area A	Float	ppm	Tas-f17-24a	< LOD	204	483 < LOD	12 < LOD	< LOD	< LOD	< LOD	< LOD	130 < LOD	74	118 < LOD	< LOD	90443	< LOD	< LOD	< LOD	40	3 < LOD	< LOD	< LOD	< LOD
606	Fig 4/Area A	Float	ppm	Tas-f17-24b	< LOD	224	541 < LOD	13 < LOD	< LOD	< LOD	< LOD	< LOD	135 < LOD	61	87 < LOD	< LOD	103962	< LOD	< LOD	< LOD	45	3 < LOD	< LOD	< LOD	< LOD
607	Fig 4/Area A	Float	ppm	Tas-f17-25	< LOD	189	234 < LOD	5 < LOD	< LOD	< LOD	< LOD	< LOD	132 < LOD	34 < LOD	< LOD	< LOD	96785	< LOD	< LOD	< LOD	37	3 < LOD	< LOD	< LOD	< LOD
608	Fig 4/Area A	Float	ppm	Tas-f17-25a	< LOD	207	350 < LOD	9	19 < LOD	< LOD	< LOD	< LOD	154 < LOD	62 < LOD	< LOD	< LOD	108045	< LOD	< LOD	< LOD	42	3 < LOD	< LOD	< LOD	< LOD
609	Fig 4/Area A	Float	ppm	Tas-f17-25b	< LOD	214	354 < LOD	9 < LOD	< LOD	< LOD	< LOD	< LOD	150 < LOD	49 < LOD	< LOD	< LOD	110383	< LOD	< LOD	< LOD	40	3 < LOD	< LOD	< LOD	17807
610	Fig 4/Area A	Float	ppm	Tas-f17-26	< LOD	217	178 < LOD	4 < LOD	< LOD	< LOD	8 < LOD	< LOD	128 < LOD	36 < LOD	< LOD	< LOD	112777	< LOD	< LOD	< LOD	40	3 < LOD	< LOD	< LOD	< LOD
611	Fig 4/Area A	Float	ppm	Tas-f17-26a	< LOD	216	155 < LOD	3 < LOD	< LOD	< LOD	< LOD	< LOD	114 < LOD	51 < LOD	< LOD	< LOD	116352	< LOD	< LOD	< LOD	37	3 < LOD	< LOD	< LOD	20343
612	Fig 4/Area A	Float	ppm	Tas-f17-26b	< LOD	250	90 < LOD	< LOD	< LOD	< LOD	< LOD	< LOD	119 < LOD	59 < LOD	< LOD	< LOD	128908	< LOD	< LOD	< LOD	47	3 < LOD	< LOD	< LOD	24516
613	Fig 4/Area A	Float	ppm	Tas-f17-27	< LOD	203	230 < LOD	6 < LOD	< LOD	< LOD	8 < LOD	< LOD	135 < LOD	41 < LOD	< LOD	< LOD	110107	< LOD	< LOD	< LOD	39	3 < LOD	110 < LOD	< LOD	13883 < LOD
614	Fig 4/Area A	Float	ppm	Tas-f17-27a	< LOD	212	164 < LOD	2 < LOD	< LOD	< LOD	9 < LOD	< LOD	125 < LOD	57 < LOD	< LOD	< LOD	116969	< LOD	< LOD	< LOD	42	3 < LOD	< LOD	496	16224 < LOD
615	Fig 4/Area A	Float	ppm	Tas-f17-27b	< LOD	191	247 < LOD	8 < LOD	< LOD	< LOD	< LOD	< LOD	139 < LOD	58 < LOD	< LOD	< LOD	103582	< LOD	< LOD	< LOD	39	3 < LOD	< LOD	< LOD	< LOD
616	Fig 4/Area A	Float	ppm	Tas-f17-28	< LOD	196	466 < LOD	12 < LOD	< LOD	< LOD	< LOD	< LOD	131 < LOD	51 < LOD	< LOD	< LOD	91898	< LOD	< LOD	< LOD	38	3 < LOD	< LOD	< LOD	< LOD
617	Fig 4/Area A	Float	ppm	Tas-f17-28a	5	191	467 < LOD	13 < LOD	< LOD	< LOD	< LOD	< LOD	121 < LOD	61 < LOD	< LOD	< LOD	90919	< LOD	< LOD	< LOD	39	3 < LOD	< LOD	< LOD	11119 < LOD
618	Fig 4/Area A	Float	ppm	Tas-f17-28b	< LOD	205	504 < LOD	11	19 < LOD	< LOD	8 < LOD	< LOD	123 < LOD	58 < LOD	< LOD	< LOD	94519	< LOD	< LOD	< LOD	41	3 < LOD	< LOD	115 < LOD	13141 < LOD
619	Fig 4/Area A	Float	ppm	Tas-f17-29	< LOD	218	530 < LOD	12	15 < LOD	< LOD	7 < LOD	< LOD	172 < LOD	57	101 < LOD	< LOD	95939	< LOD	< LOD	< LOD	43	3 < LOD	110 < LOD	< LOD	12531
620	Fig 4/Area A	Float	ppm	Tas-f17-29a	< LOD	205	495 < LOD	15	18 < LOD	< LOD	11 < LOD	< LOD	125 < LOD	62 < LOD	< LOD	< LOD	96340	< LOD	< LOD	< LOD	41	3 < LOD	100	140	11899 < LOD
621	Fig 4/Area A	Float	ppm	Tas-f17-29b	5	195	434 < LOD	16 < LOD	< LOD	< LOD	< LOD	< LOD	141 < LOD	50 < LOD	< LOD	< LOD	93175	< LOD	< LOD	< LOD	40	2 < LOD	196 < LOD	< LOD	10824 < LOD
622	Fig 4/Area A	Float	ppm	Tas-f17-30	< LOD	179	417 < LOD	12 < LOD	< LOD	< LOD	< LOD	< LOD	119 < LOD	42 < LOD	< LOD	< LOD	89357	< LOD	< LOD	< LOD	33	3 < LOD	< LOD	< LOD	< LOD
623	Fig 4/Area A	Float	ppm	Tas-f17-30a	< LOD	192	451 < LOD	14 < LOD	< LOD	< LOD	< LOD	< LOD	115 < LOD	43 < LOD	< LOD	< LOD	96401	< LOD	< LOD	< LOD	38	3 < LOD	< LOD	< LOD	< LOD
624	Fig 4/Area A	Float	ppm	Tas-f17-30b	< LOD	189	437 < LOD	14 < LOD	< LOD	< LOD	< LOD	< LOD	125 < LOD	52	90 < LOD	< LOD	93467	< LOD	< LOD	< LOD	34	2 < LOD	< LOD	415	11846 < LOD
625	Fig 4/Area A	Float	ppm	Tas-f17-31	< LOD	220	554 < LOD	13	17 < LOD	< LOD	< LOD	< LOD	127 < LOD	44 < LOD	< LOD	< LOD	93106	< LOD	< LOD	< LOD	45	2 < LOD	< LOD	< LOD	< LOD
626	Fig 4/Area A	Float	ppm	Tas-f17-31a	< LOD	230	580 < LOD	13 < LOD	< LOD	< LOD	< LOD	< LOD	141 < LOD	31 < LOD	< LOD	< LOD	93994	< LOD	< LOD	< LOD	44	3 < LOD	65	231	10652 < LOD

Table No. 2
Tasse Area A, XRF Sampling Results

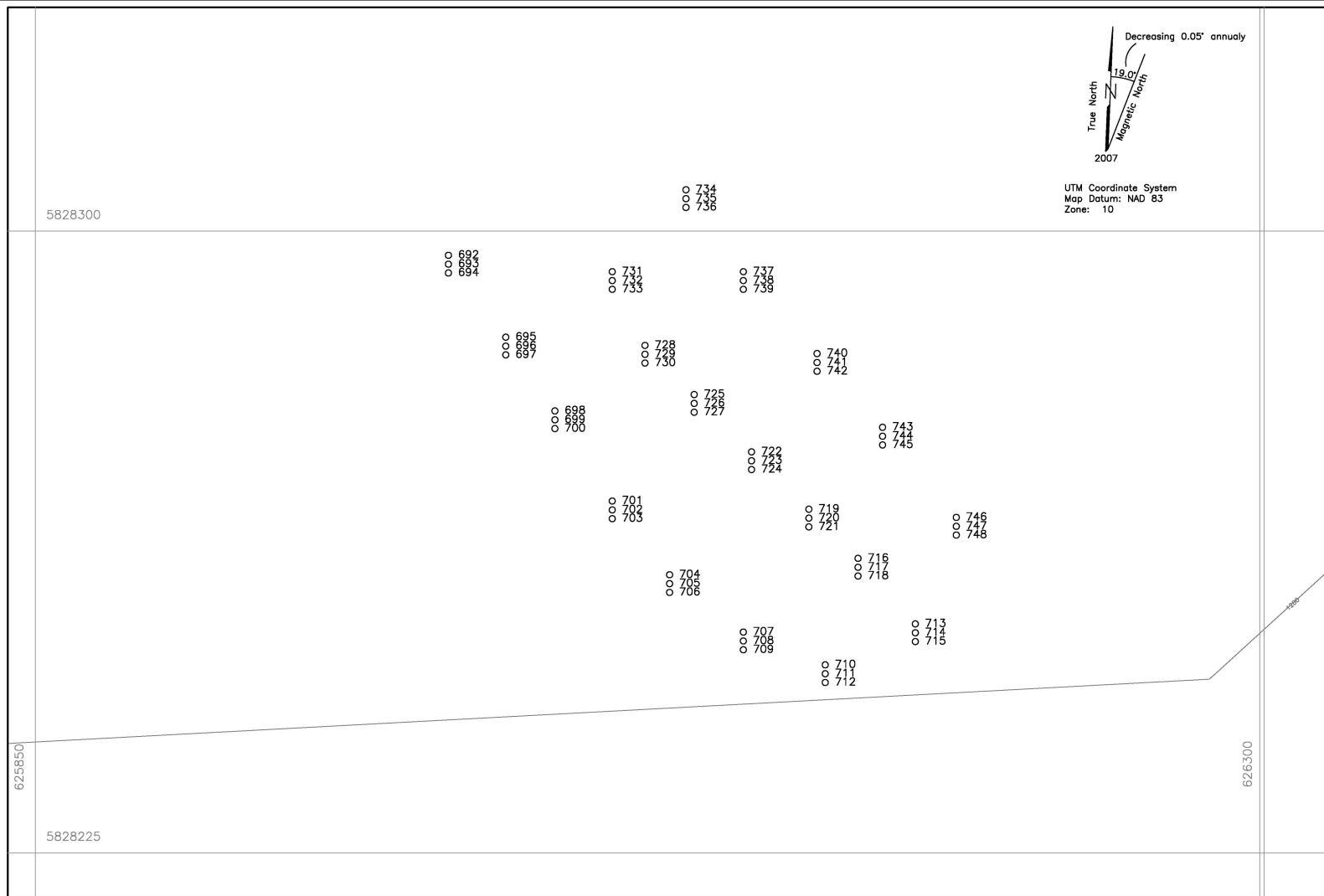
627	Fig 4/Area A	Float	ppm	Tas-f17-31b	< LOD	222	223 < LOD	7 < LOD	< LOD	< LOD	< LOD	< LOD	< LOD	118 < LOD	52 < LOD	< LOD	105259 < LOD	< LOD	< LOD	< LOD	< LOD	42	3 < LOD	< LOD	< LOD	< LOD	.	
628	Fig 4/Area A	Float	ppm	Tas-f17-32	< LOD	161	382 < LOD	11 < LOD	23 < LOD	< LOD	< LOD	< LOD	< LOD	115 < LOD	63 < LOD	< LOD	71607 < LOD	< LOD	< LOD	< LOD	< LOD	35	2 < LOD	< LOD	< LOD	< LOD	.	
629	Fig 4/Area A	Float	ppm	Tas-f17-32a	< LOD	167	393 < LOD	9	23	25 < LOD	13 < LOD	< LOD	116 < LOD	58 < LOD	< LOD	74766 < LOD	< LOD	< LOD	< LOD	< LOD	32	2 < LOD	70	118	4875	.		
630	Fig 4/Area A	Float	ppm	Tas-f17-32b	< LOD	171	411 < LOD	10	17 < LOD	< LOD	< LOD	< LOD	106 < LOD	69 < LOD	< LOD	81779 < LOD	< LOD	< LOD	< LOD	< LOD	34	2 < LOD	< LOD	< LOD	6816 < LOD	.		
631	Fig 4/Area A	Float	ppm	Tas-f17-33	< LOD	208	480 < LOD	11	19 < LOD	< LOD	< LOD	< LOD	130 < LOD	77 < LOD	< LOD	101173 < LOD	< LOD	< LOD	< LOD	< LOD	40	3 < LOD	< LOD	< LOD	13490 < LOD	.		
632	Fig 4/Area A	Float	ppm	Tas-f17-33a	< LOD	196	455 < LOD	11	22 < LOD	< LOD	< LOD	< LOD	125 < LOD	57 < LOD	< LOD	96684 < LOD	< LOD	< LOD	< LOD	< LOD	38	3 < LOD	< LOD	< LOD	10764 < LOD	.		
633	Fig 4/Area A	Float	ppm	Tas-f17-33b	< LOD	197	416 < LOD	7 < LOD	< LOD	< LOD	< LOD	< LOD	118 < LOD	60	91 < LOD	90425 < LOD	< LOD	< LOD	< LOD	< LOD	38	2 < LOD	137	193	13534	.		
634	Fig 4/Area A	Float	ppm	Tas-f17-34	< LOD	199	473 < LOD	13	16 < LOD	< LOD	< LOD	< LOD	117 < LOD	48 < LOD	< LOD	89856 < LOD	< LOD	< LOD	< LOD	< LOD	38	2 < LOD	< LOD	< LOD	8789 < LOD	.		
635	Fig 4/Area A	Float	ppm	Tas-f17-34a	< LOD	190	431 < LOD	11	16 < LOD	< LOD	11 < LOD	< LOD	115 < LOD	41 < LOD	< LOD	85218 < LOD	< LOD	< LOD	< LOD	< LOD	36	2 < LOD	< LOD	< LOD	7722 < LOD	.		
636	Fig 4/Area A	Float	ppm	Tas-f17-34b	< LOD	213	478 < LOD	18	16 < LOD	< LOD	< LOD	< LOD	146 < LOD	50 < LOD	< LOD	102305 < LOD	< LOD	< LOD	< LOD	< LOD	40	3 < LOD	< LOD	< LOD	14581 < LOD	.		
637	Fig 4/Area A	Float	ppm	Tas-f17-34b	< LOD	184	400 < LOD	13 < LOD	< LOD	< LOD	< LOD	< LOD	124 < LOD	53 < LOD	< LOD	88449 < LOD	< LOD	< LOD	< LOD	< LOD	36	2 < LOD	< LOD	< LOD	11281 < LOD	.		
638	Fig 4/Area A	Float	ppm	Tas-f17-35	< LOD	218	531 < LOD	13 < LOD	< LOD	< LOD	9 < LOD	< LOD	107 < LOD	42 < LOD	< LOD	90677 < LOD	< LOD	< LOD	< LOD	< LOD	41	3 < LOD	105 < LOD	< LOD	11281 < LOD	.		
639	Fig 4/Area A	Float	ppm	Tas-f17-35b	< LOD	182	387 < LOD	13	26 < LOD	< LOD	13 < LOD	< LOD	119 < LOD	63 < LOD	< LOD	86781 < LOD	< LOD	< LOD	< LOD	< LOD	34	2 < LOD	< LOD	< LOD	8294 < LOD	.		
640	Fig 4/Area A	Float	ppm	Tas-f17-36	< LOD	216	161 < LOD	5 < LOD	< LOD	< LOD	< LOD	< LOD	132 < LOD	61 < LOD	< LOD	107981 < LOD	< LOD	< LOD	< LOD	< LOD	40	4 < LOD	121	236	13985 < LOD	.		
641	Fig 4/Area A	Float	ppm	Tas-f17-36a	< LOD	190	218 < LOD	5 < LOD	< LOD	< LOD	< LOD	< LOD	131 < LOD	< LOD	< LOD	100793 < LOD	< LOD	< LOD	< LOD	< LOD	39	3 < LOD	< LOD	< LOD	11469 < LOD	.		
642	Fig 4/Area A	Float	ppm	Tas-f17-36b	< LOD	189	172 < LOD	4 < LOD	< LOD	< LOD	8 < LOD	< LOD	120 < LOD	58 < LOD	< LOD	100079 < LOD	< LOD	< LOD	< LOD	< LOD	34	3 < LOD	103 < LOD	< LOD	9379 < LOD	.		
643	Fig 4/Area A	Float	ppm	Tas-f17-37	< LOD	29	255	7	40 < LOD	28 < LOD	< LOD	< LOD	48 < LOD	< LOD	< LOD	19669	347 < LOD	< LOD	< LOD	< LOD	5	< LOD	< LOD	< LOD	4863 < LOD	.		
644	Fig 4/Area A	Float	ppm	Tas-f17-37a	< LOD	187	434 < LOD	12 < LOD	< LOD	< LOD	< LOD	< LOD	137 < LOD	46 < LOD	< LOD	97705 < LOD	< LOD	< LOD	< LOD	< LOD	37	2 < LOD	82 < LOD	10891	1	.		
645	Fig 4/Area A	Float	ppm	Tas-f17-37b	< LOD	165	343 < LOD	10 < LOD	< LOD	23 < LOD	< LOD	< LOD	123 < LOD	56 < LOD	< LOD	79942 < LOD	< LOD	< LOD	< LOD	< LOD	34	2 < LOD	101 < LOD	< LOD	4998	.		
646	Fig 4/Area A	Float	ppm	Tas-f17-38	< LOD	133	316	8	26	15	14 < LOD	< LOD	65 < LOD	27 < LOD	< LOD	45329 < LOD	< LOD	< LOD	< LOD	< LOD	16	< LOD	< LOD	69	131	4363 < LOD	.	
647	Fig 4/Area A	Float	ppm	Tas-f17-38a	< LOD	187	433 < LOD	13	14 < LOD	< LOD	9 < LOD	< LOD	118 < LOD	53 < LOD	< LOD	97098 < LOD	< LOD	< LOD	< LOD	< LOD	35	3 < LOD	< LOD	< LOD	11692 < LOD	.		
648	Fig 4/Area A	Float	ppm	Tas-f17-38b	< LOD	192	412 < LOD	11 < LOD	< LOD	< LOD	9 < LOD	< LOD	139 < LOD	56 < LOD	< LOD	94318 < LOD	< LOD	< LOD	< LOD	< LOD	36	2 < LOD	< LOD	< LOD	11720 < LOD	.		
649	Fig 4/Area A	Float	ppm	Tas-f17-39	< LOD	208	484 < LOD	20 < LOD	< LOD	< LOD	< LOD	< LOD	133 < LOD	61 < LOD	< LOD	100812 < LOD	< LOD	< LOD	< LOD	< LOD	35	2 < LOD	< LOD	< LOD	8544 < LOD	.		
650	Fig 4/Area A	Float	ppm	Tas-f17-39a	< LOD	183	431 < LOD	12	19 < LOD	< LOD	7 < LOD	< LOD	114 < LOD	41 < LOD	< LOD	87571 < LOD	< LOD	< LOD	< LOD	< LOD	35	2 < LOD	< LOD	< LOD	9455	2	.	
651	Fig 4/Area A	Float	ppm	Tas-f17-39b	< LOD	195	410 < LOD	12	18 < LOD	< LOD	< LOD	< LOD	115 < LOD	72	107 < LOD	93995 < LOD	< LOD	< LOD	< LOD	< LOD	38	2 < LOD	< LOD	< LOD	13966 < LOD	.		
652	Fig 4/Area A	Float	ppm	Tas-f17-40	< LOD	259	647	13	19	21 < LOD	< LOD	9 < LOD	148 < LOD	51 < LOD	< LOD	82867 < LOD	< LOD	< LOD	< LOD	< LOD	51	3 < LOD	< LOD	< LOD	< LOD	.		
653	Fig 4/Area A	Float	ppm	Tas-f17-40a	< LOD	262	645	13	18	23 < LOD	< LOD	< LOD	135 < LOD	74	131 < LOD	90030 < LOD	< LOD	< LOD	< LOD	< LOD	52	3 < LOD	75	160	8389	.		
654	Fig 4/Area A	Float	ppm	Tas-f17-40b	< LOD	263	690 < LOD	24	23 < LOD	< LOD	10 < LOD	< LOD	133 < LOD	71	80 < LOD	96385 < LOD	< LOD	< LOD	< LOD	< LOD	53	3 < LOD	< LOD	< LOD	8440 < LOD	.		
656	Fig 4/Area A	Float	ppm	Tas-f17-41	10	224	537 < LOD	14	21 < LOD	< LOD	< LOD	< LOD	135 < LOD	46 < LOD	< LOD	101346 < LOD	45	45 < LOD	< LOD	48	3 < LOD	191 < LOD	< LOD	11561 < LOD	.			
657	Fig 4/Area A	Float	ppm	Tas-f17-41a	7	215	494 < LOD	13 < LOD	< LOD	< LOD	9 < LOD	< LOD	192 < LOD	47 < LOD	< LOD	99341 < LOD	39 < LOD	< LOD	< LOD	< LOD	47	3 < LOD	< LOD	< LOD	< LOD	.		
658	Fig 4/Area A	Float	ppm	Tas-f17-41b	< LOD	199	456	10	12 < LOD	< LOD	< LOD	< LOD	131 < LOD	64 < LOD	< LOD	93270 < LOD	< LOD	< LOD	< LOD	< LOD	41	2 < LOD	88 < LOD	9152	1	.		
659	Fig 4/Area A	Float	ppm	Tas-f17-42	9	206	127 < LOD	< LOD	24 < LOD	< LOD	< LOD	< LOD	121 < LOD	< LOD	< LOD	118287 < LOD	< LOD	< LOD	< LOD	< LOD	44	3 < LOD	173 < LOD	12451 < LOD	< LOD	.		
660	Fig 4/Area A	Float	ppm	Tas-f17-42a	5	214	151 < LOD	3	17 < LOD	< LOD	< LOD	< LOD	121 < LOD	40 < LOD	< LOD	120221 < LOD	29 < LOD	< LOD	< LOD	< LOD	47	4 < LOD	116 < LOD	14844 < LOD	< LOD	.		
661	Fig 4/Area A	Float	ppm	Tas-f17-42b	< LOD	212	231	9	5	16 < LOD	< LOD	< LOD	142 < LOD	69 < LOD	< LOD	120458 < LOD	< LOD	< LOD	< LOD	< LOD	45	4 < LOD	148	311	13550 < LOD	.		
662	Fig 4/Area A	Float	ppm	Tas-f17-43	6	189	486 < LOD	14	21 < LOD	< LOD	6 < LOD	< LOD	121 < LOD	44	71 < LOD	93739 < LOD	31 < LOD	< LOD	< LOD	< LOD	39	3 < LOD	106	280	15845 < LOD	.		
663	Fig 4/Area A	Float	ppm	Tas-f17-43a	< LOD	162	405 < LOD	10 < LOD	< LOD	< LOD	< LOD	< LOD	114 < LOD	60 < LOD	< LOD	85815 < LOD	< LOD	< LOD	< LOD	< LOD	35	2 < LOD	105	98	6792	.		
664	Fig 4/Area A	Float	ppm	Tas-f17-43b	< LOD	177	411 < LOD	10 < LOD	< LOD	< LOD	7 < LOD	< LOD	110 < LOD	68 < LOD	< LOD	88272 < LOD	< LOD	< LOD	< LOD	< LOD	35	3 < LOD	121	122	8166	1	.	
665	Fig 4/Area A	Float	ppm	Tas-f17-44	6	147	52	10	54	22 < LOD	< LOD	< LOD	85 < LOD	< LOD	< LOD	51420 < LOD	42	54 < LOD	< LOD	12	2 < LOD	137	59	2874 < LOD	< LOD	.		
666	Fig 4/Area A	Float	ppm	Tas-f17-44a	< LOD	150	88 < LOD	35	17 < LOD	< LOD	< LOD	< LOD	66 < LOD	117	141 < LOD	95248 < LOD	< LOD	< LOD	< LOD	< LOD	5	< LOD	< LOD	< LOD	1201 < LOD	.		
667	Fig 4/Area A	Float	ppm	Tas-f17-44b	< LOD	150	106 < LOD	37	13	17 < LOD	< LOD	10 < LOD	70 < LOD	30 < LOD	< LOD	50840	483 < LOD	< LOD	< LOD	< LOD	5	3 < LOD	70 < LOD	1432 < LOD	< LOD	.		
668	Fig 4/Area A	Float	ppm	Tas-f17-45	< LOD	172	445 < LOD	8 < LOD	< LOD	< LOD	12 < LOD	< LOD	105 < LOD	87	266	281	91237 < LOD	< LOD	< LOD	< LOD	< LOD	33	3 < LOD	278	162	9598	1	.
669	Fig 4/Area A	Float	ppm	Tas-f17-45a	< LOD	193	522 < LOD	9 < LOD	< LOD	< LOD	< LOD	< LOD	130 < LOD	81	139 < LOD	94448 < LOD	< LOD	< LOD	< LOD	< LOD	39	3 < LOD	< LOD	< LOD	10341 < LOD	.		
670	Fig 4/Area A	Float	ppm	Tas-f17-45b	< LOD	186	531	14	9 < LOD	< LOD	< LOD	< LOD	122 < LOD	75	136 < LOD	93286 < LOD	< LOD	< LOD	< LOD	< LOD	38	3 < LOD	83	232	10615	1	.	
671	Fig 4/Area A	Float	ppm	Tas-f17-46	< LOD	193	347 < LOD	10 < LOD	< LOD	< LOD	< LOD	< LOD	125 < LOD	65 < LOD	< LOD	99331 < LOD	< LOD	< LOD	< LOD	< LOD	38	2 < LOD	111	218	12558 < LOD	.		
672	Fig 4/Area A	Float	ppm	Tas-f17-46a	< LOD	171	393 < LOD	10 < LOD	< LOD	< LOD	< LOD	< LOD	121 < LOD	71 < LOD	< LOD	87641 < LOD	< LOD	< LOD	< LOD	< LOD	36	2 < LOD	90	146	8702	.		
673	Fig 4/Area A	Float	ppm	Tas-f17-46b	< LOD	183	393 < LOD	11 < LOD	< LOD	< LOD	9 < LOD	< LOD	124 < LOD	81 < LOD	< LOD	90678 < LOD	< LOD	< LOD	< LOD	< LOD	39	3 < LOD	135 < LOD	< LOD	8490 < LOD	.		
674	Fig 4/Area A	Float	ppm	Tas-f17-47	< LOD	194	143 < LOD	3 < LOD	< LOD	< LOD	< LOD	< LOD	141 < LOD	45 < LOD	< LOD	105950 < LOD	< LOD	< LOD	< LOD	< LOD	35	3 < LOD	123	218	12531 < LOD	.		

Table No. 2
Tasse Area A, XRF Sampling Results

675	Fig 4/Area A	Float	ppm	Tas-f17-47a	< LOD	237	46 < LOD	< LOD	< LOD	< LOD	< LOD	< LOD	< LOD	< LOD	< LOD	140	< LOD	35 < LOD	< LOD	129544	2992	< LOD	< LOD	< LOD	< LOD	43	4 < LOD	194	316	19549	< LOD
676	Fig 4/Area A	Float	ppm	Tas-f17-47b	< LOD	215	70 < LOD	< LOD	< LOD	< LOD	< LOD	< LOD	< LOD	< LOD	< LOD	126	< LOD	42 < LOD	< LOD	118296	< LOD	< LOD	< LOD	< LOD	< LOD	40	3 < LOD	119	248	15315	< LOD
677	Fig 4/Area A	Float	ppm	Tas-f17-48	< LOD	167	423 < LOD	10	18 < LOD	< LOD	10 < LOD	< LOD	117 < LOD	64 < LOD	< LOD	86805	< LOD	< LOD	< LOD	< LOD	< LOD	< LOD	< LOD	< LOD	32	2 < LOD	105	107	8298		
678	Fig 4/Area A	Float	ppm	Tas-f17-48a	< LOD	170	389 < LOD	8 < LOD	< LOD	< LOD	< LOD	< LOD	107 < LOD	37 < LOD	< LOD	85355	< LOD	< LOD	< LOD	< LOD	< LOD	< LOD	< LOD	< LOD	32	2 < LOD	112	118	8939		
679	Fig 4/Area A	Float	ppm	Tas-f17-48b	< LOD	170	389 < LOD	9	21 < LOD	< LOD	8 < LOD	< LOD	116 < LOD	58 < LOD	< LOD	84117	< LOD	< LOD	< LOD	< LOD	< LOD	< LOD	< LOD	< LOD	34	2 < LOD	109	114	7111		
680	Fig 4/Area A	Float	ppm	Tas-f17-49	< LOD	180	404 < LOD	10	23 < LOD	< LOD	< LOD	< LOD	111 < LOD	43 < LOD	< LOD	87579	< LOD	< LOD	< LOD	< LOD	< LOD	< LOD	< LOD	< LOD	35	2 < LOD	114	107	8253		
681	Fig 4/Area A	Float	ppm	Tas-f17-49a	< LOD	192	415 < LOD	9	16 < LOD	< LOD	8 < LOD	< LOD	124 < LOD	37 < LOD	< LOD	97389	< LOD	< LOD	< LOD	< LOD	< LOD	< LOD	< LOD	< LOD	37	3 < LOD	107	198	11650		
682	Fig 4/Area A	Float	ppm	Tas-f17-49b	< LOD	188	422 < LOD	10 < LOD	< LOD	< LOD	9 < LOD	< LOD	134 < LOD	< LOD	< LOD	93354	< LOD	< LOD	< LOD	< LOD	< LOD	< LOD	< LOD	< LOD	38	2 < LOD	136	141	9152	< LOD	
683	Fig 4/Area A	Float	ppm	Tas-f17-50	< LOD	195	420 < LOD	10 < LOD	< LOD	< LOD	9 < LOD	< LOD	115 < LOD	43 < LOD	< LOD	93937	< LOD	< LOD	< LOD	< LOD	< LOD	< LOD	< LOD	< LOD	38	3 < LOD	99	148	12052	< LOD	
684	Fig 4/Area A	Float	ppm	Tas-f17-50a	9	56	145 < LOD	5	27	164	< LOD	< LOD	154	225	66 < LOD	< LOD	51307	< LOD	< LOD	< LOD	< LOD	< LOD	< LOD	< LOD	13 < LOD	< LOD	94	< LOD	2032	< LOD	
685	Fig 4/Area A	Float	ppm	Tas-f17-50b	< LOD	198	469 < LOD	11 < LOD	< LOD	< LOD	< LOD	< LOD	117 < LOD	55 < LOD	< LOD	92474	< LOD	< LOD	< LOD	< LOD	< LOD	< LOD	< LOD	< LOD	37	2 < LOD	106	< LOD	8631		
686	Fig 4/Area A	Float	ppm	Tas-f17-51	< LOD	181	388 < LOD	9 < LOD	< LOD	< LOD	< LOD	< LOD	116 < LOD	77 < LOD	< LOD	91296	< LOD	< LOD	< LOD	< LOD	< LOD	< LOD	< LOD	< LOD	35	3 < LOD	116	192	12071		
687	Fig 4/Area A	Float	ppm	Tas-f17-51a	6	202	447 < LOD	12	27	< LOD	< LOD	< LOD	137 < LOD	47 < LOD	< LOD	100989	< LOD	< LOD	< LOD	< LOD	< LOD	< LOD	< LOD	< LOD	38	3 < LOD	142	167	11698	1	
688	Fig 4/Area A	Float	ppm	Tas-f17-51b	< LOD	193	378 < LOD	8 < LOD	< LOD	< LOD	< LOD	< LOD	124 < LOD	86 < LOD	< LOD	96239	< LOD	< LOD	< LOD	< LOD	< LOD	< LOD	< LOD	< LOD	36	3 < LOD	< LOD	< LOD	10285	2	
689	Fig 4/Area A	Float	ppm	Tas-f17-52	< LOD	194	440 < LOD	10 < LOD	< LOD	< LOD	7 < LOD	< LOD	121 < LOD	54 < LOD	< LOD	93295	< LOD	< LOD	< LOD	< LOD	< LOD	< LOD	< LOD	< LOD	38	2 < LOD	169	< LOD	12353	< LOD	
690	Fig 4/Area A	Float	ppm	Tas-f17-52a	< LOD	196	442 < LOD	11 < LOD	< LOD	< LOD	< LOD	< LOD	108 < LOD	52 < LOD	< LOD	92528	< LOD	< LOD	< LOD	< LOD	< LOD	< LOD	< LOD	< LOD	37	3 < LOD	116	< LOD	11700		
691	Fig 4/Area A	Float	ppm	Tas-f17-52b	< LOD	192	425	10	9 < LOD	< LOD	< LOD	11 < LOD	< LOD	58 < LOD	< LOD	92363	< LOD	< LOD	< LOD	< LOD	< LOD	< LOD	< LOD	< LOD	38	2 < LOD	103	< LOD	11462		

In all cases <LOD means below level of detection.

Values for Zn above 120 ppm are coloured red.



Tasse Property Area B
Float Rock Samples XRF Results (ppm)

XRF No.	Zn	Cu	Au
692	115	56	< LOD
693	112	54	< LOD
694	157	53	< LOD
695	135	86	< LOD
696	129	67	< LOD
697	118	69	< LOD
698	126	53	< LOD
699	114	68	< LOD
700	33	< LOD	< LOD
701	107	44	< LOD
702	113	< LOD	< LOD
703	141	64	< LOD
704	92	43	< LOD
705	126	54	< LOD
706	135	80	< LOD
707	107	47	< LOD
708	143	43	< LOD
709	138	56	< LOD
710	66	< LOD	< LOD
711	141	41	< LOD
712	152	71	< LOD
713	112	42	< LOD
714	120	61	< LOD
715	133	54	< LOD
716	118	56	< LOD
717	110	46	< LOD
718	120	43	< LOD
719	116	73	< LOD
720	125	45	< LOD
721	112	40	< LOD
722	142	47	< LOD
723	106	56	< LOD
724	133	71	< LOD
725	132	44	< LOD
726	110	44	< LOD
727	124	59	< LOD
728	124	57	< LOD
729	110	47	< LOD
730	113	46	< LOD
731	< LOD	< LOD	< LOD
732	80	53	< LOD
733	85	73	< LOD
734	113	62	< LOD
735	119	57	< LOD
736	107	41	< LOD
737	136	55	< LOD
738	138	54	< LOD
739	143	72	< LOD
740	61	45	< LOD
741	116	82	< LOD
742	117	72	< LOD
743	114	49	< LOD
744	125	35	< LOD
745	102	49	< LOD
746	107	< LOD	< LOD
747	86	46	< LOD
748	118	37	< LOD

Results below level of detection are indicated <L
Zn results over 120 ppm marked in red.

See Table No. 3 for XRF results.

BARKER MINERALS LTD.

ACE PROPERTY
Area B

Rock Sample Numbers
and Zn, Cu, Au Geochemistry
Cariboo Mining Division, B.C.

NTS Mapsheet: 93 A/11

Date: February 28, 2018

Fig.No. 5

LEGEND

— 1000 — Topographic Contour & Elevation
Contour interval 20 metres

~ ~ ~ ~ ~ Creek, Pond

— — — — — Road

o 700 Rock sample location and number

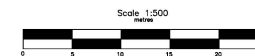


Table No. 3
Tasse Area B, XRF Sampling Results

738	Fig 5 /Area B	Float	ppm	Tas-f17-68a	< LOD	236	478	12	7	14	< LOD	< LOD	10	< LOD	< LOD	138	< LOD	54	113	< LOD	110540	< LOD	< LOD	< LOD	< LOD	< LOD	50	3	< LOD	92	248	17229	< LOD	
739	Fig 5 /Area B	Float	ppm	Tas-f17-68b	< LOD	231	558	10	4	23	< LOD	< LOD	11	< LOD	< LOD	143	< LOD	72	< LOD	< LOD	112849	3320	< LOD	< LOD	< LOD	< LOD	42	3	< LOD	70	234	11990	< LOD	
740	Fig 5 /Area B	Float	ppm	Tas-f17-69	< LOD	10	19	< LOD	< LOD	< LOD	< LOD	< LOD	< LOD	< LOD	< LOD	61	< LOD	45	1572	< LOD	66031	< LOD	< LOD	< LOD	< LOD	< LOD	< LOD	< LOD	< LOD	< LOD	906	53	1865	< LOD
741	Fig 5 /Area B	Float	ppm	Tas-f17-69a	< LOD	213	563	< LOD	8	< LOD	< LOD	< LOD	< LOD	< LOD	< LOD	116	< LOD	82	222	< LOD	88146	< LOD	< LOD	< LOD	< LOD	< LOD	44	3	< LOD	795	145	11342	< LOD	
742	Fig 5 /Area B	Float	ppm	Tas-f17-69b	< LOD	180	494	9	12	< LOD	< LOD	< LOD	< LOD	< LOD	< LOD	117	< LOD	72	601	< LOD	93042	< LOD	< LOD	< LOD	< LOD	< LOD	39	2	< LOD	277	139	9389	< LOD	
743	Fig 5 /Area B	Float	ppm	Tas-f17-70	< LOD	165	217	< LOD	6	< LOD	< LOD	< LOD	< LOD	< LOD	< LOD	114	< LOD	49	< LOD	< LOD	95942	< LOD	< LOD	< LOD	< LOD	< LOD	33	3	< LOD	101	146	9069	< LOD	
744	Fig 5 /Area B	Float	ppm	Tas-f17-70a	< LOD	199	287	11	7	< LOD	< LOD	< LOD	< LOD	< LOD	< LOD	125	< LOD	35	< LOD	< LOD	112139	< LOD	< LOD	< LOD	< LOD	< LOD	35	3	< LOD	151	319	14758	< LOD	
745	Fig 5 /Area B	Float	ppm	Tas-f17-70b	< LOD	182	355	< LOD	10	< LOD	< LOD	< LOD	< LOD	< LOD	< LOD	102	< LOD	49	< LOD	< LOD	108133	< LOD	< LOD	< LOD	< LOD	< LOD	36	3	< LOD	142	244	11428	< LOD	
746	Fig 5 /Area B	Float	ppm	Tas-f17-71	< LOD	154	18	< LOD	< LOD	< LOD	< LOD	< LOD	10	< LOD	< LOD	107	< LOD	< LOD	< LOD	94992	3311	< LOD	< LOD	< LOD	< LOD	< LOD	31	2	< LOD	111	72	3213	< LOD	
747	Fig 5 /Area B	Float	ppm	Tas-f17-71a	< LOD	192	31	< LOD	3	< LOD	< LOD	< LOD	8	< LOD	< LOD	86	< LOD	46	< LOD	< LOD	101530	< LOD	< LOD	< LOD	< LOD	< LOD	38	2	< LOD	123	151	10779	< LOD	
748	Fig 5 /Area B	Float	ppm	Tas-f17-71b	< LOD	219	53	< LOD	< LOD	< LOD	< LOD	< LOD	9	< LOD	< LOD	118	< LOD	37	< LOD	< LOD	124597	3557	< LOD	< LOD	< LOD	< LOD	41	2	< LOD	183	254	17099	< LOD	

In all cases <LOD means below level of detection.

Values for Zn above 120 ppm are coloured red.

9.0 SURVEY RESULTS

Rock sampling

The rock sampling geochemical results are presented in Figure Nos. 4 and 5 and in Table Nos. 2 and 3.

Area A (Figure No. 4)

156 analyses of float rocks were made. Gold was not detected. The samples had no significant results in copper. The highest result in zinc was 192 ppm (parts per million).

Area B (Figure No. 5)

56 analyses of float rocks were made. Gold was not detected. The samples had no significant results in copper. The highest result in zinc was 157 ppm.

10.0 CONCLUSIONS

The rock sampling program was of limited scope. Limited outcrop in the target areas necessitated sampling float in lieu of bedrock. No gold or significant pathfinder elements were discovered in the small area of Tasse explored in 2017. Tasse remains primarily a diamond prospect as suggested in the historical Assessment Report 32209.

11.0 RECOMMENDATIONS

Geologic mapping and rock sampling traverses should be done over the area of the Holocene age basic volcanic (unit Hovb in BCGS geologic mapping). The exploration target would be diamonds, as discussed in the historical Assessment Report 32209.

Geologic mapping and rock and soil sampling traverses should be done over the area of the Devonian to Mississippian granitic intrusive (unit DMQ in BCGS geologic mapping). The exploration target would be vein-related gold, silver and base metals.

12.0 REFERENCE

Doyle, L., Trenching, Prospecting and Physical Work Assessment Report on the Cariboo, Tasse, Black Bear and Peripheral Properties, April 29, 2011 (Assessment Report 32209).

APPENDIX A

Analytical Methods

Overview of sample analysis using energy dispersive X-ray fluorescence using the Thermo Scientific Niton XL3t handheld XRF analyzer

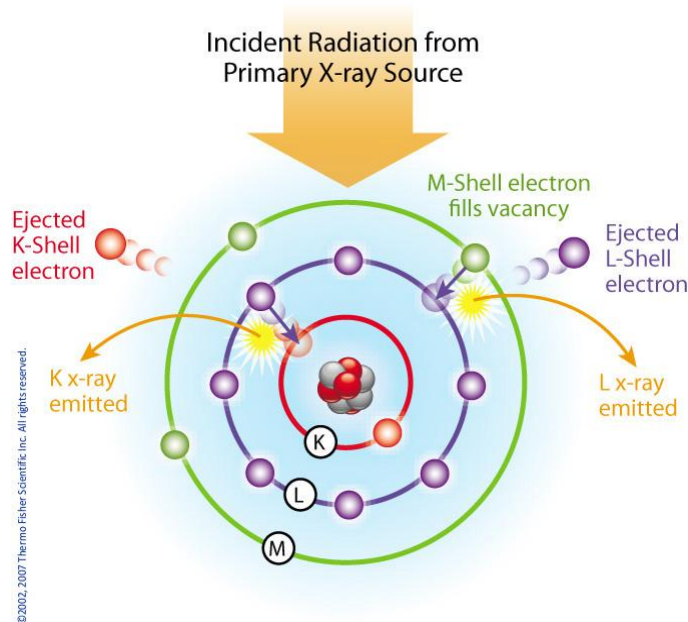
Thermo Scientific portable energy-dispersive x-ray fluorescence (EDXRF) analyzers, commonly known as XRF analyzers, can quickly and nondestructively determine the elemental composition of metal and precious metal samples of rocks, ore and soil.

Up to 40 elements may be analyzed simultaneously by measuring the characteristic fluorescence x-rays emitted by a sample. XRF analyzers can quantify elements ranging from magnesium (Mg - element 12) through uranium (U - element 92) and measure x-ray energies from 1.25 keV up to 85 keV in the case of Pb K-shell fluorescent x-rays excited with a ^{109}Cd isotope. These instruments also measure the elastic (Raleigh) and inelastic (Compton) scatter x-rays emitted by the sample during each measurement to determine, among other things, the approximate density and percentage of the light elements in the sample.

Elemental Analysis - A Unique Set of Fingerprints

How does XRF work? Each of the elements present in a sample produces a unique set of characteristic x-rays that is a "fingerprint" for that specific element. XRF analyzers determine the chemistry of a sample by measuring the spectrum of the characteristic x-ray emitted by the different elements in the sample when it is illuminated by x-rays. These x-rays are emitted either from a miniaturized x-ray tube, or from a small, sealed capsule of radioactive material.

1. A fluorescent x-ray is created when an x-ray of sufficient energy strikes an atom in the sample, dislodging an electron from one of the atom's inner orbital shells.
2. The atom regains stability, filling the vacancy left in the inner orbital shell with an electron from one of the atom's higher energy orbital shells.
3. The electron drops to the lower energy state by releasing a fluorescent x-ray, and the energy of this x-ray is equal to the specific difference in energy between two quantum states of the electron.



Atom emits characteristic X-rays when illuminated by x-rays from a primary source.

When a sample is measured using XRF, each element present in the sample emits its own unique fluorescent x-ray energy spectrum. By simultaneously measuring the fluorescent x-rays emitted by the different elements in the sample, the Thermo Scientific portable XRF analyzers can rapidly determine those elements present in the sample and their relative concentrations - in other words, the elemental chemistry of the sample.



Overview of the Thermo Scientific Niton XL3t handheld XRF analyzer.

APPENDIX B

STATEMENT of AUTHOR'S QUALIFICATIONS

Statement of Author's Qualifications

I, Rein Turna, of the City of West Vancouver, British Columbia, hereby certify that:

1. I am Vice President of Exploration of Barker Minerals Ltd.
2. I am a graduate of the University of British Columbia with a B.Sc. in Geological Sciences granted in 1975.
3. I am a registered member of the Professional Engineers and Geoscientists of British Columbia.
4. I have worked as a geologist in British Columbia, Saskatchewan, Ontario, Yukon and Northwest Territories in Canada since 1975.

R. Turna

February 28, 2018

APPENDIX C

STATEMENT of EXPENDITURES

Barker Minerals Ltd.

Work was completed between September 15, 2016 and September 11, 2017

Work was done on claim # 1038877 & 1038878

Event # 5664039

BBE - Tasse Property - Geological - Office

Louis Doyle

Planning, managing & interpretation	2	\$ 600.00	\$ 1,200.00
Room & board	2	\$ 150.00	\$ 300.00

Rein Turna - Geologist

Report writing, maps and managing	7	\$ 600.00	\$ 4,200.00
Room & board	7	\$ 150.00	\$ 1,050.00

Colleen Doyle

Report compilation and filing	2	\$ 300.00	\$ 600.00
Room & board	2	\$ 150.00	\$ 300.00

\$ 7,650.00

BBE - Tasse Property - Geochemical - Field Days

	Date	Days	Rate	Subtotal
Louis Doyle -				
Rock collection - Tasse	June 22, 2017	1	\$ 600.00	\$ 600.00
Rock collection - Tasse	June 23, 2017	1	\$ 600.00	\$ 600.00
Rock collection - Tasse	June 24, 2017	1	\$ 600.00	\$ 600.00
Rock collection - Tasse	June 25, 2017	1	\$ 600.00	\$ 600.00
Rock collection - Tasse	June 26, 2017	1	\$ 600.00	\$ 600.00
Rock collection - Tasse	June 27, 2017	1	\$ 600.00	\$ 600.00
Room & Board (day rate)		6	\$ 150.00	\$ 900.00
Vehicle & gas (day rate)		6	\$ 150.00	\$ 900.00
Brian Hall -				
Rock collection - Tasse	June 22, 2017	1	\$ 600.00	\$ 600.00
Rock collection - Tasse	June 23, 2017	1	\$ 600.00	\$ 600.00
Rock collection - Tasse	June 24, 2017	1	\$ 600.00	\$ 600.00
Rock collection - Tasse	June 25, 2017	1	\$ 600.00	\$ 600.00
Rock collection - Tasse	June 26, 2017	1	\$ 600.00	\$ 600.00
Rock collection - Tasse	June 27, 2017	1	\$ 600.00	\$ 600.00
Room & Board (day rate)		6	\$ 150.00	\$ 900.00

Barker Minerals Ltd.

Work was completed between September 15, 2016 and September 11, 2017

Work was done on claim # 1038877 & 1038878

Event # 5664039

Louis Doyle -

Rock sample preparation & XRF assistant	June 28, 2017	1	\$ 600.00	\$ 600.00
Rock sample preparation & XRF assistant	June 29, 2017	1	\$ 600.00	\$ 600.00
Rock sample preparation & XRF assistant	June 30, 2017	1	\$ 600.00	\$ 600.00
Rock sample preparation & XRF assistant	July 1, 2017	1	\$ 600.00	\$ 600.00
Room & Board (day rate)		4	\$ 150.00	\$ 600.00

Brian Hall -

XRF Analysis	June 28, 2017	1	\$ 600.00	\$ 600.00
XRF Analysis	June 29, 2017	1	\$ 600.00	\$ 600.00
XRF Analysis	June 30, 2017	1	\$ 600.00	\$ 600.00
XRF Analysis	July 1, 2017	1	\$ 600.00	\$ 600.00
Room & Board (day rate)		4	\$ 150.00	\$ 600.00

XRF rental

10	\$ 200.00	\$ 2,000.00
----	-----------	-------------

\$ 17,900.00

BBE - Tasse Property - Travel to/from

Louis Doyle

Travel to/from	June 21, 2017	1	\$ 600.00	\$ 600.00
Travel to/from	July 1, 2017	1	\$ 600.00	\$ 600.00
Room & Board (day rate)		2	\$ 150.00	\$ 300.00
Vehicle & gas (day rate)		2	\$ 150.00	\$ 300.00

Brian Hall

Travel to/from	June 21, 2017	1	\$ 600.00	\$ 600.00
Travel to/from	July 1, 2017	1	\$ 600.00	\$ 600.00
Room & Board (day rate)		2	\$ 150.00	\$ 300.00
Vehicle & gas (day rate)		2	\$ 150.00	\$ 300.00

Sub-total \$ 3,600.00

BBE - Tasse Property - Miscellaneous Expenditures

Exploration supplies & equipment

Safety equipment (MTC), exploration supplies & equipment, communication devices & quad

Exploration supplies & equipment \$ 425.00

Barker Minerals Ltd.

Work was completed between September 15, 2016 and September 11, 2017

Work was done on claim # 1038877 & 1038878

Event # 5664039

BBE - Tasse Property - Miscellaneous Expenditures - continued

Quad Rental	7	\$ 150.00	\$ 1,050.00
MTC rental	12	\$ 150.00	\$ 1,800.00
Communication devices			
Hand held radios, satellite phones, Spot emergency locator	7	\$ 24.00	\$ 168.00
	Sub-total		\$ 3,443.00

BBE - Tasse Property Expenditure Summary

Geological - Office	Sub-total	\$ 7,650.00
Geochemical - Field Days	Sub-total	\$ 17,900.00
Travel to/from	Sub-total	\$ 3,600.00
Misc. Expenditures	Sub-total	\$ 3,443.00
	Total	\$ 32,593.00

APPENDIX D

SAMPLE COORDINATES and DESCRIPTIONS

Table No. 4
Rock Sample Coordinates and Descriptions

<u>XRF No.</u>	<u>Field No.</u>	<u>Fig. No. / Area</u>	<u>Type</u>	<u>Easting (X)</u>	<u>Northing (Y)</u>	<u>XRF Target and Description and Comment</u>	<u>Magnetic</u> Y or N
Tasse Area A Float Rock Sampling							
535	Tas-f17-1	Fig 4 / Area A	Float	627521	5828317	Grey vesicular basalt	Y
536	Tas-f17-1a	Fig 4 / Area A	Float			Grey vesicular basalt	Y
537	Tas-f17-1b	Fig 4 / Area A	Float			Grey vesicular basalt	Y
538	Tas-f17-2	Fig 4 / Area A	Float	627441	5828334	Grey vesicular basalt	Y
539	Tas-f17-2a	Fig 4 / Area A	Float			Grey vesicular basalt	Y
540	Tas-f17-2b	Fig 4 / Area A	Float			Grey vesicular basalt	Y
541	Tas-f17-3	Fig 4 / Area A	Float	627397	5828382	Grey vesicular basalt	Y
542	Tas-f17-3a	Fig 4 / Area A	Float			Grey vesicular basalt	Y
543	Tas-f17-3b	Fig 4 / Area A	Float			Grey vesicular basalt	Y
544	Tas-f17-4	Fig 4 / Area A	Float	627366	5828486	Grey vesicular basalt	Y
545	Tas-f17-4a	Fig 4 / Area A	Float			Grey vesicular basalt	Y
546	Tas-f17-4b	Fig 4 / Area A	Float			Grey vesicular basalt	Y
547	Tas-f17-5	Fig 4 / Area A	Float	627222	5828539	Grey vesicular olivine basalt	Y
548	Tas-f17-5a	Fig 4 / Area A	Float			Grey vesicular olivine basalt	Y
549	Tas-f17-5b	Fig 4 / Area A	Float			Grey vesicular olivine basalt	Y
550	Tas-f17-6	Fig 4 / Area A	Float	627136	5828532	Grey vesicular olivine basalt	Y
551	Tas-f17-6a	Fig 4 / Area A	Float			Grey vesicular olivine basalt	Y
552	Tas-f17-6b	Fig 4 / Area A	Float			Grey vesicular olivine basalt	Y
553	Tas-f17-7	Fig 4 / Area A	Float	627127	5828459	Grey vesicular olivine basalt	Y
554	Tas-f17-7a	Fig 4 / Area A	Float			Grey vesicular olivine basalt	Y
555	Tas-f17-7b	Fig 4 / Area A	Float			Grey vesicular olivine basalt	Y
556	Tas-f17-8	Fig 4 / Area A	Float	627235	5828488	Grey vesicular olivine basalt	Y
557	Tas-f17-8a	Fig 4 / Area A	Float			Grey vesicular olivine basalt	Y
558	Tas-f17-8b	Fig 4 / Area A	Float			Grey vesicular olivine basalt	Y
559	Tas-f17-9	Fig 4 / Area A	Float	627282	5828442	Grey vesicular olivine basalt	Y
560	Tas-f17-9a	Fig 4 / Area A	Float			Grey vesicular olivine basalt	Y
561	Tas-f17-9b	Fig 4 / Area A	Float			Grey vesicular olivine basalt	Y
562	Tas-f17-10	Fig 4 / Area A	Float	627197	5828398	Grey vesicular basalt	Y
563	Tas-f17-10a	Fig 4 / Area A	Float			Grey vesicular basalt	Y
564	Tas-f17-10b	Fig 4 / Area A	Float			Grey vesicular basalt	Y
565	Tas-f17-11	Fig 4 / Area A	Float	627290	5828366	Grey vesicular basalt	Y
566	Tas-f17-11a	Fig 4 / Area A	Float			Grey vesicular basalt	Y

Table No. 4
Rock Sample Coordinates and Descriptions

<u>XRF No.</u>	<u>Field No.</u>	<u>Fig. No. / Area</u>	<u>Type</u>	<u>Easting (X)</u>	<u>Northing (Y)</u>	<u>XRF Target and Description and Comment</u>	<u>Magnetic Y or N</u>
Tasse Area A Float Rock Sampling							
567	Tas-f17-11b	Fig 4 / Area A	Float			Grey vesicular basalt	Y
568	Tas-f17-12	Fig 4 / Area A	Float	627246	5828315	Grey pumice	N
569	Tas-f17-12a	Fig 4 / Area A	Float			Grey pumice	N
570	Tas-f17-12b	Fig 4 / Area A	Float			Grey pumice	N
571	Tas-f17-13	Fig 4 / Area A	Float	627349	5828266	Grey pumice	N
572	Tas-f17-13a	Fig 4 / Area A	Float			Grey pumice	N
573	Tas-f17-13b	Fig 4 / Area A	Float			Grey pumice	N
574	Tas-f17-14	Fig 4 / Area A	Float	627694	5828247	Rusty oxidized pumice	N
575	Tas-f17-14a	Fig 4 / Area A	Float			Rusty oxidized pumice	N
576	Tas-f17-14b	Fig 4 / Area A	Float			Rusty oxidized pumice	N
577	Tas-f17-15	Fig 4 / Area A	Float	627779	5828168	Rusty oxidized pumice	N
578	Tas-f17-15a	Fig 4 / Area A	Float			Rusty oxidized pumice	N
579	Tas-f17-15b	Fig 4 / Area A	Float			Rusty oxidized pumice	N
580	Tas-f17-16	Fig 4 / Area A	Float	627909	5828121	Rusty oxidized pumice	N
581	Tas-f17-16a	Fig 4 / Area A	Float			Rusty oxidized pumice	N
582	Tas-f17-16b	Fig 4 / Area A	Float			Rusty oxidized pumice	N
583	Tas-f17-17	Fig 4 / Area A	Float	628110	5828120	Rusty oxidized pumice	N
584	Tas-f17-17a	Fig 4 / Area A	Float			Rusty oxidized pumice	N
585	Tas-f17-17b	Fig 4 / Area A	Float			Rusty oxidized pumice	N
586	Tas-f17-18	Fig 4 / Area A	Float	628068	5827910	Rusty oxidized pumice	N
587	Tas-f17-18a	Fig 4 / Area A	Float			Rusty oxidized pumice	N
588	Tas-f17-18b	Fig 4 / Area A	Float			Rusty oxidized pumice	N
589	Tas-f17-19	Fig 4 / Area A	Float	628074	5827849	Grey vesicular basalt	Y
590	Tas-f17-19a	Fig 4 / Area A	Float			Grey vesicular basalt	Y
591	Tas-f17-19b	Fig 4 / Area A	Float			Grey vesicular basalt	Y
592	Tas-f17-20	Fig 4 / Area A	Float	627939	5827820	Grey vesicular basalt	Y
593	Tas-f17-20a	Fig 4 / Area A	Float			Grey vesicular basalt	Y
594	Tas-f17-20b	Fig 4 / Area A	Float			Grey vesicular basalt	Y
595	Tas-f17-21	Fig 4 / Area A	Float	627822	5827997	Grey vesicular basalt	Y
596	Tas-f17-21a	Fig 4 / Area A	Float			Grey vesicular basalt	Y
597	Tas-f17-21b	Fig 4 / Area A	Float			Grey vesicular basalt	Y
598	Tas-f17-22	Fig 4 / Area A	Float	627728	5827925	Rusty oxidized pumice	N
599	Tas-f17-22a	Fig 4 / Area A	Float			Rusty oxidized pumice	N

Table No. 4
Rock Sample Coordinates and Descriptions

<u>XRF No.</u>	<u>Field No.</u>	<u>Fig. No. / Area</u>	<u>Type</u>	<u>Easting (X)</u>	<u>Northing (Y)</u>	<u>XRF Target and Description and Comment</u>	<u>Magnetic Y or N</u>
Tasse Area A Float Rock Sampling							
600	Tas-f17-22b	Fig 4 / Area A	Float			Rusty oxidized pumice	N
601	Tas-f17-23	Fig 4 / Area A	Float	627558	5827950	Rusty oxidized pumice	N
602	Tas-f17-23a	Fig 4 / Area A	Float			Rusty oxidized pumice	N
603	Tas-f17-23b	Fig 4 / Area A	Float			Rusty oxidized pumice	N
604	Tas-f17-24	Fig 4 / Area A	Float	627588	5828063	Grey vesicular olivine basalt	Y
605	Tas-f17-24a	Fig 4 / Area A	Float			Grey vesicular olivine basalt	Y
606	Tas-f17-24b	Fig 4 / Area A	Float			Grey vesicular olivine basalt	Y
607	Tas-f17-25	Fig 4 / Area A	Float	627491	5828087	Grey vesicular olivine basalt	Y
608	Tas-f17-25a	Fig 4 / Area A	Float			Grey vesicular olivine basalt	Y
609	Tas-f17-25b	Fig 4 / Area A	Float			Grey vesicular olivine basalt	Y
610	Tas-f17-26	Fig 4 / Area A	Float	627595	5828191	Grey vesicular olivine basalt	Y
611	Tas-f17-26a	Fig 4 / Area A	Float			Grey vesicular olivine basalt	Y
612	Tas-f17-26b	Fig 4 / Area A	Float			Grey vesicular olivine basalt	Y
613	Tas-f17-27	Fig 4 / Area A	Float	627130	5828143	Grey vesicular olivine basalt	Y
614	Tas-f17-27a	Fig 4 / Area A	Float			Grey vesicular olivine basalt	Y
615	Tas-f17-27b	Fig 4 / Area A	Float			Grey vesicular olivine basalt	Y
616	Tas-f17-28	Fig 4 / Area A	Float	627040	5828220	Grey vesicular olivine basalt	Y
617	Tas-f17-28a	Fig 4 / Area A	Float			Grey vesicular olivine basalt	Y
618	Tas-f17-28b	Fig 4 / Area A	Float			Grey vesicular olivine basalt	Y
619	Tas-f17-29	Fig 4 / Area A	Float	626911	5828374	Grey fine grained basalt	Y
620	Tas-f17-29a	Fig 4 / Area A	Float			Grey fine grained basalt	Y
621	Tas-f17-29b	Fig 4 / Area A	Float			Grey fine grained basalt	Y
622	Tas-f17-30	Fig 4 / Area A	Float	626703	5828419	Grey fine grained basalt	Y
623	Tas-f17-30a	Fig 4 / Area A	Float			Grey fine grained basalt	Y
624	Tas-f17-30b	Fig 4 / Area A	Float			Grey fine grained basalt	Y
625	Tas-f17-31	Fig 4 / Area A	Float	626569	5828323	Grey fine grained basalt	Y
626	Tas-f17-31a	Fig 4 / Area A	Float			Grey fine grained basalt	Y
627	Tas-f17-31b	Fig 4 / Area A	Float			Grey fine grained basalt	Y
628	Tas-f17-32	Fig 4 / Area A	Float	626503	5828246	Grey vesicular olivine basalt	Y
629	Tas-f17-32a	Fig 4 / Area A	Float			Grey vesicular olivine basalt	Y
630	Tas-f17-32b	Fig 4 / Area A	Float			Grey vesicular olivine basalt	Y

Table No. 4
Rock Sample Coordinates and Descriptions

<u>XRF No.</u>	<u>Field No.</u>	<u>Fig. No. / Area</u>	<u>Type</u>	<u>Easting (X)</u>	<u>Northing (Y)</u>	<u>XRF Target and Description and Comment</u>	<u>Magnetic Y or N</u>
Tasse Area A Float Rock Sampling							
631	Tas-f17-33	Fig 4 / Area A	Float	626696	5828189	Grey vesicular olivine basalt	Y
632	Tas-f17-33a	Fig 4 / Area A	Float			Grey vesicular olivine basalt	Y
633	Tas-f17-33b	Fig 4 / Area A	Float			Grey vesicular olivine basalt	Y
634	Tas-f17-34	Fig 4 / Area A	Float	626834	5828160	Grey vesicular olivine basalt	Y
635	Tas-f17-34a	Fig 4 / Area A	Float			Grey vesicular olivine basalt	Y
636	Tas-f17-34b	Fig 4 / Area A	Float			Grey vesicular olivine basalt	Y
637	Tas-f17-34b	Fig 4 / Area A	Float			Grey vesicular olivine basalt	Y
638	Tas-f17-35	Fig 4 / Area A	Float	626833	5828047	Oxidized pumice	N
639	Tas-f17-35b	Fig 4 / Area A	Float			Oxidized pumice	N
640	Tas-f17-36	Fig 4 / Area A	Float	626954	5828045	Oxidized pumice	N
641	Tas-f17-36a	Fig 4 / Area A	Float			Oxidized pumice	N
642	Tas-f17-36b	Fig 4 / Area A	Float			Oxidized pumice	N
643	Tas-f17-37	Fig 4 / Area A	Float	626998	5827958	Oxidized pumice	N
644	Tas-f17-37a	Fig 4 / Area A	Float			Oxidized pumice	N
645	Tas-f17-37b	Fig 4 / Area A	Float			Oxidized pumice	N
646	Tas-f17-38	Fig 4 / Area A	Float	627157	5827957	Grey vesicular olivine basalt	Y
647	Tas-f17-38a	Fig 4 / Area A	Float			Grey vesicular olivine basalt	Y
648	Tas-f17-38b	Fig 4 / Area A	Float			Grey vesicular olivine basalt	Y
649	Tas-f17-39	Fig 4 / Area A	Float	627311	5827981	Grey vesicular olivine basalt	Y
650	Tas-f17-39a	Fig 4 / Area A	Float			Grey vesicular olivine basalt	Y
651	Tas-f17-39b	Fig 4 / Area A	Float			Grey vesicular olivine basalt	Y
652	Tas-f17-40	Fig 4 / Area A	Float	627308	5827893	Grey vesicular olivine basalt	Y
653	Tas-f17-40a	Fig 4 / Area A	Float			Grey vesicular olivine basalt	Y
654	Tas-f17-40b	Fig 4 / Area A	Float			Grey vesicular olivine basalt	Y
656	Tas-f17-41	Fig 4 / Area A	Float	627457	5827876	Grey fine grained basalt	Y
657	Tas-f17-41a	Fig 4 / Area A	Float			Grey fine grained basalt	Y
658	Tas-f17-41b	Fig 4 / Area A	Float			Grey fine grained basalt	Y
659	Tas-f17-42	Fig 4 / Area A	Float	627559	5827773	Grey fine grained basalt	Y
660	Tas-f17-42a	Fig 4 / Area A	Float			Grey fine grained basalt	Y
661	Tas-f17-42b	Fig 4 / Area A	Float			Grey fine grained basalt	Y
662	Tas-f17-43	Fig 4 / Area A	Float	627791	5827718	Grey fine grained basalt	Y

Table No. 4
Rock Sample Coordinates and Descriptions

<u>XRF No.</u>	<u>Field No.</u>	<u>Fig. No. / Area</u>	<u>Type</u>	<u>Easting (X)</u>	<u>Northing (Y)</u>	<u>XRF Target and Description and Comment</u>	<u>Magnetic Y or N</u>
Tasse Area A Float Rock Sampling							
663	Tas-f17-43a	Fig 4 / Area A	Float			Grey fine grained basalt	Y
664	Tas-f17-43b	Fig 4 / Area A	Float			Grey fine grained basalt	Y
665	Tas-f17-44	Fig 4 / Area A	Float	627955	5827704	Grey fine grained basalt	Y
666	Tas-f17-44a	Fig 4 / Area A	Float			Grey fine grained basalt	Y
667	Tas-f17-44b	Fig 4 / Area A	Float			Grey fine grained basalt	Y
668	Tas-f17-45	Fig 4 / Area A	Float	627823	5827551	Grey fine grained basalt	Y
669	Tas-f17-45a	Fig 4 / Area A	Float			Grey fine grained basalt	Y
670	Tas-f17-45b	Fig 4 / Area A	Float			Grey fine grained basalt	Y
671	Tas-f17-46	Fig 4 / Area A	Float	627665	5827463	Grey fine grained basalt	Y
672	Tas-f17-46a	Fig 4 / Area A	Float			Grey fine grained basalt	Y
673	Tas-f17-46b	Fig 4 / Area A	Float			Grey fine grained basalt	Y
674	Tas-f17-47	Fig 4 / Area A	Float	627561	5827662	Grey fine grained basalt	Y
675	Tas-f17-47a	Fig 4 / Area A	Float			Grey fine grained basalt	Y
676	Tas-f17-47b	Fig 4 / Area A	Float			Grey fine grained basalt	Y
677	Tas-f17-48	Fig 4 / Area A	Float	627318	5827764	Grey fine grained basalt	Y
678	Tas-f17-48a	Fig 4 / Area A	Float			Grey fine grained basalt	Y
679	Tas-f17-48b	Fig 4 / Area A	Float			Grey fine grained basalt	Y
680	Tas-f17-49	Fig 4 / Area A	Float	627237	5827732	Olivine basalt	Y
681	Tas-f17-49a	Fig 4 / Area A	Float			Olivine basalt	Y
682	Tas-f17-49b	Fig 4 / Area A	Float			Olivine basalt	Y
683	Tas-f17-50	Fig 4 / Area A	Float	627115	5827751	Olivine basalt	Y
684	Tas-f17-50a	Fig 4 / Area A	Float			Olivine basalt	Y
685	Tas-f17-50b	Fig 4 / Area A	Float			Olivine basalt	Y
686	Tas-f17-51	Fig 4 / Area A	Float	627146	5827851	Olivine basalt	Y
687	Tas-f17-51a	Fig 4 / Area A	Float			Olivine basalt	Y
688	Tas-f17-51b	Fig 4 / Area A	Float			Olivine basalt	Y
689	Tas-f17-52	Fig 4 / Area A	Float	627048	5827840	Olivine basalt	Y
690	Tas-f17-52a	Fig 4 / Area A	Float			Olivine basalt	Y
691	Tas-f17-52b	Fig 4 / Area A	Float			Olivine basalt	Y

Table No. 4
Rock Sample Coordinates and Descriptions

<u>XRF No.</u>	<u>Field No.</u>	<u>Fig. No. / Area</u>	<u>Type</u>	<u>Easting (X)</u>	<u>Northing (Y)</u>	<u>XRF Target and Description and Comment</u>	<u>Magnetic</u> Y or N
Tasse Area B Float Rock Sampling							
692	Tas-f17-53	Fig 5 /Area B	Float	625901	5828297	Grey/black fine grained rubbly brittled basalt	Y
693	Tas-f17-53a	Fig 5 /Area B	Float			Grey/black fine grained rubbly brittled basalt	Y
694	Tas-f17-53b	Fig 5 /Area B	Float			Grey/black fine grained rubbly brittled basalt	Y
695	Tas-f17-54	Fig 5 /Area B	Float	625908	5828287	Grey/black fine grained rubbly brittled basalt	Y
696	Tas-f17-54a	Fig 5 /Area B	Float			Grey/black fine grained rubbly brittled basalt	Y
697	Tas-f17-54b	Fig 5 /Area B	Float			Grey/black fine grained rubbly brittled basalt	Y
698	Tas-f17-55	Fig 5 /Area B	Float	625914	5828278	Grey/black fine grained rubbly brittled basalt	Y
699	Tas-f17-55a	Fig 5 /Area B	Float			Grey/black fine grained rubbly brittled basalt	Y
700	Tas-f17-55b	Fig 5 /Area B	Float			Grey/black fine grained rubbly brittled basalt	Y
701	Tas-f17-56	Fig 5 /Area B	Float	625921	5828267	Grey/black fine grained rubbly brittled basalt	Y
702	Tas-f17-56a	Fig 5 /Area B	Float			Grey/black fine grained rubbly brittled basalt	Y
703	Tas-f17-56b	Fig 5 /Area B	Float			Grey/black fine grained rubbly brittled basalt	Y
704	Tas-f17-57	Fig 5 /Area B	Float	625928	5828258	Grey/black fine grained rubbly brittled basalt	Y
705	Tas-f17-57a	Fig 5 /Area B	Float			Grey/black fine grained rubbly brittled basalt	Y
706	Tas-f17-57b	Fig 5 /Area B	Float			Grey/black fine grained rubbly brittled basalt	Y
707	Tas-f17-58	Fig 5 /Area B	Float	625937	5828251	Grey/black fine grained rubbly brittled basalt	Y
708	Tas-f17-58a	Fig 5 /Area B	Float			Grey/black fine grained rubbly brittled basalt	Y
709	Tas-f17-58b	Fig 5 /Area B	Float			Grey/black fine grained rubbly brittled basalt	Y
710	Tas-f17-59	Fig 5 /Area B	Float	625947	5828247	Grey/black fine grained rubbly brittled basalt	Y
711	Tas-f17-59a	Fig 5 /Area B	Float			Grey/black fine grained rubbly brittled basalt	Y
712	Tas-f17-59b	Fig 5 /Area B	Float			Grey/black fine grained rubbly brittled basalt	Y
713	Tas-f17-60	Fig 5 /Area B	Float	625958	5828252	Grey/black fine grained rubbly brittled basalt	Y
714	Tas-f17-60a	Fig 5 /Area B	Float			Grey/black fine grained rubbly brittled basalt	Y
715	Tas-f17-60b	Fig 5 /Area B	Float			Grey/black fine grained rubbly brittled basalt	Y
716	Tas-f17-61	Fig 5 /Area B	Float	625951	5828260	Grey/black fine grained rubbly brittled basalt	Y
717	Tas-f17-61a	Fig 5 /Area B	Float			Grey/black fine grained rubbly brittled basalt	Y
718	Tas-f17-61b	Fig 5 /Area B	Float			Grey/black fine grained rubbly brittled basalt	Y
719	Tas-f17-62	Fig 5 /Area B	Float	625945	5828266	Grey/black fine grained rubbly brittled basalt	Y
720	Tas-f17-62a	Fig 5 /Area B	Float			Grey/black fine grained rubbly brittled basalt	Y
721	Tas-f17-62b	Fig 5 /Area B	Float			Grey/black fine grained rubbly brittled basalt	Y

Table No. 4
Rock Sample Coordinates and Descriptions

<u>XRF No.</u>	<u>Field No.</u>	<u>Fig. No. / Area</u>	<u>Type</u>	<u>Easting (X)</u>	<u>Northing (Y)</u>	<u>XRF Target and Description and Comment</u>	<u>Magnetic</u> Y or N
Tasse Area B Float Rock Sampling							
722	Tas-f17-63	Fig 5 /Area B	Float	625938	5828273	Grey fined grain olivine basalt	Y
723	Tas-f17-63a	Fig 5 /Area B	Float			Grey fined grain olivine basalt	Y
724	Tas-f17-63b	Fig 5 /Area B	Float			Grey fined grain olivine basalt	Y
725	Tas-f17-64	Fig 5 /Area B	Float	625931	5828280	Grey fined grain olivine basalt	Y
726	Tas-f17-64a	Fig 5 /Area B	Float			Grey fined grain olivine basalt	Y
727	Tas-f17-64b	Fig 5 /Area B	Float			Grey fined grain olivine basalt	Y
728	Tas-f17-65	Fig 5 /Area B	Float	625925	5828286	Grey fined grain olivine basalt	Y
729	Tas-f17-65a	Fig 5 /Area B	Float			Grey fined grain olivine basalt	Y
730	Tas-f17-65b	Fig 5 /Area B	Float			Grey fined grain olivine basalt	Y
731	Tas-f17-66	Fig 5 /Area B	Float	625921	5828295	Grey fined grain olivine basalt	Y
732	Tas-f17-66a	Fig 5 /Area B	Float			Grey fined grain olivine basalt	Y
733	Tas-f17-66b	Fig 5 /Area B	Float			Grey fined grain olivine basalt	Y
734	Tas-f17-67	Fig 5 /Area B	Float	625930	5828305	Grey fined grain olivine basalt	Y
735	Tas-f17-67a	Fig 5 /Area B	Float			Grey fined grain olivine basalt	Y
736	Tas-f17-67b	Fig 5 /Area B	Float			Grey fined grain olivine basalt	Y
737	Tas-f17-68	Fig 5 /Area B	Float	625937	5828295	Grey/black fine grained rubbly brittled basalt	Y
738	Tas-f17-68a	Fig 5 /Area B	Float			Grey/black fine grained rubbly brittled basalt	Y
739	Tas-f17-68b	Fig 5 /Area B	Float			Grey/black fine grained rubbly brittled basalt	Y
740	Tas-f17-69	Fig 5 /Area B	Float	625946	5828285	Grey/black fine grained rubbly brittled basalt	Y
741	Tas-f17-69a	Fig 5 /Area B	Float			Grey/black fine grained rubbly brittled basalt	Y
742	Tas-f17-69b	Fig 5 /Area B	Float			Grey/black fine grained rubbly brittled basalt	Y
743	Tas-f17-70	Fig 5 /Area B	Float	625954	5828278	Grey fined grain olivine basalt	Y
744	Tas-f17-70a	Fig 5 /Area B	Float			Grey fined grain olivine basalt	Y
745	Tas-f17-70b	Fig 5 /Area B	Float			Grey fined grain olivine basalt	Y
746	Tas-f17-71	Fig 5 /Area B	Float	625963	5828265	Grey fined grain olivine basalt	Y
747	Tas-f17-71a	Fig 5 /Area B	Float			Grey fined grain olivine basalt	Y
748	Tas-f17-71b	Fig 5 /Area B	Float			Grey fined grain olivine basalt	Y