

2017 Geophysical (Gravity) Survey
Sinclair Mineral Claims

St. Mary River Region (N.T.S. 082F09)
East Kootenay - Purcell Range

Lat, Lon: 49°34'51" N, 116°17'32" W

Ft. Steele Mining Division
Kimberley, British Columbia

Reported by

E. (Ted) Sanders, prospector

January, 2018



Ministry of Energy, Mines & Petroleum Resources
 Mining & Minerals Division
 BC Geological Survey



Assessment Report
 Title Page and Summary

TYPE OF REPORT [type of survey(s)]: Technical Work [Geophysical Survey]

TOTAL COST: \$7,800.00

AUTHOR(S): Edward (Ted) Sanders

SIGNATURE(S): E. (Ted) Sanders

NOTICE OF WORK PERMIT NUMBER(S)/DATE(S): _____ YEAR OF WORK: 2017

STATEMENT OF WORK - CASH PAYMENTS EVENT NUMBER(S)/DATE(S): 5670863 (Oct 26, 2017) ; 5680897 (Jan 9, 2018)

PROPERTY NAME: Pakk (Roar)

CLAIM NAME(S) (on which the work was done): Sinclair, Sinclair-2

COMMODITIES SOUGHT: Base and Precious Metals

MINERAL INVENTORY MINFILE NUMBER(S), IF KNOWN: _____

MINING DIVISION: Fort Steele

NTS/BCGS: 082F09 / 082F059

LATITUDE: N 49° 34' 51" LONGITUDE: W 116° 17' 32" (at centre of work)

OWNER(S):

1) E. (Ted) Sanders 2) _____

MAILING ADDRESS:

P.O. Box 154, Fernie, B.C., V0B 1M0

OPERATOR(S) [who paid for the work]:

1) _____ 2) _____

MAILING ADDRESS:

PROPERTY GEOLOGY KEYWORDS (lithology, age, stratigraphy, structure, alteration, mineralization, size and attitude):

Lower Aldridge, Middle Aldridge, Sullivan Horizon, LMC, Quartzite, Siltstone, Pyrrhotite, Magnetite

REFERENCES TO PREVIOUS ASSESSMENT WORK AND ASSESSMENT REPORT NUMBERS: 35575 ; 28424 ; 23142 ; 23622

Next Page

TYPE OF WORK IN THIS REPORT	EXTENT OF WORK (IN METRIC UNITS)	ON WHICH CLAIMS	PROJECT COSTS APPORTIONED (incl. support)
GEOLOGICAL (scale, area)			
Ground, mapping	4.5 km alpine traverse, rock analysis	Sinclair-2 [1055795]	\$1,000.00
Photo interpretation			
GEOPHYSICAL (line-kilometres)			
Ground			
Magnetic			
Electromagnetic			
Induced Polarization			
Radiometric			
Seismic			
Other	35 Gravity Stations (~5 km) & mapping	Sinclair-2 1055795; Sinclair 1052363	\$6,450.00
Airborne			
GEOCHEMICAL (number of samples analysed for...)			
Soil			
Silt			
Rock			
Other			
DRILLING (total metres; number of holes, size)			
Core			
Non-core			
RELATED TECHNICAL			
Sampling/assaying			
Petrographic			
Mineralographic			
Metallurgic			
PROSPECTING (scale, area)			
PREPARATORY / PHYSICAL			
Line/grid (kilometres)	4.5 km trail & terrain assessment	Sinclair-2 [1055795] Sanders	\$350.00
Topographic/Photogrammetric (scale, area)			
Legal surveys (scale, area)			
Road, local access (kilometres)/trail			
Trench (metres)			
Underground dev. (metres)			
Other			
TOTAL COST:			\$7,800.00

TABLE OF CONTENTS	Page
TITLE PAGE AND SUMMARY.....	1 - 3
LIST OF ILLUSTRATIONS.....	5
1.0 INTRODUCTION.....	6
2.0 PROPERTY	6
3.0 LOCATION AND ACCESS	7
4.0 PHYSICAL GEOGRAPHY.....	7
5.0 EXPLORATION HISTORY.....	8
6.0 REGIONAL GEOLOGY.....	9
7.0 LOCAL GEOLOGY.....	11
8.0 GEOPHYSICAL DATA (Overview)	12
8.1 Aeromag Survey and Interpretation.....	13
8.2 56 KHz EM Map and Fieldtrip.....	15
8.3 2017 Gravity Survey	16
8.4 Rock Density Study.....	16
8.5 Terrain Corrections.....	17
8.6 Gravity Data Mapping and Interpretation.....	18
9.0 ROCK SAMPLE DESCRIPTIONS	21
10.0 SUMMARY.....	23
11.0 RECOMMENDATIONS.....	23
12.0 COST STATEMENT.....	24
13.0 STATEMENT OF QUALIFICATIONS.....	25
14.0 REFERENCES.....	25
15.0 APPENDICES.....	26

LIST OF ILLUSTRATIONS

Page

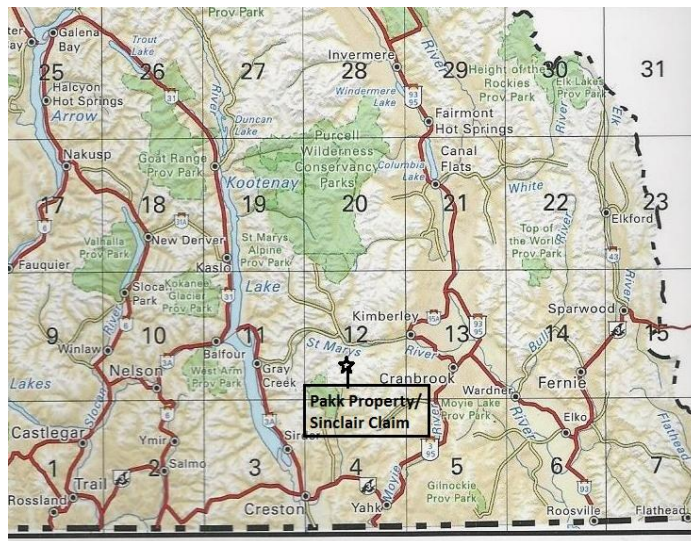
Figure 1 – Kootenay Regional Map.....	6
Figure 2 – Mineral Titles Online Map – Sinclair Mineral Claims.....	7
Figure 3 – GSC Geology - St. Mary Map sheet 082F09 (SW Quadrant).....	8
Figure 4 – Belt-Purcell Basin - Purcell Anticlinorium.....	9
Figure 5 – East Kootenay Surface Geology.....	10
Figure 6 – GSC Geology - St. Mary Map sheet 082F09 (SW Quadrant).....	11
Figure 7 – East Kootenay Geology - EKGDB Gravity Stations	13
Figure 8 – East Kootenay Aeromag – Total Mag Intensity map.....	14
Figure 9 – Google Earth Image- Traverse – 56 KHz EM inset map.....	15
Figure 10 – Meachen FSR – Bouguer Profiles (density 2.70).....	17
Figure 11 – Meachen FSR – Bouguer Profiles (density 2.70 & 2.75).....	17
Figure 12 – Pakk Property – Bouguer Anomaly Map (density= 2.75).....	18
Figure 13 – Pakk Property – 4 km Residual Gravity Map.....	19
Figure 14 – Pakk Property – Two-Pass Residual Gravity Map.....	20
Figure 15 – Rock Sample #2 – Quartzite.....	21
Figure 16 – Rock Sample #3 – Carbonaceous Wacke Laminate.....	22

1.0 INTRODUCTION

The Sinclair mineral claims are located in southeastern British Columbia approximately 35 kilometres west of Cranbrook. The claims lie within the former Cominco Roar property, which was explored and drilled by Cominco in their search for new Sedex deposits in the 1990's. In 1999 the area was staked (as the Pakk claims) by Super Group Holdings Ltd. In June 2014 some of the Pakk claims were forfeited and the original Sinclair claim (title: 1028693) was staked by the author. That claim was subsequently subdivided and work on the Sinclair and Sinclair-2 claims (titles: 1052363 & 1055795) is reported here. Research of available geoscience data suggests that a magnetic anomaly isolated within the Sinclair and adjacent Pakk claims (to the south) has defined an area of interest.

Figure 1

Kootenay Regional Map



From September 30 to October 27, 2017, assessment work was carried out for the Sinclair mineral claims. Work included a one-day reconnaissance traverse of the upper basin of the Sinclair-2 claim. Terrain was assessed regarding feasibility for future geophysical work, and five rock samples were collected for analysis and a density study. A two-day gravity survey was done two weeks later. This report provides details of the gravity survey, interpretive work, and a brief update of existing geoscience mapping subsequent to assessment report #35575. Sources of geoscience data include the 1995 East Kootenay Regional Aeromag Survey and the E.K. Gravity Database (EKADB, GeoscienceBC file #2013-23).

2.0 PROPERTY

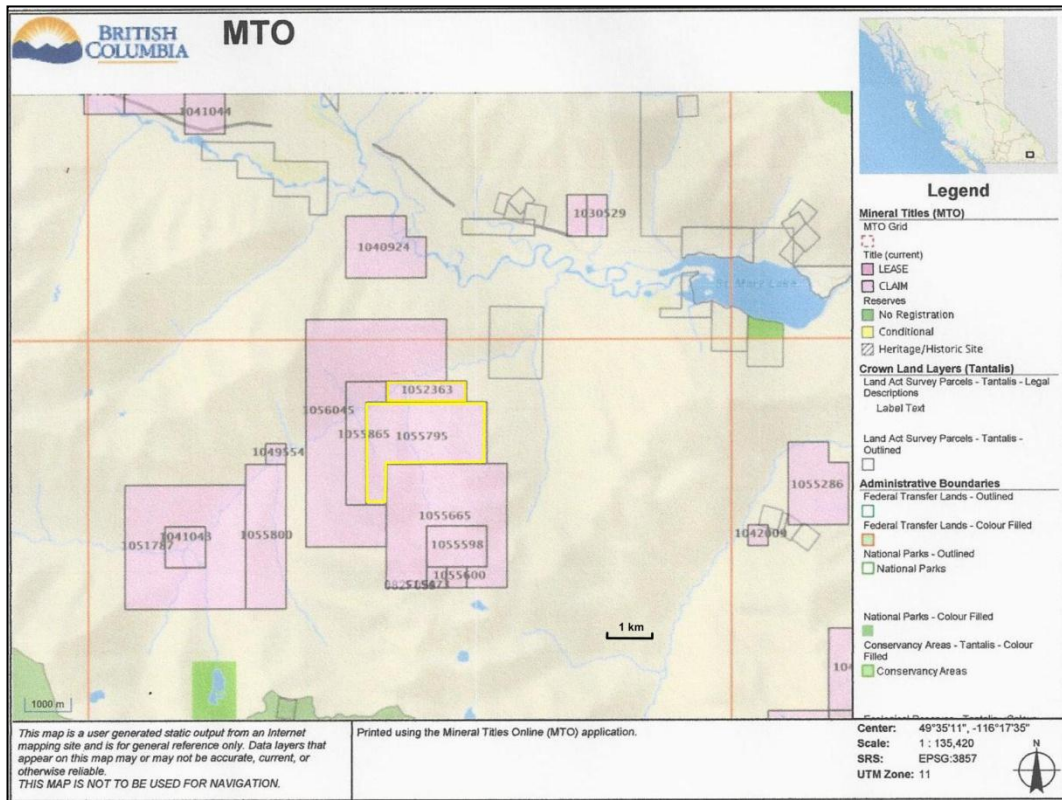
The Sinclair and Sinclair-2 mineral claims lie within the Pakk property. They are located on NTS map sheet 082F09 (BCGS 082F059) and are 100% owned by E. (Ted) Sanders of Fernie, B.C.

<u>CLAIM NAME</u>	<u>TENURE</u>	<u>AREA</u>	<u>DATE of REGISTRY (event)</u>
Sinclair	1052363	83.75	June 4, 2017 (5671253)
Sinclair-2	1055795	418.84	June 2, 2014 (5507053)

3.0 LOCATION AND ACCESS

The claims are located approximately 25 kilometres southwest of the historic world-class Sullivan lead/zinc/silver mine in Kimberley, British Columbia. The claims can be accessed by travelling west along the partially paved St. Mary Lake Road which intersects Hwy. 95A one kilometre north of downtown Marysville. After travelling 16 kilometres, turn left on the St. Mary River Road and proceed (across the bridge) for 0.6 kilometres, turning right on the Hellroaring Creek Forest Service Road. Follow this road for 1 kilometre and turn right onto the Meachen Forest Service Road (FSR). After travelling approximately 8 km, entrance to an older logging road on the left marks the east end of the survey work reported here.

Figure 2 Mineral Titles Online – Sinclair Mineral Claims



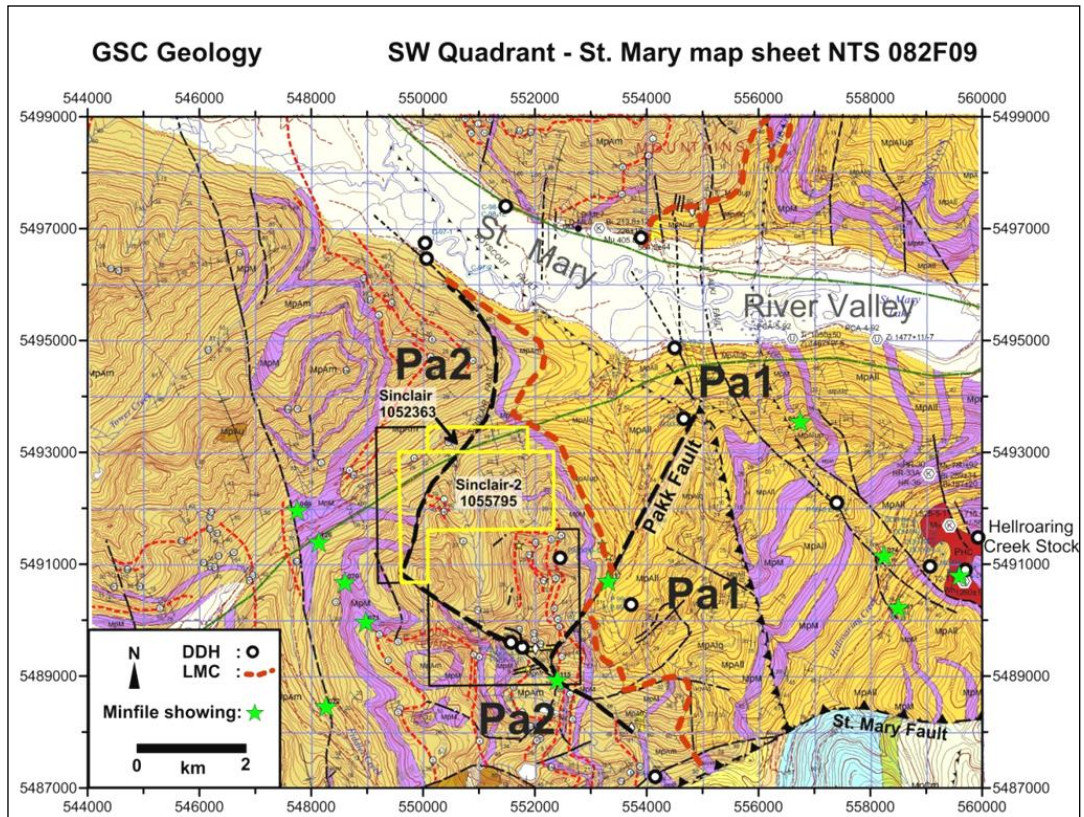
4.0 PHYSICAL GEOGRAPHY

The mineral claims are situated within the Purcell Mountain range west of the Rocky Mountain Trench, and 8 km southwest of St. Mary Lake. Elevations range from 1200 metres to over 2400 metres on some mountain ridges. Forest cover consists of mature and immature stands of a mixture of pine, fir and larch with local patches of spruce and cedar. The Sinclair Creek drainage lies east of the claims and was logged in the last 60 years. The upper basin of the Sinclair-2 claim can be reached by hiking and consists of talus slopes, rugged terrain, and a creek. Lower elevations of the claim are heavily treed with several areas of windfall.

5.0 EXPLORATION HISTORY

The Pakk property has been explored for over 100 years and hosts several mineral occurrences of interest although no significant ore deposit has been discovered. Early exploration in the late 1800's focused on the copper mineralization associated with the Moyie intrusions west of the Sinclair claim (see Minfile locations, Figure 3). There was reported malachite, chalcopyrite, pyrrhotite and pyrite mineralization in quartz or quartz-calcite veins, all within or bounding diorite or gabbro (Moyie) sills.

Figure 3



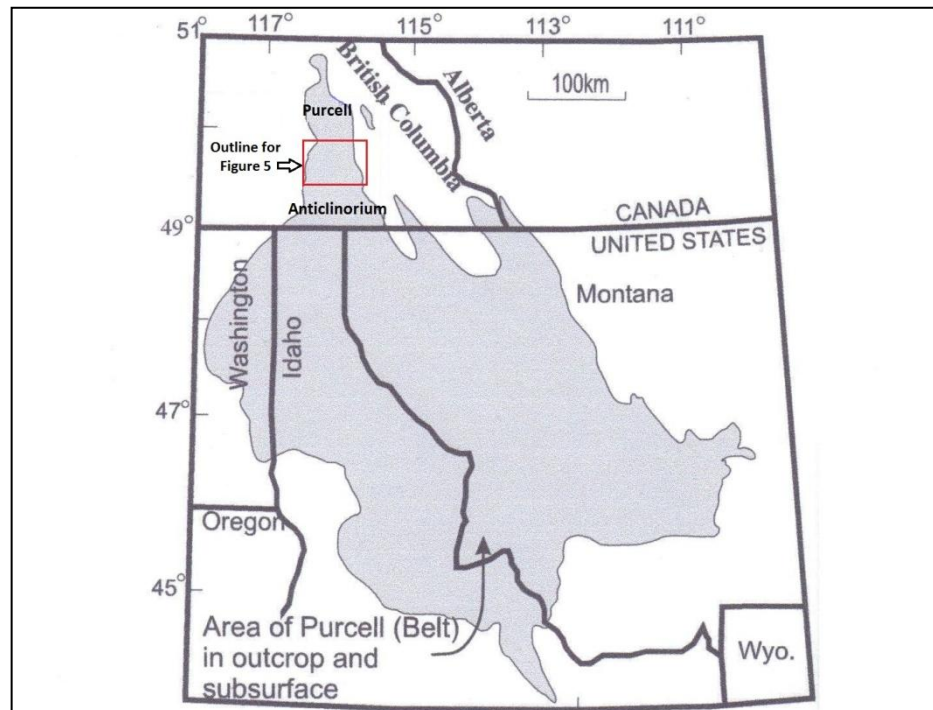
In 1994/95 Cominco explored the area. "The work entailed geological mapping, soil geochemistry, and ground UTEM geophysics (AR 23,142 & 23,622). A single DDH (now called P-00-15) was drilled in an upper tributary of Sinclair Creek in 1995. In 1999, Super Group Holdings became interested in the area due to the presence of Sullivan Horizon and much improved access. Prospecting led to the discovery of mineralized float of tourmalinized fragmental in the Jack Creek drainage. Subsequent mapping and prospecting established the source of the float higher in the drainage and three short holes were drilled on the gabbro-fragmental dyke complex. More mapping established the presence of significant synsedimentary faulting and deepening of the Cominco hole (P-00-15) intersected laminated Sullivan Horizon rocks and footwall fragmental in 2000. In late 2003 Klondike Gold optioned the property and in 2004 drilled a hole (P-04-1) about 1.5 kilometres SSW of the original Cominco hole.¹

6.0 REGIONAL GEOLOGY

The St. Mary River area is located within the Purcell Anticlinorium, a broad, gently north-plunging structure with dominantly east-verging faulting and folding (see Figure 4). The Purcell Anticlinorium is cored by the Proterozoic Purcell Supergroup, a siliciclastic (and lesser) carbonate sequence over 12 kilometres thick deposited in an intracratonic rift basin. The entire basin straddles the 49th parallel and is known as the Belt Basin in the U.S. and Purcell Basin to the north, and collectively as the Belt-Purcell Basin. It is over 750 km long and 550 km wide, extending from southeastern British Columbia southwards into Idaho, western Montana, and eastern Washington in the U.S.A.

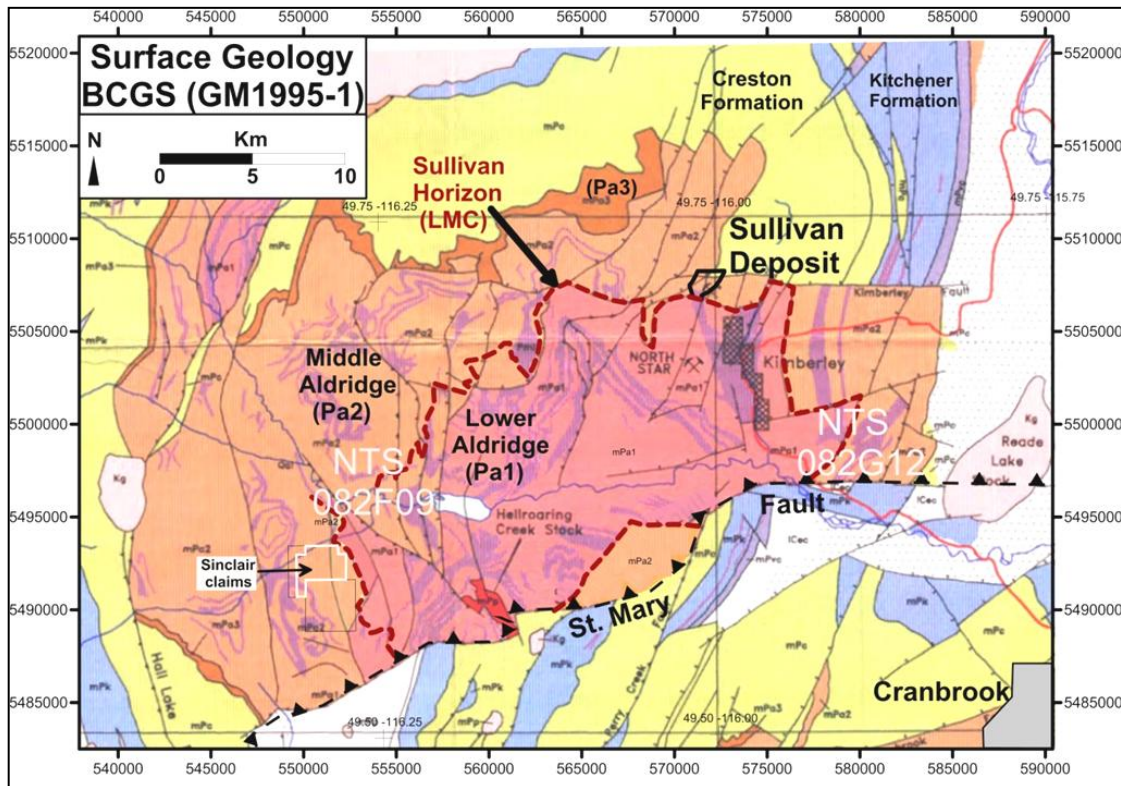
Figure 4

Belt-Purcell Basin – Purcell Anticlinorium



The Aldridge Formation (Pa) is considered the lowermost division of the Purcell Supergroup. The Aldridge is divided into Lower (Pa1), Middle (Pa2) and Upper (Pa3) units (see Figure 5). The Lower Aldridge is typically thin bedded, rusty weathering, fine-grained quartzitic wackes, siltstones and argillite. The top of the Lower Aldridge is characterized by a package of laminated siltstones and mudstones, known as the “Sullivan Horizon”. The massive sulphide ore body of the Sullivan deposit is hosted in this package. Various geological sources refer to the contact between the Lower and Middle Aldridge as the “LMC”, indicated on Figure 5 by the red dashed line (as defined on the GSC St. Mary Geology map). The Middle Aldridge (Pa2) is typically thin, medium to thick bedded grey weathering quartz wackes, quartzitic wackes, wackes and siltstone interbedded with argillite and silty argillite. The Middle Aldridge contains about 15 marker units between 0.1 to 10 metres thick that have distinctive thin, alternating patterns of light and dark siltstone laminae. Each marker unit has unique thickness and can be correlated over several hundred kilometres.

Figure 5



The Upper Aldridge Formation (Pa3) consists of rusty weathering and dark grey, very thin-bedded to laminated siltstone and argillite. The contact with the overlying Creston Formation is relatively abrupt, and is placed where green tinged siltite layers first appear. The Creston Formation is composed of grey, green and maroon quartz wacke and siltstone with minor white quartz arenite. Above the Creston Formation is the Kitchener Formation, largely consisting of dolomitic siltstone and dolomitic quartzite.

Rocks of the Purcell Supergroup have undergone several separate phases of deformation dating from Middle Proterozoic through to Paleocene. Purcell sedimentation may have ended with the onset of the East Kootenay Orogeny (1300-1350 Ma), a metamorphic and extensional event. This event was associated with folding and local development of cleavage. The extensional Goat River Orogeny (800-900 Ma) resulted in rifting, large-scale block faulting, and erosion of up to 4 kilometres of Purcell strata. It is interpreted to have occurred during initiation of the Cordilleran miogeocline.

By early Paleozoic time, continental separation had occurred as platformal and miogeoclinal sediments were deposited on a western continental margin. The Columbia Orogeny (150-160 Ma) during Middle Jurassic was characterized by the pasting of island arc terranes onto western North America with deformation, metamorphism and plutonism. The Laramide Orogeny (70-100 Ma) resulted in the horizontal, northeast directed compression of Proterozoic strata and the overlying Paleozoic miogeoclinal prism onto the western margin of North America. Easterly verging thrust faults and folds developed with normal faults and westerly verging back thrusts, contributing to the development of the broad northerly striking anticlinal structure seen in the Hall Lake Block north of the St. Mary Fault.

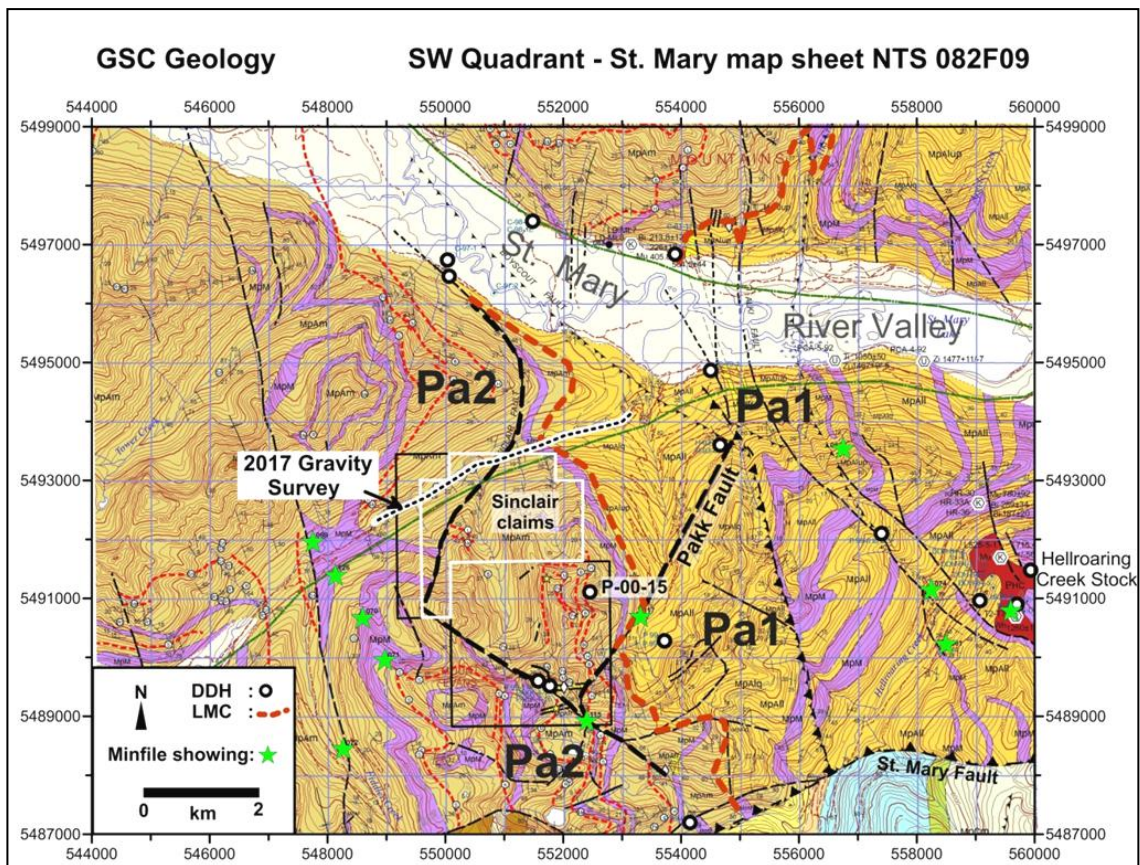
7.0 LOCAL GEOLOGY

The Sinclair claims lie within the Hall Lake Block of Aldridge Formation sediments in the hanging wall of the St. Mary Fault (Figure 5). The block forms a broad anticline and, located on the southwestern limb of the block, stratigraphy dips southwest at the claims.

The Sinclair claims host Middle (Pa2) Aldridge Formation strata at surface, and thus host the LMC at depth, while strata further east are Lower (Pa1) Aldridge (Figure 6). The LMC is known to lie just above the stratigraphic horizon hosting the historic Sullivan lead/zinc/silver deposit in Kimberley, British Columbia. To date, the Sullivan ore body, North Star, and Kootenay King deposit (30 kilometres to the east) are the only sedimentary exhalative (Sedex) deposits that have been discovered in the region.

Sedex deposits typically occur in small structural basins, commonly bounded by faults, and recognition of these basins in the geological history is an important tool for their exploration. Sedex deposits are very attractive exploration targets, due in large part to their form and shape as massive deposits of metallic sulphides. As they formed during sedimentation, exploration for them is directed initially to locating a favourable stratigraphic and structural setting – a small structural basin, bounded by faults, in an area of enhanced heat flow. Subsurface exploration typically includes both magnetic and conductance studies (Hoy, T.).

Figure 6



The Middle Aldridge (Pa2) is typically thin, medium to thick bedded grey weathering quartz wackes, quartzitic wackes, wackes and siltstone. The Middle Aldridge contains about 15 marker units between 0.1 to 10 metres thick that have distinctive thin, alternating patterns of light and dark siltstone laminae. These markers (red dashed lines) can be seen on Figure 6. Each marker unit has unique thickness and can be correlated over several hundred kilometres. The BCGS St. Mary Geology map indicates Hiawatha markers are located in the upper mountain basin of the Sinclair claims.

Both the Lower and Middle divisions of the Aldridge Formation are intruded by Middle Proterozoic (dioritic to gabbroic) sills called the Moyie Sills (light purple areas seen on Figures 5 & 6). These sills (and rarely, dikes) can vary in thickness from a few to several hundred metres, and their cumulative thickness constitutes up to 30% of the Lower and up to 15% of the Middle Aldridge successions. Contact relationships between sills and Aldridge rocks indicate that some were extruded at very shallow depths into unconsolidated, water-saturated sediments. Others, with fine-grained chilled margins, have contact metamorphosed the country rocks.

“Structurally the Pakk is more complex than initially appeared to be the case. Located in the hangingwall to the regional St. Mary Fault, the Lower Aldridge through Middle Aldridge sediments and intrusives are displaced along east-west, northwest, and northeast trending faults which have translational movements up to about one kilometer. The down-dip component appears to be several hundreds of metres. The northeast-striking Pakk Fault has been established as a syndepositionally active structure which influenced sedimentation within this active sub-basin at about Sullivan Time and later. The entire package is also folded on various scales with dominant north-south fold axes.”¹

8.0 GEOPHYSICAL DATA (Overview)

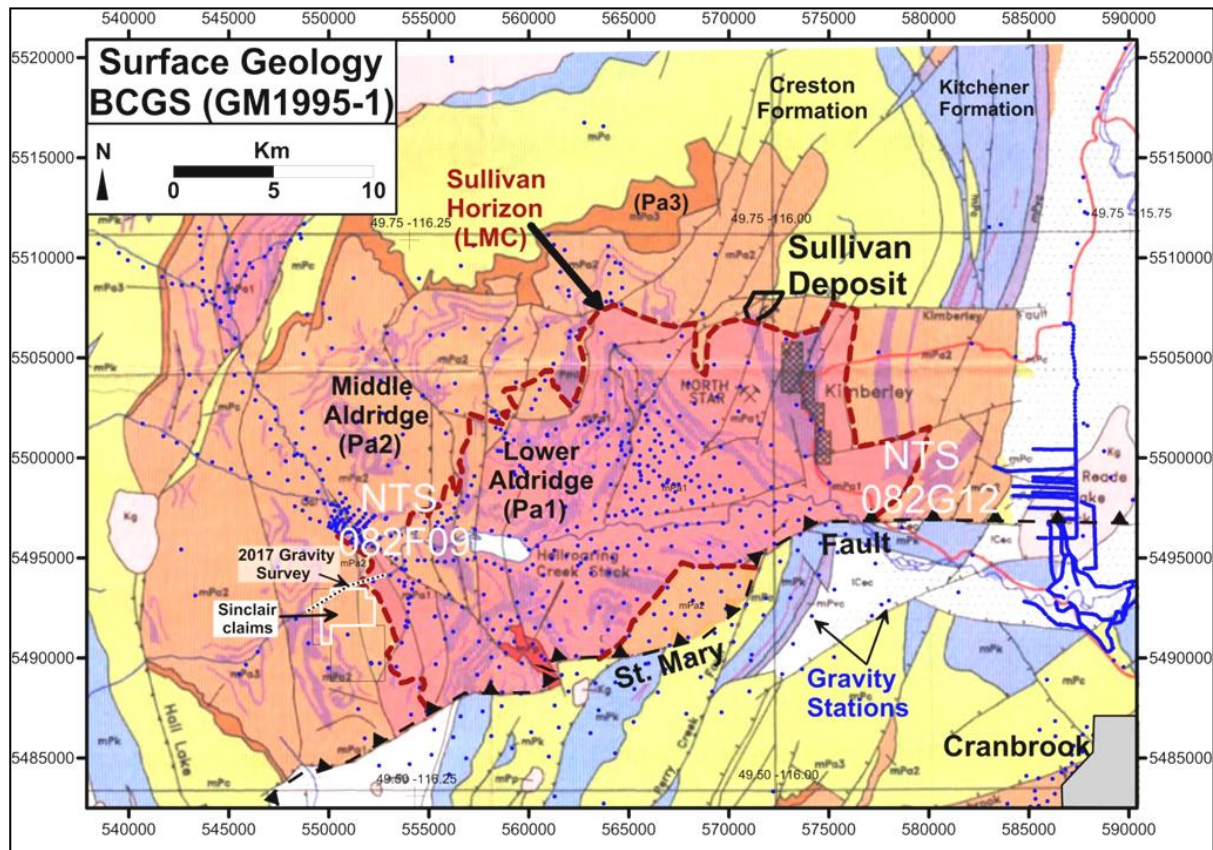
The first reported ground survey on the Roar (Pakk) property was a UTEM survey by Cominco in 1994. Several conductors and a zone of conductivity were noted on and near the Sinclair claims (see Figure 9). At the time, UTEM was believed to be capable of detecting conductive sources to a depth of 500 metres. In 1995 Cominco drilled a single hole, labelled P-00-15 on Figure 6, to test a single conductor southeast of the Sinclair-2 claim. None of the UTEM conductors located on the Sinclair-2 claim have been drill-tested.

In 1995 a consortium of the BC Ministry of Employment and Investment, the BCGS, and the GSC funded a high resolution Aeromag survey over the St. Mary River area primarily north of the St. Mary Fault. The survey included Aeromag, EM Conductivity, and Radiometric sampling. The Aeromag data is available from NRCAN in map, grid and raw flight-line data format.

In the last two years more research work has been done with the airborne magnetic and EM data grids from the 1995 survey. The 56 KHz frequency EM map, which responds to only the top few metres, shows a small EM spike on the Sinclair-2 claim. On September 30, 2017, this 56 KHz EM anomaly was targeted during a hiked traverse of the claim (see section 8.2). The traverse was 4.5 km in length with an elevation increase of more than 500 metres. The high terrain of the mineral claim was assessed for suitability of future survey work. Rock samples were acquired for density analysis, and two rock samples found proximal to the EM anomaly contained pyrrhotite and exhibited magnetic character (see Section 9.0).

Background gravity data (Figure 7) is available from Geoscience BC (data file #2013-23). Existing gravity stations on the Meachen FSR had an average station spacing of 1000 metres. On October 14 & 15, 2017, ground gravity data was acquired on the Meachen FSR which intersects the Sinclair claims. Five kilometres of new data was acquired at 200 and 100 metre spacing in order to create a detailed Bouguer Anomaly profile along the road, and provide a baseline for future gravity survey work.

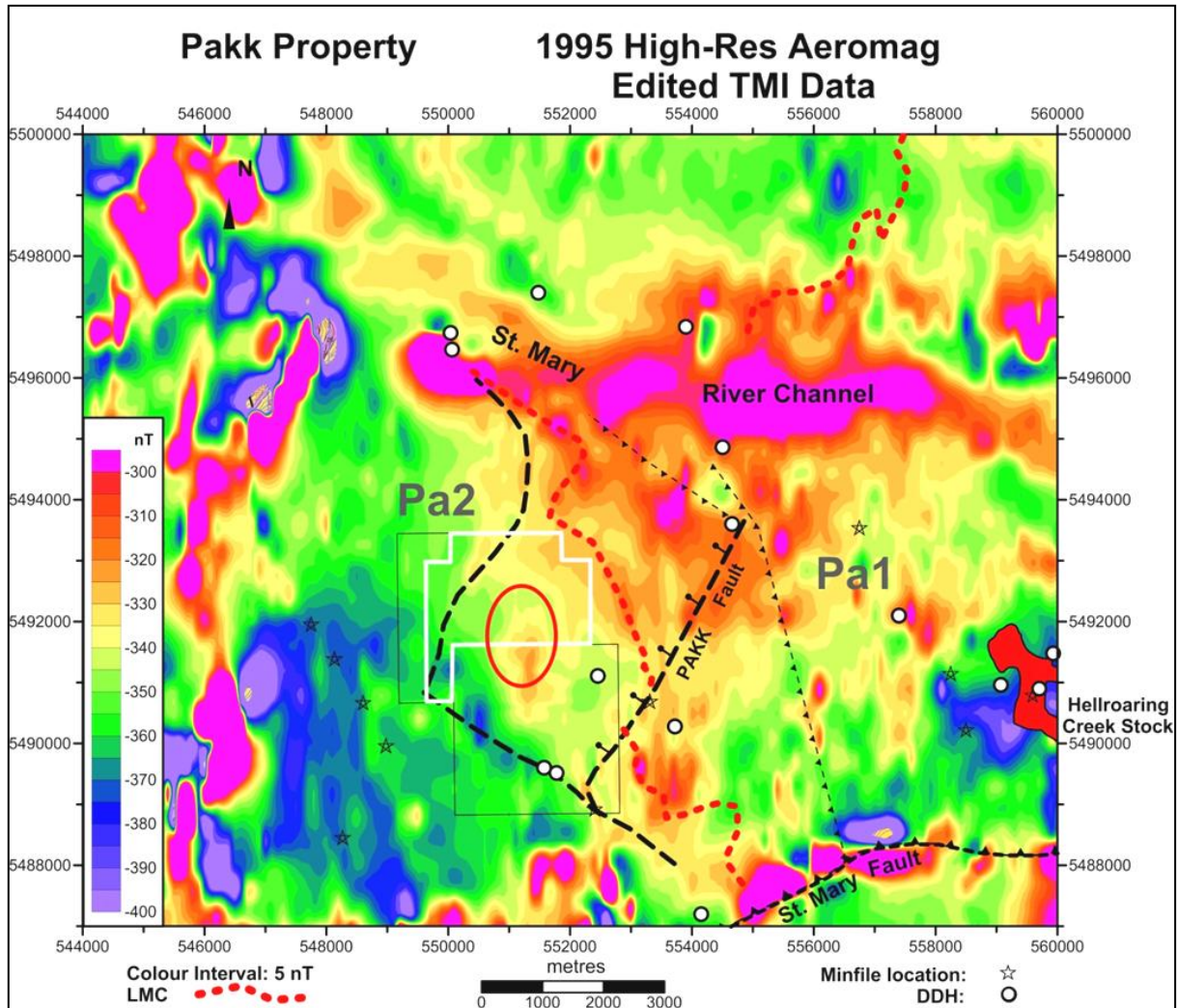
Figure 7 East Kootenay Geology and EKGBD Gravity Stations



8.1 Aeromag Survey and Interpretation

The Residual Total Field (RTF) grid, available from NRCAN, has the IGRF field removed from the levelled Total Field data. The map made from the edited raw RTF data is still referred as a Total Field or Total Mag Intensity (TMI) map in this report. Because of the large amplitude range of the Mag data for this area, colour (no contour lines) is the best way to show the Total Field map (Figure 8) which covers the southwest quadrant of the region shown on Figure 7. Magnetic susceptibilities of Aldridge Formation rocks are relatively low compared to Middle Creston Formation and Cretaceous intrusives (containing magnetite) to the west and the south. Magnetite-laden river detritus from Middle Creston Formation rock and/or Cretaceous intrusives (upstream) are believed to be the primary source of the shallow-sourced Mag highs seen along the floor of the St. Mary River valley.

Figure 8



After repair and re-gridding of raw Mag data for a flight line-segment (described in AR 35575), a solitary dipolar magnetic anomaly is visible within Middle Aldridge (Pa2) rock (Figure 8). Several UTEM conductors were noted on and proximal to the area of interest (AOI) defined by the red ellipse. The 15 nT amplitude and long wavelength (large dimension) of this Mag anomaly suggests it could be sourced from Sullivan Horizon, estimated to be 500-800 metres below surface in the upper basin of the claim.

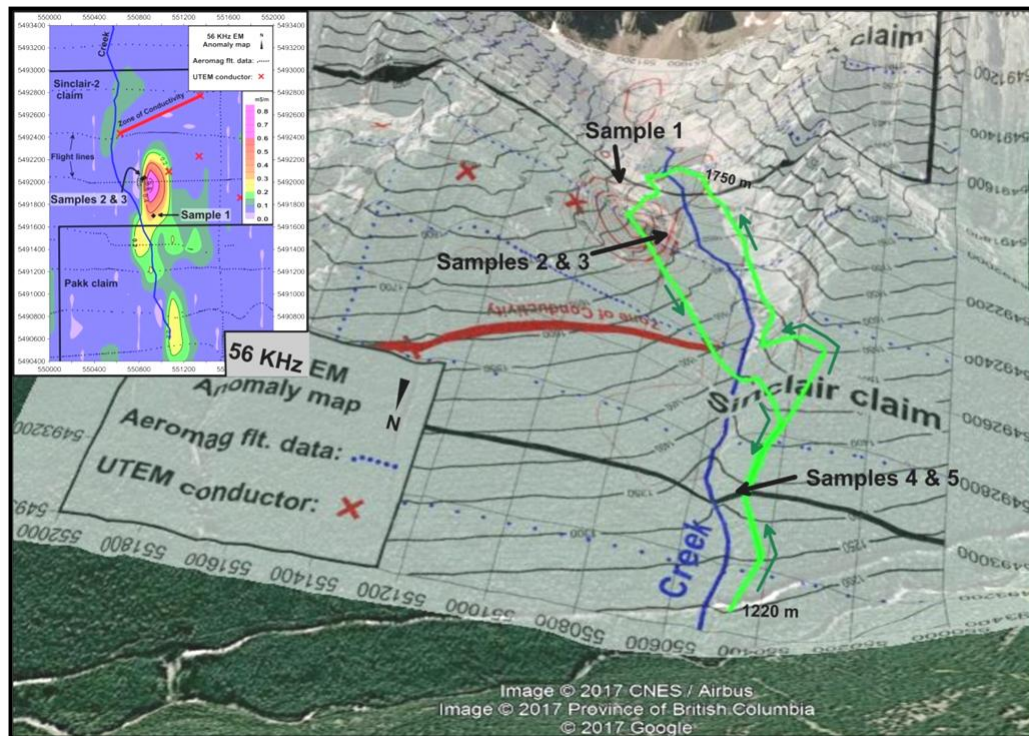
Except for the anomalous high, TMI levels decrease to the west across the Sinclair claims. This gradient has two likely sources. Lower Aldridge (Pa1) rock to the east shows elevated magnetic susceptibility relative to Middle Aldridge (Pa2) and gets progressively deeper west of the LMC. The second factor is related to topography. The survey helicopter was forced to climb over a 400 metre high mountain ridge immediately west of the AOI, thus rapidly increasing magnetic source-sensor separation and contributing to decreased magnetic intensity levels here. As a result, the AOI may extend further west than the anomaly indicates.

8.2 56 KHz EM Map and Fieldtrip

On September 30, 2017, the author accompanied local prospector Sean Kennedy on a traverse of the Sinclair-2 claim. The traverse, shown in light green on the Google Earth image below, covered a 4.5 kilometre circuit ascending into a mountain basin. The traverse started at the Meachen Creek FSR (bottom of image) on the west side of the creek and progressed steeply upwards under tree cover on a trail once used to access the 1994 UTEM survey lines. The trail leads up to, and ends at, the easiest access down into the upper basin. The traverse continued southeasterly, ascending along the base of a talus slope towards the south end of the claim (1750m), then northeast to the east side of the basin.

The high terrain of the mineral claim was assessed for suitability for future ground geophysical work (slope, shrubbery, tree canopy, etc.). The old lower trail needs to be cleared of deadfall for future access. One objective of the traverse was to access a 56 KHz EM anomaly on the east side of the creek, seen as the red bulls-eye of contours on Figure 9 and the magenta-coloured anomaly on the colour inset map.

Figure 9 Google Earth Image (view from the north)



The hike was successful and reached the area of interest however, only about 10 minutes was spent traversing the EM anomaly site before continuing back to the truck. Severe tree windfall on the east side of the creek inhibits access down and the creek was crossed to reacquire the old trail on its west side.

Three rock samples of interest were located proximal to the EM anomaly and Section 9.0 provides geological descriptions for these samples. Locations for these samples are posted on the colour inset map on Figure 9. Samples 2 and 3 contain pyrrhotite and suggest that the EM anomaly may also have magnetic character. The five rock samples were also used as part of a rock density study (Section 8.4).

8.3 2017 Gravity Survey

The northern edge of the inferred source of the solitary Aeromag anomaly (Figure 8) is estimated to lie over 500 metres south of the Meachen FSR, at a depth over 500 metres below surface. On October 14 & 15, 2017, a gravity survey was acquired along the service road to get a detailed NE-SW profile view of the gravity north of the AOI. The intent was to see if there is gravity gradient that correlates with the Mag gradient here, and to measure the gravity response of a gabbro sill that intersects the road near the east end of the surveyed portion of the road. There was also a chance that, if a buried mineralized body was nearby, a small component of its gravity anomaly might affect gravity readings along the road. A one day traverse into the upper mountain basin south of the road was tentatively planned for gravity work.

The gravity survey contractor was Excel Geophysics Inc of High River, Alberta. A GPS/RTK base station was set up part way up a logged ridge on the north side of Meachen Creek, accessed by a bridge near the east end of the survey area. This location provided good satellite and radio contact for the survey. GPS base station locations were also scouted higher and further west for future work. The gravity base used by EGI was located at the Heritage Inn² in Cranbrook and is tied to CGSN base #9025-1980 in Cranbrook.

Early season accumulations of wet snow on the steep lower trail prevented a traverse into the higher terrain. However, 30 new gravity stations were acquired on the service road, 3 were acquired on logging roads north of Meachen Creek, and 2 were on lower elevations of the trail leading to the upper basin. Complete data listings of Observed Gravity and Bouguer Anomaly calculations (density 2.67) are included in Appendix 1.

8.4 Rock Density Study

Five rock samples were obtained on the Sinclair-2 claim. Three were quartzites and two were laminated siltstone. To calculate density each sample was weighed both in (Ww), and out of (Wa), water. The formula $[W_a / (W_a - W_w)]$ was applied for each sample.

	UTM Location (Zn 11)	Description	Density
Sample 1:	550930E, 5491700N	Coticule beds in laminated subwacke	2.72 gm/cc
Sample 2:	550850E, 5492040N	Quartzitic Wacke	2.70 “
Sample 3:	550830E, 5492030N	Carbonaceous Wacke Laminate	2.74 “
Samples 4 & 5:	550520E, 5492920N	Middle Aldridge float (siltstone)	2.66 “

Rock density information from the samples was factored in with rock density information obtained from GSC open file 7083 (Mike Thomas, pp. 12, 13) and previous work by the author. Due to proximity to several gabbro sills (average density 3.0 gm/cc) at the surface, higher densities were warranted for data mapping. A density of **2.75 gm/cc** was chosen for data processing. The new gravity data was merged with the existing dataset (EKGDB), then reprocessed and mapped at density 2.75 for images in this report.

8.5 Terrain Corrections

Two sets of inner terrain corrections were acquired during the field survey; one by the Excel Geophysics (EGI) meter operator and one by the survey assistant (author). After the survey, EGI calculated 30 km outer terrain corrections (OTC) for each gravity station using their software and parameters. 30 km OTCs were also calculated (*Ted Sanders Consulting*) using the same (EGI proprietary) software and parameters as used for the gravity stations in the database. A table of the two sources of terrain corrections (density 2.67) is found in Appendix 2. Differences between the two methods had a standard deviation of 0.15 mGal. Total terrain corrections for the road stations were extremely high, some reaching 20 mGal.

Figure 10

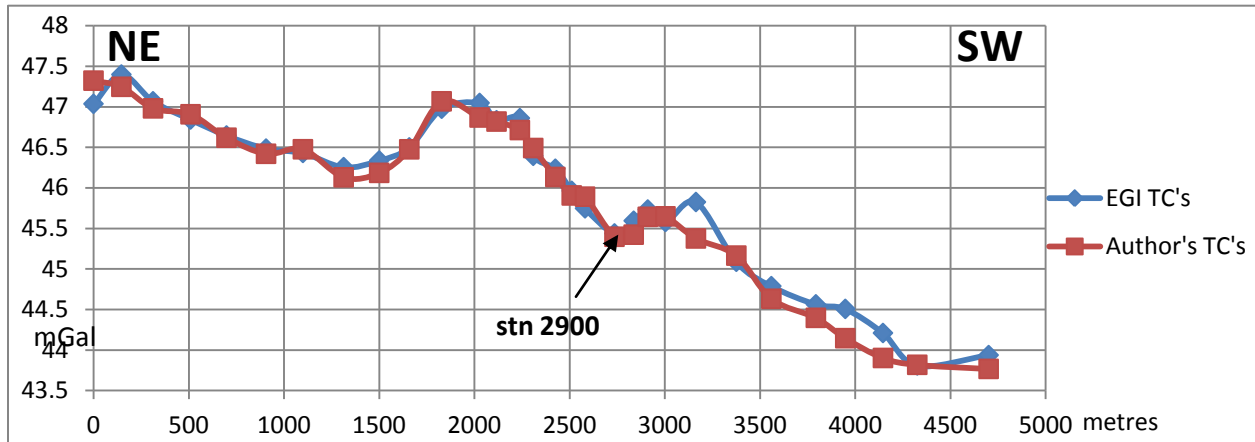


Figure 10 is an in-line profile of the Meachen Creek Bouguer Anomaly data (density= 2.70 gm/cc) using the two sources of terrain correction data. Both methods show a gravity low at station 2900, acquired at a wide landing beside the creek flowing north out of the basin of interest. Though the intent was to tie with a previous gravity station recorded here, this location was not ideal due to significant rip-rap and lower density infill that was likely required to replace washed out parts of the road here.

Both terrain correction methods indicate a ~1 mGal gravity high on the profile at 1800 metres. A Middle Aldridge gabbro sill intersects the road from 1600-1800 metres on the profile and is inferred to dip 20 degrees west-southwest. The mapped location of the Sinclair Fault intersects the profile at 2200 metres. In general, the EGI ITC's were slightly higher than the author's; a few were significantly higher.

Figure 11

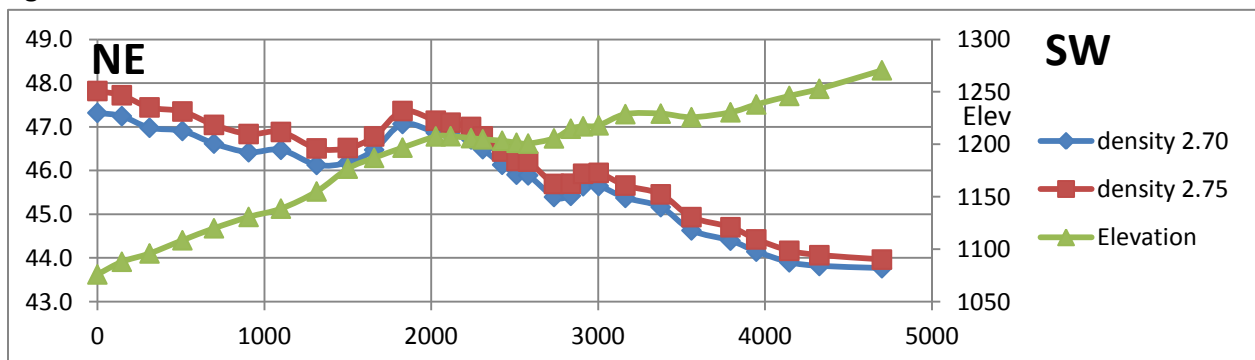
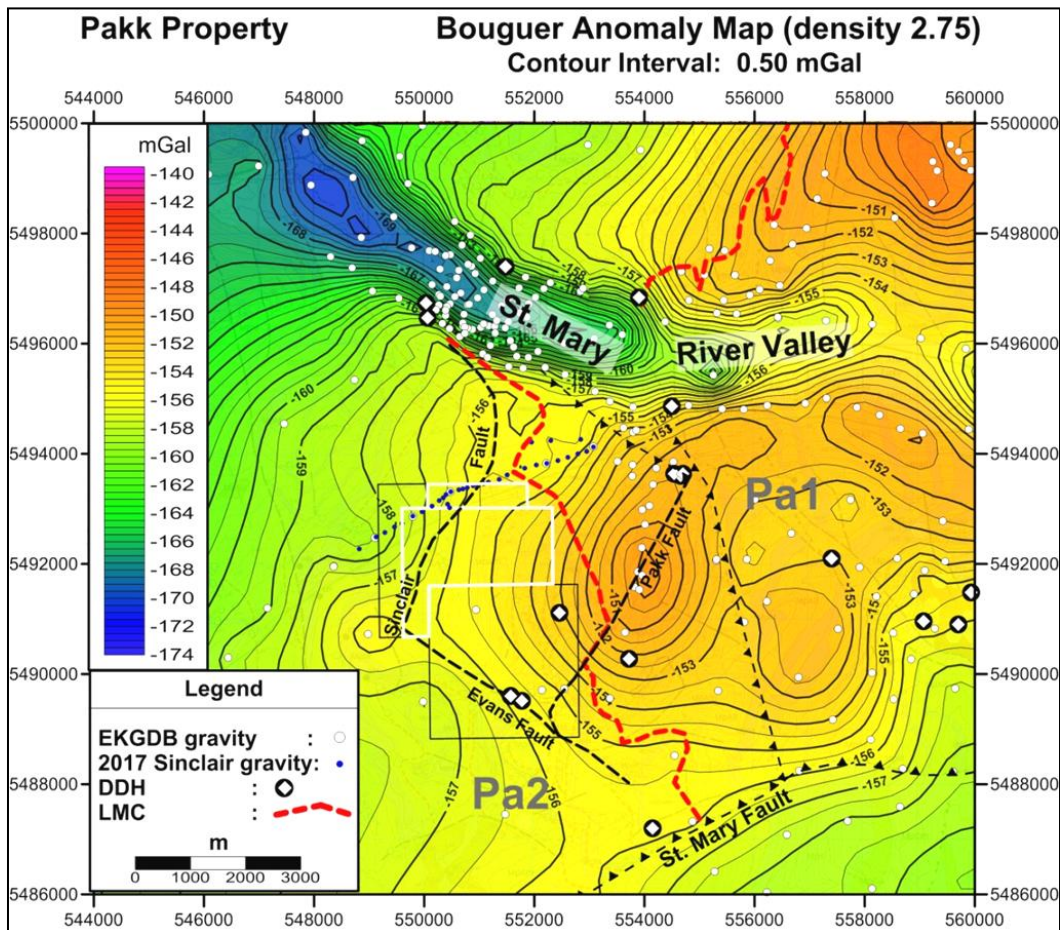


Figure 11 is a preliminary profile of the data processed at two densities using the author's terrain corrections. No significant difference is noted between the two densities for the road stations but it does affect area maps. Though the elevation profile has been vertically exaggerated, there appears to be a positive correlation between subtle changes in the topography along the road and the gravity profiles.

8.6 Gravity Data Mapping and Interpretation

A 250 metre grid of Bouguer Anomaly data (processed at density 2.75 gm/cc) was made using the EKGDB stations merged with the Sinclair 2017 gravity stations. The author's terrain corrections were used and the +200 mGal shift shown in the EGI Bouguer Anomaly listings (Appendix 1) was removed from Bouguer Anomaly calculations. Figure 12 is the Bouguer Anomaly map for the Pakk and surrounding area. A version of this gravity map using density 2.70 (not shown) was also made for comparison.

Figure 12

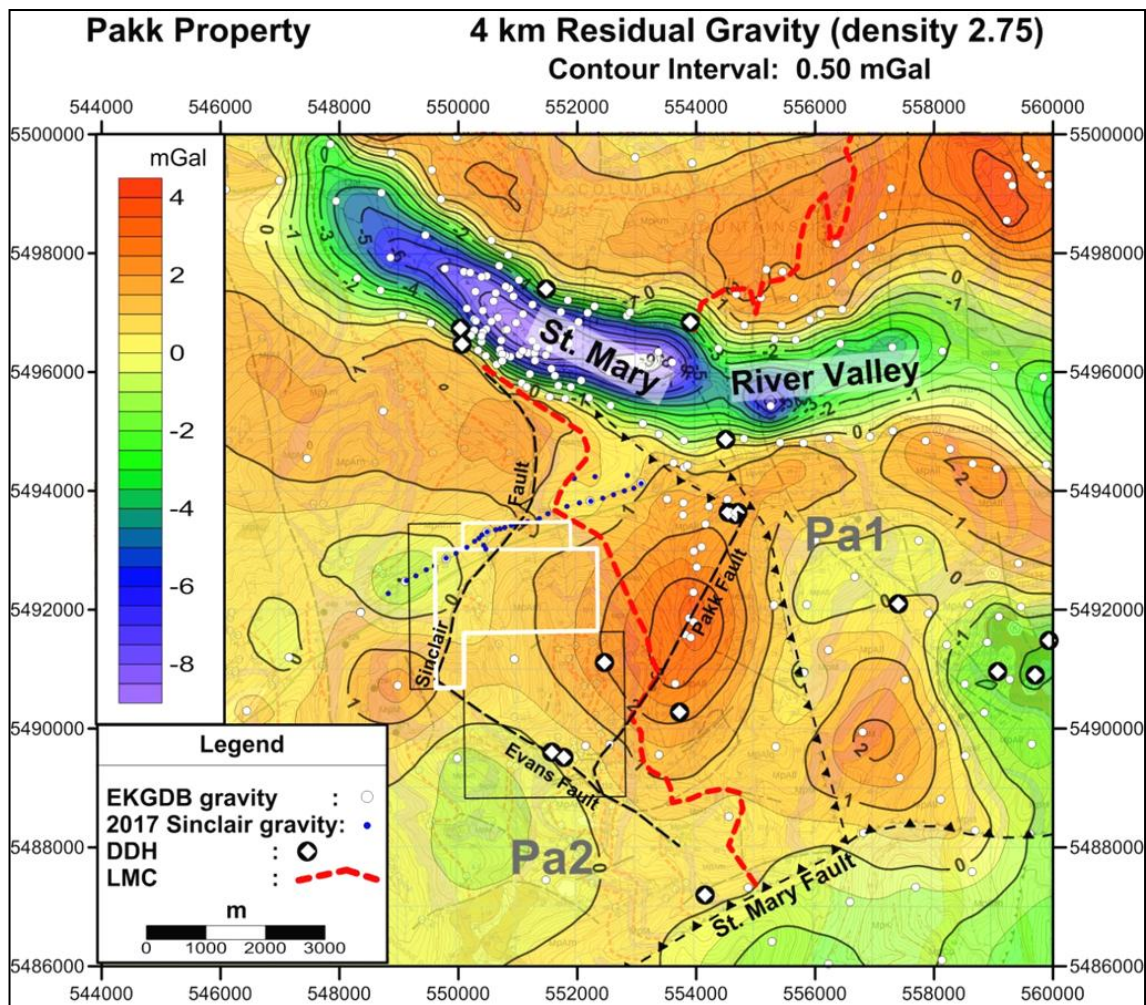


The gravity low in the St. Mary river valley is due to thick lower density alluvium and till relative to the surrounding Aldridge country rock. Gravity highs are associated with Lower Aldridge rock east of the property and north of the river valley. A >3 mGal gravity gradient, decreasing from east to west, can be seen across the mineral claims. The 2017 data tied well with existing gravity data along the road.

A 4 km circular filter³ was applied to the Bouguer Anomaly grid to separate the effects of shallow sources (ie. lower density alluvial river sediments) and deeper sources into Residual and Regional grids, respectively. Figure 13 is the 4 km Residual Gravity map overlaid on the GSC geology map.

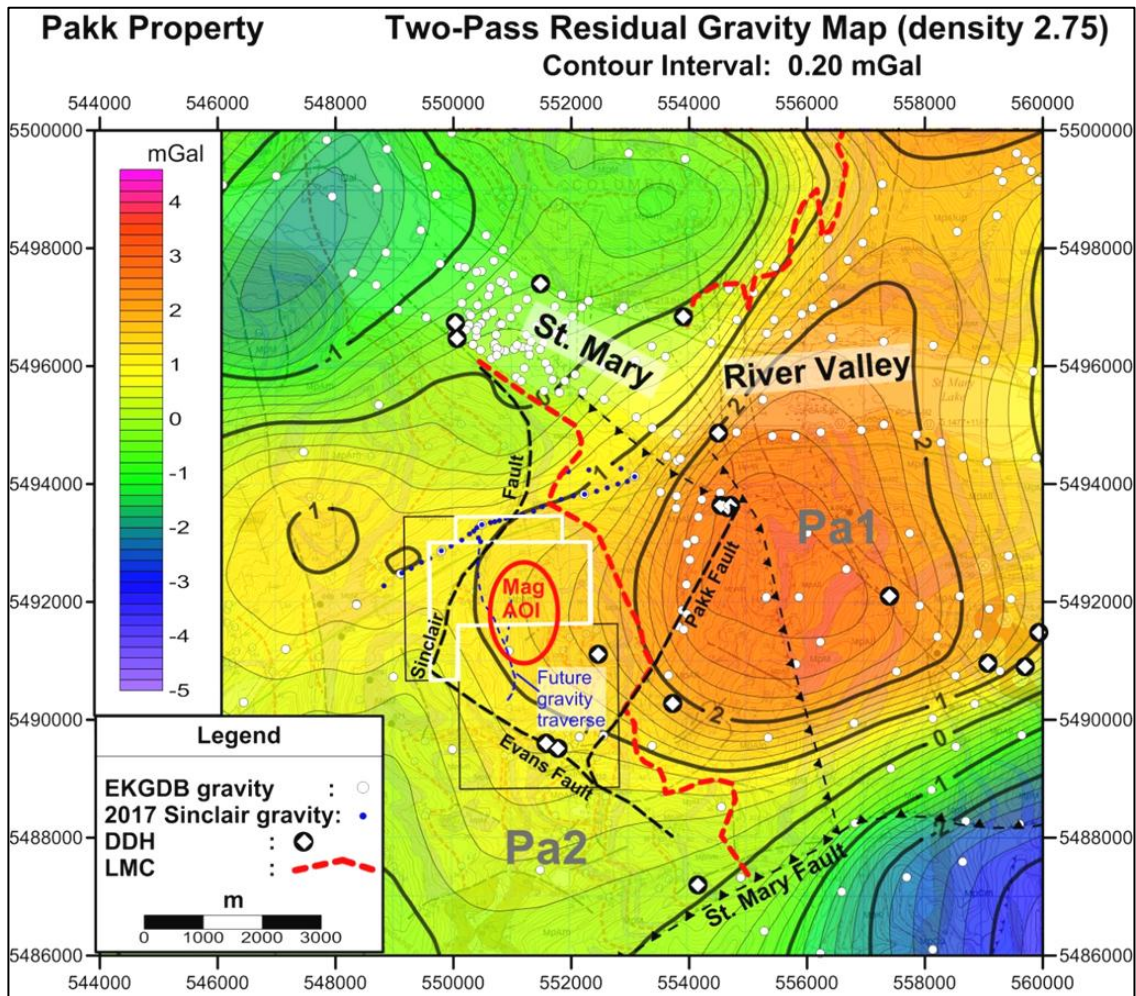
Residual Gravity highs southwest and northwest of the Sinclair claim are coincident with gabbro sills at surface. The map isolates a narrow gravity high on the road coincident with the gabbro sill outcrop just west of the LMC. The map also isolates a gravity low at the southwest end of the Meachen road survey which stopped just east of a gabbro outcrop. This anomaly may reflect a lack of gabbro identified to the east and to the west. It could also be a response to steeply dipping stratigraphy west of the Sinclair Fault.

Figure 13



The complimentary 4 km Regional Gravity grid was then filtered with a larger (10 km) circular filter producing a second Regional/Residual pair of grids. The two-pass Regional grid (not shown) contains the deep-sourced gravity gradient which decreases 13 mGal from SE to NW across this area. The complimentary two-pass Residual Gravity map (Figure 14) highlights mid-wavelength components of the data having mid-depth or large-dimensioned shallower sources. Anomalies seen on this map may have geologic and/or exploration significance.

Figure 14



Though the shallow-sourced gravity low associated with the river valley has been attenuated on Figure 14, a significant gravity low still resides at the confluence of Redding Creek and the St. Mary River in the northwest corner of the map. This anomaly may be caused by an eastern subsurface extension of the Hall Lake (Kg) Stock which outcrops 5 km further west. The GSC St. Mary geology map does show a small Kg outcrop 500 metres north of the northwest corner of this mapped area. A broad gravity high (~1.0 mGal) is seen west of the claim and is likely the response to increased high-density gabbro sills here.

There is a broad gravity high associated with Lower Aldridge (Pa1) east of the claims. Increased gabbro sills in Pa1, relative to Pa2 west of the LMC, are interpreted to be the cause of this anomaly. Within the claims, the 1 mGal contour line can be seen nosing out (to the west) further from the 2 mGal contour to the east. The amplitude difference between what is seen and where the 1 mGal would be expected (closer to the 2 contour) is approximately +0.4 mGal. The area where these contours are deflected to the west coincides with the Mag AOI inside the red ellipse. The new gravity data along the road appears to impact this perturbation of gravity contours therefore may actually be seeing a component of a gravity anomaly from a buried high density source south of the road. The blue dashed line south of the Meachen FSR indicates where future gravity stations can be acquired during a hiked traverse of the Sinclair-2 claim.

9.0 ROCK SAMPLE DESCRIPTIONS

The three rock samples deemed to have geological significance were cut and inspected by Paul Ransom (P. Geo.). Geological descriptions of these samples were as follows:

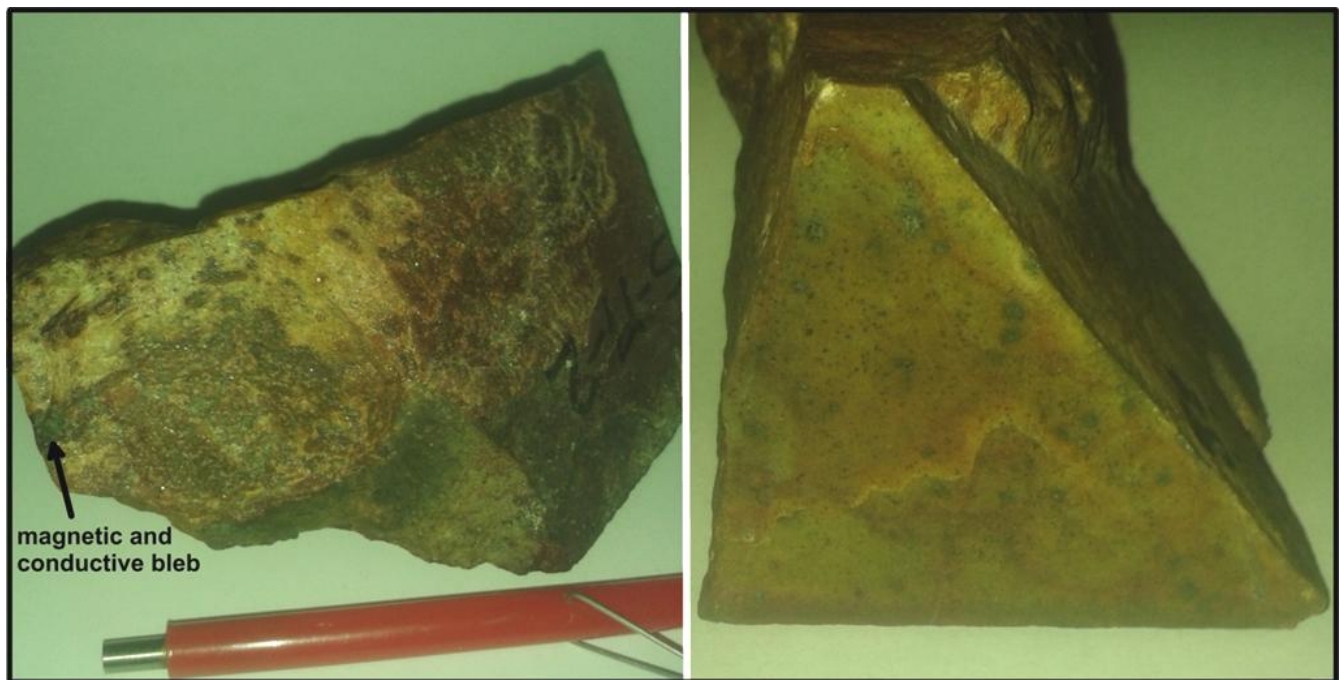
S1 – Coticule beds (UTM: 550930E, 5491700N)

Subwacke (silty argillite), somewhat weathered. Very thinly bedded (1 cm beds). With exception of 0.5 mm grains of probable white garnet that highlight half of the beds, the primary and metamorphic mica grains are <0.0625 mm. No carbonate was detected in the sample using 10% HCl.

S2 - Quartzite (UTM: 550850E, 5492040N)

Figure 15: White with considerable red to brown limonite stain, quartz arenite, grains are medium sand size and rounded and contacts are sutured. Contains 5% pyrrhotite, 3% black to brownish black biotite, and 3% muscovite. The pyrrhotite occurs as fine <0.25 mm grains to rounded masses and grain clusters 2mm to 5mm across. These larger pyrrhotite masses are commonly pitted indicating dissolution and removal of soluble components (possibly fine, non crystalline, pyrite). Mica grains are typically finer than .25 mm. No carbonate was detected in the sample using 10% HCl. Magnetic susceptibility was ~ 0.09 ($\times 10^{-3}$ SI). A Mag-pen was only attracted to one (5mm) Po bleb on sample surface. It was also conductive.

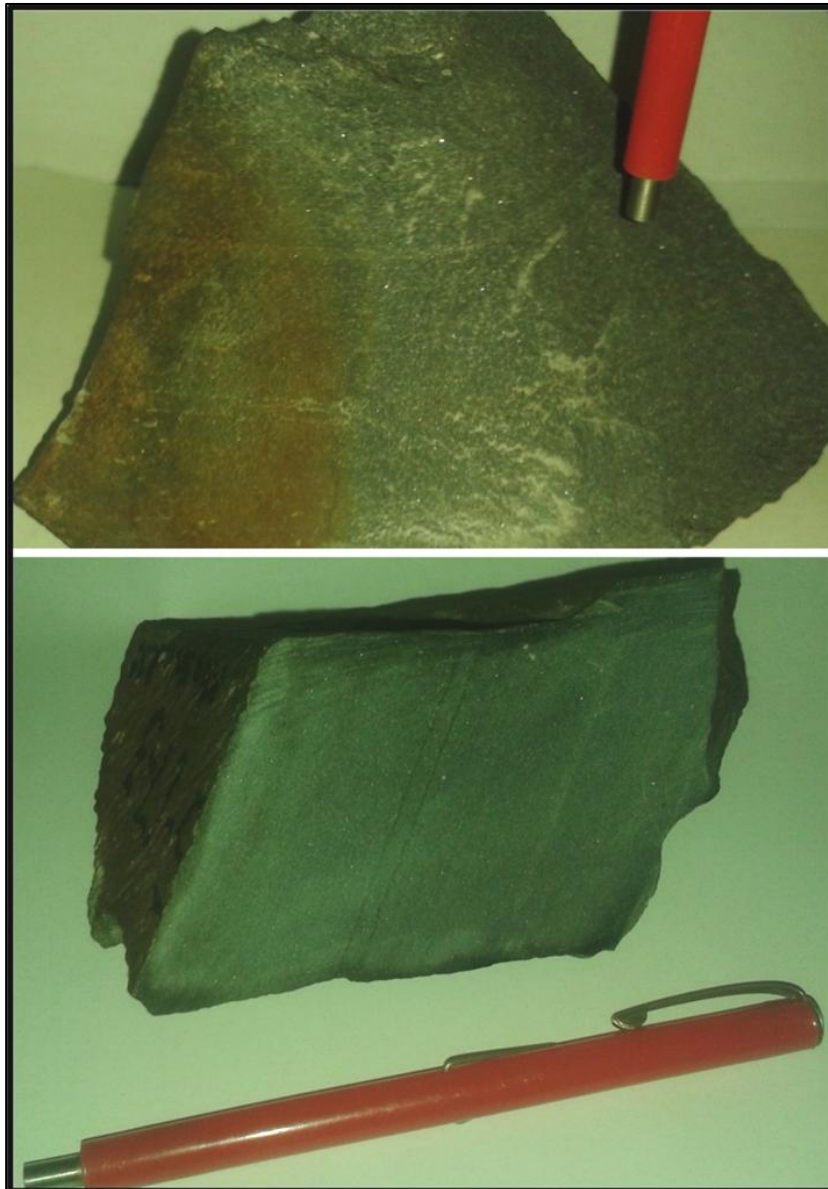
Figure 15 Quartzite – sample #2



S3 – Carbonaceous Wacke Laminate (UTM: 550830E, 5492030N)

Figure 16: Without magnification this specimen can be classified as carbonaceous wacke laminate (CWL). Primary component grains of quartz, feldspar(?), and secondary biotite and sericite are all <0.0625 mm therefore this rock falls into the siltstone size classification. Rare <1 mm layers of argillite were noted and they are tectonically dismembered. Very rare acicular grains to 5 or 10 mm long and <0.1 mm across were noted and are probably tourmaline (not particularly uncommon). Pyrrhotite constitutes 5% of the specimen and is disseminated throughout as very fine grains, mostly less than 0.1 mm long. Discontinuous lamination segments of pyrrhotite reach 3 mm long and 0.5 mm wide. No carbonate was detected in the sample using 10% HCl. Magnetic susceptibility was measured at $\sim 2.2 \times 10^{-3}$ SI. A Mag-pen was mildly attracted to the entire surface of the sample.

Figure 16 Wacke Laminate – sample #3



10.0 SUMMARY

The Sinclair claims are located 25 kilometres southwest of the Sullivan lead/zinc/silver deposit in Kimberley, British Columbia. The Sullivan Sedex deposit formed near the contact between Lower and Middle Aldridge Formation (the LMC) metasediments and this zone (Sullivan Horizon) has been a target of exploration for many years. From east to west, sediments dip southwest on the Sinclair and adjacent Pakk claims grading from Lower Aldridge to Middle Aldridge Formation. West of the LMC boundary Sullivan Horizon (LMC) resides below surface, getting increasingly deeper to the west-southwest.

On September 30, 2017, a 56 KHz EM anomaly was targeted on a hiked traverse of the claim. The high terrain of the mineral claim was assessed for suitability for future surface geophysics (ground gravity and magnetics). Five rock samples were acquired for analysis and a density study. Two of the rock samples found proximal to the EM anomaly contained approximately 5% pyrrhotite and exhibited magnetic character. Though steep in places, this area is accessible for future ground geophysical surveys.

On October 14-15, 2017, a gravity survey was acquired on the Meachen FSR to get a detailed NE-SW profile view of the gravity northwest of the AOI. The intent was to see if there is gravity gradient that correlates with the Mag gradient here, and to measure the gravity effect of a gabbro sill that intersects the road near its east end. The road survey results were better than expected and support future gravity work on the Sinclair-2 claim. The new 2017 gravity data will serve as a good baseline for future work.

The 2017 gravity data was processed and merged with the EKDGB data, gridded and mapped. Versions of Bouguer Anomaly, 4 km Residual, and two-pass Residual gravity were created at density 2.75 gm/cc for interpretive work. Two Residual gravity maps show several features of interest but more data is required before a complete interpretation can be made for the mineral claims.

11.0 RECOMMENDATIONS

Due to the inferred depth of Sullivan Horizon within the perimeter of the Sinclair-2 and adjacent Pakk claims, geophysical methods capable of detecting mineralization at depths greater than 500 metres will be required. Although several companies offer methods which purport this ability, it is not known how well these systems will work in rugged terrain.

A ground gravity survey to complete the high terrain traverse (15 stations) should suffice but heli-support for acquiring data in challenging terrain further east would also be beneficial. Modelling has shown that a deeply buried Sullivan-sized ore mass produces a gravity anomaly under 1.0 mGal. This may be difficult to delineate due to increased survey noise caused by the rugged terrain within the survey area.

The small EM anomaly scouted during the hiked traverse was only picked up on one flight line during the Aeromag survey hence the airborne EM map does not accurately delineate the anomaly. In light of the rock samples found here having elevated pyrrhotite content, the area should have a ground Mag (and possibly VLF) survey done. Due to the increased potential of locating near-surface mineralization here, this area should be given high priority for future work.

12.0 COST STATEMENT

Exploration Work type	Comment	Days			Totals
Personnel (Name)* / Position					
	Field Days	Days	Rate	Subtotal	
Sean Kennedy / Prospector / Alpine traverse	September 30, 2017	1.00	\$400.00	\$400.00	
Truck	September 30, 2017		\$150.00	\$150.00	
Ted Sanders / Claim Owner / Alpine traverse	September 30, 2017	1.00	\$300.00	\$300.00	
Car	September 30, 2017		\$50.00	\$50.00	
Excel Geophysics Inc., / Gravity Survey (35 stns)	October 14-15, 2017			\$4,042.50	
				\$4,942.50	\$4,942.50
Office Studies		List Personnel (note - Office only)			
Rock Analysis	Paul Ransom (P. Geo.)	0.50	\$800.00	\$400.00	
Supplies	"		\$50.00	\$50.00	
Rock Density Study	Ted Sanders	0.10	\$450.00	\$45.00	
Literature search	"				
-Electromagnetic data / Research		0.25	\$450.00	\$112.50	
Computer mapping	"				
-1995 GSC Aeromag TMI (RTF) Data		0.25	\$450.00	\$112.50	
-1995 GSC Aeromag / Interpretation		0.25	\$450.00	\$112.50	
-1995 GSC Aeromag - 56 KHz EM Survey		0.25	\$450.00	\$112.50	
-2017 Gravity data / Profiles (density 2.70, 2.75)		0.25	\$450.00	\$112.50	
-2017 Gravity data / EKGDB (density 2.70, 2.75)		0.75	\$450.00	\$337.50	
Processing of data	"				
-1995 GSC Aeromag Survey		0.00	\$450.00	\$0.00	
-1995 GSC Aeromag - 56 KHz EM Survey		0.00	\$450.00	\$0.00	
-2017 Gravity data / Profiles (density 2.70, 2.75)		0.25	\$450.00	\$112.50	
-2017 Gravity data / EKGDB (density 2.70, 2.75)		0.50	\$450.00	\$225.00	
Report preparation		2.50	\$450.00	\$1,125.00	
Other (specify)					
Miscellaneous					
Telephone		0.00	\$0.00	\$0.00	
Other (Specify)		0.00	\$0.00	\$0.00	
				\$2,857.50	\$2,857.50
TOTAL Expenditures					\$7,800.00

13.0 STATEMENT of QUALIFICATIONS

I, Edward (Ted) Sanders, certify that:

- 1) I am an independent prospector, presently residing in Fernie, British Columbia.
- 2) I have been actively prospecting for minerals in British Columbia for 7 years.
- 3) I was formerly employed (7 years) as a Geophysical Technician for an oil & gas company (Potential Fields Dept.), and subsequently have done Geophysical Consulting for 17 years.
- 4) I am a graduate of Waterloo University with a Bachelor's Degree (Mathematics).
- 5) I own and maintain mineral claims in British Columbia.
- 6) I am the creator the East Kootenay Digital Gravity Database (EKGDB), now property of Geoscience BC (data file #2013-23).

14.0 REFERENCES

¹ Anderson, D. 2006. *Diamond Drilling on the Pakk Property*. History of Exploration (p.2), Property Geology and Summary of Work Done (p.3), ARIS # 28424.

² Gravity Base 478 4781 - Heritage Inn, Cranbrook, **Observed Gravity = 980700.58**



Figure 2. Heritage Inn Excel Gravity Base 478 4781, Cranbrook, BC

³The grid filter used (*Excel Geophysics Inc.* proprietary software) was designed to operate on Surfer 6.0 binary grid files. The program requires an input grid filename, a filter radius, and two output grid filenames. The filter radius is measured in multiples of the grid interval used (250 metres for the gravity grid). For example, a 4 km filter has a radius of 16 (250m) grid nodes. For each grid node in the starting grid, the program uses all the values of grid nodes lying within the filter radius of the node. For the 4 km filter, this is about 800 grid node values used for each calculation of a Regional value (Area of filter = $\text{Pi} * r^2$ (16^2) = 804). The Residual value (stored in the Residual grid) is the difference between the starting value and the calculated Regional value for each grid node.

15.0 APPENDIX 1 – 2017 Gravity Survey Data - Observed Gravity (tied to CGSN)

Line Number	Station Number	Date (mm/dd/yyyy)	Time (hhmm)	GMT Shift (hrs to GMT)	Gravity Meter Number	Operator ID	Counter Reading	Instrument Height (cm)
478	4781	14/10/2017	821	-6	353	Kelly Pratt	4234.84	0
478	10141	14/10/2017	1005	-6	353	Kelly Pratt	4190.03	0
1014	101	14/10/2017	1100	-6	353	Kelly Pratt	4194.42	81
1014	200	14/10/2017	1122	-6	353	Kelly Pratt	4191.85	85
1014	400	14/10/2017	1131	-6	353	Kelly Pratt	4189.90	88
1014	600	14/10/2017	1142	-6	353	Kelly Pratt	4187.19	82
1014	800	14/10/2017	1153	-6	353	Kelly Pratt	4184.43	89
1014	1000	14/10/2017	1202	-6	353	Kelly Pratt	4181.65	88
1014	1200	14/10/2017	1212	-6	353	Kelly Pratt	4179.82	90
1014	1400	14/10/2017	1221	-6	353	Kelly Pratt	4176.30	91
1014	1600	14/10/2017	1253	-6	353	Kelly Pratt	4172.30	89
1014	1800	14/10/2017	1304	-6	353	Kelly Pratt	4170.90	81
1014	2000	14/10/2017	1315	-6	353	Kelly Pratt	4169.07	90
1014	2200	14/10/2017	1326	-6	353	Kelly Pratt	4166.92	82
1014	2300	14/10/2017	1334	-6	353	Kelly Pratt	4166.56	87
1014	2400	14/10/2017	1344	-6	353	Kelly Pratt	4166.57	87
1014	2500	14/10/2017	1352	-6	353	Kelly Pratt	4166.39	91
1014	2600	14/10/2017	1402	-6	353	Kelly Pratt	4165.88	89
1014	2700	14/10/2017	1409	-6	353	Kelly Pratt	4165.70	87
1014	2800	14/10/2017	1418	-6	353	Kelly Pratt	4165.80	84
1014	2900	14/10/2017	1430	-6	353	Kelly Pratt	4164.77	80
478	10141	14/10/2017	1509	-6	353	Kelly Pratt	4190.07	0
478	4781	14/10/2017	1636	-6	353	Kelly Pratt	4234.94	0
478	4781	15/10/2017	743	-6	353	Kelly Pratt	4234.85	0
478	10141	15/10/2017	1010	-6	353	Kelly Pratt	4189.96	0
1015	2900	15/10/2017	1034	-6	353	Kelly Pratt	4164.70	81
1015	5102	15/10/2017	1132	-6	353	Kelly Pratt	4146.54	70
1015	5103	15/10/2017	1205	-6	353	Kelly Pratt	4152.08	61
1015	3000	15/10/2017	1311	-6	353	Kelly Pratt	4163.06	86
1015	3100	15/10/2017	1320	-6	353	Kelly Pratt	4162.20	81
1015	3200	15/10/2017	1329	-6	353	Kelly Pratt	4161.10	91
1015	3400	15/10/2017	1338	-6	353	Kelly Pratt	4158.60	82
1015	3600	15/10/2017	1349	-6	353	Kelly Pratt	4157.72	80
1015	3800	15/10/2017	1356	-6	353	Kelly Pratt	4157.57	84
1015	4000	15/10/2017	1404	-6	353	Kelly Pratt	4155.69	88
1015	4200	15/10/2017	1413	-6	353	Kelly Pratt	4154.63	83
1015	4400	15/10/2017	1421	-6	353	Kelly Pratt	4152.85	84
1015	4600	15/10/2017	1434	-6	353	Kelly Pratt	4151.57	86
1015	5000	15/10/2017	1446	-6	353	Kelly Pratt	4148.80	76
1015	6000	15/10/2017	1528	-6	353	Kelly Pratt	4171.98	84
1015	6001	15/10/2017	1541	-6	353	Kelly Pratt	4178.07	80
478	10141	15/10/2017	1556	-6	353	Kelly Pratt	4190.08	0
478	4781	15/10/2017	1726	-6	353	Kelly Pratt	4234.92	0

Calibrated Reading (mGal)	Instrument Height Correction (mGal)	Tide Correction (mGal)	Adjusted Reading (mGal)	Drift Correction (mGal)	Relative Gravity (mGal)	Observed Gravity (mGal)
4508.20	0.00	0.03	4508.232	0.00	4508.23	980700.58
4460.37	0.00	0.05	4460.413	0.00	4460.42	980652.76
4465.05	0.25	0.04	4465.344	0.00	4465.35	980657.70
4462.31	0.26	0.04	4462.608	0.00	4462.61	980654.96
4460.22	0.27	0.04	4460.528	0.00	4460.53	980652.88
4457.33	0.25	0.03	4457.618	0.00	4457.62	980649.97
4454.39	0.28	0.03	4454.689	0.00	4454.69	980647.04
4451.42	0.27	0.02	4451.715	0.00	4451.72	980644.07
4449.47	0.28	0.02	4449.764	0.00	4449.77	980642.12
4445.71	0.28	0.02	4446.005	0.00	4446.01	980638.36
4441.44	0.28	0.00	4441.715	0.00	4441.72	980634.07
4439.94	0.25	0.00	4440.19	0.00	4440.19	980632.54
4437.99	0.28	-0.01	4438.259	0.00	4438.26	980630.61
4435.69	0.25	-0.01	4435.934	-0.01	4435.94	980628.29
4435.31	0.27	-0.02	4435.561	-0.01	4435.57	980627.91
4435.32	0.27	-0.02	4435.566	-0.01	4435.57	980627.92
4435.13	0.28	-0.03	4435.383	-0.01	4435.39	980627.74
4434.58	0.28	-0.03	4434.827	-0.01	4434.83	980627.18
4434.39	0.27	-0.03	4434.625	-0.01	4434.63	980626.98
4434.50	0.26	-0.04	4434.718	-0.01	4434.72	980627.07
4433.40	0.25	-0.04	4433.601	-0.01	4433.61	980625.96
4460.41	0.00	-0.06	4460.347	-0.01	4460.35	980652.70
4508.31	0.00	-0.09	4508.224	-0.01	4508.23	980700.58
4508.22	0.00	-0.02	4508.201	0.00	4508.20	980700.58
4460.29	0.00	0.04	4460.326	0.00	4460.33	980652.71
4433.32	0.25	0.04	4433.611	0.00	4433.61	980625.99
4413.94	0.22	0.04	4414.189	0.00	4414.19	980606.57
4419.85	0.19	0.03	4420.07	0.00	4420.07	980612.45
4431.57	0.27	0.01	4431.846	0.00	4431.85	980624.23
4430.66	0.25	0.00	4430.909	0.00	4430.91	980623.29
4429.48	0.28	0.00	4429.756	0.00	4429.76	980622.14
4426.81	0.25	0.00	4427.055	0.00	4427.06	980619.44
4425.87	0.25	-0.01	4426.109	0.00	4426.11	980618.49
4425.71	0.26	-0.01	4425.958	0.00	4425.96	980618.34
4423.71	0.27	-0.02	4423.96	0.00	4423.96	980616.34
4422.57	0.26	-0.02	4422.808	0.00	4422.81	980615.19
4420.67	0.26	-0.03	4420.907	0.00	4420.91	980613.29
4419.31	0.27	-0.03	4419.54	0.00	4419.54	980611.92
4416.35	0.24	-0.04	4416.546	0.00	4416.55	980608.93
4441.10	0.26	-0.06	4441.297	0.00	4441.30	980633.68
4447.60	0.25	-0.06	4447.781	0.00	4447.78	980640.16
4460.42	0.00	-0.07	4460.35	0.00	4460.35	980652.73
4508.29	0.00	-0.09	4508.199	0.00	4508.20	980700.58

2017 Gravity Survey Data - Bouguer Gravity (Density = 2.67 gm/cc)

Line Number	Station Number	Latitude (N)	Longitude (W)	UTMx	UTMy	Elevation (metres) (above sea level)	Observed Gravity (mGal)
		WGS 84 (decimal degrees)		UTM Zone 11 NAD 83 (metres)			
478	10141	49.59863	-116.26877	552839.89	5494263.20	1105.65	980652.71
1014	101	49.59737	-116.26555	553073.76	5494125.09	1076.00	980657.70
1014	200	49.59663	-116.26723	552953.67	5494041.15	1088.08	980654.96
1014	400	49.59624	-116.26945	552793.54	5493997.12	1096.01	980652.88
1014	600	49.59568	-116.27203	552607.45	5493932.18	1108.58	980649.97
1014	800	49.59522	-116.27455	552425.74	5493880.09	1120.02	980647.04
1014	1000	49.59475	-116.27733	552225.33	5493825.51	1130.83	980644.07
1014	1200	49.59451	-116.27998	552033.98	5493796.96	1138.74	980642.12
1014	1400	49.59401	-116.28284	551827.96	5493738.88	1155.09	980638.36
1014	1600	49.59328	-116.28517	551660.27	5493656.66	1176.86	980634.07
1014	1800	49.59295	-116.28730	551507.09	5493618.33	1187.13	980632.54
1014	2000	49.59223	-116.28937	551357.96	5493536.55	1196.89	980630.61
1014	2200	49.59178	-116.29204	551165.40	5493485.37	1207.59	980628.29
1014	2300	49.59155	-116.29322	551080.51	5493458.62	1207.79	980627.91
1014	2400	49.59131	-116.29487	550961.25	5493430.80	1205.94	980627.92
1014	2500	49.59118	-116.29583	550892.59	5493416.31	1204.80	980627.74
1014	2600	49.59089	-116.29737	550781.48	5493382.34	1203.43	980627.18
1014	2700	49.59068	-116.29852	550698.63	5493358.81	1201.54	980626.98
1014	2800	49.59057	-116.29947	550630.20	5493345.54	1200.74	980627.07
1014	2900	49.59026	-116.30155	550479.56	5493309.76	1205.69	980625.96
1015	3000	49.58981	-116.30276	550392.63	5493258.58	1214.91	980624.23
1015	3100	49.58930	-116.30342	550345.38	5493201.71	1217.19	980623.29
1015	3200	49.58882	-116.30448	550269.83	5493147.53	1218.15	980622.14
1015	3400	49.58796	-116.30626	550142.07	5493051.19	1228.83	980619.44
1015	3600	49.58704	-116.30882	549957.59	5492946.54	1229.31	980618.49
1015	3800	49.58632	-116.31112	549792.47	5492865.54	1225.90	980618.34
1015	4000	49.58515	-116.31380	549599.39	5492733.61	1230.56	980616.34
1015	4200	49.58462	-116.31578	549456.80	5492673.85	1238.08	980615.19
1015	4400	49.58373	-116.31815	549286.82	5492572.59	1246.16	980613.29
1015	4600	49.58298	-116.32036	549127.54	5492488.50	1252.96	980611.92
1015	5000	49.58105	-116.32461	548822.74	5492270.20	1270.62	980608.93
1015	5102	49.58763	-116.30183	550462.36	5493017.32	1322.66	980606.57
1015	5103	49.58827	-116.30233	550425.47	5493088.15	1288.90	980612.45
1015	6000	49.59823	-116.28113	551947.07	5494209.97	1208.84	980633.68
1015	6001	49.59850	-116.27632	552294.77	5494243.17	1177.42	980640.16

Station Number	Corrections					Bouguer Anomaly Constant Density (+200 mGal) $\rho = 2.67 \text{ g/cm}^3$ (mGal)
	Latitude	Free Air	Bouguer $\rho = 2.67 \text{ g/cm}^3$	Inner Terrain $\rho = 2.67 \text{ g/cm}^3$ (2m - 50m)	Outer Terrain $\rho = 2.67 \text{ g/cm}^3$ (50m - 30km)	
	(mGal)					
10141	981034.51	341.21	-123.79	0.00	11.81	47.42
101	981034.40	332.05	-120.47	0.10	13.26	48.24
200	981034.33	335.78	-121.82	0.36	13.67	48.61
400	981034.30	338.23	-122.71	0.26	13.93	48.29
600	981034.25	342.11	-124.12	0.18	14.18	48.08
800	981034.21	345.64	-125.40	0.24	14.58	47.89
1000	981034.16	348.97	-126.61	0.30	15.17	47.73
1200	981034.14	351.41	-127.49	0.25	15.54	47.68
1400	981034.10	356.46	-129.33	0.34	15.79	47.53
1600	981034.03	363.18	-131.76	0.29	15.89	47.64
1800	981034.00	366.35	-132.91	0.23	15.61	47.81
2000	981033.94	369.36	-134.01	0.18	16.09	48.30
2200	981033.90	372.66	-135.20	0.41	16.12	48.38
2300	981033.88	372.72	-135.22	0.31	16.32	48.16
2400	981033.86	372.15	-135.02	0.28	16.71	48.18
2500	981033.85	371.80	-134.89	0.21	16.71	47.72
2600	981033.82	371.38	-134.74	0.23	17.32	47.55
2700	981033.80	370.80	-134.53	0.33	17.49	47.27
2800	981033.79	370.55	-134.44	0.27	17.40	47.06
2900	981033.76	372.08	-134.99	0.17	17.31	46.76
3000	981033.72	374.92	-136.02	0.15	17.37	46.93
3100	981033.68	375.63	-136.28	0.21	17.89	47.06
3200	981033.63	375.92	-136.38	0.49	18.37	46.90
3400	981033.56	379.22	-137.58	0.57	19.07	47.15
3600	981033.47	379.36	-137.63	0.54	19.12	46.41
3800	981033.41	378.31	-137.25	0.21	19.91	46.10
4000	981033.31	379.75	-137.77	0.38	20.49	45.88
4200	981033.26	382.07	-138.62	0.38	20.07	45.83
4400	981033.18	384.57	-139.52	0.46	19.94	45.55
4600	981033.11	386.66	-140.28	0.37	19.61	45.16
5000	981032.94	392.11	-142.26	0.41	19.06	45.32
5102	981033.53	408.17	-148.09	0.35	14.73	48.20
5103	981033.58	397.75	-144.31	0.39	15.35	48.05
6000	981034.48	373.05	-135.34	0.16	11.08	48.15
6001	981034.50	363.35	-131.82	0.08	11.01	48.28

Appendix 2 - Inner and Outer Terrain Corrections (two sources)

Station	Excel Geophysics Inc			Ted Sanders Consulting		
	ITC(2.67)	OTC(2.67)	Total	ITC(2.67)	OTC(2.67)	Total
10141	0.00	11.81	11.81	0.00	12.04	12.04
101	0.10	13.26	13.36	0.03	13.61	13.64
200	0.36	13.67	14.02	0.13	13.74	13.87
400	0.26	13.93	14.19	0.15	13.95	14.10
600	0.18	14.18	14.36	0.14	14.29	14.42
800	0.24	14.58	14.81	0.12	14.67	14.79
1000	0.30	15.17	15.46	0.10	15.30	15.40
1200	0.25	15.54	15.79	0.12	15.72	15.84
1400	0.34	15.79	16.13	0.16	15.85	16.01
1600	0.29	15.89	16.18	0.15	15.88	16.03
1800	0.23	15.61	15.84	0.14	15.67	15.81
2000	0.18	16.09	16.27	0.10	16.26	16.36
2200	0.41	16.12	16.53	0.15	16.20	16.35
2300	0.31	16.32	16.63	0.15	16.46	16.61
2400	0.28	16.71	16.99	0.09	16.75	16.84
2500	0.21	16.71	16.92	0.09	16.92	17.01
2600	0.23	17.32	17.55	0.10	17.34	17.45
2700	0.33	17.49	17.82	0.15	17.62	17.77
2800	0.27	17.40	17.66	0.16	17.64	17.81
2900	0.17	17.31	17.48	0.05	17.39	17.44
3000	0.15	17.37	17.52	0.09	17.26	17.35
3100	0.21	17.89	18.10	0.19	17.82	18.01
3200	0.49	18.37	18.86	0.45	18.48	18.93
3400	0.57	19.07	19.64	0.31	18.88	19.19
3600	0.54	19.12	19.67	0.41	19.34	19.74
3800	0.21	19.91	20.11	0.11	19.85	19.96
4000	0.38	20.49	20.86	0.28	20.42	20.70
4200	0.38	20.07	20.45	0.20	19.89	20.09
4400	0.46	19.94	20.39	0.16	19.93	20.09
4600	0.37	19.61	19.97	0.29	19.69	19.98
5000	0.41	19.06	19.47	0.27	19.03	19.31
5102	0.35	14.73	15.07	0.24	14.44	14.68
5103	0.39	15.35	15.74	0.14	15.18	15.32
6000	0.16	11.08	11.24	0.07	10.91	10.98
6001	0.08	11.01	11.09	0.01	11.03	11.04

Appendix 3 – Invoice for Gravity Survey

***EXCEL
GEOPHYSICS INC.***

BOX 5056, 302 Centre Street S.
HIGH RIVER, ALBERTA T1V 1M3

OFFICE: (403) 652-1068
FAX: (403) 652-1085

INVOICE

NUMBER EGI 1661
October 18, 2017
Excel Project #478

BILL TO: Ted Sanders
Box 154
Fernie, BC V0B 1M0

RE: **Gravity Survey, Sinclair BC**

FEE FOR SERVICES
As per agreement of October 11, 2017

Acquisition of Gravity Data – Sinclair Claims 35 Gravity Stations @ \$110.00 per station	\$ 3,850.00
GST on services R125000398 at 5%	\$ 192.50
TOTAL INVOICE	\$ 4,042.50