



ASSESSMENT REPORT TITLE PAGE AND SUMMARY

TITLE OF REPORT: **Geological & Geochemical Work on the Black Bear East Project, Cariboo Mining Division, British Columbia**

TOTAL COST: **\$24,635.00**

AUTHOR(S): **Rein Turna**

SIGNATURE(S): **"SIGNED"**

NOTICE OF WORK PERMIT NUMBER(S)/DATE(S):

STATEMENT OF WORK EVENT NUMBER(S)/DATE(S): **5680374 (October 20, 2017 to December 31, 2017)**

YEAR OF WORK: **2017**

PROPERTY NAME: **Black Bear East Property**

CLAIM NAME(S) (on which work was done)

BBE 2 (tenure # 1055646) & BBE 3 (tenure # 1055647)

COMMODITIES SOUGHT: **Copper, Lead, Zinc, Silver & Gold**

MINERAL INVENTORY MINFILE NUMBER(S), IF KNOWN: **N/K**

MINING DIVISION: **Cariboo**

LATITUDE **52.65°**

LONGITUDE **121.3°**

UTM Zone **10** EASTING **613500** NORTHING **5832000**

OWNER(S): **Barker Minerals Ltd.**

MAILING ADDRESS: **8384 Toombs Drive, Prince George BC, V2K 5A3**

OPERATOR(S) [who paid for the work]: **Barker Minerals Ltd.**

MAILING ADDRESS: **8384 Toombs Drive, Prince George BC, V2K 5A3**

REPORT KEYWORDS (lithology, age, stratigraphy, structure, alteration, mineralization, size and attitude **do not use abbreviations or codes**)

Barkerville Terrane, Silver & Gold

REFERENCES TO PREVIOUS ASSESSMENT WORK AND ASSESSMENT REPORT NUMBERS

9669, 9677, 10252, 10264, 11620, 13154, 15420, 15804, 17696, 19354, 21930, 22599, 22642, 24662, 25752, 26003, 26504, 26805, 27125, 27655, 28248, 28978, 29740, 30764.

TYPE OF WORK IN THIS REPORT	EXTENT OF WORK (in metric units)	ON WHICH CLAIMS	PROJECT COSTS APPORTIONED (incl. support)
GEOLOGICAL (scale, area)			
Ground, mapping	N/A		
Photo interpretation	N/A		
GEOPHYSICAL (line-kilometres)			
Ground	N/A		
Magnetic	N/A		
Electromagnetic	N/A		
Induced Polarization	N/A		
Radiometric	N/A		
Seismic	N/A		
Other	N/A		
Airborne	N/A		
GEOCHEMICAL (number of samples analysed for ...)			
Soil	N/A		
Silt	N/A		
Rock	216	1055646 1055647	\$14,162.98
Other	N/A		
DRILLING (total metres, number of holes, size, storage location)			
Core	N/A		
Non-core	N/A		
RELATED TECHNICAL			
Sampling / Assaying	216	1055646 1055647	\$10,472.02
Petrographic	N/A		
Mineralographic	N/A		
Metallurgic	N/A		
PROSPECTING (scale/area)	N/A		
PREPATORY / PHYSICAL			
Line/grid (km)	N/A		
Topo/Photogrammetric (scale, area)	N/A		
Legal Surveys (scale, area)	N/A		
Road, local access (km)/trail	N/A		
Trench (number/metres)	N/A		
Underground development (metres)	N/A		
Other	N/A		
		TOTAL COST	\$24,635.00

**GEOLOGICAL - GEOCHEMICAL
ASSESSMENT REPORT**

on the

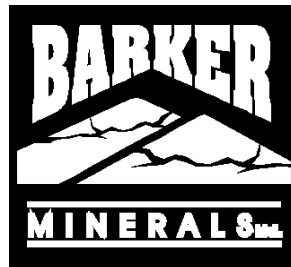
Black Bear East Property

Cariboo Mining Division, British Columbia

The geographic coordinates of the Black Bear East property are:
52.6° North Latitude and 121.3° West Longitude or
613500 E and 5832000 N UTM coordinates (NAD 83).

The relevant map is:
N.T.S. Map No. 93A/11

Work was concentrated in the area of tenure nos. 1055646 and 1055647.



for

Barker Minerals Ltd.
8384 Toombs Drive
Prince George, B.C.
V2K 5A3

Prepared by:
Rein Turna

July 16, 2018

1.0 SUMMARY

Work performed on Barker Minerals Ltd.'s Black Bear East property consisted of rock sampling. 216 geochemical analyses were made of rocks collected in this program. This report describes the work done. Detailed maps and geochemical data are presented in Appendix G.

TABLE OF CONTENTS

	Page
1.0 SUMMARY _____	i
2.0 INTRODUCTION _____	1
3.0 PROPERTY DESCRIPTION and LOCATION _____	1
4.0 MINERAL CLAIMS _____	3
5.0 PHYSIOGRAPHY and ACCESSIBILITY _____	3
6.0 HISTORY _____	5
6.1 History of Work Done on the Black Bear East Property _____	5
6.1.1 Work done in 1926-51 _____	5
6.1.2 Work done in 1951-68 _____	5
6.1.3 Work done in 2010 _____	5
6.1.4 Work done in 2012 _____	6
6.1.5 Work done in 2013 _____	6
6.1.6 Work done in 2015-2016 _____	6
6.1.7 Work done in 2016 _____	6
6.1.8 Work done in 2017 _____	6
7.0 GEOLOGY _____	7
7.1 Regional Geology _____	7
Quesnel Terrane _____	10
Slide Mountain Terrane _____	11
Barkerville Terrane _____	11
Cariboo Terrane _____	12
Glaciation and Glacial Deposits _____	12
7.2 Local Geology at Black Bear East Area _____	13
8.0 EXPLORATION PROGRAM - 2017 _____	13
8.1 Sampling Method and Approach _____	13
8.2 Economic Targets and Work Done _____	14
9.0 CONCLUSIONS _____	15
10.0 RECOMMENDATIONS _____	15

LIST of FIGURES

	Page
Figure No. 1 Black Bear East Property location in British Columbia _____	2
Figure No. 2 Barker Minerals Ltd. Mineral Claims _____	after pg. 2
Figure No. 3 Access Roads from Likely to several of Barker Minerals' properties _____	4
Figure No. 4 Terrane Map of Southern British Columbia _____	7
Figure No. 5 Terrane Map of Cariboo Lake – Wells Area _____	8
Figure No. 6 Geology of Wells-Cariboo Lake area _____	9
Figure No. 7 Schematic Regional Structural Section _____	10
Figure No. 8 Keymap of Black Bear East Areas A, B _____	in Appendix G
Figure No. 9 Black Bear East Area A, Rock Sample Nos. and Pb,As,Zn,Cu & Ag Geochem _____	in Appendix G
Figure No. 10 Black Bear East Area B, Rock Sample Nos. and Pb,As,Zn,Cu & Ag Geochem _____	in Appendix G

LIST of TABLES

	Page
Table No. 1 Barker Minerals Ltd. Mineral Claims Details _____	3
Table No. 2 Sample Coordinates and Descriptions _____	in Appendix F
Table No. 3 Area A, XRF Sampling Results _____	after Fig. No. 9
Table No. 4 Area B, XRF Sampling Results _____	after Fig. No. 10

LIST of APPENDIXES

Appendix A	Glossary of Technical Terms and Abbreviations
Appendix B	Analytical Methods
Appendix C	References
Appendix D	Statements of Author's Qualifications
Appendix E	Statement of Expenditures
Appendix F	Samples Descriptions and Coordinates
Appendix G	Black Bear East Property Maps and XRF Data Tables

2.0 INTRODUCTION

This report describes assessment work performed during 2017 on Barker Minerals Ltd.'s Black Bear East property. The work was concentrated in the areas of tenure nos.1055646 and 1055647. Rock samples were analyzed by X-ray fluorescence (XRF) twenty-eight elements. The purpose was to add geochemical information to the existing database, and to identify potential mineralized lithologic horizons in an on-going mineral exploration program.

Definitions of technical terms used in this report are provided in Appendix A, Glossary of Technical Terms and Abbreviations. Chemical abbreviations are used for the elements discussed. The elements and abbreviations are:

Ag	Silver	Cd	Cadmium	K	Potassium
As	Arsenic	Co	Cobalt	Pb	Lead
Au	Gold	Cr	Chromium	Sb	Antimony
Ba	Barium	Cu	Copper	Sn	Tin
Bi	Bismuth	Fe	Iron	Zn	Zinc

3.0 PROPERTY DESCRIPTION and LOCATION

The Black Bear East property consists of contiguous claims listed in Table No. 1 – Barker Minerals Ltd. Mineral Claims Details. The property's location in British Columbia is indicated in Figure No. 1 – Black Bear East Property Location in British Columbia, and the mineral claims are outlined in Figure No. 2 – Barker Minerals Ltd. Mineral Claims. The mineral claims comprising the property are located generally in the area between Quesnel and Cariboo Lakes of the Cariboo Mining Division in British Columbia and are 100% owned by Barker Minerals Ltd. of Prince George, B.C. The property is approximately 15 km northeast of the settlement of Likely and 75 km northeast the City of Williams Lake. The City of Prince George is 175 km to the north.

The geographic coordinates of the Black Bear East property are:
52.6° North Latitude and 121.3° West Longitude or
613500 E and 5832000 N UTM coordinates (NAD 83).

The relevant map is:
N.T.S. Map No. 93A/11.

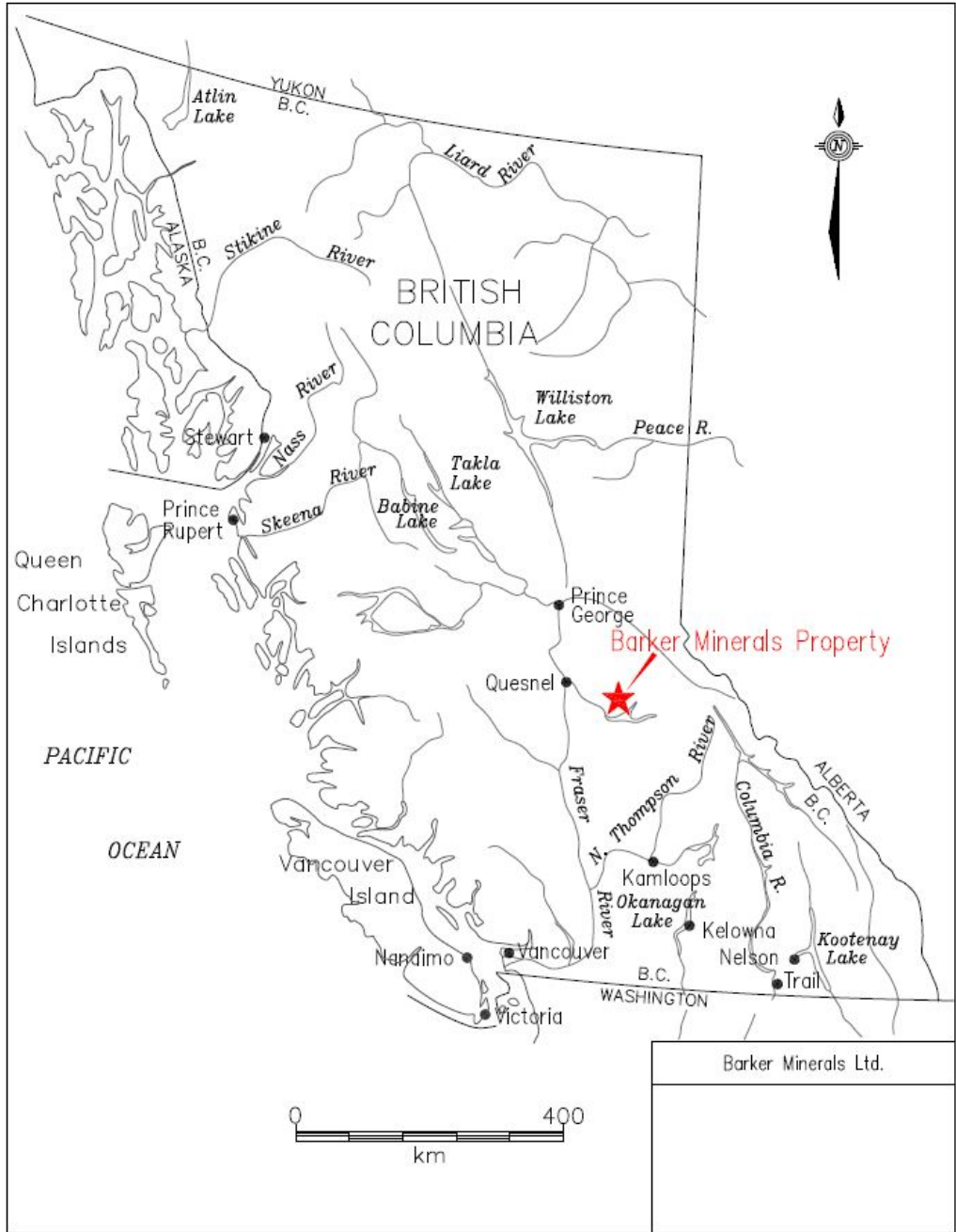


Figure No. 1 Barker Minerals Ltd. Black Bear East Property Location in British Columbia.

Figure No. 2, next page, illustrates the configuration of Barker Minerals' Cariboo Lake Property claims containing the Black Bear East work area.

Figure No. 2
Barker Minerals Ltd. Mineral Claims
Cariboo Mining Division



Black Bear East property: work done on tenures 1055646 and 1055647.

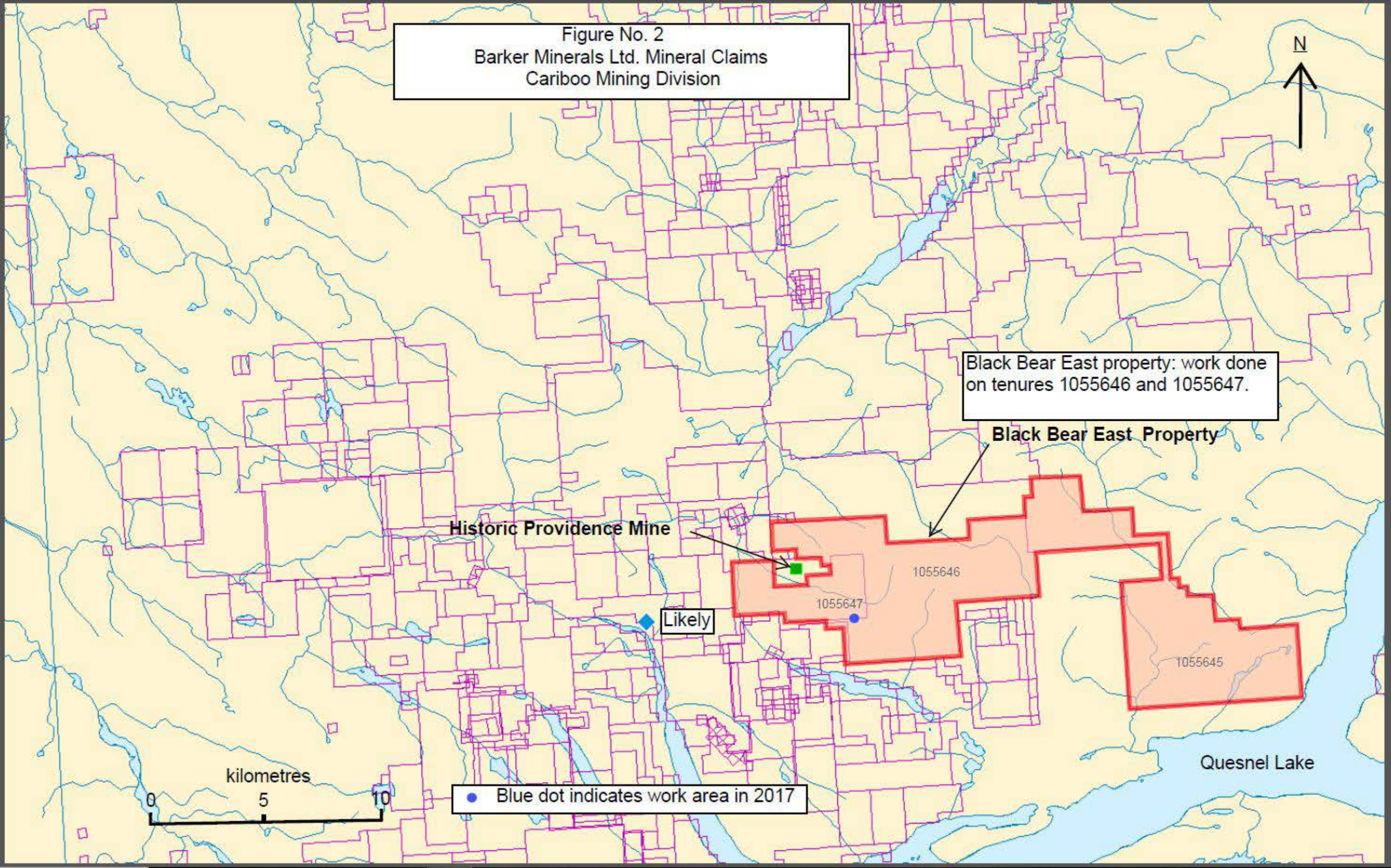
Black Bear East Property

Historic Providence Mine

Likely



Blue dot indicates work area in 2017



4.0 MINERAL CLAIMS

Details about the mineral claims are provided in Table No. 1, below

Tenure Number	Owner	Status	Area (ha)
1055645	Barker Minerals Ltd. 100%	GOOD	6205.13
1055646	Barker Minerals Ltd. 100%	GOOD	5749.70
1055647	Barker Minerals Ltd. 100%	GOOD	1727.00

Total area: 13,681.83 ha

Table No. 1 – Barker Minerals Ltd. Mineral Claim Details

5.0 PHYSIOGRAPHY and ACCESSIBILITY

The following description in *italics*, is after McKinley, 2004:

The property is situated in the central part of the Quesnel Highland between the eastern edge of the Interior Plateau and the western foothills of the Columbia Mountains. This area contains rounded mountains that are transitional between the rolling plateaus to the west and the rugged Cariboo Mountains to the east. Pleistocene and Recent ice sheets flowed away from the high mountains to the east over these plateaus and down to the southwest (Cariboo River), west (Little River) and northeast (Quesnel Lake), carving U-shaped valleys. The elevation ranges from 700-1650 m.

Precipitation in the region is heavy, as rain in the summer and snow in the winter. Drainage is to the west via the Cariboo, Little and Quesnel Rivers to the Fraser River. Quesnel Lake, the main scenic and topographic feature in the region, is a deep, long, forked, glacier-carved lake with an outlet at 725 m elevation. Vegetation is old-growth spruce, fir, pine, hemlock and cedar forest in all but the alpine regions of the higher mountains (mainly above 1400 m elevation).

Access to the Black Bear East property is via gravel logging roads bearing northeast from Likely. Figure No. 4 shows access roads from Likely to Barker's mineral properties.

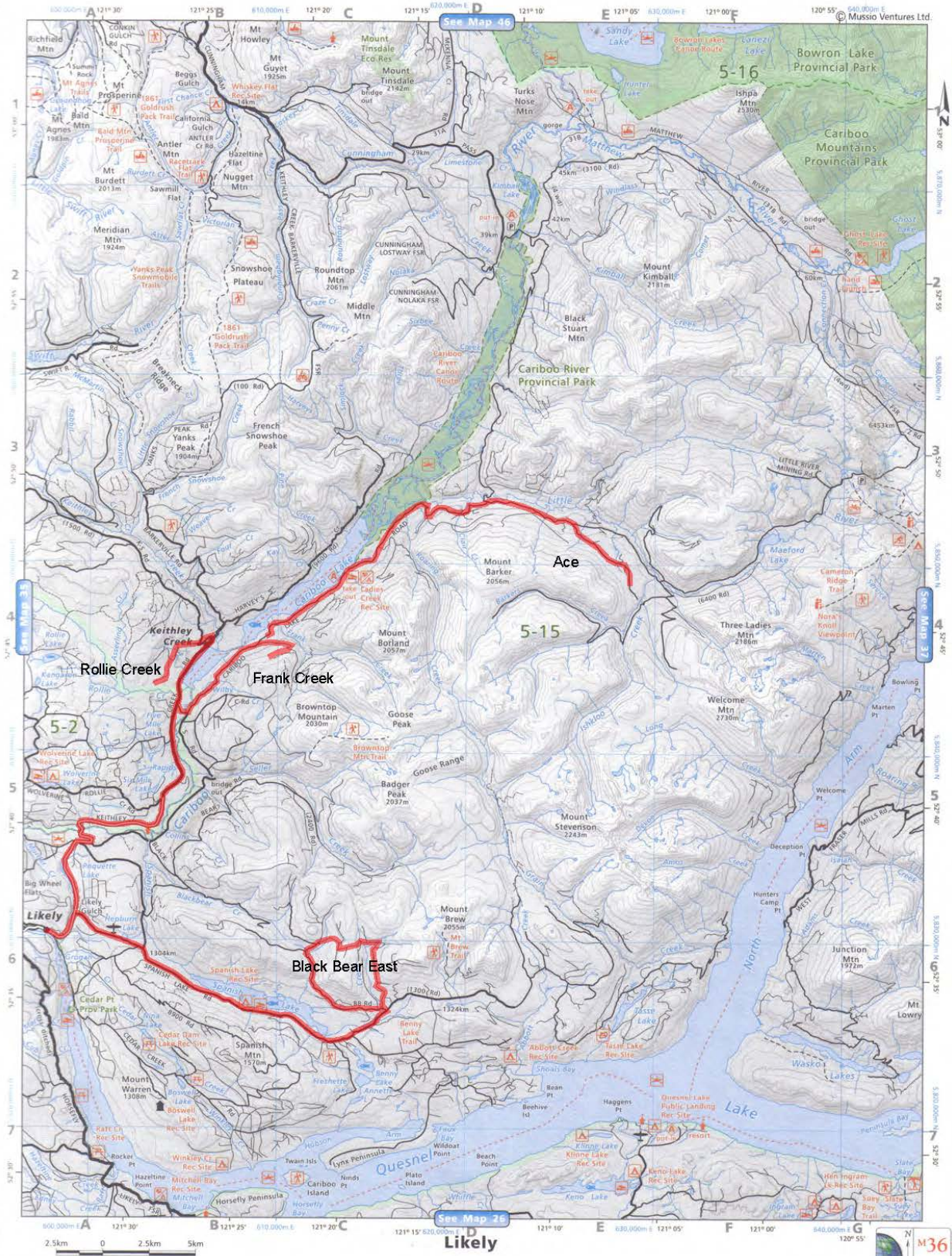


Figure No. 3 Access roads from Likely to several of Barker Minerals' properties.

6.0 HISTORY

6.1 History of Work Done on the Black Bear Property

The Black Bear property has an extensive work history. A detailed description is provided in assessment reports by Turna, R., and Doyle, L.E.

Some of the information below is from the Energy, Mines & Petroleum Resources (EMPR) Annual Reports for 1902, 1926, 1947, 1948, 1949 and Exploration in BC for 1976, 1977, 1980.

Placer mining for gold was conducted on Black Bear Creek in the early 1900's and earlier.

6.1.1 Work Done in 1926-1951

The Annual Report for 1926 for the Black Bear 1-4 claims states that 'many quartz showings', some of 'impressive size' were being handpicked of galena for the silver content. A quartz vein 'at least 50 feet wide' was identified at a falls in Black Bear Creek; from it a picked grab sample assayed 0.02 oz/T Au, 43 oz/T Ag, 40% Pb. Another wide vein was exposed in an open cut at 3,300 foot elevation on the north side of Black Bear Creek about 2 miles up from the mouth. 10 to 15 tons of ore were taken from here in 1926; a picked grab sample assayed 0.06 oz/T Au, 144 oz/T Ag, 76% Pb. Two adits were begun in 1926; by 1947 they totaled 190 feet of crosscuts and drifts exploring 3 vein structures; the property name was Providence by this time. In 1948 5 tons of ore sent to the Trail smelter yielded 319 oz. Ag, 3,294 lb. Pb, 12 lb. Zn. Exploration in 1976 to 1980 by successive owners included 200 soil samples, 5 diamond drill holes (355m) mainly targeting 3 quartz veins, and geological mapping.

6.1.2 Work Done in 1951-1968

R.B. Stokes (1972) states that in 1951 7 tons of handpicked ore from the main vein yielded 1 oz. Au, 683 oz. Ag, 6,401 lb. Pb and 15 lb. Zn. In 1967-68 Plutus Mines Ltd. drove 825 feet of tunnels to explore the 3 main Ag-Pb-bearing quartz veins. Stokes states that 11 underground diamond drill holes (2,217 feet) were done in 1968 but no record of this was found in the Minister of Mines Annual Reports or Assessment Reports.

Historical work programs done on areas presently covered by Barker Minerals' Black Bear property in 2010-2013 are briefly described below.

6.1.3 Work done 2010

The relevant report is Assessment Report 32209 by Doyle, L.E.

Twelve trenches (2,000 m) were excavated on the Black Bear Property. Quartz veins within alteration zones were discovered which had pockets of argentiferous (Ag) galena mineralization. A grab sample from near the former Providence Mine had 116 oz/ton Ag and 59% Pb. A 1.0 m chip sample at the Hunt vein had 34 oz/T Ag and 37.1% Pb.

6.1.4 Work Done in 2012

The relevant report is Assessment Report 33309 by Doyle, L.E.

Three drill holes (744 metres) were completed in 2012. Fifteen trenches were excavated. Work was concentrated near the former Providence Mine. The targets were extensions of Ag-Pb-Au bearing quartz veins known from surface exposures. Though no high grade mineralization was discovered, volcanic rock and hydrothermal alteration evident on core and trenches indicated continued exploration was warranted.

6.1.5 Work Done in 2013

The relevant report is Assessment Report 34331 by Turna, R., et al.

Thirty-eight soil and rock samples were collected and geological mapping was done in the area of Black Bear East. The final drill hole of the 2012 drill program at Black Bear was completed.

6.1.6 Work Done in 2015-2016

The relevant assessment reports by Turna, R. are , Assessment Report 36640, dated March 15, 2016 and Assessment Report 35945, dated May 1, 2016.

Re. Assessment Report 36640 (Main Group):

129 rocks were analyzed along traverses off roads in Areas A, B and C. Sample no. 4351 had 15.23 ppm Au in quartz in Area A. This sample was a new rock exposure on a newly constructed road spur. It was also anomalous in Zn (163 ppm), Cu (233 ppm) and Bi (29 ppm). Otherwise, the result were 1,368 ppm in Zn, 8,651 ppm in Cu and 6,892 in Pb. Mo (up to 143 ppm), As (up to 758 ppm), Bi (up to 32 ppm) were locally anomalous. Follow up rock and soil sampling were recommended.

Re. Assessment Report 35945 (Black Bear East):

192 rocks were analyzed along traverses off roads in Areas C, E and F. Highest results were: Zn (up to 1,341 ppm), Cu (up to 529 ppm), Pb (up to 927 ppm), As (up to 264 ppm), Bi (up to 38 ppm). Zn anomalies occurred more extensively. Further rock and soil sampling was recommended.

6.1.7 Work Done in 2016

The relevant report is Assessment Report 36462 by Turna, R.

240 rock samples were analyzed along traverses in on tenure no. 1038879 in the southeast corner of the property. Highest results were: Zn (up to 568 ppm), Cu (up to 9,778 ppm), As (up to 393 ppm) and Bi (up to 23 ppm). Continued rock and soil sampling was recommended.

6.1.8 Work Done in 2017

The relevant report is Assessment Report 36689 by Turna, R.

204 rock samples were analyzed along traverses in on tenure no. 1038881. Five float rock samples has Au values between 9.19 ppm and 11.19 ppm Au in quartz veins in mafic schist.

7.0 GEOLOGY

7.1 Regional Geology

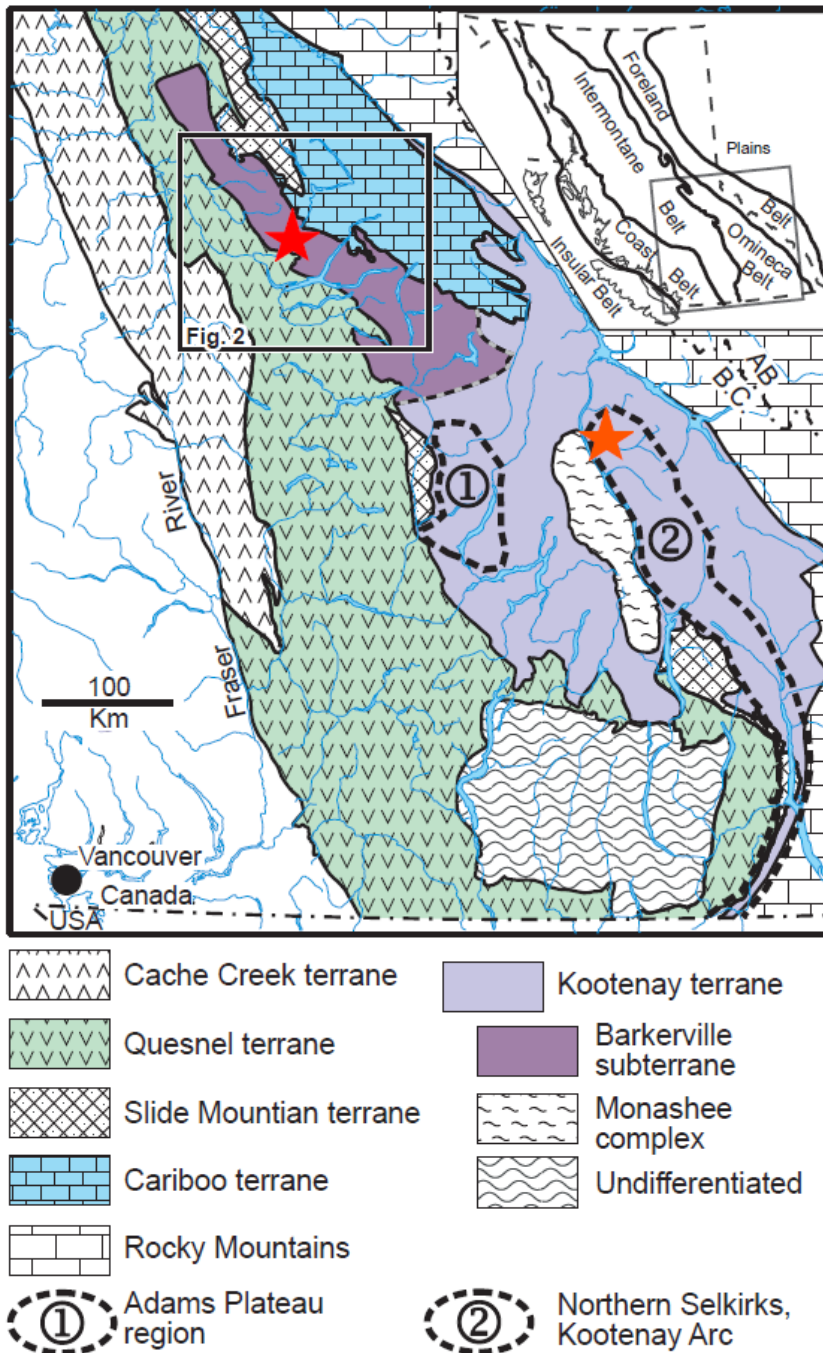


Figure No. 4 Terrane Map of Southern British Columbia. Barker Minerals' properties are indicated by the red star over the Barkerville subterrane. The brown star to the SE is the Barkerville Gold Mine Ltd.' Goldstream volcanogenic massive sulphide deposit. Map is from Ferri, F. & Schiarizza, P., 2006.

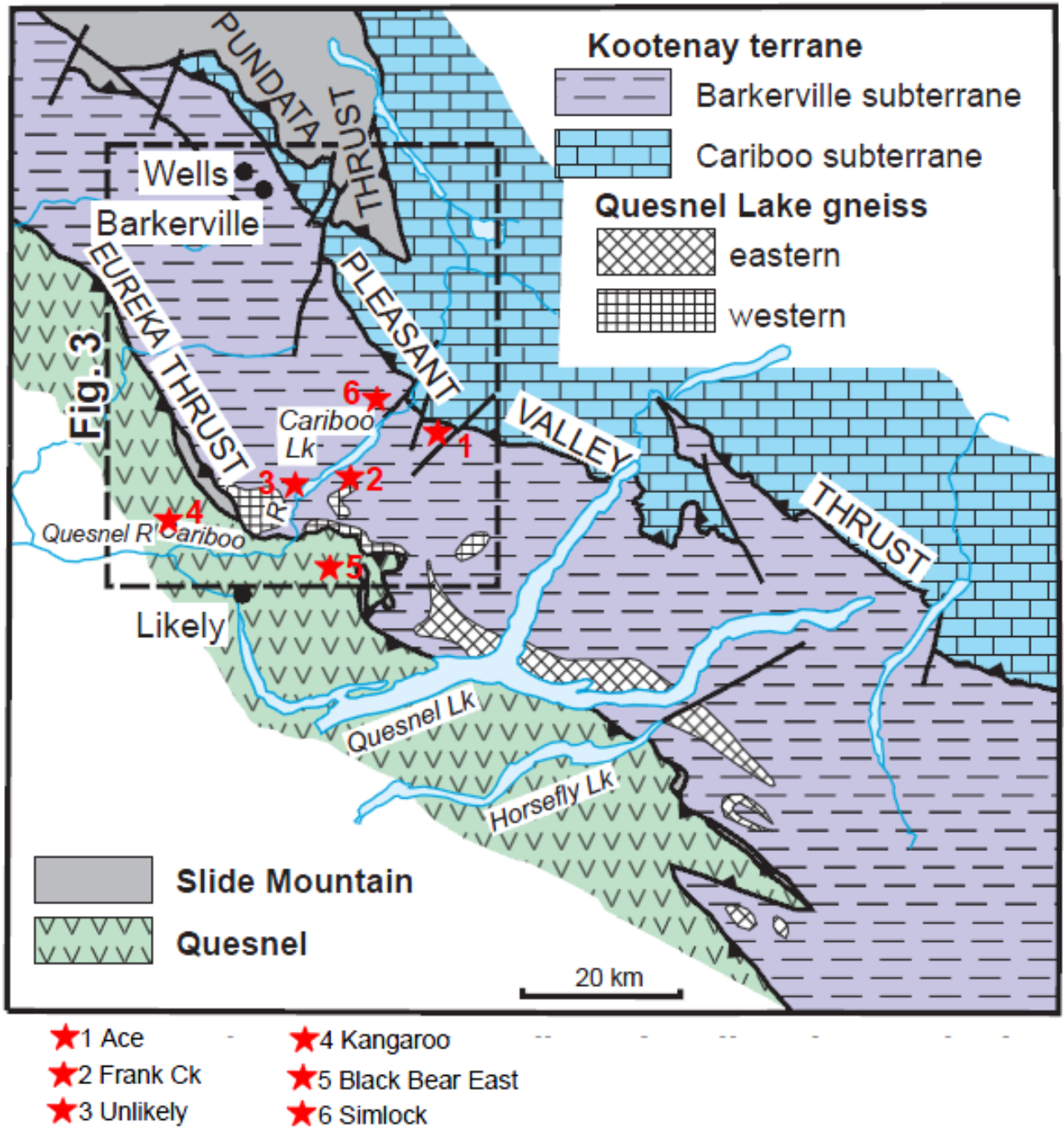


Figure No. 5 Terrane Map of Cariboo Lake – Wells Area. Several Barker Minerals' properties are indicated by red stars. Map is from Ferri, F. & Schiarizza, P., 2006.

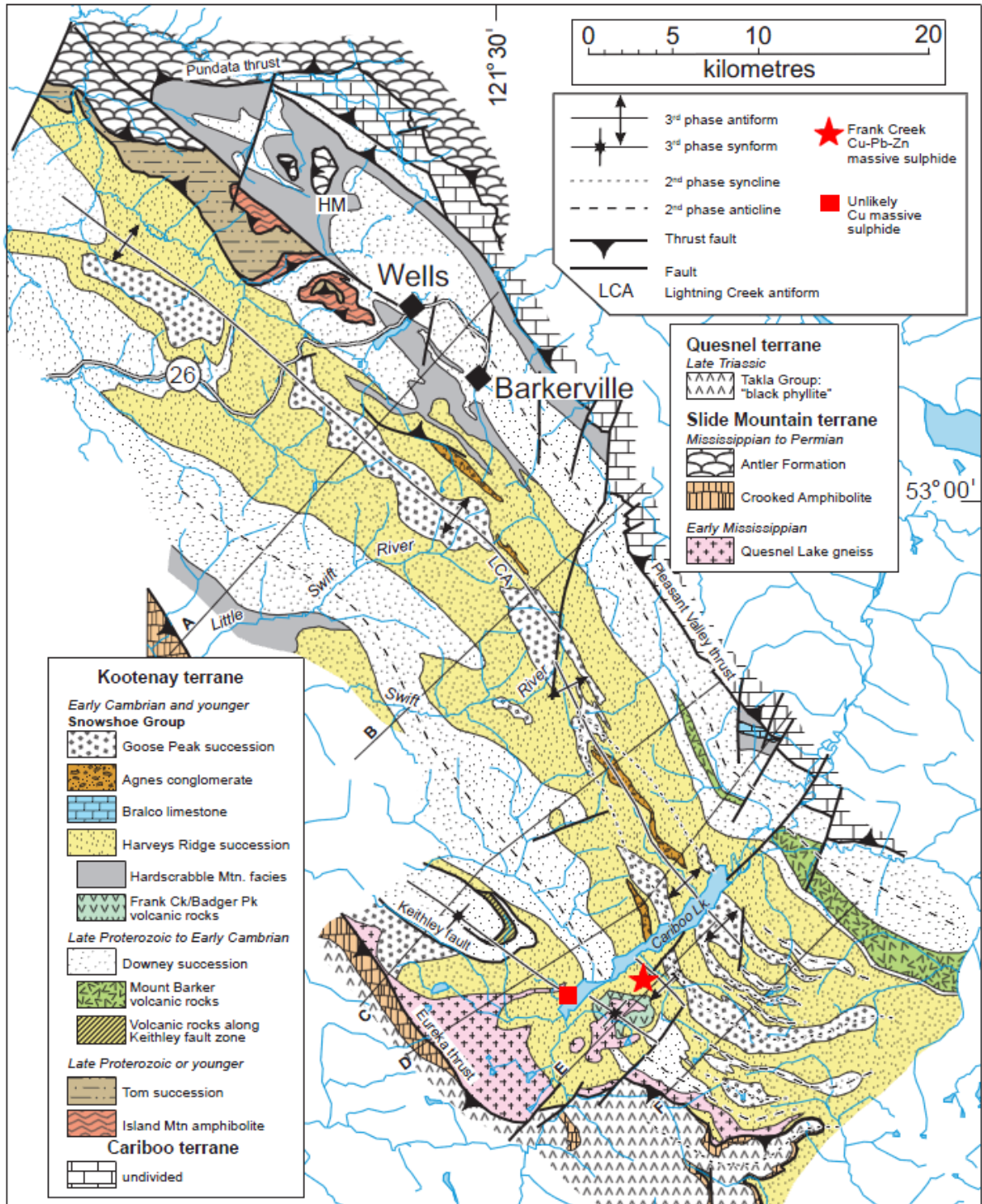


Figure No. 6 Geology of Wells-Cariboo Lake area. Highlighted on the BCGS map are Barker Minerals' Frank Creek and Unlikely massive sulphide prospects. The Harveys Ridge succession consists of siltstone, quartzite and the Frank Creek volcanics. Map is from Ferri, F. & Schiarizza, P., 2006.

The geological descriptions below derive mainly from Struik (1988), Panteleyev et al. (1996) and Payne and Perry (2001).

During the mid-Jurassic the North American continental plate collided with a group of island arcs to the west. Regional deformation and metamorphism are related to these events.

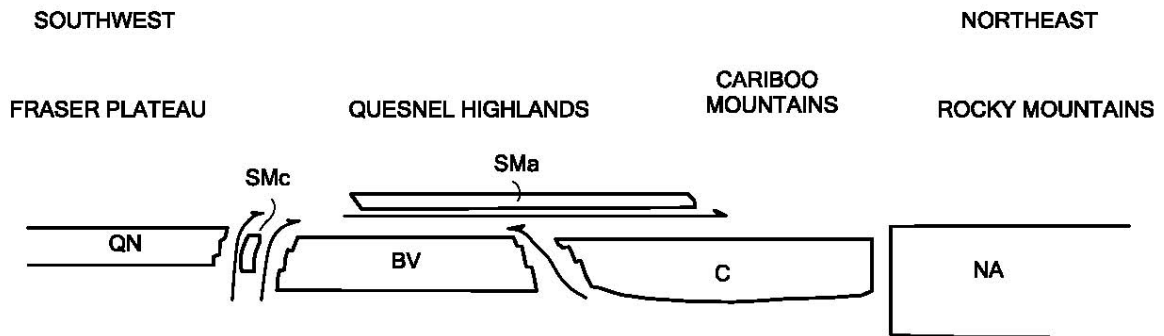


Figure No. 7 Schematic regional structural section from southwest to northeast across the four Terranes in Barker Minerals' claims area, showing the relative structural position of the Terranes. The Terrane symbols are BV-Barkerville, C-Cariboo, Sma-Slide Mountain (Antler Formation), SMC-Slide Mountain (Crooked amphibolite), QN-Quesnel and NA-North American. (after Struik, 1988).

Quesnel Terrane

The Late Triassic to Early Jurassic Quesnel Terrane...was accreted to the North American continent, in part by subduction and in part by obduction. The Eureka Thrust fault marks the boundary between the Quesnel and Barkerville terranes. The terrane is partly submarine and partly subaerial, consisting of volcanic and volcanoclastic rocks and co-magmatic intrusions, with minor carbonate lenses and related sedimentary rocks.

The principal assemblage in the Quesnel Terrane is the Triassic-Jurassic Nicola Group island arc – marginal basin sequence. The underlying rocks are the Crooked Amphibolite, part of the Slide Mountain assemblage, a mylonitized mafic and ultramafic unit of oceanic marginal basin volcanic and sedimentary rocks. Rocks of Quesnel Terrane and Crooked Amphibolite are structurally coupled and tectonically emplaced by the Eureka Thrust onto the Barkerville Terrane, to the east.

Two lithostratigraphic subdivisions of the Quesnel Terrane consists of: a basal Middle to Late Triassic metasedimentary unit of dominantly black phyllitic rocks, approximately 7 km thick, and an overlying Late Triassic to Early Jurassic volcanic arc assemblage, approximately 9 km thick. The overlying volcanic rocks outline a northwesterly trending belt of subaqueous and subaerial volcanic rocks, deposited along a series of volcanic-intrusive centres that define the Quesnel island arc of predominantly alkalic basalts.

Within...the northern extension of the Quesnel Trough, the term...Takla Group has been applied to rocks identical to the Quesnel belt rocks...Equivalent rocks to the south...are generally referred to as Nicola Group...Baily (1978) pointed out the similarity of the Quesnel volcanic units with both the Nicola Group rocks to the south and the Takla Group rocks to the north...The term Takla leads to ambiguity because in northern British Columbia it has been used for rocks in both Quesnel and Stikine terranes...The usage for the Triassic-Jurassic volcanic arc and related rocks in Quesnellia currently preferred is Nicola Group. The term Takla Group possibly should be discarded... (Panteleyev et al., (1996).

The Quesnel Trough is a well-mineralized region typical of other Late Triassic to Early Jurassic volcano-plutonic island arcs in the Cordillera. It hosts a wide variety of mineral deposits. The principal recent exploration and economic development targets in the central Quesnel belt are alkalic intrusion-related porphyry copper-gold deposits and gold-bearing propylitic alteration zones formed in volcanic rocks peripheral to some of the intrusions. Other important targets are auriferous quartz veins in the black phyllite metasedimentary succession. The veins in some black phyllite members have potential to be mined as large tonnage, low-grade deposits. Tertiary rocks are mineralized with copper and gold. Antimony-arsenic and mercury mineralization in some apparently low temperature quartz-calcite veins indicated the potential for epithermal deposits. Placer mining for gold, said to occur together with platinum, has been of major historical and economic importance.

Slide Mountain Terrane

Rocks of the Devonian to Late Triassic Slide Mountain Terrane were partly obducted, partly subducted during collision of an oceanic plate with the continent. Small slices of mainly mafic volcanic rocks and ultramafic rocks of the Slide Mountain Terrane occur in and parallel to the Eureka thrust. Minor lithologies include chert, meta-siltstone and argillite.

The Crooked Amphibolite, considered to likely be a part of the Slide Mountain Terrane, includes three major constituent rock types: greenstone, metagabbro and meta-ultramafite. North of Quesnel Lake, the map units consist of mafic metavolcanics, amphibolite, chlorite schist, serpentinite, ultramafic rocks and pillow lavas. Chemical analyses indicate subalkaline tholeiitic compositions of basalts formed on the ocean floor. If the Crooked Amphibolite is a sheared and metamorphosed equivalent of the Antler Formation and is part of the Slide Mountain Terrane, it is separated from the underlying Barkerville Terrane by the Eureka Thrust, a wide zone of mylonitization. The Crooked amphibolite and the overlying rocks of Quesnel Terrane are structurally coupled and emplaced tectonically onto Barkerville Terrane.

Barkerville Terrane

The Barkerville Terrane is made up of the Snowshoe Group and Quesnel Lake gneiss. The Snowshoe Group rocks are Upper Proterozoic to Upper Devonian metasediments, considered correlative in age with the Eagle Bay Formation in the Kootenay Terrane to the south. The Snowshoe Group rocks are dominated by varieties of grit, quartzite, pelite,

limestone and volcanoclastic rocks. The stratigraphic sequence is not well understood. The region was deformed by intense, complex, in part isoclinal folding and overturning. Locally, strong shear deformation produced mylonitic textures. The Quesnel Lake Gneiss is a Devonian to Mississippian intrusive unit varying in composition from diorite to granite to syenite. It is generally coarse grained, leucocratic, often with megacrysts of potassium feldspar. The main body of gneiss is 30 km long by 3 km wide and is elongated parallel to the eastern border of the Intermontane belt. Its contacts are in part concordant with, and in part perpendicular to, metamorphic layering.

The contact between the Barkerville Terrane and Cariboo Terrane to the east is the Pleasant Valley Thrust. The Barkerville and Cariboo Terranes were juxtaposed prior to emplacement of the Slide Mountain Terrane which was thrust over both of them. The northeastern third of the Barkerville Terrane is the main zone of economic interest in the Cariboo district. Struik described it as “gold-enriched”, because it contains the historic Wells and Barkerville gold mines and the Cariboo Hudson deposit, approximately 40 km and 20 km northwest of the project area, respectively.

Cariboo Terrane

The northeastern part of Barker Minerals’ ‘Peripheral’ claim group is underlain by Precambrian to Permo-Triassic marine peri-cratonic sedimentary strata of the Cariboo terrane. The Cariboo Terrane consists mainly of limestone and dolomite with lesser siliceous, clastic, sedimentary rocks and argillite. Some geologists believe that the Cariboo Terrane is a shallow, near-shore facies and the Barkerville is a deeper, offshore facies of the same erosion-deposition system. No rifting is suspected between the Cariboo Terrane and the North American continent, in contrast to that between the Barkerville Terrane and the North American continent. Lithologies within the Cariboo Terrane correlate well with parts of the Classier Platform and Selwyn Basin of Yukon and northern British Columbia.

The Cariboo and Barkerville Terranes are separated by the regional Pleasant Valley Thrust fault, which dips moderately to steeply northeast. Struik (1988) states the Cariboo block was thrust from the east over the Barkerville block along a strike length of over 100 km. The Cariboo Terrane was cut by the Jurassic-Cretaceous Little River stock, a medium-grained granodiorite grading to quartz monzonite. Some of the carbonate layers in the lowest part of the Cariboo terrane (or upper part of the Barkerville Terrane) are enriched in zinc and lead. Since the 1970's, preliminary exploration on stratiform Zn-Pb targets has been conducted in this area.

Glaciation and glacial deposits

The last glacial stage that affected the Quesnel Highland, the Fraser glaciation, began 30,000 years ago. Much of this ice had melted by 10,000 years ago, but small remnants are preserved high in the alpine areas of the Cariboo Mountains. At lower elevations, glaciers of this age scoured the debris left by preceding ice advances, almost completely destroying them, leaving a chaotic assemblage of unsorted till, moraine and drift, with lenses of gravel and sand that had been roughly sorted by melt water and rivers, leaving behind beds of silt and clay that were stratified by settlement in ice-dammed lakes. In the Cariboo area, the

debris covers bedrock in valleys below 1,700 m, leaving typical glacial features such as U-shaped valleys, ice-sculpted drumlins, moraine terraces and glacier and river benches. On the Barker Minerals properties, glacial deposits range from one to a few tens of metres thick. Some glacial till deposits are overlain by well-bedded glaciolacustrine clay and silt deposits up to a few tens of metres thick.

In much of the Cariboo district, a layer of distinctive, hard, compact, semi-rigid blue clay sits either on or slightly above bedrock and acts as “false” bedrock. It was formed from glacial drift left behind by the last ice advance prior to the Fraser glaciation and was compacted by the weight of the Fraser stage ice. In the placer-gold areas of the Cariboo, large amounts of gold were recovered from gravel resting on this clay. In places the clay layer was penetrated by the placer miners to reach richer “pay streaks” on true bedrock below.

7.2 Local Geology at Black Bear East Area

Barker Minerals is exploring the Black Bear East property for Au-quartz veins and polymetallic veins. The possibility of stratigraphically controlled disseminated gold mineralization (similar to the Spanish Mountain Gold Ltd. project 5.0 km to the southwest) is also considered. Though outcrop is sparse, the area of the property is underlain by dark sedimentary rocks and chloritic mafic volcanics. The economic target at Black Bear East is high grade Ag ± Au in quartz-galena veins hosted in sedimentary rocks.

8.0 EXPLORATION PROGRAM, 2017

8.1 Sampling Method and Approach

Rock samples were analyzed for multiple elements using the Niton XL3t handheld X-ray fluorescence analyzer from Thermo Scientific Inc. Further information on this instrument is at the Niton website <http://www.niton.com/en/niton-analyzers-products/xl3/xl3t>. An overview of sample analysis using energy dispersive X-ray fluorescence (EDXRF), adapted from the Niton website, is in Appendix B.

Most rock analyses were done at Barker Minerals’ field office in Likely. Coordinates were collected at all sample locations. The coordinates and rock descriptions are provided in Table No. 2. The rocks were analyzed in a manner to determine both their “high grade” and “low grade” values at each site, in order to minimize a “nugget” effect and to determine background values. Quartz veins were also analyzed where they occurred. The XRF analysis method does not replace laboratory assay. It detects the presence or absence of multiple elements in prospecting and, up to a certain point, the intensity of mineralization and correlation among elements in a specimen. The XRF is very useful in analysis for base economic and pathfinder metals though Au needs to be in relatively high grade in order to be detected by the XRF. Altogether, 216 rock analyses were done for 28 elements each time.

8.2 Economic Targets and Work Done

Grab rock sampling was done over sub-outcrops and float in an area of approximately 1.2 square kilometers. The economic target is gold-bearing quartz veins. Previous geochemical surveys over Black Bear had determined Zn and Cu were the best pathfinder elements. In the current survey, high values of Pb, As, Zn and Cu occurred in most of the grab rock samples. Seventeen rock samples additionally had high values in Ag. One rock sample had 418.53 ppm Au.

In Area A, in samples with high Ag and Au, results (in ppm) were thus:

<u>XRF No.</u>	Pb	As	Zn	Cu	Ag	Au
60	170,234	7,008	464		1,670	
63	225,941	9,588	68	182	1,426	
67	248,344	9,877	955		1,728	
73	200,785	7,839	83	64	2,093	
77	339,268	14,042	414	163	2,223	
83	320,498	13,530	305		2,449	
106	84,167	2,521	72		1,956	
128	212,975	8,733	72,724	142	1,478	
129	301,057	13,856	5,889	109	2,709	
142	291,574	12,776	360	102	1,970	
184	215,397	9,550	51	49	1,541	
190	240,021	8,350	159		2,494	

In Area B, in samples with high Ag and Au, results (in ppm) were thus:

<u>XRF No.</u>	Pb	As	Zn	Cu	Ag	Au
22	274,795	10,424	496	100	7,404	
35	354,046	15,765	113		3,182	
44	283,150	11,595	358		1,709	
137	324,660	12,432	81	164	2,362	
202	266,585	11,173	587		2,164	
204	41,550	1,699	386			418.53

Values below the levels of detection are not provided above.

The extremely high results in Pb, As, Ag and in one case, Au, suggest the quartz-veined rock samples contained silver-bearing galena. The single high gold result suggests the possible occurrence of gold in these veins though much more erratically. The high results in the sample analyses cannot be considered as representative of metal grades over any

distance. They acknowledge the spot occurrences of high grade mineralization at the points targeted by the XRF instrument.

Zn and Cu were much less useful as pathfinder elements for Ag or Au than they were in previous surveys elsewhere on the Property. Past surveys suggested the presence of a quartz vein system containing Au, with Zn and Cu as the primary pathfinders. The current survey suggest the presence, in the 2017 work area, of a different quartz vein system containing Ag, with Pb and As the primary pathfinders, and with the possibility of Au concentrations.

9.0 CONCLUSIONS

Eighteen of the sub-outcrop and float rock samples were exceptionally high in Ag or Au. Pb and As were the best pathfinders for this system of Ag-bearing quartz veins

Gold (418.53 ppm Au) was above the level of detection in only one sample which was also high in Pb and As but not Ag.

10.0 RECOMMENDATIONS

Systematic soil and rock sampling should be done over Black Bear East in the area of the 2017 survey to discover the source locations of the galena and silver-bearing quartz veins.

APPENDIX A

Glossary of Technical Terms and Abbreviations

Glossary of Technical Terms and Abbreviations

Anomalous	Chemical and mineralogical changes and higher than typical background values in elements in a rock resulting from reaction with hydrothermal fluids or increase in pressure or temperature.
Anomaly	The geographical area corresponding to anomalous geochemical or geophysical values.
Argentiferous	Containing silver.
Background	The typical concentration of an element or geophysical response in an area, generally referring to values below some threshold level, above which values are designated as anomalous.
BBE	Black Bear East property.
BCGS	British Columbia Geological Survey.
B.C. MEMPR	British Columbia Ministry of energy Mines and Petroleum Resources.
cm	Centimetre.
Cratonic	Pertaining to a craton, an old part of the continental crust, generally making up the interior portion of a continent such as North America.
DCIP	An electrical method which uses the injection of current and the measurement of voltage and its rate of decay to determine the subsurface resistivity and chargeability.
DDH	Diamond drill hole.
eg.	<i>exempli grātiā</i> (for the sake of example).
EM	Electromagnetic.
E-W	East-West.
Float	Loose rocks or boulders; the location of the bedrock source is not known.
GBC	Geoscience BC.
GSC	Geological Survey of Canada.

Grab sample	A sample of a single rock or selected rock chips collected from within a restricted area of interest.
g/t	Grams per tonne (metric tonne). 34.29 g/t (metric tonnes) = 1.00 oz/T (short tons).
Ha	Hectare - an area totalling 10,000 square metres, e.g., an area 100 metres by 100 metres.
HLEM	Horizontal loop electromagnetic.
IP	Induced polarization.
km	Kilometre.
lb.	Pound.
Leucocratic	Light-coloured.
m	Metre.
Max-Min	An HLEM technique to test for resistivity and conductivity of rocks.
MT	Magnetotelluric. A electrical method that uses natural variations in the Earth's magnetic field to induce electric current in the ground to determine the subsurface resistivity.
my	Million years.
NE-SW	Northeast-Southwest.
NNW-SSE	North northwest – South southeast.
NW	Northwest.
NW-SE	Northwest - Southeast.
N-S	North-South.
OF	Open File.
oz.	Ounce.
oz/T	ounces per ton (Imperial measurement).

34.29 g/t (metric tonnes) = 1.00 oz/T (short tons).

oz/st ounces per short ton (Imperial measurement, same as oz/T).
34.29 g/t (metric tonnes) = 1.00 oz/st (short tons).

Pathfinder A metallic element associated with an ore element such as silver or gold. Areas of anomalous “pathfinder” elements can suggest the possible presence of ore elements though the latter may not be detected initially.

ppb Parts per billion.

ppm Parts per million (1 ppm = 1,000 ppb = 1 g/t).

Protolith The original rock before it was metamorphosed.

QUEST Quesnellia Exploration Strategy, a BCGS geophysical survey.

Sedex Sedimentary-exhalative mineral deposit type.

SE Southeast.

TEM or TDEM Time Domain EM.

Tensor-magnetotelluric See MT.

Tholeiitic A type of basalt. The most common volcanic rocks on Earth, produced by submarine volcanism at mid-ocean ridges and make up much of the ocean crust. Chemically, these basalts have been described as subalkaline, that is, they contain less (Na_2O plus K_2O) at similar SiO_2 than alkali basalt.

TRIM Terrain Resource Information Management, series of 1:20,000 scale maps.

VLF Very low frequency.

VLF-EM Very low frequency electromagnetic.

VMS Volcanic-related massive sulphide.

XRF X-ray fluorescence.

APPENDIX B

Analytical Methods

Overview of sample analysis using energy dispersive X-ray fluorescence using the Thermo Scientific Niton XL3t handheld XRF analyzer

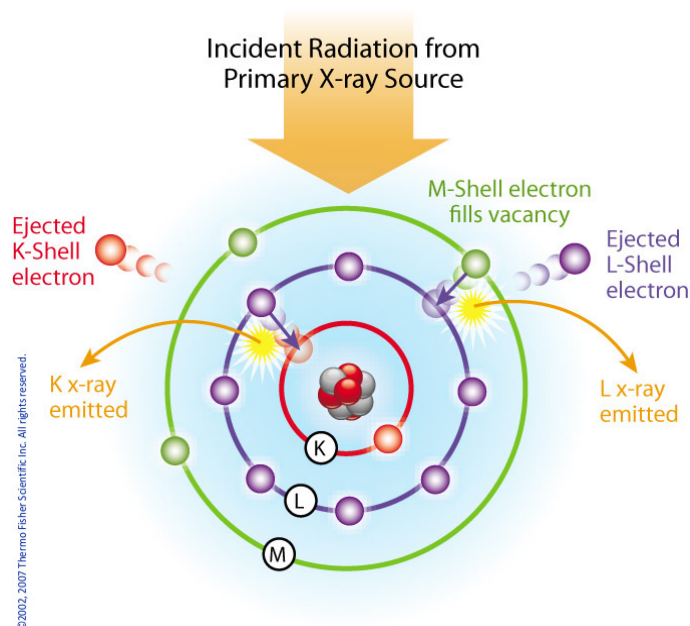
Thermo Scientific portable energy-dispersive x-ray fluorescence (EDXRF) analyzers, commonly known as XRF analyzers, can quickly and nondestructively determine the elemental composition of metal and precious metal samples of rocks, ore and soil.

Up to 40 elements may be analyzed simultaneously by measuring the characteristic fluorescence x-rays emitted by a sample. XRF analyzers can quantify elements ranging from magnesium (Mg - element 12) through uranium (U - element 92) and measure x-ray energies from 1.25 keV up to 85 keV in the case of Pb K-shell fluorescent x-rays excited with a ^{109}Cd isotope. These instruments also measure the elastic (Rayleigh) and inelastic (Compton) scatter x-rays emitted by the sample during each measurement to determine, among other things, the approximate density and percentage of the light elements in the sample.

Elemental Analysis - A Unique Set of Fingerprints

How does XRF work? Each of the elements present in a sample produces a unique set of characteristic x-rays that is a "fingerprint" for that specific element. XRF analyzers determine the chemistry of a sample by measuring the spectrum of the characteristic x-ray emitted by the different elements in the sample when it is illuminated by x-rays. These x-rays are emitted either from a miniaturized x-ray tube, or from a small, sealed capsule of radioactive material.

1. A fluorescent x-ray is created when an x-ray of sufficient energy strikes an atom in the sample, dislodging an electron from one of the atom's inner orbital shells.
2. The atom regains stability, filling the vacancy left in the inner orbital shell with an electron from one of the atom's higher energy orbital shells.
3. The electron drops to the lower energy state by releasing a fluorescent x-ray, and the energy of this x-ray is equal to the specific difference in energy between two quantum states of the electron.



Atom emits characteristic X-rays when illuminated by x-rays from a primary source.

When a sample is measured using XRF, each element present in the sample emits its own unique fluorescent x-ray energy spectrum. By simultaneously measuring the fluorescent x-rays emitted by the different elements in the sample, the Thermo Scientific portable XRF analyzers can rapidly determine those elements present in the sample and their relative concentrations - in other words, the elemental chemistry of the sample.



Overview of the Thermo Scientific Niton XL3t handheld XRF analyzer.

APPENDIX C

REFERENCES

REFERENCES

All Assessment Reports listed below are available for free download at the Ministry of Energy, Mines and Petroleum Resources' website for the Assessment Report Indexing System (ARIS).

<http://www.em.gov.bc.ca/Mining/GeolSurv/Aris/default.htm>

Bowman, A., Report on the Geology of the Mining District of Cariboo, British Columbia, in Geological and Natural History Survey of Canada Reports and Maps of Investigations and Surveys, 1887-1888; Selwyn, A R C; Geological Survey of Canada, Annual Report vol. 3, pt. 1, 1889; pages 1C-49C 5 sheets, including a Map of the Cariboo Mining District, GSC Map 278, (1889).

Brown, A.S., Geology of the Cariboo River Area, British Columbia, BC Department of Mines and Petroleum Resources, Bulletin No. 47, 1963.

Buckley, R., Geochemical Report, Like Claims, China Mountain Project, B.C., 1976 Work Program, October 6, 1976 (Assessment Report 6048).

Cooper, G.N., Geological and Geochemical Evaluation of the Trump Group Mineral Claims, December 1984. (Assessment Report 13285).

Doyle, L.E., Trenching, Prospecting, and Physical Work Assessment Report on the Cariboo, Tasse, Black Bear, and Peripheral Properties, April 29, 2011. (Assessment Report 32209).

Doyle, L.E., Diamond Drilling, Geological Mapping, Trenching, Prospecting, and Physical Work Assessment Report on the Frank Creek, Black Bear, and Simlock Properties, January 27, 2012. (Assessment Report 32696).

Doyle, L.E., Diamond Drilling and Physical Work Assessment Report from the Providence Target on the Black Bear Silver/Gold Property, October 4, 2012. (Assessment Report 33309).

Ferri, F., Hóy, T., and Friedman, R.M., Description, U-Pb Age and Tectonic Setting of the Quesnel Lake Gneiss, East-Central British Columbia, in Geological Fieldwork 1998, B.C. Ministry of Energy and Mines, Paper 1999-1.

Ferri, F., and O'Brien, B.H., Preliminary Geology of the Cariboo Lake Area, Central British Columbia (093A/11, 12, 13 and 14), in Geological Fieldwork 2001, B.C. Ministry of Energy and Mines, Paper 2002-1.

Ferri, F., and O'Brien, B.H., Geology of the Cariboo Lake Area, Central British Columbia (093A/11, 12, 13 and 14), B.C. Ministry of Energy and Mines, Open File 2003-1.

Ferri, F., and O'Brien, B.H., Geology and Massive Sulphide Potential of the Barkerville Terrane, Cariboo Lake Area, British Columbia, BC Geological Survey Branch, Cordillerran Roundup Poster No. 8, Information Circular 2002-3. http://www.empr.gov.bc.ca/DL/GSBPubs/InfoCirc/IC2002-3/08-Ferri_Barkerville.pdf

Ferri, F. & Schiarizza, P., Re-interpretation of the Snowshoe Group stratigraphy across a south-west verging nappe structure and its implications for regional correlations within the Kootenay terrane in Geological Association of Canada GAC Special Paper 45, 2006.

Geological Survey of Canada, Likely Survey, 2009. An airborne geophysical survey in 2008-2009 covering a 30 km x 150 km area oriented NW-SE between the latitudes of Quesnel and Williams Lake. A series of 1:50,000 scale magnetic and gamma-ray spectrometric maps, published as GSC Open Files 6157 to 6166.

Geological Survey of Canada, Cariboo Lake Survey, 2009. A detailed airborne geophysical survey over the central portion of the Likely survey. The flight lines were 200 m apart and oriented NE-SW as before. A series of 1:20,000 scale magnetic and electromagnetic maps published as GSC Open Files 6232 to 6252.

Jones, T.A., BB Group - Report on Geology & Geochemistry, July 1981. (Assessment Report 10251).

Jones, T.A., BT Group – Report on Geology & Geochemistry, March 1982. (Assessment Report 10252).

Logan, J.M. and Moynihan, D.P., Geology and Mineral Occurrences in the Quesnel River Map Area, central British Columbia (NTS 093B/16), in Geological Fieldwork 2008, B.C. Ministry of Energy and Mines, Paper 2009-1.

Logan, J.M. et. al., Bedrock Geology of the QUEST Map Area, central British Columbia, BCGS Map 2010-1, GBC Report 2010-5, GSC Open File 6476.

Mark, D.G., Geophysical Report on a Seismic Refraction Survey, on Placer Lease 1120, Spanish Creek Area, August 22, 1980. (Assessment Report 8318).

Matherly, M., B.B. Claim, Blackbear Mountain, Prospecting Report 1988, September 17, 1988. (Assessment Report 17751).

Matherly M., Paterson S., Assessment Report for Geology and Soil Geochemistry of the Spanish Creek Properties, November 15, 1989. (Assessment Report 19415).

Panteleyev, A., Bailey, D.G., Bloodgood, M.A. and Hancock K.D., Geology and Mineral Deposits of the Quesnel River – Horsefly Map Area, Central Quesnel Trough, British Columbia, NTS Mapsheets 93A/5, 6, 7, 11, 12, 13; 93B/9, 16; 93G/1; 93H4, (1996), BC Geological Survey Branch Bulletin 97.

Payne, J.G., Preliminary Lithological Report on the Frank Creek VMS Prospect – and the Linecutting and Grid Preparation on the Black Bear, Sellers, Upper Grain, and Tasse Prospects, August 1999. (Assessment Report 26003).

QUEST Survey: regarding numerous reports and maps see www.geosciencebc.com/s/Quest.asp.

Schiarizza, P., Bedrock Geology and Lode Gold Occurrences, Cariboo Lake to Wells, British Columbia (Parts of NTS 93A/13, 14; 93H/3,4), BC Ministry of Energy, Mines, and Petroleum Resources, Open File 2004-12.

Schiarizza, P. and Ferri, F., Barkerville Terrane, Cariboo Lake to Wells: A New Look at Stratigraphy, Structure and Regional Correlations of the Snowshoe Group, in Geological Fieldwork 2002, B.C. MEMPR, Paper 2003-1.

Struik, L.C., Bedrock Geology of Spanish Lake (93A11) and Parts of Adjoining Map Areas, British Columbia, GSC Open File 920, 1983.

Struik, L.C., Bedrock Geology of Quesnel Lake (93A10) and Part of Mitchell Lake (93A15) Map Areas, Central British Columbia, GSC Open file 962, 1983.

Struik, L.C., Structural Geology of the Cariboo Gold Mining District, East Central British Columbia, GSC Memoir 421, 1988.

Thompson, D.A., Report on the Otto Project, Likely Area, January 20, 1990. (Assessment Report 20062).

Turna, R., Drilling and Geological Assessment Report on the Frank Creek, Black Bear, Gerimi and Peripheral Properties, February 10, 2009a. Assessment Report 30764).

Turna, R., Technical Report on the Black Bear Property, Cariboo Lake Area, Cariboo Mining Division, British Columbia, October 5, 2009c. Report filed with System for Electronic Document Analysis and Retrieval (SEDAR) under authority of Canadian Securities Administrators (CSA).

Turna, R., Geochemical Assessment Report on the Frank Creek and Black Bear East Properties, tenure nos. 514364, 514272, December 13, 2014. (Assessment Report 35012).

Turna, R. Geological, Geochemical, Prospecting and Physical Work Assessment Report on the Frank Creek, Black Bear East and Peripheral Properties. February 18, 2015, Amended September 7, 2015. (Assessment Report 35157).

Turna, R., Logan, J., Doyle, L.E., Diamond Drilling, Geological Mapping, Trenching, Prospecting and Physical Work Assessment Report on the Black Bear and Frank Creek Properties, December 9, 2013. (Assessment Report: 34331).

Turna, R., Geochemical Assessment Report on the Main Group, Comprised of the Two Mile Creek, Ace, Black Bear East and peripheral properties, March 15, 2016 (Assessment Report 36640).

Turna, R., Geochemical Assessment Report on the Black Bear East Property, May 1, 2016 (Assessment Report 35945).

Turna, R., Geological - Geochemical Assessment Report on the Black Bear East Property, February 6, 2017. (Assessment Report 36462).

Turna, R., Geological - Geochemical Assessment Report on the Black Bear East Property, June 24, 2017. (Assessment Report 36689).

Turner, J.A., Geological and Geochemical Report on the Phantom 1 Claim, September 21, 1983. (Assessment Report 11458).

Tutt, D.W., Geology and Geochemistry of the Ace Cu-Au-Ag-Zn-(Pb) Property, Barkerville Subterranean East-Central BC, B.Sc. Thesis, University of Victoria, June 2000.

Woodsworth, B., Report on the Geology and Proposal for Development of [the Big 2 and Big 3 Claims], Blackbear Creek Area, October 1983. (Assessment Report 12566).

Additional References:

Barker Minerals Ltd. website <http://www.barkerminerals.com/s/Background.asp>

BC Ministry of Energy Mines and Petroleum Resources, Mineral Deposit Models:

Deposit Type I01 - Au-quartz veins

BC Ministry of Energy Mines and Petroleum Resources, Minfile Mineral Inventory:

Minfile No. 093A 043 (Spanish Mountain)

http://minfile.gov.bc.ca/report.aspx?f=PDF&r=Minfile_Detail.rpt&minfilno=093A++043

Minfile No. 093A 003 (Providence, Black Bear)

<http://minfile.gov.bc.ca/Summary.aspx?minfilno=093A%20%20003>

APPENDIX D

STATEMENT of AUTHOR'S QUALIFICATIONS

Statement of Author's Qualifications

I, Rein Turna, of the City of West Vancouver, British Columbia, hereby certify that:

1. I am Vice President of Exploration of Barker Minerals Ltd.
2. I am a graduate of the University of British Columbia with a B.Sc. in Geological Sciences granted in 1975.
3. I am a registered member of the Professional Engineers and Geoscientists of British Columbia.
4. I have worked as a geologist in British Columbia, Saskatchewan, Ontario, Yukon and Northwest Territories in Canada since 1975.

R. Turna

July 16, 2018

APPENDIX E

STATEMENT of EXPENDITURES

Barker Minerals Ltd.

Work was completed between October 20, 2017 to December 31, 2017

Work was done on claim #'s 1055646 & 1055647

Event # 5680374

Black Bear East Property - Geological - Office

Louis Doyle

Planning, managing & interpretation	2	\$ 600.00	\$ 1,200.00
Room & board	2	\$ 150.00	\$ 300.00

Rein Turna - Geologist

Report writing, maps and managing	5	\$ 600.00	\$ 3,000.00
Room & board	5	\$ 150.00	\$ 750.00

Colleen Doyle

Report compilation and filing	2	\$ 300.00	\$ 600.00
Room & board	2	\$ 150.00	\$ 300.00

\$ 6,150.00

Black Bear East Property - Geochemical - Field Days

	Date	Days	Rate	Subtotal
Louis Doyle -				
Rock collection - Black Bear East	November 7, 2017	1	\$ 600.00	\$ 600.00
Rock collection - Black Bear East	November 8, 2017	1	\$ 600.00	\$ 600.00
Rock collection - Black Bear East	November 9, 2017	1	\$ 600.00	\$ 600.00
Rock collection - Black Bear East	November 10, 2017	1	\$ 600.00	\$ 600.00
Rock collection - Black Bear East	November 11, 2017	1	\$ 600.00	\$ 600.00
Room & Board (day rate)		5	\$ 150.00	\$ 750.00
Vehicle & gas (day rate)		5	\$ 150.00	\$ 750.00
Brian Hall -				
Rock collection - Black Bear East	November 7, 2017	1	\$ 600.00	\$ 600.00
Rock collection - Black Bear East	November 8, 2017	1	\$ 600.00	\$ 600.00
Rock collection - Black Bear East	November 9, 2017	1	\$ 600.00	\$ 600.00
Rock collection - Black Bear East	November 10, 2017	1	\$ 600.00	\$ 600.00
Rock collection - Black Bear East	November 11, 2017	1	\$ 600.00	\$ 600.00
Room & Board (day rate)		5	\$ 150.00	\$ 750.00

Intentionally left blank

Barker Minerals Ltd.

Work was completed between October 20, 2017 to December 31, 2017

Work was done on claim #'s 1055646 & 1055647

Event # 5680374

Louis Doyle -

Rock sample preparation & XRF assistant	December 5, 2017	1	\$ 600.00	\$ 600.00
Rock sample preparation & XRF assistant	December 6, 2017	1	\$ 600.00	\$ 600.00
Rock sample preparation & XRF assistant	December 7, 2017	1	\$ 600.00	\$ 600.00
Room & Board (day rate)		3	\$ 150.00	\$ 450.00

Brian Hall -

XRF Analysis	December 5, 2017	1	\$ 600.00	\$ 600.00
XRF Analysis	December 6, 2017	1	\$ 600.00	\$ 600.00
XRF Analysis	December 7, 2017	1	\$ 600.00	\$ 600.00
Room & Board (day rate)		3	\$ 150.00	\$ 450.00

XRF rental

8 \$ 200.00 \$ 1,600.00

\$ 14,350.00

Black Bear East Property - Travel to/from

Louis Doyle

Travel to/from	November 6, 2017	1	\$ 600.00	\$ 600.00
Room & Board (day rate)		1	\$ 150.00	\$ 150.00
Vehicle & gas (day rate)		1	\$ 150.00	\$ 150.00

Brian Hall

Travel to/from	November 6, 2017	1	\$ 600.00	\$ 600.00
Room & Board (day rate)		1	\$ 150.00	\$ 150.00
Vehicle & gas (day rate)		1	\$ 150.00	\$ 150.00

Sub-total \$ 1,800.00

Black Bear East Property - Miscellaneous Expenditures

Exploration supplies & equipment

Safety equipment (MTC), exploration supplies & equipment, communication devices & quad

Exploration supplies & equipment \$ 265.00

Intentionally left blank!

Barker Minerals Ltd.

Work was completed between October 20, 2017 to December 31, 2017

Work was done on claim #'s 1055646 & 1055647

Event # 5680374

Black Bear East Property - Miscellaneous Expenditures - continued

Quad Rental	5	\$ 150.00	\$ 750.00
MTC rental	8	\$ 150.00	\$ 1,200.00
Communication devices			
Hand held radios, satellite phones, Spot emergency locator	5	\$ 24.00	\$ 120.00
	Sub-total		\$ 2,335.00

Black Bear East Property Expenditure Summary

Geological - Office	Sub-total	\$ 6,150.00
Geochemical - Field Days	Sub-total	\$ 14,350.00
Travel to/from	Sub-total	\$ 1,800.00
Misc. Expenditures	Sub-total	\$ 2,335.00
	Total	\$ 24,635.00

APPENDIX F

ROCK SAMPLE DESCRIPTIONS AND COORDINATES

Table No. 2
Black Bear East Rock Sample Coordinates and Descriptions

<u>XRF No.</u>	<u>Field No.</u>	<u>Fig. No. / Area</u>	<u>Type</u>	<u>Easting (X)</u>	<u>Northing (Y)</u>	<u>XRF Target and Description and Comment</u>	<u>Magnetic</u>
						<u>XRF Target Features</u> 1 = sample of main mass 4 = sulphide band 2 = quartz vein 5 = rusty, altered 3 = sulphide bleb 6 = other	Y or N
Black Bear Area Rock Sampling							
1	BBE-f17-01	Fig No 10 /Area B	Float	609589	5829846	3 Galena in qtz veinlets in siltstone.	N
2	BBE-f17-01a	Fig No 10 /Area B	Float	609591	5829844	3 Galena in qtz veinlets in siltstone.	N
3	BBE-f17-01b	Fig No 10 /Area B	Float	609593	5829842	3 Galena in qtz veinlets in siltstone.	N
4	BBE-f17-02	Fig No 10 /Area B	Float	609552	5829916	3 Galena in qtz veinlets in siltstone.	N
5	BBE-f17-02a	Fig No 10 /Area B	Float	609554	5829914	3 Galena in qtz veinlets in siltstone.	N
6	BBE-f17-02b	Fig No 10 /Area B	Float	609556	5829912	3 Galena in qtz veinlets in siltstone.	N
7	BBE-f17-03	Fig No 10 /Area B	Float	609509	5829988	3 Galena in qtz veinlets in siltstone.	N
8	BBE-f17-03a	Fig No 10 /Area B	Float	609511	5829986	3 Galena in qtz veinlets in siltstone.	N
9	BBE-f17-03b	Fig No 10 /Area B	Float	609513	5829984	3 Galena in qtz veinlets in siltstone.	N
10	BBE-f17-04	Fig No 10 /Area B	Float	609445	5830049	3 Galena in qtz veinlets in siltstone.	N
11	BBE-f17-04a	Fig No 10 /Area B	Float	609447	5830047	3 Galena in qtz veinlets in siltstone.	N
12	BBE-f17-04b	Fig No 10 /Area B	Float	609449	5830045	3 Galena in qtz veinlets in siltstone.	N
13	BBE-f17-05	Fig No 10 /Area B	Float	609471	5830103	2 Quartz vein	N
14	BBE-f17-05a	Fig No 10 /Area B	Float	609473	5830101	2 Quartz vein	N
15	BBE-f17-05b	Fig No 10 /Area B	Float	609475	5830099	2 Quartz vein	N
16	BBE-f17-06	Fig No 10 /Area B	Float	609518	5830175	2 Quartz vein	N
17	BBE-f17-06a	Fig No 10 /Area B	Float	609520	5830173	2 Quartz vein	N
18	BBE-f17-06b	Fig No 10 /Area B	Float	609522	5830171	2 Quartz vein	N
19	BBE-f17-07	Fig No 10 /Area B	Float	609591	5830275	2 Rusty quartz vein	N
20	BBE-f17-07a	Fig No 10 /Area B	Float	609593	5830273	2 Rusty quartz vein	N
21	BBE-f17-07b	Fig No 10 /Area B	Float	609595	5830271	2 Rusty quartz vein	N
22	BBE-f17-08	Fig No 10 /Area B	Float	609621	5830348	2 Rusty quartz vein	N
23	BBE-f17-08a	Fig No 10 /Area B	Float	609623	5830346	2 Rusty quartz vein	N
24	BBE-f17-08b	Fig No 10 /Area B	Float	609625	5830344	2 Rusty quartz vein	N
25	BBE-f17-09	Fig No 10 /Area B	Float	609703	5830393	3 Galena in qtz veinlets in siltstone.	N
26	BBE-f17-09a	Fig No 10 /Area B	Float	609705	5830391	3 Galena in qtz veinlets in siltstone.	N
27	BBE-f17-09b	Fig No 10 /Area B	Float	609707	5830389	3 Galena in qtz veinlets in siltstone.	N
28	BBE-f17-10	Fig No 10 /Area B	Float	609583	5830426	3 Galena in qtz veinlets in siltstone.	N
29	BBE-f17-10a	Fig No 10 /Area B	Float	609585	5830424	3 Galena in qtz veinlets in siltstone.	N

Table No. 2
Black Bear East Rock Sample Coordinates and Descriptions

XRF No.	Field No.	Fig. No. / Area	Type	Easting (X)	Northing (Y)	XRF Target and Description and Comment	Magnetic
30	BBE-f17-10b	Fig No 10 /Area B	Float	609587	5830422	3 Galena in qtz veinlets in siltstone.	N
31	BBE-f17-11	Fig No 10 /Area B	Float	609462	5830375	2 Siltstone with quartz veinlets.	N
32	BBE-f17-11a	Fig No 10 /Area B	Float	609464	5830373	2 Siltstone with quartz veinlets.	N
33	BBE-f17-11b	Fig No 10 /Area B	Float	609466	5830371	2 Siltstone with quartz veinlets.	N
34	BBE-f17-12	Fig No 10 /Area B	Float	609488	5830313	2 Siltstone with quartz veinlets.	N
35	BBE-f17-12a	Fig No 10 /Area B	Float	609490	5830311	2 Siltstone with quartz veinlets.	N
36	BBE-f17-12b	Fig No 10 /Area B	Float	609492	5830309	2 Siltstone with quartz veinlets.	N
37	BBE-f17-13	Fig No 10 /Area B	Float	609410	5830285	2 Rusty quartz vein	N
38	BBE-f17-13a	Fig No 10 /Area B	Float	609412	5830283	2 Rusty quartz vein	N
39	BBE-f17-13b	Fig No 10 /Area B	Float	609414	5830281	2 Rusty quartz vein	N
40	BBE-f17-14	Fig No 10 /Area B	Float	609429	5830233	2 Rusty quartz vein	N
41	BBE-f17-14a	Fig No 10 /Area B	Float	609431	5830231	2 Rusty quartz vein	N
42	BBE-f17-14b	Fig No 10 /Area B	Float	609433	5830229	2 Rusty quartz vein	N
43	BBE-f17-15	Fig No 10 /Area B	Float	609345	5830189	2 Rusty quartz vein	N
44	BBE-f17-15a	Fig No 10 /Area B	Float	609347	5830187	2 Rusty quartz vein	N
45	BBE-f17-15b	Fig No 10 /Area B	Float	609349	5830185	2 Rusty quartz vein	N
46	BBE-f17-16	Fig No 10 /Area B	Float	609305	5830087	2 Rusty quartz vein	N
47	BBE-f17-16a	Fig No 10 /Area B	Float	609307	5830085	2 Rusty quartz vein	N
48	BBE-f17-16b	Fig No 10 /Area B	Float	609309	5830083	2 Rusty quartz vein	N
49	BBE-f17-17	Fig No 10 /Area B	Float	609363	5830039	2 Rusty quartz vein	N
50	BBE-f17-17a	Fig No 10 /Area B	Float	609365	5830037	2 Rusty quartz vein	N
51	BBE-f17-17b	Fig No 10 /Area B	Float	609367	5830035	2 Rusty quartz vein	N
52	BBE-f17-18	Fig No 10 /Area B	Float	609169	5829957	1 Main mass of siltstone.	N
53	BBE-f17-18a	Fig No 10 /Area B	Float	609171	5829955	1 Main mass of siltstone.	N
54	BBE-f17-18b	Fig No 10 /Area B	Float	609173	5829953	1 Main mass of siltstone.	N
55	BBE-f17-19	Fig No 9 /Area A	Float	609098	5829928	3 Quartz veinlets in grey altered schist.	N
56	BBE-f17-19a	Fig No 9 /Area A	Float	609100	5829926	3 Quartz veinlets in grey altered schist.	N
57	BBE-f17-19b	Fig No 9 /Area A	Float	609102	5829924	3 Quartz veinlets in grey altered schist.	N
58	BBE-f17-20	Fig No 9 /Area A	Float	609066	5829840	3 Quartz veinlets in grey altered schist.	N
59	BBE-f17-20a	Fig No 9 /Area A	Float	609068	5829838	3 Quartz veinlets in grey altered schist.	N
60	BBE-f17-20b	Fig No 9 /Area A	Float	609070	5829836	3 Quartz veinlets in grey altered schist.	N
61	BBE-f17-21	Fig No 9 /Area A	Float	609013	5829782	3 Quartz veinlets in grey altered schist.	N
62	BBE-f17-21a	Fig No 9 /Area A	Float	609015	5829780	3 Quartz veinlets in grey altered schist.	N
63	BBE-f17-21b	Fig No 9 /Area A	Float	609017	5829778	3 Quartz veinlets in grey altered schist.	N

Table No. 2
Black Bear East Rock Sample Coordinates and Descriptions

XRF No.	Field No.	Fig. No. / Area	Type	Easting (X)	Northing (Y)	XRF Target and Description and Comment	Magnetic
64	BBE-f17-22	Fig No 9 /Area A	Float	608954	5829695	3 Galena in qtz veinlets in siltstone.	N
65	BBE-f17-22a	Fig No 9 /Area A	Float	608956	5829693	3 Galena in qtz veinlets in siltstone.	N
66	BBE-f17-22b	Fig No 9 /Area A	Float	608958	5829691	3 Galena in qtz veinlets in siltstone.	N
67	BBE-f17-23	Fig No 9 /Area A	Float	608849	5829634	3 Galena in qtz veinlets in siltstone.	N
68	BBE-f17-23a	Fig No 9 /Area A	Float	608851	5829632	3 Galena in qtz veinlets in siltstone.	N
69	BBE-f17-23b	Fig No 9 /Area A	Float	608853	5829630	3 Galena in qtz veinlets in siltstone.	N
70	BBE-f17-24	Fig No 9 /Area A	Float	608690	5829589	3 Galena in qtz veinlets in siltstone.	N
71	BBE-f17-24a	Fig No 9 /Area A	Float	608692	5829587	3 Galena in qtz veinlets in siltstone.	N
72	BBE-f17-24b	Fig No 9 /Area A	Float	608694	5829585	3 Galena in qtz veinlets in siltstone.	N
73	BBE-f17-25	Fig No 9 /Area A	Float	608982	5830155	1 Main mass of siltstone.	N
74	BBE-f17-25a	Fig No 9 /Area A	Float	608984	5830153	1 Main mass of siltstone.	N
75	BBE-f17-25b	Fig No 9 /Area A	Float	608986	5830151	1 Main mass of siltstone.	N
76	BBE-f17-26	Fig No 9 /Area A	Float	608927	5830089	1 Main mass of siltstone.	N
77	BBE-f17-26a	Fig No 9 /Area A	Float	608929	5830087	1 Main mass of siltstone.	N
78	BBE-f17-26b	Fig No 9 /Area A	Float	608931	5830085	1 Main mass of siltstone.	N
79	BBE-f17-27	Fig No 9 /Area A	Float	608880	5829945	1 Main mass of siltstone.	N
80	BBE-f17-27a	Fig No 9 /Area A	Float	608882	5829943	1 Main mass of siltstone.	N
81	BBE-f17-27b	Fig No 9 /Area A	Float	608884	5829941	1 Main mass of siltstone.	N
82	BBE-f17-28	Fig No 9 /Area A	Float	608826	5829880	3 Galena in qtz veinlets in siltstone.	N
83	BBE-f17-28a	Fig No 9 /Area A	Float	608828	5829878	3 Galena in qtz veinlets in siltstone.	N
84	BBE-f17-28b	Fig No 9 /Area A	Float	608830	5829876	3 Galena in qtz veinlets in siltstone.	N
85	BBE-f17-29	Fig No 9 /Area A	Float	608817	5829790	3 Galena in qtz veinlets in siltstone.	N
86	BBE-f17-29a	Fig No 9 /Area A	Float	608819	5829788	3 Galena in qtz veinlets in siltstone.	N
87	BBE-f17-29b	Fig No 9 /Area A	Float	608821	5829786	3 Galena in qtz veinlets in siltstone.	N
88	BBE-f17-30	Fig No 9 /Area A	Float	608742	5829705	3 Galena in qtz veinlets in siltstone.	N
89	BBE-f17-30a	Fig No 9 /Area A	Float	608744	5829703	3 Galena in qtz veinlets in siltstone.	N
90	BBE-f17-30b	Fig No 9 /Area A	Float	608746	5829701	3 Galena in qtz veinlets in siltstone.	N
91	BBE-f17-31	Fig No 9 /Area A	Float	608610	5829636	3 Galena in qtz veinlets in siltstone.	N
92	BBE-f17-31a	Fig No 9 /Area A	Float	608612	5829634	3 Galena in qtz veinlets in siltstone.	N
93	BBE-f17-31b	Fig No 9 /Area A	Float	608614	5829632	3 Galena in qtz veinlets in siltstone.	N
94	BBE-f17-32	Fig No 9 /Area A	Float	608851	5830266	3 Galena in qtz veinlets in siltstone.	N
95	BBE-f17-32a	Fig No 9 /Area A	Float	608853	5830264	3 Galena in qtz veinlets in siltstone.	N
96	BBE-f17-32b	Fig No 9 /Area A	Float	608855	5830262	3 Galena in qtz veinlets in siltstone.	N
97	BBE-f17-33	Fig No 9 /Area A	Float	608766	5830132	3 Galena in qtz veinlets in siltstone.	N

Table No. 2
Black Bear East Rock Sample Coordinates and Descriptions

XRF No.	Field No.	Fig. No. / Area	Type	Easting (X)	Northing (Y)	XRF Target and Description and Comment	Magnetic
98	BBE-f17-33a	Fig No 9 /Area A	Float	608768	5830130	3 Galena in qtz veinlets in siltstone.	N
99	BBE-f17-33b	Fig No 9 /Area A	Float	608770	5830128	3 Galena in qtz veinlets in siltstone.	N
100	BBE-f17-34	Fig No 9 /Area A	Float	608729	5830062	3 Galena in qtz veinlets in siltstone.	N
101	BBE-f17-34a	Fig No 9 /Area A	Float	608731	5830060	3 Galena in qtz veinlets in siltstone.	N
102	BBE-f17-34b	Fig No 9 /Area A	Float	608733	5830058	3 Galena in qtz veinlets in siltstone.	N
103	BBE-f17-35	Fig No 9 /Area A	Float	608692	5829957	1 Rusty quartz veins	N
104	BBE-f17-35a	Fig No 9 /Area A	Float	608694	5829955	1 Rusty quartz veins	N
105	BBE-f17-35b	Fig No 9 /Area A	Float	608696	5829953	1 Rusty quartz veins	N
106	BBE-f17-36	Fig No 9 /Area A	Float	608624	5829840	1 Rusty quartz veins	N
107	BBE-f17-36a	Fig No 9 /Area A	Float	608626	5829838	1 Rusty quartz veins	N
108	BBE-f17-36b	Fig No 9 /Area A	Float	608628	5829836	1 Rusty quartz veins	N
109	BBE-f17-37	Fig No 9 /Area A	Float	608546	5829702	1 Rusty quartz veins	N
110	BBE-f17-37a	Fig No 9 /Area A	Float	608548	5829700	1 Rusty quartz veins	N
111	BBE-f17-37b	Fig No 9 /Area A	Float	608550	5829698	1 Rusty quartz veins	N
112	BBE-f17-38	Fig No 9 /Area A	Float	608449	5829732	1 Rusty quartz veins	N
113	BBE-f17-38a	Fig No 9 /Area A	Float	608451	5829730	1 Rusty quartz veins	N
114	BBE-f17-38b	Fig No 9 /Area A	Float	608453	5829728	1 Rusty quartz veins	N
115	BBE-f17-39	Fig No 9 /Area A	Float	608379	5829605	1 Rusty quartz veins	N
116	BBE-f17-39a	Fig No 9 /Area A	Float	608381	5829603	1 Rusty quartz veins	N
117	BBE-f17-39b	Fig No 9 /Area A	Float	608383	5829601	1 Rusty quartz veins	N
118	BBE-f17-40	Fig No 10 /Area B	Float	609360	5829826	1 Rusty quartz veins	N
119	BBE-f17-40a	Fig No 10 /Area B	Float	609362	5829824	1 Rusty quartz veins	N
120	BBE-f17-40b	Fig No 10 /Area B	Float	609364	5829822	1 Rusty quartz veins	N
121	BBE-f17-41	Fig No 10 /Area B	Float	609301	5829728	1 Rusty quartz veins	N
122	BBE-f17-41a	Fig No 10 /Area B	Float	609303	5829726	1 Rusty quartz veins	N
123	BBE-f17-41b	Fig No 10 /Area B	Float	609305	5829724	1 Rusty quartz veins	N
124	BBE-f17-42	Fig No 10 /Area B	Float	609177	5829671	1 Rusty quartz veins	N
125	BBE-f17-42a	Fig No 10 /Area B	Float	609179	5829669	1 Rusty quartz veins	N
126	BBE-f17-42b	Fig No 10 /Area B	Float	609181	5829667	1 Rusty quartz veins	N
127	BBE-f17-43	Fig No 9 /Area A	Float	609095	5829583	1 Rusty quartz veins	N
128	BBE-f17-43a	Fig No 9 /Area A	Float	609097	5829581	1 Rusty quartz veins	N
129	BBE-f17-43b	Fig No 9 /Area A	Float	609099	5829579	1 Rusty quartz veins	N
130	BBE-f17-44	Fig No 10 /Area B	Float	609244	5829599	1 Rusty quartz veins	N
131	BBE-f17-44a	Fig No 10 /Area B	Float	609246	5829597	1 Rusty quartz veins	N

Table No. 2
Black Bear East Rock Sample Coordinates and Descriptions

XRF No.	Field No.	Fig. No. / Area	Type	Easting (X)	Northing (Y)	XRF Target and Description and Comment	Magnetic
132	BBE-f17-44b	Fig No 10 /Area B	Float	609248	5829595	1 Rusty quartz veins	N
133	BBE-f17-45	Fig No 10 /Area B	Float	609347	5829642	1 Rusty quartz veins	N
134	BBE-f17-45a	Fig No 10 /Area B	Float	609349	5829640	1 Rusty quartz veins	N
135	BBE-f17-45b	Fig No 10 /Area B	Float	609351	5829638	1 Rusty quartz veins	N
136	BBE-f17-46	Fig No 10 /Area B	Float	609468	5829727	1 Rusty quartz veins	N
137	BBE-f17-46a	Fig No 10 /Area B	Float	609470	5829725	1 Rusty quartz veins	N
138	BBE-f17-46b	Fig No 10 /Area B	Float	609472	5829723	1 Rusty quartz veins	N
139	BBE-f17-47	Fig No 9 /Area A	Float	609026	5830317	1 Quartz veinlets in siltstone.	N
140	BBE-f17-47a	Fig No 9 /Area A	Float	609028	5830315	1 Quartz veinlets in siltstone.	N
141	BBE-f17-47b	Fig No 9 /Area A	Float	609030	5830313	1 Quartz veinlets in siltstone.	N
142	BBE-f17-48	Fig No 9 /Area A	Float	609021	5830393	1 Quartz veinlets in siltstone.	N
143	BBE-f17-48a	Fig No 9 /Area A	Float	609023	5830391	1 Quartz veinlets in siltstone.	N
144	BBE-f17-48b	Fig No 9 /Area A	Float	609025	5830389	1 Quartz veinlets in siltstone.	N
145	BBE-f17-49	Fig No 9 /Area A	Float	609076	5830439	1 Quartz veinlets in siltstone.	N
146	BBE-f17-49a	Fig No 9 /Area A	Float	609078	5830437	1 Quartz veinlets in siltstone.	N
147	BBE-f17-49b	Fig No 9 /Area A	Float	609080	5830435	1 Quartz veinlets in siltstone.	N
148	BBE-f17-50	Fig No 9 /Area A	Float	609138	5830461	1 Quartz veinlets in siltstone.	N
149	BBE-f17-50a	Fig No 9 /Area A	Float	609140	5830459	1 Quartz veinlets in siltstone.	N
150	BBE-f17-50b	Fig No 9 /Area A	Float	609142	5830457	1 Quartz veinlets in siltstone.	N
151	BBE-f17-51	Fig No 10 /Area B	Float	609195	5830495	1 Quartz veinlets in siltstone.	N
152	BBE-f17-51a	Fig No 10 /Area B	Float	609197	5830493	1 Quartz veinlets in siltstone.	N
153	BBE-f17-51b	Fig No 10 /Area B	Float	609199	5830491	1 Quartz veinlets in siltstone.	N
154	BBE-f17-52	Fig No 10 /Area B	Float	609253	5830479	1 Quartz veinlets in siltstone.	N
155	BBE-f17-52a	Fig No 10 /Area B	Float	609255	5830477	1 Quartz veinlets in siltstone.	N
156	BBE-f17-52b	Fig No 10 /Area B	Float	609257	5830475	1 Quartz veinlets in siltstone.	N
157	BBE-f17-53	Fig No 10 /Area B	Float	609198	5830382	1 Quartz veinlets in siltstone.	N
158	BBE-f17-53a	Fig No 10 /Area B	Float	609200	5830380	1 Quartz veinlets in siltstone.	N
159	BBE-f17-53b	Fig No 10 /Area B	Float	609202	5830378	1 Quartz veinlets in siltstone.	N
160	BBE-f17-54	Fig No 10 /Area B	Float	609169	5830227	1 Quartz veinlets in siltstone.	N
161	BBE-f17-54a	Fig No 10 /Area B	Float	609171	5830225	1 Quartz veinlets in siltstone.	N
162	BBE-f17-54b	Fig No 10 /Area B	Float	609173	5830223	1 Quartz veinlets in siltstone.	N
163	BBE-f17-55	Fig No 10 /Area B	Float	609165	5830109	1 Quartz veinlets in siltstone.	N
164	BBE-f17-55a	Fig No 10 /Area B	Float	609167	5830107	1 Quartz veinlets in siltstone.	N
165	BBE-f17-55b	Fig No 10 /Area B	Float	609169	5830105	1 Quartz veinlets in siltstone.	N

Table No. 2
Black Bear East Rock Sample Coordinates and Descriptions

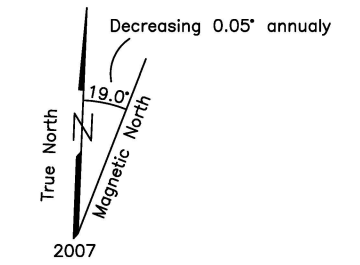
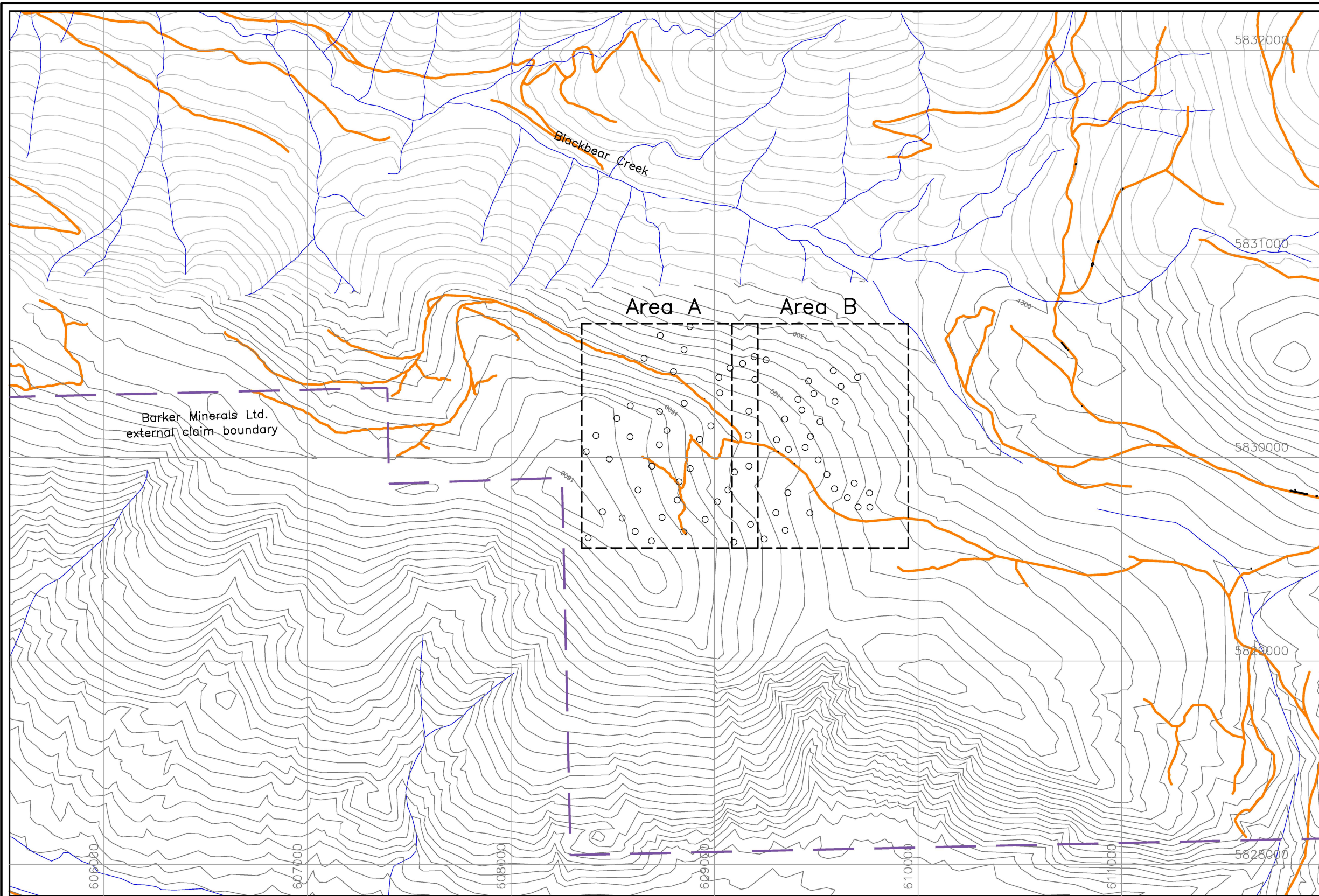
XRF No.	Field No.	Fig. No. / Area	Type	Easting (X)	Northing (Y)	XRF Target and Description and Comment	Magnetic
166	BBE-f17-56	Fig No 9 /Area A	Float	608654	5830487	3 Galena in qtz veinlets in siltstone.	N
167	BBE-f17-56a	Fig No 9 /Area A	Float	608656	5830485	3 Galena in qtz veinlets in siltstone.	N
168	BBE-f17-56b	Fig No 9 /Area A	Float	608658	5830483	3 Galena in qtz veinlets in siltstone.	N
169	BBE-f17-57	Fig No 9 /Area A	Float	608733	5830599	3 Galena in qtz veinlets in siltstone.	N
170	BBE-f17-57a	Fig No 9 /Area A	Float	608735	5830597	3 Galena in qtz veinlets in siltstone.	N
171	BBE-f17-57b	Fig No 9 /Area A	Float	608737	5830595	3 Galena in qtz veinlets in siltstone.	N
172	BBE-f17-58	Fig No 9 /Area A	Float	608879	5830643	3 Galena in qtz veinlets in siltstone.	N
173	BBE-f17-58a	Fig No 9 /Area A	Float	608881	5830641	3 Galena in qtz veinlets in siltstone.	N
174	BBE-f17-58b	Fig No 9 /Area A	Float	608883	5830639	3 Galena in qtz veinlets in siltstone.	N
175	BBE-f17-59	Fig No 9 /Area A	Float	608850	5830529	1 Rusty quartz veinlets in siltstone	N
176	BBE-f17-59a	Fig No 9 /Area A	Float	608852	5830527	1 Rusty quartz veinlets in siltstone	N
177	BBE-f17-59b	Fig No 9 /Area A	Float	608854	5830525	1 Rusty quartz veinlets in siltstone	N
178	BBE-f17-60	Fig No 9 /Area A	Float	608798	5830421	1 Rusty quartz veinlets in siltstone	N
179	BBE-f17-60a	Fig No 9 /Area A	Float	608800	5830419	1 Rusty quartz veinlets in siltstone	N
180	BBE-f17-60b	Fig No 9 /Area A	Float	608802	5830417	1 Rusty quartz veinlets in siltstone	N
181	BBE-f17-61	Fig No 9 /Area A	Float	608586	5830253	1 Rusty quartz veinlets in siltstone	N
182	BBE-f17-61a	Fig No 9 /Area A	Float	608588	5830251	1 Rusty quartz veinlets in siltstone	N
183	BBE-f17-61b	Fig No 9 /Area A	Float	608590	5830249	1 Rusty quartz veinlets in siltstone	N
184	BBE-f17-62	Fig No 9 /Area A	Float	608520	5830192	3 Galena in qtz veinlets in siltstone.	N
185	BBE-f17-62a	Fig No 9 /Area A	Float	608522	5830190	3 Galena in qtz veinlets in siltstone.	N
186	BBE-f17-62b	Fig No 9 /Area A	Float	608524	5830188	3 Galena in qtz veinlets in siltstone.	N
187	BBE-f17-63	Fig No 9 /Area A	Float	608417	5830107	3 Galena in qtz veinlets in siltstone.	N
188	BBE-f17-63a	Fig No 9 /Area A	Float	608419	5830105	3 Galena in qtz veinlets in siltstone.	N
189	BBE-f17-63b	Fig No 9 /Area A	Float	608421	5830103	3 Galena in qtz veinlets in siltstone.	N
190	BBE-f17-64	Fig No 9 /Area A	Float	608369	5830028	3 Galena in qtz veinlets in siltstone.	N
191	BBE-f17-64a	Fig No 9 /Area A	Float	608371	5830026	3 Galena in qtz veinlets in siltstone.	N
192	BBE-f17-64b	Fig No 9 /Area A	Float	608373	5830024	3 Galena in qtz veinlets in siltstone.	N
193	BBE-f17-65	Fig No 9 /Area A	Float	608483	5829992	3 Galena in qtz veinlets in siltstone.	N
194	BBE-f17-65a	Fig No 9 /Area A	Float	608485	5829990	3 Galena in qtz veinlets in siltstone.	N
195	BBE-f17-65b	Fig No 9 /Area A	Float	608487	5829988	3 Galena in qtz veinlets in siltstone.	N
196	BBE-f17-66	Fig No 9 /Area A	Float	608585	5830101	3 Galena in qtz veinlets in siltstone.	N
197	BBE-f17-66a	Fig No 9 /Area A	Float	608587	5830099	3 Galena in qtz veinlets in siltstone.	N
198	BBE-f17-66b	Fig No 9 /Area A	Float	608589	5830097	3 Galena in qtz veinlets in siltstone.	N
199	BBE-f17-67	Fig No 9 /Area A	Float	608730	5830225	3 Galena in qtz veinlets in siltstone.	N

Table No. 2
 Black Bear East Rock Sample Coordinates and Descriptions

<u>XRF No.</u>	<u>Field No.</u>	<u>Fig. No. / Area</u>	<u>Type</u>	<u>Easting (X)</u>	<u>Northing (Y)</u>	<u>XRF Target and Description and Comment</u>	<u>Magnetic</u>
200	BBE-f17-67a	Fig No 9 /Area A	Float	608732	5830223	3 Galena in qtz veinlets in siltstone.	N
201	BBE-f17-67b	Fig No 9 /Area A	Float	608734	5830221	1 Main mass of siltstone.	N
202	BBE-f17-68	Fig No 10 /Area B	Float	609763	5829755	3 Galena in quartz in siltstone.	N
203	BBE-f17-68a	Fig No 10 /Area B	Float	609765	5829753	3 Galena in quartz in siltstone.	N
204	BBE-f17-68b	Fig No 10 /Area B	Float	609767	5829751	3 Galena in quartz in siltstone.	N
205	BBE-f17-69	Fig No 10 /Area B	Float	609705	5829756	3 Galena in quartz in siltstone.	N
206	BBE-f17-69a	Fig No 10 /Area B	Float	609707	5829754	3 Galena in quartz in siltstone.	N
207	BBE-f17-69b	Fig No 10 /Area B	Float	609709	5829752	3 Galena in quartz in siltstone.	N
208	BBE-f17-70	Fig No 10 /Area B	Float	609761	5829825	3 Galena in quartz in siltstone.	N
209	BBE-f17-70a	Fig No 10 /Area B	Float	609763	5829823	3 Galena in quartz in siltstone.	N
210	BBE-f17-70b	Fig No 10 /Area B	Float	609765	5829821	3 Galena in quartz in siltstone.	N
211	BBE-f17-71	Fig No 10 /Area B	Float	609686	5829873	3 Galena in qtz veinlets in siltstone.	N
212	BBE-f17-71a	Fig No 10 /Area B	Float	609688	5829871	3 Galena in qtz veinlets in siltstone.	N
213	BBE-f17-71b	Fig No 10 /Area B	Float	609690	5829869	3 Galena in qtz veinlets in siltstone.	N
214	BBE-f17-72	Fig No 10 /Area B	Float	609652	5829802	3 Galena in qtz veinlets in siltstone.	N
215	BBE-f17-72a	Fig No 10 /Area B	Float	609654	5829800	1 Main mass of siltstone.	N
216	BBE-f17-72b	Fig No 10 /Area B	Float	609656	5829798	1 Main mass of siltstone.	N

APPENDIX G





Black Bear East Property Maps and XRF Data Tables

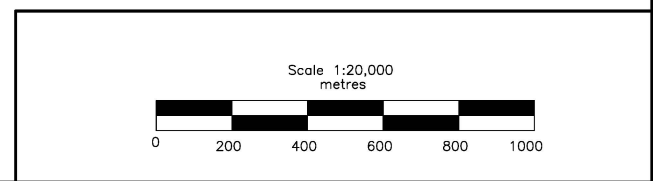


UTM Coordinate System
 Map Datum: NAD 83
 Zone: 10

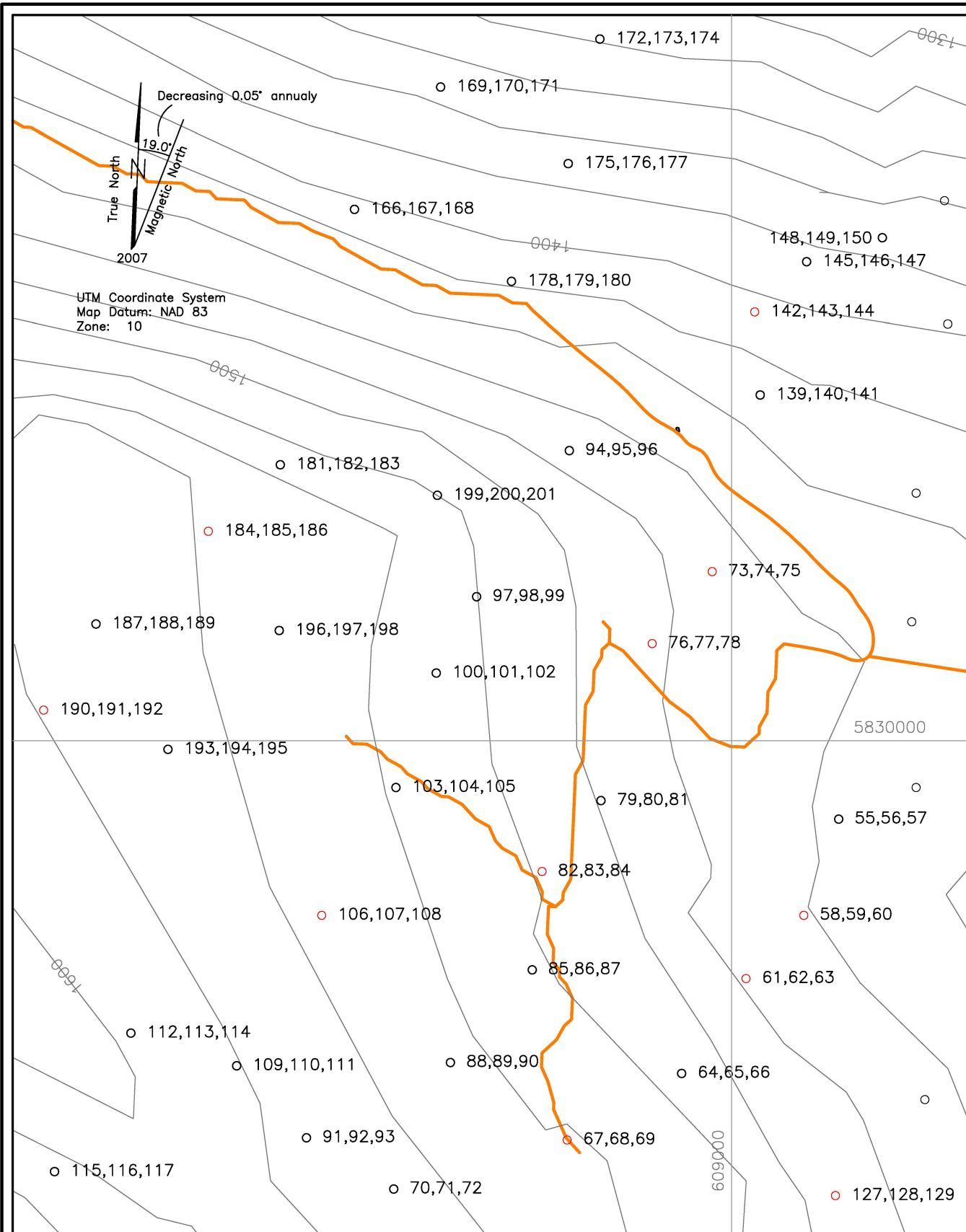
For Black Bear East Area A see Figure No. 9
 For Black Bear East Area B see Figure No. 10

LEGEND

-  Topographic Contour & Elevation
Contour interval 20 metres
-  Creek, Pond
-  Road
- 



BARKER MINERALS LTD.	
Cariboo Lake Prroperty	
Keymap	
of Black Bear East Areas A, B	
Cariboo Mining Division, B.C.	
Mapsheet: 93 A/11	Date: July 13, 2018
Fig.No. 8	



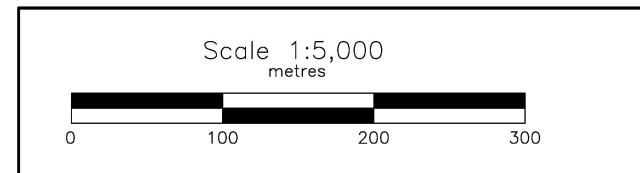
Cariboo Lake Property - Black Bear East Area B - Rock Samples XRF Results (ppm)

XRF No.	Pb	As	Zn	Cu	Ag	XRF No.	Pb	As	Zn	Cu	Ag
55	101127	5113	154			114	1083	131	31		
56	5053	213	84			115	103124	3091	1517	55	
57	121387	3849	73			116	170611	6864	226	53	
58	51446	1651				117	70620	1928	172		
59	108599	4066		105		127	29716	293	370		
60	170234	7008	464		1670	128	212975	8733	72724	142	1478
61	29552	1145	53			129	301057	13856	5889	109	2709
62	50941	1909	30			139	5771	439	135		
63	225941	9588	68	182	1426	140	2473	246	50		
64	213786	10453		106		141	28986	1522	19299	88	
65	115965	4645	62			142	291574	12776	360	102	1970
66	125966	5225	91	45		143	143407	6236	392	50	
67	248344	9887	955		1728	144	34193	1800	108	55	
68	144107	6610	78			145	50558	2610	77	41	
69	49648	1559	67			146	4601	251	580	128	
70	59996	2395	21			147	2987	403	154		
71	48625	1636	26			148	80692	3001	847		
72	21628	874	162	116		149	112940	4918			
73	200785	7839	83	64	2093	150	40935	1159	62		
74	51394	2311	185			166	19775	818	153		
75	166705	6142	164			167	8773	663	245		
76	101430	3232	3736			168	8257	354	1115	45	
77	339268	14042	414	163	2223	169	942	83	835		
78	21734	575	47			170	2119	293	225		
79	43812	1878	127			171	1237	159	132		
80	77646	3937	76			172	35655	249	1225		
81	97714	4105	42054	290		173	135020	2944	11462		
82	56590	1686	5190			174	48782	2010	527		
83	320498	13530	305		2449	175	41712	1073	1414	158	
84	11751	963	37	37		176	6926	524	494	36	
85	20107	517	209	32		177	1747	172	83		
86	43812	1595	23757	57		178	78252	2511	41		
87	5088	315	86	62		179	8983	703	211	56	
88	35768	1160	231	36		180	843	63	45		
89	26078	1198	664			181	89142	4030	16025		
90	43432	1907	62			182	25895	1122	35747		
91	89494	3816				183	11573	539	2443		
92	8278		59			184	215397	9550	51	49	1541
93	54898	1756	534			185	36568	900	30		
94	107138	3827	599			186	33471	1061	28		
95	3280	261	147	40		187	36727	1252	17		
96	19577	981	219			188	34123	764	39		
97	31518	1473	140			189	47557	3709	432		
98	122152	5667	2894	73		190	240021	8350	159		2494
99	9196	797	1076	21		191	60940	2152	82		
100	16627		283			192	2515	240	579	200	
101	28145	301	860			193	118882	3929	420		
102	15267	505	226			194	50280	919	1237		
103	2268	221	118			195	115544	4800	1168		
104	16498	454	149			196	48531	1472	305	150	
105	7220	268	120	18		197	37128	1337	186		
106	84167	2521	72		1956	198	2477	334	81		
107	3507	285	152			199	105019	3398	2863	52	
108	60528	2671	663	87		200	123273	5008	685		
109	78314	3003	42			201	369	57	73		
110	47545	1377	38								
111	52618	2008	20								
112	81402	1758	430	45							
113	23100	1434	785	63							

LEGEND

- Topographic Contour & Elevation
Contour interval 20 metres
- Creek, Pond
- Road
- 2017 Rock Sample Locations and Numbers

Results for Ag are coloured red.
Results below level of detection are not plotted
See Table No. 3 for XRF results.



BARKER MINERALS LTD.

Cariboo Lake Property
Black Bear East Area A
Rock Sample Numbers and
Pb, As, Zn, Cu, Ag Geochemistry
Cariboo Mining Division, B.C.

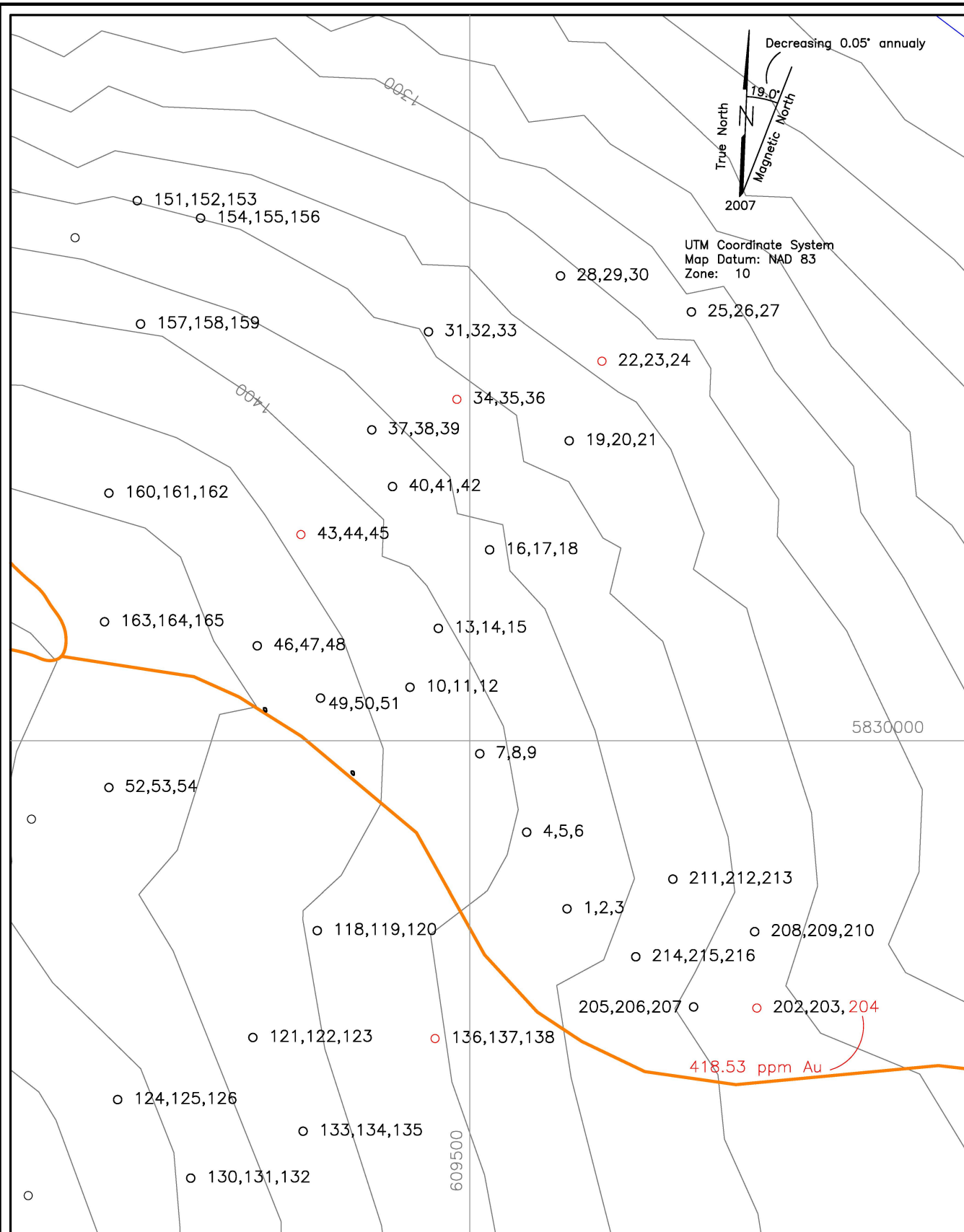
NTS Mapsheet: 93 A/11	Date: July 15, 2018
Fig.No. 9	

Table No. 3
Black Bear East Area A - Rock XRF Sampling Results

XRF No.	Fig. No./Area	Type	Units	Field No.	Mo	Zr	Sr	U	Rb	Th	Pb	Se	As	Hg	Au	Zn	W	Cu	Ni	Co	Fe	Mn	Sb	Sn	Cd	Ag	Nb	Y	Bi	Cr	V	Ti
101	Fig No 9 /Area A	float	ppm	BBE-f17-34a	12 < LOD	< LOD	< LOD	< LOD	16	28145	< LOD	301	< LOD	< LOD	860	< LOD	< LOD	< LOD	< LOD	61029	< LOD	< LOD	< LOD	< LOD	< LOD	44	< LOD	260	< LOD	< LOD	< LOD	
102	Fig No 9 /Area A	float	ppm	BBE-f17-34b	6 < LOD	< LOD	< LOD	4	< LOD	15267	26	505	< LOD	< LOD	226	143	< LOD	< LOD	< LOD	20274	< LOD	29	< LOD	< LOD	< LOD	25	< LOD	225	< LOD	< LOD	< LOD	
103	Fig No 9 /Area A	float	ppm	BBE-f17-35	18 < LOD	< LOD	< LOD	2	< LOD	2268	23	221	< LOD	< LOD	118	< LOD	< LOD	< LOD	< LOD	9005	72	33	24	< LOD	< LOD	6	< LOD	62	< LOD	< LOD	< LOD	
104	Fig No 9 /Area A	float	ppm	BBE-f17-35a	7 < LOD	< LOD	< LOD	< LOD	< LOD	16498	26	454	< LOD	< LOD	149	140	< LOD	< LOD	< LOD	8045	< LOD	< LOD	< LOD	< LOD	< LOD	32	< LOD	< LOD	< LOD	< LOD	< LOD	
105	Fig No 9 /Area A	float	ppm	BBE-f17-35b	30 < LOD	< LOD	< LOD	< LOD	< LOD	7220	25	268	< LOD	< LOD	120	< LOD	18	< LOD	< LOD	7939	< LOD	< LOD	< LOD	< LOD	< LOD	9	< LOD	46	< LOD	< LOD	< LOD	
106	Fig No 9 /Area A	float	ppm	BBE-f17-36	< LOD	< LOD	< LOD	< LOD	< LOD	84167	433	2521	< LOD	< LOD	72	669	< LOD	< LOD	< LOD	4230	< LOD	378	503	< LOD	1956	181	< LOD	2028	< LOD	< LOD	< LOD	
107	Fig No 9 /Area A	float	ppm	BBE-f17-36a	< LOD	< LOD	< LOD	< LOD	< LOD	3507	< LOD	285	< LOD	< LOD	152	159	< LOD	< LOD	< LOD	9945	< LOD	< LOD	< LOD	< LOD	< LOD	5	< LOD	< LOD	< LOD	< LOD	< LOD	
108	Fig No 9 /Area A	float	ppm	BBE-f17-36b	< LOD	< LOD	19	< LOD	< LOD	60528	140	2671	< LOD	< LOD	663	630	87	< LOD	< LOD	55774	< LOD	210	233	< LOD	< LOD	109	< LOD	< LOD	< LOD	< LOD	< LOD	
109	Fig No 9 /Area A	float	ppm	BBE-f17-37	< LOD	< LOD	< LOD	< LOD	< LOD	78314	117	3003	< LOD	< LOD	42	544	< LOD	< LOD	< LOD	1337	< LOD	174	368	< LOD	< LOD	160	< LOD	< LOD	< LOD	< LOD	< LOD	
110	Fig No 9 /Area A	float	ppm	BBE-f17-37a	< LOD	< LOD	< LOD	< LOD	< LOD	47545	62	1377	< LOD	< LOD	38	436	< LOD	< LOD	< LOD	3006	< LOD	38	92	< LOD	< LOD	100	< LOD	< LOD	< LOD	< LOD	< LOD	
111	Fig No 9 /Area A	float	ppm	BBE-f17-37b	< LOD	< LOD	< LOD	< LOD	< LOD	52618	56	2008	< LOD	< LOD	20	518	< LOD	< LOD	< LOD	893	< LOD	57	120	< LOD	< LOD	104	< LOD	< LOD	< LOD	< LOD	< LOD	
112	Fig No 9 /Area A	float	ppm	BBE-f17-38	11 < LOD	< LOD	< LOD	< LOD	< LOD	81402	186	1758	< LOD	< LOD	430	677	45	< LOD	< LOD	36514	< LOD	115	247	< LOD	< LOD	155	< LOD	814	< LOD	< LOD	< LOD	
113	Fig No 9 /Area A	float	ppm	BBE-f17-38a	9 < LOD	< LOD	< LOD	< LOD	< LOD	23100	24	1434	< LOD	< LOD	785	426	63	< LOD	< LOD	15918	< LOD	< LOD	< LOD	< LOD	< LOD	45	< LOD	< LOD	< LOD	< LOD	< LOD	
114	Fig No 9 /Area A	float	ppm	BBE-f17-38b	< LOD	< LOD	< LOD	< LOD	< LOD	1083	< LOD	131	< LOD	< LOD	31	< LOD	< LOD	< LOD	< LOD	1772	< LOD	< LOD	< LOD	< LOD	< LOD	< LOD	< LOD	< LOD	< LOD	< LOD	< LOD	
115	Fig No 9 /Area A	float	ppm	BBE-f17-39	41 < LOD	< LOD	< LOD	< LOD	< LOD	103124	85	3091	< LOD	< LOD	1517	636	55	< LOD	< LOD	45091	< LOD	249	393	< LOD	< LOD	212	< LOD	181	< LOD	< LOD	< LOD	
116	Fig No 9 /Area A	float	ppm	BBE-f17-39a	14 < LOD	< LOD	< LOD	< LOD	< LOD	170611	163	6864	< LOD	< LOD	226	929	53	< LOD	< LOD	3737	< LOD	727	1092	< LOD	< LOD	376	< LOD	< LOD	< LOD	< LOD	< LOD	
117	Fig No 9 /Area A	float	ppm	BBE-f17-39b	9 < LOD	< LOD	< LOD	< LOD	< LOD	70620	< LOD	1928	< LOD	< LOD	172	478	< LOD	< LOD	< LOD	12483	< LOD	< LOD	119	< LOD	< LOD	149	< LOD	< LOD	< LOD	< LOD	< LOD	
127	Fig No 9 /Area A	float	ppm	BBE-f17-43	< LOD	< LOD	< LOD	< LOD	< LOD	29716	< LOD	293	< LOD	< LOD	370	< LOD	< LOD	< LOD	< LOD	16557	< LOD	< LOD	< LOD	< LOD	< LOD	41	< LOD	93	< LOD	< LOD	< LOD	
128	Fig No 9 /Area A	float	ppm	BBE-f17-43a	28 < LOD	< LOD	< LOD	< LOD	< LOD	212975	172	8733	< LOD	< LOD	72724	< LOD	142	< LOD	< LOD	20461	< LOD	870	1291	1069	1478	403	< LOD	1246	< LOD	< LOD	< LOD	
129	Fig No 9 /Area A	float	ppm	BBE-f17-43b	176 < LOD	< LOD	< LOD	< LOD	< LOD	301057	291	13856	< LOD	< LOD	5889	779	109	< LOD	< LOD	13314	< LOD	1725	2269	880	2709	582	< LOD	2830	< LOD	< LOD	< LOD	
139	Fig No 9 /Area A	float	ppm	BBE-f17-47	8 < LOD	< LOD	< LOD	< LOD	< LOD	5771	24	439	< LOD	< LOD	135	193	< LOD	< LOD	< LOD	32474	< LOD	< LOD	< LOD	< LOD	< LOD	8	< LOD	387	< LOD	< LOD	< LOD	
140	Fig No 9 /Area A	float	ppm	BBE-f17-47a	< LOD	< LOD	< LOD	< LOD	< LOD	2473	< LOD	246	< LOD	< LOD	50	< LOD	< LOD	< LOD	< LOD	12877	< LOD	< LOD	< LOD	< LOD	< LOD	< LOD	< LOD	62	< LOD	< LOD	< LOD	
141	Fig No 9 /Area A	float	ppm	BBE-f17-47b	< LOD	< LOD	< LOD	< LOD	< LOD	28986	82	1522	< LOD	< LOD	19299	< LOD	88	< LOD	< LOD	11342	< LOD	< LOD	< LOD	< LOD	< LOD	52	< LOD	354	< LOD	< LOD	< LOD	
142	Fig No 9 /Area A	float	ppm	BBE-f17-48	22 < LOD	< LOD	< LOD	< LOD	< LOD	291574	317	12776	< LOD	< LOD	360	720	102	151	< LOD	5930	< LOD	1633	2302	896	1970	597	< LOD	2102	< LOD	< LOD	< LOD	
143	Fig No 9 /Area A	float	ppm	BBE-f17-48a	< LOD	< LOD	< LOD	< LOD	< LOD	143407	107	6236	< LOD	< LOD	392	664	50	< LOD	< LOD	7516	< LOD	529	744	< LOD	< LOD	296	< LOD	458	< LOD	< LOD	< LOD	
144	Fig No 9 /Area A	float	ppm	BBE-f17-48b	< LOD	< LOD	< LOD	< LOD	< LOD	34193	16	1800	< LOD	< LOD	108	400	55	< LOD	< LOD	8915	< LOD	< LOD	< LOD	< LOD	< LOD	64	< LOD	106	< LOD	< LOD	< LOD	
145	Fig No 9 /Area A	float	ppm	BBE-f17-49	7 < LOD	< LOD	< LOD	< LOD	< LOD	50558	45	2610	< LOD	< LOD	77	478	41	< LOD	< LOD	3284	< LOD	< LOD	< LOD	< LOD	< LOD	96	< LOD	170	< LOD	< LOD	< LOD	
146	Fig No 9 /Area A	float	ppm	BBE-f17-49a	9 < LOD	7	< LOD	< LOD	< LOD	4601	< LOD	251	< LOD	< LOD	580	316	128	< LOD	< LOD	20346	< LOD	< LOD	< LOD	< LOD	< LOD	9	< LOD	< LOD	< LOD	< LOD	< LOD	
147	Fig No 9 /Area A	float	ppm	BBE-f17-49b	< LOD	< LOD	< LOD	< LOD	< LOD	2987	< LOD	403	< LOD	< LOD	154	< LOD	< LOD	< LOD	< LOD	11964	63	< LOD	< LOD	< LOD	< LOD	< LOD	< LOD	34	< LOD	< LOD	< LOD	
148	Fig No 9 /Area A	float	ppm	BBE-f17-50	16 < LOD	< LOD	< LOD	< LOD	< LOD	80692	90	3001	< LOD	< LOD	847	357	< LOD	< LOD	< LOD	7157	< LOD	185	324	< LOD	< LOD	167	< LOD	500	< LOD	< LOD	< LOD	
149	Fig No 9 /Area A	float	ppm	BBE-f17-50a	< LOD	< LOD	< LOD	< LOD	< LOD	112940	112	4918	< LOD	< LOD	< LOD	622	< LOD	< LOD	< LOD	1071	< LOD	335	584	< LOD	< LOD	231	< LOD	567	< LOD	< LOD	< LOD	
150	Fig No 9 /Area A	float	ppm	BBE-f17-50b	< LOD	< LOD	< LOD	< LOD	< LOD	40935	23	1159	< LOD	< LOD	62	363	< LOD	< LOD	< LOD	7192	< LOD	< LOD	< LOD	< LOD	< LOD	60	< LOD	141	< LOD	< LOD	< LOD	
166	Fig No 9 /Area A	float	ppm	BBE-f17-56	< LOD	< LOD	< LOD	< LOD	< LOD	19775	< LOD	818	< LOD	< LOD	153	236	< LOD	< LOD	< LOD	2677	< LOD	48	62	< LOD	< LOD	33	< LOD	< LOD	< LOD	< LOD	< LOD	
167	Fig No 9 /Area A	float	ppm	BBE-f17-56a	22 < LOD	< LOD	< LOD	6	< LOD	8773	< LOD	663	< LOD	< LOD	245	177	< LOD	< LOD	< LOD	14214	< LOD	< LOD	< LOD	< LOD	< LOD	16	< LOD	< LOD	< LOD	< LOD	< LOD	
168	Fig No 9 /Area A	float	ppm	BBE-f17-56b	26 < LOD	< LOD	< LOD	4	< LOD	8257	< LOD	354	< LOD	< LOD	1115	< LOD	45	121	< LOD	114667	448	67	42	< LOD	< LOD	5	< LOD	39	< LOD	< LOD	< LOD	
169	Fig No 9 /Area A	float	ppm	BBE-f17-57	< LOD	< LOD	< LOD	< LOD	< LOD	942	< LOD	83	< LOD	< LOD	835	< LOD	< LOD	< LOD	< LOD	10429	94	< LOD	< LOD	< LOD	< LOD	< LOD	< LOD	< LOD	< LOD	< LOD	< LOD	
170	Fig No 9 /Area A	float	ppm	BBE-f17-57a	14 < LOD	< LOD	< LOD	< LOD	< LOD	2119	13	293	< LOD	< LOD	225	< LOD	< LOD	< LOD	< LOD	10002	< LOD	< LOD	< LOD	< LOD	< LOD	< LOD	< LOD	25	< LOD	< LOD	< LOD	
171	Fig No 9 /Area A	float	ppm	BBE-f17-57b	11 < LOD	< LOD	< LOD	< LOD	< LOD	1237	< LOD	159	< LOD	< LOD	132	< LOD	< LOD	< LOD	< LOD	6667	< LOD	< LOD	< LOD	< LOD	< LOD	< LOD	< LOD	23	< LOD	< LOD	< LOD	
172	Fig No 9 /Area A	float	ppm	BBE-f17-58	13 < LOD	< LOD	< LOD	< LOD	< LOD	35655	29	249	< LOD	< LOD	1225	226	< LOD	< LOD	< LOD	8432	< LOD	< LOD	< LOD	< LOD	< LOD	64	< LOD	127	< LOD	< LOD	< LOD	
173	Fig No 9 /Area A	float	ppm	BBE-f17-58a	179 < LOD	< LOD	< LOD	< LOD	< LOD	135020	92	2944	< LOD	< LOD	11462	< LOD	< LOD	< LOD	< LOD	35979	2586	364	608	< LOD	< LOD	285	< LOD	286	< LOD	< LOD	< LOD	
174	Fig No 9 /Area A	float	ppm	BBE-f17-58b	6 < LOD	< LOD	< LOD	< LOD	< LOD	48782	37	2010	< LOD	< LOD	527	410	< LOD	< LOD	< LOD	5799	< LOD	< LOD	98	< LOD	< LOD	91	< LOD	194	< LOD	< LOD	< LOD	
175	Fig No 9 /Area A	float	ppm	BBE-f17-59	167 < LOD	< LOD	25	15	< LOD	41712	< LOD	1073	< LOD	< LOD	1414	259	158	230	< LOD	180687	3056	396	443	< LOD	< LOD	22	< LOD	195	< LOD	< LOD	< LOD	
176	Fig No 9 /Area A	float	ppm	BBE-f17-59a	5 < LOD	< LOD	< LOD	< LOD	< LOD	6926	15	524	< LOD	< LOD	494	< LOD	36	< LOD	< LOD	31937	1273	< LOD	< LOD	< LOD	< LOD	8	< LOD	287	< LOD	< LOD	< LOD	
177	Fig No 9 /Area A	float	ppm	BBE-f17-59b	< LOD	< LOD	< LOD	< LOD	< LOD	1747	< LOD	172	< LOD	< LOD	83	< LOD	< LOD	< LOD	< LOD	3084	< LOD	< LOD	< LOD	< LOD	< LOD	< LOD	< LOD	< LOD	< LOD	< LOD	< LOD	
178	Fig No 9 /Area A	float	ppm	BBE-f17-60	33 < LOD	< LOD	< LOD	< LOD	< LOD	78252																						

Table No. 3
Black Bear East Area A - Rock XRF Sampling Results

XRF No.	Fig. No./Area	Type	Units	Field No.	Mo	Zr	Sr	U	Rb	Th	Pb	Se	As	Hg	Au	Zn	W	Cu	Ni	Co	Fe	Mn	Sb	Sn	Cd	Ag	Nb	Y	Bi	Cr	V	Ti	
182	Fig No 9 /Area A	float	ppm	BBE-f17-61a	8	< LOD	< LOD	< LOD	< LOD	< LOD	25895	45	1122	< LOD	< LOD	35747	< LOD	< LOD	< LOD	< LOD	39581	< LOD	< LOD	< LOD	< LOD	< LOD	42	< LOD	252	< LOD	< LOD	< LOD	
183	Fig No 9 /Area A	float	ppm	BBE-f17-61b	< LOD	< LOD	< LOD	< LOD	< LOD	< LOD	11573	< LOD	539	< LOD	< LOD	2443	59	< LOD	< LOD	< LOD	4156	< LOD	< LOD	< LOD	< LOD	< LOD	20	< LOD	< LOD	< LOD	< LOD	< LOD	
184	Fig No 9 /Area A	float	ppm	BBE-f17-62	< LOD	< LOD	< LOD	< LOD	< LOD	< LOD	215397	238	9550	< LOD	< LOD	51	820	49	< LOD	< LOD	1225	< LOD	1082	1462	497	1541	430	< LOD	1468	< LOD	< LOD	< LOD	
185	Fig No 9 /Area A	float	ppm	BBE-f17-62a	< LOD	< LOD	< LOD	< LOD	< LOD	< LOD	36568	26	900	< LOD	< LOD	30	342	< LOD	< LOD	< LOD	2595	< LOD	< LOD	< LOD	< LOD	< LOD	71	< LOD	150	< LOD	< LOD	< LOD	
186	Fig No 9 /Area A	float	ppm	BBE-f17-62b	< LOD	< LOD	< LOD	< LOD	< LOD	< LOD	33471	26	1061	< LOD	< LOD	28	325	< LOD	< LOD	< LOD	2838	< LOD	< LOD	< LOD	< LOD	< LOD	69	< LOD	196	< LOD	< LOD	< LOD	
187	Fig No 9 /Area A	float	ppm	BBE-f17-63	< LOD	< LOD	< LOD	< LOD	< LOD	< LOD	36727	23	1252	< LOD	< LOD	17	425	< LOD	< LOD	< LOD	838	< LOD	< LOD	< LOD	< LOD	< LOD	74	< LOD	143	< LOD	< LOD	< LOD	
188	Fig No 9 /Area A	float	ppm	BBE-f17-63a	6	< LOD	< LOD	< LOD	< LOD	< LOD	34123	14	764	< LOD	< LOD	39	409	< LOD	< LOD	< LOD	7955	< LOD	< LOD	< LOD	< LOD	< LOD	55	< LOD	182	< LOD	< LOD	< LOD	
189	Fig No 9 /Area A	float	ppm	BBE-f17-63b	< LOD	< LOD	< LOD	< LOD	< LOD	< LOD	47557	38	3709	< LOD	< LOD	432	594	< LOD	< LOD	< LOD	829	< LOD	180	253	< LOD	< LOD	82	< LOD	< LOD	< LOD	< LOD	< LOD	
190	Fig No 9 /Area A	float	ppm	BBE-f17-64	69	< LOD	< LOD	< LOD	< LOD	< LOD	240021	395	8350	< LOD	< LOD	159	906	< LOD	167	< LOD	5228	< LOD	1089	1921	803	2494	539	< LOD	1660	< LOD	< LOD	< LOD	
191	Fig No 9 /Area A	float	ppm	BBE-f17-64a	19	< LOD	< LOD	< LOD	< LOD	< LOD	60940	49	2152	< LOD	< LOD	82	502	< LOD	< LOD	< LOD	6867	< LOD	82	208	< LOD	< LOD	123	< LOD	< LOD	< LOD	< LOD	< LOD	
192	Fig No 9 /Area A	float	ppm	BBE-f17-64b	10	< LOD	10	< LOD	< LOD	22	2515	< LOD	240	< LOD	< LOD	579	< LOD	200	< LOD	< LOD	16286	< LOD	< LOD	< LOD	< LOD	< LOD	10	< LOD	< LOD	< LOD	< LOD	< LOD	
193	Fig No 9 /Area A	float	ppm	BBE-f17-65	957	< LOD	< LOD	< LOD	< LOD	< LOD	118882	184	3929	< LOD	< LOD	420	855	< LOD	< LOD	< LOD	25782	< LOD	479	766	< LOD	< LOD	241	< LOD	722	< LOD	< LOD	< LOD	
194	Fig No 9 /Area A	float	ppm	BBE-f17-65a	133	< LOD	< LOD	< LOD	< LOD	< LOD	50280	60	919	< LOD	< LOD	1237	492	< LOD	< LOD	< LOD	14496	< LOD	< LOD	< LOD	< LOD	< LOD	93	< LOD	< LOD	< LOD	< LOD	< LOD	
195	Fig No 9 /Area A	float	ppm	BBE-f17-65b	308	< LOD	< LOD	< LOD	< LOD	< LOD	115544	135	4800	< LOD	< LOD	1168	730	< LOD	< LOD	< LOD	20857	< LOD	396	656	< LOD	< LOD	228	< LOD	247	< LOD	< LOD	< LOD	
196	Fig No 9 /Area A	float	ppm	BBE-f17-66	64	< LOD	< LOD	< LOD	< LOD	< LOD	48531	79	1472	< LOD	< LOD	305	413	150	< LOD	< LOD	87255	< LOD	165	206	< LOD	< LOD	76	< LOD	783	< LOD	< LOD	< LOD	
197	Fig No 9 /Area A	float	ppm	BBE-f17-66a	5	< LOD	< LOD	< LOD	< LOD	< LOD	37128	< LOD	1337	< LOD	< LOD	186	354	< LOD	< LOD	< LOD	15769	< LOD	100	131	< LOD	< LOD	68	< LOD	< LOD	< LOD	< LOD	< LOD	
198	Fig No 9 /Area A	float	ppm	BBE-f17-66b	< LOD	< LOD	< LOD	< LOD	< LOD	< LOD	2477	< LOD	334	< LOD	< LOD	81	< LOD	< LOD	< LOD	< LOD	7255	< LOD	< LOD	< LOD	< LOD	< LOD	3	< LOD	< LOD	< LOD	< LOD	< LOD	
199	Fig No 9 /Area A	float	ppm	BBE-f17-67	11	< LOD	< LOD	< LOD	< LOD	< LOD	105019	36	3398	< LOD	< LOD	2863	495	52	< LOD	< LOD	14737	< LOD	223	439	< LOD	< LOD	215	< LOD	191	< LOD	< LOD	< LOD	
200	Fig No 9 /Area A	float	ppm	BBE-f17-67a	< LOD	< LOD	< LOD	< LOD	< LOD	< LOD	123273	64	5008	< LOD	< LOD	685	820	< LOD	< LOD	< LOD	22058	< LOD	429	643	< LOD	< LOD	246	< LOD	636	< LOD	< LOD	< LOD	
201	Fig No 9 /Area A	float	ppm	BBE-f17-67b	6	< LOD	< LOD	< LOD	< LOD	< LOD	369	< LOD	57	< LOD	< LOD	73	< LOD	< LOD	< LOD	< LOD	4261	< LOD	< LOD	< LOD	< LOD	< LOD	< LOD	< LOD	< LOD	19	< LOD	< LOD	< LOD



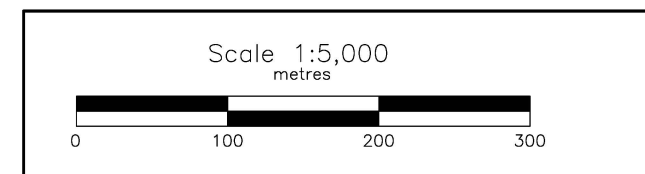
Cariboo Lake Property - Black Bear East Area B - Rock Samples XRF Results (ppm)

XRF No.	Pb	As	Zn	Cu	Ag	XRF No.	Pb	As	Zn	Cu	Ag	Au
1	5771	283	75			130	156435	8744	207680	181		
2	32193		1122			131	131218	4548	96237	91		
3	36990	1172				132	95631	5096	267369	452		
4	12344	528	120			133	48514	1591	55			
5	21531	259	505			134	2495	163	118			
6	9748	429	164			135	67524	3229	481	55		
7	28865	508	560			136	70377	3005				
8	12185	712	617	42		137	324660	12432	81	164	2362	
9	43715	2136	104	69		138	2888	223	27	26		
10	10352	649	62			151	13893	417	693			
11	64570	3081	101			152	63694	1289	3185			
12	46165	1599	33	361		153	7913	673	2411	89		
13	71096	2243	413			154	100690	4190	72			
14	162157	7488	40			155	17919	165	113			
15	31418	1261	329			156	40005	1286	56			
16	237301	8233	1785	90		157	84773	4930	172740			
17	1537	107	197	123		158	5218		827			
18	20262	710	4773	255		159	5200	668	590	65		
19	158702	4993	94055			160	10980	216	721	55		
20	13593	166	11999			161	56507	2909	349			
21	70935	3516	700	58		162	73417	1822	2216	148		
22	274795	10424	496	100	7404	163	62803	3041	15586			
23	73591	3046	995			164	3516		426	84		
24	107110	5164	43	56		165	60616	2444	31357	42		
25	6424	563	257	20		202	266585	11173	587		2146	
26	54893	1946	98			203	171253	5768	237	108		
27	11069	488	110			204	41550	1699	386			418.53
28	1236	56	139	20		205	43619	1276	57			
29	12512	603	201	24		206	21082	1282	91			
30	41963	1204	1140			207	8945	491	238			
31	722	105	2346	20		208	31178	919	221	34		
32	2201	81	1432			209	139620	5794	623	86		
33	5794	640	37407	88		210	28997	753	58			
34	34644	414	30			211	18892	875	126			
35	354046	15765	113		3182	212	58499	1907				
36	32387	1054	270			213	2273	169	154			
37	161237	6902	344	45		214	8538	192	106			
38	3195	251	74			215	43		76			
39	14117	396	22			216	84	35	112			
40	1217	217	36									
41	966	152	253	37								
42	7258	464	282	47								
43	14924	838	200									
44	283150	11595	358		1709							
45	52653	2545	24	53								
46	233255	8385	1017	69								
47	156007	7059	129	83								
48	153058	6071	87	79								
49	60446	2072	414									
50	28969		1061	66								
51	48384	285	1339									
52	557	69	91									
53	3435	319	961	49								
54	1027	45	217									
118	107374	4606		42								
119	39866	1275	38	54								
120	17925		422									
121	13886	247	173	25								
122	128029	5768	1661									
123	7138		103									
124	45005	1472										
125	24513	935	142									
126	61235	2613	311									

LEGEND

- Topographic Contour & Elevation
Contour interval 20 metres
- Creek, Pond
- Road
- 2017 Rock Sample Locations and Numbers**

Results for Ag and Au are coloured red.
Results below level of detection are not plotted.
See Table No. 4 for XRF results.



BARKER MINERALS LTD.	
Cariboo Lake Property Black Bear East Area B Rock Sample Numbers and Pb, As, Zn, Cu, Ag Geochemistry Cariboo Mining Division, B.C.	
NTS Mapsheet: 93 A/11	Date: July 15, 2018
Fig.No. 10	

Table No. 4
Black Bear East Area B - Rock XRF Sampling Results

XRF No.	Fig. No./Area	Type	Units	Field No.	Mo	Zr	Sr	U	Rb	Th	Pb	Se	As	Hg	Au	Zn	W	Cu	Ni	Co	Fe	Mn	Sb	Sn	Cd	Ag	Nb	Y	Bi	Cr	V	Ti	
47	Fig No 10 /Area B	float	ppm	BBE-f17-16a	14	< LOD	< LOD	< LOD	< LOD	< LOD	156007	< LOD	7059	< LOD	< LOD	129	882	83	98	< LOD	4150	< LOD	519	871	< LOD	< LOD	342	< LOD	457	< LOD	< LOD	< LOD	
48	Fig No 10 /Area B	float	ppm	BBE-f17-16b	< LOD	< LOD	< LOD	< LOD	< LOD	< LOD	153058	56	6071	< LOD	< LOD	87	828	79	< LOD	< LOD	6005	< LOD	512	847	< LOD	< LOD	315	< LOD	512	< LOD	< LOD	< LOD	
49	Fig No 10 /Area B	float	ppm	BBE-f17-17	< LOD	< LOD	< LOD	< LOD	< LOD	< LOD	60446	57	2072	< LOD	< LOD	414	650	< LOD	< LOD	< LOD	11385	< LOD	< LOD	130	< LOD	< LOD	119	< LOD	243	< LOD	< LOD	< LOD	
50	Fig No 10 /Area B	float	ppm	BBE-f17-17a	52	< LOD	< LOD	< LOD	< LOD	< LOD	28969	< LOD	< LOD	< LOD	< LOD	1061	360	66	< LOD	< LOD	141470	< LOD	< LOD	< LOD	< LOD	< LOD	21	< LOD	399	< LOD	< LOD	< LOD	
51	Fig No 10 /Area B	float	ppm	BBE-f17-17b	122	< LOD	< LOD	< LOD	19	< LOD	48384	47	285	< LOD	< LOD	1339	539	< LOD	< LOD	< LOD	162692	< LOD	79	196	< LOD	< LOD	52	< LOD	861	< LOD	< LOD	< LOD	
52	Fig No 10 /Area B	float	ppm	BBE-f17-18	< LOD	< LOD	< LOD	< LOD	< LOD	< LOD	557	< LOD	69	< LOD	< LOD	91	< LOD	< LOD	< LOD	< LOD	7803	75	< LOD	< LOD	< LOD	< LOD	< LOD	< LOD	< LOD	< LOD	95	< LOD	< LOD
53	Fig No 10 /Area B	float	ppm	BBE-f17-18a	< LOD	9	< LOD	< LOD	14	< LOD	3435	11	319	< LOD	< LOD	961	< LOD	49	< LOD	< LOD	55370	315	< LOD	< LOD	< LOD	< LOD	< LOD	< LOD	69	< LOD	< LOD	< LOD	
54	Fig No 10 /Area B	float	ppm	BBE-f17-18b	< LOD	< LOD	< LOD	< LOD	< LOD	< LOD	1027	< LOD	45	< LOD	< LOD	217	< LOD	< LOD	< LOD	< LOD	13218	< LOD	< LOD	< LOD	< LOD	< LOD	< LOD	< LOD	23	< LOD	< LOD	< LOD	
118	Fig No 10 /Area B	float	ppm	BBE-f17-40	< LOD	< LOD	< LOD	< LOD	< LOD	< LOD	107374	111	4606	< LOD	< LOD	< LOD	860	42	< LOD	< LOD	2182	< LOD	310	502	< LOD	< LOD	224	< LOD	373	< LOD	< LOD	< LOD	
119	Fig No 10 /Area B	float	ppm	BBE-f17-40a	< LOD	< LOD	< LOD	< LOD	< LOD	< LOD	39866	33	1275	< LOD	< LOD	38	378	54	< LOD	< LOD	6310	< LOD	< LOD	< LOD	< LOD	< LOD	77	< LOD	82	< LOD	< LOD	< LOD	
120	Fig No 10 /Area B	float	ppm	BBE-f17-40b	5	< LOD	< LOD	< LOD	< LOD	16	17925	< LOD	< LOD	< LOD	< LOD	422	96	< LOD	< LOD	< LOD	5770	3040	< LOD	< LOD	< LOD	< LOD	19	< LOD	< LOD	< LOD	< LOD	< LOD	
121	Fig No 10 /Area B	float	ppm	BBE-f17-41	6	< LOD	< LOD	< LOD	< LOD	< LOD	13886	13	247	< LOD	< LOD	173	< LOD	25	< LOD	< LOD	16609	< LOD	< LOD	< LOD	< LOD	< LOD	17	< LOD	111	< LOD	< LOD	< LOD	
122	Fig No 10 /Area B	float	ppm	BBE-f17-41a	< LOD	< LOD	163	< LOD	< LOD	< LOD	128029	111	5768	< LOD	< LOD	1661	680	< LOD	189	< LOD	32787	< LOD	576	869	< LOD	< LOD	251	< LOD	< LOD	< LOD	< LOD	< LOD	
123	Fig No 10 /Area B	float	ppm	BBE-f17-41b	30	270	68	< LOD	67	14	7138	< LOD	< LOD	< LOD	< LOD	103	132	< LOD	< LOD	< LOD	5217	< LOD	< LOD	< LOD	< LOD	< LOD	29	< LOD	< LOD	< LOD	< LOD	< LOD	
124	Fig No 10 /Area B	float	ppm	BBE-f17-42	< LOD	< LOD	< LOD	< LOD	< LOD	< LOD	45005	38	1472	< LOD	< LOD	< LOD	486	< LOD	< LOD	< LOD	3629	< LOD	< LOD	84	< LOD	< LOD	92	< LOD	110	< LOD	< LOD	< LOD	
125	Fig No 10 /Area B	float	ppm	BBE-f17-42a	6	< LOD	< LOD	< LOD	< LOD	< LOD	24513	16	935	< LOD	< LOD	142	283	< LOD	< LOD	< LOD	7354	< LOD	< LOD	< LOD	< LOD	< LOD	49	< LOD	187	< LOD	< LOD	< LOD	
126	Fig No 10 /Area B	float	ppm	BBE-f17-42b	10	< LOD	< LOD	< LOD	< LOD	< LOD	61235	36	2613	< LOD	< LOD	311	587	< LOD	< LOD	< LOD	17237	< LOD	67	188	< LOD	< LOD	124	< LOD	225	< LOD	< LOD	< LOD	
130	Fig No 10 /Area B	float	ppm	BBE-f17-44	27	< LOD	< LOD	< LOD	< LOD	< LOD	156435	84	8744	< LOD	< LOD	207680	< LOD	181	< LOD	< LOD	28785	< LOD	483	661	2801	< LOD	259	< LOD	< LOD	< LOD	< LOD	< LOD	
131	Fig No 10 /Area B	float	ppm	BBE-f17-44a	22	< LOD	< LOD	< LOD	< LOD	< LOD	131218	173	4548	< LOD	< LOD	96237	< LOD	91	< LOD	< LOD	21778	< LOD	393	577	1015	< LOD	237	< LOD	< LOD	< LOD	< LOD	< LOD	
132	Fig No 10 /Area B	float	ppm	BBE-f17-44b	43	< LOD	< LOD	< LOD	< LOD	< LOD	95631	98	5096	< LOD	< LOD	267369	< LOD	452	< LOD	< LOD	27981	< LOD	249	278	3121	< LOD	142	< LOD	< LOD	< LOD	< LOD	< LOD	
133	Fig No 10 /Area B	float	ppm	BBE-f17-45	< LOD	< LOD	< LOD	< LOD	< LOD	< LOD	48514	59	1591	< LOD	< LOD	55	465	< LOD	< LOD	< LOD	1322	< LOD	< LOD	< LOD	< LOD	< LOD	95	< LOD	74	< LOD	< LOD	< LOD	
134	Fig No 10 /Area B	float	ppm	BBE-f17-45a	< LOD	< LOD	< LOD	< LOD	< LOD	< LOD	2495	< LOD	163	< LOD	< LOD	118	< LOD	< LOD	< LOD	< LOD	3913	< LOD	< LOD	< LOD	< LOD	< LOD	3	< LOD	< LOD	< LOD	< LOD	< LOD	
135	Fig No 10 /Area B	float	ppm	BBE-f17-45b	8	< LOD	< LOD	< LOD	< LOD	< LOD	67524	32	3229	< LOD	< LOD	481	404	55	< LOD	< LOD	44273	< LOD	149	276	< LOD	< LOD	108	< LOD	284	< LOD	< LOD	< LOD	
136	Fig No 10 /Area B	float	ppm	BBE-f17-46	< LOD	< LOD	< LOD	< LOD	< LOD	< LOD	70377	95	3005	< LOD	< LOD	< LOD	650	< LOD	< LOD	< LOD	2090	< LOD	157	251	< LOD	< LOD	144	< LOD	136	< LOD	< LOD	< LOD	
137	Fig No 10 /Area B	float	ppm	BBE-f17-46a	72	< LOD	< LOD	< LOD	< LOD	< LOD	324660	298	12432	< LOD	< LOD	81	825	164	267	< LOD	3874	< LOD	1924	2522	952	2362	692	< LOD	1391	< LOD	< LOD	< LOD	
138	Fig No 10 /Area B	float	ppm	BBE-f17-46b	< LOD	< LOD	< LOD	< LOD	< LOD	< LOD	2888	< LOD	223	< LOD	< LOD	27	< LOD	26	< LOD	< LOD	22076	< LOD	< LOD	< LOD	< LOD	< LOD	3	< LOD	162	< LOD	< LOD	< LOD	
151	Fig No 10 /Area B	float	ppm	BBE-f17-51	6	< LOD	< LOD	< LOD	4	< LOD	13893	14	417	< LOD	< LOD	693	< LOD	< LOD	< LOD	< LOD	9550	< LOD	85	79	< LOD	< LOD	28	< LOD	< LOD	< LOD	< LOD	< LOD	
152	Fig No 10 /Area B	float	ppm	BBE-f17-51a	13	< LOD	< LOD	< LOD	< LOD	< LOD	63694	31	1289	< LOD	< LOD	3185	416	< LOD	< LOD	< LOD	70358	8594	188	217	< LOD	< LOD	125	< LOD	128	< LOD	< LOD	< LOD	
153	Fig No 10 /Area B	float	ppm	BBE-f17-51b	30	< LOD	8	8	3	30	7913	< LOD	673	< LOD	< LOD	2411	< LOD	89	< LOD	< LOD	25733	< LOD	< LOD	< LOD	< LOD	< LOD	24	< LOD	< LOD	86	< LOD	899	
154	Fig No 10 /Area B	float	ppm	BBE-f17-52	23	< LOD	< LOD	< LOD	< LOD	< LOD	100690	78	4190	< LOD	< LOD	72	696	< LOD	< LOD	< LOD	4318	< LOD	292	548	< LOD	< LOD	202	< LOD	< LOD	< LOD	< LOD	< LOD	
155	Fig No 10 /Area B	float	ppm	BBE-f17-52a	< LOD	< LOD	< LOD	< LOD	< LOD	< LOD	17919	18	165	< LOD	< LOD	113	287	< LOD	< LOD	< LOD	5239	< LOD	< LOD	< LOD	< LOD	< LOD	30	< LOD	< LOD	< LOD	< LOD	< LOD	
156	Fig No 10 /Area B	float	ppm	BBE-f17-52b	6	< LOD	< LOD	< LOD	< LOD	< LOD	40005	17	1286	< LOD	< LOD	56	477	< LOD	< LOD	< LOD	17568	< LOD	< LOD	< LOD	< LOD	< LOD	74	< LOD	87	< LOD	< LOD	< LOD	
157	Fig No 10 /Area B	float	ppm	BBE-f17-53	44	< LOD	< LOD	< LOD	< LOD	< LOD	84773	84	4930	< LOD	< LOD	172740	1739	< LOD	< LOD	< LOD	31112	< LOD	265	252	1912	< LOD	147	< LOD	< LOD	< LOD	< LOD	< LOD	
158	Fig No 10 /Area B	float	ppm	BBE-f17-53a	< LOD	< LOD	< LOD	< LOD	< LOD	< LOD	5218	< LOD	< LOD	< LOD	< LOD	827	< LOD	< LOD	< LOD	< LOD	4423	< LOD	< LOD	< LOD	< LOD	< LOD	7	< LOD	< LOD	< LOD	< LOD	< LOD	
159	Fig No 10 /Area B	float	ppm	BBE-f17-53b	32	< LOD	< LOD	< LOD	3	< LOD	5200	17	668	< LOD	< LOD	590	< LOD	65	105	< LOD	62655	658	< LOD	< LOD	< LOD	< LOD	< LOD	< LOD	172	< LOD	< LOD	< LOD	
160	Fig No 10 /Area B	float	ppm	BBE-f17-54	9	< LOD	5	< LOD	< LOD	< LOD	10980	< LOD	216	< LOD	< LOD	721	172	55	< LOD	< LOD	8551	< LOD	< LOD	< LOD	< LOD	< LOD	21	< LOD	< LOD	< LOD	< LOD	< LOD	
161	Fig No 10 /Area B	float	ppm	BBE-f17-54a	< LOD	< LOD	< LOD	< LOD	< LOD	< LOD	56507	47	2909	< LOD	< LOD	349	497	< LOD	< LOD	< LOD	2296	< LOD	105	154	< LOD	< LOD	116	< LOD	< LOD	< LOD	< LOD	< LOD	
162	Fig No 10 /Area B	float	ppm	BBE-f17-54b	105	< LOD	< LOD	< LOD	18	< LOD	73417	< LOD	1822	< LOD	< LOD	2216	477	148	< LOD	< LOD	168965	< LOD	248	311	< LOD	< LOD	61	< LOD	< LOD	< LOD	< LOD	< LOD	
163	Fig No 10 /Area B	float	ppm	BBE-f17-55	< LOD	< LOD	< LOD	< LOD	< LOD	< LOD	62803	111	3041	< LOD	< LOD	15586	< LOD	< LOD	69	< LOD	3001	< LOD	208	289	< LOD	< LOD	122	< LOD	< LOD	< LOD	< LOD	< LOD	
164	Fig No 10 /Area B	float	ppm	BBE-f17-55a	8	< LOD	15	< LOD	< LOD	< LOD	3516	32	< LOD	< LOD	< LOD	426	< LOD	84	< LOD	< LOD	20940	< LOD	< LOD	< LOD	< LOD	< LOD	9	< LOD	< LOD	< LOD	< LOD	< LOD	
165	Fig No 10 /Area B	float	ppm	BBE-f17-55b	15	< LOD	< LOD	< LOD	< LOD	< LOD	60616	84	2444	< LOD	< LOD	31357	< LOD	42	< LOD	< LOD	7129	< LOD	137	160	< LOD	< LOD	113	< LOD	163	< LOD	< LOD	< LOD	
202	Fig No 10 /Area B	float	ppm	BBE-f17-68	997	< LOD	< LOD	< LOD	< LOD	< LOD	266585	314	11173	< LOD	< LOD	587	850	< LOD	< LOD	< LOD	56542	< LOD	1392	1916	623	2146	527	< LOD	1379	< LOD	< LOD	< LOD	
203	Fig No 10 /Area B	float	ppm	BBE-f17-68a	67	< LOD	< LOD	< LOD	< LOD	< LOD	171253	< LOD	5768	< LOD	< LOD	237	1051	108	275	< LOD	9237	< LOD	583	896	< LOD	< LOD	360	< LOD	< LOD	< LOD	< LOD	< LOD	
204	Fig No 10 /Area B	float	ppm	BBE-f17-68b	< LOD	< LOD	< LOD																										

Table No. 4
 Black Bear East Area B - Rock XRF Sampling Results

XRF No.	Fig. No./Area	Type	Units	Field No.	Mo	Zr	Sr	U	Rb	Th	Pb	Se	As	Hg	Au	Zn	W	Cu	Ni	Co	Fe	Mn	Sb	Sn	Cd	Ag	Nb	Y	Bi	Cr	V	Ti	
209	Fig No 10 /Area B	float	ppm	BBE-f17-70a	32	< LOD	< LOD	< LOD	< LOD	< LOD	139620	88	5794	< LOD	< LOD	623	761	86	< LOD	< LOD	31904	< LOD	557	768	< LOD	< LOD	268	< LOD	1736	< LOD	< LOD	< LOD	
210	Fig No 10 /Area B	float	ppm	BBE-f17-70b	< LOD	< LOD	< LOD	< LOD	< LOD	< LOD	28997	23	753	< LOD	< LOD	58	292	< LOD	< LOD	< LOD	3495	< LOD	< LOD	< LOD	< LOD	< LOD	56	< LOD	< LOD	< LOD	< LOD	< LOD	
211	Fig No 10 /Area B	float	ppm	BBE-f17-71	< LOD	< LOD	24	< LOD	< LOD	21	18892	< LOD	875	< LOD	< LOD	126	< LOD	< LOD	< LOD	< LOD	139352	< LOD	< LOD	< LOD	< LOD	< LOD	27	< LOD	< LOD	< LOD	< LOD	< LOD	
212	Fig No 10 /Area B	float	ppm	BBE-f17-71a	14	< LOD	< LOD	< LOD	< LOD	< LOD	58499	42	1907	< LOD	< LOD	< LOD	560	< LOD	< LOD	< LOD	9142	< LOD	< LOD	130	< LOD	< LOD	115	< LOD	< LOD	< LOD	< LOD	< LOD	
213	Fig No 10 /Area B	float	ppm	BBE-f17-71b	49	< LOD	< LOD	< LOD	< LOD	< LOD	2273	8	169	< LOD	< LOD	154	< LOD	< LOD	< LOD	< LOD	81516	140	< LOD	< LOD	< LOD	< LOD	< LOD	< LOD	26	< LOD	< LOD	< LOD	
214	Fig No 10 /Area B	float	ppm	BBE-f17-72	403	< LOD	252	< LOD	< LOD	< LOD	8538	< LOD	192	< LOD	< LOD	106	< LOD	< LOD	< LOD	< LOD	29448	3670	< LOD	< LOD	< LOD	< LOD	13	< LOD	< LOD	< LOD	< LOD	< LOD	
215	Fig No 10 /Area B	float	ppm	BBE-f17-72a	11	< LOD	188	< LOD	< LOD	< LOD	43	< LOD	< LOD	< LOD	< LOD	76	< LOD	< LOD	< LOD	< LOD	16968	2107	< LOD	< LOD	< LOD	< LOD	< LOD	< LOD	< LOD	< LOD	< LOD	< LOD	
216	Fig No 10 /Area B	float	ppm	BBE-f17-72b	25	< LOD	150	< LOD	< LOD	< LOD	84	< LOD	35	< LOD	< LOD	112	< LOD	< LOD	< LOD	< LOD	51123	1763	< LOD	< LOD	< LOD	< LOD	< LOD	< LOD	< LOD	< LOD	80	< LOD	< LOD