



ASSESSMENT REPORT TITLE PAGE AND SUMMARY

**TITLE OF REPORT: Geological & Geochemical Cariboo Lake Property
Unlikely and Keithley Area's, Cariboo Mining Division, British Columbia**

TOTAL COST: \$29,445.00

AUTHOR(S): Rein Turna

SIGNATURE(S): "SIGNED"

NOTICE OF WORK PERMIT NUMBER(S)/DATE(S): MX-10-155 & MX-10-228

**STATEMENT OF WORK EVENT NUMBER(S)/DATE(S): 5703376 – (October 21,
2017 to July 7, 2018)**

YEAR OF WORK: 2017 - 2018

PROPERTY NAME: Cariboo Lake Property, Unlikely and Keithley Area's

CLAIM NAME(S) (on which work was done)

FRK 3 & FRK 4

COMMODITIES SOUGHT: Copper, Lead, Zinc, Silver & Gold

MINERAL INVENTORY MINFILE NUMBER(S), IF KNOWN: N/K

MINING DIVISION: Cariboo

BCGS: 93A/11 & 93A/14

LATITUDE 52.73°

LONGITUDE -121.46°

UTM Zone 10 EASTING 604200 NORTHING 5843900

OWNER(S): Barker Minerals Ltd.

MAILING ADDRESS: 17970 Lacasse Rd., Prince George BC, V2K 5T4

OPERATOR(S) [who paid for the work]: Barker Minerals Ltd.

MAILING ADDRESS: 17970 Lacasse Rd., Prince George BC, V2K 5T4

**REPORT KEYWORDS (lithology, age, stratigraphy, structure, alteration, mineralization,
size and attitude do not use abbreviations or codes)**

Barkerville Terrane, Silver & Gold

**REFERENCES TO PREVIOUS ASSESSMENT WORK AND ASSESSMENT REPORT
NUMBERS**

**9669, 9677, 10252, 10264, 11620, 13154, 15420, 15804, 17696, 19354, 21930, 22599,
22642, 24662, 25752, 26003, 26504, 26805, 27125, 27655, 28248, 28978, 29740, 30764.**

TYPE OF WORK IN THIS REPORT	EXTENT OF WORK (in metric units)	ON WHICH CLAIMS	PROJECT COSTS APPORTIONED (incl. support)
GEOLOGICAL (scale, area)			
Ground, mapping	N/A		
Photo interpretation	N/A		
GEOPHYSICAL (line-kilometres)			
Ground	N/A		
Magnetic	N/A		
Electromagnetic	N/A		
Induced Polarization	N/A		
Radiometric	N/A		
Seismic	N/A		
Other	N/A		
Airborne	N/A		
GEOCHEMICAL (number of samples analysed for ...)			
Soil	N/A		
Silt	N/A		
Rock	166	1055652 1055653	\$17,994.17
Other	N/A		
DRILLING (total metres, number of holes, size, storage location)			
Core	N/A		
Non-core	N/A		
RELATED TECHNICAL			
Sampling / Assaying	148	1055652 1055653	\$11,450.83
Petrographic	N/A		
Mineralographic	N/A		
Metallurgic	N/A		
PROSPECTING (scale/area)	N/A		
PREPATORY / PHYSICAL			
Line/grid (km)	N/A		
Topo/Photogrammetric (scale, area)	N/A		
Legal Surveys (scale, area)	N/A		
Road, local access (km)/trail	N/A		
Trench (number/metres)	N/A		
Underground development (metres)	N/A		
Other	N/A		
			TOTAL COST
			\$29,445.00

**GEOLOGICAL & GEOCHEMICAL
ASSESSMENT REPORT**

on the

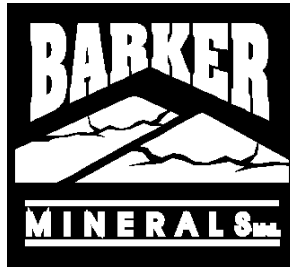
**Cariboo Lake Property
Unlikely & Keithley Area's**

Cariboo Mining Division, British Columbia

Work was concentrated on tenure no's. 1055652 & 1055653

The geographic coordinates of the approximate centre of the property are:
52.73° North Latitude and -121.46° West Longitude or
604200 E and 5843900 N UTM coordinates (NAD 83).

The relevant maps are: N.T.S. Map No's. 93A/11 & 93A/14



for

Barker Minerals Ltd.
17970 Lacasse Rd.
Prince George, B.C.
V2K 5T4

Prepared by:
Rein Turna

November 27, 2018

1.0 SUMMARY

Work performed in 2017 and 2018 on Barker Minerals Ltd.'s Cariboo Lake Property claims consisted of float rock sampling in the Unlikely and Keithley Areas. Altogether, 166 float rock samples were collected, 58 at the Unlikely and 108 at Keithley areas.

The best metal results in the Unlikely Area were in zinc and copper. The best metal results in the overall Keithley Area were in lead, arsenic and zinc. Two rock samples in Keithley Area A had gold values of **10.22 ppm Au** and **10.54 ppm Au**.

Maps and geochemical data for the work are presented in Appendix G.

TABLE OF CONTENTS

	Page
1.0 SUMMARY _____	i
2.0 INTRODUCTION _____	1
3.0 PROPERTY DESCRIPTION and LOCATION _____	1
4.0 MINERAL CLAIMS _____	2
5.0 PHYSIOGRAPHY and ACCESSIBILITY _____	3
6.0 HISTORY _____	5
6.1 History of Work Done at Unlikely – Keithley areas _____	5
6.1.1 Work done in 2014 _____	5
7.0 GEOLOGY _____	6
7.1 Regional Geology _____	6
Quesnel Terrane _____	8
Slide Mountain Terrane _____	9
Barkerville Terrane _____	9
Cariboo Terrane _____	10
Glaciation and Glacial Deposits _____	10
7.2 Geology at Cariboo Lake _____	11
7.3 Local Geology at Unlikely to Frank Creek _____	13
7.4 The “Unlikely” Showing _____	14
8.0 EXPLORATION PROGRAM - 2017 - 2018 _____	16
8.1 Sampling Method and Approach _____	16
8.2 Economic Targets and Work Done _____	16
Unlikely Area _____	16
Keithley Area _____	17
9.0 CONCLUSIONS and RECOMMENDATIONS _____	17

LIST of FIGURES

	Page
Figure No. 1 Main Property location in British Columbia _____	2
Figure No. 2 Barker Minerals Ltd. Mineral Claims _____	after pg. 2
Figure No. 3 Access Roads from Likely to several of Barker Minerals’ properties _____	4
Figure No. 4 Terrane Map of Southern British Columbia _____	6
Figure No. 5 Terrane Map of Cariboo Lake – Wells Area _____	7
Figure No. 6 Schematic Regional Structural Section _____	8
Figure No. 7 Geology and Stratigraphy of the Snowshoe Group _____	12
Figure No. 8 Geology of Unlikely - Frank Creek area _____	13
Figure No. 9 Satellite photo _____	14

Figure No. 10	Vertically-dipping east-west shear at Unlikely _____	15
Figure No. 11	Apparent drag folding adjacent to the shear at Unlikely _____	15
Figure No. 12	Keymap for Cariboo Lake Project Area _____	in Appendix G
Figure No. 13	Unlikely Area - Sample Nos., Zn, Cu Geochem _____	in Appendix G
Figure No. 14	Keithley Area A - Sample Nos., Pb, As, Zn Geochem _____	in Appendix G
Figure No. 15	Keithley Area B - Sample Nos., Pb, As, Zn Geochem _____	in Appendix G
Figure No. 16	Keithley Area C - Sample Nos., Pb, As, Zn Geochem _____	in Appendix G

LIST of TABLES

Table No. 1	Mineral Claims Details _____	pg. 2
Table No. 2	Cariboo Lake Project Sample Coordinates and Descriptions _____	in Appendix F
Table No. 3	Unlikely Area – XRF Rock Sampling Results _____	after Fig. No. 13
Table No. 4	Keithley Area A – XRF Rock Sampling Results _____	after Fig. No. 14
Table No. 5	Keithley Area B – XRF Rock Sampling Results _____	after Fig. No. 15
Table No. 6	Keithley Area C – XRF Rock Sampling Results _____	after Fig. No. 16

LIST of APPENDIXES

Appendix A	Glossary of Technical Terms and Abbreviations
Appendix B	Analytical Methods
Appendix C	References
Appendix D	Statements of Qualifications
Appendix E	Statement of Expenditures
Appendix F	Soil and Rock Samples Coordinates and Descriptions
Appendix G	Unlikely and Keithley Areas Geochem Maps and XRF Data Tables

2.0 INTRODUCTION

This report describes assessment work performed in 2017 and 2018 on Barker Minerals Ltd.'s Cariboo Lake Property contiguous group of mineral properties. The work was concentrated in the areas named Unlikely and Keithley on tenure nos. 1055652 and 1055653. Float rock samples were analyzed by X-ray fluorescence (XRF) for twenty-eight elements. The purpose was to add geochemical information to the existing database for the claim group and to identify potential mineralized lithologic horizons in an on-going mineral exploration program.

Ag	Silver	Cd	Cadmium	K	Potassium
As	Arsenic	Co	Cobalt	Pb	Lead
Au	Gold	Cr	Chromium	Sb	Antimony
Ba	Barium	Cu	Copper	Sn	Tin
Bi	Bismuth	Fe	Iron	Zn	Zinc

3.0 PROPERTY DESCRIPTION and LOCATION

The Cariboo Lake Property consists of contiguous claims listed in Table No. 1 Mineral Claims Details. The Cariboo Lake Property's location in British Columbia is indicated in Figure No. 1 – Cariboo Lake Property Location in British Columbia, and the mineral claims are outlined in Figure No. 2 – Barker Minerals Ltd. Mineral Claims. The mineral claims comprising the property are located generally in the area between Quesnel and Cariboo Lakes in the Cariboo Mining Division in British Columbia and are 100% owned by Barker Minerals Ltd. of Prince George, B.C. The Property is approximately 15 km northeast of the community of Likely and 90 km northeast the City of Williams Lake. The City of Prince George is 155 km to the north.

The 'Cariboo Lake Property' is labeled 'Main' or 'Peripheral Properties' in previous Barker Minerals reports. The terms 'Cariboo Lake, 'Main' and 'Peripheral' Properties may be sometimes used interchangeably in this report.

The geographic coordinates of the approximate centre of the property are:
52.73° North Latitude and -121.46° West Longitude or
604200 E and 5843900 N UTM coordinates (NAD 83).

The relevant maps are:

N.T.S. Map No. 93A/11 and 93A/14.

4.0 MINERAL CLAIMS

<u>Tenure Number</u>	<u>Owner No.</u>	<u>Owner</u>	<u>Status</u>	<u>Area (ha)</u>
1055650	140410	Barker Minerals Ltd. 100%	Good	274.04
1055651	140410	Barker Minerals Ltd. 100%	Good	2605.83
1055652	140410	Barker Minerals Ltd. 100%	Good	4693.66
1055653	140410	Barker Minerals Ltd. 100%	Good	4092.34
1055654	140410	Barker Minerals Ltd. 100%	Good	3718.88
107784	140410	Barker Minerals Ltd. 100%	Good	39.19

Total Area is **15,423.94 ha**

Table No. 1 – Mineral Claim Details, Barker Minerals Ltd. Cariboo Lake Property comprising the Frank Creek area and other projects.

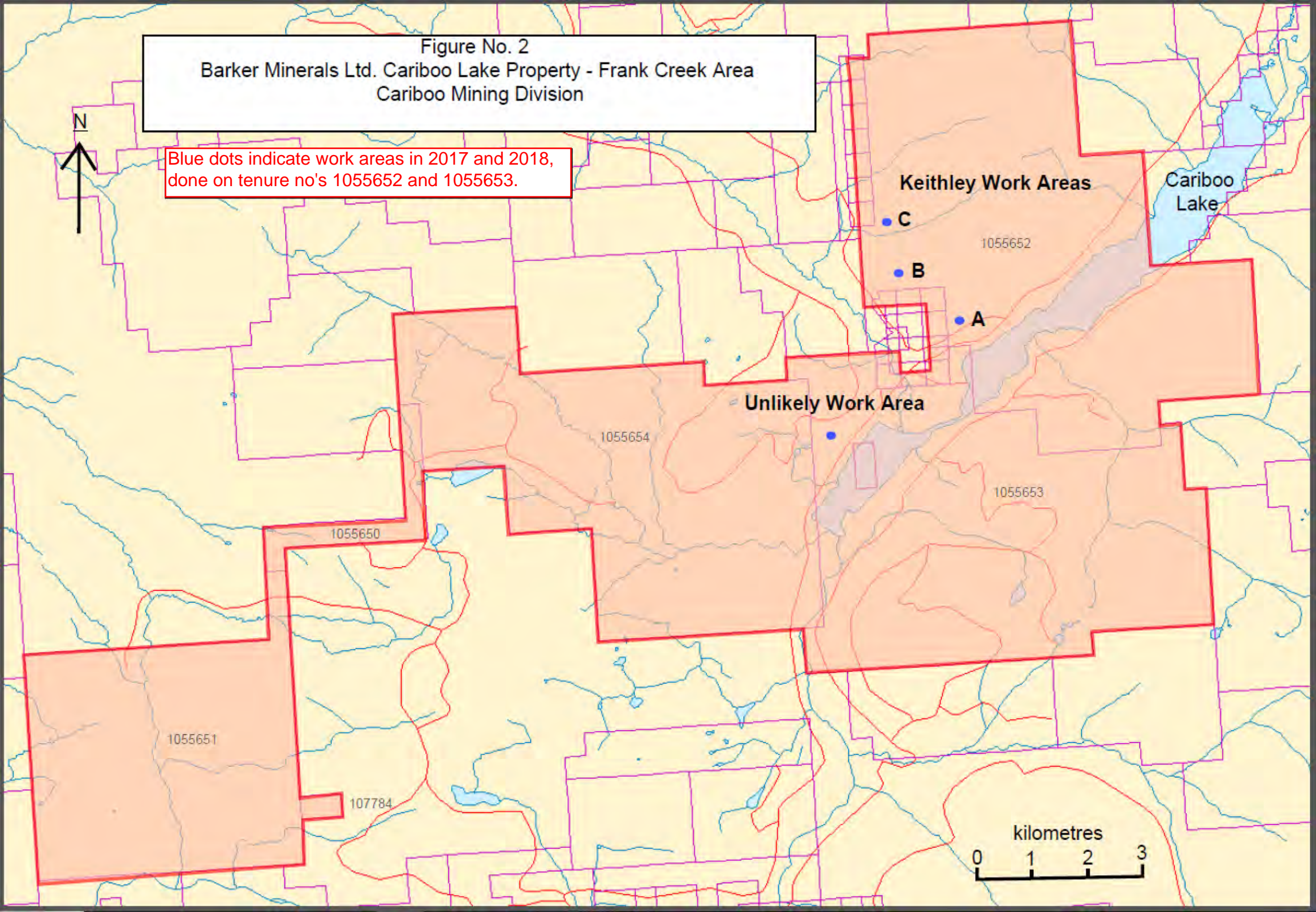


Figure No. 1 Provincial Location Map.

Figure No. 2, next page, illustrates the configuration of Barker Minerals' Cariboo Lake Property claims containing the Cariboo Lake Property work areas.

Figure No. 2
Barker Minerals Ltd. Cariboo Lake Property - Frank Creek Area
Cariboo Mining Division

Blue dots indicate work areas in 2017 and 2018,
done on tenure no's 1055652 and 1055653.



5.0 PHYSIOGRAPHY and ACCESSIBILITY

The following description in *italics*, is after McKinley, 2004:

The property is situated in the central part of the Quesnel Highland between the eastern edge of the Interior Plateau and the western foothills of the Columbia Mountains. This area contains rounded mountains that are transitional between the rolling plateaus to the west and the rugged Cariboo Mountains to the east. Pleistocene and Recent ice sheets flowed away from the high mountains to the east over these plateaus and down to the southwest (Cariboo River), west (Little River) and northeast (Quesnel Lake), carving U-shaped valleys. The elevation ranges from 700-1650 m.

Precipitation in the region is heavy, as rain in the summer and snow in the winter. Drainage is to the west via the Cariboo, Little and Quesnel Rivers to the Fraser River. Quesnel Lake, the main scenic and topographic feature in the region, is a deep, long, forked, glacier-carved lake with an outlet at 725 m elevation. Vegetation is old-growth spruce, fir, pine, hemlock and cedar forest in all but the alpine regions of the higher mountains (mainly above 1400 m elevation). Weldwood has been actively logging fir, spruce and pine in the area.

Access to the property is via gravel logging roads bearing northeast from Likely. Figure No. 3 shows access roads from Likely to Cariboo Lake and several of Barker's mineral properties.

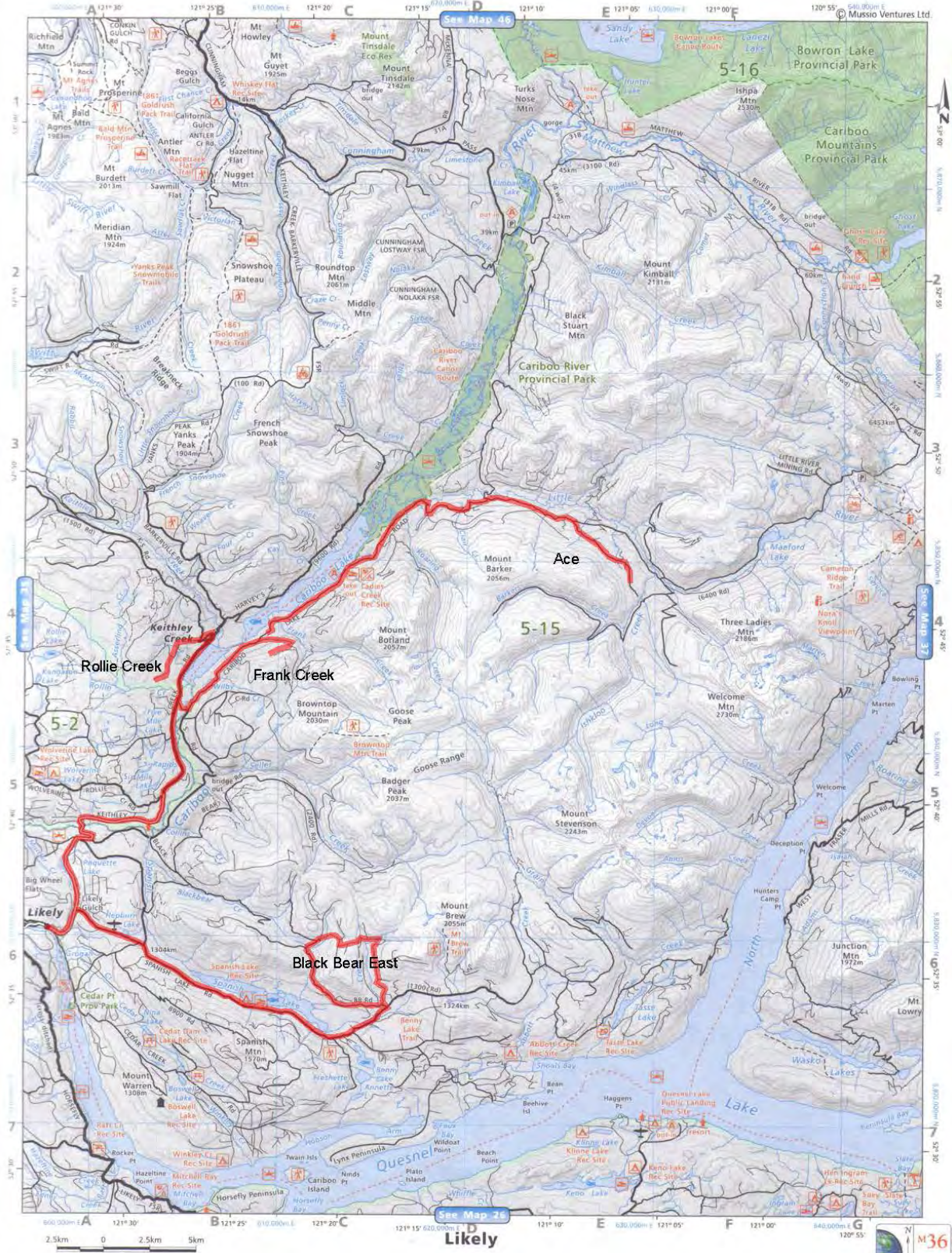


Figure No. 3 Access roads from Likely to several of Barker Minerals' properties.

6.0 HISTORY

6.1 History of Work Done at Unlikely – Keithley areas.

No significant historical work has been done over the Unlikely and Keithley Areas but for that described below.

6.1.1 Work done in 2014

The relevant report is Assessment Report 35157 by R. Turna.

Soils were sampled by Barker Minerals Ltd. along the Keithley Creek Road along the west shore of Cariboo Lake. Further soils and rocks were collected further west on the 1500 Road and Rollie Branch Road. Approximately 160 soils and 50 rocks were analyzed. A “vms” massive sulphide boulder was discovered on the lower portion of the 1500 Road, 1.0 km north of the “Unlikely” showing.

An intense vertical shear, striking E-W, was mapped in the “Unlikely” outcrop. An E-W topographic lineament, visible in satellite photos, runs from the Unlikely showing to the Frank Creek massive sulphide prospect, 5.0 km eastward. This geology and the apparent connection between the Unlikely and Frank Creek prospects is further discussed in Section 7.3 of this report.

7.0 GEOLOGY

7.1 Regional Geology

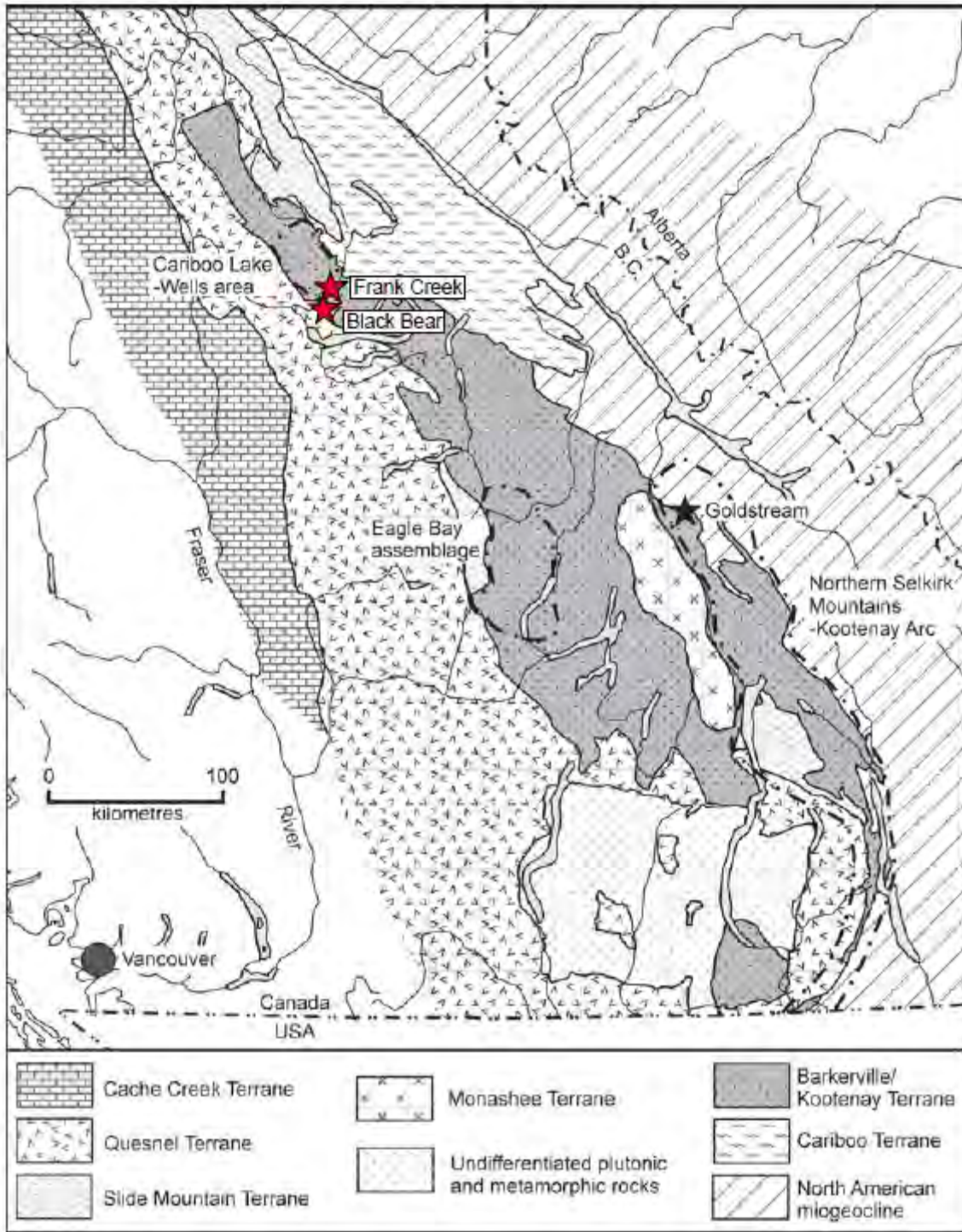


Figure No. 4 Terrane Map of Southern British Columbia. Several Barker Minerals' properties are indicated by red stars.

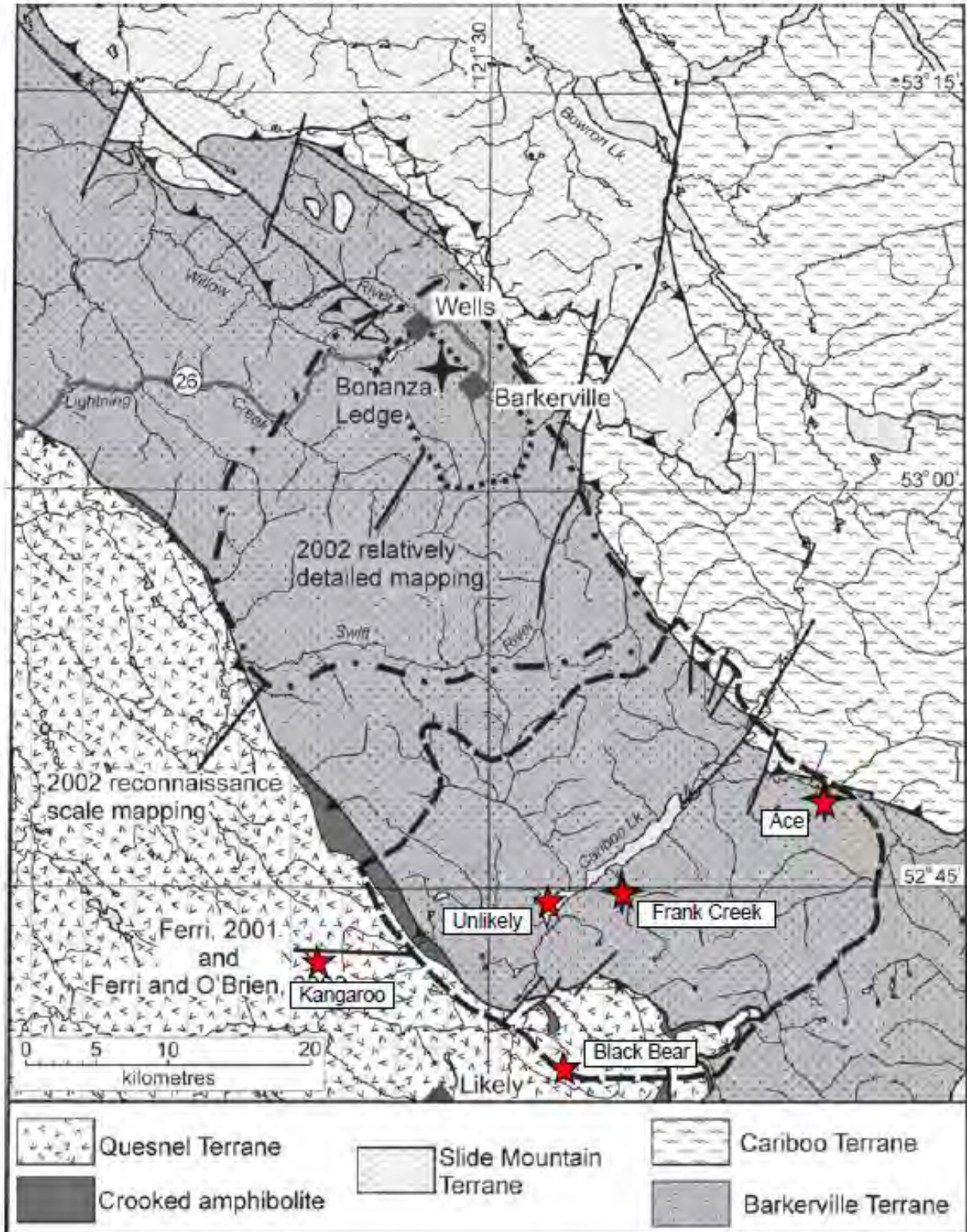


Figure No. 5 Terrane Map of Cariboo Lake – Wells Area. Areas mapped by the BCGS in 2000 – 2002 are shown. Several Barker Minerals' properties are indicated by red stars.

The geological descriptions below derive mainly from Struik (1988), Panteleyev et al. (1996) and Payne and Perry (2001).

During the mid-Jurassic the North American continental plate collided with a group of island arcs to the west. Regional deformation and metamorphism are related to these events.

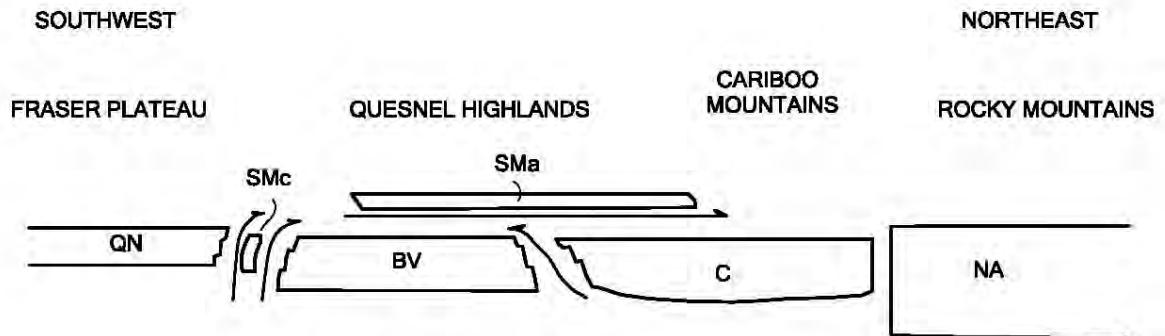


Figure No. 6 Schematic regional structural section from southwest to northeast across the four Terranes in Barker Minerals' claims area, showing the relative structural position of the Terranes. The Terrane symbols are BV-Barkerville, C-Cariboo, Sma-Slide Mountain (Antler Formation), SMc-Slide Mountain (Crooked amphibolite), QN-Quesnel and NA-North American. (after Struik, 1988).

Quesnel Terrane

The Late Triassic to Early Jurassic Quesnel Terrane...was accreted to the North American continent, in part by subduction and in part by obduction. The Eureka Thrust fault marks the boundary between the Quesnel and Barkerville terranes. The terrane is partly submarine and partly subaerial, consisting of volcanic and volcanoclastic rocks and co-magmatic intrusions, with minor carbonate lenses and related sedimentary rocks.

The principal assemblage in the Quesnel Terrane is the Triassic-Jurassic Nicola Group island arc – marginal basin sequence. The underlying rocks are the Crooked Amphibolite, part of the Slide Mountain assemblage, a mylonitized mafic and ultramafic unit of oceanic marginal basin volcanic and sedimentary rocks. Rocks of Quesnel Terrane and Crooked Amphibolite are structurally coupled and tectonically emplaced by the Eureka Thrust onto the Barkerville Terrane, to the east.

Two lithostratigraphic subdivisions of the Quesnel Terrane consists of: a basal Middle to Late Triassic metasedimentary unit of dominantly black phyllitic rocks, approximately 7 km thick, and an overlying Late Triassic to Early Jurassic volcanic arc assemblage, approximately 9 km thick. The overlying volcanic rocks outline a northwesterly trending belt of subaqueous and subaerial volcanic rocks, deposited along a series of volcanic-intrusive centres that define the Quesnel island arc of predominantly alkalic basalts.

Within...the northern extension of the Quesnel Trough, the term...Takla Group has been applied to rocks identical to the Quesnel belt rocks...Equivalent rocks to the south...are generally referred to as Nicola Group...Baily (1978) pointed out the similarity of the Quesnel volcanic units with both the Nicola Group rocks to the south and the Takla Group rocks to the north...The term Takla leads to ambiguity because in northern British Columbia it has been used for rocks in both Quesnel and Stikine terranes...The usage for the Triassic-Jurassic volcanic arc and related rocks in Quesnellia currently preferred is Nicola Group. The term Takla Group possibly should be discarded... (Panteleyev et al., (1996).

The Quesnel Trough is a well-mineralized region typical of other Late Triassic to Early Jurassic volcano-plutonic island arcs in the Cordillera. It hosts a wide variety of mineral deposits. The principal recent exploration and economic development targets in the central Quesnel belt are alkalic intrusion-related porphyry copper-gold deposits and gold-bearing propylitic alteration zones formed in volcanic rocks peripheral to some of the intrusions. Other important targets are auriferous quartz veins in the black phyllite metasedimentary succession. The veins in some black phyllite members have potential to be mined as large tonnage, low-grade deposits. Tertiary rocks are mineralized with copper and gold. Antimony-arsenic and mercury mineralization in some apparently low temperature quartz-calcite veins indicated the potential for epithermal deposits. Placer mining for gold, said to occur together with platinum, has been of major historical and economic importance.

Slide Mountain Terrane

Rocks of the Devonian to Late Triassic Slide Mountain Terrane were partly obducted, partly subducted during collision of an oceanic plate with the continent. Small slices of mainly mafic volcanic rocks and ultramafic rocks of the Slide Mountain Terrane occur in and parallel to the Eureka thrust. Minor lithologies include chert, meta-siltstone and argillite.

The Crooked Amphibolite, considered to likely be a part of the Slide Mountain Terrane, includes three major constituent rock types: greenstone, metagabbro and meta-ultramafite. North of Quesnel Lake, the map units consist of mafic metavolcanics, amphibolite, chlorite schist, serpentinite, ultramafic rocks and pillow lavas. Chemical analyses indicate subalkaline tholeiitic compositions of basalts formed on the ocean floor. If the Crooked Amphibolite is a sheared and metamorphosed equivalent of the Antler Formation and is part of the Slide Mountain Terrane, it is separated from the underlying Barkerville Terrane by the Eureka Thrust, a wide zone of mylonitization. The Crooked amphibolite and the overlying rocks of Quesnel Terrane are structurally coupled and emplaced tectonically onto Barkerville Terrane.

Barkerville Terrane

The Barkerville Terrane is made up of the Snowshoe Group and Quesnel Lake gneiss. The Snowshoe Group rocks are Upper Proterozoic to Upper Devonian metasediments, considered correlative in age with the Eagle Bay Formation in the Kootenay Terrane to the south. The Snowshoe Group rocks are dominated by varieties of grit, quartzite, pelite, limestone and volcanoclastic rocks. The stratigraphic sequence is not well understood. The

region was deformed by intense, complex, in part isoclinal folding and overturning. Locally, strong shear deformation produced mylonitic textures. The Quesnel Lake Gneiss is a Devonian to Mississippian intrusive unit varying in composition from diorite to granite to syenite. It is generally coarse grained, leucocratic, often with megacrysts of potassium feldspar. The main body of gneiss is 30 km long by 3 km wide and is elongated parallel to the eastern border of the Intermontane belt. Its contacts are in part concordant with, and in part perpendicular to, metamorphic layering.

The contact between the Barkerville Terrane and Cariboo Terrane to the east is the Pleasant Valley Thrust. The Barkerville and Cariboo Terranes were juxtaposed prior to emplacement of the Slide Mountain Terrane which was thrust over both of them. The northeastern third of the Barkerville Terrane is the main zone of economic interest in the Cariboo district. Struik described it as “gold-enriched”, because it contains the historic Wells and Barkerville gold mines and the Cariboo Hudson deposit, approximately 40 km and 20 km northwest of the project area, respectively.

Cariboo Terrane

The northeastern part of Barker Minerals’ ‘Peripheral’ claim group is underlain by Precambrian to Permo-Triassic marine peri-cratonic sedimentary strata of the Cariboo terrane. The Cariboo Terrane consists mainly of limestone and dolomite with lesser siliceous, clastic, sedimentary rocks and argillite. Some geologists believe that the Cariboo Terrane is a shallow, near-shore facies and the Barkerville is a deeper, offshore facies of the same erosion-deposition system. No rifting is suspected between the Cariboo Terrane and the North American continent, in contrast to that between the Barkerville Terrane and the North American continent. Lithologies within the Cariboo Terrane correlate well with parts of the Classier Platform and Selwyn Basin of Yukon and northern British Columbia.

The Cariboo and Barkerville Terranes are separated by the regional Pleasant Valley Thrust fault, which dips moderately to steeply northeast. Struik (1988) states the Cariboo block was thrust from the east over the Barkerville block along a strike length of over 100 km. The Cariboo Terrane was cut by the Jurassic-Cretaceous Little River stock, a medium-grained granodiorite grading to quartz monzonite. Some of the carbonate layers in the lowest part of the Cariboo terrane (or upper part of the Barkerville Terrane) are enriched in zinc and lead. Since the 1970's, preliminary exploration on stratiform Zn-Pb targets has been conducted in this area.

Glaciation and glacial deposits

The last glacial stage that affected the Quesnel Highland, the Fraser glaciation, began 30,000 years ago. Much of this ice had melted by 10,000 years ago, but small remnants are preserved high in the alpine areas of the Cariboo Mountains. At lower elevations, glaciers of this age scoured the debris left by preceding ice advances, almost completely destroying them, leaving a chaotic assemblage of unsorted till, moraine and drift, with lenses of gravel and sand that had been roughly sorted by melt water and rivers, leaving behind beds of silt and clay that were stratified by settlement in ice-dammed lakes. In the Cariboo area, the debris covers bedrock in valleys below 1,700 m, leaving typical glacial features such as U-

shaped valleys, ice-sculpted drumlins, moraine terraces and glacier and river benches. On the Barker Minerals properties, glacial deposits range from one to a few tens of metres thick. Some glacial till deposits are overlain by well-bedded glaciolacustrine clay and silt deposits up to a few tens of metres thick.

In much of the Cariboo district, a layer of distinctive, hard, compact, semi-rigid blue clay sits either on or slightly above bedrock and acts as “false” bedrock. It was formed from glacial drift left behind by the last ice advance prior to the Fraser glaciation and was compacted by the weight of the Fraser stage ice. In the placer-gold areas of the Cariboo, large amounts of gold were recovered from gravel resting on this clay. In places the clay layer was penetrated by the placer miners to reach richer “pay streaks” on true bedrock below.

7.2 Geology at Cariboo Lake

Figure No. 7 presents the broad-scale geology and stratigraphy of the Cariboo Lake project area. Work by Struik (1983), Ferri (2001) and Ferri and O'Brien (2002) placed the rocks of Barker's project areas in the Snowshoe Group of the Barkerville terrane. These rocks include, from oldest to youngest, the Keithley succession, Harvey's Ridge succession and Goose Peak quartzite.

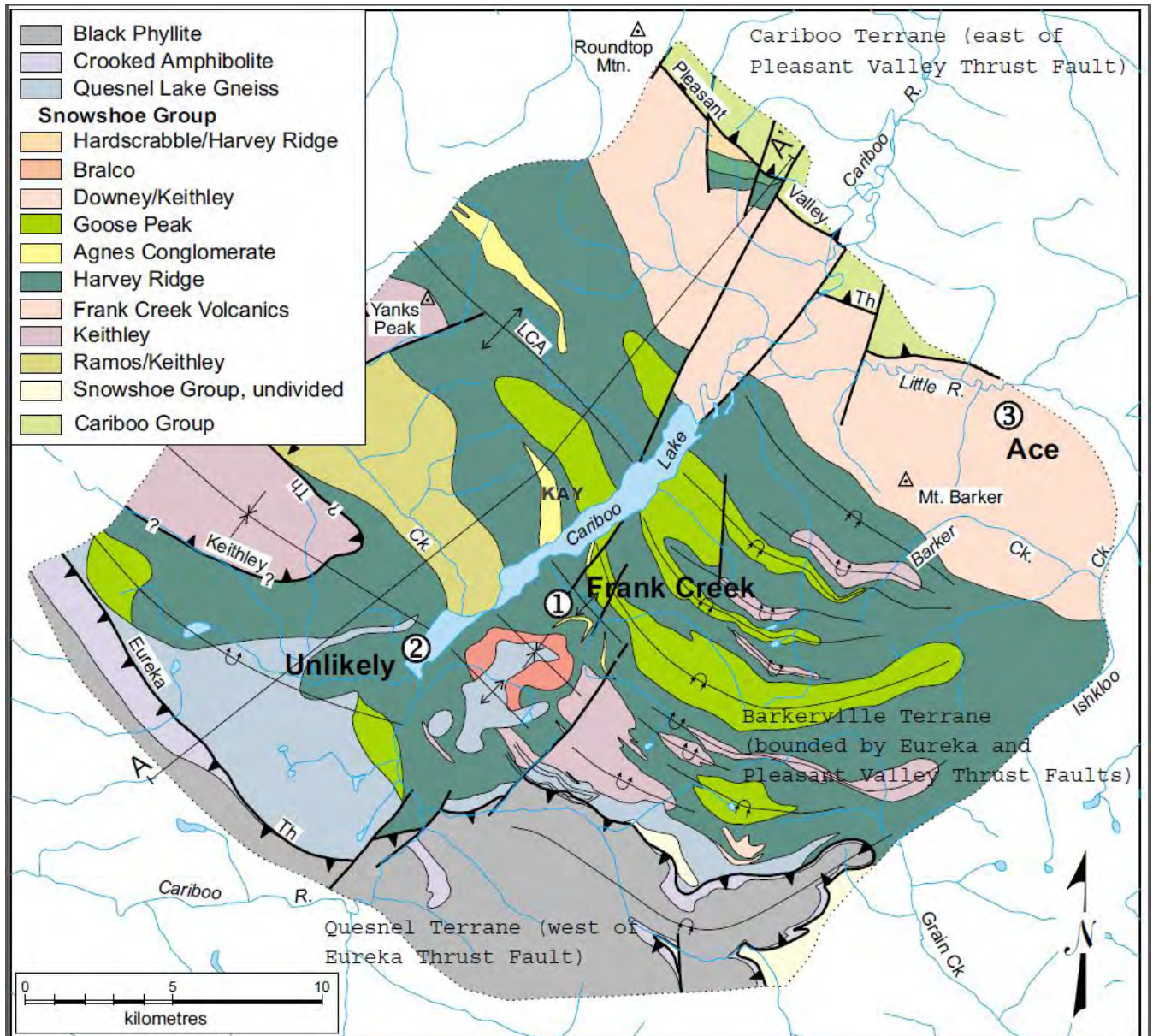


Figure No. 7 Geology and Stratigraphy of the Snowshoe Group. Barker Minerals' Unlikely and Frank Creek and mineral prospects within the Cariboo Lake project are indicated on this BC Government map.

7.3 Local Geology at Unlikely to Frank Creek

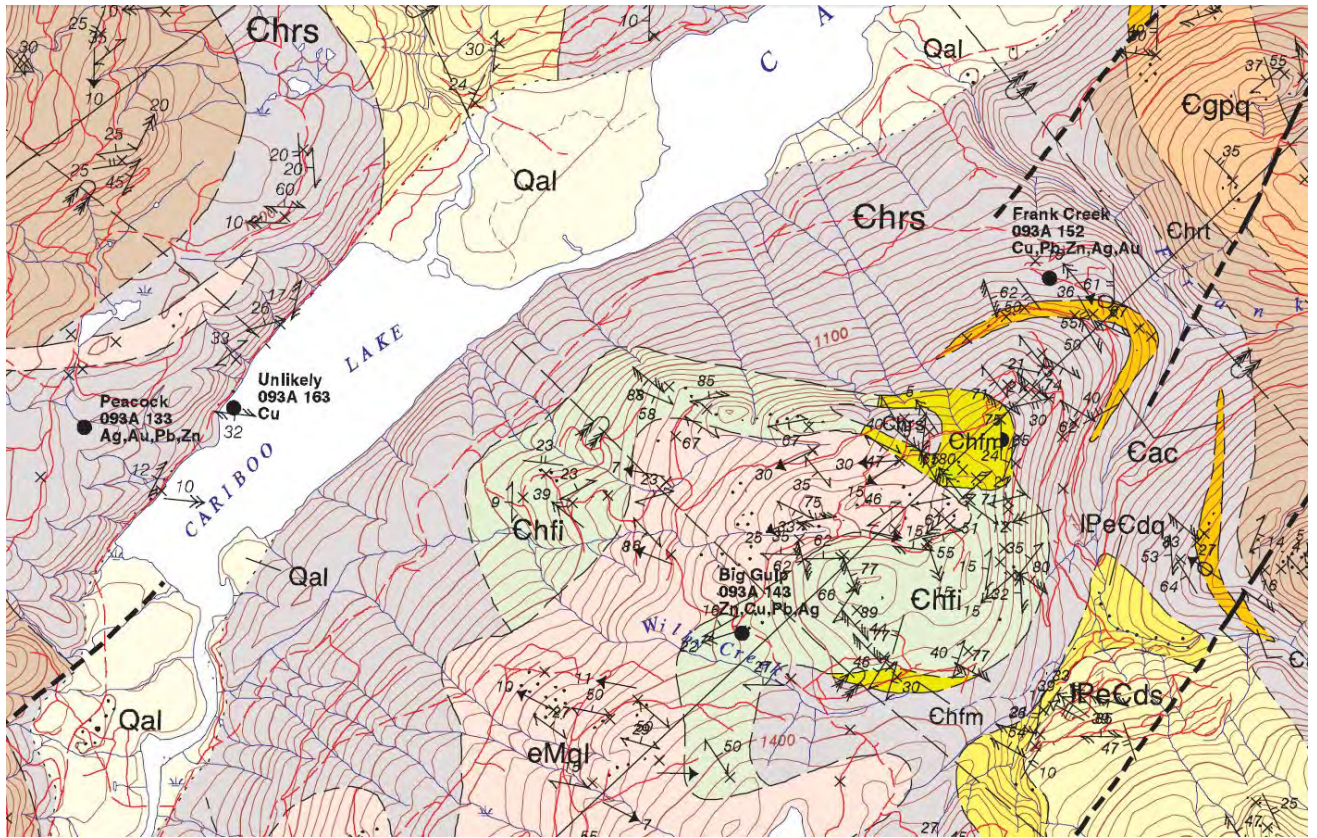


Figure No. 8. Geology of Unlikely - Frank Creek area, after Ferri & O'Brien, 2003. Chrs = Harveys Ridge phyllite and sedimentary rocks, Cac = Agnes sedimentary rocks, Chfm and Chfi = Frank Creek metavolcanics, eMql = Quesnel Lake granite and granodiorite. The Minfile showings Frank Creek, Big Gulp and Unlikely are owned by Barker Minerals Ltd. The black spot indicating the Frank Creek Minfile is at the location of the Discovery Trench. Cariboo Lake is approximately 1 km across in a NW-SE direction. Overturned anticlines and synclines are indicated. Overturned lava pillows with tops toward the east are indicated in unit Chfm. Work by Barker Minerals has indicated some of the phyllites of unit Chrs in the Frank Creek work area are felsic volcanoclastics.

Float rocks observed in the 2017 & 2018 Unlikely and Keithley sampling areas were generally grey to black siltstones and mafic metavolcanics.



Figure No. 9. Satellite photo of approximately the same area as in Figure No. 8. An east-west topographic lineament, located on the south side of the Frank Creek F1 and F9 showings, extends westward toward the Unlikely showing. The lineament is plainly evident over the land area across the centre of the photo and is partly indicated by a red line drawn only over the lake. A portion of the Unlikely showing outcrop has intense shearing (see Figure No. 10) indicating an east-west fault with a vertical dip which may be related to the above lineament. The proposed E-W fault may pre-date the NE-SW fault (or joint) occupying the Cariboo Lake valley as the latter fault line shows no significant displacement in an E-W direction. Likewise, the proposed E-W fault also appears not to be displaced as it's line crosses the Cariboo Lake valley undisturbed. This, and the regional geology, suggest no great strike-slip movement occurred along the NE-SW line. It is possible the Unlikely mineral occurrence to the west are equivalent to the F1 and F9 occurrences at Frank Creek, displaced by an E-W fault.

7.4 The “Unlikely” Showing

The Unlikely Showing is characterized by semi-massive sulphide. It is located along the Keithley Creek Road, approximately 2 kilometres southwest of the community of Keithley Creek on the west side of Cariboo Lake.

The stratiform nature, lithologic association and mineralogy are similar to the stratiform massive sulphide prospect at Frank Creek, 5 km to the east.



Figure No. 10 Vertically-dipping east-west intense shear at the Unlikely showing.



Figure No. 11 Apparent drag folding adjacent to the shear at the Unlikely showing.

8.0 EXPLORATION PROGRAM, 2017 and 2018

8.1 Sampling Method and Approach

Rocks were analyzed for multiple elements using the Niton XL3t handheld X-ray fluorescence analyzer from Thermo Scientific Inc. Further information on this instrument is at the Niton website <http://www.niton.com/en/niton-analyzers-products/xl3/xl3t>. An overview of sample analysis using energy dispersive X-ray fluorescence (EDXRF), adapted from the Niton website, is in Appendix B.

The rocks were analyzed in a manner to determine both their “high grade” and “low grade” values at each site, in order to minimize a “nugget” effect and to determine background values. 166 rock analyses were done.

The XRF analysis method does not replace laboratory assay. It detects the presence or absence of multiple elements and, up to a certain point, the intensity of mineralization and correlation among elements in a specimen. The XRF is very useful in analysis for base economic and pathfinder metals though Au needs to be in relatively high grade in order to be detected by the XRF.

8.2 Economic Targets and Work Done

The economic targets over all of the Cariboo Lake Property claims are volcanogenic massive sulphide and gold in quartz veins, similar to Barker Minerals’ targets at Frank Creek on the east side of Cariboo Lake. As, Pb and Zn results in rocks are plotted on geochemical maps for the Keithley Area. Zn and Cu results in rocks are plotted on the geochemical map for the Unlikely Area. These maps and accompanying geochemical tables are in Appendix G.

These elements were chosen for the maps as they are usually best pathfinder elements massive sulphide-type deposits and for Au, and were more frequently detected during the soil survey than other elements.

Unlikely Area

Zn and Cu were considered the best pathfinder elements in this area and often had anomalously high values. The highest results in Zn and Cu were 581 ppm and 1,611 ppm, respectively. Some of the high Zn and Cu results occurred together in the same sample though many did not. It is too early to consider what the level of correlation exists between these two elements.

Keithley Area

Pb, As and Zn were considered the best pathfinder elements in the overall Keithley area and often had very high values. The correlation among these three elements is considered to be good, especially between Pb and As. A larger population of samples should be collected before a statistical study may be made.

In Area A, the highest results in Pb, As and Zn were 4,505 ppm, 2,294 ppm and 4,634 ppm, respectively. Sample nos. 4633 and 4646 had Au results of 10.22 ppm and 10.54 ppm, respectively. These two samples were also weakly anomalous in As.

In Area B, the highest results in Pb, As and Zn were 309,674 ppm, 12,323 ppm and 1,789 ppm, respectively.

In Area C, the highest results in Pb, As and Zn were 5,394 ppm, 1,629 ppm and 6,297 ppm, respectively.

9.0 CONCLUSIONS and RECOMMENDATIONS

Further rock sampling and soil sampling should be done in the Unlikely and Keithley areas. More intensive sampling should be done around Sample Nos. 4633 and 4747 to follow up the 10.22 ppm and 10.54 ppm Au results in Keithley Area A.

The 2017 and 2018 rock sampling program was of limited scope. The very extensive work history of the Frank Creek massive sulphide on the Cariboo Lake ("Main") Property resulted in historical recommendations for comprehensive follow up work to be done at that location. A synthesis of the historical work should be done along with work recommended by the previous programs on the Cariboo Lake ("Main") Property, in order to help plan the next stage of exploration on the claim group with possible new emphasis at the Unlikely and Keithley areas.

APPENDIX A

Glossary of Technical Terms and Abbreviations

Glossary of Technical Terms and Abbreviations

Anomalous	Chemical and mineralogical changes and higher than typical background values in elements in a rock resulting from reaction with hydrothermal fluids or increase in pressure or temperature.
Anomaly	The geographical area corresponding to anomalous geochemical or geophysical values.
Argentiferous	Containing silver.
Background	The typical concentration of an element or geophysical response in an area, generally referring to values below some threshold level, above which values are designated as anomalous.
BBE	Black Bear East property.
BCGS	British Columbia Geological Survey.
B.C. MEMPR	British Columbia Ministry of energy Mines and Petroleum Resources.
cm	Centimetre.
Cratonic	Pertaining to a craton, an old part of the continental crust, generally making up the interior portion of a continent such as North America.
DCIP	An electrical method which uses the injection of current and the measurement of voltage and its rate of decay to determine the subsurface resistivity and chargeability.
DDH	Diamond drill hole.
eg.	<i>exempli gratiā</i> (for the sake of example).
EM	Electromagnetic.
E-W	East-West.
Float	Loose rocks or boulders; the location of the bedrock source is not known.
GBC	Geoscience BC.
GSC	Geological Survey of Canada.

Grab sample	A sample of a single rock or selected rock chips collected from within a restricted area of interest.
g/t	Grams per tonne (metric tonne). 34.29 g/t (metric tonnes) = 1.00 oz/T (short tons).
Ha	Hectare - an area totalling 10,000 square metres, e.g., an area 100 metres by 100 metres.
HLEM	Horizontal loop electromagnetic.
IP	Induced polarization.
km	Kilometre.
lb.	Pound.
Leucocratic	Light-coloured.
<LOD	Below the level of detection.
m	Metre.
Max-Min	An HLEM technique to test for resistivity and conductivity of rocks.
MT	Magnetotelluric. A electrical method that uses natural variations in the Earth's magnetic field to induce electric current in the ground to determine the subsurface resistivity.
my	Million years.
NE-SW	Northeast-Southwest.
NNW-SSE	North northwest – South southeast.
NW	Northwest.
NW-SE	Northwest - Southeast.
N-S	North-South.
OF	Open File.
oz.	Ounce.

oz/T	ounces per ton (Imperial measurement). 34.29 g/t (metric tonnes) = 1.00 oz/T (short tons).
oz/st	ounces per short ton (Imperial measurement, same as oz/T). 34.29 g/t (metric tonnes) = 1.00 oz/st (short tons).
Pathfinder	A metallic element associated with an ore element such as silver or gold. Areas of anomalous “pathfinder” elements can suggest the possible presence of ore elements though the latter may not be detected initially.
ppb	Parts per billion.
ppm	Parts per million (1 ppm = 1,000 ppb = 1 g/t).
Protolith	The original rock before it was metamorphosed.
QUEST	Quesnellia Exploration Strategy, a BCGS geophysical survey.
Sedex	Sedimentary-exhalative mineral deposit type.
SE	Southeast.
TEM or TDEM	Time Domain EM.
Tensor-magnetotelluric	See MT.
Tholeiitic	A type of basalt. The most common volcanic rocks on Earth, produced by submarine volcanism at mid-ocean ridges and make up much of the ocean crust. Chemically, these basalts have been described as subalkaline, that is, they contain less (Na ₂ O plus K ₂ O) at similar SiO ₂ than alkali basalt.
TRIM	Terrain Resource Information Management, series of 1:20,000 scale maps.
VLF	Very low frequency.
VLF-EM	Very low frequency electromagnetic.
VMS	Volcanic-related massive sulphide.
XRF	X-ray fluorescence.

APPENDIX B

Analytical Methods

Overview of sample analysis using energy dispersive X-ray fluorescence using the Thermo Scientific Niton XL3t handheld XRF analyzer

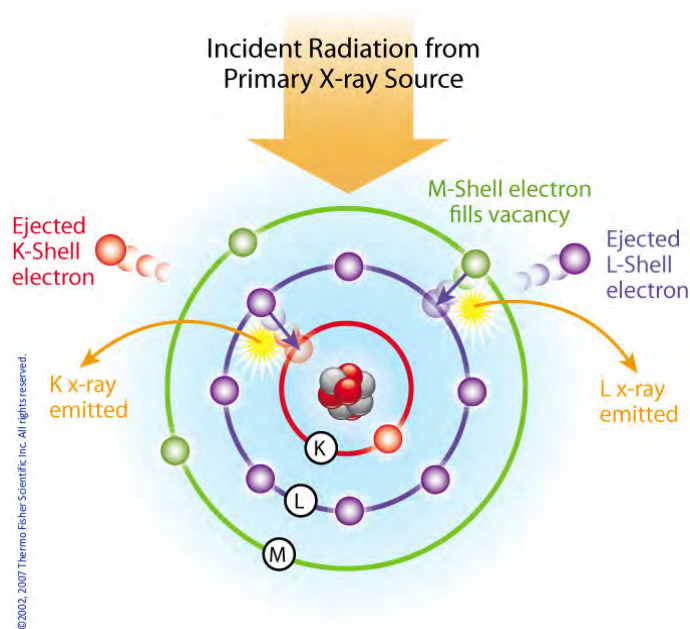
Thermo Scientific portable energy-dispersive x-ray fluorescence (EDXRF) analyzers, commonly known as XRF analyzers, can quickly and nondestructively determine the elemental composition of metal and precious metal samples of rocks, ore and soil.

Up to 40 elements may be analyzed simultaneously by measuring the characteristic fluorescence x-rays emitted by a sample. XRF analyzers can quantify elements ranging from magnesium (Mg - element 12) through uranium (U - element 92) and measure x-ray energies from 1.25 keV up to 85 keV in the case of Pb K-shell fluorescent x-rays excited with a ^{109}Cd isotope. These instruments also measure the elastic (Rayleigh) and inelastic (Compton) scatter x-rays emitted by the sample during each measurement to determine, among other things, the approximate density and percentage of the light elements in the sample.

Elemental Analysis - A Unique Set of Fingerprints

How does XRF work? Each of the elements present in a sample produces a unique set of characteristic x-rays that is a "fingerprint" for that specific element. XRF analyzers determine the chemistry of a sample by measuring the spectrum of the characteristic x-ray emitted by the different elements in the sample when it is illuminated by x-rays. These x-rays are emitted either from a miniaturized x-ray tube, or from a small, sealed capsule of radioactive material.

1. A fluorescent x-ray is created when an x-ray of sufficient energy strikes an atom in the sample, dislodging an electron from one of the atom's inner orbital shells.
2. The atom regains stability, filling the vacancy left in the inner orbital shell with an electron from one of the atom's higher energy orbital shells.
3. The electron drops to the lower energy state by releasing a fluorescent x-ray, and the energy of this x-ray is equal to the specific difference in energy between two quantum states of the electron.



Atom emits characteristic X-rays when illuminated by x-rays from a primary source.

When a sample is measured using XRF, each element present in the sample emits its own unique fluorescent x-ray energy spectrum. By simultaneously measuring the fluorescent x-rays emitted by the different elements in the sample, the Thermo Scientific portable XRF analyzers can rapidly determine those elements present in the sample and their relative concentrations - in other words, the elemental chemistry of the sample.



Overview of the Thermo Scientific Niton XL3t handheld XRF analyzer.

APPENDIX C

REFERENCES

Reports listed below which are Assessment Reports are available for free download from the BC Geological Survey (BCGS) Assessment Report Indexing System (ARIS) at the Ministry of Energy, Mines and Petroleum Resources' website. www.empr.gov.bc.ca/Mining/Geoscience/ARIS

Ballantyne, S.B., Hornbrook, E.W.H., Johnson, W.M., National Geochemical Reconnaissance, Quesnel Lake, British Columbia, NTS 093A, GSC Open File 776, 1981. (Alternately, BC MEMPR Open File BC RGS-5).

Bowman, A., Report on the Geology of the Mining District of Cariboo, British Columbia, in Geological and Natural History Survey of Canada Reports and Maps of Investigations and Surveys, 1887-1888; Selwyn, A R C; Geological Survey of Canada, Annual Report vol. 3, pt. 1, 1889; pages 1C-49C 5 sheets, including a Map titled Placer Mines of Harvey Creek in Cariboo District, British Columbia, GSC Map 371, (1890).

Brown, A.S., Geology of the Cariboo River Area, British Columbia, BC Department of Mines and Petroleum Resources, Bulletin No. 47, 1963.

Ferri, F., and O'Brien, B.H., Preliminary Geology of the Cariboo Lake Area, Central British Columbia (093A/11, 12, 13 and 14), in Geological Fieldwork 2001, B.C. Ministry of Energy and Mines, Paper 2002-1.

Ferri, F., and O'Brien, B.H., Geology of the Cariboo Lake Area, Central British Columbia (093A/11, 12, 13 and 14), B.C. Ministry of Energy and Mines, Open File 2003-1.

Ferri, F., and O'Brien, B.H., Geology and Massive Sulphide Potential of the Barkerville Terrane, Cariboo Lake Area, British Columbia, BC Geological Survey Branch, Cordillerran Roundup Poster No. 8, Information Circular 2002-3.
http://www.empr.gov.bc.ca/DL/GSBPubs/InfoCirc/IC2002-3/08-Ferri_Barkerville.pdf

Ferri, F. & Schiarizza, P., Re-interpretation of the Snowshoe Group stratigraphy across a south-west verging nappe structure and its implications for regional correlations within the Kootenay terrane in Geological Association of Canada GAC Special Paper 45, 2006.

Hóy, T. and Ferri, F., Stratabound Base Metal Deposits of the Barkerville Subterrane, Central British Columbia (093A/NW), in Geological Fieldwork 1997, B.C. Ministry of Energy and Mines, Paper 1998-1.

Lane, B. and MacDonald K., Volcanogenic Massive Sulphide Potential in the Slide Mountain and Barkerville Terranes, Cariboo Mountains, in BC Mines Branch, Exploration and Mining in British Columbia – 1999, pp 65-77.

McKinley, S. D., (2004), Technical Report on the Cariboo Properties of Barker Minerals Ltd. (Including The Frank Creek and Sellers Creek Road Massive Sulphide Projects, the Ace Massive Sulphide and Vein Gold Project, the Kangaroo Copper-Gold Project, the Rollie Creek Project and the Quesnel Platinum Project), July 19, 2004. Report filed with System for Electronic Document Analysis and Retrieval (SEDAR) under authority of Canadian Securities Administrators (CSA), (and as Appendix VI in Assessment Report 27655 by Doyle, L.E. and Appendix I in Assessment Report 28248 by Doyle, L.E.).

Panteleyev, A., Bailey, D.G., Bloodgood, M.A. and Hancock K.D., (1996), Geology and Mineral Deposits of the Quesnel River – Horsefly Map Area, Central Quesnel Trough, British Columbia, NTS Map sheets 93A/5, 6, 7, 11, 12, 13; 93B/9, 16; 93G/1; 93H4, BC Geological Survey Branch Bulletin 97.

Turna R., Geological, Geochemical, Prospecting and Physical Work Assessment Report on the Frank Creek, Black Bear East and Peripheral Properties, Assessment Report 35157, dated February 18, 2015.

Additional References:

Barker Minerals Ltd. website <http://www.barkerminerals.com/s/Background.asp>

BC Ministry of Energy Mines and Petroleum Resources, Mineral Deposit Models:

Deposit Type G04 - Besshi massive sulphide

APPENDIX D

STATEMENT of AUTHOR'S QUALIFICATIONS

Statement of Author's Qualifications

I, Rein Turna, of the City of West Vancouver, British Columbia, hereby certify that:

1. I am Vice President of Exploration of Barker Minerals Ltd.
2. I am a graduate of the University of British Columbia with a B.Sc. in Geological Sciences granted in 1975.
3. I am a registered member of the Professional Engineers and Geoscientists of British Columbia.
4. I have worked as a geologist in British Columbia, Saskatchewan, Ontario, Yukon and Northwest Territories in Canada since 1975.

R. Turna

November 25, 2018

APPENDIX E

STATEMENT of EXPENDITURES

Barker Minerals Ltd.

Work was completed between October 25, 2017 and July 7, 2018

Work was done on claim no.'s 1055652 and 1055653

Event # 5703376

Cariboo Lake Property - Unlikely & Keithley Areas - Office

Rein Turna - Geologist

Report writing, maps and managing	6	\$ 600.00	\$	3,600.00
Room & board	6	\$ 150.00	\$	900.00

Louis Doyle

Planning and managing	2	\$ 600.00	\$	1,200.00
Room & board	2	\$ 150.00	\$	300.00

Colleen Doyle

Report compilation and filing	2	\$ 350.00	\$	700.00
Room & board	2	\$ 150.00	\$	300.00

\$ 7,000.00

Cariboo Lake Property - Unlikely & Keithley Areas - Geochemical - Field

	Date	Days	Rate	Sub-total
Louis Doyle				
Rock collections - Unlikely & Keithley Areas	November 20, 2017	1	\$ 600.00	\$ 600.00
Rock collections - Unlikely & Keithley Areas	November 21, 2017	1	\$ 600.00	\$ 600.00
Rock collections - Unlikely & Keithley Areas	November 22, 2017	1	\$ 600.00	\$ 600.00
Rock collections - Unlikely & Keithley Areas	June 6, 2018	1	\$ 600.00	\$ 600.00
Rock collections - Unlikely & Keithley Areas	June 7, 2018	1	\$ 600.00	\$ 600.00
Rock collections - Unlikely & Keithley Areas	June 8, 2018	1	\$ 600.00	\$ 600.00
Room & board		6	\$ 150.00	\$ 900.00
Vehicle & gas		6	\$ 150.00	\$ 900.00
Brian Hall				
Rock collections - Unlikely & Keithley Areas	November 20, 2017	1	\$ 600.00	\$ 600.00
Rock collections - Unlikely & Keithley Areas	November 21, 2017	1	\$ 600.00	\$ 600.00
Rock collections - Unlikely & Keithley Areas	November 22, 2017	1	\$ 600.00	\$ 600.00
Rock collections - Unlikely & Keithley Areas	June 6, 2018	1	\$ 600.00	\$ 600.00
Rock collections - Unlikely & Keithley Areas	June 7, 2018	1	\$ 600.00	\$ 600.00
Rock collections - Unlikely & Keithley Areas	June 8, 2018	1	\$ 600.00	\$ 600.00
Room & board		6	\$ 150.00	\$ 900.00
Louis Doyle				
Rock sample prep and XRF assistant	June 9, 2018	1	\$ 600.00	\$ 600.00
Rock sample prep and XRF assistant	June 10, 2018	1	\$ 600.00	\$ 600.00
Rock sample prep and XRF assistant	June 11, 2018	1	\$ 600.00	\$ 600.00
Room & board		3	\$ 150.00	\$ 450.00

Barker Minerals Ltd.

Work was completed between October 25, 2017 and July 7, 2018

Work was done on claim no.'s 1055652 and 1055653

Event # 5703376

Cariboo Lake Property - Unlikely & Keithley Areas - Geochemical - Field - (Continued)

	Date	Days	Rate	Sub-total
Brian Hall				
XRF operator	June 9, 2018	1	\$ 600.00	\$ 600.00
XRF operator	June 10, 2018	1	\$ 600.00	\$ 600.00
XRF operator	June 11, 2018	1	\$ 600.00	\$ 600.00
Room & board		3	\$ 150.00	\$ 450.00
XRF rental		9	\$ 200.00	\$ 1,800.00
				\$ 16,200.00

Cariboo Lake Property - Unlikely & Keithley Areas - Travel to/from

	Date	Days	Rate	Sub-total
Louis Doyle				
Travel to/from	June 5, 2018	1	\$ 600.00	\$ 600.00
Travel to/from	June 15, 2018	1	\$ 600.00	\$ 600.00
Room & board		2	\$ 150.00	\$ 300.00
Vehicle & gas		2	\$ 150.00	\$ 300.00
Brian Hall				
Travel to/from	June 5, 2018	1	\$ 600.00	\$ 600.00
Travel to/from	June 15, 2018	1	\$ 600.00	\$ 600.00
Room & board		2	\$ 150.00	\$ 300.00
Vehicle & gas		2	\$ 150.00	\$ 300.00
			Sub-total	\$ 3,600.00

Cariboo Lake Property - Unlikely & Keithley Areas - Misc. expenditures

Exploration supplies & equipment				\$ 245.00
Quad		6	\$ 150.00	\$ 900.00
Safety Equipment (MTC rental)		9	\$ 150.00	\$ 1,350.00
Communication devices -				
Hand held radios, satellite radios phones & SPOT locators		6	\$ 25.00	\$ 150.00
			Sub-total	\$ 2,645.00

Cariboo Lake Property - Unlikely & Keithley Areas - Expenditure Summary

Office Sub-total	\$ 7,000.00
Geochemical Sub-total	\$ 16,200.00
Travel to/from Sub-total	\$ 3,600.00
Misc. Expenditures Sub-total	\$ 2,645.00
Expenditure Total	\$ 29,445.00

APPENDIX F

ROCK SAMPLE DESCRIPTIONS AND COORDINATES

Table No. 2
Cariboo Lake Project Sample Coordinates and Descriptions

<u>XRF No.</u>	<u>Field No.</u>	<u>Fig. No. / Area</u>	<u>Type</u>	<u>Easting (X)</u>	<u>Northing (Y)</u>	<u>XRF Target and Description and Comment</u>		<u>Magnetic</u>
						<u>XRF Target Features</u> 1 = sample of main mass 4 = sulphide band 2 = quartz vein 5 = rusty, altered 3 = sulphide bleb 6 = other		Y or N
		<u>Keithley Rock Sampling</u>						
4541	Keit-o17-01	Fig No 15 /Area B	Float	X = 606335	Y = 5848142	3	Grab of float. Galena evident in siltstone.	N
4542	Keit-o17-01a	Fig No 15 /Area B	Float	X = 606335	Y = 5848142	3	Grab of float. Galena evident in siltstone.	N
4543	Keit-o17-01b	Fig No 15 /Area B	Float	X = 606335	Y = 5848142	3	Grab of float. Galena evident in siltstone.	N
4544	Keit-o17-02	Fig No 15 /Area B	Float	X = 606486	Y = 5848264	3	Grab of float. Galena evident in siltstone.	N
4545	Keit-o17-02a	Fig No 15 /Area B	Float	X = 606486	Y = 5848264	3	Grab of float. Galena evident in siltstone.	N
4546	Keit-o17-02b	Fig No 15 /Area B	Float	X = 606486	Y = 5848264	1	Grab of float. Siltstone.	N
4547	Keit-o17-03	Fig No 15 /Area B	Float	X = 606491	Y = 5848393	3	Grab of float. Galena evident in siltstone.	N
4548	Keit-o17-03a	Fig No 15 /Area B	Float	X = 606491	Y = 5848393	3	Grab of float. Galena evident in siltstone.	N
4549	Keit-o17-03b	Fig No 15 /Area B	Float	X = 606491	Y = 5848393	3	Grab of float. Galena evident in siltstone.	N
4550	Keit-o17-04	Fig No 15 /Area B	Float	X = 606668	Y = 5848420	3	Grab of float. Galena evident in siltstone.	N
4551	Keit-o17-04a	Fig No 15 /Area B	Float	X = 606668	Y = 5848420	3	Grab of float. Galena evident in siltstone.	N
4552	Keit-o17-04b	Fig No 15 /Area B	Float	X = 606668	Y = 5848420	3	Grab of float. Galena evident in siltstone.	N
4553	Keit-o17-05	Fig No 15 /Area B	Float	X = 606782	Y = 5848552	3	Grab of float. Galena evident in siltstone.	N
4554	Keit-o17-05a	Fig No 15 /Area B	Float	X = 606782	Y = 5848552	3	Grab of float. Galena evident in siltstone.	N
4555	Keit-o17-05b	Fig No 15 /Area B	Float	X = 606782	Y = 5848552	3	Grab of float. Galena evident in siltstone.	N
4556	Keit-o17-06	Fig No 15 /Area B	Float	X = 606386	Y = 5847999	3	Grab of float. Galena evident in siltstone.	N
4557	Keit-o17-06a	Fig No 15 /Area B	Float	X = 606386	Y = 5847999	1	Grab of float. Siltstone.	N
4558	Keit-o17-06b	Fig No 15 /Area B	Float	X = 606386	Y = 5847999	1	Grab of float. Siltstone.	N
4559	Keit-o17-07	Fig No 15 /Area B	Float	X = 606519	Y = 5847996	1	Grab of float. Siltstone.	N
4560	Keit-o17-07a	Fig No 15 /Area B	Float	X = 606519	Y = 5847996	1	Grab of float. Siltstone.	N
4561	Keit-o17-07b	Fig No 15 /Area B	Float	X = 606519	Y = 5847996	1	Grab of float. Siltstone.	N
4562	Keit-o17-08	Fig No 15 /Area B	Float	X = 606660	Y = 5848036	1	Grab of float. Siltstone.	N
4563	Keit-o17-08a	Fig No 15 /Area B	Float	X = 606660	Y = 5848036	1	Grab of float. Siltstone.	N
4564	Keit-o17-08b	Fig No 15 /Area B	Float	X = 606660	Y = 5848036	3	Grab of float. Galena evident in siltstone.	N
4565	Keit-o17-09	Fig No 15 /Area B	Float	X = 606844	Y = 5848170	3	Grab of float. Galena evident in siltstone.	N
4566	Keit-o17-09a	Fig No 15 /Area B	Float	X = 606844	Y = 5848170	3	Grab of float. Galena evident in siltstone.	N
4567	Keit-o17-09b	Fig No 15 /Area B	Float	X = 606844	Y = 5848170	3	Grab of float. Galena evident in siltstone.	N
4568	Keit-f17-10	Fig No 15 /Area B	Float	X = 606923	Y = 5848135	1	Grab of float. Siltstone.	N

Table No. 2
Cariboo Lake Project Sample Coordinates and Descriptions

XRF No.	Field No.	Fig. No. / Area	Type	Easting (X)	Northing (Y)	XRF Target and Description and Comment	Magnetic
4569	Keit-f17-10a	Fig No 15 /Area B	Float	X = 606923	Y = 5848135	1 Grab of float. Siltstone.	N
4570	Keit-f17-10b	Fig No 15 /Area B	Float	X = 606923	Y = 5848135	1 Grab of float. Siltstone.	N
4571	Keit-f17-11	Fig No 15 /Area B	Float	X = 606617	Y = 5847962	3 Grab of float. Galena evident in siltstone.	N
4572	Keit-f17-11a	Fig No 15 /Area B	Float	X = 606617	Y = 5847962	1 Grab of float. Siltstone.	N
4573	Keit-f17-11b	Fig No 15 /Area B	Float	X = 606617	Y = 5847962	1 Grab of float. Siltstone.	N
4574	Keit-f17-12	Fig No 16 /Area C	Float	X = 606191	Y = 5849517	1 Grab of float. Siltstone.	N
4575	Keit-f17-12a	Fig No 16 /Area C	Float	X = 606191	Y = 5849517	3 Grab of float. Galena evident in siltstone.	N
4576	Keit-f17-12b	Fig No 16 /Area C	Float	X = 606191	Y = 5849517	1 Grab of float. Siltstone.	N
4577	Keit-f17-13	Fig No 16 /Area C	Float	X = 606323	Y = 5849538	1 Grab of float. Siltstone.	N
4578	Keit-f17-13a	Fig No 16 /Area C	Float	X = 606323	Y = 5849538	1 Grab of float. Siltstone.	N
4579	Keit-f17-13b	Fig No 16 /Area C	Float	X = 606323	Y = 5849538	1 Grab of float. Siltstone.	N
4580	Keit-f17-14	Fig No 16 /Area C	Float	X = 606401	Y = 5849604	1 Grab of float. Siltstone.	N
4581	Keit-f17-14a	Fig No 16 /Area C	Float	X = 606401	Y = 5849604	1 Grab of float. Siltstone.	N
4582	Keit-f17-14b	Fig No 16 /Area C	Float	X = 606401	Y = 5849604	1 Grab of float. Siltstone.	N
4583	Keit-f17-15	Fig No 16 /Area C	Float	X = 606515	Y = 5849610	1 Grab of float. Siltstone.	N
4584	Keit-f17-15a	Fig No 16 /Area C	Float	X = 606515	Y = 5849610	1 Grab of float. Siltstone.	N
4585	Keit-f17-15b	Fig No 16 /Area C	Float	X = 606515	Y = 5849610	1 Grab of float. Siltstone.	N
4586	Keit-f17-16	Fig No 16 /Area C	Float	X = 606508	Y = 5849413	1 Grab of float. Siltstone.	N
4587	Keit-f17-16a	Fig No 16 /Area C	Float	X = 606508	Y = 5849413	1 Grab of float. Siltstone.	N
4588	Keit-f17-16b	Fig No 16 /Area C	Float	X = 606508	Y = 5849413	1 Grab of float. Siltstone.	N
4589	Keit-f17-17	Fig No 16 /Area C	Float	X = 606318	Y = 5849410	1 Grab of float. Siltstone.	N
4590	Keit-f17-17a	Fig No 16 /Area C	Float	X = 606318	Y = 5849410	1 Grab of float. Siltstone.	N
4591	Keit-f17-17b	Fig No 16 /Area C	Float	X = 606318	Y = 5849410	1 Grab of float. Siltstone.	N
4592	Keit-f17-18	Fig No 14 /Area A	Float	X = 608466	Y = 5847560	1 Grab of float. Siltstone.	N
4593	Keit-f17-18a	Fig No 14 /Area A	Float	X = 608466	Y = 5847560	1 Grab of float. Siltstone.	N
4594	Keit-f17-18b	Fig No 14 /Area A	Float	X = 608466	Y = 5847560	1 Grab of float. Siltstone.	N
4595	Keit-f17-19	Fig No 14 /Area A	Float	X = 608395	Y = 5847679	1 Grab of float. Siltstone.	N
4596	Keit-f17-19b	Fig No 14 /Area A	Float	X = 608395	Y = 5847679	3 Grab of float. Galena evident in siltstone.	N
4597	Keit-f17-20	Fig No 14 /Area A	Float	X = 608289	Y = 5847696	1 Grab of float. Siltstone.	N
4598	Keit-f17-20a	Fig No 14 /Area A	Float	X = 608289	Y = 5847696	1 Grab of float. Siltstone.	N
4599	Keit-f17-21	Fig No 14 /Area A	Float	X = 608170	Y = 5847603	1 Grab of float. Siltstone.	N
4600	Keit-f17-21a	Fig No 14 /Area A	Float	X = 608170	Y = 5847603	1 Grab of float. Siltstone.	N
4601	Keit-f17-21b	Fig No 14 /Area A	Float	X = 608170	Y = 5847603	1 Grab of float. Siltstone.	N
4602	Keit-f17-20b	Fig No 14 /Area A	Float	X = 608289	Y = 5847696	1 Grab of float. Siltstone.	N
4603	Keit-f17-19a	Fig No 14 /Area A	Float	X = 608395	Y = 5847679	1 Grab of float. Siltstone.	N

Table No. 2
Cariboo Lake Project Sample Coordinates and Descriptions

XRF No.	Field No.	Fig. No. / Area	Type	Easting (X)	Northing (Y)	XRF Target and Description and Comment	Magnetic
4604	Keit-f17-22	Fig No 14 /Area A	Float	X = 608167	Y = 5847426	1 Grab of float. Siltstone.	N
4605	Keit-f17-22a	Fig No 14 /Area A	Float	X = 608167	Y = 5847426	1 Grab of float. Siltstone.	N
4606	Keit-f17-22b	Fig No 14 /Area A	Float	X = 608167	Y = 5847426	1 Grab of float. Siltstone.	N
4607	Keit-f17-23	Fig No 14 /Area A	Float	X = 608283	Y = 584739	1 Grab of float. Siltstone.	N
4608	Keit-f17-23a	Fig No 14 /Area A	Float	X = 608283	Y = 584739	1 Grab of float. Siltstone.	N
4609	Keit-f17-23b	Fig No 14 /Area A	Float	X = 608283	Y = 584739	1 Grab of float. Siltstone.	N
4610	Keit-f17-24	Fig No 14 /Area A	Float	X = 607485	Y = 5847243	1 Grab of float. Siltstone.	N
4611	Keit-f17-24b	Fig No 14 /Area A	Float	X = 607485	Y = 5847243	1 Grab of float. Siltstone.	N
4612	Keit-f17-25	Fig No 14 /Area A	Float	X = 607562	Y = 5847185	1 Grab of float. Siltstone.	N
4613	Keit-f17-24a	Fig No 14 /Area A	Float	X = 607485	Y = 5847243	1 Grab of float. Siltstone.	N
4614	Keit-f17-25a	Fig No 14 /Area A	Float	X = 607562	Y = 5847185	1 Grab of float. Siltstone.	N
4615	Keit-f17-25b	Fig No 14 /Area A	Float	X = 607562	Y = 5847185	1 Grab of float. Siltstone.	N
4616	Keit-f17-26	Fig No 14 /Area A	Float	X = 607623	Y = 5847125	1 Grab of float. Siltstone.	N
4617	Keit-f17-26a	Fig No 14 /Area A	Float	X = 607623	Y = 5847125	1 Grab of float. Siltstone.	N
4618	Keit-f17-26b	Fig No 14 /Area A	Float	X = 607623	Y = 5847125	1 Grab of float. Siltstone.	N
4619	Keit-f17-27	Fig No 14 /Area A	Float	X = 607640	Y = 5847024	1 Grab of float. Siltstone.	N
4620	Keit-f17-27a	Fig No 14 /Area A	Float	X = 607640	Y = 5847024	1 Grab of float. Siltstone.	N
4621	Keit-f17-27b	Fig No 14 /Area A	Float	X = 607640	Y = 5847024	1 Grab of float. Siltstone.	N
4622	Keit-f17-28	Fig No 14 /Area A	Float	X = 607563	Y = 5846960	1 Grab of float. Siltstone.	N
4623	Keit-f17-28a	Fig No 14 /Area A	Float	X = 607563	Y = 5846960	1 Grab of float. Siltstone.	N
4624	Keit-f17-28b	Fig No 14 /Area A	Float	X = 607563	Y = 5846960	1 Grab of float. Siltstone.	N
4625	Keit-f17-29	Fig No 14 /Area A	Float	X = 607994	Y = 5847176	1 Grab of float. Siltstone.	N
4626	Keit-f17-29a	Fig No 14 /Area A	Float	X = 607994	Y = 5847176	1 Grab of float. Siltstone.	N
4627	Keit-f17-29b	Fig No 14 /Area A	Float	X = 607994	Y = 5847176	1 Grab of float. Siltstone.	N
4628	Keit-f17-30	Fig No 14 /Area A	Float	X = 607923	Y = 5847208	1 Grab of float. Siltstone.	N
4629	Keit-f17-30a	Fig No 14 /Area A	Float	X = 607923	Y = 5847208	1 Grab of float. Siltstone.	N
4630	Keit-f17-30b	Fig No 14 /Area A	Float	X = 607923	Y = 5847208	1 Grab of float. Siltstone.	N
4631	Keit-f17-31	Fig No 14 /Area A	Float	X = 607850	Y = 5847220	1 Grab of float. Siltstone.	N
4632	Keit-f17-31a	Fig No 14 /Area A	Float	X = 607850	Y = 5847220	1 Grab of float. Siltstone.	N
4633	Keit-f17-31b	Fig No 14 /Area A	Float	X = 607850	Y = 5847220	1 Grab of float. Siltstone.	N
4634	Keit-f17-32	Fig No 14 /Area A	Float	X = 607827	Y = 5847337	1 Grab of float. Siltstone.	N
4635	Keit-f17-32a	Fig No 14 /Area A	Float	X = 607827	Y = 5847337	1 Grab of float. Siltstone.	N
4636	Keit-f17-32b	Fig No 14 /Area A	Float	X = 607827	Y = 5847337	1 Grab of float. Siltstone.	N
4637	Keit-f17-33	Fig No 14 /Area A	Float	X = 607920	Y = 5847380	1 Grab of float. Siltstone.	N
4638	Keit-f17-33a	Fig No 14 /Area A	Float	X = 607920	Y = 5847380	1 Grab of float. Siltstone.	N

Table No. 2
Cariboo Lake Project Sample Coordinates and Descriptions

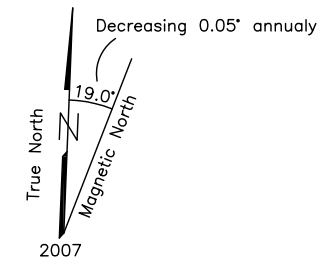
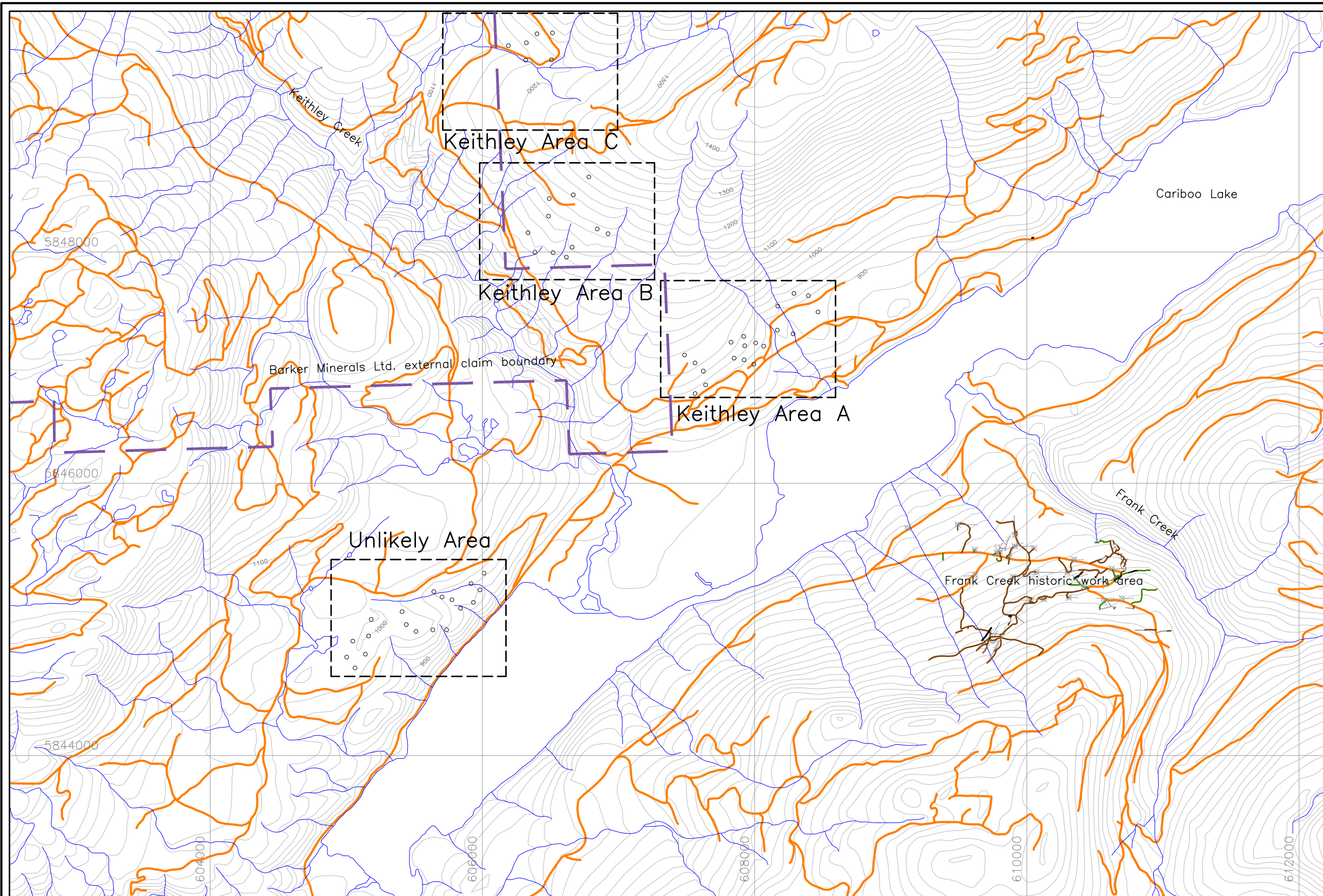
XRF No.	Field No.	Fig. No. / Area	Type	Easting (X)	Northing (Y)	XRF Target and Description and Comment	Magnetic
4639	Keit-f17-33b	Fig No 14 /Area A	Float	X = 607920	Y = 5847380	1 Grab of float. Siltstone.	N
4640	Keit-f17-34	Fig No 14 /Area A	Float	X = 607927	Y = 5847311	1 Grab of float. Siltstone.	N
4641	Keit-f17-34a	Fig No 14 /Area A	Float	X = 607927	Y = 5847311	1 Grab of float. Siltstone.	N
4642	Keit-f17-34b	Fig No 14 /Area A	Float	X = 607927	Y = 5847311	1 Grab of float. Siltstone.	N
4643	Keit-f17-35	Fig No 14 /Area A	Float	X = 608007	Y = 5847332	1 Grab of float. Siltstone.	N
4644	Keit-f17-35a	Fig No 14 /Area A	Float	X = 608007	Y = 5847332	1 Grab of float. Siltstone.	N
4645	Keit-f17-35b	Fig No 14 /Area A	Float	X = 608007	Y = 5847332	1 Grab of float. Siltstone.	N
4646	Keit-f17-36	Fig No 14 /Area A	Float	X = 608067	Y = 5847308	1 Grab of float. Siltstone.	N
4647	Keit-f17-36a	Fig No 14 /Area A	Float	X = 608067	Y = 5847308	1 Grab of float. Siltstone.	N
4648	Keit-f17-36b	Fig No 14 /Area A	Float	X = 608067	Y = 5847308	1 Grab of float. Siltstone.	N
Unlikely Rock Sampling							
4649	aUnl-f17-01	Fig No 13	Float	X = 605643	Y = 5845505	1 Grab of float. Siltstone.	N
4650	aUnl-f17-01a	Fig No 13	Float	X = 605643	Y = 5845505	1 Grab of float. Siltstone.	N
4651	aUnl-f17-01	Fig No 13	Float	X = 605643	Y = 5845505	1 Grab of float. Siltstone.	N
4652	aUnl-f17-01b	Fig No 13	Float	X = 605643	Y = 5845505	1 Grab of float. Siltstone.	N
4653	aUnl-f17-02	Fig No 13	Float	X = 605704	Y = 5845465	1 Grab of float. Siltstone.	N
4654	aUnl-f17-02a	Fig No 13	Float	X = 605704	Y = 5845465	1 Grab of float. Siltstone.	N
4655	aUnl-f17-02b	Fig No 13	Float	X = 605704	Y = 5845465	1 Grab of float. Siltstone.	N
4656	aUnl-f17-03	Fig No 13	Float	X = 605776	Y = 5845445	1 Grab of float. Siltstone.	N
4657	aUnl-f17-03a	Fig No 13	Float	X = 605776	Y = 5845445	1 Grab of float. Siltstone.	N
4658	aUnl-f17-03b	Fig No 13	Float	X = 605776	Y = 5845445	1 Grab of float. Siltstone.	N
4659	aUnl-f17-04	Fig No 13	Float	X = 605839	Y = 5845382	1 Grab of float. Andesitic volcanic.	N
4660	aUnl-f17-04a	Fig No 13	Float	X = 605839	Y = 5845382	1 Grab of float. Andesitic volcanic.	N
4661	aUnl-f17-04b	Fig No 13	Float	X = 605839	Y = 5845382	1 Grab of float. Andesitic volcanic.	N
4662	aUnl-f17-05	Fig No 13	Float	X = 605934	Y = 5845425	1 Grab of float. Andesitic volcanic.	N
4663	aUnl-f17-05a	Fig No 13	Float	X = 605934	Y = 5845425	1 Grab of float. Andesitic volcanic.	N
4664	aUnl-f17-05b	Fig No 13	Float	X = 605934	Y = 5845425	1 Grab of float. Andesitic volcanic.	N
4665	aUnl-f17-06	Fig No 13	Float	X = 605982	Y = 5845517	1 Grab of float. Andesitic volcanic.	N
4666	aUnl-f17-06a	Fig No 13	Float	X = 605982	Y = 5845517	1 Grab of float. Andesitic volcanic.	N
4667	aUnl-f17-06b	Fig No 13	Float	X = 605982	Y = 5845517	1 Grab of float. Andesitic volcanic.	N
4668	aUnl-f17-07	Fig No 13	Float	X = 605917	Y = 5845563	1 Grab of float. Andesitic volcanic.	N
4669	aUnl-f17-07a	Fig No 13	Float	X = 605917	Y = 5845563	1 Grab of float. Andesitic volcanic.	N
4670	aUnl-f17-07b	Fig No 13	Float	X = 605917	Y = 5845563	1 Grab of float. Andesitic volcanic.	N
4671	aUnl-f17-08	Fig No 13	Float	X = 606012	Y = 5845640	1 Grab of float. Andesitic volcanic.	N

Table No. 2
Cariboo Lake Project Sample Coordinates and Descriptions

XRF No.	Field No.	Fig. No. / Area	Type	Easting (X)	Northing (Y)	XRF Target and Description and Comment	Magnetic
4672	aUnl-f17-08a	Fig No 13	Float	X = 606012	Y = 5845640	1 Grab of float. Andesitic volcanic.	N
4673	aUnl-f17-08b	Fig No 13	Float	X = 606012	Y = 5845640	1 Grab of float. Andesitic volcanic.	N
4674	aUnl-f17-09	Fig No 13	Float	X = 605410	Y = 5845357	1 Grab of float. Andesitic volcanic.	N
4675	aUnl-f17-09a	Fig No 13	Float	X = 605410	Y = 5845357	1 Grab of float. Andesitic volcanic.	N
4676	aUnl-f17-09b	Fig No 13	Float	X = 605410	Y = 5845357	1 Grab of float. Andesitic volcanic.	N
4677	aUnl-f17-10	Fig No 13	Float	X = 605441	Y = 5845262	1 Grab of float. Andesitic volcanic.	N
4678	aUnl-f17-10a	Fig No 13	Float	X = 605441	Y = 5845262	1 Grab of float. Andesitic volcanic.	N
4679	aUnl-f17-10b	Fig No 13	Float	X = 605441	Y = 5845262	1 Grab of float. Andesitic volcanic.	N
4680	aUnl-f17-11	Fig No 13	Float	X = 605512	Y = 5845212	1 Grab of float. Andesitic volcanic.	N
4681	aUnl-f17-11a	Fig No 13	Float	X = 605512	Y = 5845212	1 Grab of float. Andesitic volcanic.	N
4682	aUnl-f17-11b	Fig No 13	Float	X = 605512	Y = 5845212	1 Grab of float. Andesitic volcanic.	N
4683	aUnl-f17-12	Fig No 13	Float	X = 605636	Y = 5845223	1 Grab of float. Andesitic volcanic.	N
4684	aUnl-f17-12a	Fig No 13	Float	X = 605636	Y = 5845223	1 Grab of float. Andesitic volcanic.	N
4685	aUnl-f17-12b	Fig No 13	Float	X = 605636	Y = 5845223	1 Grab of float. Andesitic volcanic.	N
4686	aUnl-f17-13	Fig No 13	Float	X = 605737	Y = 5845224	1 Grab of float. Andesitic volcanic.	N
4687	aUnl-f17-13a	Fig No 13	Float	X = 605737	Y = 5845224	1 Grab of float. Andesitic volcanic.	N
4688	aUnl-f17-13b	Fig No 13	Float	X = 605737	Y = 5845224	1 Grab of float. Andesitic volcanic.	N
4689	aUnl-f17-14	Fig No 13	Float	X = 605183	Y = 5845300	1 Grab of float. Andesitic volcanic.	N
4690	aUnl-f17-14a	Fig No 13	Float	X = 605183	Y = 5845300	1 Grab of float. Andesitic volcanic.	N
4691	aUnl-f17-14b	Fig No 13	Float	X = 605183	Y = 5845300	1 Grab of float. Andesitic volcanic.	N
4692	aUnl-f17-15	Fig No 13	Float	X = 605164	Y = 5845179	1 Grab of float. Andesitic volcanic.	N
4693	aUnl-f17-15a	Fig No 13	Float	X = 605164	Y = 5845179	1 Grab of float. Andesitic volcanic.	N
4694	aUnl-f17-15b	Fig No 13	Float	X = 605164	Y = 5845179	1 Grab of float. Andesitic volcanic.	N
4695	aUnl-f17-16	Fig No 13	Float	X = 605140	Y = 5845045	1 Grab of float. Andesitic volcanic.	N
4696	aUnl-f17-16a	Fig No 13	Float	X = 605140	Y = 5845045	1 Grab of float. Andesitic volcanic.	N
4697	aUnl-f17-16b	Fig No 13	Float	X = 605140	Y = 5845045	1 Grab of float. Andesitic volcanic.	N
4698	aUnl-f17-17	Fig No 13	Float	X = 605064	Y = 5844944	1 Grab of float. Andesitic volcanic.	N
4699	aUnl-f17-17a	Fig No 13	Float	X = 605064	Y = 5844944	1 Grab of float. Andesitic volcanic.	N
4700	aUnl-f17-17b	Fig No 13	Float	X = 605064	Y = 5844944	1 Grab of float. Andesitic volcanic.	N
4701	aUnl-f17-18	Fig No 13	Float	X = 605003	Y = 5845023	1 Grab of float. Andesitic volcanic.	N
4702	aUnl-f17-18a	Fig No 13	Float	X = 605003	Y = 5845023	1 Grab of float. Andesitic volcanic.	N
4703	aUnl-f17-18b	Fig No 13	Float	X = 605003	Y = 5845023	1 Grab of float. Andesitic volcanic.	N
4704	aUnl-f17-19	Fig No 13	Float	X = 605048	Y = 5845141	1 Grab of float. Andesitic volcanic.	N
4705	aUnl-f17-19a	Fig No 13	Float	X = 605048	Y = 5845141	1 Grab of float. Andesitic volcanic.	N
4706	aUnl-f17-19b	Fig No 13	Float	X = 605048	Y = 5845141	1 Grab of float. Andesitic volcanic.	N

APPENDIX G





Cariboo Lake Property Maps and XRF Data Tables

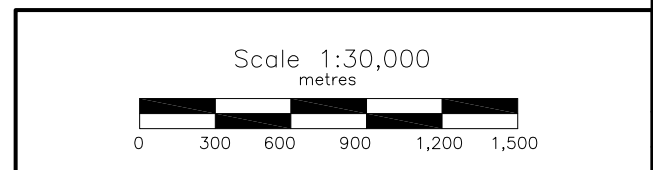


UTM Coordinate System
 Map Datum: NAD 83
 Zone: 10

For Unlikely Area see Figure No. 13
 For Keithley Area see Figure Nos. 14,15,16

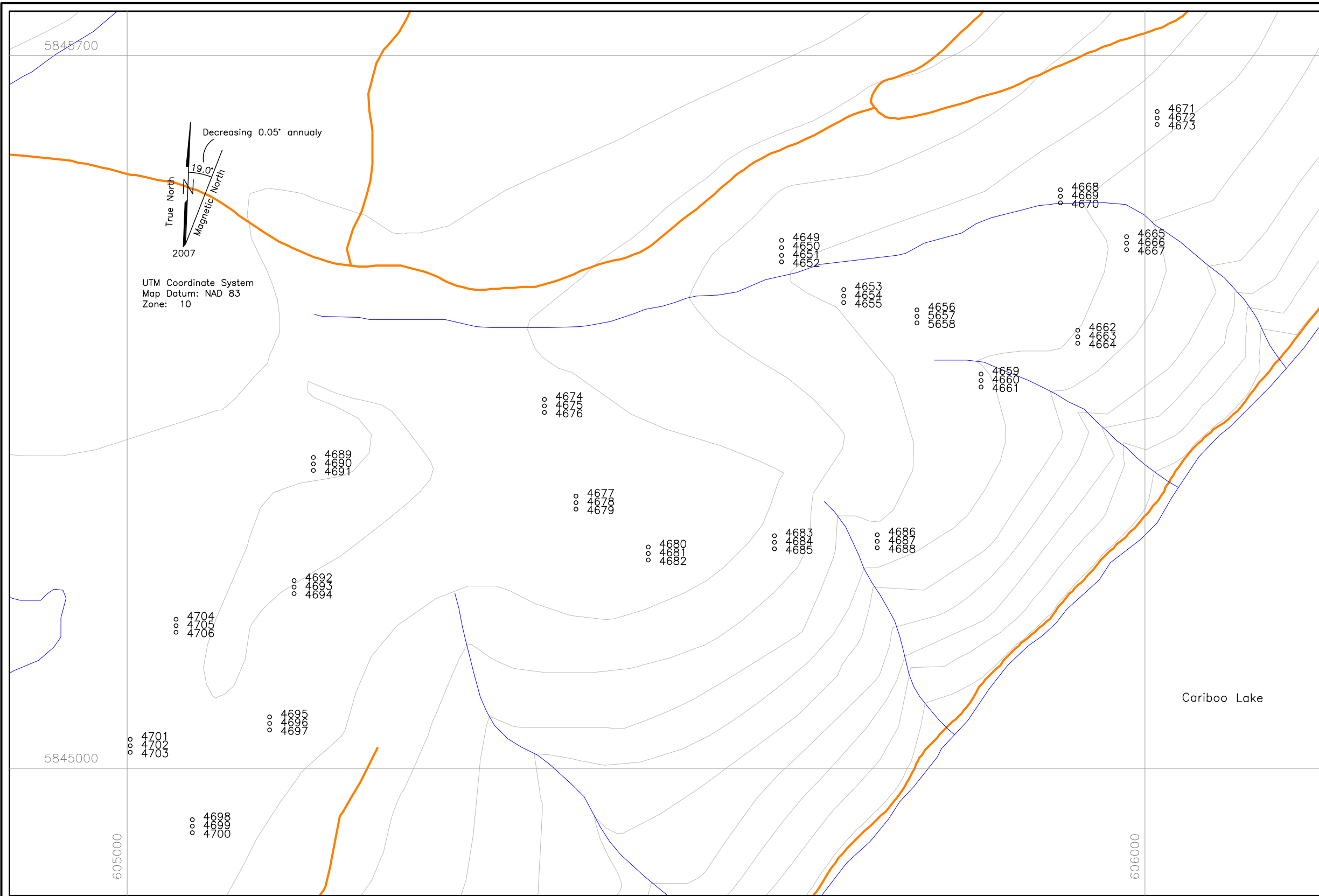
LEGEND

-  Topographic Contour & Elevation
Contour interval 20 metres
-  Creek, Pond
-  Road
-  2018 sampling location



BARKER MINERALS LTD.
 Cariboo Lake Property
 Keymap
 of Unlikely and Keithley Areas
 Cariboo Mining Division, B.C.

NTS Mapsheet: 93 A/14 Date: November 25, 2018
 Fig.No. 12



Cariboo Lake Property
Unlikely Area
Rock Samples XRF Results (ppm)

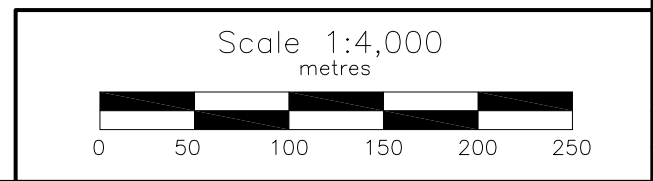
XRF No.	Zn	Cu
4649		34
4650	180	
4651	160	
4652	170	47
4653	286	79
4654	192	84
4655	176	55
4656	181	
4657	112	91
4658	112	26
4659	225	109
4660	56	104
4661	87	85
4662	105	293
4663	33	81
4664	48	193
4665	67	118
4666	51	181
4667	47	137
4668	76	394
4669	87	21
4670	41	108
4671	22	71
4672	51	130
4673	26	70
4674	114	
4675	54	
4676	37	70
4677	19	
4678	78	146
4679	61	82
4680	68	33
4681	30	39
4682	72	139
4683	63	280
4684	78	337
4685	38	41
4686	12	
4687	28	211
4688	46	137
4689	82	286
4690	183	84
4691	109	92
4692	42	490
4693	35	59
4694	121	637
4695	113	1611
4696	21	90
4697	63	35
4698	31	40
4699	77	116
4700	34	57
4701	259	
4702	288	
4703	581	493
4704	332	236
4705	334	346
4706	185	

Results over 100 ppm marked in red.

Values below level of detection are not shown.
See Table No. 3 for XRF results.

LEGEND

- Topographic Contour & Elevation
Contour interval 20 metres
- Road
- Creek, Pond
- 2018 sample location and number



BARKER MINERALS LTD.

Cariboo Lake Property

Unlikely Area

Sample Numbers and

Zn, Cu Geochemistry

Cariboo Mining Division, B.C.

NTS Mapsheet: 93 A/14

Date: November 26, 2018

Fig.No. 13

Table No. 3
Unlikely Area - Rock XRF Sampling Results

XRF No.	Fig. No./Area	Type	Units	Field No.	Mo	Zr	Sr	U	Rb	Th	Pb	Se	As	Hg	Au	Zn	W	Cu	Ni	Co	Fe	Mn	Sb	Sn	Cd	Ag	Nb	Y	Bi	Cr	V	Ti	
					In all cases <LOD means below level of detection.											Values for Zn and Cu over 100 ppm are coloured red.																	
4649	Fig No. 10	float	ppm	aUnl-f17-01	< LOD	< LOD	< LOD	438	< LOD	< LOD	< LOD	< LOD	< LOD	< LOD	< LOD	< LOD	< LOD	< LOD	< LOD	< LOD	< LOD	< LOD	< LOD	< LOD	< LOD	< LOD	< LOD	< LOD	< LOD	< LOD	< LOD	< LOD	< LOD
4650	Fig No. 10	float	ppm	aUnl-f17-01a	9	97	49	< LOD	3	18	< LOD	< LOD	57	< LOD	< LOD	180	< LOD	34	450	< LOD	133999	< LOD	30	< LOD	< LOD	< LOD	20	< LOD	< LOD	755	132	6002	
4651	Fig No. 10	float	ppm	aUnl-f17-01	8	81	113	< LOD	< LOD	19	< LOD	< LOD	70	< LOD	< LOD	160	< LOD	< LOD	281	< LOD	119825	< LOD	45	< LOD	< LOD	< LOD	20	2	< LOD	< LOD	< LOD	< LOD	
4652	Fig No. 10	float	ppm	aUnl-f17-01b	< LOD	63	70	< LOD	3	< LOD	< LOD	< LOD	135	< LOD	< LOD	170	< LOD	47	509	< LOD	140176	2381	< LOD	< LOD	< LOD	< LOD	13	< LOD	< LOD	< LOD	< LOD	6289	
4653	Fig No. 10	float	ppm	aUnl-f17-02	11	127	24	14	7	23	< LOD	< LOD	< LOD	< LOD	< LOD	286	< LOD	79	< LOD	< LOD	176402	< LOD	54	80	< LOD	< LOD	27	3	< LOD	< LOD	< LOD	4561	
4654	Fig No. 10	float	ppm	aUnl-f17-02a	10	78	12	< LOD	19	< LOD	< LOD	< LOD	< LOD	< LOD	< LOD	192	< LOD	84	< LOD	< LOD	132315	< LOD	< LOD	< LOD	< LOD	< LOD	18	< LOD	< LOD	< LOD	< LOD	< LOD	
4655	Fig No. 10	float	ppm	aUnl-f17-02b	9	68	21	< LOD	12	< LOD	< LOD	< LOD	< LOD	< LOD	< LOD	176	< LOD	55	172	< LOD	115101	< LOD	< LOD	< LOD	< LOD	< LOD	15	< LOD	< LOD	< LOD	< LOD	< LOD	
4656	Fig No. 10	float	ppm	aUnl-f17-03	5	108	48	< LOD	2	17	< LOD	< LOD	53	< LOD	< LOD	181	< LOD	< LOD	545	< LOD	98841	< LOD	27	33	< LOD	< LOD	21	2	< LOD	827	< LOD	4687	
4657	Fig No. 10	float	ppm	aUnl-f17-03a	< LOD	81	25	7	62	13	< LOD	< LOD	< LOD	< LOD	< LOD	112	< LOD	91	160	< LOD	85516	< LOD	< LOD	128	< LOD	< LOD	14	< LOD	< LOD	< LOD	< LOD	< LOD	
4658	Fig No. 10	float	ppm	aUnl-f17-03b	< LOD	90	25	9	74	13	< LOD	< LOD	< LOD	< LOD	< LOD	112	< LOD	26	122	< LOD	56967	< LOD	< LOD	109	< LOD	< LOD	13	< LOD	< LOD	< LOD	< LOD	< LOD	
4659	Fig No. 10	float	ppm	aUnl-f17-04	5	53	23	10	21	< LOD	25	< LOD	22	< LOD	< LOD	225	< LOD	109	< LOD	< LOD	250501	2396	< LOD	< LOD	< LOD	< LOD	11	< LOD	< LOD	< LOD	< LOD	< LOD	
4660	Fig No. 10	float	ppm	aUnl-f17-04a	< LOD	8	6	< LOD	5	< LOD	< LOD	< LOD	< LOD	< LOD	< LOD	56	< LOD	104	< LOD	< LOD	101242	< LOD	< LOD	< LOD	< LOD	< LOD	4	< LOD	< LOD	< LOD	< LOD	< LOD	
4661	Fig No. 10	float	ppm	aUnl-f17-04b	< LOD	116	24	< LOD	106	22	< LOD	< LOD	< LOD	< LOD	< LOD	87	< LOD	85	93	< LOD	44870	< LOD	104	< LOD	< LOD	< LOD	17	< LOD	< LOD	< LOD	< LOD	< LOD	
4662	Fig No. 10	float	ppm	aUnl-f17-05	< LOD	< LOD	356	9	9	< LOD	< LOD	< LOD	< LOD	< LOD	< LOD	105	< LOD	293	< LOD	1387	43528	< LOD	60	64	< LOD	< LOD	< LOD	< LOD	< LOD	< LOD	< LOD	< LOD	
4663	Fig No. 10	float	ppm	aUnl-f17-05a	< LOD	< LOD	26	< LOD	2	< LOD	< LOD	< LOD	< LOD	< LOD	< LOD	33	< LOD	81	< LOD	< LOD	38025	< LOD	< LOD	< LOD	< LOD	< LOD	< LOD	< LOD	< LOD	< LOD	< LOD	< LOD	
4664	Fig No. 10	float	ppm	aUnl-f17-05b	< LOD	32	21	< LOD	9	< LOD	< LOD	< LOD	24	< LOD	< LOD	48	< LOD	193	< LOD	< LOD	159688	< LOD	< LOD	< LOD	< LOD	< LOD	4	< LOD	< LOD	< LOD	< LOD	< LOD	
4665	Fig No. 10	float	ppm	aUnl-f17-06	< LOD	145	35	14	3	< LOD	< LOD	< LOD	15	< LOD	< LOD	67	< LOD	118	74	< LOD	187164	< LOD	< LOD	< LOD	< LOD	< LOD	12	< LOD	< LOD	< LOD	< LOD	< LOD	
4666	Fig No. 10	float	ppm	aUnl-f17-06a	< LOD	< LOD	48	< LOD	< LOD	< LOD	< LOD	< LOD	7	< LOD	< LOD	51	< LOD	181	< LOD	< LOD	107127	< LOD	< LOD	< LOD	< LOD	< LOD	< LOD	< LOD	< LOD	< LOD	< LOD	< LOD	
4667	Fig No. 10	float	ppm	aUnl-f17-06b	< LOD	4	16	< LOD	< LOD	< LOD	< LOD	< LOD	< LOD	< LOD	< LOD	47	< LOD	137	< LOD	< LOD	109434	< LOD	< LOD	< LOD	< LOD	< LOD	< LOD	< LOD	< LOD	< LOD	< LOD	< LOD	
4668	Fig No. 10	float	ppm	aUnl-f17-07	< LOD	19	20	< LOD	3	< LOD	50	< LOD	< LOD	< LOD	< LOD	76	< LOD	394	284	< LOD	263289	< LOD	93	92	< LOD	< LOD	< LOD	< LOD	31	< LOD	< LOD	< LOD	
4669	Fig No. 10	float	ppm	aUnl-f17-07a	< LOD	38	16	< LOD	< LOD	12	24	< LOD	< LOD	< LOD	< LOD	87	< LOD	21	< LOD	< LOD	81501	310	< LOD	< LOD	< LOD	< LOD	5	< LOD	< LOD	< LOD	< LOD	< LOD	
4670	Fig No. 10	float	ppm	aUnl-f17-07b	< LOD	7	19	< LOD	< LOD	< LOD	< LOD	< LOD	< LOD	< LOD	< LOD	41	< LOD	108	< LOD	< LOD	121152	< LOD	< LOD	< LOD	< LOD	< LOD	< LOD	< LOD	< LOD	< LOD	< LOD	< LOD	
4671	Fig No. 10	float	ppm	aUnl-f17-08	< LOD	< LOD	13	< LOD	< LOD	< LOD	< LOD	< LOD	< LOD	< LOD	< LOD	22	< LOD	71	< LOD	< LOD	23081	137	< LOD	< LOD	< LOD	< LOD	< LOD	< LOD	< LOD	< LOD	< LOD	< LOD	
4672	Fig No. 10	float	ppm	aUnl-f17-08a	< LOD	10	7	< LOD	6	7	< LOD	< LOD	11	< LOD	< LOD	51	< LOD	130	138	< LOD	119382	419	< LOD	< LOD	< LOD	< LOD	< LOD	< LOD	< LOD	< LOD	< LOD	< LOD	
4673	Fig No. 10	float	ppm	aUnl-f17-08b	< LOD	< LOD	3	< LOD	< LOD	< LOD	< LOD	< LOD	< LOD	< LOD	< LOD	26	< LOD	70	< LOD	< LOD	97660	< LOD	< LOD	< LOD	< LOD	< LOD	< LOD	< LOD	< LOD	< LOD	< LOD	< LOD	
4674	Fig No. 10	float	ppm	aUnl-f17-09	7	6	10	< LOD	< LOD	< LOD	< LOD	< LOD	< LOD	< LOD	< LOD	114	351	< LOD	< LOD	< LOD	15847	< LOD	< LOD	< LOD	< LOD	< LOD	8	< LOD	< LOD	< LOD	< LOD	< LOD	
4675	Fig No. 10	float	ppm	aUnl-f17-09a	< LOD	< LOD	3	< LOD	< LOD	< LOD	< LOD	< LOD	< LOD	< LOD	< LOD	54	< LOD	< LOD	< LOD	< LOD	29527	< LOD	< LOD	< LOD	< LOD	< LOD	< LOD	< LOD	< LOD	< LOD	< LOD	< LOD	
4676	Fig No. 10	float	ppm	aUnl-f17-09b	< LOD	< LOD	2	< LOD	< LOD	< LOD	< LOD	< LOD	< LOD	< LOD	< LOD	37	< LOD	70	< LOD	< LOD	41748	< LOD	< LOD	< LOD	< LOD	< LOD	< LOD	< LOD	< LOD	< LOD	< LOD	< LOD	
4677	Fig No. 10	float	ppm	aUnl-f17-10	< LOD	11	2	< LOD	< LOD	< LOD	< LOD	< LOD	< LOD	< LOD	< LOD	19	< LOD	< LOD	< LOD	< LOD	4402	133	< LOD	< LOD	< LOD	< LOD	< LOD	< LOD	< LOD	< LOD	< LOD	< LOD	
4678	Fig No. 10	float	ppm	aUnl-f17-10a	10	72	35	< LOD	12	< LOD	< LOD	16	57	< LOD	< LOD	78	< LOD	146	109	< LOD	153227	< LOD	54	68	< LOD	< LOD	5	< LOD	< LOD	< LOD	< LOD	< LOD	
4679	Fig No. 10	float	ppm	aUnl-f17-10b	< LOD	66	21	< LOD	2	< LOD	< LOD	< LOD	30	< LOD	< LOD	61	< LOD	82	100	< LOD	156269	< LOD	< LOD	< LOD	< LOD	< LOD	4	< LOD	< LOD	< LOD	< LOD	< LOD	
4680	Fig No. 10	float	ppm	aUnl-f17-11	< LOD	14	12	< LOD	< LOD	< LOD	< LOD	< LOD	< LOD	< LOD	< LOD	68	< LOD	33	115	< LOD	124491	270	< LOD	< LOD	< LOD	< LOD	< LOD	< LOD	< LOD	< LOD	< LOD	< LOD	
4681	Fig No. 10	float	ppm	aUnl-f17-11a	< LOD	< LOD	6	< LOD	< LOD	< LOD	48	< LOD	10	< LOD	< LOD	30	< LOD	39	127	< LOD	80861	< LOD	< LOD	< LOD	< LOD	< LOD	< LOD	< LOD	< LOD	< LOD	< LOD	< LOD	
4682	Fig No. 10	float	ppm	aUnl-f17-11b	< LOD	9	11	< LOD	< LOD	< LOD	42	< LOD	< LOD	< LOD	< LOD	72	< LOD	139	224	< LOD	250212	388	23	< LOD	< LOD	< LOD	< LOD	35	< LOD	< LOD	< LOD	< LOD	
4683	Fig No. 10	float	ppm	aUnl-f17-12	< LOD	7	22	< LOD	6	< LOD	< LOD	< LOD	< LOD	< LOD	< LOD	63	< LOD	280	< LOD	< LOD	132534	< LOD	< LOD	< LOD	< LOD	< LOD	< LOD	< LOD	< LOD	< LOD	< LOD	< LOD	
4684	Fig No. 10	float	ppm	aUnl-f17-12a	< LOD	< LOD	30	< LOD	< LOD	< LOD	15	< LOD	9	< LOD	< LOD	78	< LOD	337	< LOD	< LOD	109001	1085	< LOD	< LOD	< LOD	< LOD	< LOD	< LOD	< LOD	< LOD	< LOD	< LOD	
4685	Fig No. 10	float	ppm	aUnl-f17-12b	< LOD	< LOD	45	< LOD	< LOD	< LOD	42	< LOD	8	9	< LOD	38	< LOD	41	117	< LOD	69205	< LOD	< LOD	< LOD	< LOD	< LOD	21	< LOD	< LOD	< LOD	< LOD	< LOD	
4686	Fig No. 10	float	ppm	aUnl-f17-13	< LOD	< LOD	2	< LOD	< LOD	< LOD	< LOD	< LOD	< LOD	< LOD	< LOD	12	< LOD	< LOD	< LOD	< LOD	9161	< LOD	< LOD	< LOD	< LOD	< LOD	< LOD	< LOD	< LOD	< LOD	< LOD	< LOD	
4687	Fig No. 10	float	ppm	aUnl-f17-13a	< LOD	42	29	< LOD	3	< LOD	20	18	102	< LOD	< LOD	28	< LOD	211	< LOD	< LOD	224166	< LOD	< LOD	< LOD	< LOD	< LOD	34	< LOD	< LOD	< LOD	< LOD	< LOD	
4688	Fig No																																

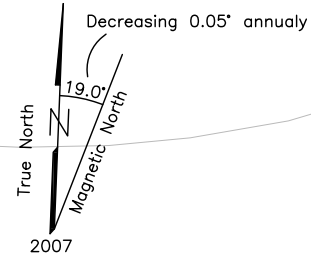
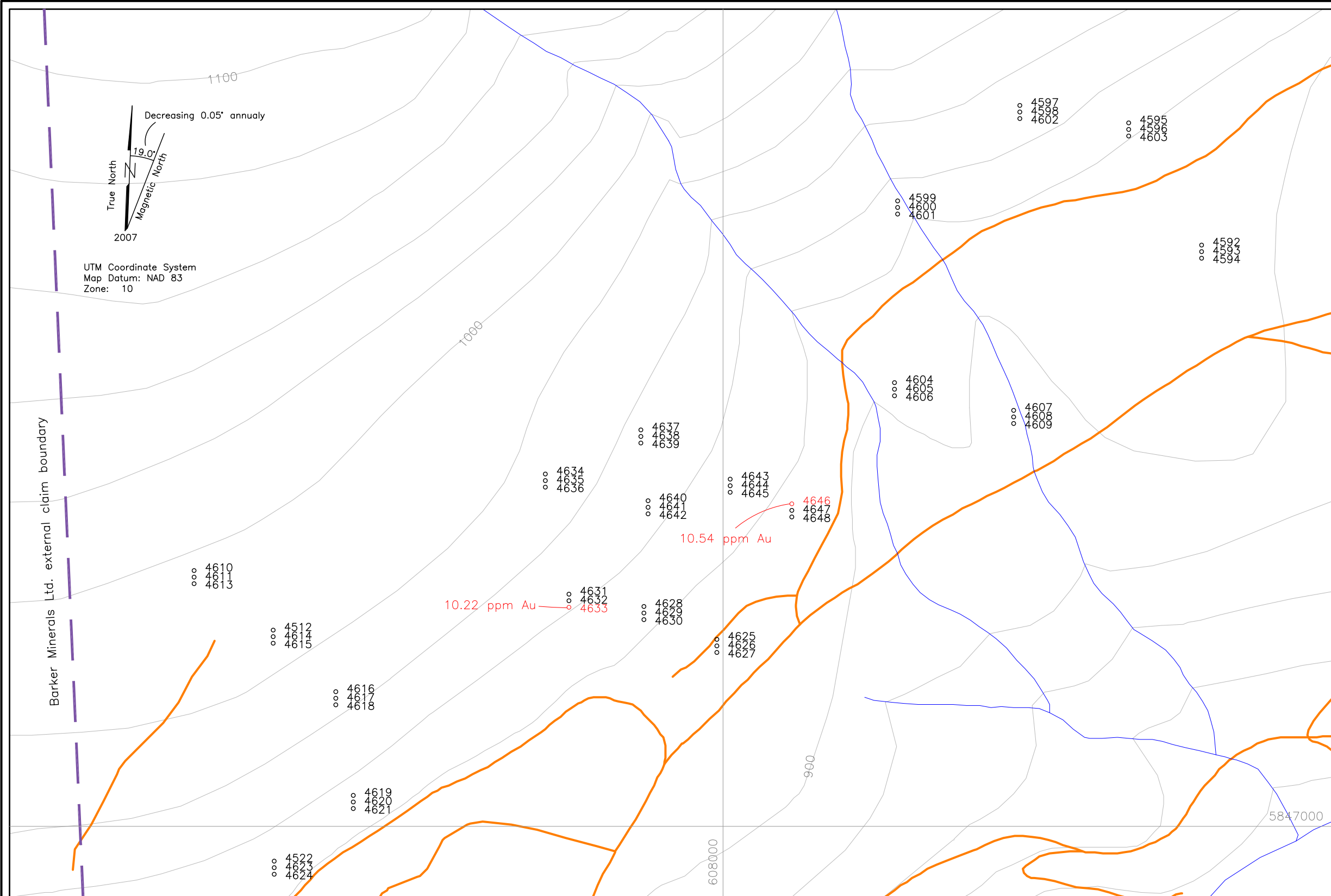
Table No. 3
Unlikely Area - Rock XRF Sampling Results

XRF No.	Fig. No./Area	Type	Units	Field No.	Mo	Zr	Sr	U	Rb	Th	Pb	Se	As	Hg	Au	Zn	W	Cu	Ni	Co	Fe	Mn	Sb	Sn	Cd	Ag	Nb	Y	Bi	Cr	V	Ti	
4695	Fig No. 10	float	ppm	aUnl-f17-16	6	33	106	< LOD	14	< LOD	121	< LOD	< LOD	< LOD	< LOD	113	< LOD	1611	171	< LOD	355386	< LOD	< LOD	90	< LOD	< LOD	7	< LOD	< LOD	< LOD	< LOD	< LOD	
4696	Fig No. 10	float	ppm	aUnl-f17-16a	< LOD	25	43	< LOD	< LOD	< LOD	< LOD	< LOD	< LOD	< LOD	< LOD	21	< LOD	90	82	< LOD	155852	< LOD	< LOD	< LOD	< LOD	< LOD	< LOD	< LOD	< LOD	< LOD	< LOD	< LOD	< LOD
4697	Fig No. 10	float	ppm	aUnl-f17-16b	< LOD	47	24	< LOD	< LOD	< LOD	< LOD	< LOD	< LOD	< LOD	< LOD	63	< LOD	35	< LOD	< LOD	79406	< LOD	< LOD	< LOD	< LOD	< LOD	6	< LOD	< LOD	< LOD	< LOD	< LOD	
4698	Fig No. 10	float	ppm	aUnl-f17-17	< LOD	42	5	< LOD	< LOD	< LOD	38	< LOD	< LOD	< LOD	< LOD	31	< LOD	40	< LOD	< LOD	37303	265	< LOD	< LOD	< LOD	< LOD	< LOD	< LOD	< LOD	< LOD	< LOD	< LOD	< LOD
4699	Fig No. 10	float	ppm	aUnl-f17-17a	6	104	18	< LOD	3	< LOD	41	< LOD	< LOD	< LOD	< LOD	77	< LOD	116	92	< LOD	211736	< LOD	< LOD	< LOD	< LOD	12	3	29	< LOD	< LOD	< LOD	< LOD	
4700	Fig No. 10	float	ppm	aUnl-f17-17b	< LOD	11	2	< LOD	< LOD	< LOD	< LOD	9	< LOD	9	< LOD	34	< LOD	57	157	< LOD	122330	434	< LOD	< LOD	< LOD	< LOD	< LOD	< LOD	< LOD	16	< LOD	< LOD	< LOD
4701	Fig No. 10	float	ppm	aUnl-f17-18	< LOD	87	14	< LOD	14	< LOD	< LOD	< LOD	464	< LOD	< LOD	259	< LOD	< LOD	< LOD	< LOD	263264	< LOD	< LOD	< LOD	< LOD	22	2	< LOD	119	< LOD	3103		
4702	Fig No. 10	float	ppm	aUnl-f17-18a	10	87	17	18	14	< LOD	< LOD	< LOD	396	< LOD	< LOD	288	< LOD	< LOD	< LOD	< LOD	242740	< LOD	< LOD	< LOD	< LOD	22	3	< LOD	< LOD	< LOD	< LOD	< LOD	
4703	Fig No. 10	float	ppm	aUnl-f17-18b	< LOD	51	10	< LOD	5	< LOD	< LOD	< LOD	< LOD	< LOD	< LOD	581	< LOD	493	111	< LOD	263501	< LOD	< LOD	< LOD	< LOD	7	< LOD	35	< LOD	< LOD	< LOD	< LOD	
4704	Fig No. 10	float	ppm	aUnl-f17-19	< LOD	101	31	13	< LOD	< LOD	< LOD	< LOD	< LOD	< LOD	< LOD	332	< LOD	236	< LOD	< LOD	205119	< LOD	< LOD	66	< LOD	< LOD	24	< LOD	< LOD	< LOD	< LOD	< LOD	
4705	Fig No. 10	float	ppm	aUnl-f17-19a	6	55	29	< LOD	7	< LOD	206	< LOD	< LOD	< LOD	< LOD	334	< LOD	346	170	< LOD	302013	< LOD	< LOD	61	< LOD	< LOD	12	3	112	< LOD	< LOD	< LOD	
4706	Fig No. 10	float	ppm	aUnl-f17-19b	< LOD	94	15	< LOD	25	< LOD	52	< LOD	< LOD	< LOD	< LOD	185	< LOD	< LOD	< LOD	< LOD	213504	< LOD	< LOD	77	< LOD	< LOD	17	< LOD	63	< LOD	< LOD	< LOD	

Cariboo Lake Property
Keithley Area A
Rock Samples XRF Results (ppm)

XRF No.	Pb	As	Zn	Au
4592	67	1178	3370	
4593	141	562	2879	
4594	30	214	607	
4595	179	121	1396	
4596	4505	324	1729	
4597	45	263	683	
4598	18	152	769	
4599	211	1209	3254	
4600	152	1020	4634	
4601	91	190	1504	
4602	109	275	1315	
4603	128	606	2091	
4604	209	128	1399	
4605	211	96	270	
4606	54	51	398	
4607	167	1330	2614	
4608		146	345	
4609	17	126	781	
4610	56	184	2050	
4611	153	561	2546	
4612	17	45	920	
4613	62	18	344	
4614	24	30	263	
4615	47	8	679	
4616	78	44	120	
4617	390	2294	2838	
4618	29	63	237	
4619		71	371	
4620		15	239	
4621		42	293	
4622	70	676	1202	
4623		242	1289	
4624		18	717	
4625	13	28	1876	
4626			232	
4627		7	557	
4628			1397	
4629	159	82	1646	
4630		10	302	
4631		76	1200	
4632		24	253	
4633		206	1360	10.22
4634		127	242	
4635	27	500	2021	
4636	25	157	340	
4637		9	233	
4638		9	357	
4639	16	52	617	
4640	164	802	3727	
4641		6	67	
4642	128	308	921	
4643	36	224	398	
4644	261	244	895	
4645		232	656	
4646	24	84	2822	10.54
4647		27	1219	
4648		13	434	

Results over 1,000 ppm marked in red.
Two Au values (ppm) are included above.



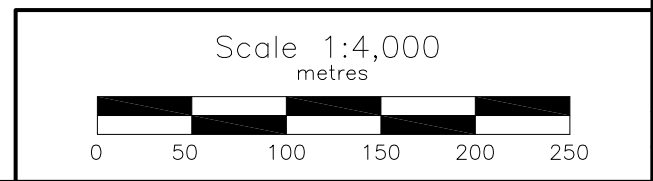
UTM Coordinate System
Map Datum: NAD 83
Zone: 10

Barker Minerals Ltd. external claim boundary

Values below level of detection are not shown.
See Table No. 4 for XRF results.

LEGEND

- Topographic Contour & Elevation
Contour interval 20 metres
- Road
- Creek, Pond
- 2018 sample location and number



BARKER MINERALS LTD.
Cariboo Lake Property
Keithley Area A
Sample Numbers and
Pb, As, Zn Geochemistry
Cariboo Mining Division, B.C.

NTS Mapsheet: 93 A/14 Date: November 26, 2018
Fig.No. 14

Table No. 4
Keithley Area A - Rock XRF Sampling Results

XRF No.	Fig. No./Area	Type	Units	Field No.	Mo	Zr	Sr	U	Rb	Th	Pb	Se	As	Hg	Au	Zn	W	Cu	Ni	Co	Fe	Mn	Sb	Sn	Cd	Ag	Nb	Y	Bi	Cr	V	Ti		
					In all cases <LOD means below level of detection.													Values for Pb, As, Zn over 1,000 ppm are coloured red.																
4592	Fig No. 10	float	ppm	Keit-f17-18	89	55	20	19	26 < LOD		67	21	1178	< LOD	< LOD	3370	< LOD	< LOD	408 < LOD	180288 < LOD	< LOD	< LOD	< LOD	< LOD	< LOD	< LOD	< LOD	< LOD	11	< LOD	< LOD	127	672	1210
4593	Fig No. 10	float	ppm	Keit-f17-18a	67	52	96	14	47 < LOD		141	< LOD	562	< LOD	< LOD	2879	< LOD	< LOD	276 < LOD	126742 < LOD	< LOD	< LOD	< LOD	< LOD	< LOD	< LOD	< LOD	5	< LOD	< LOD	< LOD	< LOD	< LOD	
4594	Fig No. 10	float	ppm	Keit-f17-18b	< LOD	< LOD	6	< LOD	< LOD	< LOD	30	< LOD	214	< LOD	< LOD	607	< LOD	< LOD	107 < LOD	55749 < LOD	< LOD	< LOD	< LOD	< LOD	< LOD	< LOD	< LOD	< LOD	< LOD	< LOD	< LOD	< LOD		
4595	Fig No. 10	float	ppm	Keit-f17-19	71	44	61	16	36 < LOD		179	< LOD	121	< LOD	< LOD	1396	< LOD	55	348 < LOD	122478 < LOD	< LOD	< LOD	< LOD	< LOD	< LOD	< LOD	3	< LOD	< LOD	< LOD	< LOD	< LOD		
4596	Fig No. 10	float	ppm	Keit-f17-19b	203	124	99	21	49 < LOD		4505	< LOD	324	< LOD	< LOD	1729	< LOD	< LOD	576 < LOD	109748 < LOD	< LOD	< LOD	< LOD	< LOD	< LOD	< LOD	14	< LOD	< LOD	< LOD	1846	< LOD		
4597	Fig No. 10	float	ppm	Keit-f17-20	22	4	9	< LOD	2 < LOD		45	< LOD	263	< LOD	< LOD	683	< LOD	< LOD	145 < LOD	34703	126	< LOD	< LOD	< LOD	< LOD	< LOD	< LOD	< LOD	< LOD	< LOD	< LOD	< LOD		
4598	Fig No. 10	float	ppm	Keit-f17-20a	18	< LOD	3	< LOD	< LOD	< LOD	18	< LOD	152	< LOD	< LOD	769	< LOD	20	159 < LOD	56799	213	< LOD	< LOD	< LOD	< LOD	< LOD	< LOD	< LOD	< LOD	< LOD	< LOD	< LOD		
4599	Fig No. 10	float	ppm	Keit-f17-21	77	66	64	27	18 < LOD		211	23	1209	< LOD	< LOD	3254	< LOD	950	1242	519	227581 < LOD	206	157	< LOD	< LOD	5	< LOD	< LOD	< LOD	< LOD	< LOD	< LOD		
4600	Fig No. 10	float	ppm	Keit-f17-21a	51	73	126	38	45 < LOD		152	< LOD	1020	< LOD	< LOD	4634	< LOD	43	669 < LOD	250197 < LOD	61	58	< LOD	< LOD	< LOD	4	< LOD	< LOD	< LOD	< LOD	< LOD	< LOD		
4601	Fig No. 10	float	ppm	Keit-f17-21b	23	28	34	28	17 < LOD		91	< LOD	190	< LOD	< LOD	1504	< LOD	< LOD	246 < LOD	94316	473	< LOD	< LOD	< LOD	< LOD	< LOD	2	< LOD	< LOD	< LOD	< LOD	< LOD		
4602	Fig No. 10	float	ppm	Keit-f17-20b	49	34	46	9	27 < LOD		109	< LOD	275	< LOD	< LOD	1315	< LOD	96	297 < LOD	91452 < LOD	< LOD	< LOD	< LOD	< LOD	< LOD	4	< LOD	< LOD	< LOD	< LOD	< LOD	< LOD		
4603	Fig No. 10	float	ppm	Keit-f17-19a	63	< LOD	17	19	< LOD	< LOD	128	< LOD	606	< LOD	< LOD	2091	< LOD	< LOD	217 < LOD	156612 < LOD	92	< LOD	< LOD	< LOD	< LOD	3	< LOD	< LOD	< LOD	< LOD	< LOD	< LOD		
4604	Fig No. 10	float	ppm	Keit-f17-22	12	27	10	< LOD	2 < LOD		209	< LOD	128	< LOD	< LOD	1399	< LOD	< LOD	< LOD	84474 < LOD	< LOD	< LOD	< LOD	< LOD	< LOD	< LOD	< LOD	< LOD	< LOD	< LOD	< LOD	< LOD		
4605	Fig No. 10	float	ppm	Keit-f17-22a	26	12	9	< LOD	6	15	211	< LOD	96	< LOD	< LOD	270	< LOD	< LOD	< LOD	24020 < LOD	49	< LOD	< LOD	< LOD	< LOD	8	< LOD	< LOD	< LOD	< LOD	< LOD	< LOD		
4606	Fig No. 10	float	ppm	Keit-f17-22b	14	8	6	6	2	5	54	< LOD	51	< LOD	< LOD	398	< LOD	23	< LOD	< LOD	18512 < LOD	< LOD	< LOD	< LOD	< LOD	6	< LOD	< LOD	< LOD	< LOD	< LOD	< LOD		
4607	Fig No. 10	float	ppm	Keit-f17-23	54	60	71	17	36 < LOD		167	< LOD	1330	< LOD	< LOD	2614	< LOD	< LOD	533 < LOD	222622 < LOD	206	179	< LOD	< LOD	5	2	< LOD	< LOD	516	365	< LOD			
4608	Fig No. 10	float	ppm	Keit-f17-23a	11	4	8	< LOD	< LOD	4	< LOD	< LOD	146	< LOD	< LOD	345	< LOD	< LOD	< LOD	33523	83	32	< LOD	< LOD	< LOD	3	< LOD	< LOD	< LOD	< LOD	< LOD	< LOD		
4609	Fig No. 10	float	ppm	Keit-f17-23b	5	4	13	< LOD	< LOD	< LOD	17	< LOD	126	< LOD	< LOD	781	< LOD	< LOD	162 < LOD	85502	145	< LOD	< LOD	< LOD	< LOD	< LOD	< LOD	< LOD	< LOD	< LOD	< LOD	< LOD		
4610	Fig No. 10	float	ppm	Keit-f17-24	61	28	19	< LOD	10 < LOD		56	5	184	< LOD	< LOD	2050	< LOD	130	307 < LOD	92048	554	< LOD	< LOD	< LOD	< LOD	2	19	< LOD	< LOD	< LOD	< LOD	< LOD		
4611	Fig No. 10	float	ppm	Keit-f17-24b	134	77	30	16	27 < LOD		153	< LOD	561	< LOD	< LOD	2546	< LOD	187	374 < LOD	132907 < LOD	< LOD	< LOD	< LOD	< LOD	< LOD	12	8	< LOD	180	1241	990			
4612	Fig No. 10	float	ppm	Keit-f17-25	33	28	28	12	22 < LOD		17	< LOD	45	< LOD	< LOD	920	< LOD	22	272 < LOD	34281	1982	52	27	< LOD	< LOD	6	4	< LOD	< LOD	< LOD	< LOD	< LOD		
4613	Fig No. 10	float	ppm	Keit-f17-24a	9	14	6	< LOD	10 < LOD		62	< LOD	18	< LOD	< LOD	344	< LOD	18	224 < LOD	4700	4619	< LOD	< LOD	< LOD	< LOD	< LOD	< LOD	< LOD	< LOD	< LOD	< LOD	< LOD		
4614	Fig No. 10	float	ppm	Keit-f17-25a	< LOD	2	4	< LOD	2 < LOD		24	< LOD	30	< LOD	< LOD	263	< LOD	21	< LOD	13416 < LOD	< LOD	< LOD	< LOD	< LOD	< LOD	< LOD	< LOD	< LOD	< LOD	< LOD	< LOD	< LOD		
4615	Fig No. 10	float	ppm	Keit-f17-25b	18	12	16	< LOD	8 < LOD		47	< LOD	8	< LOD	< LOD	679	< LOD	27	173 < LOD	31654	1310	< LOD	< LOD	< LOD	< LOD	< LOD	< LOD	< LOD	< LOD	< LOD	< LOD	< LOD		
4616	Fig No. 10	float	ppm	Keit-f17-26	< LOD	3	6	< LOD	< LOD	< LOD	78	< LOD	44	< LOD	< LOD	120	< LOD	< LOD	< LOD	7515	265	< LOD	< LOD	< LOD	< LOD	< LOD	< LOD	< LOD	< LOD	< LOD	< LOD	< LOD		
4617	Fig No. 10	float	ppm	Keit-f17-26a	80	105	26	28	36 < LOD		390	38	2294	< LOD	< LOD	2838	< LOD	< LOD	717 < LOD	262142 < LOD	< LOD	< LOD	< LOD	< LOD	< LOD	24	3	< LOD	< LOD	< LOD	< LOD	< LOD		
4618	Fig No. 10	float	ppm	Keit-f17-26b	< LOD	14	5	< LOD	8 < LOD		29	< LOD	63	< LOD	< LOD	237	< LOD	25	131 < LOD	10936	800	< LOD	< LOD	< LOD	< LOD	< LOD	2	< LOD	< LOD	< LOD	< LOD	< LOD		
4619	Fig No. 10	float	ppm	Keit-f17-27	5	4	4	< LOD	2 < LOD	< LOD	< LOD	< LOD	71	< LOD	< LOD	371	< LOD	< LOD	< LOD	23273 < LOD	< LOD	< LOD	< LOD	< LOD	< LOD	2	< LOD	< LOD	< LOD	< LOD	< LOD	< LOD		
4620	Fig No. 10	float	ppm	Keit-f17-27a	< LOD	2	< LOD	< LOD	< LOD	< LOD	< LOD	< LOD	15	< LOD	< LOD	239	< LOD	< LOD	< LOD	9594	160	< LOD	< LOD	< LOD	< LOD	< LOD	< LOD	< LOD	< LOD	< LOD	< LOD	< LOD		
4621	Fig No. 10	float	ppm	Keit-f17-27b	5	< LOD	4	< LOD	2 < LOD	< LOD	< LOD	< LOD	42	< LOD	< LOD	293	< LOD	< LOD	< LOD	17808 < LOD	< LOD	< LOD	< LOD	< LOD	< LOD	< LOD	< LOD	< LOD	149	< LOD	< LOD	< LOD		
4622	Fig No. 10	float	ppm	Keit-f17-28	73	123	30	19	46 < LOD		70	< LOD	676	< LOD	< LOD	1202	< LOD	< LOD	215 < LOD	85961 < LOD	< LOD	< LOD	< LOD	< LOD	< LOD	14	4	< LOD	< LOD	< LOD	< LOD	< LOD		
4623	Fig No. 10	float	ppm	Keit-f17-28a	26	30	19	8	18 < LOD	< LOD	< LOD	< LOD	242	< LOD	< LOD	1289	< LOD	< LOD	199 < LOD	100134 < LOD	< LOD	< LOD	< LOD	< LOD	< LOD	< LOD	< LOD	< LOD	< LOD	< LOD	< LOD	< LOD		
4624	Fig No. 10	float	ppm	Keit-f17-28b	9	3	5	< LOD	2 < LOD	< LOD	< LOD	< LOD	18	< LOD	< LOD	717	< LOD	20	132 < LOD	25250	1395	< LOD	< LOD	< LOD	< LOD	< LOD	< LOD	< LOD	< LOD	< LOD	< LOD	< LOD		
4625	Fig No. 10	float	ppm	Keit-f17-29	72	84	106	33	63 < LOD		13	< LOD	28	< LOD	< LOD	1876	< LOD	< LOD	365 < LOD	61789 < LOD	< LOD	< LOD	< LOD	< LOD	< LOD	9	8	< LOD	< LOD	< LOD	< LOD	< LOD		
4626	Fig No. 10	float	ppm	Keit-f17-29a	< LOD	< LOD	24	< LOD	< LOD	< LOD	< LOD	< LOD	< LOD	< LOD	< LOD	232	< LOD	< LOD	< LOD	6875 < LOD	< LOD	< LOD	< LOD	< LOD	< LOD	< LOD	< LOD	< LOD	< LOD	< LOD	< LOD	< LOD		
4627	Fig No. 10	float	ppm	Keit-f17-29b	8	4	9	< LOD	< LOD	< LOD	< LOD	< LOD	7	< LOD	< LOD	557	< LOD	< LOD	194 < LOD	17056	1116	< LOD	< LOD	< LOD	< LOD	< LOD	< LOD	< LOD	< LOD	< LOD	< LOD	< LOD		
4628	Fig No. 10	float	ppm	Keit-f17-30	24	6	19	< LOD	4 < LOD	< LOD	< LOD	< LOD	< LOD	< LOD	< LOD	1397	< LOD	< LOD	255 < LOD	41690	2888	< LOD	< LOD	< LOD	< LOD	< LOD	< LOD	< LOD	< LOD	< LOD	< LOD	< LOD		
4629	Fig No. 10	float	ppm	Keit-f17-30a	15	13	20	25	5 < LOD		159	< LOD	82	< LOD	< LOD	1646	< LOD	< LOD	569 < LOD	61871	5917	< LOD	< LOD	< LOD	< LOD	2	< LOD	< LOD	< LOD	< LOD	< LOD	< LOD		
4630	Fig No. 10	float	ppm	Keit-f17-30b	< LOD	4	2	< LOD	< LOD	< LOD	< LOD	< LOD	10																					

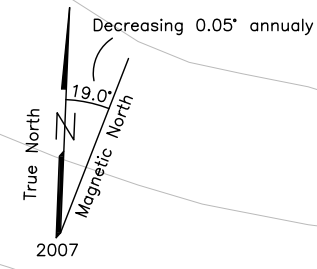
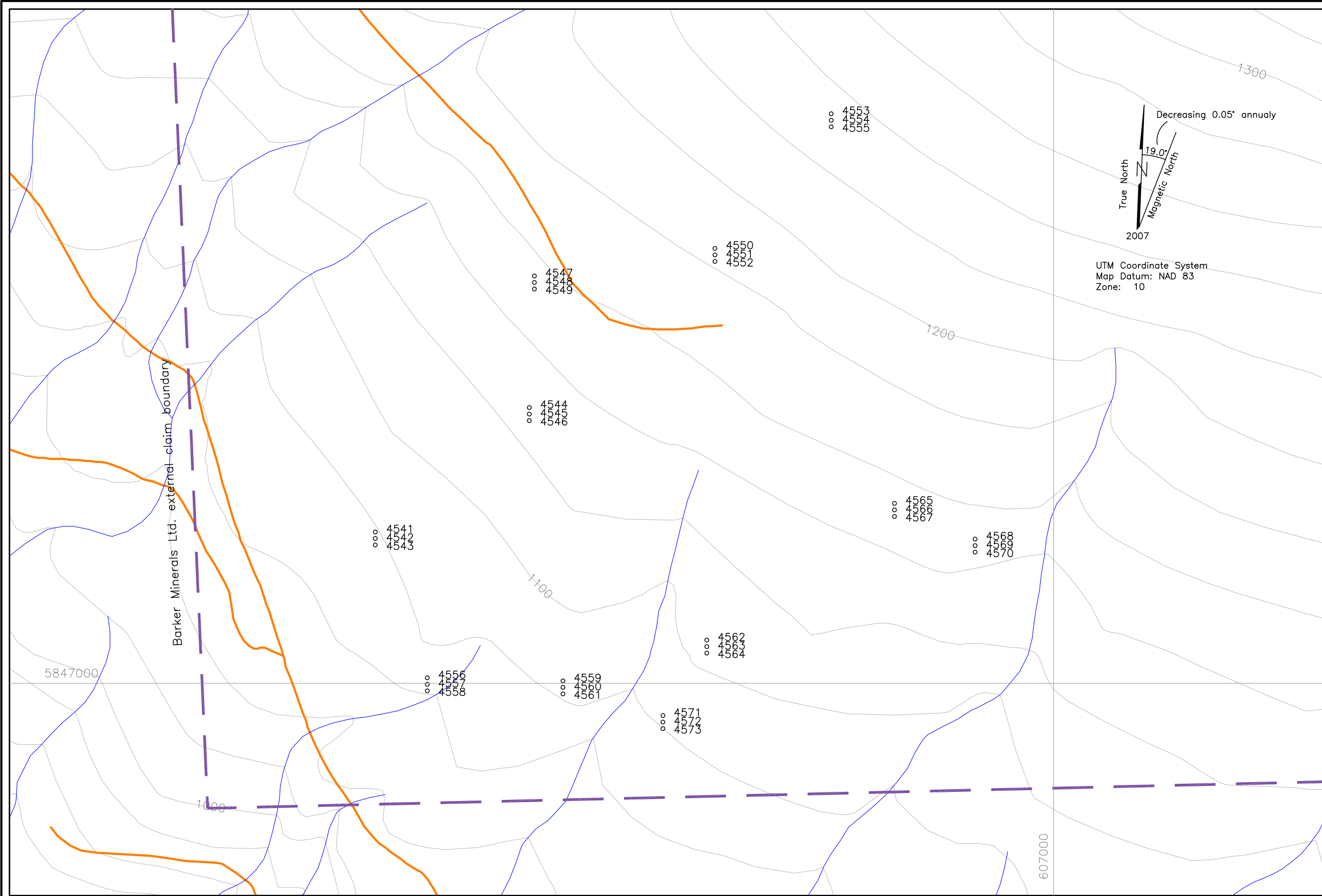
Table No. 4
Keithley Area A - Rock XRF Sampling Results

XRF No.	Fig. No./Area	Type	Units	Field No.	Mo	Zr	Sr	U	Rb	Th	Pb	Se	As	Hg	Au	Zn	W	Cu	Ni	Co	Fe	Mn	Sb	Sn	Cd	Ag	Nb	Y	Bi	Cr	V	Ti	
4638	Fig No. 10	float	ppm	Keit-f17-33a	9	8	23 < LOD	5 < LOD	< LOD	< LOD	9 < LOD	< LOD	9 < LOD	< LOD	< LOD	357	< LOD	< LOD	129 < LOD	9315	753	< LOD	< LOD	< LOD	< LOD	< LOD	< LOD	< LOD	< LOD	< LOD	< LOD	< LOD	< LOD
4639	Fig No. 10	float	ppm	Keit-f17-33b	16	11	17	8	5 < LOD	< LOD	16 < LOD	< LOD	52 < LOD	< LOD	< LOD	617	< LOD	18	118 < LOD	19922	735	< LOD	< LOD	< LOD	< LOD	< LOD	< LOD	< LOD	< LOD	< LOD	< LOD	< LOD	< LOD
4640	Fig No. 10	float	ppm	Keit-f17-34	53	49	11	16	10 < LOD	< LOD	164 < LOD	< LOD	802 < LOD	< LOD	< LOD	3727	< LOD	35	484 < LOD	161373	< LOD	42	36	< LOD	< LOD	8	3	< LOD	< LOD	< LOD	< LOD	< LOD	
4641	Fig No. 10	float	ppm	Keit-f17-34a	3	8	4 < LOD	12 < LOD	< LOD	< LOD	6 < LOD	< LOD	6 < LOD	< LOD	< LOD	67	< LOD	< LOD	< LOD	< LOD	3396	115	< LOD	< LOD	< LOD	< LOD	< LOD	< LOD	< LOD	< LOD	< LOD	< LOD	< LOD
4642	Fig No. 10	float	ppm	Keit-f17-34b	10 < LOD		8 < LOD	< LOD	< LOD	< LOD	128 < LOD	< LOD	308 < LOD	< LOD	< LOD	921	< LOD	< LOD	187 < LOD	60676	< LOD	< LOD	< LOD	< LOD	< LOD	< LOD	< LOD	< LOD	< LOD	< LOD	< LOD	< LOD	< LOD
4643	Fig No. 10	float	ppm	Keit-f17-35	18	8	3 < LOD	4 < LOD	< LOD	< LOD	36	14	224	8 < LOD	< LOD	398	< LOD	< LOD	139 < LOD	26406	< LOD	< LOD	< LOD	< LOD	< LOD	< LOD	< LOD	< LOD	19	< LOD	< LOD	< LOD	
4644	Fig No. 10	float	ppm	Keit-f17-35a	44	53	33	12	19	7	261	14	244	< LOD	< LOD	895	< LOD	29	133 < LOD	44782	< LOD	< LOD	< LOD	< LOD	< LOD	< LOD	8	< LOD	< LOD	< LOD	< LOD	< LOD	
4645	Fig No. 10	float	ppm	Keit-f17-35b	29	8	3 < LOD	3 < LOD	< LOD	< LOD	10	< LOD	232	< LOD	< LOD	656	< LOD	< LOD	116 < LOD	49463	163	< LOD	< LOD	< LOD	< LOD	< LOD	< LOD	< LOD	< LOD	< LOD	< LOD	< LOD	< LOD
4646	Fig No. 10	float	ppm	Keit-f17-36	18	16	25 < LOD	3 < LOD	< LOD	< LOD	24 < LOD	< LOD	84 < LOD	10.54	< LOD	2822	< LOD	< LOD	518 < LOD	111925	7900	< LOD	< LOD	< LOD	< LOD	< LOD	3	< LOD	< LOD	< LOD	< LOD	< LOD	
4647	Fig No. 10	float	ppm	Keit-f17-36a	< LOD	4	8 < LOD	< LOD	< LOD	< LOD	< LOD	< LOD	27	< LOD	< LOD	1219	< LOD	< LOD	268 < LOD	32911	1733	< LOD	< LOD	< LOD	< LOD	< LOD	< LOD	< LOD	< LOD	< LOD	< LOD	< LOD	
4648	Fig No. 10	float	ppm	Keit-f17-36b	17	32	35	11	27 < LOD	< LOD	< LOD	< LOD	13	< LOD	< LOD	434	< LOD	< LOD	126 < LOD	9694	< LOD	< LOD	< LOD	< LOD	< LOD	4	3	< LOD	< LOD	< LOD	< LOD	< LOD	

Cariboo Lake Property
Keithley Area B
Rock Samples XRF Results (ppm)

XRF No.	Pb	As	Zn
4541	76753	2849	68
4542	204476	8248	117
4543	14101	1017	158
4544	309674	12323	164
4545	88480	3101	93
4546	1043		226
4547	115028	3681	629
4548	129324	4893	383
4549	97477	3315	1184
4550	59478	1384	49
4551	22624	1108	216
4552	43438	1260	62
4553	97017	3760	1592
4554	159215	7358	
4555	74881	2506	285
4556	21120	1766	122
4557	2514	440	633
4558	86168	2434	754
4559	26	274	421
4560	567	152	1376
4561	2839	161	203
4562	5504	221	314
4563	3383	411	367
4564	41692	1459	179
4565	45743	1403	777
4566	2439	229	862
4567	9596	497	1365
4568	83	885	1432
4569	168	663	1789
4570	68	54	543
4571	8290	1579	1376
4572	153	125	649
4573	230	304	640

Results over 1,000 ppm marked in red.

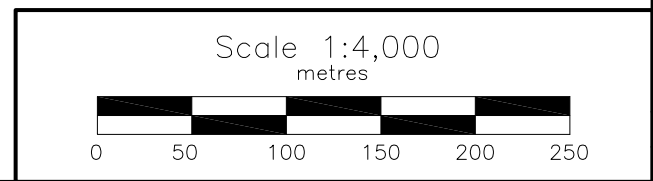


UTM Coordinate System
Map Datum: NAD 83
Zone: 10

LEGEND

- Topographic Contour & Elevation
Contour interval 20 metres
- Road
- Creek, Pond
- 2018 sample location and number

Values below level of detection are not shown.
See Table No. 5 for XRF results.



BARKER MINERALS LTD.

Cariboo Lake Property

Keithley Area B

Sample Numbers and

Pb, As, Zn Geochemistry

Cariboo Mining Division, B.C.

NTS Mapsheet: 93 A/14

Date: November 26, 2018

Fig.No. 15

Cariboo Lake Property
Keithley Area C
Rock Samples XRF Results (ppm)

XRF No.	Pb	As	Zn
4574	215	137	663
4575	5394	1629	4233
4576	379	824	6297
4577	1930	524	1786
4578	95	51	1989
4579	323	63	233
4580	117	383	1163
4581	44	38	294
4582	77	834	1002
4583	157	1398	2468
4584		15	325
4585	50	196	1273
4586	567	1042	638
4587	158	851	686
4588	40	42	79
4589	283	404	1205
4590	50	477	1878
4591	2440	1444	2024

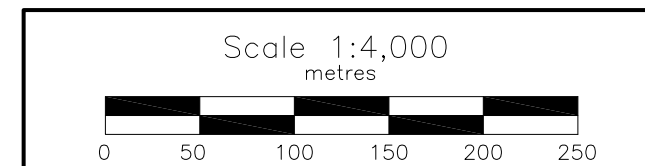
Results over 1,000 ppm marked in red.



Values below level of detection are not shown.
See Table No. 6 for XRF results.

LEGEND

- Topographic Contour & Elevation
Contour interval 20 metres
- Creek, Pond
- Road
- 2018 sample location and number



BARKER MINERALS LTD.

Cariboo Lake Property

Keithley Area C

Sample Numbers and

Pb, As, Zn Geochemistry

Cariboo Mining Division, B.C.

NTS Mapsheet: 93 A/14

Date: November 26, 2018

Fig.No. 16

