



Ministry of Energy, Mines & Petroleum Resources  
Mining & Minerals Division  
BC Geological Survey

Assessment Report  
Title Page and Summary

TYPE OF REPORT [type of survey(s)]: Geological and Geochemical report Miracle Property

TOTAL COST: \$25,343

AUTHOR(S): P.E.Fox PhD P.Eng

SIGNATURE(S):



NOTICE OF WORK PERMIT NUMBER(S)/DATE(S): NA

YEAR OF WORK: 2019

STATEMENT OF WORK - CASH PAYMENTS EVENT NUMBER(S)/DATE(S): 5749192 July 26, 2019

PROPERTY NAME: Miracle

CLAIM NAME(S) (on which the work was done): 1069444 Miracle#1

COMMODITIES SOUGHT: Copper, gold

MINERAL INVENTORY MINFILE NUMBER(S), IF KNOWN: 93A059

MINING DIVISION: Cariboo

NTS/BCGS: 93A5

LATITUDE: 52 ° 29 ' " LONGITUDE: 121 ° 44 ' " (at centre of work)

OWNER(S): EAGLE PEAK  
1) RESOURCES

2)

MAILING ADDRESS: 3431 19th Av

Smithers BC

OPERATOR(S) [who paid for the work]: EAGLE PEAK  
1) RESOURCES

2)

MAILING ADDRESS: 3431 19th Av

Smithers BC

PROPERTY GEOLOGY KEYWORDS (lithology, age, stratigraphy, structure, alteration, mineralization, size and attitude):

Epithermal silver veins and disseminated chalcopyrite-molybdenum occur in Upper Triassic volcanic rocks, argillite, hornfels and Cretaceous granitic dikes.

REFERENCES TO PREVIOUS ASSESSMENT WORK AND ASSESSMENT REPORT NUMBERS:

Fox, PE 2017, Report on the Miracle Property, Aris 36250; Hodgson 1970, Report on the Gavin Lake Property, Aris report 37012, Fox 2018 Geological and Geochemical report Aris 37822

TYPE OF WORK IN THIS REPORT	EXTENT OF WORK (IN METRIC UNITS)	ON WHICH CLAIMS	PROJECT COSTS APPORTIONED (incl. support)
<b>GEOLOGICAL (scale, area)</b> <b>Ground, mapping</b> _____ <b>Photo interpretation</b> _____	1.5 sq Km 1:5000	1069444,	\$9,000
<b>GEOPHYSICAL (line-kilometres)</b> <b>Ground</b> <b>Magnetic</b> _____ <b>Electromagnetic</b> _____ <b>Induced Polarization</b> _____ <b>Radiometric</b> _____ <b>Seismic</b> _____ <b>Other</b> _____ <b>Airborne</b> _____			
<b>GEOCHEMICAL (number of samples analysed for...)</b> <b>Soil</b> 43 samples, 37 elements including Cu Mo Au Ag _____ _____ Pb Zn <b>Silt</b> _____ <b>Rock</b> 6 rock samples .5 kg 37 elements <b>Other</b> _____		1069444   1069444	   \$14,343 \$2,000
<b>DRILLING (total metres; number of holes, size)</b> <b>Core</b> _____ <b>Non-core</b> _____			
<b>RELATED TECHNICAL</b> <b>Sampling/assaying</b> _____ <b>Petrographic</b> _____ <b>Mineralographic</b> _____ <b>Metallurgic</b> _____			
<b>PROSPECTING (scale, area)</b> _____			
<b>PREPARATORY / PHYSICAL</b> <b>Line/grid (kilometres)</b> _____ <b>Topographic/Photogrammetric (scale, area)</b> _____ <b>Legal surveys (scale, area)</b> _____ <b>Road, local access (kilometres)/trail</b> _____ <b>Trench (metres)</b> _____ <b>Underground dev. (metres)</b> _____ <b>Other</b> _____			
		<b>TOTAL COST:</b>	\$25,343

ASSESSMENT REPORT

GEOLOGICAL AND GEOCHEMICAL REPORT  
MIRACLE PROSPECT

Cariboo Mining Division

NTS 93A5

Latitude 52° 29', Longitude 121°44'

UTM 10 5817001N, 585821E

For

EAGLE PEAK RESOURCES INC

910 – 475 West Georgia St

Vancouver, BC

By

P. E. Fox, PhD., P.Eng

Richmond, B.C.

September 15, 2019

Revised January 20, 2020

**Event No.5749192**

*Miracle 1,2 Claims*

*Cariboo Mining Division*

**TABLE OF CONTENTS**

SUMMARY ..... ii

INTRODUCTION..... 1

LOCATION..... 1

CLAIMS..... 1

HISTORY ..... 1

REGIONAL GEOLOGY..... 2

GEOLOGY ..... 3

WORK PROGRAM ..... 5

RESULTS ..... 5

RECOMMENATIONS ..... 6

COST STATEMENT ..... 6

STATEMENT OF QUALIFICATIONS..... 13

BIBLIOGRAPHY ..... 14

**TABLES**

TABLE 1: CLAIM LIST..... 2

TABLE 2: EXPENDITURES ..... 6

FIGURE 1: LOCATION MAP..... 7

FIGURE 2: CLAIM MAP..... 8

FIGURE 3: REGIONAL GEOLOGY..... 9

FIGURE 4: GEOLOGICAL MAP..... 10

FIGURE 5: DETAIL GEOLOGICAL MAP LITTLE LAKE AREA ..... 11

FIGURE 6. GEOCHEMICAL MAP..... 12

**APPENDECES**

APPENDIX I: SOIL SAMPLE DATA..... 15

APPENDIX II: ROCK SAMPLE DATA ..... 16

APPENDIX III: CERTIFICATES..... 17

## SUMMARY

This report documents work done by Eagle Peak Resources Inc in 2019 on the Miracle prospect. Work comprised soil and rock sampling and geological mapping near Gavin Lake, British Columbia.

The rock succession established last year comprises an east-dipping assemblage of Upper Triassic and Lower Jurassic rocks seen elsewhere in the Mount Polley area although the volcanic sequence at Gavin Lake may not be strict stratigraphic equivalents. Poly lithologic breccia and associated tuffs are exposed south of Little Lake and a poorly sorted breccia and conglomerate unit consisting of subrounded volcanic clasts up to 25cm are exposed near the south boundary of the claims. A thick sequence of basaltic rock lies in low-lying timbered terrain to the west. The above rocks are cut by small stocks of pyroxenite, diorite/gabbro and a mineralized porphyry dike complex of the Gavin intrusions of Cretaceous age. Geological work this year extended and refined previous mapping done in 2018 on the Shelterwood road south of Little Lake.

The sampling program comprised 43 soil samples and 6 rock samples collected on local road networks near Little Lake, a short distance southwest of Gavin Lake. Gold content of the Little Lake soil, largely compact glacial till, ranges from 1.1 to 15.9 ppb. Average gold content is 4 ppb. Silver contents range from 48 to 328 ppm and average 136 ppm. Gold content of rock samples ranges from 0.2 to 19 ppb. Average gold content is 4 ppb. Silver contents range from 17 to 148 ppm and average 68 ppm.

The pyritic gossan exposed on the Shelterwood road returned 19 ppb Au, weakly anomalous for the region, but probably warrants further sampling. Soil samples here are weakly anomalous in silver and gold, 328 ppm Ag and 15.9 ppb gold.

Mapping at Little Lake this year detailed a highly carbonate/sericite-altered, pyritic quartz porphyry dike complex exposed along the Shelterwood road, similar to altered zones at the Miracle vein complex north of Gavin Lake to the northeast.

Further work is recommended to follow up the Little Lake target with detail soil sampling on 50m centres north and south of the Shelterwood road. Expenditures total \$25,343

## INTRODUCTION

This report documents work done by Eagle Peak Resources Inc in 2019 on the Miracle prospect, Gavin Lake area, B.C., originally part of a large claim block known as the Miocene project. Work comprised geological mapping and rock and soil sampling south of Little Lake to follow up anomalous gold soil samples collected near Little Lake in 2017. Results of the program are detailed herein and recommendations made for continuing work. Expenditures total \$25,343. Work was paid for by Eagle Peak Resources.

## LOCATION

The Miracle property lies in the Cariboo Mining Division on map sheet 093A/5 (Figure 1). The Gavin Lake prospects lie west and north of Gavin Lake 20 km southwest of Likely. It is reached via the Gavin Lake road 3 km from the Likely Highway.

The claims lie in the Quesnel Highlands physiographic area of the Interior Plateau east of Williams Lake; a collage of lakes, broad valleys and wooded uplands. Harsh winters and inclement overcast summer days spawn a thick growth of pine, spruce, birch, alder and poplar interspersed with meandering streams, shallow lakes and grasslands, boggy wetlands and thick brushy understory including thick growths of *Oplopanax Horridus*<sup>1</sup>. Glacial till, both lodgment and outwash, is often thick and outcropping bedrock, generally Roche Moutonee, rocky escarpments and rubble, is sparse.

## CLAIMS

The Property consists of two mineral tenures<sup>2</sup> covering 6,299 hectares (Figure 2, Table 1). Expiry dates assume the work documented herein is accepted for assessment requirements. Work was filed on July 26, 2019 under event # 5749192. Work was completed between July 4, 2019 and July 10, 2019 under Mine Permit MX-10-211 and one year applied to the Miracle 1-2 claims.

## HISTORY

Placer and bedrock exploration of the Likely - Horsefly region began with the discovery of placer gold deposits in 1859. Subsequent placer discoveries were made at Cedar Creek, Antler Creek, Keithley Creek and along the Quesnel River. The Likely-Horsefly region was extensively prospected and there is evidence of gold prospecting within the claim area along Teasdale Creek. Government sponsored

---

<sup>1</sup> Also known as the Devils Club!

<sup>2</sup> Claim holdings were amalgamated on July 3, 2019 event 5746651

airborne geophysical surveys and regional geochemical surveys prompted extensive exploration activity. The QR gold deposit was discovered in 1975 and the Mount Polley mine, a few kilometers

**TABLE 1 CLAIM LIST**

Title Number	Claim	Expiry	Area ha
1069444	MIRACLE 1	2020//JUL30	3188.4
1069445	MIRACLE 2	2020/JUL/30	3210.8

to the northeast of the claim area, was discovered in 1966 and commenced production in 1997. More recently the Woodjam porphyry copper deposit was discovered south of Horsefly in 2007. Interest in the Miracle prospect (Minfile 93A059) at Gavin Lake, also known as the Wet and Gavin copper-molybdenum prospects, was prompted by the discovery of Mount Polley and later the QR gold deposit. Numerous exploration programs have been carried out in the region around Gavin Lake since then. Much of the work was carried out by Amax Exploration in 1970 (Hodgson, 1970), Zubex Resources in 1973 (Westervelt, 1974) and Brican Resources (Crandall, 1979), who collectively targeted the copper-molybdenum mineralization immediately north of Gavin Lake. Amax completed an extensive program of geological mapping, trenching, and soil rock and silt sampling. Soil sampling by Zubex and later by Longboat Resources (Carter and Barclay, 1984) covered the area west of the Gavin prospect. Brican completed soil sampling and induced polarization surveys over the Miracle showing<sup>3</sup> in 1979. More recently, a compilation report on the property was completed by Wallis in 1995 (Wallis, 1995). Eagle Peak Resources completed geochemical sampling north of the Miracle vein prospect in 2009 and 981 m of diamond drilling in 2010 to follow up geochemical results and to test the Miracle vein at depth. Geochemical surveys and geological mapping were completed in 2013 through 2018 (Fox 2013, 2015, 2016, 2017, 2018) north and south of Gavin and Little Lakes.

## REGIONAL GEOLOGY

The Miracle claim group (Figure 3) lies in the Central Quesnel Terrane, a tectonically amalgamated melange of deformed island arc/ back arc volcanic rocks, plutonic belts and sedimentary basins forming a highly faulted regional synclinal structure (Panteleyev et al, 1996).

The oldest strata in the region are black shale, argillite, siltstone and sandstone of Middle Triassic age. Overlying this older unit are basaltic pillow lava, flows and breccia of Norian age and still younger argillite and bedded sections of shoshonitic felsic breccia and tuff. These rocks are cut by numerous Cretaceous

<sup>3</sup> Originally discovered by Merna Lloyd in 1965.

granitic bodies and are overlain by regionally extensive flat lying Chilcotin group basalt flows of Miocene age. Geology of the Miracle prospect is given below.

## GEOLOGY

Local geology is given in Figure 4 in part compiled from Hodgson (1970), Panteleyev et al (1996) and Fox (2017, 2018). North and south of Gavin Lake, pyritic siltstone forms bedrock units (Unit 1 of Panteleyev et al, 1996) while coarse basaltic rocks lie to the east and west. These rocks are cut by a westerly striking Cretaceous dike complex of porphyritic quartz monzonite and granite (Gavin Intrusions). Mapping in 2013 (Fox 2013) south of Little Lake, a small lake west of Gavin Lake, discovered previously unmapped strata of basaltic rocks and felsic units comprising felsic breccia, conglomerate and tuff.

Bedrock exposures on rocky summits south of Little Lake comprise poorly sorted to well bedded and locally laminated feldspathic tuff together with local beds of matrix-supported tuff breccia and lapillstone. Breccia units consist of subangular to rounded clasts of felsic porphyry, minor mafic clasts and rare elongate black pumice fragments(?) all in a tuffaceous matrix (Unit 3b of Panteleyev et al, 1996). Tuff beds are commonly graded with tops to the west. At low elevations to the north and west, these rocks overlie easterly-dipping, rusty, iron carbonate-altered black argillite and siltstone and, farther west, (olivine) augite basalt. Farther south along the Fire Lake road, an east-dipping(?) sequence of (alkalic) basalt, analcite basalt, shoshonitic felsic breccia, conglomerate and dark grey, massive to bedded siltstone and sandstone<sup>4</sup> are exposed. These units continue north and in part underlie the western Miracle claims. The conglomerate comprises compact rounded felsic clasts 2-10 cm, basalt, clasts of felsic breccia up to 25cm, and rare clasts of pinkish porphyry. It is exposed for over 200m. Basaltic rocks underlie timbered low-lands to the west at the head waters of Prouton Creek and overlie siltstone and argillite of unit 1 near the west boundary of the property. All of the volcanic rocks southwest of Gavin Lake as far as the Fire Lake road are in turn overlain (conformably?) by argillite and siltstone of Unit 1 of Panteleyev et al (1996), Bailey (1990), Hodgson (1970)<sup>5</sup>.

The above rocks south of Little Lake are cut by small stocks of massive pyroxenite, diorite/gabbro and a series of west-striking quartz porphyry dikes (Figure 4). The diorite is massive, hypidiomorphic and consists of 50% hornblende, 10% biotite and 40% pinkish intergranular K feldspar and plagioclase. Small bodies of pyroxenite are exposed on Road#3 and consist of coarse grained blocky augite and trace plagioclase. Poorly exposed, intensely altered quartz porphyry dikes of the Gavin Intrusions were mapped along the Shelterwood road this year (Figure 5). These rocks are intensely iron carbonate/sericite altered, weather reddish brown to orange, and contain trace to 2% pyrite. They appear to be about 30m thick, strike westerly and cut black argillite of Unit 1.

<sup>4</sup> Unit 5 of Panteleyev et al (1996) ?.

<sup>5</sup> The Gavin sequence appears to be a separate older precursor of the main volcanic units east of Gavin Lake.

## MINERALIZATION

The well-known Miracle epithermal vein north of Gavin Lake just northeast of the work area occurs within the basalt unit and local tuff and thin siltstone interbeds along a sheared contact of a north-striking body of porphyritic granite of the Gavin intrusions. The veins form a complex zone of stockwork and massive quartz several metres thick exposed over a vertical distance of some 50 m. The zone strikes north and dips steeply west. It consists of ribboned quartz, chalcedony and lesser calcite, iron carbonate, roscolite and disseminated pyrite, galena, sphalerite and rare bornite. Drusy vugs are common and often contain lamellar calcite. Silicification and an outer envelope of clay and iron carbonate alteration of the host rocks are common. Reddish brown quartz-Iron carbonate gossans are common at depth below the quartz-rich lodes. Elsewhere quartz-iron carbonate zones are common throughout the district and well exposed along the Shelterwood road within the map area, the subject of this report.



*Carbonate/sericite altered quartz porphyry, Shelterwood road.*

Mapping this year better defined the extent and mineralization associated with extensive exposures of intensely altered quartz porphyry dike(s) exposed along the Shelterwood roads (photo). The porphyry unit here is fine-grained, brownish (carbonate and sericite?) altered porphyry dike with orange-brown weathering, pale greenish-buff in unweathered rock, fine-grained probably Fe-carbonate  $\pm$ sericite altered. Modal composition (based on preliminary petrographic examination) is approximately:

Relict plagioclase (sericite-carbonate altered, albitized)	40%
Carbonate (mainly dolomite/ankerite?)	25%
Sericite/muscovite	25%
Quartz (mainly veinlets/possible patches?)	5%
"Hydrobiotite" (Fe-rich chlorite)	2-3%
Opaque (limonite, rutile)	1-2%
Apatite	~1%

The porphyry unit overall consists mainly of alkali feldspar strongly altered to sericite and carbonate, plus smaller relict mafic sites altered to sericite/muscovite, opaques and apatite, with a poorly defined porphyritic texture.

Volcanic units are often pyritic and locally hornfelsed. They contain disseminated chalcopyrite, molybdenite and bornite associated with porphyry style quartz-K feldspar stockworks and K feldspar potassic alteration marginal to dikes of porphyritic quartz monzonite and granite along the north contact of the complex. Disseminated chalcopyrite and pyrite were noted in gossanous tuffs and sericite-carbonate altered porphyry dikes exposed for over 150m on the Shelterwood road south of Little Lake (see above).

## **WORK PROGRAM**

The 2019 soil sampling program comprised 43 samples collected from glacial tills at approximately 50m intervals along the Shelterwood road together with geological mapping south of Little Lake and the collection of six rock samples. The purpose of the sampling work was to continue reconnaissance geochemical sampling work of earlier programs by Eagle Peak Resources (Fox 2013, 2015, 2016, 2017, 2018). Sample numbers are given in Figures 5 and 6 along with silver, gold, zinc and lead contents. Sample data are given in Appendix I and II and analytical certificates in Appendix III. Samples were taken of C horizon soils, usually poorly developed, and a reddish C horizon of rocky, compact, clay-rich material close to bedrock. Tills are generally clay-rich and thin, less than five metres thick. Sample depths were recorded at each site, usually 18 cm, and are tabulated in Appendix I. Samples were collected in Kraft sample bags and submitted to Bureau Veritas Minerals - *Acme Laboratories* - in Vancouver, BC. Analytical methods used were code AQ250 aqua regia digestion ICP-MS (37 elements) using the -80mesh fraction (prep code SS80) of dried and screened soil material (15 gm aliquot).. Rock samples comprise small grab samples of bedrock exposed along the Shelterwood road south of Little Lake to follow up soil sampling done last year. Six grab samples, about 500 g each, were obtained from a pyritic, gossanous carbonate/sericite-altered rock ("Shelterwood zone") and black, pyritic argillite utilizing codes AQ 250 and AQ251 (Appendix III). Quality control data are given in Appendix III.

Geological mapping, an on-going program, covered timbered slopes south of Little Lake (Figure 5). This work extended prior work started in 2017 after initial reconnaissance work by Lloyd Tattersall of Eagle Peak Resources. Some 1.5 km<sup>2</sup> were covered this year (Figure 5).

## **RESULTS**

Results for gold (ppb), silver (ppm), zinc (ppm) and lead (ppm) are given in Figures 5 and 6 and set out in Appendix I (soils) and II (rocks) and analytical certificates in Appendix III.

Silver content of the Miracle soils ranges from 48 to 328 ppm and gold content ranges from 1.1 to 15.9 ppb. Silver content of rock samples ranges from 17 to 148 ppm and gold content ranges from 0.2 to 19 ppb. The pyritic gossan exposed on the Shelterwood road returned 19 ppb Au, weakly anomalous for the region, but probably warrants further sampling. Soil samples here are weakly anomalous in silver and

gold, 328 ppm Ag and 15.9 ppb gold. Other samples along the Shelterwood are at background levels for the region (Appendix III).

## RECOMMENATIONS

The Shelterwood road gossan should be followed up with soil sampling on 50-m centers 100m north and south of the Shelterwood road extending from road #3 east to the terminus of the main Shelterwood road.

## COST STATEMENT

Work expenditures, including gst costs, are tabulated below in Table 2.

**TABLE 2. EXPENDITURES**

Miracle Project	Item, time	Rates	Subcost	Cost
Labour ( incl travel)	M Bailey sampler: July 4, 2019	1 days@\$245	245	
	L..Tattersall, technician, prospector July 4,, 2019	1 days@300	300	
Supervision, travel Mapping, sampling	P Fox, geologist i/c, sampling, mapping July 4-10, 2019 including travel	7 days@1800	9000	12600
Accomodation	Williams Lake	7 days@\$165		1155
Food supplies, meals	6 mandays	\$55/day		330
Truck rentals, fuel mileage (2418 km)	1 4wd Ford F150, July 4-10, 2019	325 L @ 1.38 2418 km @ .68	448 1644	2092
Analyses: 43 soil 6 rock	BV Acme labs, Vancouver AQ251 37 elements, -80m ss80 prep	49 samples@ \$34		1666
Field costs	Sample bags, material, maps, computer			300
Report Preparation Maps, interpretation	P Fox Phd PEng, Manifold software plots, data compilation, report	4 days@ 1800		7200
<b>Project total</b>				<b>\$25,343</b>

Prepared by

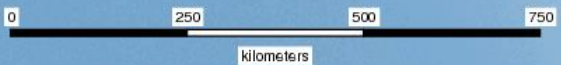


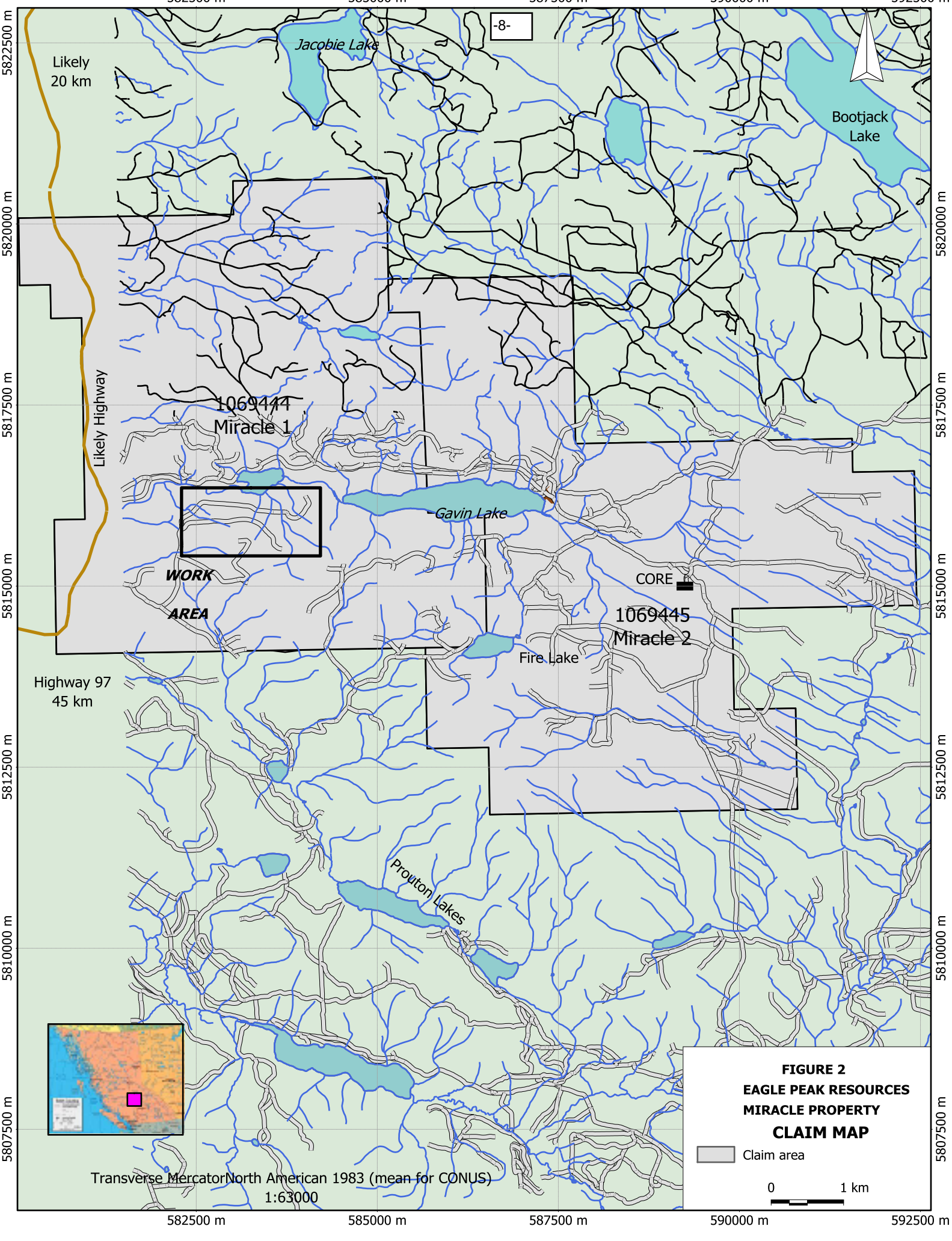
September 15, 2019



FIGURE 1  
LOCATION MAP

NORTH PACIFIC  
OCEAN





-8-

Likely  
20 km

Bootjack  
Lake

Jacobie Lake

1069444  
Miracle 1

Gavin Lake

**WORK  
AREA**

CORE  
1069445  
Miracle 2

Fire Lake

Highway 97  
45 km

Prouton Lakes



**FIGURE 2  
EAGLE PEAK RESOURCES  
MIRACLE PROPERTY  
CLAIM MAP**

Claim area

0 1 km

Transverse Mercator North American 1983 (mean for CONUS)  
1:63000

582500 m

585000 m

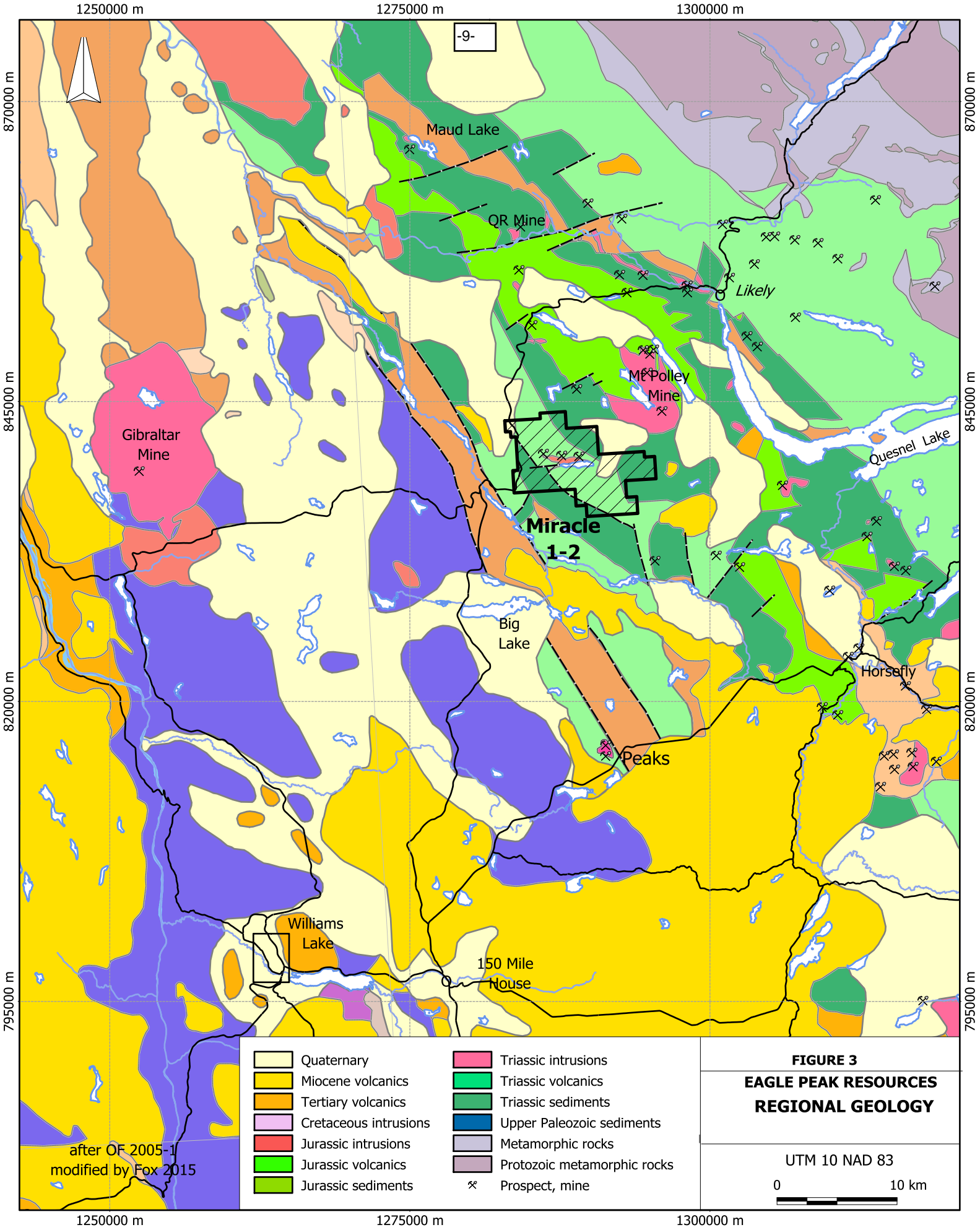
587500 m

590000 m

592500 m

5822500 m  
5820000 m  
5817500 m  
5815000 m  
5812500 m  
5810000 m  
5807500 m

5822500 m  
5820000 m  
5817500 m  
5815000 m  
5812500 m  
5810000 m  
5807500 m



582000 m

583500 m

585000 m

Universal Transverse Mercator - Zone 10 (N)  
North American 1983 (Canada) 93A5  
1:25000

-10-



5817000 m

5817000 m

5815500 m

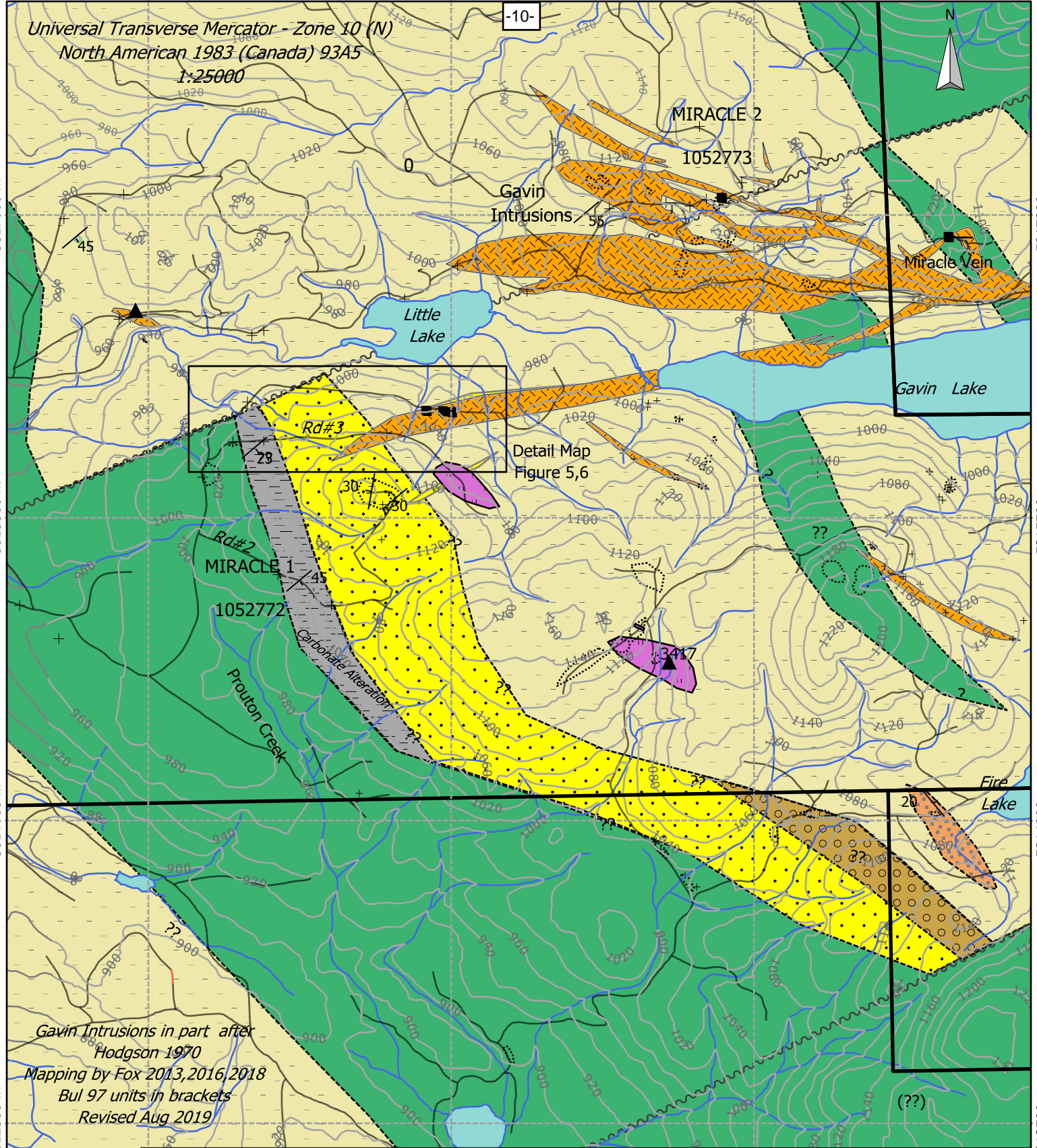
5815500 m

5814000 m

5814000 m

5812500 m

5812500 m



Gavin Intrusions in part after  
Hodgson 1970  
Mapping by Fox 2013, 2016, 2018  
Bul 97 units in brackets  
Revised Aug 2019

**LEGEND**

Gavin Intrusions: quartz porphyry	Tuff, breccia and siltstone	Fault (assumed)
<b>CRETACEOUS</b>	Black aegillite	Showing
Augite basalt (2a)	Volcanic siltstone, tuff, argillite (1)	Rock analysis
<b>UPPER TRIASSIC (NICOLA GROUP)</b>	Sandstone (Age??)	Outcrop
Gabbro and pyroxenite (7)	Outcrop area	
Conglomerate	Bedding	

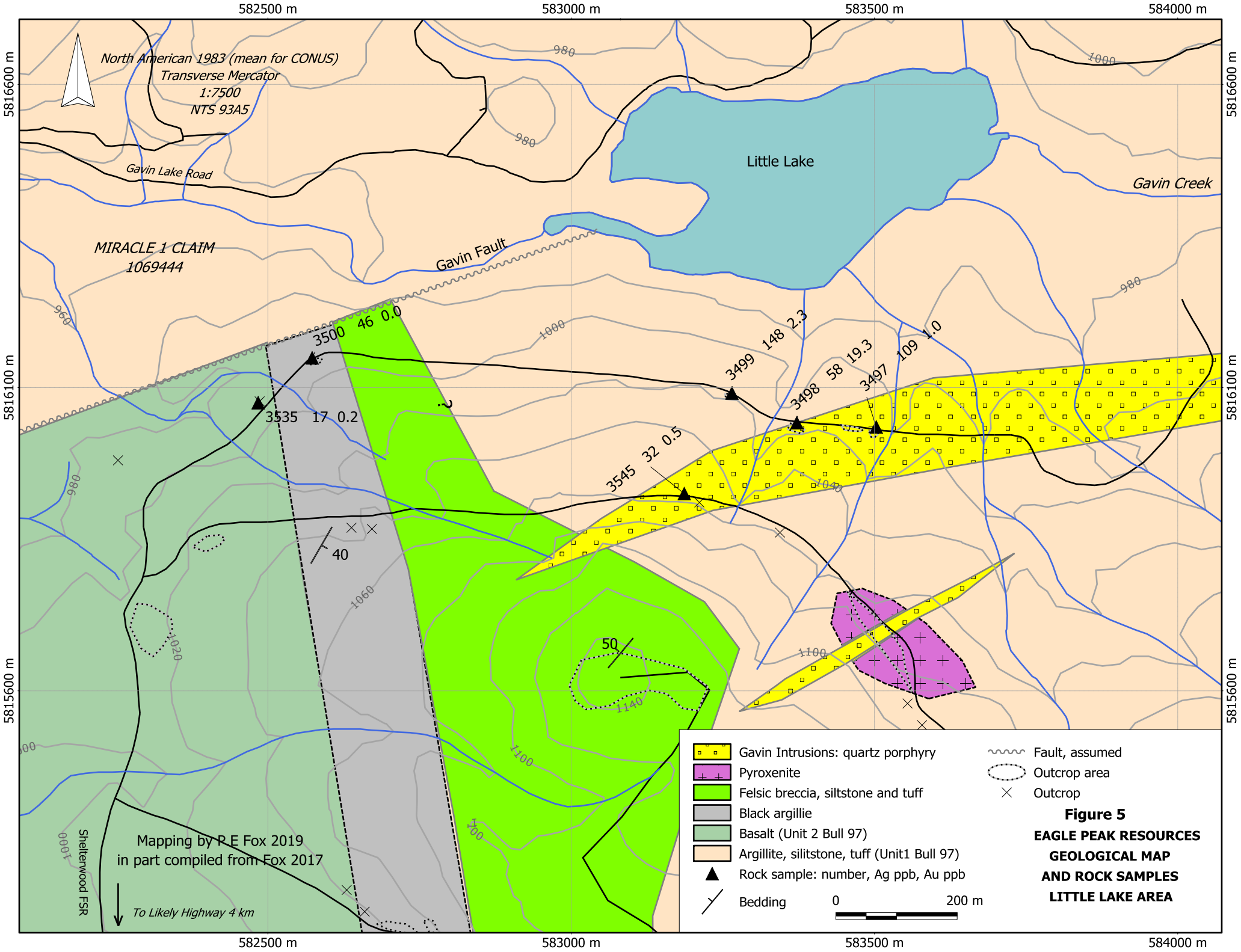
0 500 m

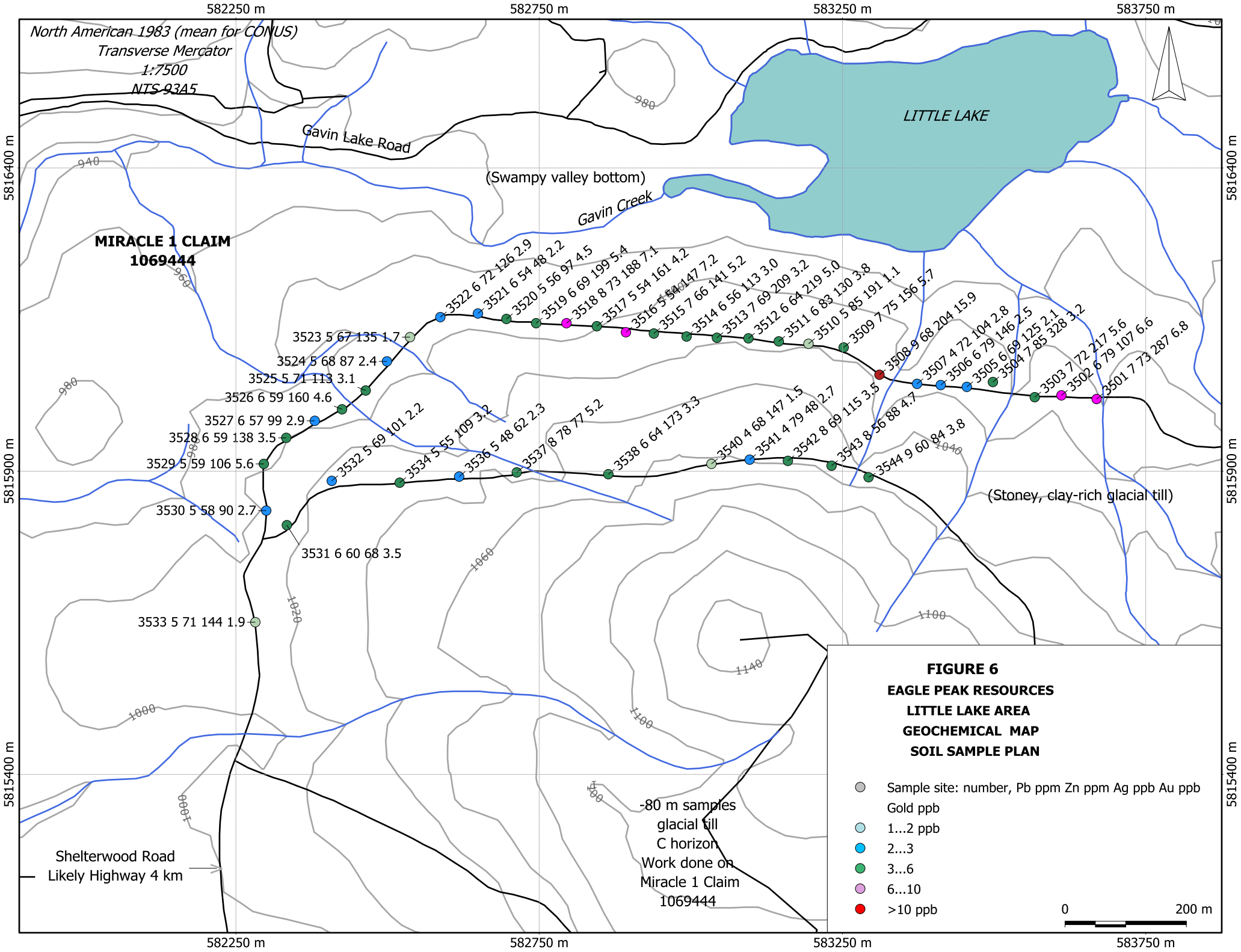
**Figure 4**  
**EAGLE PEAK RESOURCES**  
**MIRACLE PROPERTY**  
**GEOLOGICAL MAP**

582000 m

583500 m

585000 m





**MIRACLE 1 CLAIM**  
**1069444**

(Swampy valley bottom)

LITTLE LAKE

(Stoney, clay-rich glacial till)

Shelterwood Road  
Likely Highway 4 km

-80 m samples  
glacial till  
C horizon  
Work done on  
Miracle 1 Claim  
1069444

**FIGURE 6**  
**EAGLE PEAK RESOURCES**  
**LITTLE LAKE AREA**  
**GEOCHEMICAL MAP**  
**SOIL SAMPLE PLAN**

- Sample site: number, Pb ppm Zn ppm Ag ppb Au ppb  
Gold ppb
- 1...2 ppb
- 2...3
- 3...6
- 6...10
- >10 ppb



**STATEMENT OF QUALIFICATIONS**

I, Peter E. Fox of Richmond, British Columbia do hereby certify that I:

- am a graduate of Queens University in Kingston, Ontario with a Bachelor of Science and Master of Science degrees in Geological Sciences in 1959 and 1962, and a graduate of Carleton University, Ottawa, Ontario with a degree of Doctor of Philosophy in 1966.
- am a member of the Association of Professional Engineers and Geoscientists of British Columbia #8133.
- have practiced my profession since 1966.
- am the author of the report entitled “Assessment Report, Geological and Geochemical Report, Miracle Prospect” dated September 15, 2019 and supervised all of the work therein.

Dated at Richmond, British Columbia this 15th Day of September, 2019

Respectfully submitted,



---

Peter E. Fox PhD.,P.Eng.

September 15, 2019



**BIBLIOGRAPHY**

Bailey, D.G., 1990: Geology of the Central Quesnel Belt, British Columbia; B.C. Ministry Energy, Mines and Petroleum Resources, Open File 1990-31.

Bailey, D.G. and Hodgson C.J., 1978. Transported Altered Wall Rock in Laharic Breccias at the Cariboo-Bell Cu-Ai Porphyry Deposit, British Columbia. *Econ geology* v74 125-128.

Crandall, J. T., 1979: Soil Geochemical Report on the Gavin Property, Brican Resources Ltd. Aris report 7333.

Carter, Dr. N. C. and Barclay, R J., 1984. Geochemical and Geophysical Report Have Claim Group, Longboat Resources Inc. Aris report 12683.

Fox, P.E., 1988. Diamond Drill Program on the Maud 1-7 Claims. Aris report 17598.

Fox, P.E., 2009. Geochemical Report on the Miracle Property. Aris report 31168

Fox, P.E., 2010. Diamond Drilling Report Miracle Prospect. Aris report 31797.

Fox, P.E., 2013. Geological and Geochemical Report on the Miracle Property. Aris report 33985.

Fox, P.E., 2015. Geological and Geochemical Report on the Miracle Property. Aris report 35395.

Fox, P.E., 2015. Geological and Geochemical Report on the Miracle Property. Aris report 35574.

Fox, P.E., 2016. Geological and Geochemical Report on the Miracle Property. Aris report 36250.

Fox, P.E., 2017. Geological and Geochemical Report on the Miracle Property. Aris report 37012.

Fox, P.E., 2018. Geological and Geochemical Report on the Miracle Property. Aris report 37822

Gilmour, W. R, 1984: Geochemical and Geological Assessment Report on the Gavin Property, Brican Resources Ltd. Aris report 12693

Hodgson, C. J., 1970 Report on the Gavin Lake Cu-Mo Property, Amax Inc Aris report 2733.

Panteleyev, A., Bailey, D.G., Bloodgood, M.A. and Hancock, K.D., 1996: Geology and mineral deposits of the Quesnel River - Horsefly map area, central Quesnel Trough, British Columbia; B.C. Ministry of Employment and Investment, Energy and Minerals Division, Geological Survey Branch, Bulletin 97, 155p.

Shore, Greg, 1979: Geophysical Surveys of the Gavin Lake Property, Brican Resources. Aris report 7396.

Wallis, J.E., 1995. Compilation and Evaluation Report Z Mineral Property. Aris report 23942.

Westervelt, R D., 1974: Geochemical Report on the GT 25-60 Mineral Claims Zubex Resources Ltd. Aris report 5105.

**APPENDIX I**

**MIRACLE PROPERTY**

**SOIL SAMPLE DATA**

**UTM NAD 83**

APPENDIX I  
SOIL SAMPLE DATA

Sample	wp	E	N	Sampler	Type	Material	Hor	Color	Topo	Depth cm	Pb ppm	Znppm	Ag ppm	Au ppb
3501	332	583669	5816019	Bailey	soil	Till	C	Bn	Hillside	20	7.25	73.1	287	6.8
3502	333	583611	5816025	Bailey	soil	Till	C	Bn	Hillside	20	6.33	79.4	107	6.6
3503	334	583567	5816022	Bailey	soil	Till	C	Bn	Hillside	20	6.74	71.5	217	5.6
3504	335	583498	5816047	Bailey	soil	Till	C	Bn	Hillside	15	6.51	85	328	3.2
3505	336	583455	5816039	Fox	soil	Till	C	Bn	Hillside	20	5.72	68.6	125	2.1
3506	337	583412	5816042	Fox	soil	Till	C	Bn	Hillside	20	5.79	78.6	146	2.5
3507	338	583373	5816044	Fox	soil	Till	C	Bn	Hillside	12	3.63	71.5	104	2.8
3508	339	583311	5816059	Fox	soil	Till	C	Bn	Hillside	20	9.46	68.1	204	15.9
3509	340	583252	5816104	Fox	soil	Till	C	Bn	Hillside	20	6.73	74.6	156	5.7
3510	341	583194	5816110	Fox	soil	Till	C	Bn	Hillside	25	5.18	85.3	191	1.1
3511	342	583145	5816114	Fox	soil	Till	C	Bn	Hillside	20	5.91	82.8	130	3.8
3512	343	583095	5816119	Fox	soil	Till	C	Bn	Hillside	20	5.87	63.7	219	5
3513	344	583043	5816120	Fox	soil	Till	C	Bn	Hillside	15	7.07	68.5	209	3.2
3514	345	582993	5816122	Fox	soil	Till	C	Bn	Hillside	20	6.02	55.9	113	3
3515	346	582939	5816127	Fox	soil	Till	C	Bn	Hillside	20	6.53	66.3	141	5.2
3516	347	582893	5816129	Fox	soil	Till	C	Bn	Hillside	20	5.34	53.8	147	7.2
3517	348	582845	5816139	Fox	soil	Till	C	Bn	Hillside	15	5.42	54.2	161	4.2
3518	349	582795	5816144	Fox	soil	Till	C	Bn	Hillside	20	7.64	73.2	188	7.1
3519	350	582745	5816144	Fox	soil	Till	C	Bn	Hillside	20	6.33	68.9	199	5.4
3520	351	582696	5816151	Fox	soil	Till	C	Grey	Hillside	15	5.12	56.4	97	4.5
3521	352	582649	5816160	Fox	soil	Till	C	Bn	Hillside	20	5.94	53.7	48	2.2
3522	353	582587	5816154	Fox	soil	Till	C	Bn	Hillside	15	5.69	71.9	126	2.9
3523	354	582537	5816121	Fox	soil	Till	C	Bn	Hillside	20	4.88	67.1	135	1.7
3524	355	582499	5816081	Fox	soil	Till	C	Bn	Hilltop	15	5.24	67.6	87	2.4
3525	356	582464	5816033	Fox	soil	Till	C	Grey	Hillside	20	5.11	71.3	113	3.1
3526	357	582425	5816002	Fox	soil	Till	C	Bn	Hilltop	10	6.04	59.2	160	4.6
3527	358	582380	5815983	Fox	soil	Till	C	Bn	Hilltop	10	5.98	57.2	99	2.9
3528	359	582333	5815955	Fox	soil	Till	C	Bn	Hilltop	15	5.53	59	138	3.5
3529	360	582296	5815912	Fox	soil	Till	C	Bn	Hillside	20	5.39	58.9	106	5.6
3530	361	582300	5815835	Fox	soil	Till	C	Bn	Hillside	15	5.17	58	90	2.7
3531	362	582334	5815811	Fox	soil	Till	C	Bn	Hillside	20	5.67	59.6	68	3.5
3532	363	582408	5815884	Fox	soil	Till	C	Bn	Hillside	20	5.41	68.5	101	2.2
3533	364	582282	5815651	Fox	soil	Till	C	Bn	Hillside	20	5.38	70.6	144	1.9

APPENDIX I  
SOIL SAMPLE DATA

Sample	wp	E	N	Sampler	Type	Material	Hor	Color	Topo	Depth cm	Pb ppm	Znppm	Ag ppm	Au ppb
3534	371	583778	5812849	Fox	soil	Till	C	Bn	Hillside	15	5.33	55.2	109	3.2
3536	372	585084	5813831	Fox	soil	Till	C	Bn	Hillside	20	4.89	48.1	62	2.3
3537	373	585261	5814026	Fox	soil	Till	C	Bn	Hillside	20	7.62	77.5	77	5.2
3538	374	585895	5814022	Fox	soil	Till	C	Bn	Hillside	15	5.72	63.6	173	3.3
3539	375	584667	5813663	Fox	soil	Till	B	Bn	Hillside	20	6.59	68.4	102	4.4
3540	376	584472	5813898	Fox	soil	Till	C	Bn	Hillside	15	4.17	68	147	1.5
3541	377	582591	5815883	Fox	soil	Till	C	Bn	Hillside	20	3.73	78.8	48	2.7
3542	378	582653	5815894	Fox	soil	Till	C	Bn	Hillside	20	7.61	68.9	115	3.5
3543	379	582739	5815899	Fox	soil	Till	C	Bn	Hillside	15	8.04	56	88	4.7
3544	380	582803	5815901	Fox	soil	Till	C	Bn	Hillside	20	8.58	60	84	3.8
													136.9535	4.062791

APPENDIX I  
SOIL SAMPLE DATA

Sample	wp	E	N	Sampler	Type	Material	Hor	Color	Topo	Depth cm	Pb ppm	Znppm	Ag ppm	Au ppb
3534	371	583778	5812849	Fox	soil	Till	C	Bn	Hillside	15	5.33	55.2	109	3.2
3536	372	585084	5813831	Fox	soil	Till	C	Bn	Hillside	20	4.89	48.1	62	2.3
3537	373	585261	5814026	Fox	soil	Till	C	Bn	Hillside	20	7.62	77.5	77	5.2
3538	374	585895	5814022	Fox	soil	Till	C	Bn	Hillside	15	5.72	63.6	173	3.3
3539	375	584667	5813663	Fox	soil	Till	B	Bn	Hillside	20	6.59	68.4	102	4.4
3540	376	584472	5813898	Fox	soil	Till	C	Bn	Hillside	15	4.17	68	147	1.5
3541	377	582591	5815883	Fox	soil	Till	C	Bn	Hillside	20	3.73	78.8	48	2.7
3542	378	582653	5815894	Fox	soil	Till	C	Bn	Hillside	20	7.61	68.9	115	3.5
3543	379	582739	5815899	Fox	soil	Till	C	Bn	Hillside	15	8.04	56	88	4.7
3544	380	582803	5815901	Fox	soil	Till	C	Bn	Hillside	20	8.58	60	84	3.8

**APPENDIX II**  
**MIRACLE PROPERTY**  
**ROCK SAMPLE DATA**  
**UTM NAD 83**

APENDIX II  
MIRACLE PROJECT ROCK SAMPLES

sample	wp	type	Sampler	E	N	Pb ppm	Znppm	Ag ppm	Au ppb	Description
3497	328	rk	Fox	583503	5816035	9.76	55.6	109	1	Rusty, Fe carb altered quartz porphyry, trace pyrite
3498	329	rk	Fox	583372	5816042	9.63	17.8	58	19.3	Brown/orange pyritic quartz porphyry, 20% quartz phenos
3499	330	rk	Fox	583265	5816091	2.39	87	148	2.3	Black pyritic argillite, very fine grained, 2% pyrite
3500	331	rk	Fox	582573	5816149	0.67	66.9	46	0.02	Black argillite rubble, pyritic 2%,
3535	230	rk	Fox	582484	5816075	0.84	85.8	17	0.2	Rusty, Fe carb altered quartz porphyry, trace pyrite
3545	380	rk	Fox	582858	5815899	16.82	23.1	32	0.5	Rusty, Fe carb altered quartz porphyry, trace pyrite

## APPENDIX III

## MIRACLE PROPERTY

## CERTIFICATES

SAMPLE PREPARATION AND ANALYTICAL PROCEDURES					
Procedure Code	Number of Samples	Code Description	Test Wgt (g)	Report Status	Lab
DY060	42	Dry at 60C			VAN
SS80	42	Dry at 60C sieve 100g to -80 mesh			VAN
SVRJT	42	Save all or part of Soil Reject			VAN
AQ251	42	1:1:1 Aqua Regia digestion Ultratrace ICP-MS analysis	15	Completed	VAN

*Note- sample 3546 not included*



**BUREAU VERITAS** MINERAL LABORATORIES  
Canada

[www.bureauveritas.com/um](http://www.bureauveritas.com/um)

Bureau Veritas Commodities Canada Ltd.  
9050 Shaughnessy St Vancouver British Columbia V6P 6E5 Canada  
PHONE (604) 253-3158

**Client:** **Eagle Peak Resources Inc.**  
910 - 475 W. Georgia St.  
Vancouver British Columbia V6B 4M9 Canada

Submitted By: Lloyd Tattersall  
Receiving Lab: Canada-Vancouver  
Received: July 30, 2019  
Report Date: September 03, 2019  
Page: 1 of 3

# CERTIFICATE OF ANALYSIS

VAN19002023.1

## CLIENT JOB INFORMATION

Project: Miracle  
Shipment ID:  
P.O. Number  
Number of Samples: 44

## SAMPLE DISPOSAL

DISP-PLP Dispose of Pulp After 90 days  
DISP-RJT-SOIL Immediate Disposal of Soil Reject

Bureau Veritas does not accept responsibility for samples left at the laboratory after 90 days without prior written instructions for sample storage or return.

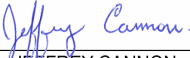
Invoice To: Eagle Peak Resources Inc.  
910 - 475 W. Georgia St.  
Vancouver British Columbia V6B 4M9  
Canada

CC: Peter Fox

## SAMPLE PREPARATION AND ANALYTICAL PROCEDURES

Procedure Code	Number of Samples	Code Description	Test Wgt (g)	Report Status	Lab
DY060	43	Dry at 60C			VAN
SS80	43	Dry at 60C sieve 100g to -80 mesh			VAN
AQ251	43	1:1:1 Aqua Regia digestion Ultratrace ICP-MS analysis	15	Completed	VAN
DISPL	43	Disposal of pulps			VAN

## ADDITIONAL COMMENTS

  
JEFFREY CANNON  
Geochemistry Department Supervisor

This report supersedes all previous preliminary and final reports with this file number dated prior to the date on this certificate. Signature indicates final approval; preliminary reports are unsigned and should be used for reference only. All results are considered the confidential property of the client. Bureau Veritas assumes the liabilities for actual cost of analysis only. Results apply to samples as submitted.  
\*\*\* asterisk indicates that an analytical result could not be provided due to unusually high levels of interference from other elements.



Bureau Veritas Commodities Canada Ltd.

9050 Shaughnessy St Vancouver British Columbia V6P 6E5 Canada

PHONE (604) 253-3158

**Client:** Eagle Peak Resources Inc.  
910 - 475 W. Georgia St.  
Vancouver British Columbia V6B 4M9 Canada

**Project:** Miracle  
**Report Date:** September 03, 2019

**Page:** 2 of 3

**Part:** 1 of 2

# CERTIFICATE OF ANALYSIS

VAN19002023.1

Method	Analyte	AQ251	AQ251	AQ251	AQ251	AQ251	AQ251	AQ251	AQ251	AQ251	AQ251	AQ251	AQ251	AQ251	AQ251	AQ251	AQ251	AQ251	AQ251	AQ251	AQ251
		Mo	Cu	Pb	Zn	Ag	Ni	Co	Mn	Fe	As	U	Au	Th	Sr	Cd	Sb	Bi	V	Ca	P
		ppm	ppm	ppm	ppm	ppb	ppm	ppm	ppm	%	ppm	ppm	ppb	ppm	ppm	ppm	ppm	ppm	ppm	%	%
		MDL	MDL	MDL	MDL	MDL	MDL	MDL	MDL	MDL	MDL	MDL	MDL	MDL	MDL	MDL	MDL	MDL	MDL	MDL	MDL
3501	Soil	2.39	83.08	6.33	79.4	107	54.3	22.4	866	4.25	42.7	0.5	6.6	3.8	55.6	0.25	2.02	0.38	101	0.52	0.112
3502	Soil	1.80	83.23	6.74	71.5	217	56.1	22.4	875	4.58	29.1	0.6	5.6	4.2	72.7	0.34	1.35	0.23	106	0.66	0.094
3503	Soil	1.32	68.94	6.51	85.0	328	62.3	21.2	1323	3.81	21.1	0.4	3.2	3.7	101.5	0.68	0.90	0.22	85	0.98	0.067
3504	Soil	1.31	48.98	5.72	68.6	125	43.2	15.1	532	3.23	16.4	0.3	2.1	2.4	37.8	0.16	0.63	0.16	80	0.38	0.091
3505	Soil	1.31	46.62	5.79	78.6	146	67.2	18.4	573	3.60	16.5	0.4	2.5	3.0	45.1	0.16	0.72	0.18	90	0.42	0.097
3506	Soil	0.78	101.54	3.63	71.5	104	314.4	47.7	756	6.45	13.6	0.3	2.8	1.7	149.5	0.05	0.51	0.14	153	0.75	0.127
3507	Soil	2.17	62.29	9.46	68.1	204	63.1	18.4	575	3.98	33.4	0.4	15.9	2.7	38.7	0.15	1.19	0.34	93	0.65	0.084
3508	Soil	1.94	128.13	6.73	74.6	156	78.2	22.3	728	4.93	44.2	0.6	5.7	4.6	51.2	0.26	1.60	0.22	109	0.61	0.116
3509	Soil	1.39	39.15	5.18	85.3	191	63.6	16.9	695	3.24	17.7	0.3	1.1	2.5	39.9	0.23	0.61	0.15	81	0.50	0.124
3510	Soil	1.99	65.18	5.91	82.8	130	77.8	23.8	800	3.69	25.5	0.4	3.8	2.4	37.4	0.23	0.89	0.15	97	0.46	0.112
3511	Soil	1.98	78.22	5.87	63.7	219	85.6	23.7	770	4.40	32.9	0.6	5.0	3.2	57.6	0.21	1.12	0.17	102	0.72	0.106
3512	Soil	1.95	102.18	7.07	68.5	209	83.5	25.4	887	4.54	51.6	0.7	3.2	3.7	61.4	0.24	1.40	0.25	107	0.70	0.102
3513	Soil	L.N.R.	L.N.R.	L.N.R.	L.N.R.	L.N.R.	L.N.R.	L.N.R.	L.N.R.	L.N.R.	L.N.R.	L.N.R.	L.N.R.	L.N.R.	L.N.R.	L.N.R.	L.N.R.	L.N.R.	L.N.R.	L.N.R.	L.N.R.
3514	Soil	1.65	84.25	6.02	55.9	113	113.5	25.7	837	4.37	49.0	0.5	3.0	3.5	56.4	0.19	1.14	0.13	109	0.76	0.121
3515	Soil	1.75	85.56	6.53	66.3	141	100.2	26.1	770	4.44	46.1	0.5	5.2	3.8	64.6	0.15	1.20	0.16	106	0.78	0.124
3516	Soil	1.29	62.13	5.34	53.8	147	80.2	17.9	603	3.45	29.1	0.5	7.2	3.5	61.3	0.21	0.87	0.14	85	0.71	0.104
3517	Soil	1.77	55.85	5.42	54.2	161	67.0	19.5	565	3.78	35.0	0.4	4.2	2.8	58.9	0.25	0.96	0.13	93	0.74	0.088
3518	Soil	2.09	132.24	7.64	73.2	188	83.5	28.4	826	5.07	50.5	0.6	7.1	4.0	52.6	0.29	1.40	0.20	118	0.64	0.096
3519	Soil	1.80	68.31	6.33	68.9	199	74.7	20.3	619	3.76	28.1	0.5	5.4	2.9	51.0	0.27	0.96	0.16	92	0.65	0.092
3520	Soil	1.76	60.10	5.12	56.4	97	75.0	19.9	512	3.41	29.9	0.5	4.5	3.2	36.0	0.11	0.95	0.11	87	0.42	0.087
3521	Soil	1.99	66.28	5.94	53.7	48	50.4	15.3	542	3.29	20.4	0.6	2.2	3.6	37.7	0.16	0.95	0.18	79	0.47	0.098
3522	Soil	1.51	64.81	5.69	71.9	126	69.8	19.5	600	3.84	23.7	0.4	2.9	3.2	40.9	0.17	0.88	0.14	94	0.56	0.096
3523	Soil	1.41	85.82	4.88	67.1	135	164.4	33.4	780	5.06	26.0	0.4	1.7	2.5	46.8	0.16	0.76	0.11	123	0.67	0.122
3524	Soil	1.38	80.84	5.24	67.6	87	116.9	27.9	577	4.77	25.3	0.4	2.4	2.8	45.4	0.10	0.96	0.10	117	0.57	0.106
3525	Soil	1.41	61.94	5.11	71.3	113	67.2	19.6	607	3.89	20.8	0.5	3.1	3.4	46.2	0.13	0.83	0.12	98	0.50	0.097
3526	Soil	1.63	78.69	6.04	59.2	160	68.6	22.2	733	4.02	26.5	0.6	4.6	4.0	61.4	0.25	1.05	0.14	96	0.73	0.105
3527	Soil	1.49	76.04	5.98	57.2	99	62.8	19.8	659	3.82	23.4	0.6	2.9	4.6	51.9	0.18	1.08	0.16	88	0.60	0.116
3528	Soil	1.44	76.59	5.53	59.0	138	69.8	21.2	752	3.86	24.6	0.5	3.5	3.7	101.8	0.24	1.20	0.12	89	2.52	0.119
3529	Soil	1.75	83.91	5.39	58.9	106	62.0	18.5	598	3.95	19.7	0.5	5.6	3.5	44.1	0.11	0.99	0.22	98	0.53	0.099
3530	Soil	1.39	62.50	5.17	58.0	90	55.9	18.5	608	3.38	16.4	0.5	2.7	3.5	117.6	0.20	0.91	0.13	83	3.17	0.113



Bureau Veritas Commodities Canada Ltd.

9050 Shaughnessy St Vancouver British Columbia V6P 6E5 Canada

PHONE (604) 253-3158

**Client:** Eagle Peak Resources Inc.  
910 - 475 W. Georgia St.  
Vancouver British Columbia V6B 4M9 Canada

**Project:** Miracle  
**Report Date:** September 03, 2019

**Page:** 2 of 3

**Part:** 2 of 2

# CERTIFICATE OF ANALYSIS

VAN19002023.1

Method	Analyte	AQ251	AQ251	AQ251	AQ251	AQ251	AQ251	AQ251	AQ251	AQ251	AQ251	AQ251	AQ251	AQ251	AQ251	AQ251	AQ251	AQ251
		La	Cr	Mg	Ba	Ti	B	Al	Na	K	W	Sc	Tl	S	Hg	Se	Te	Ga
Unit		ppm	ppm	%	ppm	%	ppm	%	%	ppm	ppm	ppm	%	ppb	ppm	ppm	ppm	ppm
MDL		0.5	0.5	0.01	0.5	0.001	1	0.01	0.001	0.01	0.1	0.1	0.02	0.02	5	0.1	0.02	0.1
3501	Soil	13.5	92.6	1.13	232.4	0.105	5	1.94	0.016	0.33	0.2	9.8	0.21	<0.02	46	0.4	0.11	6.0
3502	Soil	14.3	86.9	1.34	193.4	0.093	4	2.22	0.019	0.30	0.2	10.2	0.18	<0.02	61	0.3	0.09	6.0
3503	Soil	12.0	80.8	1.21	260.7	0.078	8	1.90	0.020	0.24	0.2	7.3	0.13	<0.02	49	0.6	0.08	5.3
3504	Soil	9.5	82.0	0.83	148.7	0.079	3	1.63	0.014	0.15	0.1	4.7	0.09	<0.02	28	0.3	0.08	4.5
3505	Soil	10.0	105.3	1.11	222.3	0.094	5	1.88	0.015	0.27	0.2	6.3	0.13	<0.02	54	0.2	0.10	5.6
3506	Soil	8.8	499.6	4.13	429.3	0.129	2	3.61	0.016	0.97	<0.1	12.6	0.29	<0.02	36	0.2	0.03	8.6
3507	Soil	10.3	113.1	1.35	570.2	0.090	2	2.00	0.014	0.23	0.2	7.2	0.14	<0.02	55	0.3	0.22	5.6
3508	Soil	16.6	113.1	1.36	214.7	0.100	3	2.21	0.021	0.26	0.3	14.3	0.20	<0.02	109	0.2	0.14	7.0
3509	Soil	8.1	110.4	1.05	186.5	0.086	4	1.75	0.013	0.20	0.1	4.8	0.10	<0.02	47	0.3	0.08	5.9
3510	Soil	8.9	138.6	1.30	168.9	0.095	4	1.87	0.014	0.27	0.2	6.7	0.14	<0.02	45	0.2	0.09	5.9
3511	Soil	11.9	152.1	1.60	169.8	0.095	4	2.15	0.019	0.24	0.2	10.6	0.18	<0.02	54	0.3	0.05	6.3
3512	Soil	15.3	139.5	1.49	175.1	0.099	4	2.19	0.018	0.25	0.2	11.5	0.19	<0.02	62	0.1	0.09	6.6
3513	Soil	L.N.R.	L.N.R.	L.N.R.	L.N.R.	L.N.R.	L.N.R.	L.N.R.	L.N.R.	L.N.R.	L.N.R.	L.N.R.	L.N.R.	L.N.R.	L.N.R.	L.N.R.	L.N.R.	L.N.R.
3514	Soil	11.4	219.0	2.03	149.1	0.097	2	2.09	0.017	0.24	0.2	9.2	0.15	<0.02	66	0.4	0.05	6.0
3515	Soil	13.4	164.5	1.77	165.9	0.091	3	2.09	0.019	0.23	0.2	10.2	0.20	<0.02	77	0.1	0.05	6.0
3516	Soil	12.1	144.4	1.29	139.6	0.094	2	1.66	0.018	0.15	0.1	7.2	0.13	<0.02	53	0.4	0.03	5.3
3517	Soil	9.6	127.1	1.31	155.1	0.085	4	1.74	0.017	0.18	0.2	7.1	0.16	0.02	41	0.6	0.05	4.8
3518	Soil	15.9	126.3	1.55	235.3	0.108	3	2.59	0.016	0.32	0.2	15.4	0.28	<0.02	58	0.5	0.05	6.9
3519	Soil	11.6	146.2	1.20	163.0	0.090	3	1.83	0.015	0.16	0.2	8.3	0.11	<0.02	37	<0.1	0.08	5.4
3520	Soil	12.1	159.4	1.20	107.8	0.105	3	1.58	0.015	0.12	0.2	5.9	0.10	<0.02	26	0.2	0.03	5.2
3521	Soil	14.3	76.6	0.84	97.1	0.075	2	1.33	0.015	0.14	0.2	7.9	0.11	<0.02	23	0.4	0.06	4.0
3522	Soil	12.1	137.5	1.23	128.7	0.096	2	1.84	0.014	0.16	0.2	7.4	0.10	<0.02	34	0.2	0.05	5.7
3523	Soil	8.9	293.0	2.54	120.0	0.116	1	2.45	0.013	0.27	0.1	6.7	0.10	<0.02	26	0.6	0.04	6.1
3524	Soil	10.8	270.4	1.87	103.9	0.117	2	2.09	0.015	0.15	0.2	7.1	0.10	<0.02	43	0.4	0.03	6.0
3525	Soil	13.0	118.2	1.15	122.9	0.098	2	1.79	0.016	0.15	0.1	7.3	0.09	<0.02	51	<0.1	0.06	5.4
3526	Soil	14.2	112.1	1.17	150.8	0.090	2	1.84	0.019	0.17	0.2	10.1	0.13	<0.02	62	0.3	0.09	5.5
3527	Soil	18.0	94.2	1.07	148.3	0.096	2	1.70	0.021	0.17	0.2	11.4	0.11	<0.02	82	0.3	0.06	5.5
3528	Soil	12.7	101.9	1.20	157.3	0.085	3	1.63	0.021	0.18	0.2	10.8	0.13	<0.02	56	0.1	0.07	5.4
3529	Soil	15.6	109.9	1.08	136.5	0.109	2	1.78	0.019	0.28	0.2	11.9	0.15	<0.02	56	0.2	0.07	5.6
3530	Soil	12.8	87.3	1.11	136.6	0.087	6	1.55	0.023	0.19	0.2	8.3	0.12	<0.02	63	0.4	0.05	4.8



**BUREAU VERITAS** MINERAL LABORATORIES  
Canada

[www.bureauveritas.com/um](http://www.bureauveritas.com/um)

Bureau Veritas Commodities Canada Ltd.

9050 Shaughnessy St Vancouver British Columbia V6P 6E5 Canada

PHONE (604) 253-3158

**Client:** **Eagle Peak Resources Inc.**  
910 - 475 W. Georgia St.  
Vancouver British Columbia V6B 4M9 Canada

**Project:** Miracle  
**Report Date:** September 03, 2019

**Page:** 3 of 3

**Part:** 1 of 2

# CERTIFICATE OF ANALYSIS

**VAN19002023.1**

Method	Analyte	AQ251	AQ251	AQ251	AQ251	AQ251	AQ251	AQ251	AQ251	AQ251	AQ251	AQ251	AQ251	AQ251	AQ251	AQ251	AQ251	AQ251	AQ251	AQ251	AQ251
		Mo	Cu	Pb	Zn	Ag	Ni	Co	Mn	Fe	As	U	Au	Th	Sr	Cd	Sb	Bi	V	Ca	P
Unit		ppm	ppm	ppm	ppm	ppb	ppm	ppm	ppm	%	ppm	ppm	ppb	ppm	ppm	ppm	ppm	ppm	ppm	%	%
MDL		0.01	0.01	0.01	0.1	2	0.1	0.1	1	0.01	0.1	0.1	0.2	0.1	0.5	0.01	0.02	0.02	1	0.01	0.001
3531	Soil	1.46	71.90	5.67	59.6	68	60.2	19.9	681	3.83	20.8	0.5	3.5	4.1	99.2	0.18	1.09	0.14	90	2.51	0.112
3532	Soil	1.59	73.20	5.41	68.5	101	68.0	20.0	576	4.26	27.2	0.5	2.2	3.7	50.5	0.16	1.00	0.21	104	0.74	0.100
3533	Soil	1.64	62.70	5.38	70.6	144	56.1	17.8	602	3.80	16.2	0.4	1.9	3.6	46.5	0.14	1.16	0.10	97	0.60	0.088
3534	Soil	1.05	53.39	5.33	55.2	109	51.8	14.7	538	3.27	16.0	0.5	3.2	4.7	69.4	0.14	0.84	0.13	77	1.22	0.102
3536	Soil	1.00	42.85	4.89	48.1	62	37.0	12.8	537	2.89	14.8	0.5	2.3	4.3	161.6	0.24	0.75	0.13	67	4.61	0.107
3537	Soil	1.60	124.24	7.62	77.5	77	80.8	26.2	1032	4.91	31.5	0.6	5.2	5.0	67.3	0.20	1.26	0.20	117	0.75	0.111
3538	Soil	1.67	84.44	5.72	63.6	173	85.7	25.3	563	4.40	25.9	0.6	3.3	4.1	44.4	0.11	0.98	0.13	110	0.52	0.061
3539	Soil	1.43	100.83	6.59	68.4	102	86.9	23.3	843	4.51	27.6	0.6	4.4	3.9	54.0	0.14	0.98	0.21	109	0.66	0.126
3540	Soil	1.24	74.26	4.17	68.0	147	126.2	24.8	497	4.42	16.8	0.4	1.5	1.7	37.5	0.12	0.54	0.13	115	0.50	0.072
3541	Soil	0.89	135.34	3.73	78.8	48	381.7	54.0	947	6.06	22.5	0.3	2.7	1.1	112.2	0.12	0.33	0.07	159	2.66	0.157
3542	Soil	1.80	106.61	7.61	68.9	115	151.6	32.1	946	4.99	30.2	0.4	3.5	2.6	54.3	0.14	0.92	0.21	119	0.70	0.132
3543	Soil	1.79	77.35	8.04	56.0	88	70.9	18.9	588	3.96	33.9	0.5	4.7	2.1	40.7	0.10	1.05	0.18	98	0.48	0.099
3544	Soil	1.75	72.76	8.58	60.0	84	277.2	35.8	804	4.79	71.2	0.5	3.8	2.2	146.6	0.11	1.06	0.25	110	1.27	0.113
3413	Soil	1.93	84.12	7.25	73.1	287	68.4	23.5	809	4.29	38.1	0.7	6.8	2.5	62.8	0.25	1.22	0.17	106	0.76	0.115



Bureau Veritas Commodities Canada Ltd.

9050 Shaughnessy St Vancouver British Columbia V6P 6E5 Canada

PHONE (604) 253-3158

**Client:** **Eagle Peak Resources Inc.**  
910 - 475 W. Georgia St.  
Vancouver British Columbia V6B 4M9 Canada

**Project:** Miracle  
**Report Date:** September 03, 2019

**Page:** 3 of 3

**Part:** 2 of 2

# CERTIFICATE OF ANALYSIS

**VAN19002023.1**

Method	Analyte	AQ251	AQ251	AQ251	AQ251	AQ251	AQ251	AQ251	AQ251	AQ251	AQ251	AQ251	AQ251	AQ251	AQ251	AQ251	AQ251	AQ251
		La	Cr	Mg	Ba	Ti	B	Al	Na	K	W	Sc	Tl	S	Hg	Se	Te	Ga
Unit		ppm	ppm	%	ppm	%	ppm	%	%	ppm	ppm	ppm	%	ppb	ppm	ppm	ppm	ppm
MDL		0.5	0.5	0.01	0.5	0.001	1	0.01	0.001	0.01	0.1	0.1	0.02	0.02	5	0.1	0.02	0.1
3531	Soil	14.4	81.7	1.14	147.0	0.093	4	1.76	0.024	0.18	0.2	9.0	0.12	<0.02	57	0.2	0.05	5.2
3532	Soil	12.1	113.4	1.24	144.4	0.095	3	2.03	0.018	0.18	0.2	9.9	0.12	<0.02	52	<0.1	0.05	5.4
3533	Soil	11.4	97.1	1.00	139.5	0.104	2	1.78	0.016	0.17	0.2	7.6	0.12	<0.02	62	0.3	0.04	5.8
3534	Soil	14.3	75.9	0.96	122.3	0.088	2	1.54	0.020	0.14	0.1	8.2	0.10	<0.02	55	<0.1	0.04	4.3
3536	Soil	14.7	61.2	0.96	151.6	0.081	4	1.34	0.025	0.12	0.1	6.7	0.10	<0.02	38	0.2	0.06	4.1
3537	Soil	17.1	113.6	1.46	193.9	0.109	3	2.39	0.023	0.28	0.2	13.9	0.16	<0.02	78	0.2	0.06	6.6
3538	Soil	12.4	136.0	1.45	157.3	0.111	3	2.21	0.019	0.19	0.2	11.4	0.12	<0.02	72	0.2	0.09	6.3
3539	Soil	16.2	122.9	1.58	141.6	0.099	4	2.27	0.015	0.21	0.2	12.0	0.14	<0.02	85	0.2	0.06	6.5
3540	Soil	8.2	233.5	1.98	122.2	0.122	5	2.32	0.009	0.19	0.1	6.1	0.07	<0.02	37	<0.1	0.03	6.6
3541	Soil	6.0	440.3	5.43	153.4	0.135	3	3.74	0.012	0.72	<0.1	5.5	0.10	<0.02	28	<0.1	0.03	8.8
3542	Soil	12.4	264.2	2.54	155.3	0.110	3	2.57	0.014	0.32	0.2	9.5	0.14	<0.02	71	0.4	0.06	6.9
3543	Soil	12.0	117.1	1.23	146.9	0.080	3	1.71	0.010	0.19	0.1	7.6	0.11	<0.02	39	0.3	0.08	4.8
3544	Soil	11.8	122.5	1.91	429.8	0.109	3	1.88	0.014	0.30	0.2	11.3	0.16	0.04	62	0.3	0.04	5.5
3413	Soil	14.1	97.3	1.28	211.0	0.107	2	2.23	0.015	0.19	0.2	10.6	0.16	<0.02	64	0.7	0.10	6.5



Bureau Veritas Commodities Canada Ltd.  
9050 Shaughnessy St Vancouver British Columbia V6P 6E5 Canada  
PHONE (604) 253-3158

**Client:** Eagle Peak Resources Inc.  
910 - 475 W. Georgia St.  
Vancouver British Columbia V6B 4M9 Canada

Project: Miracle  
Report Date: September 03, 2019

Page: 1 of 1

Part: 1 of 2

# QUALITY CONTROL REPORT

VAN19002023.1

Method	AQ251	AQ251	AQ251	AQ251	AQ251	AQ251	AQ251	AQ251	AQ251	AQ251	AQ251	AQ251	AQ251	AQ251	AQ251	AQ251	AQ251	AQ251	AQ251	AQ251	AQ251	
Analyte	Mo	Cu	Pb	Zn	Ag	Ni	Co	Mn	Fe	As	U	Au	Th	Sr	Cd	Sb	Bi	V	Ca	P		
Unit	ppm	ppm	ppm	ppm	ppb	ppm	ppm	ppm	%	ppm	ppm	ppb	ppm	ppm	ppm	ppm	ppm	ppm	%	%		
MDL	0.01	0.01	0.01	0.1	2	0.1	0.1	1	0.01	0.1	0.1	0.2	0.1	0.5	0.01	0.02	0.02	1	0.01	0.001		
Pulp Duplicates																						
3510	Soil	1.99	65.18	5.91	82.8	130	77.8	23.8	800	3.69	25.5	0.4	3.8	2.4	37.4	0.23	0.89	0.15	97	0.46	0.112	
REP 3510	QC	1.88	61.58	5.92	78.2	117	78.9	22.3	737	3.66	25.0	0.4	1.5	2.3	36.8	0.21	0.91	0.15	97	0.46	0.112	
3544	Soil	1.75	72.76	8.58	60.0	84	277.2	35.8	804	4.79	71.2	0.5	3.8	2.2	146.6	0.11	1.06	0.25	110	1.27	0.113	
REP 3544	QC	1.80	69.95	8.58	59.5	83	286.8	37.4	824	4.78	73.3	0.5	3.2	2.2	151.0	0.11	1.00	0.24	111	1.31	0.113	
Reference Materials																						
STD DS11	Standard	14.57	142.54	134.66	359.4	1707	80.1	14.3	1033	3.21	43.9	2.6	77.5	8.9	68.8	2.31	9.56	10.87	49	1.06	0.067	
STD DS11	Standard	13.99	145.26	131.52	343.8	1646	74.2	13.2	1016	3.13	42.3	2.6	71.2	8.3	66.4	2.26	7.36	11.60	49	1.05	0.072	
STD OREAS262	Standard	0.66	116.52	58.80	142.9	469	66.8	28.4	501	3.33	37.5	1.3	81.0	11.1	38.4	0.63	6.23	1.02	21	2.95	0.040	
STD OREAS262	Standard	0.60	112.22	54.85	151.9	438	60.3	26.1	519	3.27	36.0	1.2	48.9	9.2	33.6	0.65	3.45	1.01	22	2.91	0.041	
STD DS11 Expected		14.6	149	138	345	1710	77.7	14.2	1055	3.1	42.8	2.59	79	7.65	67.3	2.37	8.74	12.2	50	1.063	0.0701	
STD OREAS262 Expected		0.68	118	56	154	450	62	26.9	530	3.284	35.8	1.22	65	9.33	36	0.61	5.06	1.03	22.5	2.98	0.04	
BLK	Blank	<0.01	<0.01	<0.01	<0.1	<2	<0.1	<0.1	<1	<0.01	<0.1	<0.1	<0.1	<0.2	<0.1	<0.5	<0.01	<0.02	<0.02	<1	<0.01	<0.001
BLK	Blank	<0.01	<0.01	<0.01	<0.1	<2	0.2	<0.1	<1	<0.01	<0.1	<0.1	<0.1	<0.2	<0.1	<0.5	<0.01	<0.02	<0.02	<1	<0.01	<0.001



Bureau Veritas Commodities Canada Ltd.  
9050 Shaughnessy St Vancouver British Columbia V6P 6E5 Canada  
PHONE (604) 253-3158

**Client: Eagle Peak Resources Inc.**  
910 - 475 W. Georgia St.  
Vancouver British Columbia V6B 4M9 Canada

Project: Miracle  
Report Date: September 03, 2019

Page: 1 of 1

Part: 2 of 2

# QUALITY CONTROL REPORT

VAN19002023.1

Method	Analyte	AQ251	AQ251	AQ251	AQ251	AQ251	AQ251	AQ251	AQ251	AQ251	AQ251	AQ251	AQ251	AQ251	AQ251	AQ251	AQ251	AQ251
		La	Cr	Mg	Ba	Ti	B	Al	Na	K	W	Sc	Tl	S	Hg	Se	Te	Ga
Unit		ppm	ppm	%	ppm	%	ppm	%	%	%	ppm	ppm	ppm	%	ppb	ppm	ppm	ppm
MDL		0.5	0.5	0.01	0.5	0.001	1	0.01	0.001	0.01	0.1	0.1	0.02	0.02	5	0.1	0.02	0.1
Pulp Duplicates																		
3510	Soil	8.9	138.6	1.30	168.9	0.095	4	1.87	0.014	0.27	0.2	6.7	0.14	<0.02	45	0.2	0.09	5.9
REP 3510	QC	8.8	140.5	1.29	164.5	0.093	3	1.87	0.013	0.26	0.2	7.1	0.11	<0.02	37	0.4	0.06	5.3
3544	Soil	11.8	122.5	1.91	429.8	0.109	3	1.88	0.014	0.30	0.2	11.3	0.16	0.04	62	0.3	0.04	5.5
REP 3544	QC	11.7	122.8	1.92	440.5	0.110	3	1.87	0.015	0.30	0.2	11.7	0.16	0.04	55	0.2	0.06	5.3
Reference Materials																		
STD DS11	Standard	18.2	59.5	0.85	389.5	0.092	6	1.20	0.077	0.41	2.9	3.6	5.11	0.28	275	2.3	4.93	4.7
STD DS11	Standard	18.3	57.0	0.85	370.9	0.093	8	1.19	0.072	0.40	2.6	3.3	4.76	0.28	264	2.1	4.47	5.4
STD OREAS262	Standard	17.3	44.9	1.17	256.4	0.003	3	1.37	0.069	0.32	0.2	3.4	0.51	0.26	196	0.2	0.23	3.9
STD OREAS262	Standard	17.1	40.4	1.13	259.7	0.003	4	1.31	0.069	0.34	0.2	3.1	0.45	0.25	163	0.4	0.23	4.0
STD DS11 Expected		18.6	61.5	0.85	385	0.0976		1.1795	0.0762	0.4	2.9	3.4	4.9	0.2835	260	2.2	4.56	5.1
STD OREAS262 Expected		15.9	41.7	1.17	248	0.0027	4	1.3	0.071	0.312	0.2	3.24	0.47	0.253	170	0.4	0.23	3.73
BLK	Blank	<0.5	<0.5	<0.01	<0.5	<0.001	<1	<0.01	<0.001	<0.01	<0.1	<0.1	<0.02	<0.02	<5	<0.1	0.02	0.3
BLK	Blank	<0.5	<0.5	<0.01	<0.5	<0.001	<1	<0.01	<0.001	<0.01	<0.1	<0.1	<0.02	<0.02	<5	<0.1	<0.02	<0.1



**BUREAU VERITAS** MINERAL LABORATORIES  
Canada

[www.bureauveritas.com/um](http://www.bureauveritas.com/um)

Bureau Veritas Commodities Canada Ltd.  
9050 Shaughnessy St Vancouver British Columbia V6P 6E5 Canada  
PHONE (604) 253-3158

**Client:** **Eagle Peak Resources Inc.**  
910 - 475 W. Georgia St.  
Vancouver British Columbia V6B 4M9 Canada

Submitted By: Lloyd Tattersall  
Receiving Lab: Canada-Vancouver  
Received: July 30, 2019  
Report Date: August 31, 2019  
Page: 1 of 2

# CERTIFICATE OF ANALYSIS

VAN19002024.1

## CLIENT JOB INFORMATION

Project: Miracle  
Shipment ID:  
P.O. Number  
Number of Samples: 7

## SAMPLE DISPOSAL

DISP-PLP Dispose of Pulp After 90 days  
DISP-RJT Dispose of Reject After 60 days

Bureau Veritas does not accept responsibility for samples left at the laboratory after 90 days without prior written instructions for sample storage or return.

Invoice To: Eagle Peak Resources Inc.  
910 - 475 W. Georgia St.  
Vancouver British Columbia V6B 4M9  
Canada

CC: Peter Fox

## SAMPLE PREPARATION AND ANALYTICAL PROCEDURES

Procedure Code	Number of Samples	Code Description	Test Wgt (g)	Report Status	Lab
PRP70-250	7	Crush, split and pulverize 250 g rock to 200 mesh			VAN
AQ250	4	1:1:1 Aqua Regia digestion Ultratrace ICP-MS analysis	0.5	Completed	VAN
AQ251	2	1:1:1 Aqua Regia digestion Ultratrace ICP-MS analysis	15	Completed	VAN
LF202	1	Total Whole Rock Characterization with AQ200	0.2	Completed	VAN

## ADDITIONAL COMMENTS

  
JEFFREY CANNON  
Geochemistry Department Supervisor

This report supersedes all previous preliminary and final reports with this file number dated prior to the date on this certificate. Signature indicates final approval; preliminary reports are unsigned and should be used for reference only. All results are considered the confidential property of the client. Bureau Veritas assumes the liabilities for actual cost of analysis only. Results apply to samples as submitted.  
\*\*\* asterisk indicates that an analytical result could not be provided due to unusually high levels of interference from other elements.



**BUREAU VERITAS** MINERAL LABORATORIES  
Canada

[www.bureauveritas.com/um](http://www.bureauveritas.com/um)

Bureau Veritas Commodities Canada Ltd.

9050 Shaughnessy St Vancouver British Columbia V6P 6E5 Canada

PHONE (604) 253-3158

**Client:** **Eagle Peak Resources Inc.**  
910 - 475 W. Georgia St.  
Vancouver British Columbia V6B 4M9 Canada

Project: Miracle  
Report Date: August 31, 2019

Page: 2 of 2

Part: 1 of 7

# CERTIFICATE OF ANALYSIS

**VAN19002024.1**

Method	WGHT	AQ250	AQ250	AQ250	AQ250	AQ250	AQ250	AQ250	AQ250	AQ250	AQ250	AQ250	AQ250	AQ250	AQ250	AQ250	AQ250	AQ250	AQ250	AQ250	AQ250
Analyte	Wgt	Mo	Cu	Pb	Zn	Ag	Ni	Co	Mn	Fe	As	U	Au	Th	Sr	Cd	Sb	Bi	V	Ca	
Unit	kg	ppm	ppm	ppm	ppm	ppb	ppm	ppm	ppm	%	ppm	ppm	ppb	ppm	ppm	ppm	ppm	ppm	ppm	%	
MDL	0.01	0.01	0.01	0.01	0.1	2	0.1	0.1	1	0.01	0.1	0.1	0.2	0.1	0.5	0.01	0.02	0.02	1	0.01	
3497	Rock	0.51	2.71	241.55	9.76	55.6	109	13.7	16.7	949	4.66	32.6	0.3	1.0	0.9	345.5	0.15	0.14	0.12	83	3.56
3498	Rock	0.47	1.90	14.81	9.63	17.8	58	3.0	1.7	169	0.97	11.9	0.7	19.3	2.4	47.7	0.07	0.19	0.34	3	1.23
3499	Rock	0.40	0.88	136.11	2.39	87.0	148	19.8	26.8	1042	5.55	5.0	0.4	2.3	1.2	98.5	0.12	0.06	0.07	166	2.02
3500	Rock	0.37	5.02	119.39	0.67	66.9	46	158.4	26.0	491	3.57	9.4	0.7	<0.2	0.4	51.8	0.04	0.05	0.03	68	1.38
3535	Rock	0.21																			
3545	Rock	0.63																			
3546	Rock	0.36																			



**BUREAU VERITAS** MINERAL LABORATORIES  
Canada

www.bureauveritas.com/um

Bureau Veritas Commodities Canada Ltd.

9050 Shaughnessy St Vancouver British Columbia V6P 6E5 Canada

PHONE (604) 253-3158

**Client:** **Eagle Peak Resources Inc.**  
910 - 475 W. Georgia St.  
Vancouver British Columbia V6B 4M9 Canada

Project: Miracle  
Report Date: August 31, 2019

Page: 2 of 2

Part: 2 of 7

# CERTIFICATE OF ANALYSIS

VAN19002024.1

Method	AQ250	AQ250	AQ250	AQ250	AQ250	AQ250	AQ250	AQ250	AQ250	AQ250	AQ250	AQ250	AQ250	AQ250	AQ250	AQ250	AQ250	AQ250	AQ250	AQ251	AQ251		
Analyte	P	La	Cr	Mg	Ba	Ti	B	Al	Na	K	W	Sc	Tl	S	Hg	Se	Te	Ga	Mo	Cu			
Unit	%	ppm	ppm	%	ppm	%	ppm	%	%	%	ppm	ppm	ppm	%	ppb	ppm	ppm	ppm	ppm	ppm			
MDL	0.001	0.5	0.5	0.01	0.5	0.001	20	0.01	0.001	0.01	0.1	0.1	0.02	0.02	5	0.1	0.02	0.1	0.01	0.01			
3497	Rock	0.340	6.9	0.9	0.59	139.5	0.002	<20	0.89	0.014	0.46	<0.1	5.1	0.06	0.04	18	<0.1	0.03	1.7				
3498	Rock	0.011	6.2	2.3	0.33	955.3	<0.001	<20	0.44	0.008	0.16	<0.1	1.1	0.04	0.09	<5	<0.1	0.22	1.0				
3499	Rock	0.197	9.4	31.1	2.33	320.2	0.205	<20	3.03	0.067	1.64	<0.1	8.2	0.19	0.61	13	0.7	0.08	10.1				
3500	Rock	0.129	2.7	138.9	3.00	129.5	0.182	<20	2.68	0.050	0.05	0.3	2.5	0.02	<0.02	<5	<0.1	0.06	4.6				
3535	Rock																				0.32	6.33	
3545	Rock																					0.28	1.66
3546	Rock																						



**BUREAU VERITAS** MINERAL LABORATORIES  
Canada

[www.bureauveritas.com/um](http://www.bureauveritas.com/um)

Bureau Veritas Commodities Canada Ltd.

9050 Shaughnessy St Vancouver British Columbia V6P 6E5 Canada

PHONE (604) 253-3158

**Client:** **Eagle Peak Resources Inc.**  
910 - 475 W. Georgia St.  
Vancouver British Columbia V6B 4M9 Canada

Project: Miracle  
Report Date: August 31, 2019

Page: 2 of 2

Part: 3 of 7

# CERTIFICATE OF ANALYSIS

**VAN19002024.1**

Method	AQ251																				
	Pb	Zn	Ag	Ni	Co	Mn	Fe	As	U	Au	Th	Sr	Cd	Sb	Bi	V	Ca	P	La	Cr	
Analyte	ppm	ppm	ppb	ppm	ppm	ppm	%	ppm	ppm	ppb	ppm	ppm	ppm	ppm	ppm	ppm	%	%	ppm	ppm	
Unit	ppm	ppm	ppb	ppm	ppm	ppm	%	ppm	ppm	ppb	ppm	ppm	ppm	ppm	ppm	ppm	%	%	ppm	ppm	
MDL	0.01	0.1	2	0.1	0.1	1	0.01	0.1	0.1	0.2	0.1	0.5	0.01	0.02	0.02	1	0.01	0.001	0.5	0.5	
3497	Rock																				
3498	Rock																				
3499	Rock																				
3500	Rock																				
3535	Rock	0.84	85.8	17	175.7	31.1	941	4.37	0.9	0.2	1.0	0.7	60.8	0.06	0.08	<0.02	169	0.97	0.185	3.8	296.2
3545	Rock	16.82	23.1	32	1.4	1.1	136	0.79	18.2	0.5	6.4	1.7	15.9	0.04	0.08	0.05	2	0.66	0.004	4.2	2.6
3546	Rock																				



**BUREAU VERITAS** MINERAL LABORATORIES  
Canada

[www.bureauveritas.com/um](http://www.bureauveritas.com/um)

Bureau Veritas Commodities Canada Ltd.

9050 Shaughnessy St Vancouver British Columbia V6P 6E5 Canada

PHONE (604) 253-3158

**Client:** **Eagle Peak Resources Inc.**  
910 - 475 W. Georgia St.  
Vancouver British Columbia V6B 4M9 Canada

Project: Miracle  
Report Date: August 31, 2019

Page: 2 of 2

Part: 4 of 7

# CERTIFICATE OF ANALYSIS

VAN19002024.1

Method	AQ251	AQ251	AQ251	AQ251	AQ251	AQ251	AQ251	AQ251	AQ251	AQ251	AQ251	AQ251	AQ251	AQ251	AQ251	AQ251	LF200	LF200	LF200	LF200	LF200
	Mg	Ba	Ti	B	Al	Na	K	W	Sc	Tl	S	Hg	Se	Te	Ga	SiO2	Al2O3	Fe2O3	MgO	CaO	
Analyte	%	ppm	%	ppm	%	%	%	ppm	ppm	ppm	%	ppb	ppm	ppm	ppm	%	%	%	%	%	
Unit																					
MDL	0.01	0.5	0.001	1	0.01	0.001	0.01	0.1	0.1	0.02	0.02	5	0.1	0.02	0.1	0.01	0.01	0.04	0.01	0.01	
3497	Rock																				
3498	Rock																				
3499	Rock																				
3500	Rock																				
3535	Rock	3.52	91.0	0.116	2	2.45	0.013	0.24	0.1	2.6	<0.02	0.14	16	<0.1	0.02	8.0					
3545	Rock	0.05	340.3	<0.001	<1	0.36	0.007	0.20	<0.1	0.7	0.03	0.06	16	<0.1	0.04	0.7					
3546	Rock																58.36	18.26	5.97	1.67	4.00



**BUREAU VERITAS** MINERAL LABORATORIES  
Canada

[www.bureauveritas.com/um](http://www.bureauveritas.com/um)

Bureau Veritas Commodities Canada Ltd.

9050 Shaughnessy St Vancouver British Columbia V6P 6E5 Canada

PHONE (604) 253-3158

**Client:** **Eagle Peak Resources Inc.**  
910 - 475 W. Georgia St.  
Vancouver British Columbia V6B 4M9 Canada

Project: Miracle  
Report Date: August 31, 2019

Page: 2 of 2

Part: 5 of 7

# CERTIFICATE OF ANALYSIS

VAN19002024.1

Method	LF200	LF200	LF200	LF200	LF200	LF200	LF200	LF200	LF200	LF200	LF200	LF200	LF200	LF200	LF200	LF200	LF200	LF200	LF200	LF200	
Analyte	Na2O	K2O	TiO2	P2O5	MnO	Cr2O3	Ba	Ni	Sc	LOI	Sum	Be	Co	Cs	Ga	Hf	Nb	Rb	Sn	Sr	
Unit	%	%	%	%	%	%	ppm	ppm	ppm	%	%	ppm	ppm	ppm	ppm	ppm	ppm	ppm	ppm	ppm	
MDL	0.01	0.01	0.01	0.01	0.01	0.002	1	20	1	-5.1	0.01	1	0.2	0.1	0.5	0.1	0.1	0.1	1	0.5	
3497	Rock																				
3498	Rock																				
3499	Rock																				
3500	Rock																				
3535	Rock																				
3545	Rock																				
3546	Rock	5.29	3.84	0.49	0.29	0.07	<0.002	1375	<20	9	1.4	99.83	4	15.5	1.6	17.3	2.9	4.8	81.6	<1	605.0



**BUREAU VERITAS** MINERAL LABORATORIES  
Canada

[www.bureauveritas.com/um](http://www.bureauveritas.com/um)

Bureau Veritas Commodities Canada Ltd.

9050 Shaughnessy St Vancouver British Columbia V6P 6E5 Canada

PHONE (604) 253-3158

**Client:** **Eagle Peak Resources Inc.**  
910 - 475 W. Georgia St.  
Vancouver British Columbia V6B 4M9 Canada

Project: Miracle  
Report Date: August 31, 2019

Page: 2 of 2

Part: 6 of 7

# CERTIFICATE OF ANALYSIS

VAN19002024.1

Method	LF200	LF200	LF200	LF200	LF200	LF200	LF200	LF200	LF200	LF200	LF200	LF200	LF200	LF200	LF200	LF200	LF200	LF200	LF200	LF200	
Analyte	Ta	Th	U	V	W	Zr	Y	La	Ce	Pr	Nd	Sm	Eu	Gd	Tb	Dy	Ho	Er	Tm	Yb	
Unit	ppm	ppm	ppm	ppm	ppm	ppm	ppm	ppm	ppm	ppm	ppm	ppm	ppm	ppm	ppm	ppm	ppm	ppm	ppm	ppm	
MDL	0.1	0.2	0.1	8	0.5	0.1	0.1	0.1	0.1	0.02	0.3	0.05	0.02	0.05	0.01	0.05	0.02	0.03	0.01	0.05	
3497	Rock																				
3498	Rock																				
3499	Rock																				
3500	Rock																				
3535	Rock																				
3545	Rock																				
3546	Rock	0.3	2.5	1.3	117	0.8	103.7	17.3	17.1	34.0	4.21	17.2	3.70	1.07	3.54	0.52	3.04	0.64	1.85	0.28	1.81



**BUREAU VERITAS** MINERAL LABORATORIES  
Canada

[www.bureauveritas.com/um](http://www.bureauveritas.com/um)

Bureau Veritas Commodities Canada Ltd.

9050 Shaughnessy St Vancouver British Columbia V6P 6E5 Canada

PHONE (604) 253-3158

**Client:** **Eagle Peak Resources Inc.**  
910 - 475 W. Georgia St.  
Vancouver British Columbia V6B 4M9 Canada

Project: Miracle  
Report Date: August 31, 2019

Page: 2 of 2

Part: 7 of 7

# CERTIFICATE OF ANALYSIS

VAN19002024.1

Method	LF200	TC000	TC000	AQ200	AQ200	AQ200	AQ200	AQ200	AQ200	AQ200	AQ200	AQ200	AQ200	AQ200	AQ200	AQ200	AQ200	
Analyte	Lu	TOT/C	TOT/S	Mo	Cu	Pb	Zn	Ni	As	Cd	Sb	Bi	Ag	Au	Hg	Tl	Se	
Unit	ppm	%	%	ppm	ppm	ppm	ppm	ppm	ppm	ppm	ppm	ppm	ppm	ppb	ppm	ppm	ppm	
MDL	0.01	0.02	0.02	0.1	0.1	0.1	1	0.1	0.5	0.1	0.1	0.1	0.1	0.5	0.01	0.1	0.5	
3497	Rock																	
3498	Rock																	
3499	Rock																	
3500	Rock																	
3535	Rock																	
3545	Rock																	
3546	Rock	0.30	<0.02	0.03	0.4	153.6	5.7	37	2.0	8.3	0.1	0.2	<0.1	<0.1	24.1	<0.01	<0.1	<0.5



Bureau Veritas Commodities Canada Ltd.  
9050 Shaughnessy St Vancouver British Columbia V6P 6E5 Canada  
PHONE (604) 253-3158

**Client:** Eagle Peak Resources Inc.  
910 - 475 W. Georgia St.  
Vancouver British Columbia V6B 4M9 Canada

**Project:** Miracle  
**Report Date:** August 31, 2019

Page: 1 of 1

Part: 1 of 7

# QUALITY CONTROL REPORT

VAN19002024.1

Method	WGHT	AQ250	AQ250	AQ250	AQ250	AQ250	AQ250	AQ250	AQ250	AQ250	AQ250	AQ250	AQ250	AQ250	AQ250	AQ250	AQ250	AQ250	AQ250	AQ250	AQ250
Analyte	Wgt	Mo	Cu	Pb	Zn	Ag	Ni	Co	Mn	Fe	As	U	Au	Th	Sr	Cd	Sb	Bi	V	Ca	
Unit	kg	ppm	ppm	ppm	ppm	ppb	ppm	ppm	ppm	%	ppm	ppm	ppb	ppm	ppm	ppm	ppm	ppm	ppm	%	
MDL	0.01	0.01	0.01	0.01	0.1	2	0.1	0.1	1	0.01	0.1	0.1	0.2	0.1	0.5	0.01	0.02	0.02	1	0.01	
Pulp Duplicates																					
3497	Rock	0.51	2.71	241.55	9.76	55.6	109	13.7	16.7	949	4.66	32.6	0.3	1.0	0.9	345.5	0.15	0.14	0.12	83	3.56
REP 3497	QC		2.73	251.10	9.80	59.2	105	14.0	16.6	993	4.57	33.4	0.3	0.9	0.9	349.2	0.14	0.14	0.12	83	3.47
Reference Materials																					
STD DS11	Standard		14.48	150.02	130.13	355.8	1745	80.4	13.6	1026	3.21	44.2	2.5	51.2	7.6	67.9	2.36	6.22	11.57	50	1.10
STD DS11	Standard																				
STD GS311-1	Standard																				
STD GS910-4	Standard																				
STD OREAS262	Standard																				
STD OREAS262	Standard		0.65	117.22	54.94	152.6	469	65.4	27.5	558	3.34	36.8	1.2	56.3	8.9	35.2	0.61	2.54	0.97	22	3.00
STD OREAS262	Standard																				
STD SO-19	Standard																				
STD SO-19	Standard																				
STD GS311-1 Expected																					
STD GS910-4 Expected																					
STD SO-19 Expected																					
STD DS11 Expected			13.9	149	138	345	1710	77.7	14.2	1055	3.1	42.8	2.59	79	7.65	67.3	2.37	7.2	12.2	50	1.063
STD OREAS262 Expected			0.68	118	56	154	450	62	26.9	530	3.284	35.8	1.22	65	9.33	36	0.61	3.39	1.03	22.5	2.98
BLK	Blank																				
BLK	Blank																				
BLK	Blank																				
BLK	Blank		<0.01	0.02	0.02	<0.1	<2	<0.1	<0.1	<1	<0.01	0.2	<0.1	<0.2	<0.1	<0.5	<0.01	<0.02	<0.02	<1	<0.01
BLK	Blank																				
Prep Wash																					
ROCK-VAN	Prep Blank		0.86	2.33	1.25	31.3	11	1.1	3.7	490	1.84	0.7	0.5	<0.2	2.2	25.4	0.03	0.08	<0.02	26	0.67



Bureau Veritas Commodities Canada Ltd.  
9050 Shaughnessy St Vancouver British Columbia V6P 6E5 Canada  
PHONE (604) 253-3158

**Client: Eagle Peak Resources Inc.**  
910 - 475 W. Georgia St.  
Vancouver British Columbia V6B 4M9 Canada

Project: Miracle  
Report Date: August 31, 2019

Page: 1 of 1

Part: 2 of 7

# QUALITY CONTROL REPORT

VAN19002024.1

Method		AQ250	AQ250	AQ250	AQ250	AQ250	AQ250	AQ250	AQ250	AQ250	AQ250	AQ250	AQ250	AQ250	AQ250	AQ250	AQ250	AQ250	AQ250	AQ250	AQ250	
Analyte		P	La	Cr	Mg	Ba	Ti	B	Al	Na	K	W	Sc	Tl	S	Hg	Se	Te	Ga	Mo	Cu	
Unit		%	ppm	ppm	%	ppm	%	ppm	%	%	%	ppm	ppm	ppm	%	ppb	ppm	ppm	ppm	ppm	ppm	
MDL		0.001	0.5	0.5	0.01	0.5	0.001	20	0.01	0.001	0.01	0.1	0.1	0.02	0.02	5	0.1	0.02	0.1	0.01	0.01	
Pulp Duplicates																						
3497	Rock	0.340	6.9	0.9	0.59	139.5	0.002	<20	0.89	0.014	0.46	<0.1	5.1	0.06	0.04	18	<0.1	0.03	1.7			
REP 3497	QC	0.332	7.1	0.9	0.58	141.1	0.002	<20	0.88	0.009	0.46	<0.1	4.9	0.05	0.04	12	<0.1	0.04	1.8			
Reference Materials																						
STD DS11	Standard																					
STD DS11	Standard	0.073	18.3	60.1	0.86	417.3	0.093	<20	1.23	0.078	0.41	2.7	3.1	4.94	0.28	267	2.2	4.82	5.1			
STD DS11	Standard																			14.29	143.87	
STD GS311-1	Standard																					
STD GS910-4	Standard																					
STD OREAS262	Standard																					
STD OREAS262	Standard	0.039	16.0	42.9	1.19	239.3	0.003	<20	1.35	0.072	0.32	0.1	3.1	0.45	0.25	165	0.5	0.21	4.1			
STD OREAS262	Standard																			0.63	116.30	
STD SO-19	Standard																					
STD SO-19	Standard																					
STD GS311-1 Expected																						
STD GS910-4 Expected																						
STD SO-19 Expected																						
STD DS11 Expected		0.0701	18.6	61.5	0.85	417	0.0976		1.129	0.0694	0.4	2.9	3.1	4.9	0.2835	260	2.2	4.56	4.7	14.6	149	
STD OREAS262 Expected		0.04	15.9	41.7	1.17	248	0.003		1.204	0.071	0.312	0.13	3.24	0.47	0.253	170	0.4	0.23	3.73	0.68	118	
BLK	Blank																					
BLK	Blank																					
BLK	Blank																					
BLK	Blank	<0.001	<0.5	<0.5	<0.01	<0.5	<0.001	<20	<0.01	<0.001	<0.01	<0.1	<0.1	<0.02	<0.02	<5	<0.1	<0.02	<0.1			
BLK	Blank																			<0.01	<0.01	
Prep Wash																						
ROCK-VAN	Prep Blank	0.039	6.7	3.3	0.47	56.9	0.083	<20	0.93	0.090	0.10	<0.1	2.9	<0.02	<0.02	<5	<0.1	<0.02	3.5	0.86	2.75	



Bureau Veritas Commodities Canada Ltd.  
9050 Shaughnessy St Vancouver British Columbia V6P 6E5 Canada  
PHONE (604) 253-3158

**Client:** Eagle Peak Resources Inc.  
910 - 475 W. Georgia St.  
Vancouver British Columbia V6B 4M9 Canada

Project: Miracle  
Report Date: August 31, 2019

Page: 1 of 1

Part: 3 of 7

# QUALITY CONTROL REPORT

VAN19002024.1

Method	AQ251	AQ251	AQ251	AQ251	AQ251	AQ251	AQ251	AQ251	AQ251	AQ251	AQ251	AQ251	AQ251	AQ251	AQ251	AQ251	AQ251	AQ251	AQ251	AQ251	
Analyte	Pb	Zn	Ag	Ni	Co	Mn	Fe	As	U	Au	Th	Sr	Cd	Sb	Bi	V	Ca	P	La	Cr	
Unit	ppm	ppm	ppb	ppm	ppm	ppm	%	ppm	ppm	ppb	ppm	ppm	ppm	ppm	ppm	ppm	%	%	ppm	ppm	
MDL	0.01	0.1	2	0.1	0.1	1	0.01	0.1	0.1	0.2	0.1	0.5	0.01	0.02	0.02	1	0.01	0.001	0.5	0.5	
Pulp Duplicates																					
3497 Rock																					
REP 3497 QC																					
Reference Materials																					
STD DS11 Standard																					
STD DS11 Standard																					
STD DS11 Standard	135.11	340.2	1734	78.0	12.9	1010	2.99	42.6	2.5	116.8	7.8	64.6	2.44	8.56	11.81	48	1.03	0.069	18.2	58.0	
STD GS311-1 Standard																					
STD GS910-4 Standard																					
STD OREAS262 Standard																					
STD OREAS262 Standard																					
STD OREAS262 Standard	53.89	143.7	456	61.9	25.7	516	3.12	35.0	1.2	81.3	8.8	33.9	0.67	4.62	1.02	21	2.88	0.040	14.8	40.2	
STD SO-19 Standard																					
STD SO-19 Standard																					
STD GS311-1 Expected																					
STD GS910-4 Expected																					
STD SO-19 Expected																					
STD DS11 Expected	138	345	1710	77.7	14.2	1055	3.1	42.8	2.59	79	7.65	67.3	2.37	8.74	12.2	50	1.063	0.0701	18.6	61.5	
STD OREAS262 Expected	56	154	450	62	26.9	530	3.284	35.8	1.22	65	9.33	36	0.61	5.06	1.03	22.5	2.98	0.04	15.9	41.7	
BLK Blank																					
BLK Blank																					
BLK Blank																					
BLK Blank																					
BLK Blank	<0.01	<0.1	<2	<0.1	<0.1	<1	<0.01	<0.1	<0.1	<0.2	<0.1	<0.5	<0.01	<0.02	<0.02	<1	<0.01	<0.001	<0.5	<0.5	
Prep Wash																					
ROCK-VAN Prep Blank	1.16	34.2	8	1.0	3.7	500	1.79	3.9	0.4	3.7	2.0	21.6	0.03	0.11	<0.02	25	0.62	0.041	6.1	3.6	



# QUALITY CONTROL REPORT

VAN19002024.1

Method	AQ251	AQ251	AQ251	AQ251	AQ251	AQ251	AQ251	AQ251	AQ251	AQ251	AQ251	AQ251	AQ251	AQ251	AQ251	LF200	LF200	LF200	LF200	LF200	
Analyte	Mg	Ba	Ti	B	Al	Na	K	W	Sc	Tl	S	Hg	Se	Te	Ga	SiO2	Al2O3	Fe2O3	MgO	CaO	
Unit	%	ppm	%	ppm	%	%	%	ppm	ppm	ppm	%	ppb	ppm	ppm	ppm	%	%	%	%	%	
MDL	0.01	0.5	0.001	1	0.01	0.001	0.01	0.1	0.1	0.02	0.02	5	0.1	0.02	0.1	0.01	0.01	0.04	0.01	0.01	
Pulp Duplicates																					
3497	Rock																				
REP 3497	QC																				
Reference Materials																					
STD DS11	Standard																				
STD DS11	Standard																				
STD DS11	Standard	0.82	366.0	0.087	8	1.14	0.074	0.39	2.9	3.3	4.83	0.26	237	2.1	4.67	4.8					
STD GS311-1	Standard																				
STD GS910-4	Standard																				
STD OREAS262	Standard																				
STD OREAS262	Standard																				
STD OREAS262	Standard	1.14	226.3	0.003	3	1.27	0.071	0.30	0.2	3.1	0.42	0.25	147	0.4	0.24	3.7					
STD SO-19	Standard															60.27	14.07	7.54	2.93	5.98	
STD SO-19	Standard															60.55	13.94	7.51	2.91	5.92	
STD GS311-1 Expected																					
STD GS910-4 Expected																					
STD SO-19 Expected																61.13	13.95	7.47	2.88	6	
STD DS11 Expected		0.85	385	0.0976		1.1795	0.0762	0.4	2.9	3.4	4.9	0.2835	260	2.2	4.56	5.1					
STD OREAS262 Expected		1.17	248	0.0027	4	1.3	0.071	0.312	0.2	3.24	0.47	0.253	170	0.4	0.23	3.73					
BLK	Blank																				
BLK	Blank															0.02	<0.01	<0.04	<0.01	<0.01	
BLK	Blank																				
BLK	Blank																				
BLK	Blank	<0.01	<0.5	<0.001	<1	<0.01	<0.001	<0.01	<0.1	<0.1	<0.02	<0.02	<5	<0.1	<0.02	<0.1					
Prep Wash																					
ROCK-VAN	Prep Blank	0.47	50.6	0.071	<1	0.93	0.115	0.10	0.1	2.8	<0.02	<0.02	<5	<0.1	<0.02	3.4	71.05	14.13	3.05	0.90	2.31



Bureau Veritas Commodities Canada Ltd.  
9050 Shaughnessy St Vancouver British Columbia V6P 6E5 Canada  
PHONE (604) 253-3158

**Client:** Eagle Peak Resources Inc.  
910 - 475 W. Georgia St.  
Vancouver British Columbia V6B 4M9 Canada

Project: Miracle  
Report Date: August 31, 2019

Page: 1 of 1

Part: 5 of 7

# QUALITY CONTROL REPORT

VAN19002024.1

Method	LF200	LF200	LF200	LF200	LF200	LF200	LF200	LF200	LF200	LF200	LF200	LF200	LF200	LF200	LF200	LF200	LF200	LF200	LF200	LF200	LF200	
Analyte	Na2O	K2O	TiO2	P2O5	MnO	Cr2O3	Ba	Ni	Sc	LOI	Sum	Be	Co	Cs	Ga	Hf	Nb	Rb	Sn	Sr		
Unit	%	%	%	%	%	%	ppm	ppm	ppm	%	%	ppm	ppm	ppm	ppm	ppm	ppm	ppm	ppm	ppm		
MDL	0.01	0.01	0.01	0.01	0.01	0.002	1	20	1	-5.1	0.01	1	0.2	0.1	0.5	0.1	0.1	0.1	0.1	1	0.5	
Pulp Duplicates																						
3497	Rock																					
REP 3497	QC																					
Reference Materials																						
STD DS11	Standard																					
STD DS11	Standard																					
STD DS11	Standard																					
STD GS311-1	Standard																					
STD GS910-4	Standard																					
STD OREAS262	Standard																					
STD OREAS262	Standard																					
STD OREAS262	Standard																					
STD SO-19	Standard	3.98	1.28	0.72	0.32	0.13	0.499	487	466	27	1.9	99.78	16	24.9	4.7	17.0	3.3	71.9	20.5	20	326.3	
STD SO-19	Standard	3.96	1.28	0.70	0.33	0.13	0.491	472	464	26	1.9	99.78	23	22.8	4.5	16.4	3.2	71.2	20.0	19	324.9	
STD GS311-1 Expected																						
STD GS910-4 Expected																						
STD SO-19 Expected		4.11	1.29	0.69	0.32	0.13	0.5	486	470	27			20	24	4.5	17.5	3.1	68.5	19.5	19	317.1	
STD DS11 Expected																						
STD OREAS262 Expected																						
BLK	Blank																					
BLK	Blank	<0.01	<0.01	<0.01	<0.01	<0.01	<0.002	<1	<20	<1	0.0	<0.01	<1	<0.2	<0.1	<0.5	<0.1	0.4	<0.1	<1	<0.5	
BLK	Blank																					
BLK	Blank																					
BLK	Blank																					
Prep Wash																						
ROCK-VAN	Prep Blank	4.54	1.95	0.36	0.09	0.08	<0.002	793	<20	7	1.4	99.92	<1	3.8	0.4	12.3	3.4	5.8	34.3	<1	211.7	



Bureau Veritas Commodities Canada Ltd.  
9050 Shaughnessy St Vancouver British Columbia V6P 6E5 Canada  
PHONE (604) 253-3158

**Client:** Eagle Peak Resources Inc.  
910 - 475 W. Georgia St.  
Vancouver British Columbia V6B 4M9 Canada

Project: Miracle  
Report Date: August 31, 2019

Page: 1 of 1

Part: 6 of 7

# QUALITY CONTROL REPORT

VAN19002024.1

Method	LF200	LF200	LF200	LF200	LF200	LF200	LF200	LF200	LF200	LF200	LF200	LF200	LF200	LF200	LF200	LF200	LF200	LF200	LF200	LF200	
Analyte	Ta	Th	U	V	W	Zr	Y	La	Ce	Pr	Nd	Sm	Eu	Gd	Tb	Dy	Ho	Er	Tm	Yb	
Unit	ppm	ppm	ppm	ppm	ppm	ppm	ppm	ppm	ppm	ppm	ppm	ppm	ppm	ppm	ppm	ppm	ppm	ppm	ppm	ppm	
MDL	0.1	0.2	0.1	8	0.5	0.1	0.1	0.1	0.1	0.02	0.3	0.05	0.02	0.05	0.01	0.05	0.02	0.03	0.01	0.05	
Pulp Duplicates																					
3497 Rock																					
REP 3497 QC																					
Reference Materials																					
STD DS11 Standard																					
STD DS11 Standard																					
STD DS11 Standard																					
STD GS311-1 Standard																					
STD GS910-4 Standard																					
STD OREAS262 Standard																					
STD OREAS262 Standard																					
STD OREAS262 Standard																					
STD SO-19 Standard	5.6	13.9	20.4	165	9.2	122.1	37.2	78.9	168.1	20.25	77.9	13.58	3.78	11.14	1.44	7.95	1.41	4.06	0.55	3.66	
STD SO-19 Standard	5.0	13.6	20.0	164	9.4	111.8	36.2	74.8	162.4	19.42	75.3	13.17	3.63	10.26	1.35	7.40	1.35	3.86	0.54	3.35	
STD GS311-1 Expected																					
STD GS910-4 Expected																					
STD SO-19 Expected	4.9	13	19.4	165	9.8	112	35.5	71.3	161	19.4	75.7	13.7	3.81	10.53	1.41	7.5	1.39	3.78	0.55	3.55	
STD DS11 Expected																					
STD OREAS262 Expected																					
BLK Blank																					
BLK Blank	0.1	<0.2	<0.1	<8	<0.5	0.6	<0.1	<0.1	<0.1	<0.02	<0.3	<0.05	<0.02	<0.05	<0.01	<0.05	<0.02	<0.03	<0.01	<0.05	
BLK Blank																					
BLK Blank																					
BLK Blank																					
Prep Wash																					
ROCK-VAN Prep Blank	0.5	3.0	1.5	38	<0.5	143.7	17.9	15.7	27.1	3.24	12.3	2.51	0.78	2.85	0.45	3.00	0.64	2.02	0.32	2.21	



Bureau Veritas Commodities Canada Ltd.  
9050 Shaughnessy St Vancouver British Columbia V6P 6E5 Canada  
PHONE (604) 253-3158

**Client:** Eagle Peak Resources Inc.  
910 - 475 W. Georgia St.  
Vancouver British Columbia V6B 4M9 Canada

**Project:** Miracle  
**Report Date:** August 31, 2019

**Page:** 1 of 1

**Part:** 7 of 7

# QUALITY CONTROL REPORT

VAN19002024.1

Method	LF200	TC000	TC000	AQ200	AQ200	AQ200	AQ200	AQ200	AQ200	AQ200	AQ200	AQ200	AQ200	AQ200	AQ200	AQ200	AQ200	AQ200
Analyte	Lu	TOT/C	TOT/S	Mo	Cu	Pb	Zn	Ni	As	Cd	Sb	Bi	Ag	Au	Hg	Tl	Se	
Unit	ppm	%	%	ppm	ppm	ppm	ppm	ppm	ppm	ppm	ppm	ppm	ppm	ppb	ppm	ppm	ppm	
MDL	0.01	0.02	0.02	0.1	0.1	0.1	1	0.1	0.5	0.1	0.1	0.1	0.1	0.5	0.01	0.1	0.5	
Pulp Duplicates																		
3497	Rock																	
REP 3497	QC																	
Reference Materials																		
STD DS11	Standard			14.3	157.0	141.4	349	76.9	44.8	2.5	7.3	10.9	1.7	55.4	0.27	4.8	2.0	
STD DS11	Standard																	
STD DS11	Standard																	
STD GS311-1	Standard	0.98	2.42															
STD GS910-4	Standard	2.61	8.25															
STD OREAS262	Standard			0.5	117.1	55.1	151	62.3	36.5	0.5	3.0	1.0	0.5	65.3	0.17	0.5	<0.5	
STD OREAS262	Standard																	
STD OREAS262	Standard																	
STD SO-19	Standard	0.55																
STD SO-19	Standard	0.49																
STD GS311-1 Expected		1.02	2.35															
STD GS910-4 Expected		2.65	8.27															
STD SO-19 Expected		0.53																
STD DS11 Expected				13.9	149	138	345	77.7	42.8	2.37	7.2	12.2	1.71	79	0.26	4.9	2.2	
STD OREAS262 Expected				0.68	118	56	154	62	35.8	0.61	3.39	1.03	0.45	65	0.17	0.47	0.4	
BLK	Blank	<0.02	<0.02															
BLK	Blank	<0.01																
BLK	Blank			<0.1	<0.1	<0.1	<1	<0.1	<0.5	<0.1	<0.1	<0.1	<0.1	<0.5	<0.01	<0.1	<0.5	
BLK	Blank																	
BLK	Blank																	
Prep Wash																		
ROCK-VAN	Prep Blank	0.37	0.08	<0.02	1.0	3.0	1.4	35	0.9	0.9	<0.1	0.1	<0.1	<0.1	1.5	<0.01	<0.1	<0.5