

Ministry of Energy, Mines & Petroleum Resources
Mining & Minerals Division
BC Geological Survey

Assessment Report
Title Page and Summary

TYPE OF REPORT [type of survey(s)]: Geochemical

TOTAL COST: \$2875.19

AUTHOR(S): Helgi Sigurgeirson SIGNATURE(S): _____

NOTICE OF WORK PERMIT NUMBER(S)/DATE(S): _____ YEAR OF WORK: 2019

STATEMENT OF WORK - CASH PAYMENTS EVENT NUMBER(S)/DATE(S): EV#5771654

PROPERTY NAME: Jervis Inlet Cu-Zn

CLAIM NAME(S) (on which the work was done): 1066226

COMMODITIES SOUGHT: Cu, Zn, Ag

MINERAL INVENTORY MINFILE NUMBER(S), IF KNOWN: 092GNW017, 092GNW095, 092GNW096, 092GNW097 & 092GNW098

MINING DIVISION: Vancouver NTS/BCGS: 092G 081

LATITUDE: 49 ° 50 ' 30 " LONGITUDE: 123 ° 51 ' 30 " (at centre of work)

OWNER(S):
1) Saxifrage Geological Services Ltd. 2) _____

MAILING ADDRESS:
47312 Schooner Way
Pender Island, BC V0N 2M2

OPERATOR(S) [who paid for the work]:
1) Saxifrage Geological Services Ltd. 2) _____

MAILING ADDRESS:
47312 Schooner Way
Pender Island, BC V0N 2M2

PROPERTY GEOLOGY KEYWORDS (lithology, age, stratigraphy, structure, alteration, mineralization, size and attitude):
Rhyolite, basalt, argillite, Cretaceous, Gambier Group, epidote, chlorite, silica, pyrite, pyrhotite, chalcopyrite, sphalerite, magnetite, VMS

REFERENCES TO PREVIOUS ASSESSMENT WORK AND ASSESSMENT REPORT NUMBERS: 18346 & 23238

TYPE OF WORK IN THIS REPORT	EXTENT OF WORK (IN METRIC UNITS)	ON WHICH CLAIMS	PROJECT COSTS APPORTIONED (incl. support)
GEOLOGICAL (scale, area)			
Ground, mapping	_____	_____	_____
Photo interpretation	_____	_____	_____
GEOPHYSICAL (line-kilometres)			
Ground			
Magnetic	_____	_____	_____
Electromagnetic	_____	_____	_____
Induced Polarization	_____	_____	_____
Radiometric	_____	_____	_____
Seismic	_____	_____	_____
Other	_____	_____	_____
Airborne		_____	_____
GEOCHEMICAL (number of samples analysed for...)			
Soil	_____	_____	_____
Silt	_____	_____	_____
Rock	4	_____	\$2875.19
Other	_____	_____	_____
DRILLING (total metres; number of holes, size)			
Core	_____	_____	_____
Non-core	_____	_____	_____
RELATED TECHNICAL			
Sampling/assaying	_____	_____	_____
Petrographic	_____	_____	_____
Mineralographic	_____	_____	_____
Metallurgic	_____	_____	_____
PROSPECTING (scale, area)		_____	_____
PREPARATORY / PHYSICAL			
Line/grid (kilometres)	_____	_____	_____
Topographic/Photogrammetric (scale, area)	_____	_____	_____
Legal surveys (scale, area)	_____	_____	_____
Road, local access (kilometres)/trail	_____	_____	_____
Trench (metres)	_____	_____	_____
Underground dev. (metres)	_____	_____	_____
Other	_____	_____	_____
		TOTAL COST:	\$2875.19

Geochemical Assessment Report
on the
Jervis Inlet Cu-Zn Property

Egmont
British Columbia
Vancouver Mining Division

Map Sheet 092G 081

UTM 438 250 E, 5521 500 N (Zone 10)
N 49° 50.5' W 123° 51.5'

Claim 1066226

Prepared for:
Saxifrage Geological Services Ltd

Prepared by:
Helgi Sigurgeirson, P.Geol.
April 26, 2020

Table of Contents

Introduction	
Location, Access and Physiography	1
Property Definition	1
Previous Work	1
Work Program Summary	4
Regional Geology	5
Property Geology	5
Mineralization, Soil and Geophysical Anomalies	7
Rock Sampling	12
Conclusions	14
References	15
Statement of Qualifications	16
Cost Statement	17
Statement of Work	18

List of Figures

1. Location Map	2
2. Claim Map	3
3. Property Geology Map	6
4. Rock Sampling Map	8
5. Historical Cu in soil anomaly map	10
6. Historical Zn in soil anomaly map	11
7. TAS plot	13
8. Zr/Ti vs Nb/Y plot	13
9. La/Yb (cn) vs Yb (cn) rhyolite discriminant plot	14

List of Tables

1. Rock Sample Descriptions	12
-----------------------------------	----

Appendix I

1. Certificate of Analysis
2. QC Certificate

Introduction

Location, Access and Physiography

The Jervis Cu-Zn Property is about 80 km northwest of Vancouver, BC. It is accessed by boat from Egmont on the Sunshine Coast (Figure 1). It is 12.5 km by water taxi from Egmont to the dock at the gravel pit adjacent to the property. From the gravel pit, the property is accessed by quarry and logging roads (Figure 2). The property has cell phone reception. The property ranges in elevation from sea level along the Jervis Inlet to 1340 m at the east end of the property. Most of the property features moderate to steep slopes covered with dense second growth coniferous forest. The area features dry summers and wet winters. Snow can be expected from December to March. At lower elevations, snow is infrequent and the property can usually be worked year round.

Property Definition

The Jervis Cu-Zn Property consists of claim 1066226 (Figure 2). The claim covers 270.85 hectares and is owned by Saxifrage Geological Services Ltd.. A Statement of Work (5771654) for the work described in this report was filed on January 25, 2020. The claim is good till September 30, 2021. The claim is under a Protection Order until December 31, 2021 (instituted in response to the COVID-19 pandemic).

Previous Work

Four adits, along with several drifts and open cuts were put in by 1922, near Adit Creek (Brewer, 1918; Brewer, 1926). Work was reported up to 1925.

A property exam was done by Hugo Laanela in 1966 for Gunnex Ltd.. 13 rock samples were taken (Kikauka, 1993).

About 600 m of diamond drilling was done in 1969 by Jervis Inlet Mines Ltd. between the Lone Jack and Road showings (Kidlark & Yacoub, 1989).

About 800 m of diamond drilling was done by El Paso Mining and Milling Company in the early 70's (Kikauka, 1993). Drilling focused on the Treat and Copper Showing areas. El Paso also put in a grid (approximately 1 x 2 km) and conducted geological mapping, soil sampling, mag and VLF surveys. The work by Gunnex, Jervis Inlet Mines Ltd. and the El Paso Mining and Milling Company were not recorded. The information on these programs is mainly know through summaries by Ashworth Exploration Ltd. (Kidlark & Yacoub, 1989) and Anthian Resources Corporation (Kikauka, 1993), as well as limited summaries in GEM 1972 and 1973 (BCMEMP, 1973; BCMEMP, 1974).

Three days of prospecting and rock sampling were done by Ashworth Exploration Ltd. in 1987 and 1988. 49 rock samples and 3 stream sediment samples were taken (Kidlark & Yacoub, 1989).

In 1993, Anthian Resource Corporation put in a 10.4 km grid and conducted geological mapping, soil sampling, rock sampling, magnetometer and VLF surveys (Kikauka, 1993). 196 soil samples, 89 rock samples and 7 petrographic samples were submitted for analysis. About 50 hectares were mapped at a scale of 1:2500, and 2 hectares were mapped at a scale of 1:500.

In recent years, the ground was held by the nearby sand and gravel pit owner, but no work was done.

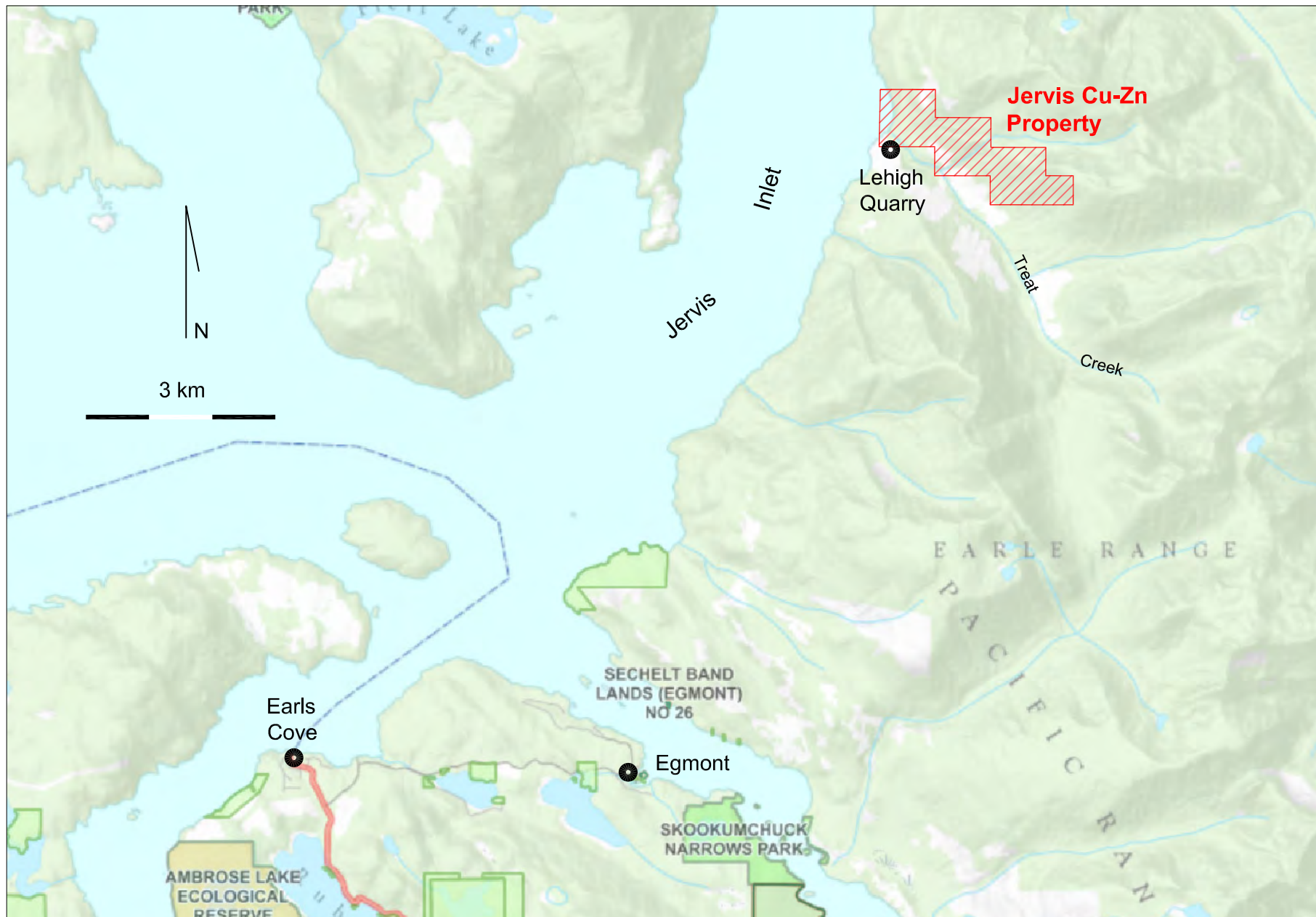


Figure 1: Location Map

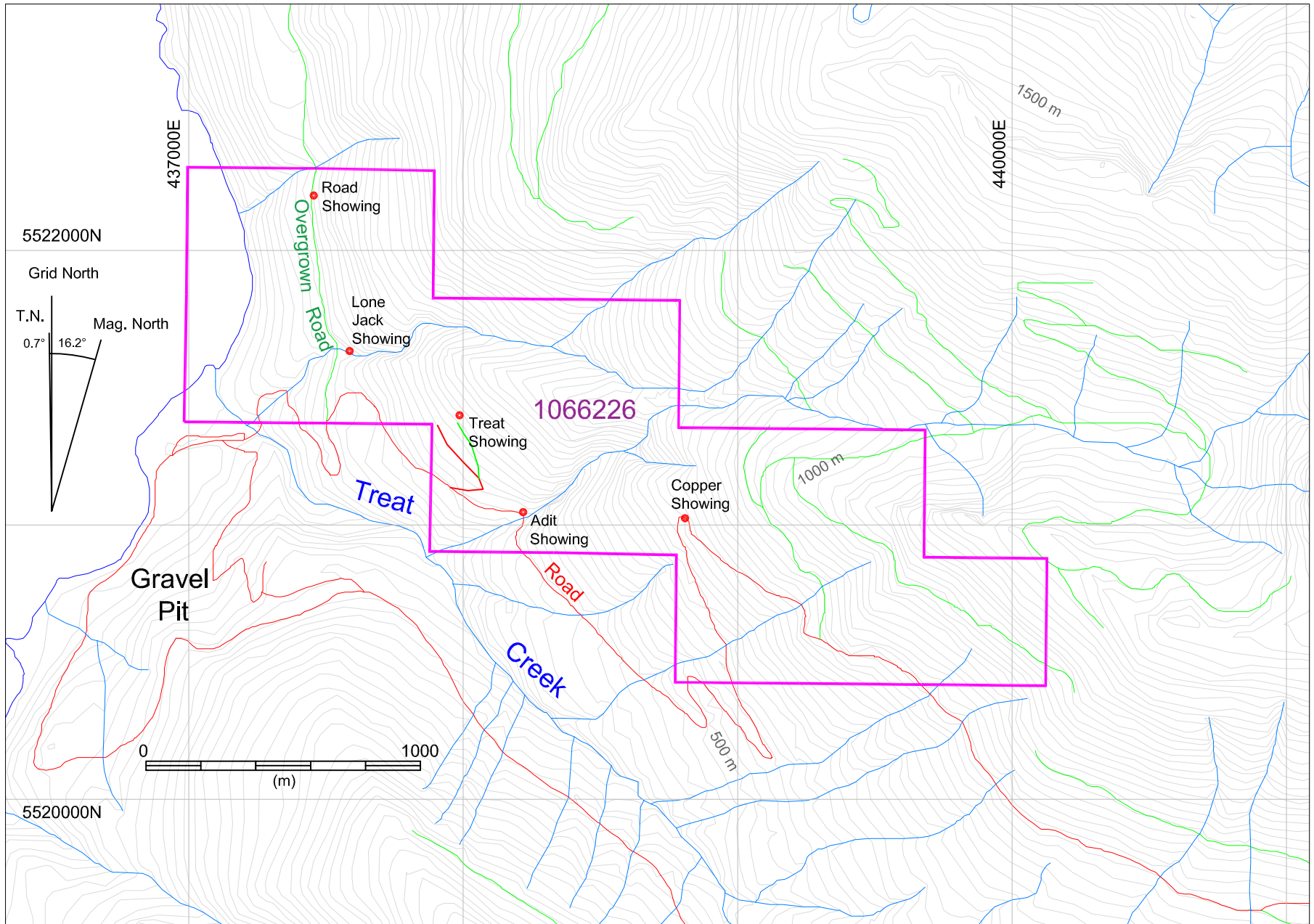


Figure 2: Claim Map

Scale = 1:20 000

The following Minfiles are on the property (Figure 2):

Copper Showing (092GNW017)

Adit Showing (092GNW095)

Treat Showing (092GNW097)

Lone Jack Showing (092GNW098)

Road showing (092GNW096)

Work Program Summary

The purpose of the 2019 program was to determine whether bimodal volcanics were associated with the mineralization and soil anomalies. A day of fieldwork was done on April 27, 2019. Four rock samples were collected and submitted for lithochemical analysis.

Regional Geology

The Jervis Cu-Zn Property is underlain by marine sedimentary and volcanic rocks of the lower Cretaceous Gambier Group (MapPlace, 2020). To the southwest, the Gambier Group rocks are in fault contact with sedimentary rocks of the Bowen Island Group, which include argillites, greywackes, wackes and conglomeritic turbidites. While the regional map shows the northwest trending fault contact bisecting the property, the contact should be southwest of the property, probably following Treat Creek. The regional map also shows a nearly 2 km long body of quartz diorite, though this is not supported by geological maps of the property.

The rocks in the area appear to be lower greenschist grade, and are commonly weakly foliated.

The dominant regional ice-flow direction in the area appears to be to the southeast (MapPlace, 2020), though it seems likely that initially ice would have flowed south-southeast down the inlet, and possibly westwards down Treat Creek as well.

The Gambier Group is host to the Britannia VMS deposit, which is about 55 km to southeast of the property. Between 1905 and 1977, the Britannia orebodies yielded approximately 47.8 million tonnes of ore grading 1.1 per cent copper, 0.65 per cent zinc, 6.8 grams per tonne silver and 0.6 grams per tonne gold (Minfile, 2008). Britannia was the largest VMS deposit mined and the second largest found in BC (after Windy Craggy).

Property Geology

Geological mapping by El Paso Mining and Milling Company in the early 70's (Kidlark & Yacoub, 1989) shows the property to be largely underlain by andesitic volcanics tuffs and flows, with lesser mudstone interbeds and minor chert. In addition, agglomerate was mapped in the north part of the property and significant intrusives to the east. Anthian Resource Corporation remapped the western 2/3's of the property (Kikauka, 1993), though they seem to have simply reused the El Paso map with minor additions and changes.

Rock sample descriptions from the 1993 report suggest that felsic rocks are common on the property. Limited whole rock sampling by Anthian Resources Corporation (Kikauka, 1993) indicated the volcanic rocks sampled had basaltic or rhyolitic compositions, though these results were not explored in the report. Sampling by Sigurgeirson in 2019 (this report) also indicated bimodal volcanics on the property, rather than andesite. An area mapped as agglomerate was seen to contain a felsic clast dominant breccia during the 2019 property exam.

A significant area is outlined as underlain by intrusives on the El Paso Mining and Milling Company map, but the actual distribution of outcrop indicates that these intrusives underlie smaller areas.

Bedding orientations most commonly strike northwest with a moderate to steep southwest dip. However, northeast dips are also recorded, suggesting that significant folding occurs on the property. Northeast trending lineaments partly followed by Adit and New Jack Creeks are likely faults.

A considerable amount of glacio-fluvial gravel can be seen around the mouth of Treat Creek, though much of it has been extracted by the gravel pit operation. The author observed till at several locations between 200 m and 400 m elevation.

Figure 3 is a revised geology map based on previous efforts.

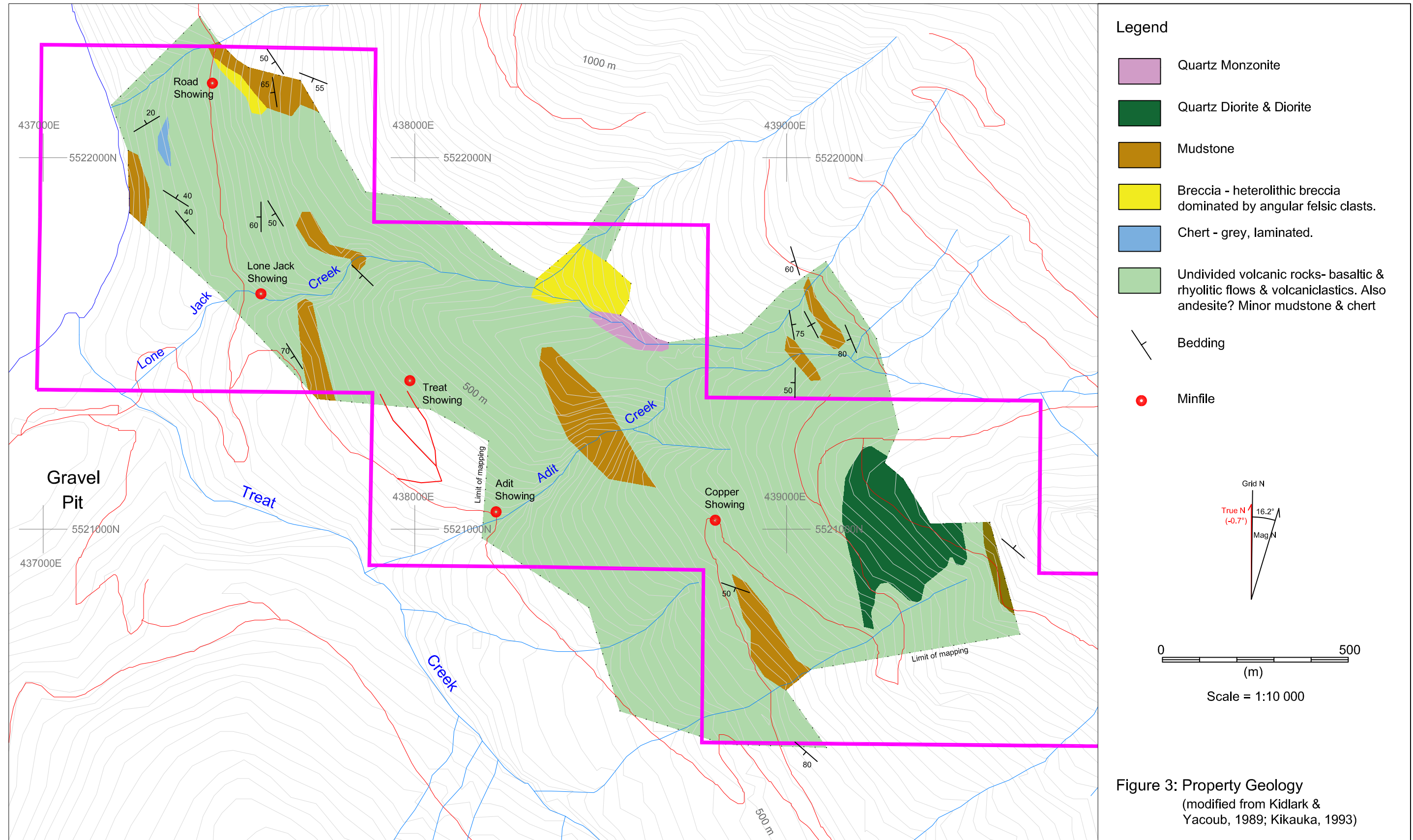


Figure 3: Property Geology
(modified from Kidlark & Yacoub, 1989; Kikauka, 1993)

Mineralization, Soil and Geophysical Anomalies

Mineralization

Mineralization featuring massive and/or disseminated pyrite, pyrrhotite, chalcopyrite, sphalerite and magnetite is documented at numerous locations over approximately 2 km. Epidote and chlorite alteration, as well as silicification, are commonly associated with the mineralization. The locations of diamond drill holes and select historic samples are shown on Figure 4.

A number of adits and drifts were driven in a series of steeply north dipping (near vertical) and east striking deposits of massive magnetite and pyrrhotite with minor chalcopyrite, usually grading about 1% Cu (Brewer, 1918; Brewer, 1926). While the extent of the mineralization is not clear, it was encountered in drifts and adits over a 70 m elevation range. A map from the 1925 Minister of Mines Annual Report shows the adits along the west side of Adit Creek around the 400 to 500 m elevation. Descriptions of the adits in previous Annual Reports place the adits at approximately 550 to 600 m elevation, but only known adit (ie. The Adit Showing) in the area is at an elevation of about 340 m and is on the west side of the Creek, which suggests the older reports had the elevation wrong. The Adit Showing features vein and fracture controlled pyrite, pyrrhotite, magnetite, chalcopyrite and sphalerite. The best sample returned 3 opt Ag and 0.4% Cu over a 30 cm chip sample. Most of the adits were driven through overburden and have likely collapsed, which would explain why more recent programs have not located them.

The Copper Showing Minfile references the massive mineralization in the historical workings, but appears to be in the wrong location (ie. it should be a short distance upslope from the Adit Showing). Surface sampling of altered and mineralized rock exposed in the road cuts in area of the Copper Showing Minfile returned anomalous but not high values compared to the other showings. Four short holes (about 20' each) and two longer holes were drilled here in the early 70's by El Paso Mining and Milling Company. No results are recorded for these holes. The best result in this area was from a grab sample collected in 1990 that returned 2.0% Zn.

While the Minfile classifies the mineralization at the Copper Showing as skarn, there is no description of minerals particularly characteristic of skarn in recent reports. There is a single mention of garnet in the 1922 annual report. Other than that, the minerals reported are consistent with a VMS environment. While limited intrusives have been mapped on the property, they are not associated with the main areas of mineralization or the soil anomalies. No limestone or marble has been mapped on the property. These observations argue against classifying the mineralization on the property as skarn.

The Treat Showings consist of disseminated and veinlet hosted pyrite, pyrrhotite, chalcopyrite and sphalerite sampled on surface and in drillcore. Two diamond drill holes were drilled here in the early 70's to test coincident soil-mag-vlf anomalies. Hole T1 (311 m) intersected 0.2% Cu over 9.1 m. Hole T2 (345 m) encountered scattered chalcopyrite and sphalerite in the first 122 m, with the highest intercept being 0.16% Cu over 3 m. The best surface sample was an 80 cm chip sample which returned 10.98 oz/t Ag, 1.92% Zn and 0.16% Cu. A 1 m chip in pyritic, silicified argillite northeast of the T1 drillhole returned 0.54% Zn.

The map in the 1925 Ministry of Mines Annual Report (Brewer, 1926) indicates that pyrrhotite, sphalerite and chalcopyrite stringers occur up Adit Creek at an elevation of about 700 m. This showing and the mineralization sampled to the east of Adit Creek could be included with the Treat mineralization in style.

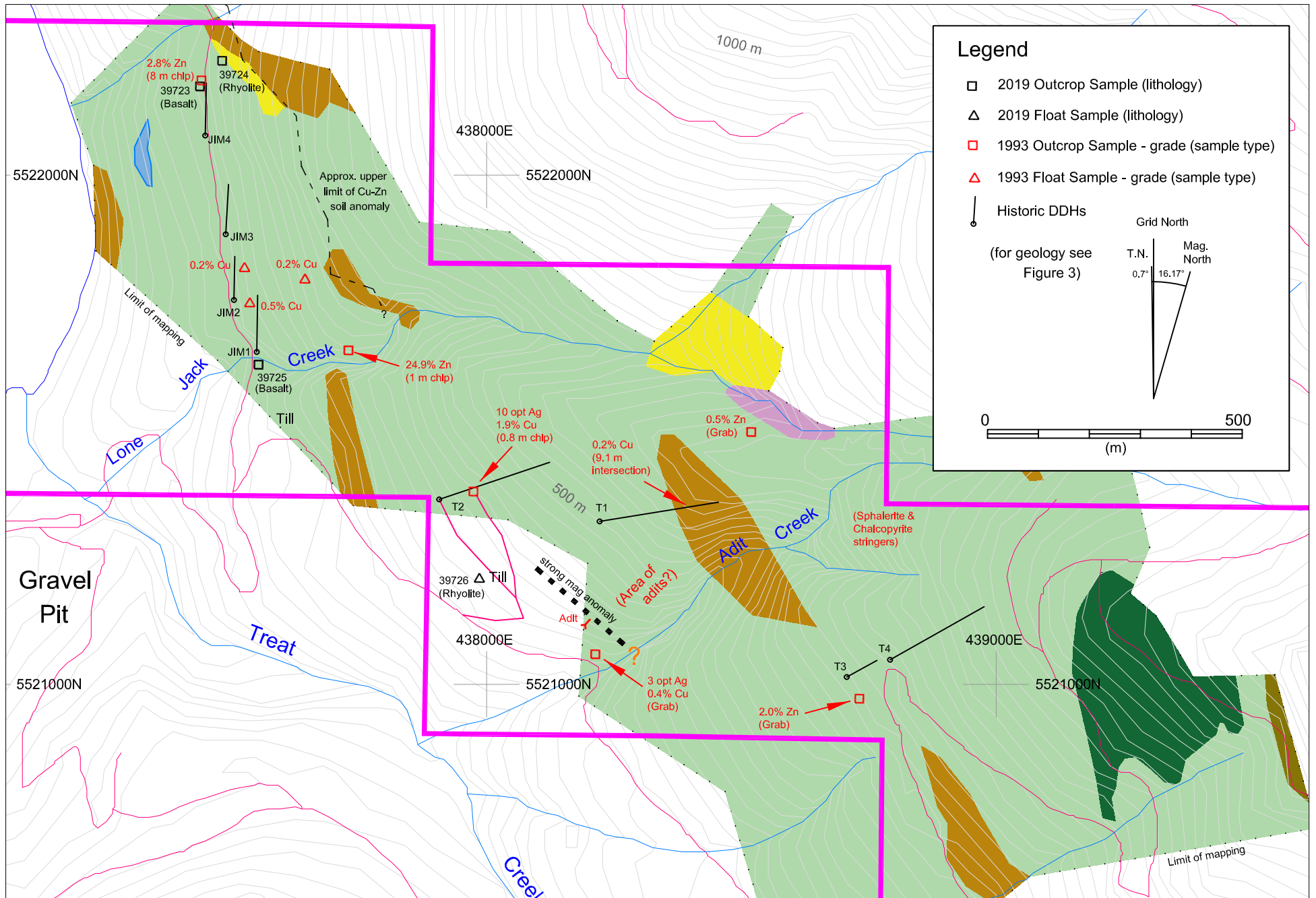


Figure 4: Rock Sampling Map

Scale = 1:10 000

The Lone Jack Showing consists of disseminated or veinlet hosted magnetite and pyrrhotite, with minor chalcopyrite and sphalerite, which is hosted by a light grey felsic tuff or flow in contact with argillaceous siltstone. The best sample in the showing area returned 0.17% Cu.

About 50 m upstream from the Lone Jack Showing, a 1 m chip sample across a contact zone between argillic siltstone and andesite tuff returned an assay of 24.9% Zn, 0.15% Cu and >0.1% Cd. The sample description states the mineralization was “fracture filling pyrite 1 to 2%, up to 15% pyrrhotite and 3% sphalerite”, which suggests that the sphalerite was mostly fine grained and not seen. This sample approximately coincides with the south end of a strong Zn soil anomaly (see discussion below)

Disseminated pyrite, sphalerite and chalcopyrite occur in strongly limonitic basalt in a roadcut at the Road Showing. A composite of 4 adjacent chip samples averaged 2.8% Zn over 8 m. The best of these samples returned 3.76% Zn and 0.13% Cu over 2 m. About 50 m upslope is an outcrop of porphyritic type 2 rhyolite. Poorly exposed felsic clast dominated breccia occurs between the basalt and the rhyolite.

Soil Anomalies

A strong coherent Cu and/or Zn soil anomaly (Kikauka, 1993, Kidlark and Yacoub, 1989) extends for about 2.5 km in a broad northwest trending band (Figures 5 & 6). The anomaly is open to the northwest, the south and southeast. The location of mineralized rock samples and the soil anomalies generally coincide. In addition, two locations where the author noted thick till or glaciofluvial material coincide with areas of subdued geochemical response. These observations suggest that the soil anomalies are local in origin.

Southeast of Lone Jack Creek the soil anomaly is somewhat disrupted by transported overburden and areas of no sampling due to steep terrain. North of Lone Jack Creek the Cu-Zn anomaly is well defined. The upslope limit of the anomaly is shown on Figure 4. At the north end, the upslope limit of the anomaly coincides with rhyolite that is about 50 m upslope from mineralized basalt at the road showing. Further south, the area of the anomaly features a number of rock samples with high Cu and/or Zn values, and mapping in this area frequently notes the presence of pyrite, pyrrhotite, chalcopyrite and quartz.

Au, Ag, As and Pb soil anomalies are more scattered, but generally coincide with the broader Cu-Zn soil anomaly.

Geophysical Anomalies

A strong magnetometer response just above the Adit Showing indicates that massive magnetite may be in this area (Kikauka, 1993). The mag anomaly is open to the southeast and is coincident with a strong Cu in soil anomaly. This mag anomaly may indicate the location of the massive pyrrhotite and magnetite mineralization described in the Annual Reports by Brewer (1918; 1923).

While there are other mag and VLF anomalies documented in the 1993 report, more geological information is needed to interpret them.

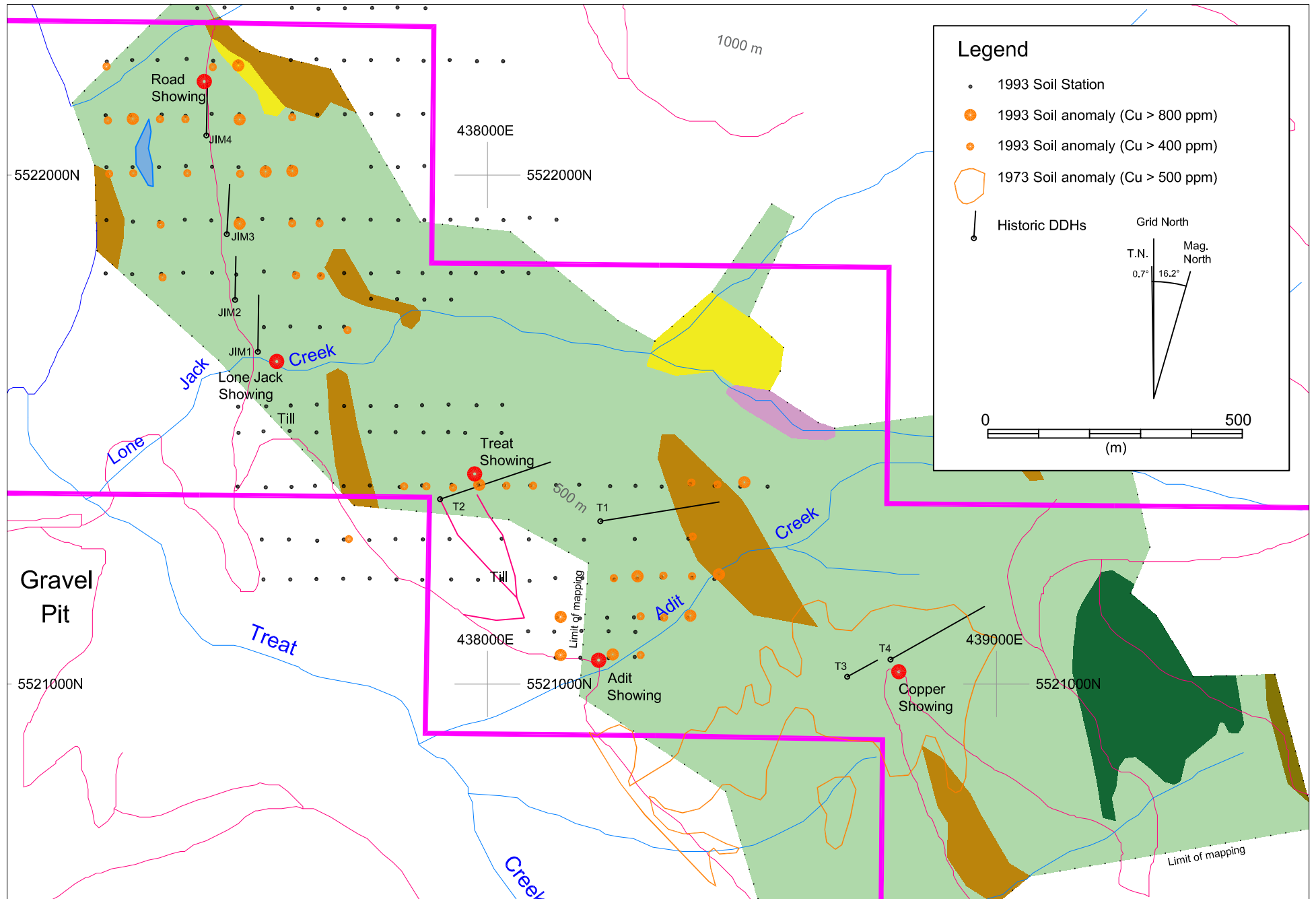


Figure 4: Historical Cu in Soil Anomaly Map

Scale = 1:10 000

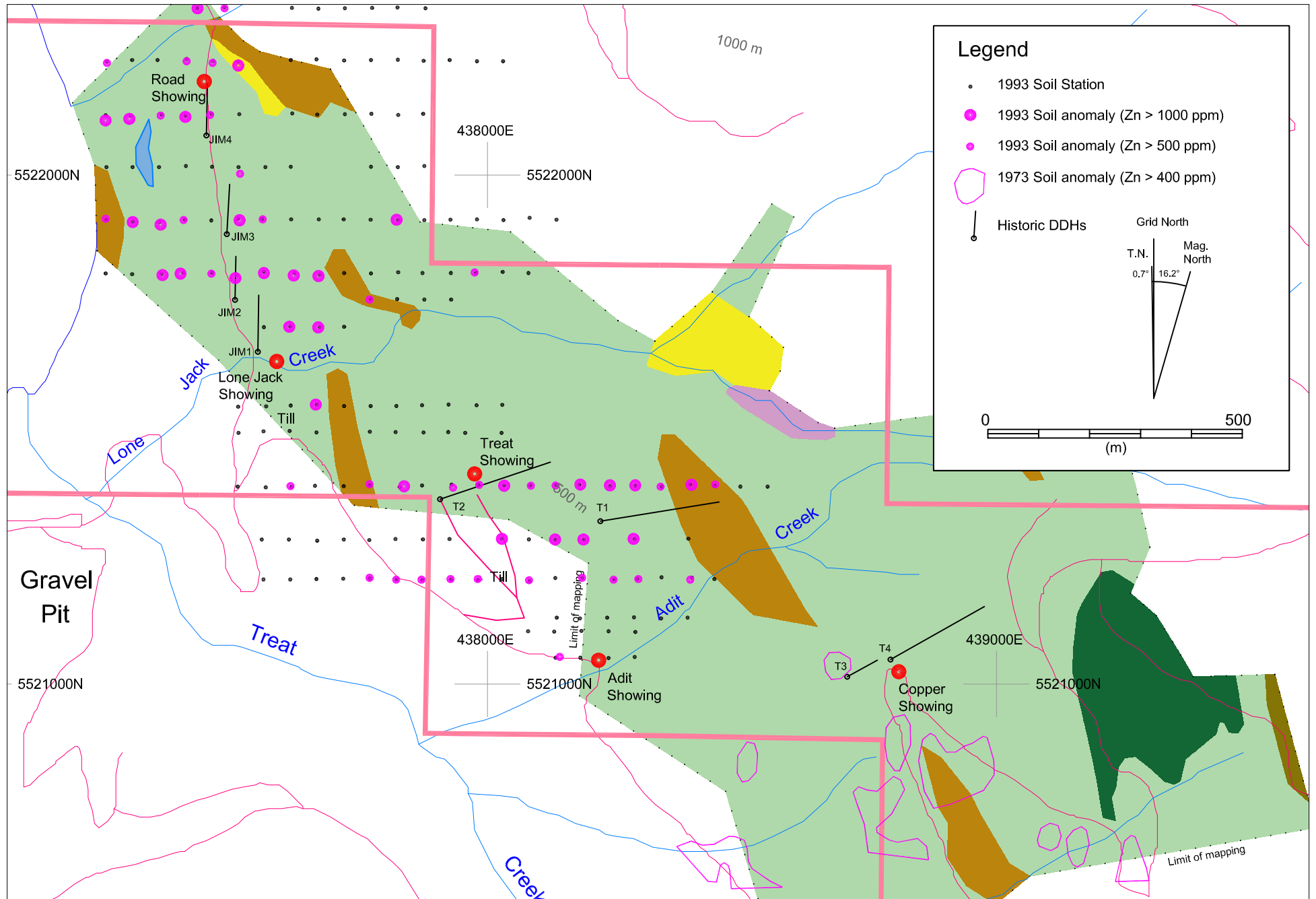


Figure 5: Historical Zn in Soil Anomaly Map

Scale = 1:10 000

Rock Sampling

Four rock samples were collected and submitted for whole rock analysis. Rock sample locations are shown on Figure 4. Samples were crushed to 70% passing 2 mm, then riffle split and 250 g were pulverized to 85% passing 75 μm . After a lithium borate fusion and acid digestion, major elements were analyzed by ICP-AES and trace elements were analyzed by ICP-MS. Sample descriptions and results are summarized in Table 1. Appendix 1 contains the Assay and QC certificates.

Sample ID	Easting	Northing	Lithochemical Classification	Descriptions
39723	437438	5522175	Basalt	Dark greenish black, very fine grained, limonitic basalt. Trace pyrite. From relatively unmineralized section.
39724	437481	5522224	Rhyolite	White weathering, blocky, light grey felsic volcanic. Aphanitic, hard & feldspar porphyritic.
39725	437553	5521628	Basalt	Dark grey, very fine grained basalt, Trace pyrite.
39726	437985	5521207	Rhyolite	Angular felsic volcanic float from dense till. Similar to Sample 39723.

Table 1: Rock Sample Descriptions

The purpose of the sampling was to determine the petrochemistry of the volcanic rocks. The felsic volcanic samples plotted in the rhyolite field on a TAS plot (Le Maitre, 1989), though sample 39726 falls just off the plot to the right due to its high silica content (Figure 7). On a Zr/Ti vs Nb/Y (Pearce, 1996) plot, both samples plot in the rhyolite + dacite field (Figure 8). The basalt samples plot in the basalt field and in the basaltic-andesite field on the TAS plot, but both fall within the basalt field on the Zr/Ti vs Nb/Y plot.

The rhyolites fall in the FII field (Figure 9) on a La/Yb (cn) vs Yb (cn) plot (Hart et al., 2004). Phanerozoic VMS deposits are commonly associated with this type of rhyolite. However, when compared to various discriminant plots for post-Archean rhyolites associated with felsic dominated (evolved) VMS environments (Piercey, 2011) the results are ambiguous, with the samples plotting in the overlap area between VMS barren and VMS hosting fields.

QA/QC

Due to the preliminary and limited nature of the sampling program, no QA/QC was done.

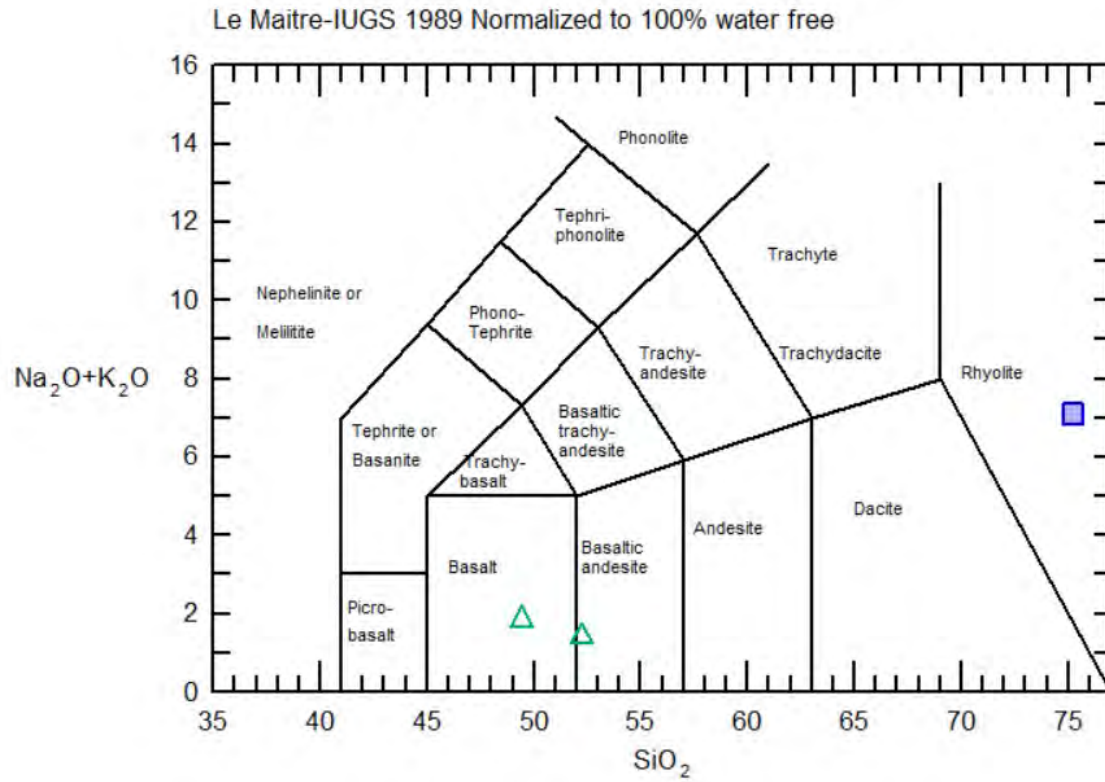


Figure 7: TAS plot.

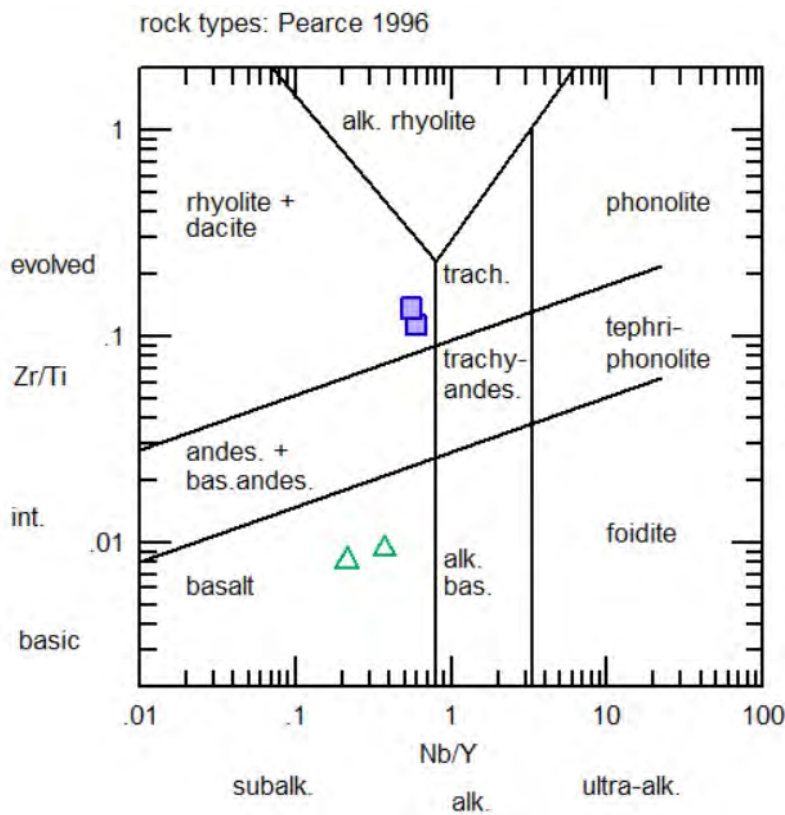


Figure 8: Zr/Ti vs Nb/Y plot.

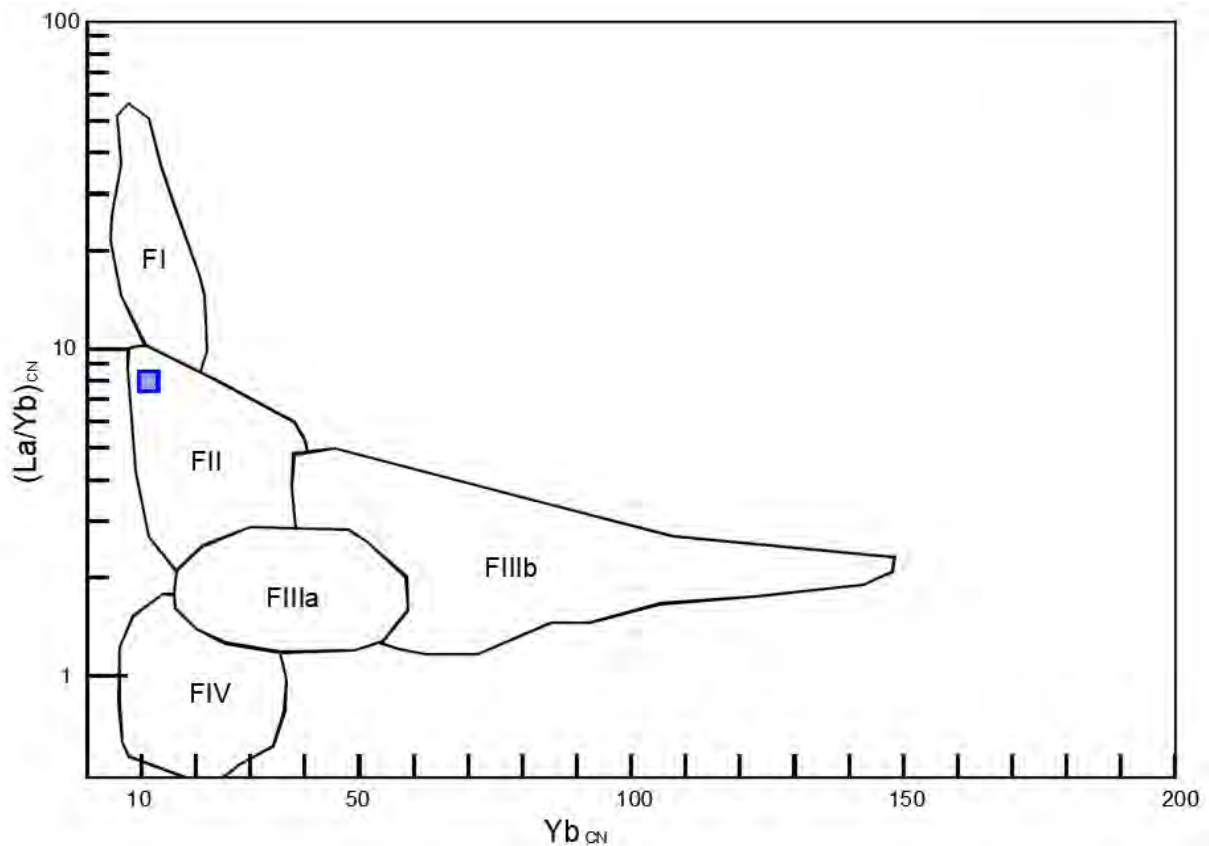


Figure 9: La/Yb (cn) vs Yb (cn) rhyolite discriminant plot.

Conclusions

In the area examined by the author (ie. the Road Showing), mineralization is associated with bimodal volcanics rather than andesites. The felsic volcanics are FII rhyolites, which are associated with VMS deposits in post-Archean environments, though other petrochemical discriminant plots are ambiguous with respect to whether the rhyolites are likely barren or VMS hosting.

The rhyolite sampled near the road showing is at the upslope limit of a strong Cu +/- Zn soil anomaly that extends for about 700 m to Lone Jack Creek. In this area, a 1 m chip sample graded 24.9% Zn.

Drilling by Jervis Inlet Mines Ltd. in the area was 130 m to 200 m west of this zone and oblique to it, leaving the zone untested.

East of Lone Jack Creek, the soil anomaly continues on the same general trend, though it is less well defined, likely due to variable till cover and the Adit Creek ravine. A review of the Ministry of Mines Annual reports indicates that the historic workings were upslope from the Adit showing, and that drilling by the El Paso Mining and Milling Company did not test this zone. This conclusion is supported by the strong magnetic anomaly immediately upslope of the Adit showing, which may be associated with the massive pyrrhotite and magnetite described in the old workings. The coincident mag and Cu in soil anomaly in this area is open to the southeast.

Only limited rock sampling has been done outside of the known showings, but a significant number of these returned anomalous results. Anomalous soil and rock sampling outlines a zone approximately 2.5 kilometers long and several hundred meters wide that is open to the southeast and northwest.

The Jervis Cu-Zn Property has not been explored for VMS targets. Drilling did not test the main historic showings, it did not adequately test the soil anomaly north of Lone Jack Creek, nor was it done with an understanding of the volcanic stratigraphy.

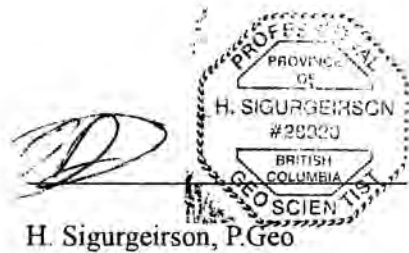
References

- BC Department of Mines and Petroleum Resources (1973) *Geology, Exploration and Mining in British Columbia, 1972; BCMEMPR*, pp. 278-279.
- BC Department of Mines and Petroleum Resources (1974) *Geology, Exploration and Mining in British Columbia, 1973; BCMEMPR*, pp. 242-243.
- Brewer, W.M. (1918) Annual Report of the Minister of Mines - Western Mineral Survey District; *BC Bureau of Mines*, Annual Report 1917, pg.283.
- Brewer, W.M. (1926) Annual Report of the Minister of Mines - Western Mineral Survey District; *BC Bureau of Mines*, Annual Report 1925, pg.302.
- Hart, T.R., Gibson, H.L. and Leshner, C.M. (2004) Trace element geochemistry and petrogenesis of felsic volcanic rocks associated with volcanogenic massive sulphide Cu-Zn-Pb sulphide deposits; *Economic Geology*, Vol.99, pp.1003-1013.
- Kidlark, G.R. & Yacoub, F.F. (1989) Report on the Jervis Inlet Property; *BC Ministry of Energy, Mines and Petroleum Resources*, Assessment Report 18346.
- Kikauka, A. (1993) Geological, Geochemical, Geophysical Report on the Treat 1 and 3 Mineral Claims, Jervis Inlet; *BC Ministry of Energy, Mines and Petroleum Resources*, Assessment Report 23238.
- Le Maitre, R. W. (editor), Bateman, P., Dudek, A., Keller, J. Et al. (1989) A Classification of Igneous rocks and Glossary of Term: Recommendations of the International Union of Geological Sciences Subcommission on the Systematics of Igneous Rocks. *Blackwell Scientific Publications*, Oxford.
- MapPlace (2019): Geology, topography and claims of the Jervis Inlet Cu-Zn Property area, (NTS 092G 081); British Columbia Geological Survey MapPlace website, *BC Ministry of Energy, Mines and Petroleum Resources*; URL <<https://www2.gov.bc.ca/gov/content/industry/mineral-exploration-mining/british-columbia-geological-survey/mapplace> >, scale 1:20 000, [March, 2020].
- MINFILE (2008): Britannia, 092GNW003; *BC Ministry of Energy and Mines*, MINFILE digital data, posted July 1985, revised April 2008, URL <<https://minfile.gov.bc.ca/Summary.aspx?minfilno=092GNW003> >
- Pearce, J. A. (1996) A user's guide to basalt discrimination diagrams. In: Wyman, D. A. (ed.) Trace Element Geochemistry of Volcanic Rocks: Applications for Massive Sulphide Exploration. *Geological Association of Canada*, Short Course Notes 12, 79–113.
- Piercey, S.J. (2011) The setting, style, and role of magmatism in the formation of volcanogenic massive sulfide deposits, *Mineralium Deposita*, Vol.46, pp.449–471.

Statement of Qualifications

I certify the following:

1. I graduated in 1995 from the University of British Columbia with a B.Sc. in the Geological Sciences.
2. I have worked in mining and mineral exploration continuously since graduation.
3. I have worked on VMS, porphyry, epithermal and mesothermal Au vein, anorthosite hosted Ti, nephrite and other exploration programs in Canada, Mexico and China. I have developed and operated 3 dimension stone quarries on the BC coast.
4. I am a professional geoscientist in the Association of Professional Engineers and Geoscientists of British Columbia, and have been a member in good standing (member #28920) since 2004.
5. I carried out the work program described herein and wrote this report.



H. Sigurgeirson, P. Geo

APRIL 26, 2020

Date

This document represents an electronic version of the original hard copy document, sealed, signed and dated by Helgi Sigurgeirson, P. Geo and retained on file. The content of the electronically transmitted document can be confirmed by referring to the original hard copy and filed

Cost Statement

Consultant	Item	Rate	Units	Amount	Total
H. Sigurgeirson, P.Geol.	Fieldwork: April 27 & November 29, 2019	\$500.00	days	1	\$500.00
	Assistant	\$250.00	days	1	\$250.00
	Boat hire	\$150.00	hour	2	\$300.00
	Report				\$1,500.00
	Subtotal				\$2,550.00
Expenses	Accommodations	\$100.00	days	1	\$100.00
	Food	\$50.00	days	1	\$50.00
	Subtotal				\$150.00
Samples	Analysis	\$68.80	sample	4	\$275.19

Total = \$2,875.19



Print and Close

Cancel

Mineral Titles Online

Mineral Claim Exploration and Development Work/Expiry Date Change

Confirmation

Recorder: SAXIFRAGE GEOLOGICAL SERVICES LTD. (280348) **Submitter:** SAXIFRAGE GEOLOGICAL SERVICES LTD. (280348)
Recorded: 2020/JAN/25 **Effective:** 2020/JAN/25
D/E Date: 2020/JAN/25

Confirmation

If you have not yet submitted your report for this work program, your technical work report is due in 90 days. The Exploration and Development Work/Expiry Date Change event number is required with your report submission. **Please attach a copy of this confirmation page to your report.** Contact Mineral Titles Branch for more information.

Event Number: 5771654

Work Type: Technical Work
Technical Items: Geochemical

Work Start Date: 2019/APR/27
Work Stop Date: 2019/APR/27
Total Value of Work: \$ 2875.19
Mine Permit No:

Summary of the work value:

Title Number	Claim Name/Property	Issue Date	Good To Date	New Good To Date	# of Days Forward	Area in Ha	Applied Work Value	Submission Fee
1066226	JC1	2019/FEB/01	2020/FEB/01	2021/SEP/30	607	270.85	\$ 2248.44	\$ 0.00

Financial Summary:

Total applied work value: \$ 2248.44

PAC name: SAXIFRAGE GEOLOGICAL SERVICES LTD.
Debited PAC amount: \$ 0.0
Credited PAC amount: \$ 626.75

Total Submission Fees: \$ 0.0

Total Paid: \$ 0.0

Please print this page for your records.

The event was successfully saved.

Click [here](#) to return to the Main Menu.

Appendix I

1. Certificate of Analysis
2. QC Certificate



ALS Canada Ltd.
 2103 Dollarton Hwy
 North Vancouver BC V7H 0A7
 Phone: +1 (604) 984 0221 Fax: +1 (604) 984 0218
 www.alsglobal.com/geochemistry

To: SAXIFRAGE GEOLOGICAL SERVICES LTD.
 47312 SCHOONER WAY
 PENDER ISLAND BC V0N 2M2

Page: 1
 Total # Pages: 2 (A - D)
 Plus Appendix Pages
 Finalized Date: 12-JAN-2020
 This copy reported on
 27-APR-2020
 Account: SAXGEO

VA19314676

This report is for 4 Rock samples submitted to our lab in Vancouver, BC, Canada on 11-DEC-2019.

The following have access to data associated with this certificate:

HELGI SIGURGEIRSON

SAMPLE PREPARATION

ALS CODE	DESCRIPTION
WEI-21	Received Sample Weight
DISP-01	Disposal of all sample fractions
CRU-QC	Crushing QC Test
PUL-QC	Pulverizing QC Test
LOG-21	Sample logging - ClientBarCode
CRU-31	Fine crushing - 70% <2mm
SPL-21	Split sample - riffle splitter
PUL-31	Pulverize up to 250g 85% <75 um

ANALYTICAL PROCEDURES

ALS CODE	DESCRIPTION	INSTRUMENT
ME-ICP06	Whole Rock Package - ICP-AES	ICP-AES
OA-GRA05	Loss on Ignition at 1000C	WST-SEQ
ME-MS81	Lithium Borate Fusion ICP-MS	ICP-MS
TOT-ICP06	Total Calculation for ICP06	

This is the Final Report and supersedes any preliminary report with this certificate number. Results apply to samples as submitted. All pages of this report have been checked and approved for release.

***** See Appendix Page for comments regarding this certificate *****

Signature:

Saa Traxler, General Manager, North Vancouver



ALS Canada Ltd.
 2103 Dollarton Hwy
 North Vancouver BC V7H 0A7
 Phone: +1 (604) 984 0221 Fax: +1 (604) 984 0218
 www.alsglobal.com/geochemistry

To: SAXIFRAGE GEOLOGICAL SERVICES LTD.
 47312 SCHOONER WAY
 PENDER ISLAND BC V0N 2M2

Page: 2 - A
 Total # Pages: 2 (A - D)
 Plus Appendix Pages
 Finalized Date: 12-JAN-2020
 Account: SAXGEO

CERTIFICATE OF ANALYSIS VA19314676

Sample Description	Method Analyte Units LOD	WEI-21 Recvd Wt. kg	ME-MS81 Ba ppm	ME-MS81 Ce ppm	ME-MS81 Cr ppm	ME-MS81 Cs ppm	ME-MS81 Dy ppm	ME-MS81 Er ppm	ME-MS81 Eu ppm	ME-MS81 Ga ppm	ME-MS81 Gd ppm	ME-MS81 Hf ppm	ME-MS81 Ho ppm	ME-MS81 La ppm	ME-MS81 Lu ppm	ME-MS81 Nb ppm
		0.02	0.5	0.1	10	0.01	0.05	0.03	0.03	0.1	0.05	0.2	0.01	0.1	0.01	0.2
039723		0.84	420	25.6	110	0.64	5.54	2.83	1.68	18.2	5.55	3.2	1.09	10.3	0.37	9.9
039724		0.40	1295	38.6	10	1.08	2.59	1.81	0.55	12.3	2.73	3.9	0.52	20.7	0.36	9.4
039725		0.44	202	6.0	420	0.19	3.48	2.24	0.53	12.8	2.75	1.0	0.79	1.8	0.35	4.2
039726		0.90	963	38.6	40	0.45	2.67	1.86	0.52	14.4	2.38	3.8	0.61	20.7	0.33	9.1

***** See Appendix Page for comments regarding this certificate *****



ALS Canada Ltd.
 2103 Dollarton Hwy
 North Vancouver BC V7H 0A7
 Phone: +1 (604) 984 0221 Fax: +1 (604) 984 0218
 www.alsglobal.com/geochemistry

To: SAXIFRAGE GEOLOGICAL SERVICES LTD.
 47312 SCHOONER WAY
 PENDER ISLAND BC V0N 2M2

Page: 2 - B
 Total # Pages: 2 (A - D)
 Plus Appendix Pages
 Finalized Date: 12-JAN-2020
 Account: SAXGEO

CERTIFICATE OF ANALYSIS VA19314676

Sample Description	Method Analyte Units LOD	ME-MS81	ME-MS81	ME-MS81	ME-MS81	ME-MS81	ME-MS81	ME-MS81	ME-MS81	ME-MS81	ME-MS81	ME-MS81	ME-MS81	ME-MS81	ME-MS81	
		Nd	Pr	Rb	Sm	Sn	Sr	Ta	Tb	Th	Tm	U	V	W	Y	Yb
		ppm	ppm	ppm	ppm	ppm	ppm	ppm	ppm	ppm	ppm	ppm	ppm	ppm	ppm	ppm
		0.1	0.03	0.2	0.03	1	0.1	0.1	0.01	0.05	0.01	0.05	5	1	0.1	0.03
039723		17.5	3.58	4.7	4.72	7	208	1.3	0.81	0.80	0.40	0.47	436	2	26.8	2.57
039724		16.3	4.22	43.8	2.89	<1	220	1.2	0.38	3.98	0.29	1.64	15	1	15.7	1.99
039725		6.5	1.11	12.4	2.01	2	268	0.5	0.47	0.60	0.35	0.94	240	1	19.7	2.55
039726		15.3	4.28	34.2	2.78	1	154.5	1.3	0.40	4.11	0.31	1.93	11	1	16.3	2.20

***** See Appendix Page for comments regarding this certificate *****



ALS Canada Ltd.
 2103 Dollarton Hwy
 North Vancouver BC V7H 0A7
 Phone: +1 (604) 984 0221 Fax: +1 (604) 984 0218
 www.alsglobal.com/geochemistry

To: SAXIFRAGE GEOLOGICAL SERVICES LTD.
 47312 SCHOONER WAY
 PENDER ISLAND BC V0N 2M2

Page: 2 - C
 Total # Pages: 2 (A - D)
 Plus Appendix Pages
 Finalized Date: 12-JAN-2020
 Account: SAXGEO

CERTIFICATE OF ANALYSIS VA19314676

Sample Description	Method	MS81	ICP06	ICP06	ICP06	ICP06	ICP06	ICP06	ICP06	ICP06	ICP06	ICP06	ICP06	ICP06	ICP06	GRA05
	Analyte	Zr	SiO2	Al2O3	Fe2O3	CaO	MgO	Na2O	K2O	Cr2O3	TiO2	MnO	P2O5	SrO	BaO	LOI
	Units	ppm	%	%	%	%	%	%	%	%	%	%	%	%	%	%
	LOD	2	0.01	0.01	0.01	0.01	0.01	0.01	0.01	0.002	0.01	0.01	0.01	0.01	0.01	0.01
039723		112	48.4	14.10	13.80	6.92	6.92	0.90	0.39	0.016	2.02	0.43	0.18	0.02	0.05	5.03
039724		170	74.1	13.55	2.20	0.48	1.03	3.85	3.13	<0.002	0.25	0.05	0.08	0.03	0.14	1.32
039725		34	47.6	14.60	9.61	13.05	9.63	0.98	0.79	0.058	0.70	0.15	0.06	0.03	0.02	1.95
039726		155	76.3	11.80	2.15	1.20	0.38	4.33	2.28	0.005	0.19	0.08	0.05	0.01	0.10	1.47

***** See Appendix Page for comments regarding this certificate *****



ALS Canada Ltd.
2103 Dollarton Hwy
North Vancouver BC V7H 0A7
Phone: +1 (604) 984 0221 Fax: +1 (604) 984 0218
www.alsglobal.com/geochemistry

To: SAXIFRAGE GEOLOGICAL SERVICES LTD.
47312 SCHOONER WAY
PENDER ISLAND BC V0N 2M2

Page: 2 - D
Total # Pages: 2 (A - D)
Plus Appendix Pages
Finalized Date: 12-JAN-2020
Account: SAXGEO

CERTIFICATE OF ANALYSIS VA19314676

Sample Description	Method Analyte Units LOD	TOT-ICP06 Total % 0.01
039723		99.18
039724		100.21
039725		99.23
039726		100.35



ALS Canada Ltd.
2103 Dollarton Hwy
North Vancouver BC V7H 0A7
Phone: +1 (604) 984 0221 Fax: +1 (604) 984 0218
www.alsglobal.com/geochemistry

To: SAXIFRAGE GEOLOGICAL SERVICES LTD.
47312 SCHOONER WAY
PENDER ISLAND BC V0N 2M2

Page: Appendix 1
Total # Appendix Pages: 1
Finalized Date: 12-JAN-2020
Account: SAXGEO

CERTIFICATE OF ANALYSIS VA19314676

CERTIFICATE COMMENTS

LABORATORY ADDRESSES

Applies to Method:	Processed at ALS Vancouver located at 2103 Dollarton Hwy, North Vancouver, BC, Canada.			
	CRU-31	CRU-QC	DISP-01	LOG-21
	ME-ICP06	ME-MS81	OA-GRA05	PUL-31
	PUL-QC	SPL-21	TOT-ICP06	WEI-21



ALS Canada Ltd.
 2103 Dollarton Hwy
 North Vancouver BC V7H 0A7
 Phone: +1 (604) 984 0221 Fax: +1 (604) 984 0218
 www.alsglobal.com/geochemistry

To: SAXIFRAGE GEOLOGICAL SERVICES LTD.
 47312 SCHOONER WAY
 PENDER ISLAND BC V0N 2M2

Page: 1
 Total # Pages: 3 (A - C)
 Plus Appendix Pages
 Finalized Date: 12-JAN-2020
 This copy reported on
 27-APR-2020
 Account: SAXGEO

VA19314676

This report is for 4 Rock samples submitted to our lab in Vancouver, BC, Canada on 11-DEC-2019.

The following have access to data associated with this certificate:

HELGI SIGURGEIRSON

SAMPLE PREPARATION

ALS CODE	DESCRIPTION
WEI-21	Received Sample Weight
DISP-01	Disposal of all sample fractions
CRU-QC	Crushing QC Test
PUL-QC	Pulverizing QC Test
LOG-21	Sample logging - ClientBarCode
CRU-31	Fine crushing - 70% <2mm
SPL-21	Split sample - riffle splitter
PUL-31	Pulverize up to 250g 85% <75 um

ANALYTICAL PROCEDURES

ALS CODE	DESCRIPTION	INSTRUMENT
ME-ICP06	Whole Rock Package - ICP-AES	ICP-AES
OA-GRA05	Loss on Ignition at 1000C	WST-SEQ
ME-MS81	Lithium Borate Fusion ICP-MS	ICP-MS
TOT-ICP06	Total Calculation for ICP06	

This is the Final Report and supersedes any preliminary report with this certificate number. Results apply to samples as submitted. All pages of this report have been checked and approved for release.

***** See Appendix Page for comments regarding this certificate *****

Signature:

Saa Traxler, General Manager, North Vancouver



ALS Canada Ltd.
 2103 Dollarton Hwy
 North Vancouver BC V7H 0A7
 Phone: +1 (604) 984 0221 Fax: +1 (604) 984 0218
 www.alsglobal.com/geochemistry

To: SAXIFRAGE GEOLOGICAL SERVICES LTD.
 47312 SCHOONER WAY
 PENDER ISLAND BC V0N 2M2

Page: 2 - A
 Total # Pages: 3 (A - C)
 Plus Appendix Pages
 Finalized Date: 12-JAN-2020
 Account: SAXGEO

QC CERTIFICATE OF ANALYSIS VA19314676

Sample Description	Method Analyte Units LOD	ME-MS81 Ba ppm	ME-MS81 Ce ppm	ME-MS81 Cr ppm	ME-MS81 Cs ppm	ME-MS81 Dy ppm	ME-MS81 Er ppm	ME-MS81 Eu ppm	ME-MS81 Ga ppm	ME-MS81 Gd ppm	ME-MS81 Hf ppm	ME-MS81 Ho ppm	ME-MS81 La ppm	ME-MS81 Lu ppm	ME-MS81 Nb ppm	ME-MS81 Nd ppm
STANDARDS																
AMIS0085		368	75.7	550	3.91	11.30	8.82	0.91	13.5	7.11	4.6	2.59	38.5	1.37	10.6	28.9
Target Range - Lower Bound																
Upper Bound																
AMIS0286																
Target Range - Lower Bound																
Upper Bound																
AMIS0304		2650	8400	90	0.39	138.0	34.7	145.0	49.1	345	26.4	17.85	3460	2.02	>2500	4100
Target Range - Lower Bound		2340	7280	70	0.35	119.0	30.6	135.0	47.8	309	25.1	16.20	3250	1.84	4670	3610
Upper Bound		2860	8900	120	0.45	145.5	37.4	165.0	58.7	377	30.9	19.80	3970	2.27	>2500	4410
AMIS0461																
Target Range - Lower Bound																
Upper Bound																
OREAS-101b		186.0	1380	30	2.30	31.7	18.75	7.39	26.3	34.3	10.3	6.39	800	2.42	56.5	389
Target Range - Lower Bound			1200			28.8	16.80	6.97		32.4		5.70	710	2.31		340
Upper Bound			1465			35.4	20.6	8.57		39.7		6.98	868	2.85		416
SRM88B		5.0	4.3	<10	0.15	0.65	0.45	0.09	0.4	0.55	<0.2	0.13	5.4	0.05	0.3	3.4
Target Range - Lower Bound																
Upper Bound																
BLANKS																
BLANK																
Target Range - Lower Bound																
Upper Bound																
BLANK		0.9	0.1	<10	<0.01	<0.05	<0.03	<0.03	0.2	<0.05	<0.2	<0.01	0.1	<0.01	<0.2	0.1
Target Range - Lower Bound		<0.5	<0.1	<10	<0.01	<0.05	<0.03	<0.02	<0.1	<0.05	<0.1	<0.01	<0.1	<0.01	<0.1	<0.1
Upper Bound		1.0	0.2	20	0.02	0.10	0.06	0.04	0.2	0.10	0.2	0.02	0.2	0.02	0.2	0.2



ALS Canada Ltd.
 2103 Dollarton Hwy
 North Vancouver BC V7H 0A7
 Phone: +1 (604) 984 0221 Fax: +1 (604) 984 0218
 www.alsglobal.com/geochemistry

To: SAXIFRAGE GEOLOGICAL SERVICES LTD.
 47312 SCHOONER WAY
 PENDER ISLAND BC V0N 2M2

Page: 2 - B
 Total # Pages: 3 (A - C)
 Plus Appendix Pages
 Finalized Date: 12-JAN-2020
 Account: SAXGEO

QC CERTIFICATE OF ANALYSIS VA19314676

Sample Description	Method Analyte Units LOD	ME-MS81 Pr ppm 0.02	ME-MS81 Rb ppm 0.2	ME-MS81 Sm ppm 0.03	ME-MS81 Sn ppm 1	ME-MS81 Sr ppm 0.1	ME-MS81 Ta ppm 0.1	ME-MS81 Tb ppm 0.01	ME-MS81 Th ppm 0.05	ME-MS81 Tm ppm 0.01	ME-MS81 U ppm 0.05	ME-MS81 V ppm 5	ME-MS81 W ppm 1	ME-MS81 Y ppm 0.1	ME-MS81 Yb ppm 0.03	ME-MS81 Zr ppm 2
STANDARDS																
AMIS0085		8.47	222	7.04	3	102.0	2.4	1.51	50.4	1.42	249	35	2	70.5	9.31	157
Target Range - Lower Bound																
Upper Bound																
AMIS0286																
Target Range - Lower Bound																
Upper Bound																
AMIS0304		>1000	10.6	603	24	3450	12.2	33.9	406	3.54	22.6	388	6	409	17.05	1140
Target Range - Lower Bound		925	9.3	543	22	3060	11.1	30.8	406	3.14	21.6	331	3	369	15.25	1005
Upper Bound		>1000	11.8	664	29	3740	13.8	37.7	496	3.86	26.5	415	7	451	18.75	1230
AMIS0461																
Target Range - Lower Bound																
Upper Bound																
OREAS-101b		126.5	179.0	49.0	9	21.3	3.5	5.11	33.3	2.71	368	75	19	168.0	17.30	394
Target Range - Lower Bound		114.5		43.2				4.82	32.7	2.38	348	66		160.0		
Upper Bound		139.5		52.8				5.92	40.1	2.94	426	94		196.0		
SRM88B		0.91	3.0	0.56	<1	63.0	0.3	0.09	0.30	0.05	0.34	<5	1	7.9	0.30	6
Target Range - Lower Bound																
Upper Bound																
BLANKS																
BLANK																
Target Range - Lower Bound																
Upper Bound																
BLANK		<0.03	<0.2	0.03	<1	0.1	0.2	<0.01	<0.05	0.01	<0.05	<5	1	<0.1	<0.03	<2
Target Range - Lower Bound		<0.02	<0.2	<0.03	<1	<0.1	<0.1	<0.01	<0.05	<0.01	<0.05	<5	<1	<0.1	<0.03	<2
Upper Bound		0.04	0.4	0.06	2	0.2	0.2	0.02	0.10	0.02	0.10	10	2	0.2	0.06	4

***** See Appendix Page for comments regarding this certificate *****



ALS Canada Ltd.
 2103 Dollarton Hwy
 North Vancouver BC V7H 0A7
 Phone: +1 (604) 984 0221 Fax: +1 (604) 984 0218
 www.alsglobal.com/geochemistry

To: SAXIFRAGE GEOLOGICAL SERVICES LTD.
 47312 SCHOONER WAY
 PENDER ISLAND BC V0N 2M2

Page: 2 - C
 Total # Pages: 3 (A - C)
 Plus Appendix Pages
 Finalized Date: 12-JAN-2020
 Account: SAXGEO

QC CERTIFICATE OF ANALYSIS VA19314676

Sample Description	Method Analyte Units LOD	ME-ICP06	ME-ICP06	ME-ICP06	ME-ICP06	ME-ICP06	ME-ICP06	ME-ICP06	ME-ICP06	ME-ICP06	ME-ICP06	ME-ICP06	ME-ICP06	ME-ICP06	ME-ICP06	OA-GRA05	TOT-ICP06
		SiO2 %	Al2O3 %	Fe2O3 %	CaO %	MgO %	Na2O %	K2O %	Cr2O3 %	TiO2 %	MnO %	P2O5 %	SrO %	BaO %	LOI %	Total %	
		0.01	0.01	0.01	0.01	0.01	0.01	0.01	0.002	0.01	0.01	0.01	0.01	0.01	0.01	0.01	0.01
STANDARDS																	
AMIS0085		71.2	10.95	3.46	3.26	1.71	1.76	4.66	0.079	0.21	0.06	0.08	0.01	0.04			100.02
Target Range - Lower Bound		69.0	10.60	3.33	3.12	1.64	1.62	4.48	0.068	0.18	0.04	0.05	<0.01	0.02			97.99
Upper Bound		72.1	11.35	3.67	3.44	1.86	1.84	4.90	0.090	0.24	0.09	0.10	0.03	0.06			>102.00
AMIS0286																7.59	
Target Range - Lower Bound																7.25	
Upper Bound																8.03	
AMIS0304		12.25	1.51	21.5	28.3	2.80	0.10	0.27	0.012	1.77	0.45	18.30	0.42	0.28			95.70
Target Range - Lower Bound		11.90	1.42	20.3	27.7	2.72	0.06	0.25	0.005	1.69	0.41	17.80	0.36	0.25			
Upper Bound		12.75	1.62	21.6	29.3	3.02	0.12	0.31	0.016	1.91	0.51	18.90	0.44	0.31			
AMIS0461																38.9	
Target Range - Lower Bound																36.9	
Upper Bound																40.9	
OREAS-101b		62.0	10.30	15.00	1.59	2.01	0.07	2.79	0.004	0.64	0.12	0.27	<0.01	0.02			94.81
Target Range - Lower Bound																	
Upper Bound																	
SRM88B		1.16	0.34	0.29	30.4	21.1	0.02	0.10	<0.002	0.02	0.01	0.01	<0.01	<0.01			100.15
Target Range - Lower Bound		1.05	0.30	0.24	29.1	20.4	<0.01	0.08	<0.002	<0.01	<0.01	<0.01	<0.01	<0.01			97.99
Upper Bound		1.21	0.37	0.31	30.8	21.7	0.05	0.13	0.006	0.04	0.04	0.03	0.03	0.03			>102.00
BLANKS																	
BLANK																	-0.02
Target Range - Lower Bound																	<0.01
Upper Bound																	0.02
BLANK		<0.01	0.01	<0.01	<0.01	<0.01	<0.01	<0.01	<0.002	<0.01	<0.01	<0.01	<0.01	<0.01			0.01
Target Range - Lower Bound		<0.01	<0.01	<0.01	<0.01	<0.01	<0.01	<0.01	<0.002	<0.01	<0.01	<0.01	<0.01	<0.01			
Upper Bound		0.02	0.02	0.02	0.02	0.02	0.02	0.02	0.004	0.02	0.02	0.02	0.02	0.02			



ALS Canada Ltd.
 2103 Dollarton Hwy
 North Vancouver BC V7H 0A7
 Phone: +1 (604) 984 0221 Fax: +1 (604) 984 0218
 www.alsglobal.com/geochemistry

To: SAXIFRAGE GEOLOGICAL SERVICES LTD.
 47312 SCHOONER WAY
 PENDER ISLAND BC V0N 2M2

Page: 3 - A
 Total # Pages: 3 (A - C)
 Plus Appendix Pages
 Finalized Date: 12-JAN-2020
 Account: SAXGEO

QC CERTIFICATE OF ANALYSIS VA19314676

Sample Description	Method Analyte Units LOD	ME-MS81 Ba ppm 0.5	ME-MS81 Ce ppm 0.1	ME-MS81 Cr ppm 10	ME-MS81 Cs ppm 0.01	ME-MS81 Dy ppm 0.05	ME-MS81 Er ppm 0.03	ME-MS81 Eu ppm 0.02	ME-MS81 Ga ppm 0.1	ME-MS81 Gd ppm 0.05	ME-MS81 Hf ppm 0.1	ME-MS81 Ho ppm 0.01	ME-MS81 La ppm 0.1	ME-MS81 Lu ppm 0.01	ME-MS81 Nb ppm 0.1	ME-MS81 Nd ppm 0.1
DUPLICATES																
ORIGINAL		402	42.8	30	1.26	2.52	1.34	0.70	17.2	3.00	5.2	0.45	21.8	0.20	6.3	17.9
DUP		407	43.4	40	1.20	2.50	1.42	0.69	16.8	2.89	5.3	0.46	22.2	0.19	6.5	19.1
Target Range - Lower Bound		384	40.8	20	1.16	2.33	1.28	0.64	16.1	2.75	4.9	0.42	20.8	0.18	6.0	17.5
Upper Bound		425	45.4	50	1.30	2.69	1.48	0.75	18.0	3.14	5.6	0.49	23.2	0.21	6.8	19.5
ORIGINAL																
DUP																
Target Range - Lower Bound																
Upper Bound																

***** See Appendix Page for comments regarding this certificate *****



ALS Canada Ltd.
 2103 Dollarton Hwy
 North Vancouver BC V7H 0A7
 Phone: +1 (604) 984 0221 Fax: +1 (604) 984 0218
 www.alsglobal.com/geochemistry

To: SAXIFRAGE GEOLOGICAL SERVICES LTD.
 47312 SCHOONER WAY
 PENDER ISLAND BC V0N 2M2

Page: 3 - B
 Total # Pages: 3 (A - C)
 Plus Appendix Pages
 Finalized Date: 12-JAN-2020
 Account: SAXGEO

QC CERTIFICATE OF ANALYSIS VA19314676

Sample Description	Method Analyte Units LOD	ME-MS81 Pr ppm 0.02	ME-MS81 Rb ppm 0.2	ME-MS81 Sm ppm 0.03	ME-MS81 Sn ppm 1	ME-MS81 Sr ppm 0.1	ME-MS81 Ta ppm 0.1	ME-MS81 Tb ppm 0.01	ME-MS81 Th ppm 0.05	ME-MS81 Tm ppm 0.01	ME-MS81 U ppm 0.05	ME-MS81 V ppm 5	ME-MS81 W ppm 1	ME-MS81 Y ppm 0.1	ME-MS81 Yb ppm 0.03	ME-MS81 Zr ppm 2
	DUPLICATES															
ORIGINAL		4.73	80.9	3.52	2	36.8	0.8	0.44	5.15	0.20	1.31	72	2	12.9	1.17	205
DUP		4.80	81.0	3.44	2	36.9	1.1	0.44	5.09	0.20	1.28	71	2	12.7	1.29	206
Target Range - Lower Bound		4.51	76.7	3.28	<1	34.9	0.8	0.41	4.81	0.18	1.18	63	<1	12.1	1.14	193
Upper Bound		5.02	85.2	3.68	3	38.8	1.1	0.47	5.43	0.22	1.41	80	3	13.5	1.32	218
ORIGINAL																
DUP																
Target Range - Lower Bound																
Upper Bound																

***** See Appendix Page for comments regarding this certificate *****



ALS Canada Ltd.
 2103 Dollarton Hwy
 North Vancouver BC V7H 0A7
 Phone: +1 (604) 984 0221 Fax: +1 (604) 984 0218
 www.alsglobal.com/geochemistry

To: SAXIFRAGE GEOLOGICAL SERVICES LTD.
 47312 SCHOONER WAY
 PENDER ISLAND BC V0N 2M2

Page: 3 - C
 Total # Pages: 3 (A - C)
 Plus Appendix Pages
 Finalized Date: 12-JAN-2020
 Account: SAXGEO

QC CERTIFICATE OF ANALYSIS VA19314676

		ME-ICP06	ME-ICP06	ME-ICP06	ME-ICP06	ME-ICP06	ME-ICP06	ME-ICP06	ME-ICP06	ME-ICP06	ME-ICP06	ME-ICP06	ME-ICP06	ME-ICP06	OA-GRA05	TOT-ICP06
Method Analyte Units		SiO2	Al2O3	Fe2O3	CaO	MgO	Na2O	K2O	Cr2O3	TiO2	MnO	P2O5	SrO	BaO	LOI	Total
LOD		0.01	0.01	0.01	0.01	0.01	0.01	0.01	0.002	0.01	0.01	0.01	0.01	0.01	0.01	0.01
Sample Description																
DUPLICATES																
ORIGINAL		69.1	14.05	6.43	0.97	1.66	0.35	3.08	0.004	0.55	0.14	0.13	<0.01	0.04		
DUP		67.9	13.85	6.33	0.96	1.64	0.35	3.05	0.005	0.55	0.14	0.12	<0.01	0.04		
Target Range - Lower Bound		66.8	13.60	6.21	0.93	1.60	0.33	2.98	<0.002	0.53	0.13	0.11	<0.01	0.03		
Upper Bound		70.2	14.30	6.55	1.00	1.70	0.37	3.15	0.007	0.57	0.15	0.14	0.02	0.05		
ORIGINAL																0.97
DUP																1.00
Target Range - Lower Bound																0.95
Upper Bound																1.02

***** See Appendix Page for comments regarding this certificate *****



ALS Canada Ltd.
2103 Dollarton Hwy
North Vancouver BC V7H 0A7
Phone: +1 (604) 984 0221 Fax: +1 (604) 984 0218
www.alsglobal.com/geochemistry

To: SAXIFRAGE GEOLOGICAL SERVICES LTD.
47312 SCHOONER WAY
PENDER ISLAND BC V0N 2M2

Page: Appendix 1
Total # Appendix Pages: 1
Finalized Date: 12-JAN-2020
Account: SAXGEO

QC CERTIFICATE OF ANALYSIS VA19314676

CERTIFICATE COMMENTS

LABORATORY ADDRESSES

Applies to Method:	Processed at ALS Vancouver located at 2103 Dollarton Hwy, North Vancouver, BC, Canada.			
	CRU-31	CRU-QC	DISP-01	LOG-21
	ME-ICP06	ME-MS81	OA-GRA05	PUL-31
	PUL-QC	SPL-21	TOT-ICP06	WEI-21