



ASSESSMENT REPORT TITLE PAGE AND SUMMARY

TITLE OF REPORT: Geological & Geochemical on the Cariboo Property (Frank, Ace & Black Bear East Areas), Cariboo Mining Division, British Columbia

TOTAL COST: \$21,782.00

AUTHOR(S): Rein Turna

SIGNATURE(S): "SIGNED"

NOTICE OF WORK PERMIT NUMBER(S)/DATE(S): MX-10-155 & MX-10-228

STATEMENT OF WORK EVENT NUMBER(S)/DATE(S): 5775261 – (August 15, 2019 to February 23, 2020), 5775263 - (September 15, 2019 - February 22, 2020) and 5775262 - (September 1, 2019 - February 23, 2020)

YEAR OF WORK: 2019 & 2020

PROPERTY NAME: Cariboo Property (Frank, Ace and Black Bear East Areas)

CLAIM NAME(S) (on which work was done)

Ace Property (tenure # 1070161), Frank Property (tenure # 1070162) & Black Bear East Property (tenure # 1070173)

COMMODITIES SOUGHT: Copper, Lead, Zinc, Silver & Gold

MINERAL INVENTORY MINFILE NUMBER(S), IF KNOWN: N/K

MINING DIVISION: Cariboo

BCGS: 93A/11 and 93A/14

LATITUDE 52.66°

LONGITUDE 121.43°

UTM Zone NAD 83 EASTING 605900 NORTHING 5835200

OWNER(S): Barker Minerals Ltd.

MAILING ADDRESS: 17970 Lacasse Rd., Prince George BC, V2K 5T4

OPERATOR(S) [who paid for the work]: Barker Minerals Ltd.

MAILING ADDRESS: 17970 Lacasse Rd., Prince George BC, V2K 5T4

REPORT KEYWORDS (lithology, age, stratigraphy, structure, alteration, mineralization, size and attitude do not use abbreviations or codes)

Barkerville Terrane, Silver & Gold

REFERENCES TO PREVIOUS ASSESSMENT WORK AND ASSESSMENT REPORT NUMBERS

9669, 9677, 10252, 10264, 11620, 13154, 15420, 15804, 17696, 19354, 21930, 22599, 22642, 24662, 25752, 26003, 26504, 26805, 27125, 27655, 28248, 28978, 29740, 30764.

TYPE OF WORK IN THIS REPORT	EXTENT OF WORK (in metric units)	ON WHICH CLAIMS	PROJECT COSTS APPORTIONED (incl. support)
GEOLOGICAL (scale, area)			
Ground, mapping	N/A		
Photo interpretation	N/A		
GEOFYSICAL (line-kilometres)			
Ground	N/A		
Magnetic	N/A		
Electromagnetic	N/A		
Induced Polarization	N/A		
Radiometric	N/A		
Seismic	N/A		
Other	N/A		
Airborne	N/A		
GEOCHEMICAL (number of samples analysed for ...)			
Soil	N/A		
Silt	N/A		
Rock	36	1070161	\$ 2,461.92
	33	1070162	\$ 2,297.77
	36	1070173	\$ 4,292.57
Other	N/A		
DRILLING (total metres, number of holes, size, storage location)			
Core	N/A		
Non-core	N/A		
RELATED TECHNICAL			
Sampling / Assaying	36	1070161	\$ 3,462.08
	33	1070162	\$ 3,231.23
	36	1070173	\$ 6,036.43
Petrographic	N/A		
Mineralographic	N/A		
Metallurgic	N/A		
PROSPECTING (scale/area)	N/A		
PREPARATORY / PHYSICAL			
Line/grid (km)	N/A		
Topo/Photogrammetric (scale, area)	N/A		
Legal Surveys (scale, area)	N/A		
Road, local access (km)/trail	N/A		
Trench (number/metres)	N/A		
Underground development (metres)	N/A		
Other	N/A		
TOTAL COST			\$ 21,782.00

**GEOLOGICAL and GEOCHEMICAL
ASSESSMENT REPORT**

on the

**CARIBOO PROPERTY -
(Frank, Ace & Black Bear East Areas)**

Cariboo Mining Division, British Columbia

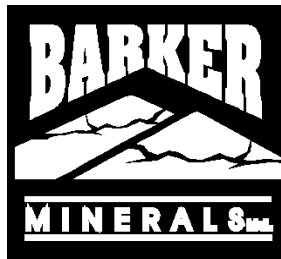
Work was concentrated in the area of tenure nos. 1070161, 1070162, 1070173

The geographic coordinates of the approximate centre of the property are:

52.66° North Latitude and 121.43° West Longitude or
605900 E and 5835200 N UTM coordinates (NAD 83)

The relevant map is:

N.T.S. Map No's. 93A/11 & 93A/14



for
Barker Minerals Ltd.
17970 Lacasse Rd.
Prince George, B.C.
V2K 5T4

Prepared by:
Rein Turna

June 10, 2020

1.0 SUMMARY

Work performed during 2019 and 2020 on Barker Minerals Ltd.'s Cariboo Property consisted of rock sampling in the widely separated Frank, Ace and Black Bear East Areas. All of the samples collected were analysed for 28 elements. At the Frank Area, 33 rock samples were analysed. One of the rock samples there had a high value (12.25 ppm) in Au. This was accompanied by high values in the pathfinder elements Zn and Cu of over 900 ppm. At the Ace Area, 36 float rock samples were analysed. One of the rock samples there had a high value (13.82 ppm) in Au but no significant high results in other elements. At the Black Bear East Area, 36 float rock samples were analysed. There were no significant high results in these samples.

A compilation of the extensive work histories in Frank Creek, Ace and Black Bear East Areas. Further comprehensive exploration including rock and soil sampling should be done over the Cariboo claimgroup.

TABLE OF CONTENTS

	Page
1.0 SUMMARY	i
2.0 INTRODUCTION	1
3.0 PROPERTY DESCRIPTION and LOCATION	1
4.0 MINERAL CLAIMS	2
5.0 PHYSIOGRAPHY and ACCESSIBILITY	4
6.0 HISTORY	6
7.0 GEOLOGY	6
7.1 Regional Geology	6
Quesnel Terrane	10
Slide Mountain Terrane	11
Barkerville Terrane	11
Cariboo Terrane	12
Glaciation and Glacial Deposits	12
7.2 Geology at Cariboo Lake and Frank Area	13
7.3 Local Geology at Ace Area	15
7.4 Local Geology at Black Bear East Area	15
8.0 EXPLORATION PROGRAM - 2019 & 2020	16
8.1 Sampling Method and Approach	16
8.2 Economic Targets and Work Done	16
9.0 CONCLUSIONS and RECOMMENDATIONS	17

LIST of FIGURES

	Page
Figure No. 1 Cariboo Lake Property location in British Columbia	3
Figure No. 2 Barker Minerals Ltd. Mineral Claims	after pg. 3
Figure No. 3 Access Roads from Likely to several of Barker Minerals' properties	5
Figure No. 4 Terrane Map of Southern British Columbia	7
Figure No. 5 Terrane Map of Cariboo Lake – Wells Area	8
Figure No. 6 Geology of Wells-Cariboo Lake area	9
Figure No. 7 Schematic Regional Structural Section	10
Figure No. 8 Geology and Stratigraphy of the Snowshoe Group	14
Figure No. 9 Cariboo Property - Keymap	in Appendix G
Figure No. 10 Frank Area - Sample Locations., Zn, Cu Geochem	in Appendix G
Figure No. 11 Ace Area - Sample Locations., Zn, Cu Geochem	in Appendix G
Figure No. 12 Black Bear East Area - Sample Locations., Zn, Cu Geochem	in Appendix G

LIST of TABLES

Table No. 1	Mineral Claims Details	_____	pg. 2
Table No. 2	Cariboo Lake Project Sample Coordinates and Descriptions	_	in Appendix F
Table No. 3	Frank Area – XRF Rock Sampling Results	_____	after Fig. No. 10
Table No. 4	Ace Area – XRF Rock Sampling Results	_____	after Fig. No. 11
Table No. 5	Black Bear East Area – XRF Rock Sampling Results	_____	after Fig. No. 12

LIST of APPENDIXES

Appendix A	Glossary of Technical Terms and Abbreviations
Appendix B	Analytical Methods
Appendix C	References
Appendix D	Statements of Qualifications
Appendix E	Statement of Expenditures
Appendix F	Rock Samples Coordinates and Descriptions
Appendix G	Frank, Ace and Black Bear East Geochem Maps and XRF Data Tables

2.0 INTRODUCTION

This report describes assessment work performed in 2019 and 2020 on Barker Minerals Ltd.'s Cariboo Property contiguous group of mineral properties. The work was concentrated in three areas:

Frank Area on tenure no. 1070162

Ace Area on tenure no. 1070161

Black Bear East Area on tenure no. 1070173

Rock samples were analyzed by X-ray fluorescence (XRF) for twenty-eight elements. The purpose was to add geochemical information to the existing database for the claim group and to identify potential mineralized lithologic horizons in an on-going mineral exploration program.

Definitions of technical terms used in this report are provided in Appendix A, Glossary of Technical Terms and Abbreviations. Chemical abbreviations are used for the elements discussed. The elements and abbreviations are also in the Glossary:

3.0 PROPERTY DESCRIPTION and LOCATION

The Cariboo Property consists of contiguous claims listed in Table No. 1 Mineral Claims Details. The Cariboo Property's location in British Columbia is indicated in Figure No. 1 – Cariboo Property Location in British Columbia, and the mineral claims are outlined in Figure No. 2 – Barker Minerals Ltd. Cariboo Lake Property. The mineral claims comprising the property are located generally in the area between Quesnel and Cariboo Lakes in the Cariboo Mining Division in British Columbia and are 100% owned by Barker Minerals Ltd. of Prince George, B.C. The Property is approximately 15 km northeast of the community of Likely and 90 km northeast the City of Williams Lake. The City of Prince George is 155 km to the north.

The geographic coordinates of the approximate centre of the property are:

52.66° North Latitude and 121.43° West Longitude or
605900 E and 5835200 N UTM coordinates (NAD 83).

The relevant maps are:

N.T.S. Map No. 93A/11 and 93A/14.

4.0 MINERAL CLAIMS

<u>Tenure Number</u>	<u>Tenure Name</u>	<u>Owner No.</u>	<u>Owner</u>	<u>Status</u>	<u>Area (ha)</u>
1047784	BK	140410	Barker Minerals Ltd. 100%	Good	39.19
1066778	F BB Bridge	140410	Barker Minerals Ltd. 100%	Good	254.82
1066779	A BB Bridge	140410	Barker Minerals Ltd. 100%	Good	431.99
1070161	Ace	140410	Barker Minerals Ltd. 100%	Good	11127.44
1070162	Rolkang	140410	Barker Minerals Ltd. 100%	Good	6598.75
1070163	Frank	140410	Barker Minerals Ltd. 100%	Good	8786.00
1070173	BBE	140410	Barker Minerals Ltd. 100%	Good	13681.82

Total Area is **40,920.01 ha**

Table No. 1 – Mineral Claim Details, Barker Minerals Ltd. Cariboo Property comprising the Frank, Ace and Black Bear East (BBE) areas and other projects.

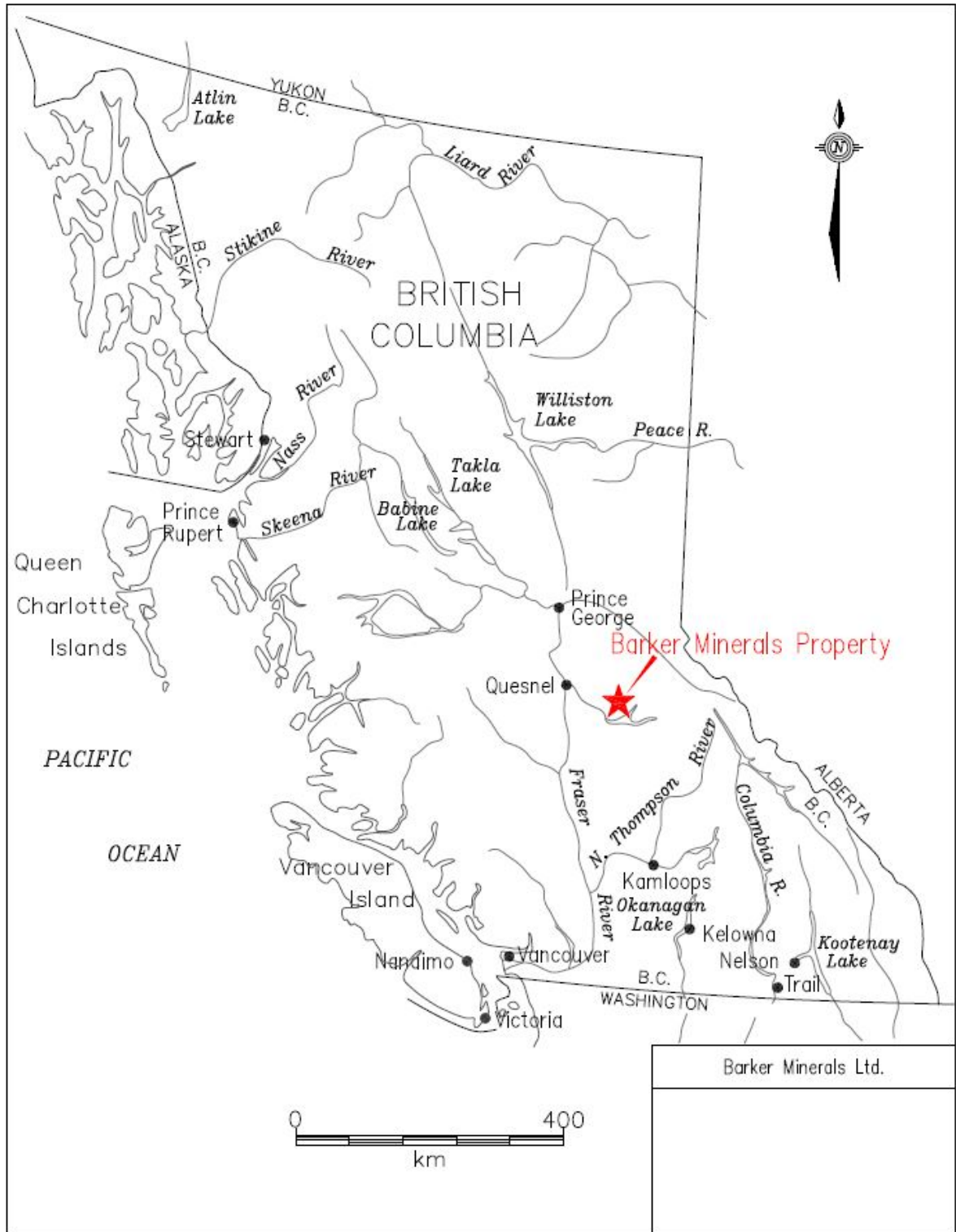


Figure No. 1 Provincial Location Map.

Figure No. 2, next page, illustrates the configuration of Barker Minerals' Cariboo Property claims containing the Frank, Ace and Black Bear East work areas.

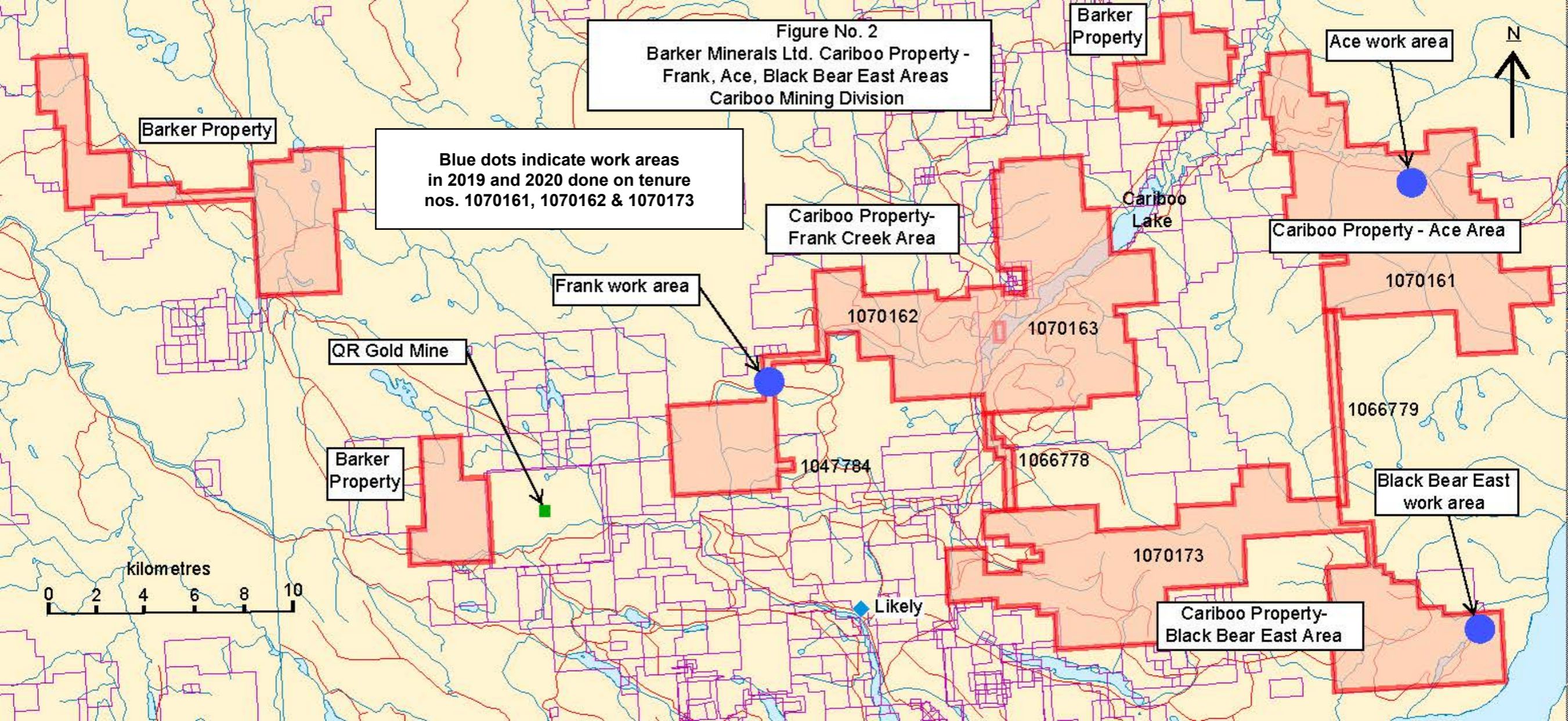


Figure No. 2
Barker Minerals Ltd. Cariboo Property -
Frank, Ace, Black Bear East Areas
Cariboo Mining Division

Blue dots indicate work areas
in 2019 and 2020 done on tenure
nos. 1070161, 1070162 & 1070173

Barker Property

Barker Property

Ace work area



Cariboo Property-
Frank Creek Area

Cariboo
Lake

Cariboo Property - Ace Area

Frank work area

1070161

QR Gold Mine

1070162

1070163

1066779

Barker
Property

1047784

1066778

Black Bear East
work area



1070173

Cariboo Property-
Black Bear East Area

Likely

5.0 PHYSIOGRAPHY and ACCESSIBILITY

The following description in *italics*, is after McKinley, 2004:

The Property is situated in the central part of the Quesnel Highland between the eastern edge of the Interior Plateau and the western foothills of the Columbia Mountains. This area contains rounded mountains that are transitional between the rolling plateaus to the west and the rugged Cariboo Mountains to the east. Pleistocene and Recent ice sheets flowed away from the high mountains to the east over these plateaus and down to the southwest (Cariboo River), west (Little River) and northeast (Quesnel Lake), carving U-shaped valleys. The elevation ranges from 700-1650 m.

Precipitation in the region is heavy, as rain in the summer and snow in the winter. Drainage is to the west via the Cariboo, Little and Quesnel Rivers to the Fraser River. Quesnel Lake, the main scenic and topographic feature in the region, is a deep, long, forked, glacier-carved lake with an outlet at 725 m elevation. Vegetation is old-growth spruce, fir, pine, hemlock and cedar forest in all but the alpine regions of the higher mountains (mainly above 1400 m elevation). Weldwood has been actively logging fir, spruce and pine in the area.

Access to the property is via gravel logging roads bearing northeast from Likely. Figure No. 3 shows access roads from Likely to Cariboo Lake and several of Barker's mineral properties, including Frank, Ace and Black Bear East.

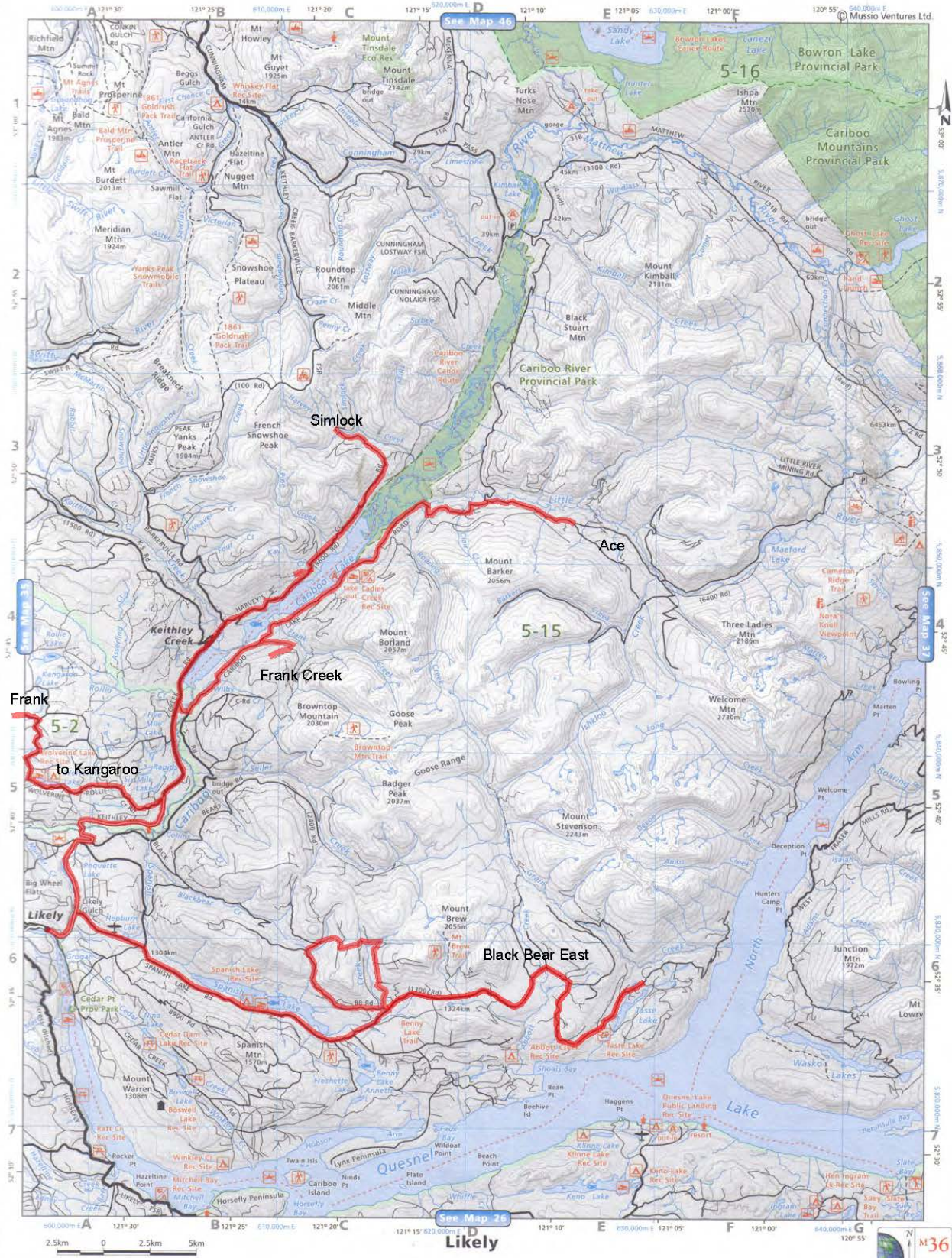


Figure No. 3 Access roads from Lively to several of Barker Minerals' properties.

6.0 HISTORY

The Cariboo Project Area, including the Frank, Ace and Black Bear East (BBE) Areas, has historically had very extensive work over it, including drilling, trenching, soil sampling and geophysical and geological mapping surveys; it would be appropriate to consult the References for an adequate description. Historically, since 1995 Frank Creek has been primarily a volcanogenic massive sulphide (VMS) prospect. The Ace and Black Bear East are primarily veined gold prospects. The Ace property has an extensive exploration work history beginning in 1980. There is no record of any mineral exploration work in the area of the current Ace property prior to 1980. Placer mining for gold was conducted on Black Bear Creek in the early 1900's and earlier.

7.0 GEOLOGY

7.1 Regional Geology

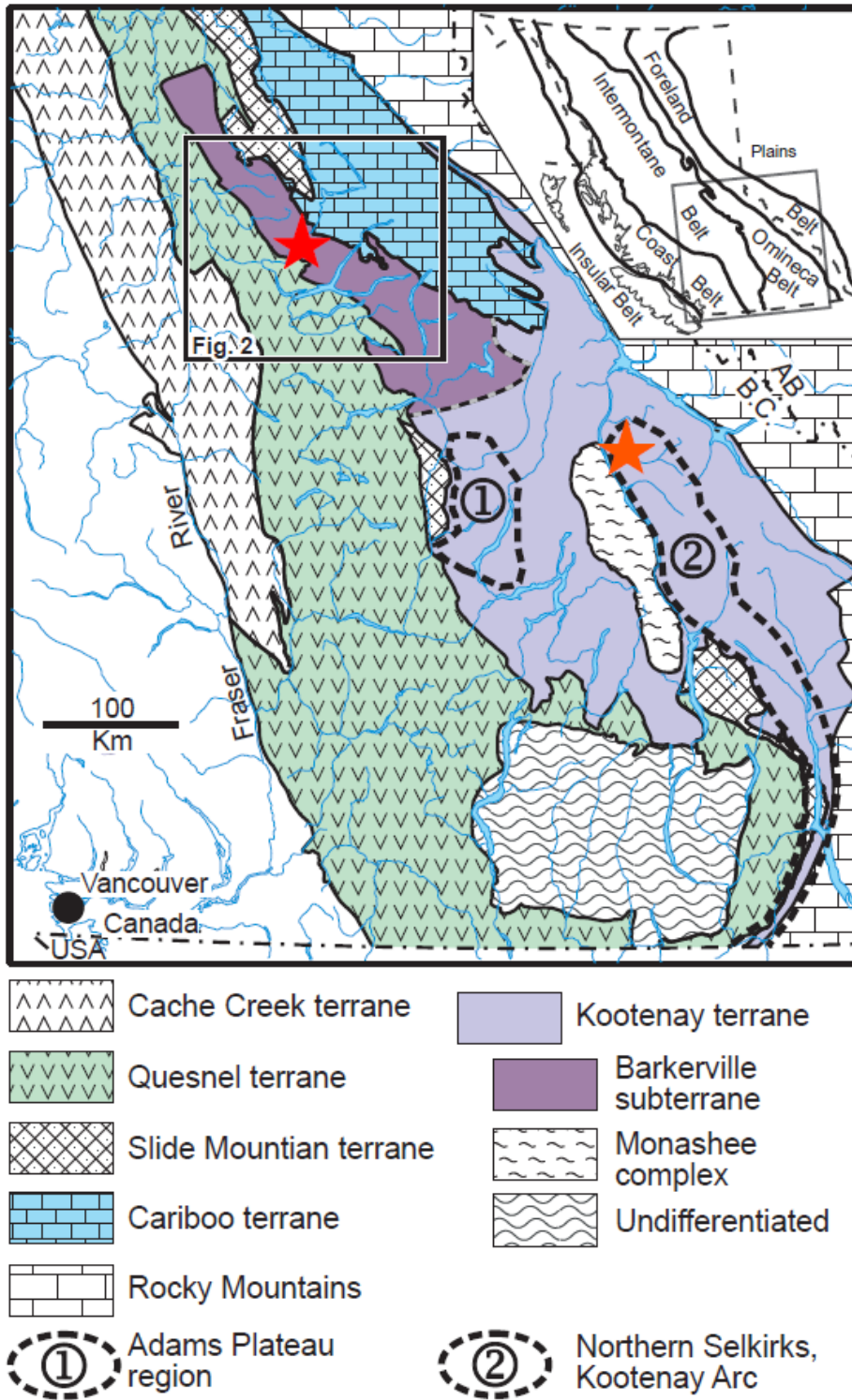
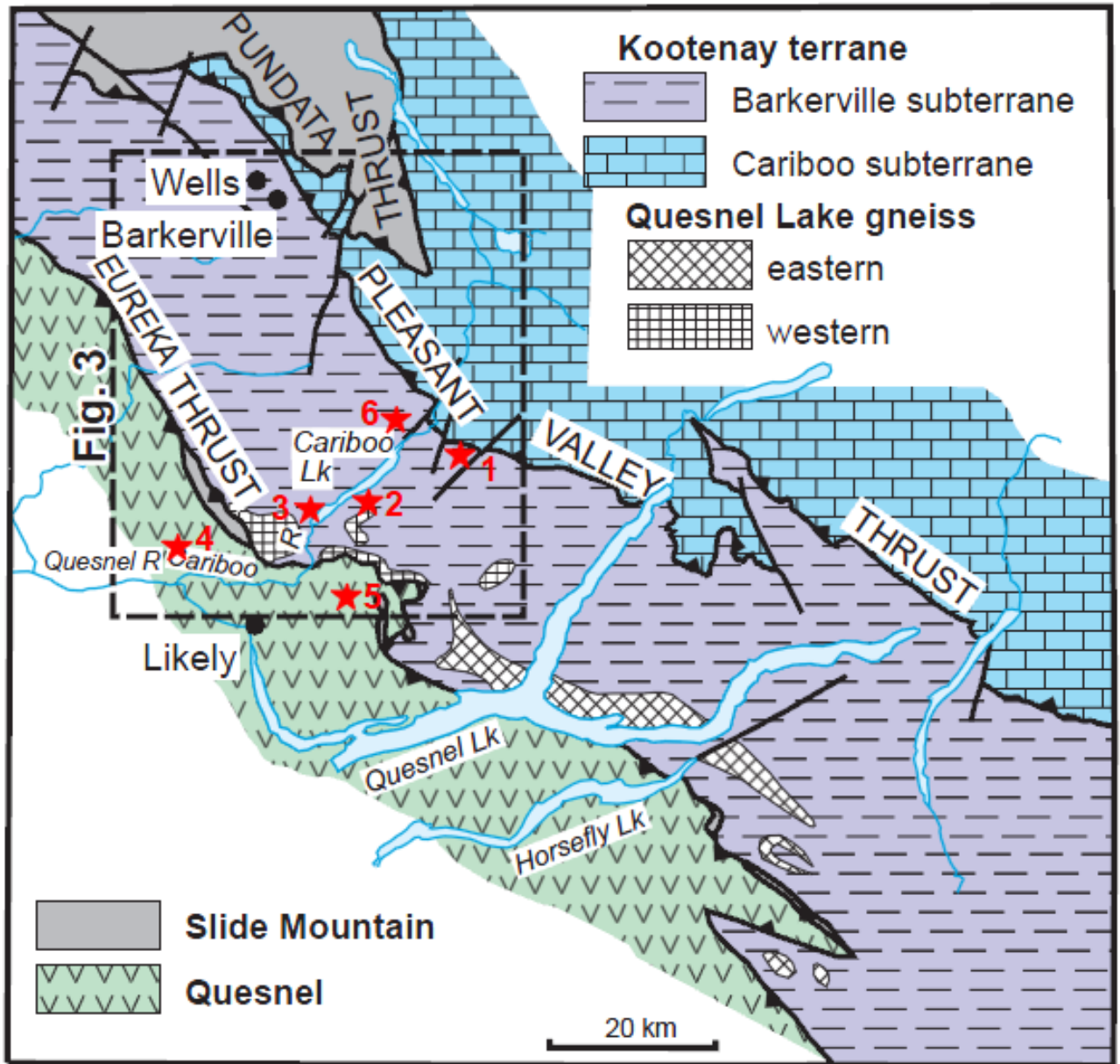


Figure No. 4 Terrane Map of Southern British Columbia. Barker Minerals' properties are indicated by the red star over the Barkerville subterrane. The brown star to the SE is the Barkerville Gold Mine Ltd.' Goldstream volcanogenic massive sulphide deposit. Map is from Ferri, F. & Schiarizza, P., 2006.



- ★1 Ace
- ★2 Frank Ck
- ★3 Unlikely
- ★4 Kangaroo
- ★5 Black Bear East
- ★6 Simlock

Figure No. 5 Terrane Map of Cariboo Lake – Wells Area. Several Barker Minerals' properties are indicated by red stars. Map is from Ferri, F. & Schiarizza, P., 2006.

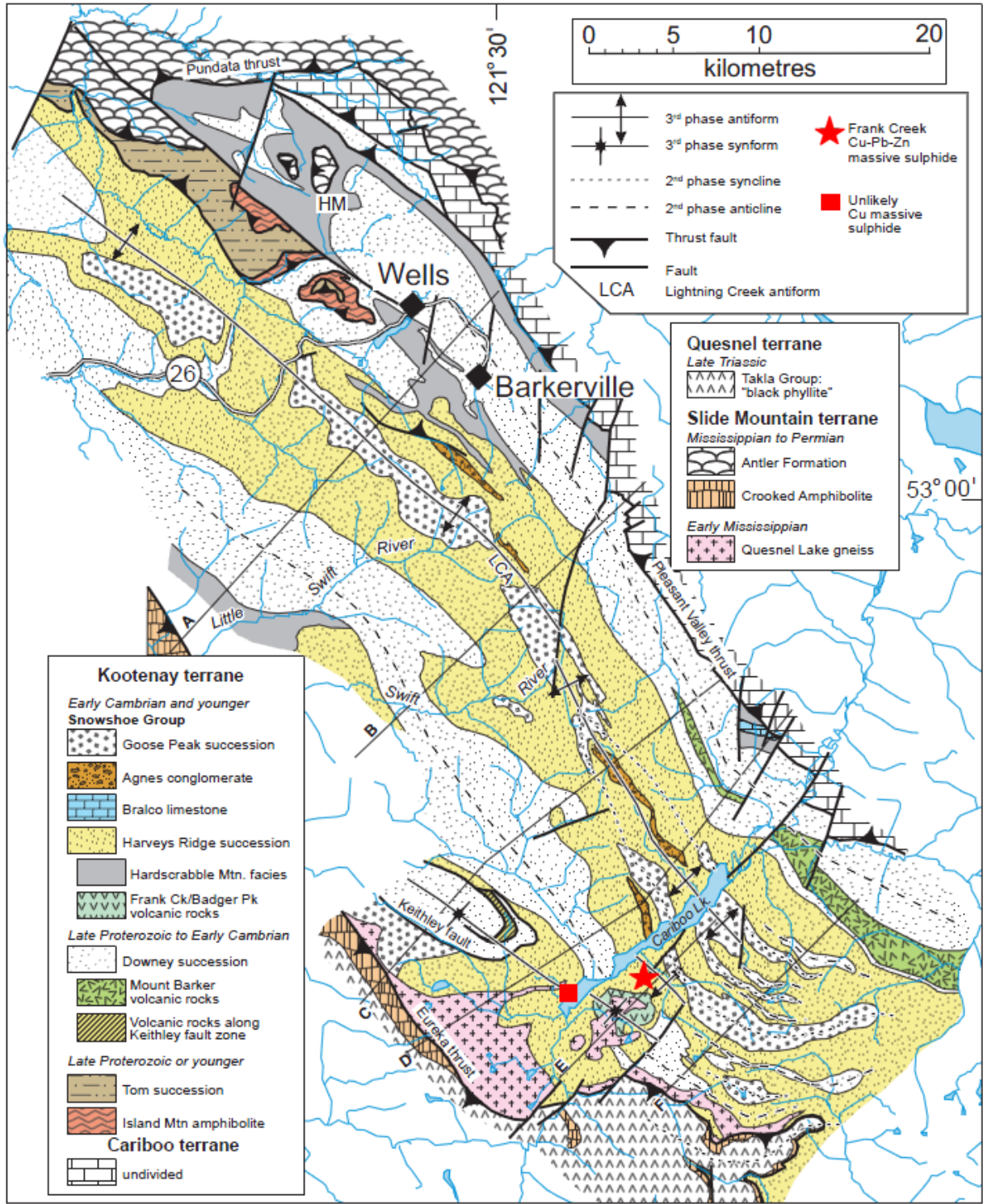


Figure No. 6 Geology of Wells-Cariboo Lake area. Highlighted on the BCGS map are Barker Minerals' Frank Creek and Unlikely massive sulphide prospects. The Harveys Ridge succession consists of siltstone, quartzite and the Frank Creek volcanics. Map is from Ferri, F. & Schiarizza, P., 2006.

The geological descriptions below derive mainly from Struik (1988), Panteleyev et al. (1996) and Payne and Perry (2001).

During the mid-Jurassic the North American continental plate collided with a group of island arcs to the west. Regional deformation and metamorphism are related to these events.

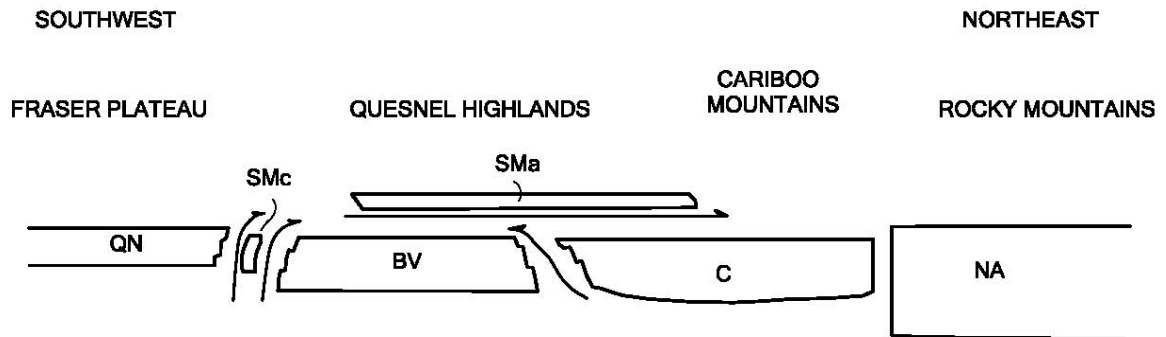


Figure No. 7 Schematic regional structural section from southwest to northeast across the four Terranes in Barker Minerals' claims area, showing the relative structural position of the Terranes. The Terrane symbols are BV-Barkerville, C-Cariboo, Sma-Slide Mountain (Antler Formation), SMc-Slide Mountain (Crooked amphibolite), QN-Quesnel and NA-North American. (after Struik, 1988).

Quesnel Terrane

The Late Triassic to Early Jurassic Quesnel Terrane...was accreted to the North American continent, in part by subduction and in part by obduction. The Eureka Thrust fault marks the boundary between the Quesnel and Barkerville terranes. The Terrane is partly submarine and partly subaerial, consisting of volcanic and volcanoclastic rocks and co-magmatic intrusions, with minor carbonate lenses and related sedimentary rocks.

The principal assemblage in the Quesnel Terrane is the Triassic-Jurassic Nicola Group island arc – marginal basin sequence. The underlying rocks are the Crooked Amphibolite, part of the Slide Mountain assemblage, a mylonitized mafic and ultramafic unit of oceanic marginal basin volcanic and sedimentary rocks. Rocks of Quesnel Terrane and Crooked Amphibolite are structurally coupled and tectonically emplaced by the Eureka Thrust onto the Barkerville Terrane, to the east.

Two lithostratigraphic subdivisions of the Quesnel Terrane consists of: a basal Middle to Late Triassic metasedimentary unit of dominantly black phyllitic rocks, approximately 7 km thick, and an overlying Late Triassic to Early Jurassic volcanic arc assemblage, approximately 9 km thick. The overlying volcanic rocks outline a northwesterly trending belt of subaqueous and subaerial volcanic rocks, deposited along a series of volcanic-intrusive centres that define the Quesnel island arc of predominantly alkalic basalts.

Within...the northern extension of the Quesnel Trough, the term...Takla Group has been applied to rocks identical to the Quesnel belt rocks...Equivalent rocks to the south...are generally referred to as Nicola Group...Baily (1978) pointed out the similarity of the Quesnel volcanic units with both the Nicola Group rocks to the south and the Takla Group rocks to the north...The term Takla leads to ambiguity because in northern British Columbia it has been used for rocks in both Quesnel and Stikine terranes...The usage for the Triassic-Jurassic volcanic arc and related rocks in Quesnellia currently preferred is Nicola Group. The term Takla Group possibly should be discarded... (Panteleyev et al., (1996).

The Quesnel Trough is a well-mineralized region typical of other Late Triassic to Early Jurassic volcano-plutonic island arcs in the Cordillera. It hosts a wide variety of mineral deposits. The principal recent exploration and economic development targets in the central Quesnel belt are alkalic intrusion-related porphyry copper-gold deposits and gold-bearing propylitic alteration zones formed in volcanic rocks peripheral to some of the intrusions. Other important targets are auriferous quartz veins in the black phyllite metasedimentary succession. The veins in some black phyllite members have potential to be mined as large tonnage, low-grade deposits. Tertiary rocks are mineralized with copper and gold. Antimony-arsenic and mercury mineralization in some apparently low temperature quartz-calcite veins indicated the potential for epithermal deposits. Placer mining for gold, said to occur together with platinum, has been of major historical and economic importance.

Slide Mountain Terrane

Rocks of the Devonian to Late Triassic Slide Mountain Terrane were partly obducted, partly subducted during collision of an oceanic plate with the continent. Small slices of mainly mafic volcanic rocks and ultramafic rocks of the Slide Mountain Terrane occur in and parallel to the Eureka thrust. Minor lithologies include chert, meta-siltstone and argillite.

The Crooked Amphibolite, considered to likely be a part of the Slide Mountain Terrane, includes three major constituent rock types: greenstone, metagabbro and meta-ultramafite. North of Quesnel Lake, the map units consist of mafic metavolcanics, amphibolite, chlorite schist, serpentinite, ultramafic rocks and pillow lavas. Chemical analyses indicate subalkaline tholeiitic compositions of basalts formed on the ocean floor. If the Crooked Amphibolite is a sheared and metamorphosed equivalent of the Antler Formation and is part of the Slide Mountain Terrane, it is separated from the underlying Barkerville Terrane by the Eureka Thrust, a wide zone of mylonitization. The Crooked amphibolite and the overlying rocks of Quesnel Terrane are structurally coupled and emplaced tectonically onto Barkerville Terrane.

Barkerville Terrane

The Barkerville Terrane is made up of the Snowshoe Group and Quesnel Lake gneiss. The Snowshoe Group rocks are Upper Proterozoic to Upper Devonian metasediments, considered correlative in age with the Eagle Bay Formation in the Kootenay Terrane to the south. The Snowshoe Group rocks are dominated by varieties of grit, quartzite, pelite,

limestone and volcanoclastic rocks. The stratigraphic sequence is not well understood. The region was deformed by intense, complex, in part isoclinal folding and overturning. Locally, strong shear deformation produced mylonitic textures. The Quesnel Lake Gneiss is a Devonian to Mississippian intrusive unit varying in composition from diorite to granite to syenite. It is generally coarse grained, leucocratic, often with megacrysts of potassium feldspar. The main body of gneiss is 30 km long by 3 km wide and is elongated parallel to the eastern border of the Intermontane belt. Its contacts are in part concordant with, and in part perpendicular to, metamorphic layering.

The contact between the Barkerville Terrane and Cariboo Terrane to the east is the Pleasant Valley Thrust. The Barkerville and Cariboo Terranes were juxtaposed prior to emplacement of the Slide Mountain Terrane which was thrust over both of them. The northeastern third of the Barkerville Terrane is the main zone of economic interest in the Cariboo district. Struik described it as “gold-enriched”, because it contains the historic Wells and Barkerville gold mines and the Cariboo Hudson deposit, approximately 40 km and 20 km northwest of the project area, respectively.

Cariboo Terrane

The northeastern part of Barker Minerals’ ‘Peripheral’ claim group is underlain by Precambrian to Permo-Triassic marine peri-cratonic sedimentary strata of the Cariboo terrane. The Cariboo Terrane consists mainly of limestone and dolomite with lesser siliceous, clastic, sedimentary rocks and argillite. Some geologists believe that the Cariboo Terrane is a shallow, near-shore facies and the Barkerville is a deeper, offshore facies of the same erosion-deposition system. No rifting is suspected between the Cariboo Terrane and the North American continent, in contrast to that between the Barkerville Terrane and the North American continent. Lithologies within the Cariboo Terrane correlate well with parts of the Classier Platform and Selwyn Basin of Yukon and northern British Columbia.

The Cariboo and Barkerville Terranes are separated by the regional Pleasant Valley Thrust fault, which dips moderately to steeply northeast. Struik (1988) states the Cariboo block was thrust from the east over the Barkerville block along a strike length of over 100 km. The Cariboo Terrane was cut by the Jurassic-Cretaceous Little River stock, a medium-grained granodiorite grading to quartz monzonite. Some of the carbonate layers in the lowest part of the Cariboo terrane (or upper part of the Barkerville Terrane) are enriched in zinc and lead. Since the 1970's, preliminary exploration on stratiform Zn-Pb targets has been conducted in this area.

Glaciation and glacial deposits

The last glacial stage that affected the Quesnel Highland, the Fraser glaciation, began 30,000 years ago. Much of this ice had melted by 10,000 years ago, but small remnants are preserved high in the alpine areas of the Cariboo Mountains. At lower elevations, glaciers of this age scoured the debris left by preceding ice advances, almost completely destroying them, leaving a chaotic assemblage of unsorted till, moraine and drift, with lenses of gravel

and sand that had been roughly sorted by melt water and rivers, leaving behind beds of silt and clay that were stratified by settlement in ice-dammed lakes. In the Cariboo area, the debris covers bedrock in valleys below 1,700 m, leaving typical glacial features such as U-shaped valleys, ice-sculpted drumlins, moraine terraces and glacier and river benches. On the Barker Minerals properties, glacial deposits range from one to a few tens of metres thick. Some glacial till deposits are overlain by well-bedded glaciolacustrine clay and silt deposits up to a few tens of metres thick.

In much of the Cariboo district, a layer of distinctive, hard, compact, semi-rigid blue clay sits either on or slightly above bedrock and acts as “false” bedrock. It was formed from glacial drift left behind by the last ice advance prior to the Fraser glaciation and was compacted by the weight of the Fraser stage ice. In the placer-gold areas of the Cariboo, large amounts of gold were recovered from gravel resting on this clay. In places the clay layer was penetrated by the placer miners to reach richer “pay streaks” on true bedrock below.

7.2 Geology at Cariboo Lake and Frank Area

Figure No. 8, next page, presents the broad-scale geology and stratigraphy of the Cariboo Lake project area. Work by Struik (1983), Ferri (2001) and Ferri and O’Brien (2002) placed the rocks of Barker’s project areas in the Snowshoe Group of the Barkerville terrane. These rocks include, from oldest to youngest, the Keithley succession, Harvey’s Ridge succession and Goose Peak quartzite.

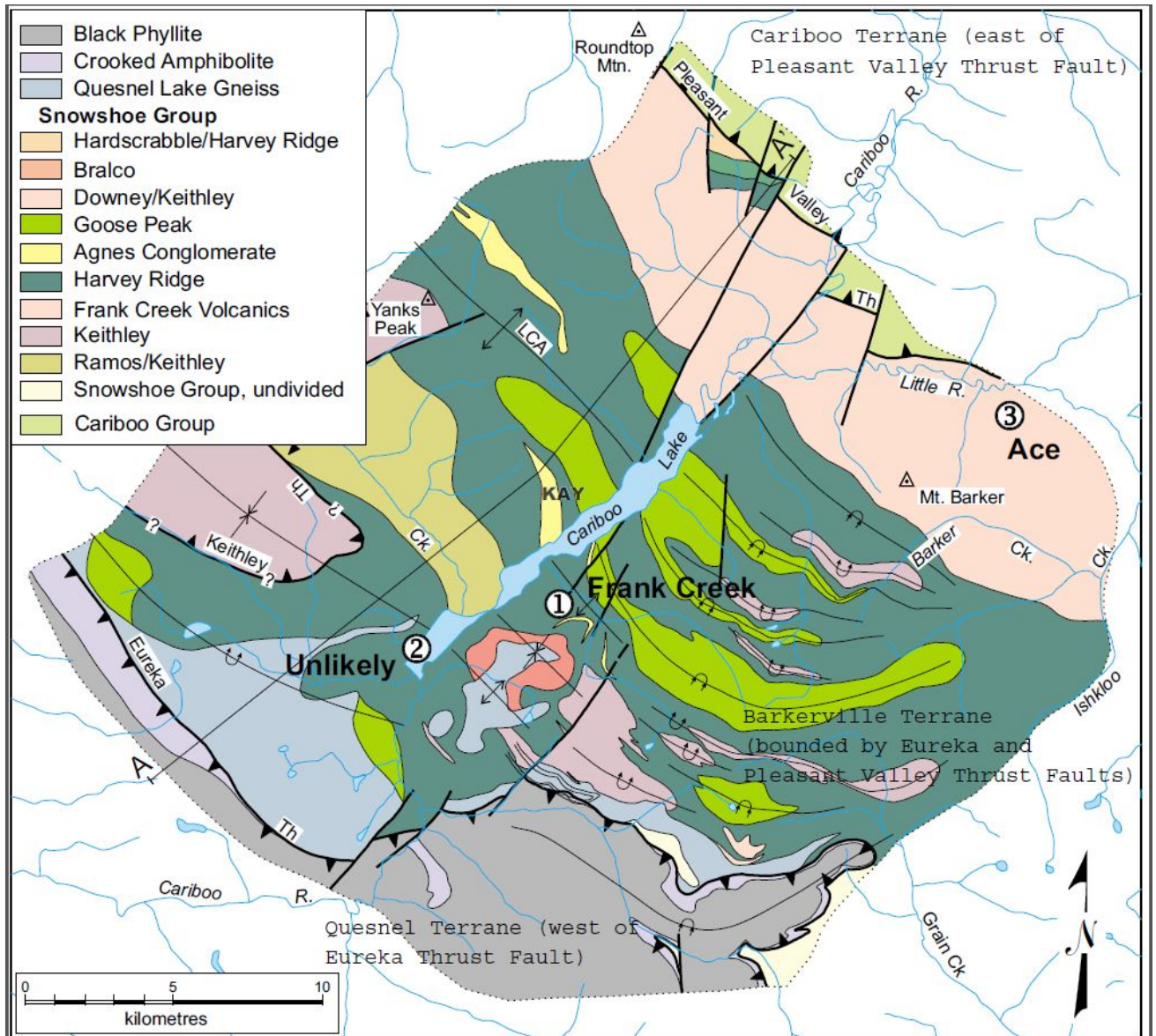


Figure No. 8 Geology and Stratigraphy of the Snowshoe Group. Barker Minerals' Ace, Unlikely and Frank Creek mineral prospects within the Cariboo Lake project are indicated on this BC Government map. Several of Barker Minerals' properties, Frank Creek, Unlikely and Ace are indicated.

7.3 Local Geology at Ace Area

The Ace property, and Little River area in general, are situated on the Barkerville Terrane which is in fault contact with the Cariboo Terrane to the northeast. The property is underlain by the Palaeozoic Downey succession of the Snowshoe Group. The Downey succession consists of micaceous quartzite, phyllite and schist, with some marble and amphibolite.

The Ace property is underlain by a sequence of metamorphosed and strongly deformed sedimentary and possibly intermediate volcanic rocks. The most prevalent lithologies are quartz-feldspar-muscovite-chlorite±biotite±garnet-bearing schists. Notable as well, is a thick, pyrite and pyrrhotite-rich graphitic layer. Black, locally graphitic phyllites, containing pyrite and pyrrhotite, occur on lower slopes. Calcareous argillite, quartzite and limestone are also present but are poorly exposed.

All rock formations in the area have experienced greenschist facies metamorphism. Metamorphic grade increases toward the southeast. All the rocks show at least one foliation or pervasive cleavage. The original bedding is rarely evident and relationships between units are difficult to determine.

7.4 Local Geology at Black Bear East Area

The western portion of the Black Bear East area, near Blackbear Creek and Spanish Lake, is underlain by dark sedimentary rocks and chloritic mafic volcanics. Barker Minerals is exploring the Black Bear East property for Au-quartz veins and polymetallic veins. The possibility of stratigraphically controlled disseminated gold mineralization (similar to the Spanish Mountain Gold Ltd. project 5.0 km to the southwest) is also considered. The economic target at Black Bear East is high grade Ag ± Au in quartz-galena veins hosted in sedimentary rocks.

The eastern portion of the Black Bear East area, near Tasse Lake, is situated on the Barkerville Terrane of the western cordillera off the North American craton. The rock units in this area are termed by the British Columbia Geological Survey (BCGS) MapPlace digital geology map as:

DMQ – (Devonian to Mississippian Quesnel Lake Gneiss).

The Quesnel Lake Gneiss is a Devonian to Mississippian intrusive unit varying in composition from diorite to granite to syenite. It is generally coarse grained, leucocratic, often with megacrysts of potassium feldspar. The main body is 30 km long.

uPrPzS – (upper Proterozoic to Paleozoic Snowshoe Group).

Portions of the Tasse Lake area are underlain by the Snowshoe rocks which are Upper Proterozoic to Upper Devonian metasediments, considered correlative in age with Eagle Bay rocks of the Kootenay Terrane to the south. The Snowshoe rocks are dominated by varieties of grit, quartzite, pelite, limestone and volcanoclastic rocks.

Hovb – (Holocene basic volcanics).

The occurrence of this unit in the Tasse Lake area is outlined on BCGS geology maps as 3 km x 5 km in area, oriented northwest-southeast. The BCGS has mapped this as Neogene (upper Tertiary) volcanics and considered a part of the Tertiary-Quaternary Chilcotin Group plateau basalt flows that cover much of south-central British Columbia.

8.0 EXPLORATION PROGRAM, 2019 & 2020

8.1 Sampling Method and Approach

Rocks collected in 2019 were analyzed in 2020 for multiple elements using the Niton XL3t handheld X-ray fluorescence analyzer from Thermo Scientific Inc. Further information on this instrument is at the Niton website <http://www.niton.com/en/niton-analyzers-products/xl3/xl3t>. An overview of sample analysis using energy dispersive X-ray fluorescence (EDXRF), adapted from the Niton website, is in Appendix B.

Most rock analyses were done at Barker Minerals' field office in Likely. Coordinates were collected at all sample locations. The coordinates and rock descriptions are provided in Table No. 2. The rocks were analyzed in a manner to determine both their "high grade" and "low grade" values at each site, in order to minimize a "nugget" effect and to determine background values. Thus, at each sampling location three different rocks were collected and each were analyzed one time for their representative "grade." Barren granite was used for calibration of the XRF analyzer.

The XRF analysis method does not replace laboratory assay. It detects the presence or absence of multiple elements in prospecting and, up to a certain point, the intensity of mineralization and correlation among elements in a specimen. The XRF is very useful in analysis for base economic and pathfinder metals though Au needs to be in relatively high grade in order to be detected by the XRF.

8.2 Economic Targets and Work Done

The economic targets over all of the Cariboo Property, gold in quartz veins and volcanogenic massive sulphides. Altogether, 105 rock analyses were done for 28 elements in rocks. Zn and Cu results are plotted on the geochemical maps, Figure Nos. 10, 11, 12. These maps and accompanying geochemical tables are in Appendix G.

The rock sampling program was a continuation of sampling programs which had been conducted over a period of years. Grab rock sampling was done over in three map areas, named Frank, Ace and Black Bear East (BBE). The present economic target is primarily gold-bearing quartz veins.

The two samples presented below are those which have Au results above the detection limit. Sample nos. 2882 and 2907 were collected at the Ace and Frank areas, respectively. At Ace, there is no apparent correlation between Au and the usual pathfinder elements Zn and Cu. The case is different at the Frank Area where Zn and Cu had high values together with Au in that sample. The samples collected at Black Bear East had no significant results. Results below are all in parts per million (ppm). Results below the detection limit (<LOD) are not presented.

XRF No.	Zn	Cu	Au
2882	41	35	12.82
2907	977	964	12.25

9.0 CONCLUSIONS and RECOMMENDATIONS

Frank Area

The Frank Creek property has long been a well known VMS prospect as well as a gold prospect. Further geochemical sampling, including rock and soil, should be done in the Frank Creek Area to improve the geochemical database.

Ace Area

More intensive and extensive rock and soil sampling is recommended at Ace. The very extensive work history for the Ace property resulted in recommendations for comprehensive follow up work to be done. A synthesis of the historical work should be done along with work recommended by the previous programs in order to help plan the next stage of exploration.

Black Bear East Area

No significant results were got during the latest small sampling program. Nevertheless, prospecting and rock and soil sampling should be done over a wider area in the Black Bear East Area due to favourable geochemical results got for gold in historical work programs.

APPENDIX A

Glossary of Technical Terms and Abbreviations

Ag	Silver.
Anomalous	Chemical and mineralogical changes and higher than typical background values in elements in a rock resulting from reaction with hydrothermal fluids or increase in pressure or temperature.
Anomaly	The geographical area corresponding to anomalous geochemical or geophysical values.
As	Arsenic.
Au	Gold.
Background	The typical concentration of an element or geophysical response in an area, generally referring to values below some threshold level, above which values are designated as anomalous.
BCGS	British Columbia Geological Survey.
B.C. MEMPR	British Columbia Ministry of energy Mines and Petroleum Resources.
Bi	Bismuth.
Cd	Cadmium.
cm	Centimetre.
Co	Cobalt.
Cu	Copper.
Cratonic	Pertaining to a craton, an old part of the continental crust, generally making up the interior portion of a continent such as North America.
DCIP	An electrical method which uses the injection of current and the measurement of voltage and its rate of decay to determine the subsurface resistivity and chargeability.
DDH	Diamond drill hole.
eg.	<i>exempli grātiā</i> (for the sake of example).
EM	Electromagnetic.
E-W	East-West.
F	Fluorine.
Float	Loose rocks or boulders; the location of the bedrock source is not known.

GBC	Geoscience British Columbia.
Grab sample	A sample of a single rock or selected rock chips collected from within a restricted area of interest.
GSC	Geological Survey of Canada.
g/t	Grams per tonne (metric tonne). 34.29 g/t (metric tonnes) = 1.00 oz/T (short tons).
Ha	Hectare - an area totalling 10,000 square metres, e.g., an area 100 metres by 100 metres.
Heavy mineral concentrate	A 10 kg sample is sieved and submitted to heavy liquid separation. The resultant heaviest concentrate is then separated into magnetic and non-magnetic portions. These are then examined under microscope or assayed.
Hg	Mercury.
HLEM	Horizontal loop electromagnetic.
Intrusive	A magmatic rock that cuts into and alters older rocks and may be the source of minerals deposited into the rocks intruded, creating skarn or porphyry type mineral deposits.
IP	Induced polarization geophysical survey.
kg	Kilogram.
km	Kilometre.
lb.	Pound.
Leucocratic	Light-coloured.
<LOD	Below the level of detection.
m	Metre.
Max-Min	An HLEM technique to test for resistivity and conductivity of rocks.
µm	Micron, micro-metre, one millionth of a metre.
Mn	Manganese.
Mo	Molybdenum.
MT	Magnetotelluric. A electrical method that uses natural variations in the Earth's magnetic field to induce electric current in the ground to determine the subsurface resistivity.

my	Million years.
NE-SW	Northeast-Southwest.
NNW-SSE	North northwest – South southeast.
NW	Northwest.
NW-SE	Northwest - Southeast.
N-S	North-South.
OF	Open File.
Orogenic	The physical manifestations of the process of mountain building. Orogens are usually long, thin, arcuate tracts of rock that are geologically active and have a pronounced linear structure resulting in terranes.
oz.	Ounce.
oz/st	ounces per short ton (Imperial measurement, same as oz/T). 34.29 g/t (metric tonnes) = 1.00 oz/st (short tons).
oz/T	ounces per ton (Imperial measurement). 34.29 g/t (metric tonnes) = 1.00 oz/T (short tons).
Pathfinder	A metallic element associated with an ore element such as silver or gold. Areas of anomalous “pathfinder” elements can suggest the possible presence of ore elements though the latter may not be detected initially.
Pb	Lead.
Porphyry	A deposit where primarily Cu-bearing minerals occur in disseminated grains or veinlets through a large volume of rock within or in close association with intrusive igneous rocks. Au and Mo are also important products of porphyry deposits.
Potassic alteration	Typical of porphyry copper and lode gold deposits, results in production of micaceous, potassic minerals such as biotite in iron-rich rocks, muscovite mica or sericite in felsic rocks, and orthoclase (adularia) alteration, often quite pervasive and producing distinct salmon-pink alteration zones.
ppb	Parts per billion.
ppm	Parts per million (1 ppm = 1,000 ppb = 1 g/t).
Propylitic alteration	Alteration of rocks due to hot fluids that have a high sodium ion composition. It typically results in epidote–chlorite–albite alteration with pyrite.
Protolith	The original rock before it was metamorphosed.

QUEST	Quesnellia Exploration Strategy, a BCGS geophysical survey.
Sedex	Sedimentary-exhalative mineral deposit type.
SE	Southeast.
Skarn	Forms by chemical metasomatism of rocks in the contact zone of intrusive rocks with rocks often containing carbonate minerals. Skarns in the igneous environment are associated with hornfels and wider zones of calc-silicate rocks. Skarns are often hosts for copper, lead, zinc, iron, gold, molybdenum, tin, and tungsten ore deposits.
Sb	Antimony.
Talus	A collection of rock fragments at the base of crags or mountain cliffs, that has accumulated through rockfall from adjacent cliff faces. Also called scree.
Te	Tellurium.
TEM or TDEM	Time Domain EM.
Tensor-magnetotelluric	See MT.
Terrain	An arbitrarily defined geographic location.
Terrane	A major crustal block with a particular geologic history.
Tholeiitic	A type of basalt. The most common volcanic rocks on Earth, produced by submarine volcanism at mid-ocean ridges and make up much of the ocean crust. Chemically, these basalts have been described as subalkaline, that is, they contain less (Na_2O plus K_2O) at similar SiO_2 than alkali basalt.
TRIM	Terrain Resource Information Management, series of 1:20,000 scale maps.
VLF	Very low frequency.
VLF-EM	Very low frequency electromagnetic.
VMS	Volcanic-related massive sulphide.
VHMS	Volcanic-hosted massive sulphide. Same as VMS.
XRF	X-ray florescence.
Zn	Zinc.

APPENDIX B

Analytical Methods

Overview of sample analysis using energy dispersive X-ray fluorescence using the Thermo Scientific Niton XL3t handheld XRF analyzer

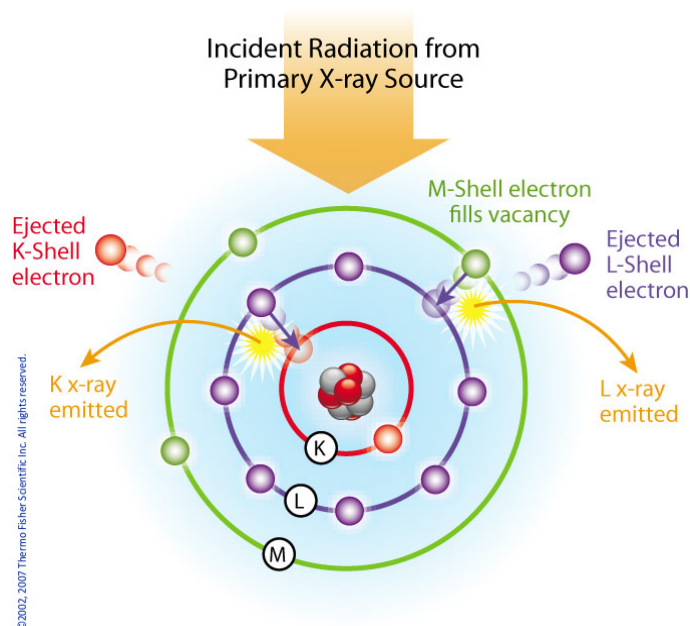
Thermo Scientific portable energy-dispersive x-ray fluorescence (EDXRF) analyzers, commonly known as XRF analyzers, can quickly and nondestructively determine the elemental composition of metal and precious metal samples of rocks, ore and soil.

Up to 40 elements may be analyzed simultaneously by measuring the characteristic fluorescence x-rays emitted by a sample. XRF analyzers can quantify elements ranging from magnesium (Mg - element 12) through uranium (U - element 92) and measure x-ray energies from 1.25 keV up to 85 keV in the case of Pb K-shell fluorescent x-rays excited with a ^{109}Cd isotope. These instruments also measure the elastic (Rayleigh) and inelastic (Compton) scatter x-rays emitted by the sample during each measurement to determine, among other things, the approximate density and percentage of the light elements in the sample.

Elemental Analysis - A Unique Set of Fingerprints

How does XRF work? Each of the elements present in a sample produces a unique set of characteristic x-rays that is a "fingerprint" for that specific element. XRF analyzers determine the chemistry of a sample by measuring the spectrum of the characteristic x-ray emitted by the different elements in the sample when it is illuminated by x-rays. These x-rays are emitted either from a miniaturized x-ray tube, or from a small, sealed capsule of radioactive material.

1. A fluorescent x-ray is created when an x-ray of sufficient energy strikes an atom in the sample, dislodging an electron from one of the atom's inner orbital shells.
2. The atom regains stability, filling the vacancy left in the inner orbital shell with an electron from one of the atom's higher energy orbital shells.
3. The electron drops to the lower energy state by releasing a fluorescent x-ray, and the energy of this x-ray is equal to the specific difference in energy between two quantum states of the electron.



Atom emits characteristic X-rays when illuminated by x-rays from a primary source.

When a sample is measured using XRF, each element present in the sample emits its own unique fluorescent x-ray energy spectrum. By simultaneously measuring the fluorescent x-rays emitted by the different elements in the sample, the Thermo Scientific portable XRF analyzers can rapidly determine those elements present in the sample and their relative concentrations - in other words, the elemental chemistry of the sample.



Overview of the Thermo Scientific Niton XL3t handheld XRF analyzer.

APPENDIX C

REFERENCES

Reports listed below which are Assessment Reports are available for free download from the BC Geological Survey (BCGS) Assessment Report Indexing System (ARIS) at the Ministry of Energy, Mines and Petroleum Resources' website. www.empr.gov.bc.ca/Mining/Geoscience/ARIS

Ballantyne, S.B., Hornbrook, E.W.H., Johnson, W.M., National Geochemical Reconnaissance, Quesnel Lake, British Columbia, NTS 093A, GSC Open File 776, 1981. (Alternately, BC MEMPR Open File BC RGS-5).

Barker Minerals Ltd., Preliminary Prospectus, July 17, 2001. Report filed with System for Electronic Document Analysis and Retrieval (SEDAR) under authority of Canadian Securities Administrators (CSA).

Barker Minerals Ltd., Annual Information Form, October 28, 2002. Report filed with System for Electronic Document Analysis and Retrieval (SEDAR) under authority of Canadian Securities Administrators (CSA).

Barrett, T.J. and MacLean, W.H., Lithological and Lithochemical Features of Rocks on the Frank Creek and Ace Properties, December 31, 2003. (as Appendix V in Assessment Report 27655 by Doyle, L.E. and as Appendix III in Assessment Report 28248 by Doyle, L.E.).

Bowman, A., Report on the Geology of the Mining District of Cariboo, British Columbia, in Geological and Natural History Survey of Canada Reports and Maps of Investigations and Surveys, 1887-1888; Selwyn, A R C; Geological Survey of Canada, Annual Report vol. 3, pt. 1, 1889; pages 1C-49C 5 sheets, including a Map titled Placer Mines of Harvey Creek in Cariboo District, British Columbia, GSC Map 371, (1890).

Brown, A.S., Geology of the Cariboo River Area, British Columbia, BC Department of Mines and Petroleum Resources, Bulletin No. 47, 1963.

Doyle, L.E., Prospecting, Geochemical, Geophysical, Geological, Trenching and Diamond Drilling of the Ace, Frank Creek, SCR and Peripheral Properties, Little River Area, March 20, 2003. (Assessment Report 27125 – includes as Appendix 3: Wild, C.J., June 26, 2002 and Appendix 4: Walcott, P.E., September, 2002 and Appendix 5: Perry, B.J., October 21, 2002).

Doyle, L.E., Prospecting, Geochemical, Geophysical, Geological, Trenching and Diamond Drilling of the Ace, Frank Creek, SCR Massive Sulphide Projects and Peripheral Properties, Little River Area, February 15, 2005. (Assessment Report 27655 – includes as Appendix V: Barrett, T.J. & MacLean W.H., December 31, 2003 and Appendix VI: McKinley, S.D., July 19, 2004).

Doyle, L.E., Geochemical, Geophysical, Geological, Trenching and Diamond Drilling of the Ace, Frank Creek, SCR, Kangaroo Projects and Peripheral Properties, Little River Area, August 26, 2005. (Assessment Report 28248 – includes as Appendix III: Barrett, T.J. and MacLean, W.H., December 31, 2003 and as Appendix I: McKinley, S.D., July 19, 2004).

Doyle, L.E., Diamond Drilling Geological Mapping, Trenching, Prospecting and Geophysical Work Assessment report on the Frank Creek, Black Bear and Simlock Properties, January 27, 2012. (Assessment Report 32696).

Ferri, F., and O'Brien, B.H., Preliminary Geology of the Cariboo Lake Area, Central British Columbia (093A/11, 12, 13 and 14), in Geological Fieldwork 2001, B.C. Ministry of Energy and Mines, Paper 2002-1.

Ferri, F., and O'Brien, B.H., Preliminary Geology of the Cariboo Lake Area, Central British Columbia (093A/11, 12, 13 and 14), in Geological Fieldwork 2001, B.C. Ministry of Energy and Mines, Paper 2002-1.

Ferri, F., and O'Brien, B.H., Geology of the Cariboo Lake Area, Central British Columbia (093A/11, 12, 13 and 14), B.C. Ministry of Energy and Mines, Open File 2003-1.

Ferri, F., and O'Brien, B.H., Geology and Massive Sulphide Potential of the Barkerville Terrane, Cariboo Lake Area, British Columbia, BC Geological Survey Branch, Cordillerran Roundup Poster No. 8, Information Circular 2002-3.
http://www.empr.gov.bc.ca/DL/GSBPubs/InfoCirc/IC2002-3/08-Ferri_Barkerville.pdf

Ferri, F. & Schiarizza, P., Re-interpretation of the Snowshoe Group stratigraphy across a south-west verging nappe structure and its implications for regional correlations within the Kootenay terrane in Geological Association of Canada GAC Special Paper 45, 2006.

Hóy, T. and Ferri, F., Stratabound Base Metal Deposits of the Barkerville Subterrane, Central British Columbia (093A/NW), in Geological Fieldwork 1997, B.C. Ministry of Energy and Mines, Paper 1998-1.

Geological Survey of Canada, Likely Survey, 2009. An airborne geophysical survey in 2008-2009 covering a 30 km x 150 km area oriented NW-SE between the latitudes of Quesnel and Williams Lake. A series of 1:50,000 scale magnetic and gamma-ray spectrometric maps, published as GSC Open Files 6157 to 6166.

Geological Survey of Canada, Cariboo Lake Survey, 2009. A detailed airborne geophysical survey over the central portion of the Likely survey. The flight lines were 200 m apart and oriented NE-SW as before. A series of 1:20,000 scale magnetic and electromagnetic maps published as GSC Open Files 6232 to 6252.

Hóy, T., (2003), Barker Minerals Ltd.: Ace and Frank Creek Exploration Summary, letter from T. Hóy to Barker Minerals.

Jones, T.A., BT Group – Report on Geology & Geochemistry, March 1982. (Assessment Report 10252).

Lane, B. and MacDonald K., Volcanogenic Massive Sulphide Potential in the Slide Mountain and Barkerville Terranes, Cariboo Mountains, in BC Mines Branch, Exploration and Mining in British Columbia – 1999, pp 65-77.

Logan, J., Turna, R., Doyle, L.E., Diamond Drilling, Geological Mapping, Trenching, Prospecting and Physical Work Assessment Report on the Black Bear and Frank Creek Properties, October 28, 2013. (Assessment Report: 34331).

McKinley, S. D., (2004), Technical Report on the Cariboo Properties of Barker Minerals Ltd. (Including The Frank Creek and Sellers Creek Road Massive Sulphide Projects, the Ace Massive Sulphide and Vein Gold Project, the Kangaroo Copper-Gold Project, the Rollie Creek Project and the Quesnel Platinum Project), July 19, 2004. Report filed with System for Electronic Document Analysis and Retrieval (SEDAR) under authority of Canadian Securities Administrators (CSA), (and as Appendix VI in Assessment Report 27655 by Doyle, L.E. and Appendix I in Assessment Report 28248 by Doyle, L.E.).

Panteleyev, A., Bailey, D.G., Bloodgood, M.A. and Hancock K.D., (1996), Geology and Mineral Deposits of the Quesnel River – Horsefly Map Area, Central Quesnel Trough, British Columbia, NTS Map sheets 93A/5, 6, 7, 11, 12, 13; 93B/9, 16; 93G/1; 93H4, BC Geological Survey Branch Bulletin 97.

Payne, J.G., Preliminary Lithological Report on the Frank Creek VMS Prospect – and the Linecutting and Grid Preparation on the Black Bear, Sellers, Upper Grain, and Tasse Prospects, August 1999. (Assessment Report 26003).

Payne, J.G., Geology, Geochemistry and Geophysics of the Frank Creek, Ace and Sellers Creek Road and Quesnel Platinum Properties, February 2001. (Assessment Report 26504 – includes as Appendix 2: Walcott, P.E., February 2001).

Payne, J.G. and Perry, B.J., Qualification Report on Exploration of the Barker Minerals Ltd. Property, including the Frank Creek, Ace and Sellers Creek Road VMS Projects and the Quesnel Platinum Project, October 25, 2001. Report filed with System for Electronic Document Analysis and Retrieval (SEDAR) under authority of Canadian Securities Administrators (CSA).

Perry, B.J., Report on Exploration of the Barker Minerals Ltd. Property, including the Frank Creek and Sellers Creek Road VMS Projects, the Ace VMS and Vein Gold Project and the Quesnel Platinum Project, October 21, 2002. Engineering Report filed with System for Electronic Document Analysis and Retrieval (SEDAR) under authority of Canadian Securities Administrators (CSA), (and as Appendix 5 in Assessment Report 27125 by Doyle, L.E.).

QUEST Survey: regarding numerous reports and maps see www.geosciencebc.com/s/Quest.asp.

Schiarizza, P., Bedrock Geology and Lode Gold Occurrences, Cariboo Lake to Wells, British Columbia (Parts of NTS 93A/13, 14; 93H/3,4), BC Ministry of Energy, Mines, and Petroleum Resources, Open File 2004-12.

Schiarizza, P. and Ferri, F., Barkerville Terrane, Cariboo Lake to Wells: A New Look at Stratigraphy, Structure and Regional Correlations of the Snowshoe Group, in Geological Fieldwork 2002, B.C. MEMPR, Paper 2003-1.

Struik, L.C., Structural Geology of the Cariboo Gold Mining District, East Central British Columbia, GSC Memoir 421, 1988.

Turna, R. and Doyle, L.E., Geological, Geochemical, Geophysical Trenching, Drilling Assessment Report on the Frank Creek, Cariboo and Peripheral Properties, February 25, 2008. (Assessment Report 29740).

Turna, R., Drilling and Geological Assessment Report on the Frank Creek, Black Bear, Gerimi and Peripheral Properties, February 10, 2009. (Assessment Report 30764).

Turna, R., Diamond Drilling, Prospecting and Physical Work Assessment Report on the Frank Creek and Peripheral Properties, February 20, 2010. (Assessment Report 31389).

Turna, R., Technical Report - Geochemical and Geochemical Assessment Report on the Frank Creek and Black Bear East Properties,, December 13, 2014. (Assessment Report 35012).

Turna R., Geological, Geochemical, Prospecting and Physical Work Assessment Report on the Frank Creek, Black Bear East and Peripheral Properties, February 18, 2015. (Assessment Report 35157).

Turna R., Geochemical Assessment Report on the Ace, Mag and Rollie Creek Properties, July 31, 2015. (Assessment Report 35468).

Turna R., Geochemical Assessment Report on the Ace, Rollie and Black Bear East Properties, November 30, 2015. (Assessment Report 35717).

Turna R., Geological & Geochemical Assessment Report on the Main Group, comprised of the Two Mile Creek, Ace, Black Bear East & Peripheral Properties, March 16, 2016, amended August 6, 2016. (Assessment Report 36040).

Turna, R. Geological, Geochemical, Prospecting and Physical Work Assessment Report on the Frank Creek, Black Bear East and Peripheral Properties. February 18, 2015, amended September 7, 2015. (Assessment Report 35157).

Turna R., Geological & Geochemical Assessment Report on the Rollie - Frank Creek Properties, May 15, 2016, amended August 24, 2016. (Assessment Report 36044).

Turna R., Geological & Geochemical Assessment Report on the Rollie Creek & Frank Creek Properties, July 20, 2016. (Assessment Report 36162).

Turna R., Geochemical Assessment Report on the Kangaroo & Frank Creek Properties, December 31, 2016. (Assessment Report 36449).

Turna R., Geological & Geochemical Assessment Report on the Cariboo Property KAY, SCR and Rollie Areas, March 6, 2018. (Assessment Report 37167).

Turna R., Geological & Geochemical Assessment Report on the Cariboo Lake Property Unlikely & Keithley Areas, November 7, 2018. (Assessment Report 37702).

Turna R., Geochemical Assessment Report on the Cariboo Lake Property, Frank Creek Area, October 30, 2019. (Assessment Report 38552).

Turna R., Geological and Geochemical Assessment Report on the Cariboo Lake Property, Frank Creek Area, February 19, 2020. (Assessment Report 38864).

Walcott, P.E., A Geophysical Report on Ground Electromagnetic and Magnetic Ace, Frank Creek and Sellers Creek Properties, Little River Area, February 2001. (as Appendix 2 in Assessment Report 26504 by Payne J.G.).

Walcott, P.E., A Report on Electromagnetic, Gravity, Induced Polarization, Trenching and Soil Sampling, Ace, Frank Creek and Sellers Creek Properties, March 2002. (Assessment Report 26805).

Walcott, P.E., A Preliminary Report on Electromagnetic, Gravity, Magnetic & Induced Polarization Surveying, Ace & Frank Creek Properties, September 2002. (as Appendix 4 in Assessment Report 27125 by Doyle, L.E.).

Wild, C.J., Preliminary Report on Diamond Drilling and Trenching for the Frank Creek & Ace Projects, June 26, 2002. (as Appendix 3 in Assessment Report 27125 by Doyle, L.E.).

Additional References:

Barker Minerals Ltd. website <http://www.barkerminerals.com/s/Background.asp>

BC Ministry of Energy Mines and Petroleum Resources, Mineral Deposit Models:

Deposit Type G04 - Besshi massive sulphide

APPENDIX D

STATEMENT of AUTHOR'S QUALIFICATIONS

Statement of Author's Qualifications

I, Rein Turna, of the City of West Vancouver, British Columbia, hereby certify that:

1. I am a graduate of the University of British Columbia with a B.Sc. in Geological Sciences granted in 1975.
2. I am a registered member of the Professional Engineers and Geoscientists of British Columbia.
3. I have worked as a geologist in British Columbia, Saskatchewan, Ontario, Yukon and Northwest Territories in Canada since 1975.

R. Turna

June 10, 2020

APPENDIX E

STATEMENT of EXPENDITURES

Barker Minerals Ltd.

Work was completed between August 15, 2019 to February 23, 2020

Work was done on claim # 1070161

Event # 5775261

Cariboo Property - Ace Area - Geological

	Date	Days	Rate	Sub-total
Rein Turna - Geologist				
Report writing, maps & supervision		2	\$ 600.00	\$ 1,200.00
Room & board		2	\$ 100.00	\$ 200.00
Colleen Doyle				
Report compilation and filing		1	\$ 350.00	\$ 350.00
Room & board		1	\$ 100.00	\$ 100.00
				<u>\$ 1,850.00</u>

Cariboo Property - Ace Area - Geological

Louis Doyle				
Rock sample collections	October 31, 2019	1	\$ 600.00	\$ 600.00
Rock sample collections	November 1, 2019	0.5	\$ 600.00	\$ 300.00
Room & board		1.5	\$ 100.00	\$ 150.00
Vehicle & gas		1.5	\$ 100.00	\$ 150.00
Brian Hall				
Rock sample collections	October 31, 2019	1	\$ 600.00	\$ 600.00
Rock sample collections	November 1, 2019	0.5	\$ 600.00	\$ 300.00
Room & board		1.5	\$ 100.00	\$ 150.00

Cariboo Property - Ace Area - Geochemical

Louis Doyle				
Rock sample preparation & descriptions	January 10, 2020	1	\$ 600.00	\$ 600.00
Room & board		1	\$ 100.00	\$ 100.00
Brian Hall - XRF operator				
XRF analysis	January 10, 2020	1	\$ 600.00	\$ 600.00
Room & board		1	\$ 100.00	\$ 100.00
XRF rental		2	\$ 100.00	\$ 200.00
				<u>\$ 3,850.00</u>

Intentionally left blank

Barker Minerals Ltd.

Work was completed between August 15, 2019 to February 23, 2020

Work was done on claim # 1070161

Event # 5775261

Cariboo Property - Ace Area - Misc. expenditures

Exploration supplies & equipment

Safety equipment (MTC), exploration supplies & equipment, communication devices & quad

Exploration supplies & equipment

\$ -

MTC rental (vehicle & gas)

2 \$ 100.00 \$ 200.00

Quad rental

0 \$ 75.00 \$ -

Communication devices

Hand held radios, satellite phones & SPOT locators

1 \$ 24.00 \$ 24.00

Sub-total \$ **224.00**

Cariboo Property - Ace Area - Expenditure Summary

Geological Sub-total \$ 1,850.00

Geochemical Sub-total \$ 3,850.00

Misc. expenditures Sub-total \$ 224.00

Ace Expenditure Total \$ 5,924.00

Barker Minerals Ltd.

Work was completed between September 1, 2019 to February 23, 2020

Work was done on claim # 1070162

Event # 5775262

Cariboo Property - Frank Creek Area - Office

Rein Turna - Geologist

Report writing, maps and managing	2	\$ 600.00	\$	1,200.00
Room & board	2	\$ 100.00	\$	200.00
				<u>\$ 1,400.00</u>

Cariboo Property - Frank Creek Area - Geological - Field

	Date	Days	Rate	Sub-total
Louis Doyle				
Rock sample collection	November 1, 2019	1	\$ 600.00	\$ 600.00
Rock sample collection	November 2, 2019	0.5	\$ 600.00	\$ 300.00
Vehicle & gas		1.5	\$ 100.00	\$ 150.00
Room & board		1.5	\$ 100.00	\$ 150.00
Brian Hall				
Rock sample collection	November 1, 2019	1	\$ 600.00	\$ 600.00
Rock sample collection	November 2, 2019	0.5	\$ 600.00	\$ 300.00
Room & board		1.5	\$ 100.00	\$ 150.00
XRF rental		2	\$ 100.00	\$ 200.00
				<u>\$ 2,450.00</u>

Cariboo Property - Frank Creek Area - Geochemical - Field

Louis Doyle				
Rock sample preparation	January 9, 2020	1	\$ 600.00	\$ 600.00
Room & board		1	\$ 100.00	\$ 100.00
Brian Hall				
XRF Analysis	January 9, 2020	1	\$ 600.00	\$ 600.00
Room & board		1	\$ 100.00	\$ 100.00
				<u>\$ 1,400.00</u>

Cariboo Property - Frank Creek Area - Misc. expenditures

Exploration supplies & equipment				\$ 55.00
Quad			\$ -	\$ -
Safety Equipment (MTC rental)		2	\$ 100.00	\$ 200.00
Communication devices -				
Hand held radios, satellite radios phones & SPOT locators		1	\$ 24.00	\$ 24.00
			Sub-total	<u>\$ 279.00</u>

Barker Minerals Ltd.

Work was completed between September 1, 2019 to February 23, 2020

Work was done on claim # 1070162

Event # 5775262

Cariboo Property - Frank Creek Area - Expenditure Summary

Office Sub-total	\$	1,400.00
Geological Sub-Total	\$	2,450.00
Geochemical Sub-total	\$	1,400.00
Misc. Expenditures Sub-total	\$	279.00
Expenditure Total	\$	5,529.00

Barker Minerals Ltd.

Work was completed between September 15, 2019 - February 22, 2020

Work was done on claim # 1070173

Event # 5775263

Cariboo Property - BBE Area - Geological - Office

Louis Doyle

Planning, managing & interpretation	1	\$ 600.00	\$ 600.00
Room & board	1	\$ 100.00	\$ 100.00

Rein Turna - Geologist

Report writing, maps and managing	4	\$ 600.00	\$ 2,400.00
Room & board	4	\$ 100.00	\$ 400.00

Colleen Doyle

Report compilation and filing	2	\$ 350.00	\$ 700.00
Room & board	2	\$ 100.00	\$ 200.00

\$ 4,400.00

Cariboo Property - BBE Area - Geological - Field Days

	Date	Days	Rate	Subtotal
Louis Doyle -				
Rock sample collection	November 3, 2019	1	\$ 600.00	\$ 600.00
Rock sample collection	November 4, 2019	0.5	\$ 600.00	\$ 300.00
Room & Board (day rate)		1.5	\$ 100.00	\$ 150.00
Vehicle & gas (day rate)		1.5	\$ 100.00	\$ 150.00
Brian Hall -				
Rock sample collection	November 3, 2019	1	\$ 600.00	\$ 600.00
Rock sample collection	November 4, 2019	0.5	\$ 600.00	\$ 300.00
Room & Board (day rate)		1.5	\$ 100.00	\$ 150.00
				\$ 2,250.00

Cariboo Property - BBE Area - Geochemical - Field Days

	Date	Days	Rate	Subtotal
Louis Doyle -				
Rock sample preparation & XRF assistant	January 8, 2020	1	\$ 600.00	\$ 600.00
Room & Board (day rate)		1	\$ 100.00	\$ 100.00

Barker Minerals Ltd.

Work was completed between September 15, 2019 - February 22, 2020

Work was done on claim # 1070173

Event # 5775263

Cariboo Property - BBE Area - Geochemical - Field Days (continued)

	Date	Days	Rate	Subtotal
Brian Hall -				
XRF Analysis	January 8, 2020	1	\$ 600.00	\$ 600.00
Room & Board (day rate)		1	\$ 100.00	\$ 100.00
XRF rental		2	\$ 100.00	\$ 200.00
				<u>\$ 1,600.00</u>

Cariboo Property - BBE Area - Travel to/from

Louis Doyle

Travel to/from	January 3, 2020	1	\$ 600.00	\$ 600.00
Room & Board (day rate)		1	\$ 100.00	\$ 100.00
Vehicle & gas (day rate)		1	\$ 100.00	\$ 100.00

Brian Hall

Travel to/from	January 3, 2020	1	\$ 600.00	\$ 600.00
Room & Board (day rate)		1	\$ 100.00	\$ 100.00
Vehicle & gas (day rate)		1	\$ 100.00	\$ 100.00

Sub-total \$ 1,600.00

Cariboo Property - BBE Area - Miscellaneous Expenditures

Exploration supplies & equipment

Safety equipment (MTC), exploration supplies & equipment, communication devices & quad

Exploration supplies & equipment				\$ 180.00
Quad Rental		1	\$ 75.00	\$ 75.00

Miscellaneous expenditures continued on next page

Barker Minerals Ltd.

Work was completed between September 15, 2019 - February 22, 2020

Work was done on claim # 1070173

Event # 5775263

Cariboo Property - BBE Area - Miscellaneous Expenditures (continued)

MTC rental	2	\$ 100.00	\$ 200.00
Communication devices			
Hand held radios, satellite phones, Spot emergency locator	1	\$ 24.00	\$ 24.00
	Sub-total		\$ 479.00

Cariboo Property - BBE Area - Expenditure Summary

Geological - Office	Sub-total	\$ 4,400.00
Geological - Field Days	Sub-total	\$ 2,250.00
Geochemical - Field Days	Sub-total	\$ 1,600.00
Travel to/from	Sub-total	\$ 1,600.00
Misc. Expenditures	Sub-total	\$ 479.00
	Total	\$ 10,329.00

APPENDIX F

ROCK SAMPLE DESCRIPTIONS AND COORDINATES

Table No. 2

Cariboo Property - Frank, Ace, Black Bear East Areas - Rock Sample Coordinates and Descriptions

<u>XRF No.</u>	<u>Field No.</u>	<u>Fig. No. / Area</u>	<u>Type</u>	<u>Easting (X)</u>	<u>Northing (Y)</u>	<u>XRF Target and Description and Comment</u>	<u>Magnetic</u>
						<u>XRF Target Features</u> 1 = sample of main mass 4 = sulphide band 2 = quartz vein 5 = rusty, altered 3 = sulphide bleb 6 = other	Y or N
Cariboo Property Rock Sampling at Frank, Ace, Black Bear East Areas							
Frank Area Rock Sampling							
2892	FRJ-01	Figure No. 10	float	593996	5842494	3 Graphitic black schist	N
2893	FRJ-01a	Figure No. 10	float	593996	5842494	3 Graphitic black schist	N
2894	FRJ-01b	Figure No. 10	float	593996	5842494	3 Graphitic black schist	N
2895	FRJ-02	Figure No. 10	float	593922	5842476	3 Altered chrome mica	N
2896	FRJ-02a	Figure No. 10	float	593922	5842476	3 Altered chrome mica	N
2897	FRJ-02b	Figure No. 10	float	593922	5842476	3 Altered chrome mica	N
2898	FRJ-03	Figure No. 10	float	593841	5842560	3 Rusty quartz vein	N
2899	FRJ-03a	Figure No. 10	float	593841	5842560	3 Rusty quartz vein	N
2900	FRJ-03b	Figure No. 10	float	593841	5842560	3 Rusty quartz vein	N
2901	FRJ-04	Figure No. 10	float	593785	5842598	3 Graphitic black schist	N
2902	FRJ-04a	Figure No. 10	float	593785	5842598	3 Graphitic black schist	N
2903	FRJ-04b	Figure No. 10	float	593785	5842598	3 Graphitic black schist	N
2904	FRJ-05	Figure No. 10	float	593714	5842571	3 Quartz vein	N
2905	FRJ-05a	Figure No. 10	float	593714	5842571	3 Quartz vein	N
2906	FRJ-05b	Figure No. 10	float	593714	5842571	3 Quartz vein	N
2907	FRJ-06	Figure No. 10	float	593688	5842540	3 Altered quartz mica schist	N
2908	FRJ-06a	Figure No. 10	float	593688	5842540	3 Altered quartz mica schist	N
2909	FRJ-06b	Figure No. 10	float	593688	5842540	3 Altered quartz mica schist	N
2910	FRJ-07	Figure No. 10	float	593638	5842516	3 Quartz vein	N
2911	FRJ-07a	Figure No. 10	float	593638	5842516	3 Quartz vein	N
2912	FRJ-07b	Figure No. 10	float	593638	5842516	3 Quartz vein	N
2913	FRJ-08	Figure No. 10	float	593630	5842470	3 Quartz vein	N
2914	FRJ-08a	Figure No. 10	float	593630	5842470	3 Quartz vein	N
2915	FRJ-08b	Figure No. 10	float	593630	5842470	3 Quartz vein	N
2916	FRJ-09	Figure No. 10	float	593634	5842399	3 Quartz vein	N
2917	FRJ-09a	Figure No. 10	float	593634	5842399	3 Quartz vein	N
2918	FRJ-09b	Figure No. 10	float	593634	5842399	3 Quartz vein	N
2919	FRJ-10	Figure No. 10	float	593725	5842428	3 Quartz vein	N

Table No. 2

Cariboo Property - Frank, Ace, Black Bear East Areas - Rock Sample Coordinates and Descriptions

<u>XRF No.</u>	<u>Field No.</u>	<u>Fig. No. / Area</u>	<u>Type</u>	<u>Easting (X)</u>	<u>Northing (Y)</u>	<u>XRF Target and Description and Comment</u>	<u>Magnetic</u>
						<u>XRF Target Features</u> 1 = sample of main mass 4 = sulphide band 2 = quartz vein 5 = rusty, altered 3 = sulphide bleb 6 = other	Y or N
Cariboo Property Rock Sampling at Frank, Ace, Black Bear East Areas							
Frank Area Rock Sampling							
2920	FRJ-10a	Figure No. 10	float	593725	5842428	3 Quartz vein	N
2921	FRJ-10b	Figure No. 10	float	593725	5842428	3 Quartz vein	N
2922	FRJ-11	Figure No. 10	float	593830	5842461	3 Quartz vein	N
2923	FRJ-11a	Figure No. 10	float	593830	5842461	3 Quartz vein	N
2924	FRJ-11b	Figure No. 10	float	593830	5842461	3 Quartz vein	N
Ace Area Rock Sampling							
2856	ACEJ-01	Figure No. 11	float	627724	5851801	1 Quartz	N
2857	ACEJ-01a	Figure No. 11	float	627724	5851801	1 Quartz	N
2858	ACEJ-01b	Figure No. 11	float	627724	5851801	1 Quartz	N
2859	ACEJ-02	Figure No. 11	float	627762	5851773	1 Quartz	N
2860	ACEJ-02a	Figure No. 11	float	627762	5851773	1 Quartz	N
2861	ACEJ-02b	Figure No. 11	float	627762	5851773	1 Quartz	N
2862	ACEJ-03	Figure No. 11	float	627801	5851757	1 Highly altered quartz mica schist	N
2863	ACEJ-03a	Figure No. 11	float	627801	5851757	1 Highly altered quartz mica schist	N
2864	ACEJ-03b	Figure No. 11	float	627801	5851757	1 Highly altered quartz mica schist	N
2865	ACEJ-04	Figure No. 11	float	627807	5851623	1 Highly altered quartz mica schist	N
2866	ACEJ-04a	Figure No. 11	float	627807	5851623	1 Highly altered quartz mica schist	N
2867	ACEJ-04b	Figure No. 11	float	627807	5851623	1 Highly altered quartz mica schist	N
2868	ACEJ-05	Figure No. 11	float	627770	5851576	1 Highly altered quartz mica schist	N
2869	ACEJ-05a	Figure No. 11	float	627770	5851576	1 Highly altered quartz mica schist	N
2870	ACEJ-05b	Figure No. 11	float	627770	5851576	1 Highly altered quartz mica schist	N
2871	ACEJ-06	Figure No. 11	float	627705	5851478	1 Highly altered quartz mica schist	N
2872	ACEJ-06a	Figure No. 11	float	627705	5851478	1 Highly altered quartz mica schist	N
2873	ACEJ-06b	Figure No. 11	float	627705	5851478	1 Highly altered quartz mica schist	N
2874	ACEJ-07	Figure No. 11	float	627704	5851434	1 Highly altered quartz mica schist	N
2875	ACEJ-07a	Figure No. 11	float	627704	5851434	1 Highly altered quartz mica schist	N
2876	ACEJ-07b	Figure No. 11	float	627704	5851434	1 Highly altered quartz mica schist	N

Table No. 2

Cariboo Property - Frank, Ace, Black Bear East Areas - Rock Sample Coordinates and Descriptions

<u>XRF No.</u>	<u>Field No.</u>	<u>Fig. No. / Area</u>	<u>Type</u>	<u>Easting (X)</u>	<u>Northing (Y)</u>	<u>XRF Target and Description and Comment</u>	<u>Magnetic</u>
						<u>XRF Target Features</u>	Y or N
						1 = sample of main mass	4 = sulphide band
						2 = quartz vein	5 = rusty, altered
						3 = sulphide bleb	6 = other
Cariboo Property Rock Sampling at Frank, Ace, Black Bear East Areas							
Ace Area Rock Sampling							
2877	ACEJ-08	Figure No. 11	float	627664	5851453	1 Quartz	N
2878	ACEJ-08a	Figure No. 11	float	627664	5851453	1 Quartz	N
2879	ACEJ-08b	Figure No. 11	float	627664	5851453	1 Quartz	N
2880	ACEJ-09	Figure No. 11	float	627622	5851440	1 Rusty quartz mica schist	N
2881	ACEJ-09a	Figure No. 11	float	627622	5851440	1 Rusty quartz mica schist	N
2882	ACEJ-09b	Figure No. 11	float	627622	5851440	1 Rusty quartz mica schist	N
2883	ACEJ-10	Figure No. 11	float	627608	5851550	1 Rusty quartz mica schist	N
2884	ACEJ-10a	Figure No. 11	float	627608	5851550	1 Rusty quartz mica schist	N
2885	ACEJ-10b	Figure No. 11	float	627608	5851550	1 Rusty quartz mica schist	N
2886	ACEJ-11	Figure No. 11	float	627649	5851583	1 Rusty quartz mica schist	N
2889	ACEJ-11a	Figure No. 11	float	627649	5851583	1 Rusty quartz mica schist	N
2887	ACEJ-11b	Figure No. 11	float	627649	5851583	1 Rusty quartz mica schist	N
2888	ACEJ-12	Figure No. 11	float	627661	5851642	1 Altered quartz biotite schist	N
2890	ACEJ-12a	Figure No. 11	float	627661	5851642	1 Altered quartz biotite schist	N
2891	ACEJ-12b	Figure No. 11	float	627661	5851642	1 Altered quartz biotite schist	N
Black Bear East Area Rock Sampling							
2925	BBJ-01	Figure No. 12	float	630362	5828599	1 Olivine basalt	N
2926	BBJ-01a	Figure No. 12	float	630362	5828599	1 Olivine basalt	N
2927	BBJ-01b	Figure No. 12	float	630362	5828599	1 Olivine basalt	N
2928	BBJ-02	Figure No. 12	float	630178	5828575	1 Olivine basalt	N
2929	BBJ-02a	Figure No. 12	float	630178	5828575	1 Olivine basalt	N
2930	BBJ-02b	Figure No. 12	float	630178	5828575	1 Olivine basalt	N
2931	BBJ-03	Figure No. 12	float	630026	5828462	1 Basalt with olivine phenocrysts and nodules	N
2932	BBJ-03a	Figure No. 12	float	630026	5828462	1 Basalt with olivine phenocrysts and nodules	N
2933	BBJ-03b	Figure No. 12	float	630026	5828462	1 Basalt with olivine phenocrysts and nodules	N
2934	BBJ-04	Figure No. 12	float	629825	5828362	1 Basalt with olivine phenocrysts and nodules	N
2935	BBJ-04a	Figure No. 12	float	629825	5828362	1 Basalt with olivine phenocrysts and nodules	N

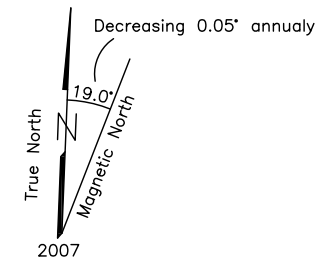
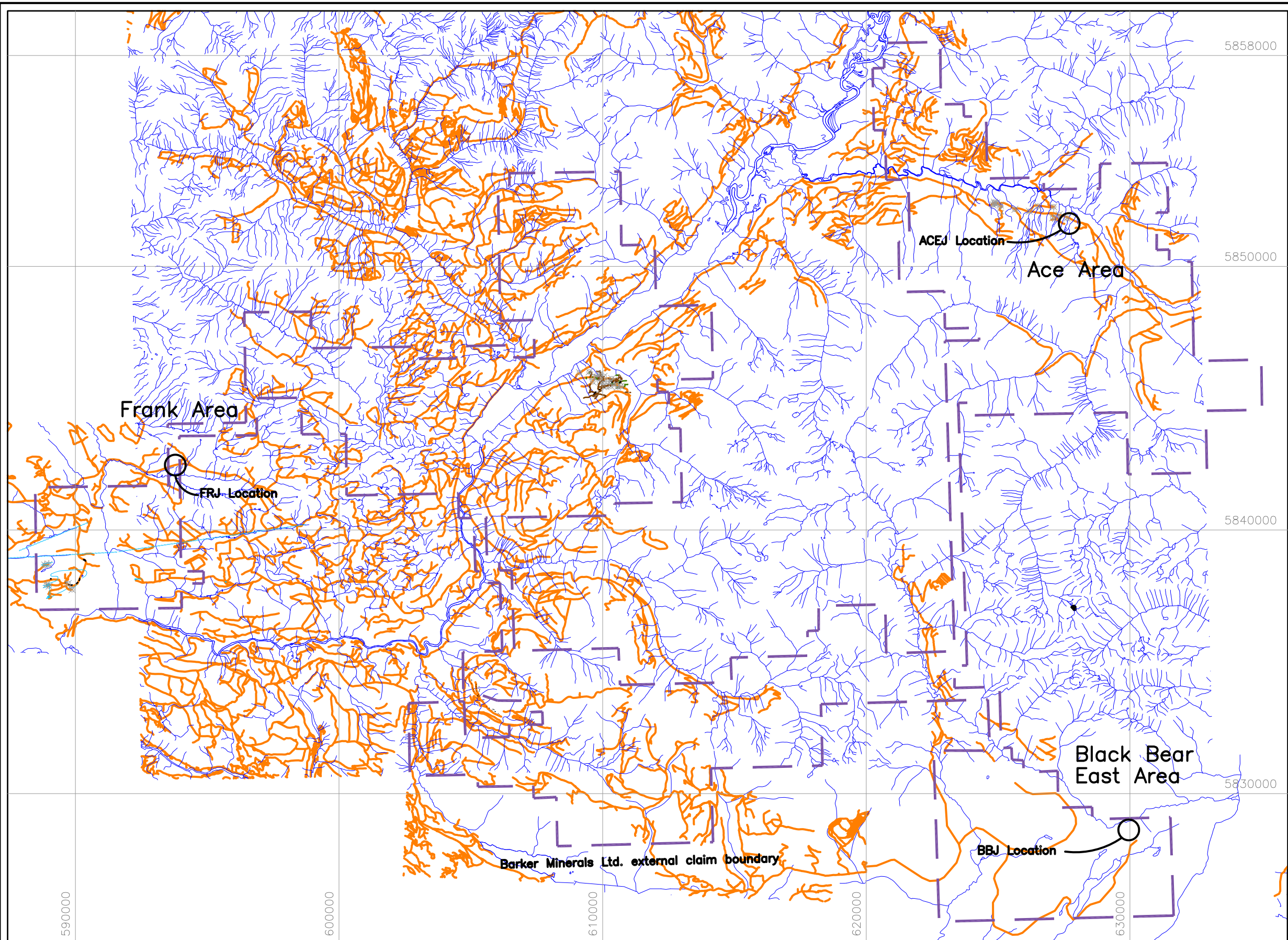
Table No. 2

Cariboo Property - Frank, Ace, Black Bear East Areas - Rock Sample Coordinates and Descriptions

<u>XRF No.</u>	<u>Field No.</u>	<u>Fig. No. / Area</u>	<u>Type</u>	<u>Easting (X)</u>	<u>Northing (Y)</u>	<u>XRF Target and Description and Comment</u>	<u>Magnetic</u>
						<u>XRF Target Features</u> 1 = sample of main mass 4 = sulphide band 2 = quartz vein 5 = rusty, altered 3 = sulphide bleb 6 = other	Y or N
Cariboo Property Rock Sampling at Frank, Ace, Black Bear East Areas							
Black Bear East Area Rock Sampling							
2936	BBJ-04b	Figure No. 12	float	629825	5828362	1 Basalt with olivine phenocrysts and nodules	N
2937	BBJ-05	Figure No. 12	float	629635	5828483	1 Basalt with olivine phenocrysts and nodules	N
2938	BBJ-05a	Figure No. 12	float	629635	5828483	1 Basalt with olivine phenocrysts and nodules	N
2939	BBJ-05b	Figure No. 12	float	629635	5828483	1 Basalt with olivine phenocrysts and nodules	N
2940	BBJ-06	Figure No. 12	float	629623	5828657	1 Olivine basalt	N
2941	BBJ-06a	Figure No. 12	float	629623	5828657	1 Olivine basalt	N
2942	BBJ-06b	Figure No. 12	float	629623	5828657	1 Olivine basalt	N
2943	BBJ-07	Figure No. 12	float	629747	5828789	1 Olivine basalt	N
2944	BBJ-07a	Figure No. 12	float	629747	5828789	1 Olivine basalt	N
2945	BBJ-07b	Figure No. 12	float	629747	5828789	1 Olivine basalt	N
2946	BBJ-08	Figure No. 12	float	629813	5828788	1 Basalt with olivine phenocrysts and nodules	N
2947	BBJ-08a	Figure No. 12	float	629813	5828788	1 Basalt with olivine phenocrysts and nodules	N
2948	BBJ-08b	Figure No. 12	float	629813	5828788	1 Basalt with olivine phenocrysts and nodules	N
2949	BBJ-09	Figure No. 12	float	629851	5828790	1 Olivine basalt	N
2950	BBJ-9a	Figure No. 12	float	629851	5828790	1 Olivine basalt	N
2951	BBJ-9b	Figure No. 12	float	629851	5828790	1 Olivine basalt	N
2952	BBJ-10	Figure No. 12	float	629918	5828800	1 Basalt with olivine phenocrysts and nodules	N
2953	BBJ-10a	Figure No. 12	float	629918	5828800	1 Basalt with olivine phenocrysts and nodules	N
2954	BBJ-10b	Figure No. 12	float	629918	5828800	1 Basalt with olivine phenocrysts and nodules	N
2955	BBJ-11	Figure No. 12	float	630004	5828767	1 Basalt with olivine phenocrysts and nodules	N
2956	BBJ-11a	Figure No. 12	float	630004	5828767	1 Basalt with olivine phenocrysts and nodules	N
2957	BBJ-11b	Figure No. 12	float	630004	5828767	1 Basalt with olivine phenocrysts and nodules	N
2958	BBJ-12	Figure No. 12	float	630114	5828753	1 Olivine basalt	N
2959	BBJ-12a	Figure No. 12	float	630114	5828753	1 Olivine basalt	N
2960	BBJ-12b	Figure No. 12	float	630114	5828753	1 Olivine basalt	N



APPENDIX G

**Cariboo Property - (Frank Ace, BBE)
Maps and XRF Data Tables**

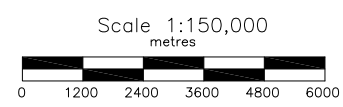


UTM Coordinate System
 Map Datum: NAD 83
 Zone: 10

LEGEND

-  Creek, Pond
-  Road

For Frank Area see Figure No. 10
 For Ace Area see Figure No. 11
 For Black Bear East Area see Figure No. 12



BARKER MINERALS LTD.

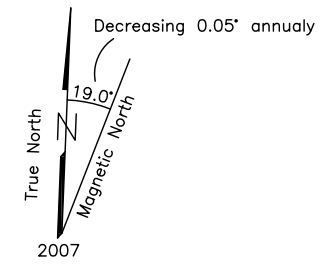
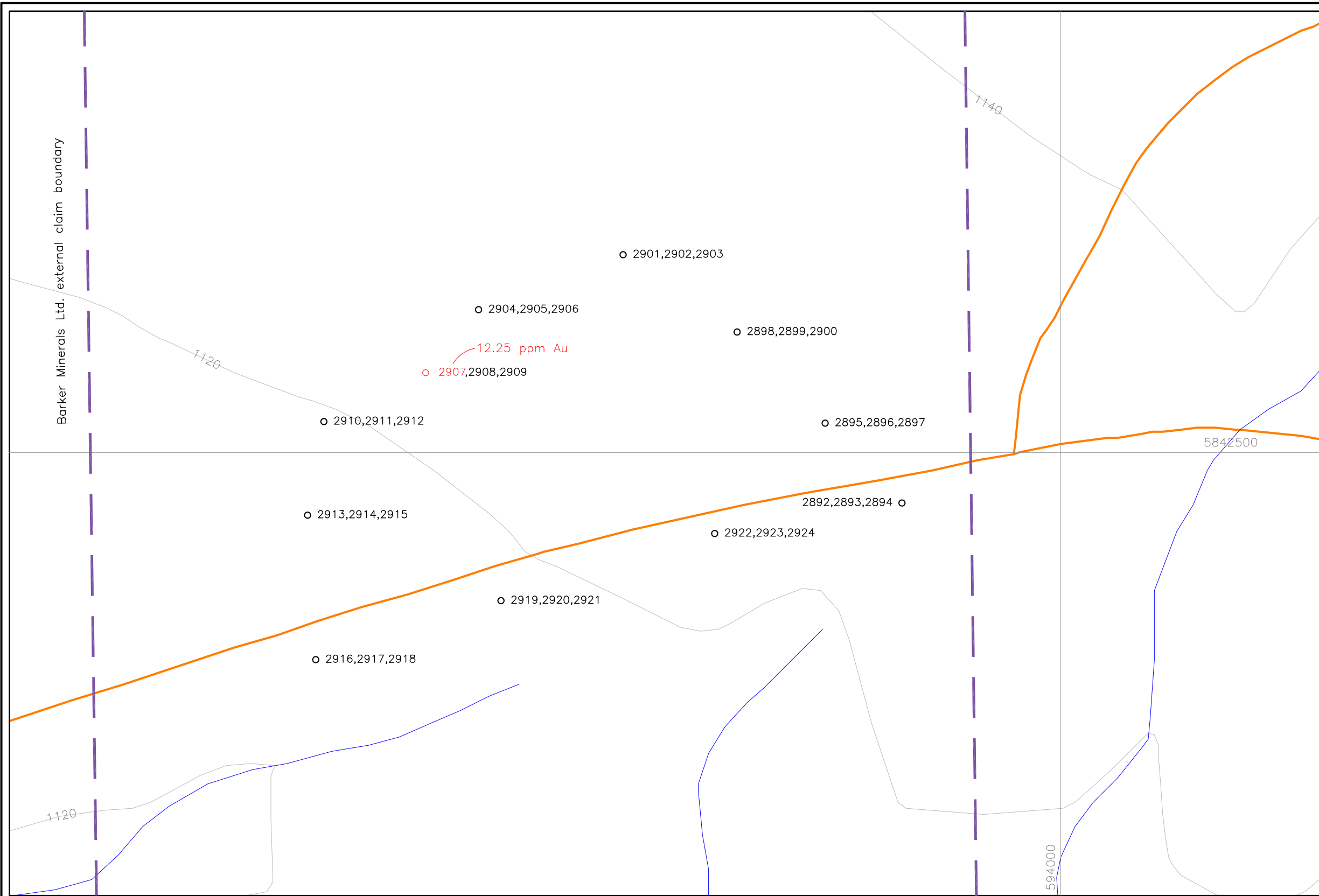
CARIBOO PROPERTY
 Keymap
 of Frank, Ace, Black Bear East Areas

Cariboo Mining Division, B.C.

NTS Mapsheet: 93 A/14

Date: June XXX, 2020

Figure No. 9



UTM Coordinate System
 Map Datum: NAD 83
 Zone: 10

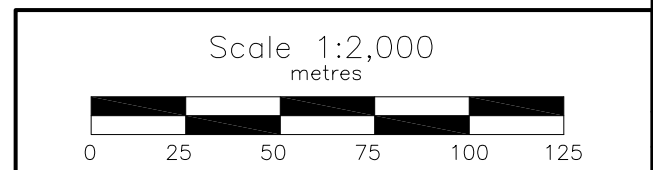
Frank Area - Rock Samples XRF Results (ppm)

XRF No.	Zn	Cu	Au
2892	321	286	
2893	185	157	
2894	203	222	
2895	296	53	
2896	266	73	
2897	183	75	
2898	725	309	
2899	161	131	
2900	22	23	
2901	70	197	
2902	39	56	
2903	371	1157	
2904	14	40	
2905	74	49	
2906	144	518	
2907	977	964	12.25
2908	2268	2283	
2909	2483	4089	
2910	526	290	
2911	146	99	
2912	1017	634	
2913	224	258	
2914	24	57	
2915	146	240	
2916	202		
2917	322		
2918	227		
2919	465	335	
2920	665	370	
2921	118	108	
2922	19	43	
2923	21		
2924	17		

Results below level of detection are not shown.
 Zn, Cu results over 150 ppm marked in red.
 Au results over level of detection marked in red.
 See Table No. 3 for XRF results.

LEGEND

- Topographic Contour & Elevation
Contour interval 20 metres
- Creek, Pond
- Road
- Multiple rock samples location and numbers



BARKER MINERALS LTD.

FRANK AREA
 FRJ Location

Rock Sample Locations, Numbers
 Zn and Cu Geochemistry
 Cariboo Mining Division, B.C.

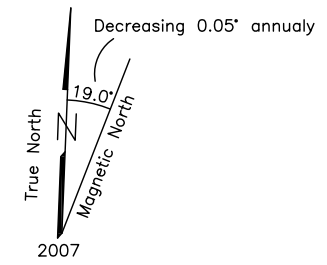
NTS Mapsheet: 93 A/14

Date: June XXX, 2020

Figure No. 10

Table No. 3
Frank Sampling Results

XRF No.	Fig. No.	Type	Units	Field No.	Mo	Zr	Sr	U	Rb	Th	Pb	Se	As	Hg	Au	Zn	W	Cu	Ni	Co	Fe	Mn	Sb	Sn	Cd	Ag	Nb	Y	Bi	Cr	V	Ti		
					In all cases <LOD means below level of detection.										Values for Au are highlighted.					The units of measurement for each element analysed are in parts per million (ppm).														
					Values above 150 ppm are highlighted red for Zn, Cu.																													
					flt = float rock																													
2892	Fig. No. 10	flt	ppm	FRJ-01	9	29	8 < LOD	6 < LOD	227 < LOD	93 < LOD	< LOD	< LOD	< LOD	< LOD	< LOD	321 < LOD	286 < LOD	< LOD	< LOD	60213	329 < LOD	< LOD	< LOD	< LOD	< LOD	< LOD	< LOD	< LOD	< LOD	< LOD	< LOD	< LOD	< LOD	
2893	Fig. No. 10	flt	ppm	FRJ-01a	12	82	16 < LOD	16 < LOD	78 < LOD	70 < LOD	< LOD	< LOD	< LOD	< LOD	< LOD	185 < LOD	157	186 < LOD	26412	< LOD	< LOD	< LOD	< LOD	< LOD	< LOD	8	2 < LOD	< LOD	< LOD	< LOD	< LOD	225		
2894	Fig. No. 10	flt	ppm	FRJ-01b	21	112	16	9	45	13	146 < LOD	102 < LOD	< LOD	< LOD	< LOD	203 < LOD	222	159 < LOD	29727	315 < LOD	< LOD	< LOD	< LOD	< LOD	12	7 < LOD	268 < LOD	< LOD	< LOD	2740				
2895	Fig. No. 10	flt	ppm	FRJ-02	< LOD	29	114 < LOD	< LOD	< LOD	< LOD	< LOD	< LOD	20 < LOD	< LOD	< LOD	296 < LOD	53	833 < LOD	66010	877 < LOD	< LOD	< LOD	< LOD	< LOD	6 < LOD	< LOD	2428	126	2960					
2896	Fig. No. 10	flt	ppm	FRJ-02a	< LOD	22	194 < LOD	3 < LOD	< LOD	< LOD	< LOD	30 < LOD	< LOD	< LOD	< LOD	266 < LOD	73	1374 < LOD	166445	4242 < LOD	< LOD	< LOD	< LOD	< LOD	5 < LOD	< LOD	2319	152	2532					
2897	Fig. No. 10	flt	ppm	FRJ-02b	< LOD	30	148 < LOD	3 < LOD	< LOD	< LOD	< LOD	53 < LOD	< LOD	< LOD	< LOD	183 < LOD	75	847 < LOD	75685	3084 < LOD	< LOD	< LOD	< LOD	< LOD	5 < LOD	< LOD	3217	154	3092					
2898	Fig. No. 10	flt	ppm	FRJ-03	< LOD	31	16	14	8 < LOD	196 < LOD	151 < LOD	< LOD	< LOD	< LOD	< LOD	725 < LOD	309	200 < LOD	172700	983	21 < LOD	< LOD	< LOD	< LOD	< LOD	< LOD	37 < LOD	< LOD	2958					
2899	Fig. No. 10	flt	ppm	FRJ-03a	< LOD	4	3 < LOD	5 < LOD	98 < LOD	31 < LOD	< LOD	< LOD	< LOD	< LOD	< LOD	161 < LOD	131	< LOD	30025	613 < LOD	< LOD	< LOD	< LOD	< LOD	< LOD	< LOD	< LOD	59 < LOD	431					
2900	Fig. No. 10	flt	ppm	FRJ-03b	< LOD	< LOD	2 < LOD	< LOD	< LOD	20 < LOD	< LOD	8 < LOD	22 < LOD	23 < LOD	< LOD	< LOD	< LOD	1360	59 < LOD	< LOD	< LOD	< LOD	< LOD	< LOD	< LOD	< LOD	< LOD	< LOD	< LOD	215				
2901	Fig. No. 10	flt	ppm	FRJ-04	< LOD	87	13 < LOD	38	11	598 < LOD	76 < LOD	< LOD	< LOD	< LOD	< LOD	70 < LOD	197	< LOD	9150	108 < LOD	< LOD	< LOD	< LOD	< LOD	13	3 < LOD	220 < LOD	3130						
2902	Fig. No. 10	flt	ppm	FRJ-04a	5	143	63	10	60	19	36 < LOD	15 < LOD	< LOD	< LOD	< LOD	39 < LOD	56	< LOD	13439	165 < LOD	< LOD	< LOD	< LOD	< LOD	19	7 < LOD	190 < LOD	3617						
2903	Fig. No. 10	flt	ppm	FRJ-04b	50	408	51	33	63	29 < LOD	19	726 < LOD	< LOD	< LOD	< LOD	371 < LOD	1157	201 < LOD	123218	< LOD	71	45 < LOD	< LOD	< LOD	42	13 < LOD	813 < LOD	13085						
2904	Fig. No. 10	flt	ppm	FRJ-05	< LOD	< LOD	< LOD	< LOD	< LOD	< LOD	< LOD	< LOD	< LOD	< LOD	< LOD	14 < LOD	40	< LOD	79230	< LOD	< LOD	< LOD	< LOD	< LOD	< LOD	< LOD	< LOD	< LOD	< LOD	< LOD	< LOD			
2905	Fig. No. 10	flt	ppm	FRJ-05a	< LOD	< LOD	139 < LOD	< LOD	< LOD	< LOD	< LOD	< LOD	< LOD	< LOD	< LOD	74 < LOD	49	142 < LOD	185018	2666	27 < LOD	< LOD	< LOD	< LOD	< LOD	< LOD	< LOD	< LOD	< LOD	< LOD				
2906	Fig. No. 10	flt	ppm	FRJ-05b	< LOD	18	36	7	2 < LOD	< LOD	< LOD	< LOD	< LOD	< LOD	< LOD	144 < LOD	518	< LOD	117950	< LOD	< LOD	< LOD	< LOD	< LOD	< LOD	< LOD	< LOD	102	120	337				
2907	Fig. No. 10	flt	ppm	FRJ-06	13	119	25	16	85	15	296	11	156 < LOD	12.25	977 < LOD	964	169 < LOD	81702	318 < LOD	108 < LOD	< LOD	< LOD	< LOD	11	3 < LOD	< LOD	< LOD	< LOD	2629					
2908	Fig. No. 10	flt	ppm	FRJ-06a	85	270	29	43	37 < LOD	2129	19	446 < LOD	< LOD	< LOD	< LOD	2268 < LOD	2283	235 < LOD	288046	< LOD	< LOD	120 < LOD	< LOD	34	5 < LOD	184 < LOD	2588							
2909	Fig. No. 10	flt	ppm	FRJ-06b	40	152	27	32	14	16	1055 < LOD	312 < LOD	< LOD	< LOD	< LOD	2483 < LOD	4089	315 < LOD	258918	4089	85	140 < LOD	< LOD	16	11 < LOD	213 < LOD	2673							
2910	Fig. No. 10	flt	ppm	FRJ-07	< LOD	18	5	12	3 < LOD	1772 < LOD	235 < LOD	< LOD	< LOD	< LOD	< LOD	526 < LOD	290	134 < LOD	107073	249 < LOD	< LOD	< LOD	< LOD	< LOD	< LOD	< LOD	< LOD	< LOD	< LOD	515				
2911	Fig. No. 10	flt	ppm	FRJ-07a	< LOD	8	2 < LOD	< LOD	< LOD	313 < LOD	65 < LOD	< LOD	< LOD	< LOD	< LOD	146 < LOD	99	< LOD	39571	< LOD	< LOD	< LOD	< LOD	< LOD	< LOD	17	125 < LOD	874						
2912	Fig. No. 10	flt	ppm	FRJ-07b	< LOD	35	15	28	6 < LOD	2879 < LOD	322 < LOD	< LOD	< LOD	< LOD	< LOD	1017 < LOD	634	227 < LOD	208516	< LOD	135	115 < LOD	< LOD	< LOD	< LOD	33 < LOD	< LOD	< LOD	< LOD					
2913	Fig. No. 10	flt	ppm	FRJ-08	20	116	22	9	4 < LOD	< LOD	< LOD	< LOD	< LOD	< LOD	< LOD	224 < LOD	258	< LOD	169958	1945 < LOD	< LOD	< LOD	< LOD	9 < LOD	< LOD	141	308	943						
2914	Fig. No. 10	flt	ppm	FRJ-08a	< LOD	< LOD	< LOD	< LOD	< LOD	< LOD	< LOD	< LOD	< LOD	< LOD	< LOD	24 < LOD	57	< LOD	38487	855 < LOD	< LOD	< LOD	< LOD	< LOD	< LOD	< LOD	< LOD	142 < LOD	< LOD					
2915	Fig. No. 10	flt	ppm	FRJ-08b	< LOD	8	6 < LOD	8 < LOD	< LOD	< LOD	8 < LOD	< LOD	< LOD	< LOD	< LOD	146 < LOD	240	< LOD	141226	< LOD	< LOD	< LOD	< LOD	< LOD	< LOD	< LOD	70	124	< LOD					
2916	Fig. No. 10	flt	ppm	FRJ-09	< LOD	< LOD	47 < LOD	< LOD	< LOD	< LOD	< LOD	< LOD	< LOD	< LOD	< LOD	202 < LOD	< LOD	< LOD	264904	5006 < LOD	< LOD	< LOD	< LOD	< LOD	< LOD	< LOD	< LOD	< LOD	< LOD	< LOD				
2917	Fig. No. 10	flt	ppm	FRJ-09a	< LOD	< LOD	82 < LOD	11 < LOD	150 < LOD	< LOD	< LOD	< LOD	< LOD	< LOD	< LOD	322 < LOD	< LOD	322 < LOD	412527	7140 < LOD	< LOD	< LOD	< LOD	< LOD	< LOD	45 < LOD	< LOD	< LOD	< LOD					
2918	Fig. No. 10	flt	ppm	FRJ-09b	< LOD	< LOD	17 < LOD	8 < LOD	54 < LOD	< LOD	< LOD	< LOD	< LOD	< LOD	< LOD	227	218	< LOD	384444	7066 < LOD	< LOD	< LOD	< LOD	< LOD	< LOD	< LOD	< LOD	< LOD	< LOD	< LOD				
2919	Fig. No. 10	flt	ppm	FRJ-10	4	56	11	10	14	7	299 < LOD	81 < LOD	< LOD	< LOD	< LOD	465 < LOD	335	< LOD	36367	164 < LOD	< LOD	< LOD	< LOD	6	2 < LOD	126 < LOD	1169							
2920	Fig. No. 10	flt	ppm	FRJ-10a	< LOD	31	17	18	7 < LOD	158 < LOD	228 < LOD	< LOD	< LOD	< LOD	< LOD	665 < LOD	370	206 < LOD	156254	3830	34 < LOD	< LOD	< LOD	< LOD	< LOD	31	125	114	1808					
2921	Fig. No. 10	flt	ppm	FRJ-10b	< LOD	< LOD	< LOD	< LOD	< LOD	18 < LOD	25 < LOD	< LOD	< LOD	< LOD	< LOD	118 < LOD	108	< LOD	13464	228 < LOD	< LOD	< LOD	< LOD	< LOD	< LOD	< LOD	42 < LOD	336						
2922	Fig. No. 10	flt	ppm	FRJ-11	< LOD	< LOD	8 < LOD	< LOD	< LOD	< LOD	< LOD	< LOD	76	9 < LOD	19 < LOD	43	< LOD	21794	139 < LOD	< LOD	< LOD	< LOD	< LOD	< LOD	< LOD	29 < LOD	< LOD	< LOD						
2923	Fig. No. 10	flt	ppm	FRJ-11a	< LOD	< LOD	8 < LOD	< LOD	< LOD	< LOD	< LOD	< LOD	40 < LOD	< LOD	< LOD	21 < LOD	< LOD	< LOD	15399	222 < LOD	< LOD	< LOD	< LOD	< LOD	< LOD	< LOD	< LOD	< LOD	< LOD	112				
2924	Fig. No. 10	flt	ppm	FRJ-11b	< LOD	< LOD	12 < LOD	< LOD	< LOD	< LOD	< LOD	< LOD	< LOD	< LOD	< LOD	17 < LOD	< LOD	< LOD	3076	181 < LOD	< LOD	< LOD	< LOD	< LOD	< LOD	< LOD	74 < LOD	113						



UTM Coordinate System
 Map Datum: NAD 83
 Zone: 10

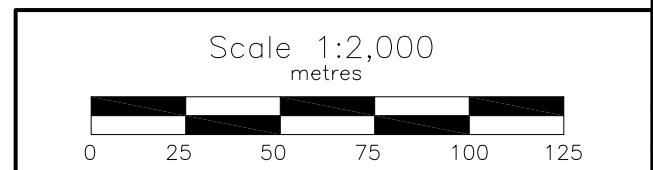
Ace Area - Rock Samples XRF Results (ppm)

XRF No.	Zn	Cu	Au
2856			
2857	33	36	
2858	91	88	
2859	88	84	
2860	35	57	
2861	64	147	
2862	96	26	
2863	67	31	
2864	92		
2865	70		
2866	88		
2867	99	32	
2868	49		
2869	78	87	
2870	165	41	
2871	81	144	
2872	48	46	
2873	86	147	
2874	131	35	
2875	74	116	
2876	71	62	
2877	37		
2878	192	37	
2879			
2880	27	51	
2881	67	75	
2882	41	35	13.82
2883	17		
2884	130	296	
2885	62	274	
2886	18	99	
2889	176	188	
2887	176	180	
2888	117	49	
2890	54	29	
2891	48	60	

Results below level of detection are not shown.
 Zn, Cu results over 150 ppm marked in red.
 Au results over level of detection marked in red.
 See Table No. 4 for XRF results.

LEGEND

- 1000 Topographic Contour & Elevation
Contour interval 20 metres
- Creek, Pond
- Road
- 2956,2957,2958 Multiple rock samples location and numbers



BARKER MINERALS LTD.

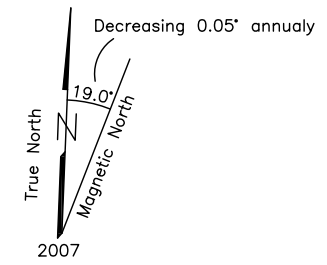
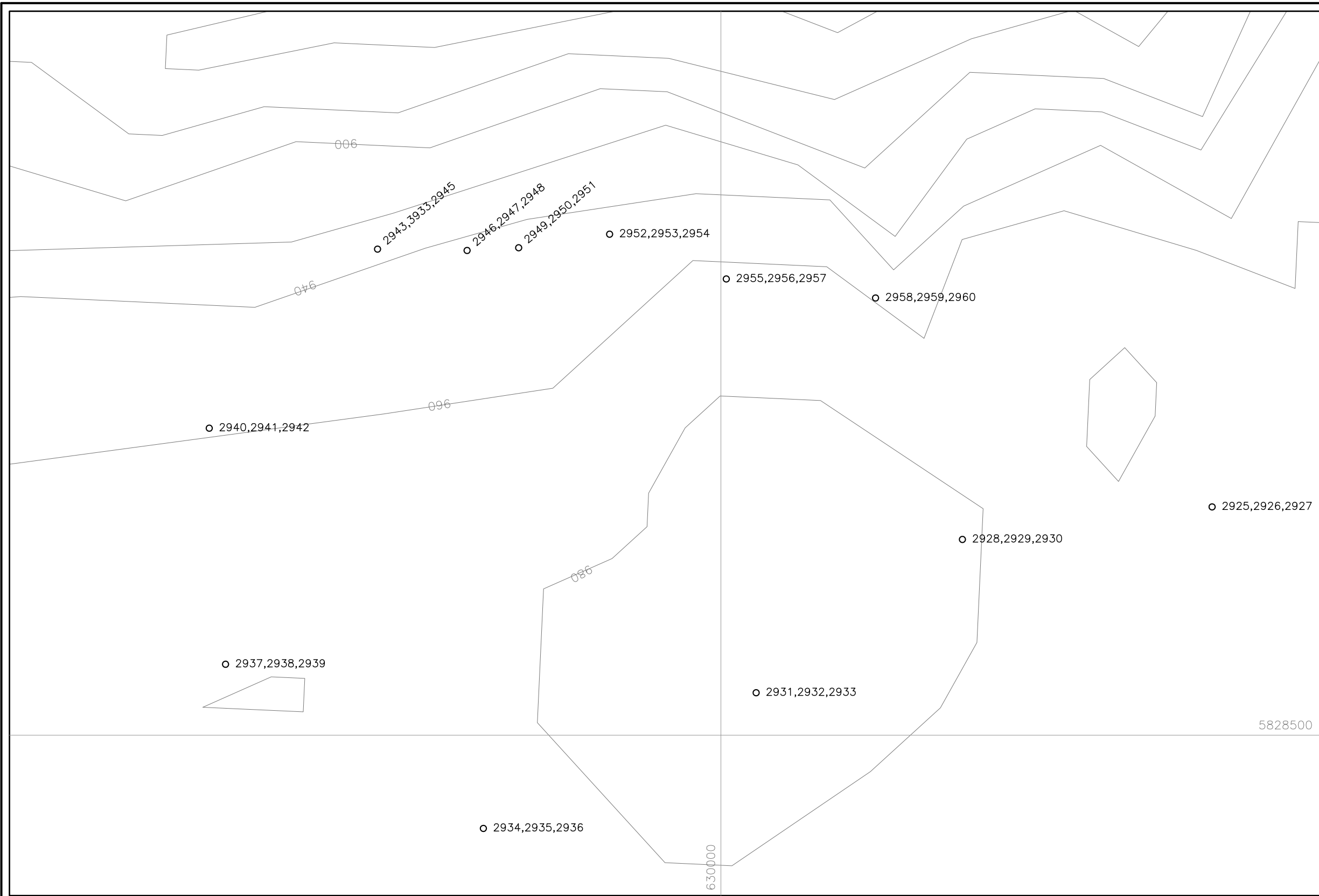
ACE AREA
 ACEJ Location

Rock Sample Locations, Numbers
 Zn and Cu Geochemistry
 Cariboo Mining Division, B.C.

NTS Mapsheet: 93 A/14 Date: June XXX, 2020
 Figure No. 11

Table No. 4
Ace Rock XRF Sampling Results

XRF No.	Fig. No.	Type	Units	Field No.	Mo	Zr	Sr	U	Rb	Th	Pb	Se	As	Hg	Au	Zn	W	Cu	Ni	Co	Fe	Mn	Sb	Sn	Cd	Ag	Nb	Y	Bi	Cr	V	Ti		
					In all cases <LOD means below level of detection.										Values for Au are highlighted.					The units of measurement for each element analysed are in parts per million (ppm).														
					Values above 150 ppm are highlighted red for Zn, Cu.																													
					flt = float rock																													
2856	Fig. No. 11	flt	ppm	ACEJ-01	< LOD	< LOD	< LOD	< LOD	< LOD	< LOD	< LOD	< LOD	< LOD	< LOD	< LOD	< LOD	< LOD	< LOD	< LOD	< LOD	< LOD	< LOD	< LOD	< LOD	< LOD	< LOD	< LOD	< LOD	< LOD	< LOD	< LOD	< LOD	< LOD	
2857	Fig. No. 11	flt	ppm	ACEJ-01a	< LOD	4	288	9	< LOD	< LOD	< LOD	< LOD	< LOD	< LOD	< LOD	< LOD	< LOD	< LOD	< LOD	< LOD	1965	< LOD	< LOD	< LOD	< LOD	< LOD	< LOD	< LOD	< LOD	< LOD	< LOD	< LOD	< LOD	1057
2858	Fig. No. 11	flt	ppm	ACEJ-01b	< LOD	25	9	< LOD	37	< LOD	< LOD	< LOD	< LOD	< LOD	< LOD	< LOD	< LOD	< LOD	< LOD	< LOD	89850	733	< LOD	< LOD	< LOD	< LOD	4	< LOD	21	120	< LOD	< LOD	7514	
2859	Fig. No. 11	flt	ppm	ACEJ-02	< LOD	92	46	< LOD	57	72	< LOD	< LOD	< LOD	< LOD	< LOD	< LOD	< LOD	< LOD	< LOD	< LOD	72780	614	< LOD	< LOD	< LOD	< LOD	7	2	< LOD	220	189	5491		
2860	Fig. No. 11	flt	ppm	ACEJ-02a	< LOD	< LOD	< LOD	< LOD	< LOD	< LOD	< LOD	< LOD	< LOD	< LOD	< LOD	< LOD	< LOD	< LOD	< LOD	< LOD	21687	97	< LOD	< LOD	< LOD	< LOD	< LOD	< LOD	< LOD	< LOD	< LOD	85	< LOD	357
2861	Fig. No. 11	flt	ppm	ACEJ-02b	< LOD	4	299	14	2	< LOD	57	< LOD	< LOD	< LOD	< LOD	< LOD	< LOD	< LOD	< LOD	< LOD	91155	890	< LOD	< LOD	< LOD	< LOD	< LOD	< LOD	< LOD	< LOD	< LOD	< LOD	< LOD	< LOD
2862	Fig. No. 11	flt	ppm	ACEJ-03	< LOD	81	103	< LOD	82	16	< LOD	< LOD	< LOD	< LOD	< LOD	< LOD	< LOD	< LOD	< LOD	< LOD	46181	< LOD	< LOD	< LOD	< LOD	< LOD	11	4	< LOD	99	< LOD	1753		
2863	Fig. No. 11	flt	ppm	ACEJ-03a	11	44	101	< LOD	58	11	< LOD	< LOD	< LOD	< LOD	< LOD	< LOD	< LOD	< LOD	< LOD	< LOD	18907	398	< LOD	< LOD	< LOD	< LOD	10	< LOD	< LOD	< LOD	< LOD	< LOD	< LOD	
2864	Fig. No. 11	flt	ppm	ACEJ-03b	< LOD	94	148	< LOD	96	19	< LOD	< LOD	< LOD	< LOD	< LOD	< LOD	< LOD	< LOD	< LOD	< LOD	58612	< LOD	< LOD	< LOD	< LOD	< LOD	11	< LOD	< LOD	77	< LOD	1752		
2865	Fig. No. 11	flt	ppm	ACEJ-04	< LOD	68	757	15	27	< LOD	< LOD	< LOD	< LOD	< LOD	< LOD	< LOD	< LOD	< LOD	< LOD	< LOD	26135	< LOD	< LOD	< LOD	< LOD	< LOD	6	2	< LOD	< LOD	< LOD	< LOD	< LOD	
2866	Fig. No. 11	flt	ppm	ACEJ-04a	< LOD	102	663	14	46	15	< LOD	< LOD	< LOD	< LOD	< LOD	< LOD	< LOD	< LOD	< LOD	< LOD	33231	< LOD	< LOD	< LOD	< LOD	< LOD	13	2	< LOD	< LOD	< LOD	< LOD	< LOD	
2867	Fig. No. 11	flt	ppm	ACEJ-04b	< LOD	157	1295	27	46	15	< LOD	< LOD	< LOD	< LOD	< LOD	< LOD	< LOD	< LOD	< LOD	< LOD	31492	669	< LOD	< LOD	< LOD	< LOD	9	3	< LOD	< LOD	< LOD	< LOD	2831	
2868	Fig. No. 11	flt	ppm	ACEJ-05	< LOD	250	1191	28	58	45	< LOD	< LOD	< LOD	< LOD	< LOD	< LOD	< LOD	< LOD	< LOD	< LOD	35857	< LOD	< LOD	< LOD	< LOD	< LOD	43	6	< LOD	< LOD	< LOD	< LOD	4774	
2869	Fig. No. 11	flt	ppm	ACEJ-05a	< LOD	265	967	20	39	43	< LOD	< LOD	< LOD	< LOD	< LOD	< LOD	< LOD	< LOD	< LOD	< LOD	72747	< LOD	< LOD	< LOD	< LOD	< LOD	79	6	< LOD	< LOD	< LOD	< LOD	3281	
2870	Fig. No. 11	flt	ppm	ACEJ-05b	< LOD	251	1290	22	58	38	< LOD	< LOD	< LOD	< LOD	< LOD	< LOD	< LOD	< LOD	< LOD	< LOD	54534	< LOD	< LOD	< LOD	< LOD	< LOD	30	6	< LOD	88	< LOD	2649		
2871	Fig. No. 11	flt	ppm	ACEJ-06	< LOD	100	56	< LOD	48	14	< LOD	< LOD	< LOD	< LOD	< LOD	< LOD	< LOD	< LOD	< LOD	< LOD	66911	< LOD	< LOD	< LOD	< LOD	< LOD	5	< LOD	< LOD	104	< LOD	1417		
2872	Fig. No. 11	flt	ppm	ACEJ-06a	< LOD	47	64	< LOD	26	< LOD	< LOD	< LOD	< LOD	< LOD	< LOD	< LOD	< LOD	< LOD	< LOD	< LOD	72932	338	< LOD	< LOD	< LOD	< LOD	3	< LOD	< LOD	< LOD	< LOD	< LOD	< LOD	
2873	Fig. No. 11	flt	ppm	ACEJ-06b	< LOD	141	75	< LOD	53	14	< LOD	< LOD	< LOD	< LOD	< LOD	< LOD	< LOD	< LOD	< LOD	< LOD	84553	< LOD	< LOD	< LOD	< LOD	< LOD	12	< LOD	< LOD	119	140	3240		
2874	Fig. No. 11	flt	ppm	ACEJ-07	< LOD	207	176	13	30	15	< LOD	< LOD	< LOD	< LOD	< LOD	< LOD	< LOD	< LOD	< LOD	< LOD	112260	< LOD	47	35	< LOD	< LOD	49	2	< LOD	277	< LOD	33944		
2875	Fig. No. 11	flt	ppm	ACEJ-07a	< LOD	364	267	9	19	30	40	< LOD	< LOD	< LOD	< LOD	< LOD	< LOD	< LOD	< LOD	< LOD	78369	460	< LOD	< LOD	< LOD	< LOD	16	2	< LOD	< LOD	< LOD	< LOD	2801	
2876	Fig. No. 11	flt	ppm	ACEJ-07b	< LOD	695	98	9	89	35	34	< LOD	< LOD	< LOD	< LOD	< LOD	< LOD	< LOD	< LOD	< LOD	35706	511	< LOD	< LOD	< LOD	< LOD	31	2	< LOD	< LOD	< LOD	< LOD	3772	
2877	Fig. No. 11	flt	ppm	ACEJ-08	< LOD	< LOD	< LOD	< LOD	< LOD	< LOD	< LOD	< LOD	< LOD	< LOD	< LOD	< LOD	< LOD	< LOD	< LOD	< LOD	45901	265	< LOD	< LOD	< LOD	< LOD	< LOD	< LOD	< LOD	< LOD	< LOD	< LOD	< LOD	
2878	Fig. No. 11	flt	ppm	ACEJ-08a	< LOD	< LOD	121	< LOD	< LOD	< LOD	< LOD	< LOD	< LOD	< LOD	< LOD	< LOD	< LOD	< LOD	< LOD	< LOD	50786	448	< LOD	< LOD	< LOD	< LOD	7	< LOD	< LOD	< LOD	282	2476		
2879	Fig. No. 11	flt	ppm	ACEJ-08b	< LOD	< LOD	< LOD	< LOD	< LOD	< LOD	< LOD	< LOD	< LOD	< LOD	< LOD	< LOD	< LOD	< LOD	< LOD	< LOD	844	< LOD	< LOD	< LOD	< LOD	< LOD	< LOD	< LOD	< LOD	< LOD	< LOD	< LOD	< LOD	
2880	Fig. No. 11	flt	ppm	ACEJ-09	< LOD	3	3	6	< LOD	< LOD	< LOD	7	< LOD	< LOD	< LOD	< LOD	< LOD	< LOD	< LOD	< LOD	138579	1320	< LOD	< LOD	< LOD	< LOD	< LOD	< LOD	< LOD	72	76	< LOD		
2881	Fig. No. 11	flt	ppm	ACEJ-09a	< LOD	18	12	10	< LOD	< LOD	< LOD	< LOD	< LOD	< LOD	< LOD	< LOD	< LOD	< LOD	< LOD	< LOD	141949	< LOD	< LOD	< LOD	< LOD	< LOD	< LOD	< LOD	< LOD	< LOD	< LOD	< LOD	< LOD	
2882	Fig. No. 11	flt	ppm	ACEJ-09b	< LOD	< LOD	2	< LOD	< LOD	< LOD	< LOD	< LOD	< LOD	< LOD	14	13.82	41	< LOD	35	215	< LOD	206954	1669	50	37	< LOD	< LOD	< LOD	< LOD	< LOD	< LOD	< LOD	< LOD	
2883	Fig. No. 11	flt	ppm	ACEJ-10	< LOD	5	3	< LOD	< LOD	< LOD	< LOD	< LOD	< LOD	< LOD	< LOD	< LOD	< LOD	< LOD	< LOD	< LOD	119078	< LOD	< LOD	< LOD	< LOD	< LOD	< LOD	< LOD	< LOD	< LOD	< LOD	< LOD	< LOD	
2884	Fig. No. 11	flt	ppm	ACEJ-10a	373	135	15	17	37	21	< LOD	15	< LOD	< LOD	< LOD	< LOD	< LOD	< LOD	< LOD	< LOD	146642	< LOD	< LOD	43	< LOD	< LOD	24	9	< LOD	< LOD	488	1624		
2885	Fig. No. 11	flt	ppm	ACEJ-10b	42	58	7	20	10	14	< LOD	< LOD	< LOD	< LOD	< LOD	< LOD	< LOD	< LOD	< LOD	< LOD	239860	< LOD	38	51	< LOD	< LOD	< LOD	< LOD	< LOD	< LOD	< LOD	< LOD	< LOD	
2886	Fig. No. 11	flt	ppm	ACEJ-11	< LOD	< LOD	< LOD	< LOD	< LOD	< LOD	< LOD	< LOD	< LOD	< LOD	< LOD	< LOD	< LOD	< LOD	< LOD	< LOD	33491	338	< LOD	< LOD	< LOD	< LOD	< LOD	< LOD	< LOD	< LOD	< LOD	< LOD	< LOD	
2889	Fig. No. 11	flt	ppm	ACEJ-11a	< LOD	< LOD	57	7	< LOD	< LOD	< LOD	< LOD	< LOD	< LOD	< LOD	< LOD	< LOD	< LOD	< LOD	< LOD	145204	1842	26	< LOD	< LOD	< LOD	< LOD	< LOD	< LOD	< LOD	< LOD	< LOD	< LOD	
2887	Fig. No. 11	flt	ppm	ACEJ-11b	26	210	83	40	29	19	< LOD	24	< LOD	< LOD	< LOD	< LOD	< LOD	< LOD	< LOD	< LOD	140681	< LOD	52	72	< LOD	< LOD	31	3	< LOD	163	378	4617		
2888	Fig. No. 11	flt	ppm	ACEJ-12	< LOD	370	1639	37	47	60	< LOD	< LOD	< LOD	< LOD	< LOD	< LOD	< LOD	< LOD	< LOD	< LOD	85768	< LOD	< LOD	< LOD	< LOD	< LOD	24	7	< LOD	< LOD	< LOD	< LOD	3596	
2890	Fig. No. 11	flt	ppm	ACEJ-12a	< LOD	251	1672	34	23	55	25	< LOD	< LOD	< LOD	< LOD	< LOD	< LOD	< LOD	< LOD	< LOD	30022	< LOD	< LOD	< LOD	< LOD	< LOD	15	7	< LOD	60	39	2266		
2891	Fig. No. 11	flt	ppm	ACEJ-12b	< LOD	166	1051	16	24	41	< LOD	< LOD	< LOD	< LOD	< LOD	< LOD	< LOD	< LOD	< LOD	< LOD	21603	< LOD	< LOD	< LOD	< LOD	< LOD	11	2	< LOD	70	< LOD	544		



UTM Coordinate System
 Map Datum: NAD 83
 Zone: 10

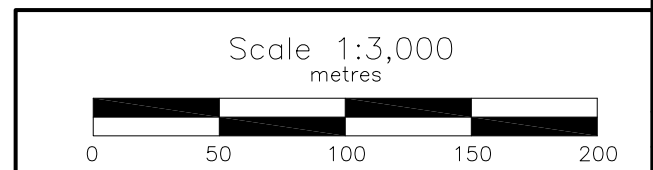
Black Bear East Area - Rock Samples XRF Results (ppm)

XRF No.	Zn	Cu
2925	92	89
2926	105	74
2927	115	41
2928	72	117
2929	109	70
2930	110	74
2931	125	67
2932	107	63
2933	87	44
2934	85	32
2935	97	53
2936	113	73
2937	57	
2938	67	38
2939	110	79
2940	50	46
2941	117	71
2942	88	
2943	56	
2944	51	34
2945	88	78
2946	71	
2947	90	58
2948	91	60
2949	57	
2950	85	66
2951	63	
2952	68	51
2953	59	37
2954	85	38
2955	53	
2956	103	34
2957	50	48
2958	92	47
2959	82	62
2960	126	46

Results below level of detection are not shown.
 Zn, Cu results over 150 ppm marked in red.
 See Table No. 5 for XRF results.

LEGEND

- 1000 Topographic Contour & Elevation
Contour interval 20 metres
- Creek, Pond
- Road
- 2925,2926,2927 Multiple rock samples location and numbers



BARKER MINERALS LTD.

BLACK BEAR EAST AREA
 BBJ Locarion

Rock Sample Locations, Numbers
 Zn and Cu Geochemistry
 Cariboo Mining Division, B.C.

NTS Mapsheet: 93 A/14 Date: June XXX, 2020

Figure No. 12

Table No. 5
Black Bear East Rock XRF Sampling Results

XRF No.	Fig. No.	Type	Units	Field No.	Mo	Zr	Sr	U	Rb	Th	Pb	Se	As	Hg	Au	Zn	W	Cu	Ni	Co	Fe	Mn	Sb	Sn	Cd	Ag	Nb	Y	Bi	Cr	V	Ti				
					In all cases <LOD means below level of detection.										Values for Au are highlighted.					The units of measurement for each element analysed are in parts per million (ppm).																
					Values above 150 ppm are highlighted red for Zn, Cu.																															
					flt = float rock																															
2925	Fig. No. 12	flt	ppm	BBJ-01	5	177	613	17	9	24	< LOD	< LOD	< LOD	< LOD	< LOD	92	< LOD	89	168	< LOD	72379	< LOD	< LOD	< LOD	< LOD	< LOD	41	3	< LOD	232	< LOD	6148				
2926	Fig. No. 12	flt	ppm	BBJ-01a	< LOD	171	606	< LOD	9	< LOD	< LOD	< LOD	< LOD	< LOD	< LOD	105	< LOD	74	209	< LOD	76115	< LOD	< LOD	< LOD	< LOD	< LOD	40	2	< LOD	296	< LOD	6960				
2927	Fig. No. 12	flt	ppm	BBJ-01b	< LOD	97	356	11	4	< LOD	< LOD	< LOD	< LOD	< LOD	< LOD	115	< LOD	41	1015	< LOD	72189	< LOD	< LOD	< LOD	< LOD	< LOD	23	2	< LOD	678	< LOD	5435				
2928	Fig. No. 12	flt	ppm	BBJ-02	< LOD	88	325	< LOD	4	< LOD	< LOD	< LOD	< LOD	< LOD	< LOD	72	< LOD	117	1244	< LOD	75655	< LOD	< LOD	< LOD	< LOD	< LOD	19	2	< LOD	697	< LOD	3433				
2929	Fig. No. 12	flt	ppm	BBJ-02a	< LOD	55	213	< LOD	3	< LOD	30	< LOD	10	< LOD	< LOD	109	< LOD	70	1179	< LOD	70036	< LOD	< LOD	< LOD	< LOD	< LOD	16	< LOD	< LOD	907	105	3367				
2930	Fig. No. 12	flt	ppm	BBJ-02b	5	157	708	12	6	< LOD	< LOD	< LOD	< LOD	< LOD	< LOD	110	< LOD	74	313	< LOD	77462	< LOD	< LOD	< LOD	< LOD	< LOD	38	2	< LOD	295	165	8391				
2931	Fig. No. 12	flt	ppm	BBJ-03	< LOD	147	644	< LOD	5	< LOD	< LOD	< LOD	< LOD	< LOD	< LOD	125	< LOD	67	207	< LOD	73475	< LOD	< LOD	< LOD	< LOD	< LOD	35	3	< LOD	185	81	4227				
2932	Fig. No. 12	flt	ppm	BBJ-03a	< LOD	154	608	9	7	< LOD	< LOD	< LOD	< LOD	< LOD	< LOD	107	< LOD	63	336	< LOD	74068	< LOD	< LOD	< LOD	< LOD	< LOD	36	2	< LOD	246	< LOD	6356				
2933	Fig. No. 12	flt	ppm	BBJ-03b	4	141	545	15	6	< LOD	< LOD	< LOD	< LOD	< LOD	< LOD	87	< LOD	44	242	< LOD	75121	< LOD	< LOD	< LOD	< LOD	< LOD	32	2	< LOD	206	177	6424				
2934	Fig. No. 12	flt	ppm	BBJ-04	< LOD	17	58	< LOD	2	< LOD	< LOD	< LOD	< LOD	< LOD	< LOD	85	< LOD	32	1215	< LOD	66519	1044	< LOD	< LOD	< LOD	< LOD	4	< LOD	< LOD	989	56	1305				
2935	Fig. No. 12	flt	ppm	BBJ-04a	< LOD	152	687	10	6	< LOD	< LOD	< LOD	< LOD	< LOD	< LOD	97	< LOD	53	240	< LOD	74898	< LOD	< LOD	< LOD	< LOD	< LOD	38	3	< LOD	221	< LOD	5714				
2936	Fig. No. 12	flt	ppm	BBJ-04b	< LOD	161	685	15	6	< LOD	< LOD	< LOD	< LOD	< LOD	< LOD	113	< LOD	73	437	< LOD	80813	< LOD	< LOD	< LOD	< LOD	< LOD	38	3	< LOD	226	< LOD	4136				
2937	Fig. No. 12	flt	ppm	BBJ-05	< LOD	29	69	< LOD	< LOD	< LOD	< LOD	< LOD	< LOD	< LOD	< LOD	57	< LOD	< LOD	1629	< LOD	79736	2613	< LOD	< LOD	< LOD	< LOD	6	< LOD	< LOD	541	< LOD	< LOD				
2938	Fig. No. 12	flt	ppm	BBJ-05a	< LOD	30	26	< LOD	< LOD	< LOD	< LOD	< LOD	< LOD	< LOD	< LOD	67	< LOD	38	1482	< LOD	83279	2180	< LOD	< LOD	< LOD	< LOD	< LOD	< LOD	< LOD	< LOD	< LOD	< LOD				
2939	Fig. No. 12	flt	ppm	BBJ-05b	< LOD	40	127	< LOD	2	< LOD	< LOD	< LOD	< LOD	< LOD	< LOD	110	< LOD	79	1176	< LOD	80146	< LOD	< LOD	< LOD	< LOD	< LOD	9	< LOD	< LOD	315	46	747				
2940	Fig. No. 12	flt	ppm	BBJ-06	< LOD	< LOD	19	< LOD	< LOD	< LOD	< LOD	< LOD	< LOD	< LOD	< LOD	50	< LOD	46	2026	< LOD	56815	< LOD	< LOD	< LOD	< LOD	< LOD	3	< LOD	< LOD	343	< LOD	< LOD				
2941	Fig. No. 12	flt	ppm	BBJ-06a	4	41	118	< LOD	2	6	< LOD	< LOD	< LOD	< LOD	< LOD	117	< LOD	71	1102	< LOD	90219	1233	< LOD	< LOD	< LOD	< LOD	9	< LOD	< LOD	676	< LOD	1808				
2942	Fig. No. 12	flt	ppm	BBJ-06b	< LOD	< LOD	14	< LOD	< LOD	< LOD	< LOD	< LOD	< LOD	< LOD	< LOD	88	< LOD	< LOD	1621	< LOD	63635	< LOD	< LOD	< LOD	< LOD	< LOD	< LOD	< LOD	< LOD	< LOD	1208	< LOD	208			
2943	Fig. No. 12	flt	ppm	BBJ-07	< LOD	6	36	< LOD	2	< LOD	< LOD	< LOD	< LOD	< LOD	< LOD	56	< LOD	< LOD	1952	< LOD	61494	< LOD	< LOD	< LOD	< LOD	< LOD	< LOD	< LOD	< LOD	< LOD	332	< LOD	526			
2944	Fig. No. 12	flt	ppm	BBJ-07a	< LOD	3	13	< LOD	< LOD	< LOD	< LOD	< LOD	< LOD	< LOD	< LOD	51	< LOD	34	1441	< LOD	55203	844	< LOD	< LOD	< LOD	< LOD	< LOD	< LOD	< LOD	< LOD	404	< LOD	906			
2945	Fig. No. 12	flt	ppm	BBJ-07b	< LOD	156	640	10	7	< LOD	< LOD	< LOD	< LOD	< LOD	< LOD	88	< LOD	78	235	< LOD	73541	< LOD	< LOD	< LOD	< LOD	< LOD	37	2	< LOD	256	146	6864				
2946	Fig. No. 12	flt	ppm	BBJ-08	< LOD	58	237	< LOD	3	< LOD	< LOD	< LOD	< LOD	< LOD	< LOD	71	< LOD	< LOD	1222	< LOD	66550	< LOD	< LOD	< LOD	< LOD	< LOD	18	< LOD	< LOD	326	77	3029				
2947	Fig. No. 12	flt	ppm	BBJ-08a	< LOD	106	415	< LOD	5	< LOD	< LOD	< LOD	< LOD	< LOD	< LOD	90	< LOD	58	869	< LOD	74545	2481	< LOD	< LOD	< LOD	< LOD	26	2	< LOD	357	< LOD	6325				
2948	Fig. No. 12	flt	ppm	BBJ-08b	< LOD	159	620	< LOD	8	19	< LOD	< LOD	< LOD	< LOD	< LOD	91	< LOD	60	189	< LOD	67495	< LOD	< LOD	< LOD	< LOD	< LOD	38	2	< LOD	201	< LOD	5741				
2949	Fig. No. 12	flt	ppm	BBJ-09	< LOD	< LOD	13	< LOD	< LOD	< LOD	< LOD	< LOD	< LOD	< LOD	< LOD	57	< LOD	< LOD	2289	< LOD	64501	< LOD	< LOD	< LOD	< LOD	< LOD	< LOD	< LOD	< LOD	< LOD	658	< LOD	< LOD			
2950	Fig. No. 12	flt	ppm	BBJ-9a	< LOD	132	525	18	3	17	< LOD	< LOD	7	< LOD	< LOD	85	< LOD	66	187	< LOD	68351	< LOD	< LOD	< LOD	< LOD	< LOD	29	2	< LOD	127	103	2486				
2951	Fig. No. 12	flt	ppm	BBJ-9b	< LOD	< LOD	18	< LOD	< LOD	< LOD	< LOD	< LOD	< LOD	< LOD	< LOD	63	< LOD	< LOD	1845	< LOD	56520	< LOD	< LOD	< LOD	< LOD	< LOD	< LOD	< LOD	< LOD	< LOD	384	< LOD	115			
2952	Fig. No. 12	flt	ppm	BBJ-10	< LOD	6	32	< LOD	< LOD	< LOD	< LOD	< LOD	< LOD	< LOD	< LOD	68	< LOD	51	1575	< LOD	59398	< LOD	< LOD	< LOD	< LOD	< LOD	< LOD	< LOD	< LOD	< LOD	802	< LOD	553			
2953	Fig. No. 12	flt	ppm	BBJ-10a	< LOD	6	41	< LOD	< LOD	< LOD	< LOD	< LOD	< LOD	< LOD	< LOD	59	< LOD	37	1803	< LOD	64821	< LOD	< LOD	< LOD	< LOD	< LOD	< LOD	< LOD	< LOD	1517	< LOD	886				
2954	Fig. No. 12	flt	ppm	BBJ-10b	< LOD	11	40	< LOD	< LOD	11	< LOD	< LOD	< LOD	< LOD	< LOD	85	< LOD	38	929	< LOD	50478	< LOD	< LOD	< LOD	< LOD	< LOD	5	< LOD	< LOD	583	55	539				
2955	Fig. No. 12	flt	ppm	BBJ-11	< LOD	< LOD	13	< LOD	< LOD	< LOD	< LOD	< LOD	< LOD	< LOD	< LOD	53	< LOD	< LOD	1806	< LOD	52855	< LOD	< LOD	< LOD	< LOD	< LOD	< LOD	< LOD	< LOD	< LOD	475	< LOD	341			
2956	Fig. No. 12	flt	ppm	BBJ-11a	< LOD	39	242	< LOD	3	< LOD	< LOD	< LOD	< LOD	< LOD	< LOD	103	< LOD	34	926	< LOD	61228	< LOD	< LOD	< LOD	< LOD	< LOD	10	< LOD	< LOD	2370	76	2279				
2957	Fig. No. 12	flt	ppm	BBJ-11b	< LOD	< LOD	19	< LOD	< LOD	< LOD	< LOD	< LOD	< LOD	< LOD	< LOD	50	< LOD	48	1509	< LOD	55056	< LOD	< LOD	< LOD	< LOD	< LOD	< LOD	< LOD	< LOD	< LOD	357	< LOD	840			
2958	Fig. No. 12	flt	ppm	BBJ-12	< LOD	51	149	< LOD	2	< LOD	57	< LOD	10	< LOD	< LOD	92	< LOD	47	1063	< LOD	74861	< LOD	< LOD	< LOD	< LOD	< LOD	12	< LOD	< LOD	539	98	2971				
2959	Fig. No. 12	flt	ppm	BBJ-12a	< LOD	110	444	< LOD	6	< LOD	< LOD	< LOD	< LOD	< LOD	< LOD	82	< LOD	62	561	< LOD	69704	< LOD	< LOD	< LOD	< LOD	< LOD	26	2	< LOD	749	< LOD	4114				
2960	Fig. No. 12	flt	ppm	BBJ-12b	< LOD	95	289	< LOD	5	< LOD	79	< LOD	13	< LOD	< LOD	126	< LOD	46	514	< LOD	68007	< LOD	< LOD	< LOD	< LOD	< LOD	21	2	< LOD	317	94	3631				