

**BC Geological Survey
Assessment Report
40499**



ASSESSMENT REPORT TITLE PAGE AND SUMMARY

**TITLE OF REPORT: Geological & Geochemical on the Frank Creek Property,
Cariboo Mining Division, British Columbia**

TOTAL COST: \$14,177.00

AUTHOR(S): Louis Doyle

SIGNATURE(S): "SIGNED"

NOTICE OF WORK PERMIT NUMBER(S)/DATE(S): MX-10-155 & MX-10-228

**STATEMENT OF WORK EVENT NUMBER(S)/DATE(S): 5941822 (May 25, 2022 to
July 3, 2022)**

YEAR OF WORK: 2022

PROPERTY NAME: Frank Creek Property

CLAIM NAME(S) (on which work was done)

FC22 (tenure # 1092638)

COMMODITIES SOUGHT: Copper, Lead, Zinc, Silver & Gold

MINERAL INVENTORY MINFILE NUMBER(S), IF KNOWN: N/K

MINING DIVISION: Cariboo

BCGS: 93A/11 and 93A/14

LATITUDE 52.66°

LONGITUDE 121.43°

UTM Zone NAD 83 EASTING 605900 NORTHING 5835200

OWNER(S): Barker Minerals Ltd.

MAILING ADDRESS: P33 Valley Rd. Box 53, 150 Mile House BC, V0K 2G0

OPERATOR(S) [who paid for the work]: Barker Minerals Ltd.

MAILING ADDRESS: P33 Valley Rd. Box 53, 150 Mile House BC, V0K 2G0

**REPORT KEYWORDS (lithology, age, stratigraphy, structure, alteration, mineralization,
size and attitude do not use abbreviations or codes)**

Barkerville Terrane, Silver & Gold

**REFERENCES TO PREVIOUS ASSESSMENT WORK AND ASSESSMENT REPORT
NUMBERS**

**9669, 9677, 10252, 10264, 11620, 13154, 15420, 15804, 17696, 19354, 21930, 22599,
22642, 24662, 25752, 26003, 26504, 26805, 27125, 27655, 28248, 28978, 29740, 30764.**

TYPE OF WORK IN THIS REPORT	EXTENT OF WORK (in metric units)	ON WHICH CLAIMS	PROJECT COSTS APPORTIONED (incl. support)
GEOLOGICAL (scale, area)			
Ground, mapping	N/A		
Photo interpretation	N/A		
GEOFYSICAL (line-kilometres)			
Ground	N/A		
Magnetic	N/A		
Electromagnetic	N/A		
Induced Polarization	N/A		
Radiometric	N/A		
Seismic	N/A		
Other	N/A		
Airborne	N/A		
GEOCHEMICAL (number of samples analysed for ...)			
Soil	N/A		
Silt	N/A		
Rock	N/A		
Till sediment	15	1092638	\$13,517.60
DRILLING (total metres, number of holes, size, storage location)			
Core	N/A		
Non-core	N/A		
RELATED TECHNICAL			
Sampling / Assaying	15	1092638	\$ 659.40
Petrographic	N/A		
Mineralographic	N/A		
Metallurgic	N/A		
PROSPECTING (scale/area)	N/A		
PREPATORY / PHYSICAL			
Line/grid (km)	N/A		
Topo/Photogrammetric (scale, area)	N/A		
Legal Surveys (scale, area)	N/A		
Road, local access (km)/trail	N/A		
Trench (number/metres)	N/A		
Underground development (metres)	N/A		
Other	N/A		
TOTAL COST			\$14,177.00

Mineral Titles Online

Mineral Claim Exploration and Development Work/Expiry Date Change Confirmation

Recorder: BARKER MINERALS LTD (140410) **Submitter:** BARKER MINERALS LTD (140410)
Recorded: 2022/JUL/05 **Effective:** 2022/JUL/05
D/E Date: 2022/JUL/05

Confirmation

If you have not yet submitted your report for this work program, your technical work report is due in 90 days. The Exploration and Development Work/Expiry Date Change event number is required with your report submission.

Please attach a copy of this confirmation page to your report. Contact Mineral Titles Branch for more information.

Event Number: 5941822
Work Type: Technical Work
Technical Items: Geochemical, Geological
Work Start Date: 2022/MAY/25
Work Stop Date: 2022/JUL/03
Total Value of Work: \$ 11000.00
Mine Permit No:

Summary of the work value:

Title Number	Claim Name	Issue Date	Good To Date	New Good To Date	# of Days Forward	Area in Ha	Applied Work Value	Submission Fee
1092638	FC 22	2022/JAN/28	2022/JUL/17	2022/SEP/30	75	8805.59	\$ 9046.84	\$ 0.00

Financial Summary:

Total applied work value:\$ 9046.84

PAC name: Barker Minerals Ltd.
Debited PAC amount: \$ 0.0
Credited PAC amount: \$ 1,953.16

Total Submission Fees: \$ 0.0

Total Paid: \$ 0.0

Please print this page for your records.

The event was successfully saved.

Click [here](#) to return to the Main Menu.

**GEOLOGICAL and GEOCHEMICAL
ASSESSMENT REPORT**
on the
FRANK CREEK PROPERTY

Cariboo Mining Division, British Columbia

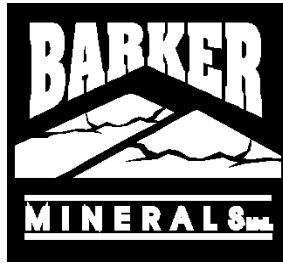
The geographic coordinates of the approximate centre of the property are:

52.73° North Latitude and 121.46° West Longitude or
604200 E and 5843900 N UTM coordinates (NAD 83)

The relevant map is:

N.T.S. Map No's. 93A/11 & 93A/14

Work was done in tenure no. 1092638



for
Barker Minerals Ltd.
330 Valley Rd.
150 Mile House, B.C.
V0K 2G0

Prepared by:
Louis Doyle

November 23, 2022

TABLE OF CONTENTS

	Page
1.0 SUMMARY	i
2.0 INTRODUCTION	1
3.0 PROPERTY DESCRIPTION and LOCATION	1
4.0 MINERAL CLAIMS	2
5.0 PHYSIOGRAPHY and ACCESSIBILITY	4
6.0 HISTORY	6
7.0 GEOLOGY	6
7.1 Regional Geology	6
Quesnel Terrane	8
Slide Mountain Terrane	9
Barkerville Terrane	9
Cariboo Terrane	10
Glaciation and Glacial Deposits	10
7.2 Geology at Cariboo Lake	11
8.0 EXPLORATION PROGRAM - 2022	12
8.1 Sampling Method and Approach	12
8.2 Economic Targets and Work Done	13
8.3 Work done in 2020 and 2022	13
9.0 CONCLUSIONS and RECOMMENDATIONS	14

LIST of FIGURES

	Page
Figure No. 1 - Cariboo Lake Property location in British Columbia	3
Figure No. 2 - Barker Minerals Ltd. Mineral Claims	3
Figure No. 3 - Access Roads from Likely to several of Barker Minerals' properties	5
Figure No. 4 - Terrane Map of Southern British Columbia	6
Figure No. 5 - Terrane Map of Cariboo Lake – Wells Area	7
Figure No. 6 - Schematic Regional Structural Section	8
Figure No. 7 - Geology and Stratigraphy of the Snowshoe Group	12
Figure No. 8 - Keymap for Cariboo Lake Project- Frank Creek Area	15
Figure No. 9 - Sample Location Map	16

LIST of TABLES

	Page
Table No. 1 Mineral Claims Details	2
Table No. 2 Best results for Au and Ag	13

LIST of APPENDIXES

Appendix A	Glossary of Technical Terms and Abbreviations
Appendix B	Analytical Methods
Appendix C	References
Appendix D	Statements of Qualifications
Appendix E	Statement of Expenditures
Appendix F	Rock Samples Locations and Descriptions
Appendix G	Frank Creek Areas Geochemical Maps & XRF Sample Results

1.0 SUMMARY

Field work performed in early 2022 on Barker Minerals Ltd's. Frank Creek Property consisted of till and stream sediment heavy mineral sampling program a drainage valley separating new logging roads and in newly logged areas with follow up XRF analysis.

Fifteen sediment/clay samples were collected on the length of the drainage which were then fine sieved in the field through a series of screen mesh sizes with a five gallon bucket of material brought out for each sample. The samples were then hand panned with the remaining heavy minerals sample analyzed by XRF at Barker's field office in Quesnel BC.

This report describes the work done in early 2022 and is a part of a larger program of the 2022 till sampling on the Frank Creek Property which will be reported in a future assessment report. Samples were taken in the bed of the stream down to the clay layer. A second and third sample of deep till were taken on the north and south upslope side of the drainage from the samples taken in the main streambed.

Due to extensive glaciations, and little outcrop exposure, till and sediment samples sieved and panned down to heavy mineral concentrates provides a better initial geochemical expression of new areas be explored.

None of the heavy mineral samples showed any gold particles and there was no gold detected in the XRF analysis.

The samples with Copper and Zinc PPM values are listed below.

Sample #	Au	Cu	Zn
F22-1	< LOD	508.26	348.91
F22-1a	< LOD	398.62	803.78
F22-1b	< LOD	884.31	1612.98
F22-2	< LOD	714.56	1148.83
F22-2a	< LOD	336.64	1203.58
F22-2b	< LOD	597.66	266.35
F22-3	< LOD	1098.87	1449.67
F22-3a	< LOD	486.97	919.79
F22-3b	< LOD	358.02	428.51
F22-4	< LOD	1343.62	1313.08
F22-4a	< LOD	2167.4	66.88
F22-4b	< LOD	1152.29	573.64
F22-5	< LOD	1001.32	975.36
F22-5a	< LOD	620.6	473.36
F22-5b	< LOD	2048.47	106.93

The geochemical results are favorable for this area to host a VMS environment with copper, zinc, lead and VMS pathfinder minerals in higher concentrations. (i)

2.0 INTRODUCTION

This report describes 1st phase 2022 field work performed on Barker Minerals Ltd's Frank Creek Property which is approximately one hour drive from the Community of Likely, BC. The work was concentrated in the Frank Creek Area on tenure no. 1092638. Fifteen heavy mineral stream sediment/clay samples were collected in the field near new logging access roads to start the 2022 field program. The remainder of the 2022 field work will be covered in a subsequent report.

On the Frank Creek Property a drainage adjoining 2 separate new logging areas was sampled with one sample taken in the bed of the stream down to the clay layer. A second and third sample of deep till were taken on the north and south upslope side of the drainage from the samples taken in the main streambed. Due to extensive glaciation, and little outcrop exposure, till and sediment samples sieved and panned down to heavy mineral concentrates provides a better initial geochemical expression of new areas be explored.

All samples were sieved in the field through a series of mesh screen sizes with a five gallon bucket of material taken from each sample location to be hand panned and then analyzed by X-ray fluorescence (XRF) for twenty-eight elements. The purpose was to search for indications of gold and VMS mineralization and to add geochemical information to the existing database for the claim group to identify potential mineralized lithologic horizons in an on-going mineral exploration program.

3.0 PROPERTY DESCRIPTION and LOCATION

The Cariboo Lake Property consists of contiguous claims listed in Table No. 1 Mineral Claims Details. The Cariboo Lake Property's location in British Columbia is indicated in Figure No. 1 – Cariboo Lake Property Location in British Columbia, and the mineral claims are outlined in Figure No. 2 – Barker Minerals Ltd. Mineral Claims. The mineral claims comprising the property are located generally in the area between Quesnel and Cariboo Lakes in the Cariboo Mining Division in British Columbia and are 100% owned by Barker Minerals Ltd. of 150 Mile House, B.C. The Property is approximately 15 km northeast of the community of Likely and 90 km northeast the City of Williams Lake.

The geographic coordinates of the approximate centre of the property are:
52.73° North Latitude and -121.46° West Longitude or
604200 E and 5843900 N UTM coordinates (NAD 83).

The relevant maps are:

N.T.S. Map No. 93A/11 and 93A/14.

4.0 MINERAL CLAIMS

Table No. 1 – Mineral Claim Details, Barker Minerals Ltd. Cariboo Lake - Frank Creek Property

<u>Tenure Number</u>	<u>Owner No.</u>	<u>Owner</u>	<u>Status</u>	<u>Area (ha)</u>
1092638	140410	Barker Minerals Ltd. 100%	Good	8786.00
1086281	140410	Barker Minerals Ltd. 100%	Good	19.5905

Total Area is 8805.5905 ha

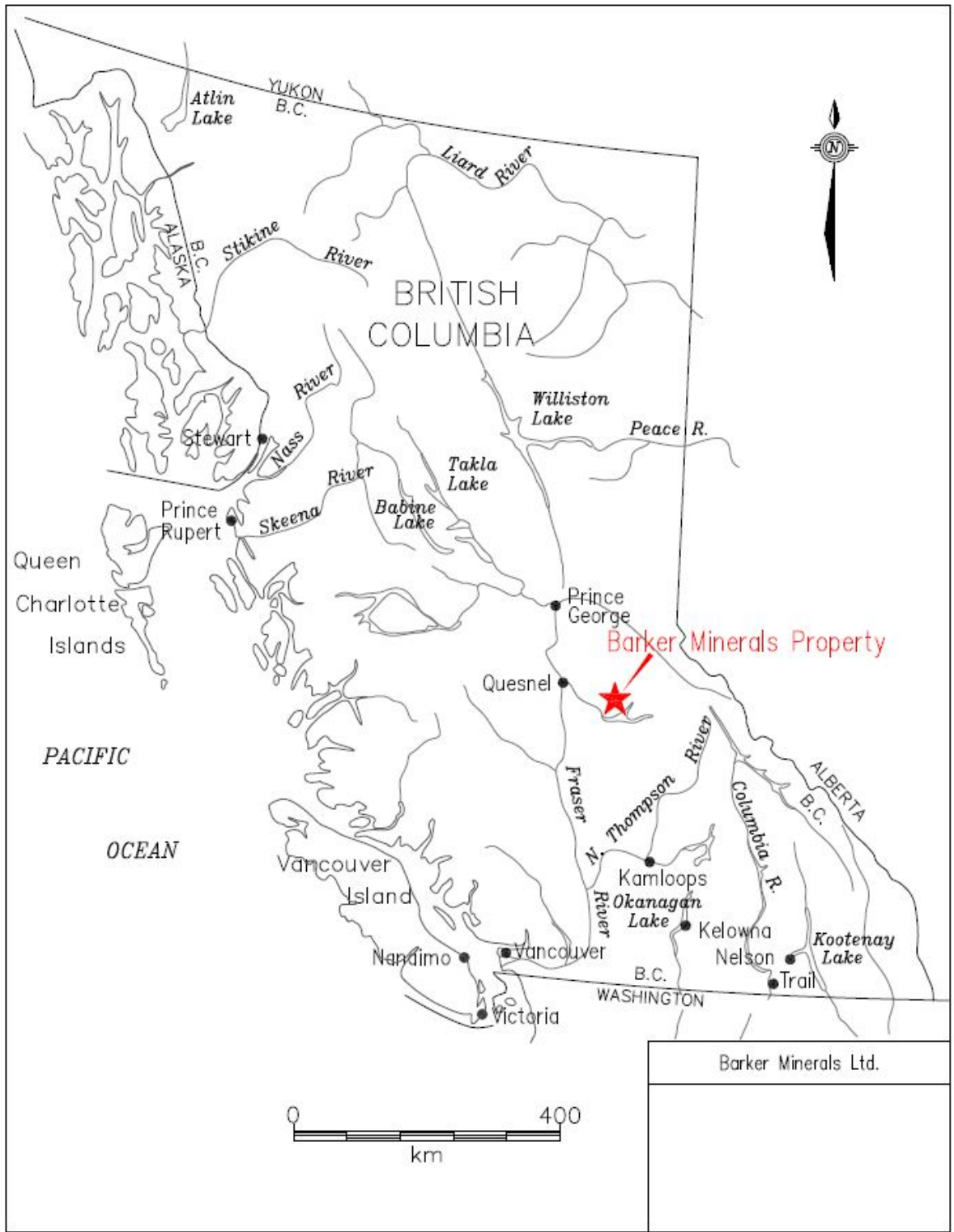
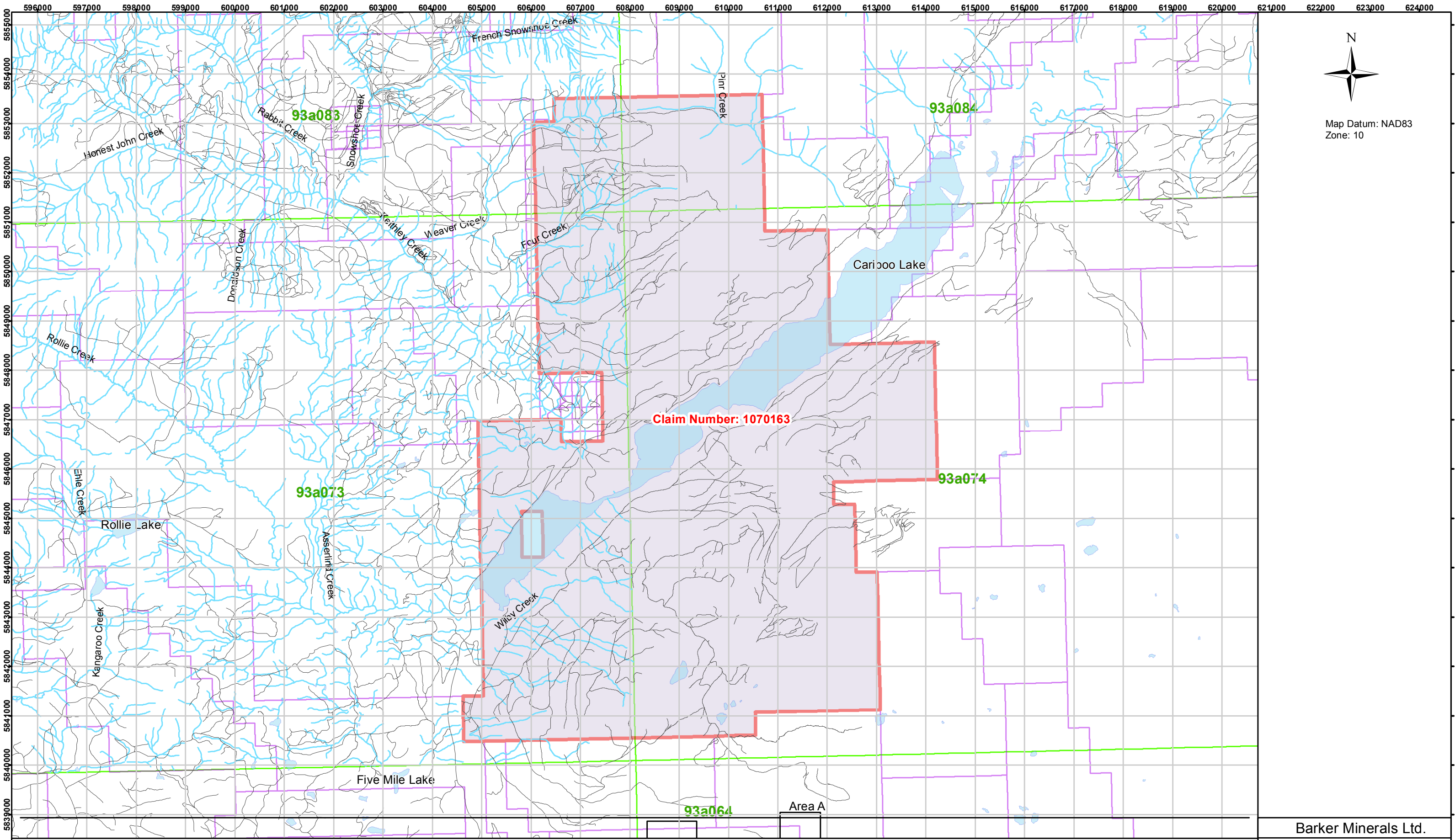


Figure No. 1 Provincial Location Map.



Map Datum: NAD83
Zone: 10

Figure 2 - Claim Location

Legend

Mineral Claims	Lakes/Rivers
FRANK CREEK	Stream
BC Mapsheets	Roads

Drawn by: B.Bye, Nortech Forestry Ltd. Quesnel, BC

Scale: 1:70,000

0 1 2 4 Kilometers

Barker Minerals Ltd.

**Frank Creek Property
Claim Location**

Claim Number: 1070163

Cariboo Mining Division, B.C.
Date: June 22, 2022 Mapsheet: 93A073/074

596000 597000 598000 599000 600000 601000 602000 603000 604000 605000 606000 607000 608000 609000 610000 611000 612000 613000 614000 615000 616000 617000 618000 619000 620000 621000 622000 623000 624000

Figure No. 2, illustrates the configuration of Barker Minerals' Cariboo Lake Property claims containing the Cariboo Lake Property work areas.

5.0 PHYSIOGRAPHY and ACCESSIBILITY

The following description in *italics*, is after McKinley, 2004:

The property is situated in the central part of the Quesnel Highland between the eastern edge of the Interior Plateau and the western foothills of the Columbia Mountains. This area contains rounded mountains that are transitional between the rolling plateaus to the west and the rugged Cariboo Mountains to the east. Pleistocene and Recent ice sheets flowed away from the high mountains to the east over these plateaus and down to the southwest Cariboo River), west (Little River) and northeast (Quesnel Lake), carving U-shaped valleys. The elevation ranges from 700-1650 m.

Precipitation in the region is heavy, as rain in the summer and snow in the winter. Drainage is to the west via the Cariboo, Little and Quesnel Rivers to the Fraser River. Quesnel Lake, the main scenic and topographic feature in the region, is a deep, long, forked, glacier-carved lake with an outlet at 725 m elevation. Vegetation is old-growth spruce, fir, pine, hemlock and cedar forest in all but the alpine regions of the higher mountains (mainly above 1400 m elevation). Weldwood has been actively logging fir, spruce and pine in the area.

Access to the property is via gravel logging roads bearing northeast from Likely. Figure No. 3 shows access roads from Likely to Cariboo Lake and several of Barker's mineral properties, including Frank Creek which is approximately 1 hour drive from Likely.

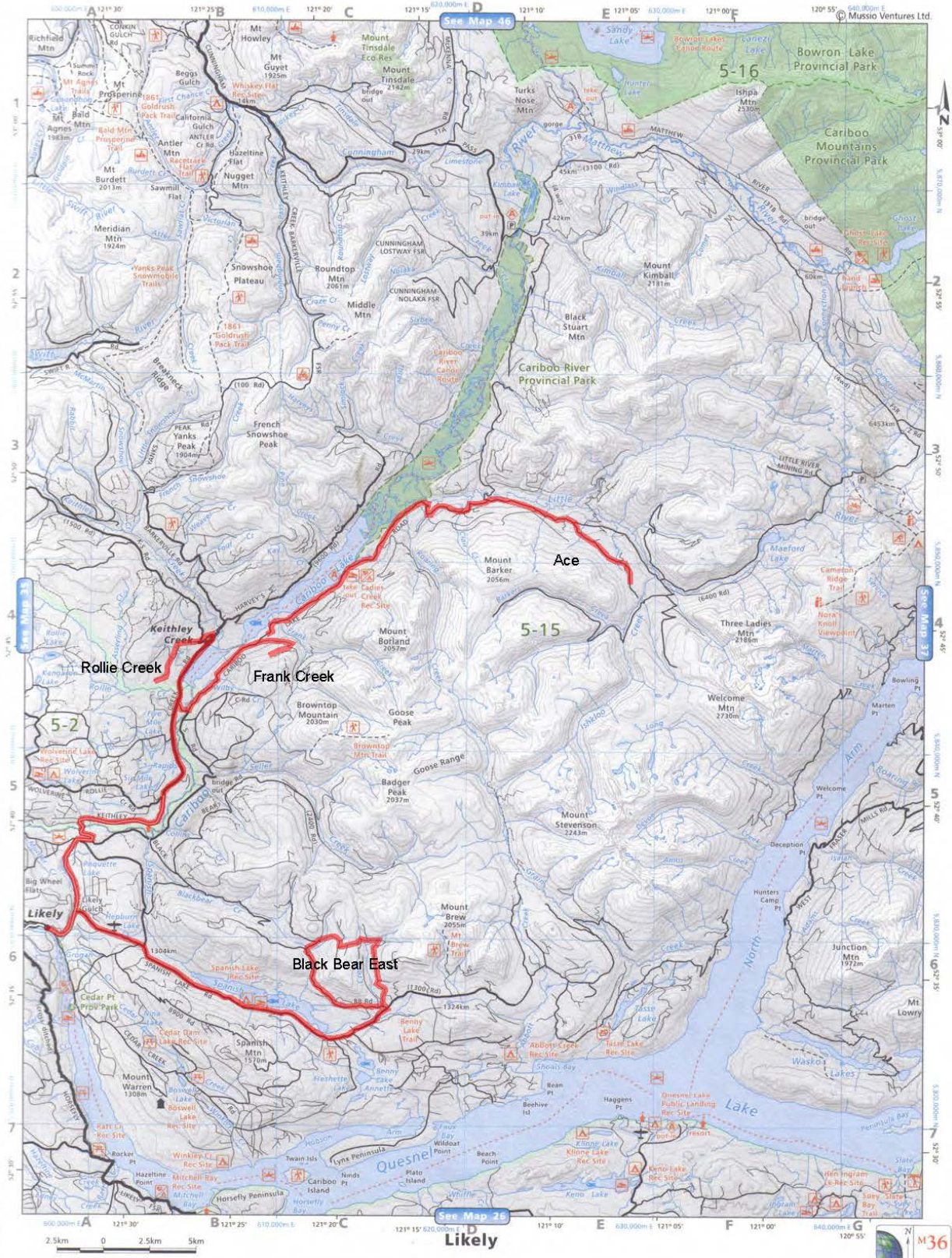


Figure No. 3 Access roads from Likely to several of Barker Minerals' properties.

6.0 HISTORY

The Frank Creek Project has historically had extensive work on it, including drilling, trenching, soil sampling and geophysical and geological mapping surveys; it would be appropriate to consult the References for an adequate description. Historically, since 1995 Frank Creek has been primarily a volcanogenic massive sulphide (VMS) prospect but gold vein mineralization is also present.

7.0 GEOLOGY

7.1 Regional Geology

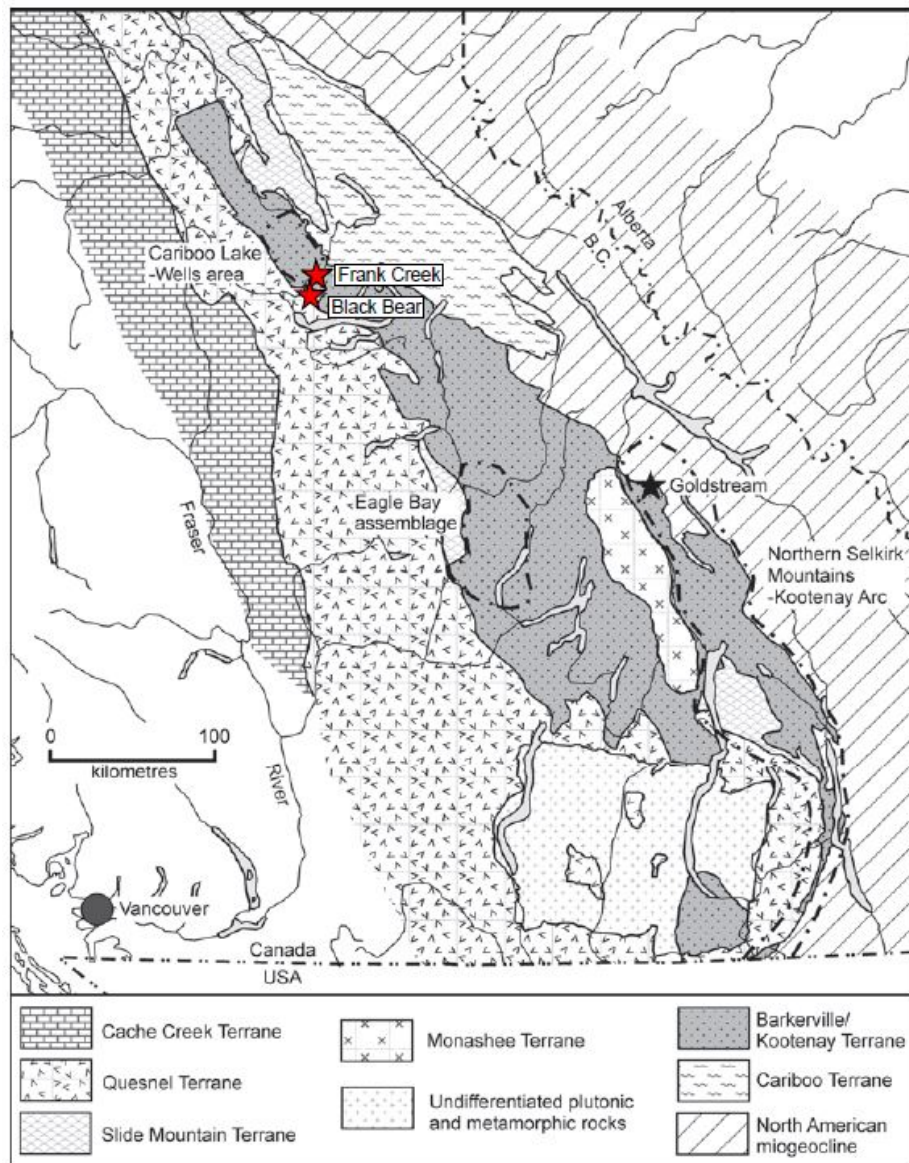


Figure No. 4 Terrane Map of Southern British Columbia.

Several Barker Minerals' properties are indicated by red stars.

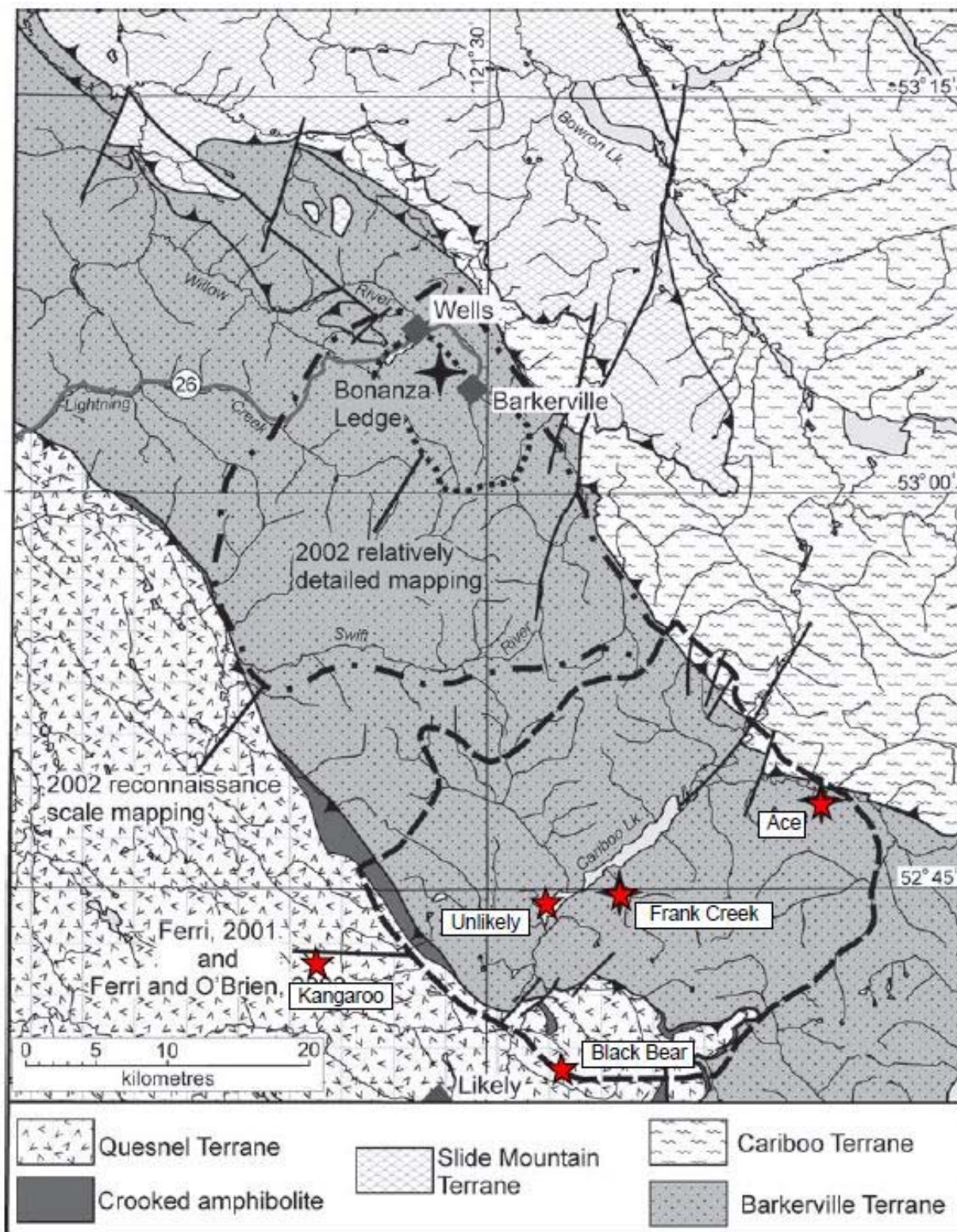


Figure No. 5 Terrane Map of Cariboo Lake – Wells Area.
 Areas mapped by the BCGS in 2000 – 2002 are shown.
 Several of Barker Minerals' properties are indicated by red stars.

The geological descriptions below derive mainly from Struik (1988), Panteleyev et al. (1996) and Payne and Perry (2001).

During the mid-Jurassic the North American continental plate collided with a group of island arcs to the west. Regional deformation and metamorphism are related to these events.

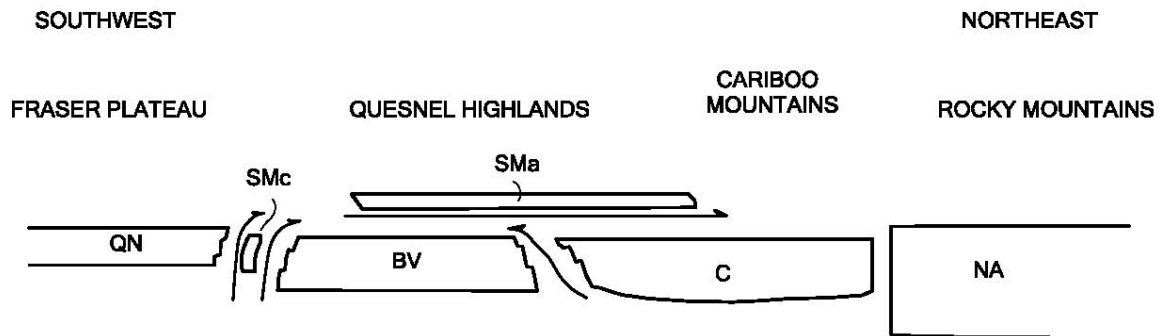


Figure No. 6 Schematic regional structural section from southwest to northeast across the four Terranes in Barker Minerals' claims area, showing the relative structural position of the Terranes. The Terrane symbols are BV-Barkerville, C-Cariboo, Sma-Slide Mountain (Antler Formation), SMc-Slide Mountain (Crooked amphibolite), QN-Quesnel and NA-North American. (after Struik, 1988).

Quesnel Terrane

The Late Triassic to Early Jurassic Quesnel Terrane...was accreted to the North American continent, in part by subduction and in part by obduction. The Eureka Thrust fault marks the boundary between the Quesnel and Barkerville terranes. The terrane is partly submarine and partly subaerial, consisting of volcanic and volcanoclastic rocks and co-magmatic intrusions, with minor carbonate lenses and related sedimentary rocks.

The principal assemblage in the Quesnel Terrane is the Triassic-Jurassic Nicola Group island arc – marginal basin sequence. The underlying rocks are the Crooked Amphibolite, part of the Slide Mountain assemblage, a mylonitized mafic and ultramafic unit of oceanic marginal basin volcanic and sedimentary rocks. Rocks of Quesnel Terrane and Crooked Amphibolite are structurally coupled and tectonically emplaced by the Eureka Thrust onto the Barkerville Terrane, to the east.

Two lithostratigraphic subdivisions of the Quesnel Terrane consists of: a basal Middle to Late Triassic metasedimentary unit of dominantly black phyllitic rocks, approximately 7 km thick, and an overlying Late Triassic to Early Jurassic volcanic arc assemblage, approximately 9 km thick. The overlying volcanic rocks outline a northwesterly trending belt of subaqueous and subaerial volcanic rocks, deposited along a series of volcanic-intrusive centres that define the Quesnel island arc of predominantly alkalic basalts.

Within...the northern extension of the Quesnel Trough, the term...Takla Group has been applied to rocks identical to the Quesnel belt rocks...Equivalent rocks to the south...are generally referred to as Nicola Group...Baily (1978) pointed out the similarity of the Quesnel volcanic units with both the Nicola Group rocks to the south and the Takla Group rocks to the north...The term Takla leads to ambiguity because in northern British Columbia it has been used for rocks in both Quesnel and Stikine terranes...The usage for the Triassic-Jurassic volcanic arc and related rocks in Quesnellia currently preferred is Nicola Group. The term Takla Group possibly should be discarded... (Panteleyev et al., (1996).

The Quesnel Trough is a well-mineralized region typical of other Late Triassic to Early Jurassic volcano-plutonic island arcs in the Cordillera. It hosts a wide variety of mineral deposits. The principal recent exploration and economic development targets in the central Quesnel belt are alkalic intrusion-related porphyry copper-gold deposits and gold-bearing propylitic alteration zones formed in volcanic rocks peripheral to some of the intrusions. Other important targets are auriferous quartz veins in the black phyllite metasedimentary succession. The veins in some black phyllite members have potential to be mined as large tonnage, low-grade deposits. Tertiary rocks are mineralized with copper and gold. Antimony-arsenic and mercury mineralization in some apparently low temperature quartz-calcite veins indicated the potential for epithermal deposits. Placer mining for gold, said to occur together with platinum, has been of major historical and economic importance.

Slide Mountain Terrane

Rocks of the Devonian to Late Triassic Slide Mountain Terrane were partly obducted, partly subducted during collision of an oceanic plate with the continent. Small slices of mainly mafic volcanic rocks and ultramafic rocks of the Slide Mountain Terrane occur in and parallel to the Eureka thrust. Minor lithologies include chert, meta-siltstone and argillite.

The Crooked Amphibolite, considered to likely be a part of the Slide Mountain Terrane, includes three major constituent rock types: greenstone, metagabbro and meta-ultramafite. North of Quesnel Lake, the map units consist of mafic metavolcanics, amphibolite, chlorite schist, serpentinite, ultramafic rocks and pillow lavas. Chemical analyses indicate subalkaline tholeiitic compositions of basalts formed on the ocean floor. If the Crooked Amphibolite is a sheared and metamorphosed equivalent of the Antler Formation and is part of the Slide Mountain Terrane, it is separated from the underlying Barkerville Terrane by the Eureka Thrust, a wide zone of mylonitization. The Crooked amphibolite and the overlying rocks of Quesnel Terrane are structurally coupled and emplaced tectonically onto Barkerville Terrane.

Barkerville Terrane

The Barkerville Terrane is made up of the Snowshoe Group and Quesnel Lake gneiss. The Snowshoe Group rocks are Upper Proterozoic to Upper Devonian metasediments, considered correlative in age with the Eagle Bay Formation in the Kootenay Terrane to the south. The Snowshoe Group rocks are dominated by varieties of grit, quartzite, pelite, limestone and volcanoclastic rocks. The stratigraphic sequence is not well understood. The

region was deformed by intense, complex, in part isoclinal folding and overturning. Locally, strong shear deformation produced mylonitic textures. The Quesnel Lake Gneiss is a Devonian to Mississippian intrusive unit varying in composition from diorite to granite to syenite. It is generally coarse grained, leucocratic, often with megacrysts of potassium feldspar. The main body of gneiss is 30 km long by 3 km wide and is elongated parallel to the eastern border of the Intermontane belt. Its contacts are in part concordant with, and in part perpendicular to, metamorphic layering.

The contact between the Barkerville Terrane and Cariboo Terrane to the east is the Pleasant Valley Thrust. The Barkerville and Cariboo Terranes were juxtaposed prior to emplacement of the Slide Mountain Terrane which was thrust over both of them. The northeastern third of the Barkerville Terrane is the main zone of economic interest in the Cariboo district. Struik described it as “gold-enriched”, because it contains the historic Wells and Barkerville gold mines and the Cariboo Hudson deposit, approximately 40 km and 20 km northwest of the project area, respectively.

Cariboo Terrane

Northeast of Barker Minerals’ Cariboo Lake property is underlain by Precambrian to Permo-Triassic marine peri-cratonic sedimentary strata of the Cariboo terrane. The Cariboo Terrane consists mainly of limestone and dolomite with lesser siliceous, clastic, sedimentary rocks and argillite. Some geologists believe that the Cariboo Terrane is a shallow, near-shore facies and the Barkerville is a deeper, offshore facies of the same erosion-deposition system. No rifting is suspected between the Cariboo Terrane and the North American continent, in contrast to that between the Barkerville Terrane and the North American continent. Lithologies within the Cariboo Terrane correlate well with parts of the Classier Platform and Selwyn Basin of Yukon and northern British Columbia.

The Cariboo and Barkerville Terranes are separated by the regional Pleasant Valley Thrust fault, which dips moderately to steeply northeast. Struik (1988) states the Cariboo block was thrust from the east over the Barkerville block along a strike length of over 100 km. The Cariboo Terrane was cut by the Jurassic-Cretaceous Little River stock, a medium-grained granodiorite grading to quartz monzonite. Some of the carbonate layers in the lowest part of the Cariboo terrane (or upper part of the Barkerville Terrane) are enriched in zinc and lead. Since the 1970's, preliminary exploration on stratiform Zn-Pb targets has been conducted in this area.

Glaciation and glacial deposits

The last glacial stage that affected the Quesnel Highland, the Fraser glaciation, began 30,000 years ago. Much of this ice had melted by 10,000 years ago, but small remnants are preserved high in the alpine areas of the Cariboo Mountains. At lower elevations, glaciers of this age scoured the debris left by preceding ice advances, almost completely destroying them, leaving a chaotic assemblage of unsorted till, moraine and drift, with lenses of gravel and sand that had been roughly sorted by melt water and rivers, leaving behind beds of silt and clay that were stratified by settlement in ice-dammed lakes. In the Cariboo area, the debris covers bedrock in valleys below 1,700 m, leaving typical glacial features such as U-

shaped valleys, ice-sculpted drumlins, moraine terraces and glacier and river benches. On the Barker Minerals properties, glacial deposits range from one to a few tens of metres thick. Some glacial till deposits are overlain by well-bedded glaciolacustrine clay and silt deposits up to a few tens of metres thick.

In much of the Cariboo district, a layer of distinctive, hard, compact, semi-rigid blue clay sits either on or slightly above bedrock and acts as “false” bedrock. It was formed from glacial drift left behind by the last ice advance prior to the Fraser glaciation and was compacted by the weight of the Fraser stage ice. In the placer-gold areas of the Cariboo, large amounts of gold were recovered from gravel resting on this clay. In places the clay layer was penetrated by the placer miners to reach richer “pay streaks” on true bedrock below.

7.2 Geology at Cariboo Lake

Figure No. 7, next page, presents the broad-scale geology and stratigraphy of the Cariboo Lake project area. Work by Struik (1983), Ferri (2001) and Ferri and O’Brien (2002) placed the rocks of Barker’s project areas in the Snowshoe Group of the Barkerville terrane. These rocks include, from oldest to youngest, the Keithley succession, Harvey’s Ridge succession and Goose Peak quartzite.

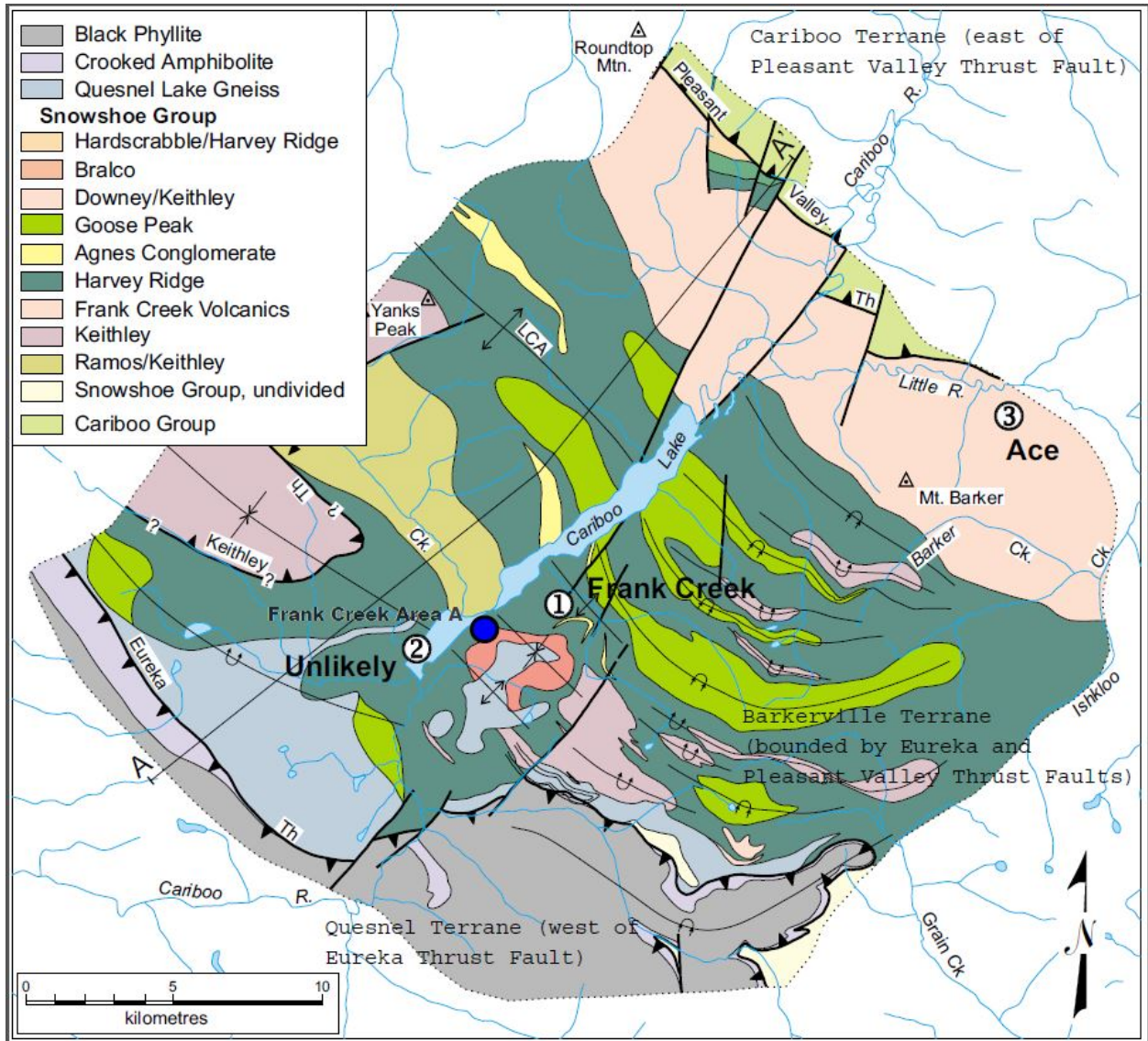


Figure No. 7 Geology and Stratigraphy of the Snowshoe Group. Barker Minerals' Ace, Unlikely and Frank Creek mineral prospects within the Cariboo Lake project are indicated on this BC Government map. The current work location at Frank Creek Area is indicated by a blue spot.

8.0 EXPLORATION PROGRAM, 2022

8.1 Sampling Method and Approach

This report describes 1st phase 2022 assessment work performed on Barker Minerals Ltd's Frank Creek Property which is approximately one hour drive from the Community of Likely, BC. The work was concentrated in the Frank Creek Area on tenure no. 1092638. Fifteen heavy mineral stream sediment/clay samples were collected in the field on new logging access roads to start the 2022 field program.

The samples were sieved in the field through a series of mesh screen sizes with a five gallon bucket of fine grain material taken from each sample location to be hand panned and then analyzed by X-ray fluorescence (XRF) for twenty-eight elements. The purpose was to search for indications of gold mineralization and to add geochemical information to the existing database for the claim group and to identify potential mineralized lithologic horizons in an on-going mineral exploration program.

The fifteen samples collected were analyzed for multiple elements using the Niton XL3t handheld X-ray fluorescence analyzer from Thermo Scientific Inc. Further information on this instrument is at the Niton website <http://www.niton.com/en/niton-analyzers-products/xl3/xl3t>. An overview of sample analysis using energy dispersive X-ray fluorescence (EDXRF), adapted from the Niton website, is in Appendix B.

Hand panning and XRF analyses were completed at Barker's field office in Quesnel BC. Coordinates were collected at all sample locations. The coordinates and are provided in Table No. 3. The rocks were analyzed to determine background values and to identify geochemical patterns. Barren granite was used for calibration of the XRF analyzer.

The XRF analysis method does not replace laboratory assay. It detects the presence or absence of multiple elements in prospecting and, up to a certain point, the intensity of mineralization and correlation among elements in a specimen. The XRF is very useful in analysis for base economic and pathfinder metals though Au needs to be in relatively high grade in order to be detected by the XRF.

8.2 Economic Targets

The economic targets over all of the Cariboo Lake Property, Frank Creek area, are volcanogenic massive sulphide and gold in quartz veins.

8.3 Work done in 2022 (Till and Stream sampling)

This report describes 1st phase 2022 field work performed on Barker Minerals Ltd's Frank Creek. The work was concentrated in the Frank Creek Area on tenure no. 1092638. Fifteen heavy mineral stream sediment/clay samples were collected in the field near new logging access roads to start the 2022 field program. The remainder of the 2022 field work will be covered in a subsequent report.

A drainage adjoining 2 separate new logging areas was sampled with one sample taken in the bed of the stream down to the clay layer. A second and third sample of deep till were taken on the north and south upslope side of the drainage from the samples taken in the main streambed. Due to extensive glaciation, and little outcrop exposure, till and sediment samples sieved and panned down to heavy mineral concentrates provides a better initial geochemical expression of new areas be explored.

All samples were sieved in the field through a series of mesh screen sizes with a five gallon bucket of material taken from each sample location to be hand panned and then analyzed by X-ray fluorescence (XRF) for twenty-eight elements. The purpose was to search for indications of gold and VMS mineralization and to add geochemical information to the existing database for the claim group to identify potential mineralized lithologic horizons in an on-going mineral exploration program.

None of the heavy mineral samples showed any gold particles and there was no gold detected in the XRF analysis.

However the geochemical results are favorable and consistent for this area to host a VMS environment with copper, zinc, lead and VMS pathfinder minerals in higher concentrations.

The samples with Copper and Zinc PPM values are listed below.

Sample #	Au	Cu	Zn
F22-1	< LOD	508.26	348.91
F22-1a	< LOD	398.62	803.78
F22-1b	< LOD	884.31	1612.98
F22-2	< LOD	714.56	1148.83
F22-2a	< LOD	336.64	1203.58
F22-2b	< LOD	597.66	266.35
F22-3	< LOD	1098.87	1449.67
F22-3a	< LOD	486.97	919.79
F22-3b	< LOD	358.02	428.51
F22-4	< LOD	1343.62	1313.08
F22-4a	< LOD	2167.4	66.88
F22-4b	< LOD	1152.29	573.64
F22-5	< LOD	1001.32	975.36
F22-5a	< LOD	620.6	473.36
F22-5b	< LOD	2048.47	106.93

9.0 CONCLUSIONS and RECOMMENDATIONS

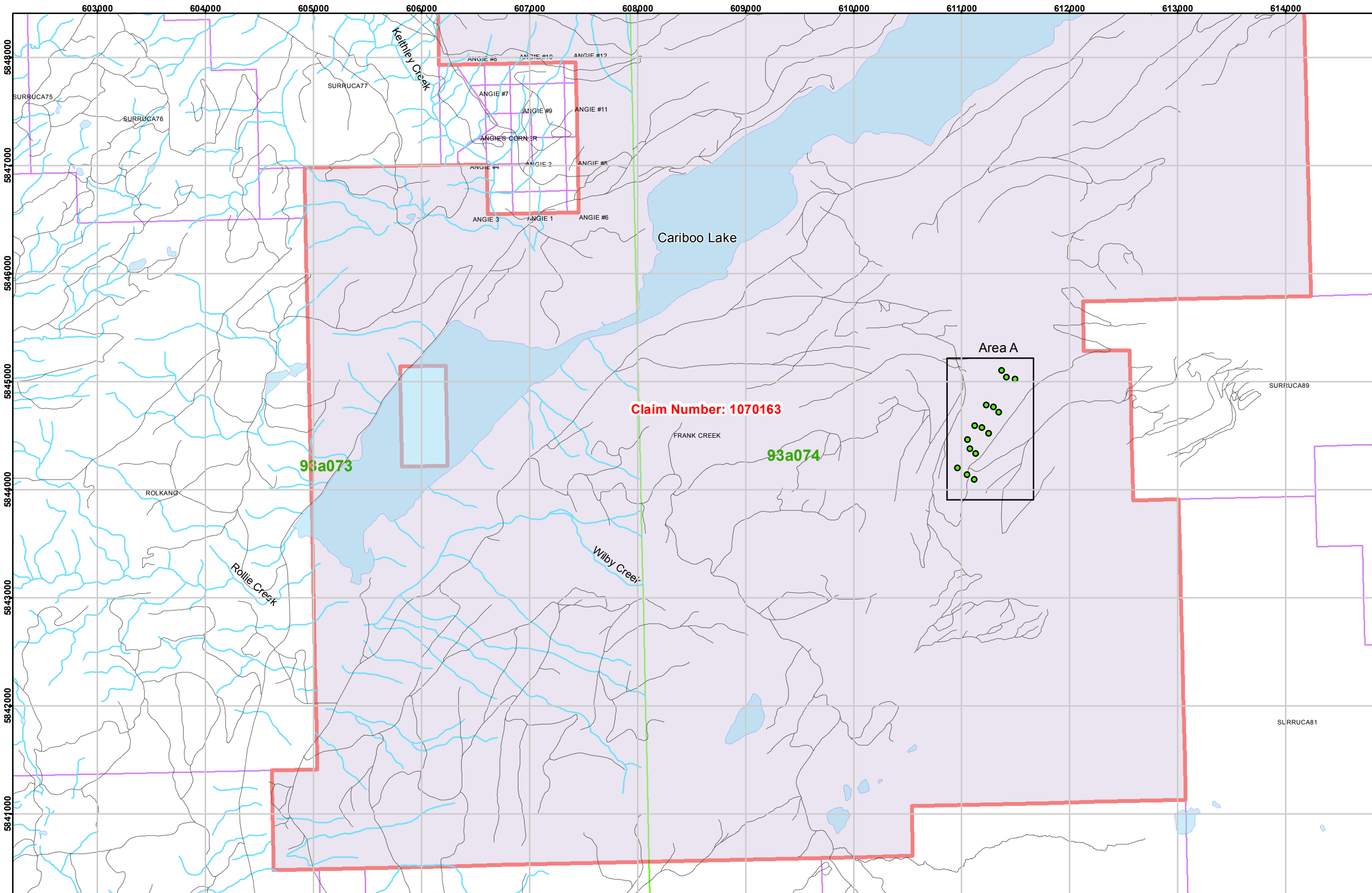
The results of the geological geochemical studies will be added to Barker's growing Frank Creek geochemical database. The till and stream samples collected and geochemical results are consistent with a gold vein system and a Volcanogenic Massive Sulphide (VMS) environment being present which enhances the potential for future discovery of massive sulphide and gold mineralization in bedrock.

Ongoing active logging is taking place on a number of areas within Frank Creek project areas with much future logging planned. The logging activity and associated access roads help provide access to areas which are otherwise inaccessible and which have yet to be

explored. The new logging access roads and logging clear cuts provide opportunities to get geochemical and geological information at an early stage through sampling of soils and rocks along the newly exposed areas.

With the deep overburden present over most of the property glacial till profile studies and surveys may also be useful to assist in vectoring in to the most prospective areas for future trenching programs.

Further sampling, including rock, till and soil, should be done in the areas of higher gold, copper and zinc anomalous zones followed up by geophysics and trenching if warranted.



Map Datum: NAD83
Zone: 10

For Area D I see Figure No. 9

Claim Number: 1070163

93a073

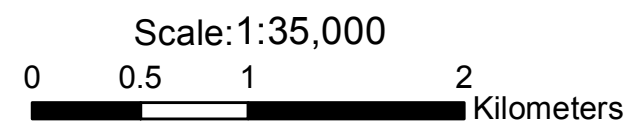
93a074

Area A

Figure No: 8

- Legend**
- Mineral Claims
 - FRANK CREEK
 - BC Mapsheets
 - Lakes/Rivers
 - Stream
 - Roads

Drawn by: B.Bye, Nortech Forestry Ltd. Quesnel, BC



Barker Minerals Ltd.

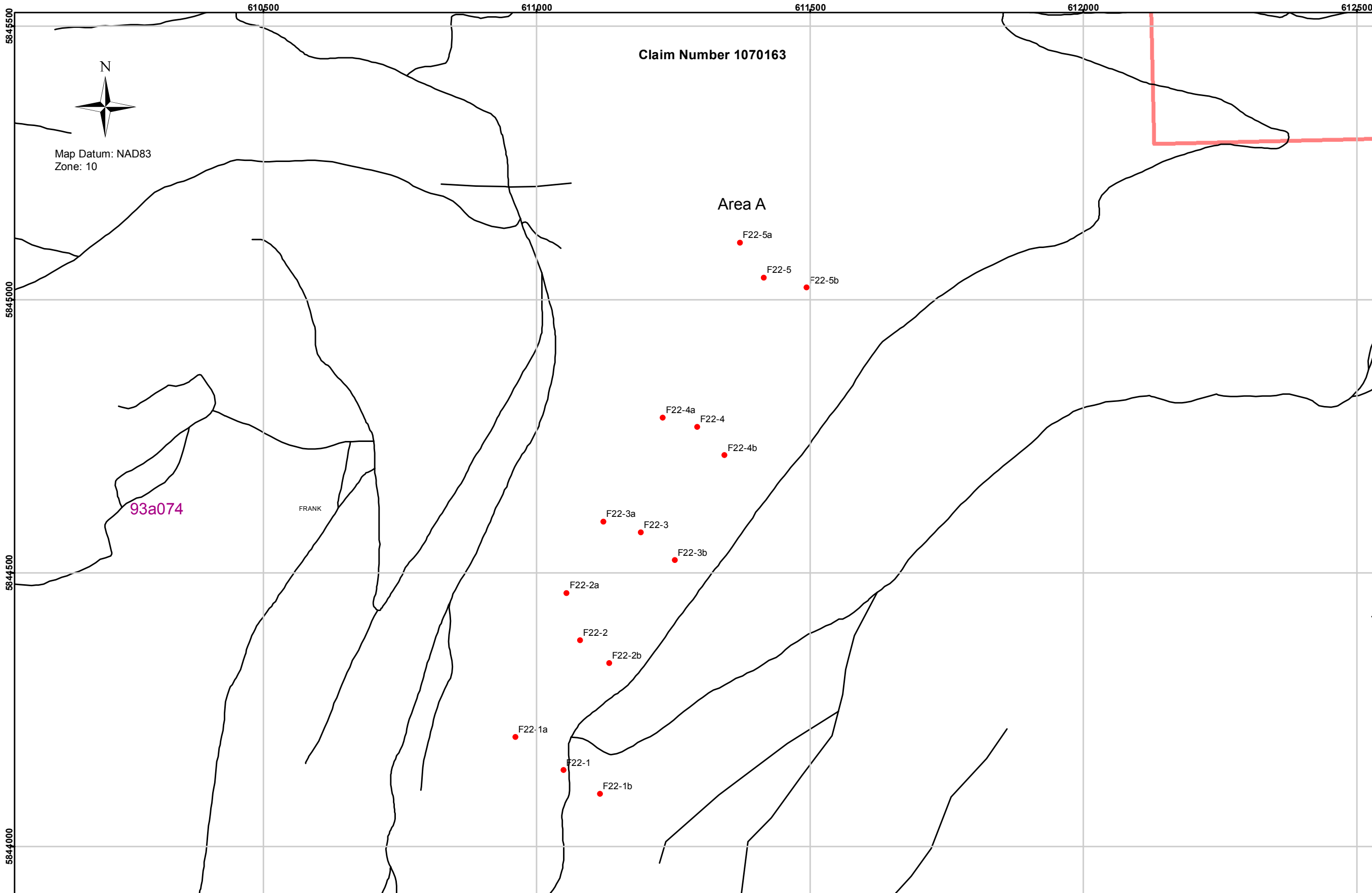
**Frank Creek Property
Keymap of Areas**

Claim Number: 1070163

Cariboo Mining Division, B.C.

Date: Dec. 12, 2022 Mapsheet: 93A073/074

603000 604000 605000 606000 607000 608000 609000 610000 611000 612000 613000 614000 615000



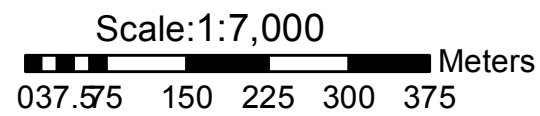
Frank Creek Property Area A
Till Samples XRF Results (ppm)

Sample #	Au	Cu	Zn
F22-1	0	508.26	348.91
F22-1a	0	398.62	803.78
F22-1b	0	884.31	1613
F22-2	0	714.56	1148.8
F22-2a	0	336.64	1203.6
F22-2b	0	597.66	266.35
F22-3	0	1098.9	1449.7
F22-3a	0	486.97	919.79
F22-3b	0	358.02	428.51
F22-4	0	1343.6	1313.1
F22-4a	0	2167.4	66.88
F22-4b	0	1152.3	573.64
F22-5	0	1001.3	975.36
F22-5a	0	620.6	473.36
F22-5b	0	2048.5	106.93

Results below level of detection are not shown.
Zn, Cu results over 100 ppm marked in red.
See table No. ____ for XRF results.

- Legend**
- Till Sample Locations
 - Frank Creek Claim
 - BC Mapsheets
 - Lakes/Rivers
 - Stream
 - Roads

Figure No: 9



Drawn by: B.Bye, Nortech Forestry Ltd. Quesnel, BC

Barker Minerals Ltd.
Frank Creek Property
Area A
Till Sample Locations, numbers
and Cu, Zn Geochemistry
Cariboo Mining Division, B.C.
Date: December 12, 2022 Mapsheet: 93A074
Claim Number: 1070163

APPENDIX A

Glossary of Technical Terms and Abbreviations

Ag	Silver.
Anomalous	Chemical and mineralogical changes and higher than typical background values in elements in a rock resulting from reaction with hydrothermal fluids or increase in pressure or temperature.
Anomaly	The geographical area corresponding to anomalous geochemical or geophysical values.
As	Arsenic.
Au	Gold.
Background	The typical concentration of an element or geophysical response in an area, generally referring to values below some threshold level, above which values are designated as anomalous.
BCGS	British Columbia Geological Survey.
B.C. MEMPR	British Columbia Ministry of energy Mines and Petroleum Resources.
Bi	Bismuth.
Cd	Cadmium.
cm	Centimetre.
Co	Cobalt.
Cu	Copper.
Cratonic	Pertaining to a craton, an old part of the continental crust, generally making up the interior portion of a continent such as North America.
DCIP	An electrical method which uses the injection of current and the measurement of voltage and its rate of decay to determine the subsurface resistivity and chargeability.
DDH	Diamond drill hole.
eg.	<i>exempli grātiā</i> (for the sake of example).
EM	Electromagnetic.
E-W	East-West.
F	Fluorine.
Float	Loose rocks or boulders; the location of the bedrock source is not known.

GBC	Geoscience British Columbia.
Grab sample	A sample of a single rock or selected rock chips collected from within a restricted area of interest.
GSC	Geological Survey of Canada.
g/t	Grams per tonne (metric tonne). 34.29 g/t (metric tonnes) = 1.00 oz/T (short tons).
Ha	Hectare - an area totalling 10,000 square metres, e.g., an area 100 metres by 100 metres.
Heavy mineral concentrate	A 10 kg sample is sieved and submitted to heavy liquid separation. The resultant heaviest concentrate is then separated into magnetic and non-magnetic portions. These are then examined under microscope or assayed.
Hg	Mercury.
HLEM	Horizontal loop electromagnetic.
Intrusive	A magmatic rock that cuts into and alters older rocks and may be the source of minerals deposited into the rocks intruded, creating skarn or porphyry type mineral deposits.
IP	Induced polarization geophysical survey.
kg	Kilogram.
km	Kilometre.
lb.	Pound.
Leucocratic	Light-coloured.
<LOD	Below the level of detection.
m	Metre.
Max-Min	An HLEM technique to test for resistivity and conductivity of rocks.
µm	Micron, micro-metre, one millionth of a metre.
Mn	Manganese.
Mo	Molybdenum.
MT	Magnetotelluric. A electrical method that uses natural variations in the Earth's magnetic field to induce electric current in the ground to determine the subsurface resistivity.

my	Million years.
NE-SW	Northeast-Southwest.
NNW-SSE	North northwest – South southeast.
NW	Northwest.
NW-SE	Northwest - Southeast.
N-S	North-South.
OF	Open File.
Orogenic	The physical manifestations of the process of mountain building. Orogens are usually long, thin, arcuate tracts of rock that are geologically active and have a pronounced linear structure resulting in terranes.
oz.	Ounce.
oz/st	ounces per short ton (Imperial measurement, same as oz/T). 34.29 g/t (metric tonnes) = 1.00 oz/st (short tons).
oz/T	ounces per ton (Imperial measurement). 34.29 g/t (metric tonnes) = 1.00 oz/T (short tons).
Pathfinder	A metallic element associated with an ore element such as silver or gold. Areas of anomalous “pathfinder” elements can suggest the possible presence of ore elements though the latter may not be detected initially.
Pb	Lead.
Porphyry	A deposit where primarily Cu-bearing minerals occur in disseminated grains or veinlets through a large volume of rock within or in close association with intrusive igneous rocks. Au and Mo are also important products of porphyry deposits.
Potassic alteration	Typical of porphyry copper and lode gold deposits, results in production of micaceous, potassic minerals such as biotite in iron-rich rocks, muscovite mica or sericite in felsic rocks, and orthoclase (adularia) alteration, often quite pervasive and producing distinct salmon-pink alteration zones.
ppb	Parts per billion.
ppm	Parts per million (1 ppm = 1,000 ppb = 1 g/t).
Propylitic alteration	Alteration of rocks due to hot fluids that have a high sodium ion composition. It typically results in epidote–chlorite–albite alteration with pyrite.
Protolith	The original rock before it was metamorphosed.

QUEST	Quesnellia Exploration Strategy, a BCGS geophysical survey.
Sedex	Sedimentary-exhalative mineral deposit type.
SE	Southeast.
Skarn	Forms by chemical metasomatism of rocks in the contact zone of intrusive rocks with rocks often containing carbonate minerals. Skarns in the igneous environment are associated with hornfels and wider zones of calc-silicate rocks. Skarns are often hosts for copper, lead, zinc, iron, gold, molybdenum, tin, and tungsten ore deposits.
Sb	Antimony.
Talus	A collection of rock fragments at the base of crags or mountain cliffs, that has accumulated through rockfall from adjacent cliff faces. Also called scree.
Te	Tellurium.
TEM or TDEM	Time Domain EM.
Tensor-magnetotelluric	See MT.
Terrain	An arbitrarily defined geographic location.
Terrane	A major crustal block with a particular geologic history.
Tholeiitic	A type of basalt. The most common volcanic rocks on Earth, produced by submarine volcanism at mid-ocean ridges and make up much of the ocean crust. Chemically, these basalts have been described as subalkaline, that is, they contain less (Na_2O plus K_2O) at similar SiO_2 than alkali basalt.
TRIM	Terrain Resource Information Management, series of 1:20,000 scale maps.
VLF	Very low frequency.
VLF-EM	Very low frequency electromagnetic.
VMS	Volcanic-related massive sulphide.
VHMS	Volcanic-hosted massive sulphide. Same as VMS.
XRF	X-ray florescence.
Zn	Zinc.

APPENDIX B

Analytical Methods

Overview of sample analysis using energy dispersive X-ray fluorescence using the Thermo Scientific Niton XL3t handheld XRF analyzer

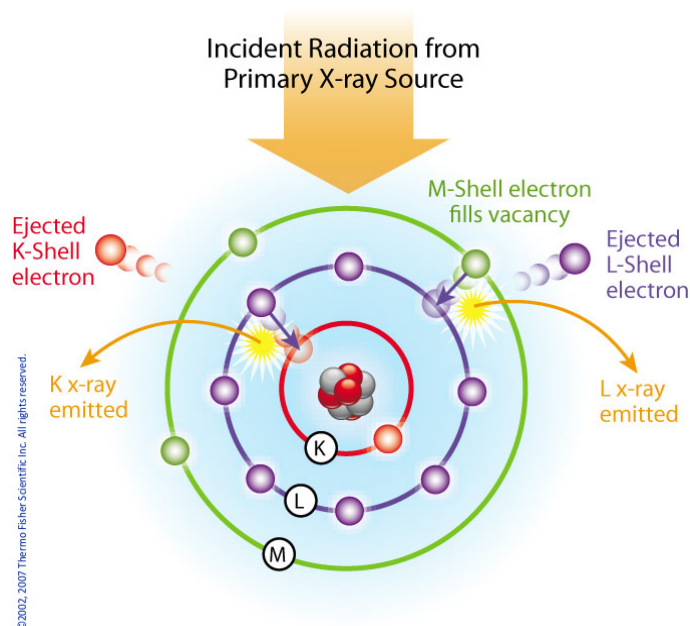
Thermo Scientific portable energy-dispersive x-ray fluorescence (EDXRF) analyzers, commonly known as XRF analyzers, can quickly and nondestructively determine the elemental composition of metal and precious metal samples of rocks, ore and soil.

Up to 40 elements may be analyzed simultaneously by measuring the characteristic fluorescence x-rays emitted by a sample. XRF analyzers can quantify elements ranging from magnesium (Mg - element 12) through uranium (U - element 92) and measure x-ray energies from 1.25 keV up to 85 keV in the case of Pb K-shell fluorescent x-rays excited with a ^{109}Cd isotope. These instruments also measure the elastic (Rayleigh) and inelastic (Compton) scatter x-rays emitted by the sample during each measurement to determine, among other things, the approximate density and percentage of the light elements in the sample.

Elemental Analysis - A Unique Set of Fingerprints

How does XRF work? Each of the elements present in a sample produces a unique set of characteristic x-rays that is a "fingerprint" for that specific element. XRF analyzers determine the chemistry of a sample by measuring the spectrum of the characteristic x-ray emitted by the different elements in the sample when it is illuminated by x-rays. These x-rays are emitted either from a miniaturized x-ray tube, or from a small, sealed capsule of radioactive material.

1. A fluorescent x-ray is created when an x-ray of sufficient energy strikes an atom in the sample, dislodging an electron from one of the atom's inner orbital shells.
2. The atom regains stability, filling the vacancy left in the inner orbital shell with an electron from one of the atom's higher energy orbital shells.
3. The electron drops to the lower energy state by releasing a fluorescent x-ray, and the energy of this x-ray is equal to the specific difference in energy between two quantum states of the electron.



Atom emits characteristic X-rays when illuminated by x-rays from a primary source.

When a sample is measured using XRF, each element present in the sample emits its own unique fluorescent x-ray energy spectrum. By simultaneously measuring the fluorescent x-rays emitted by the different elements in the sample, the Thermo Scientific portable XRF analyzers can rapidly determine those elements present in the sample and their relative concentrations - in other words, the elemental chemistry of the sample.



Overview of the Thermo Scientific Niton XL3t handheld XRF analyzer.

APPENDIX C

REFERENCES

Reports listed below which are Assessment Reports are available for free download from the BC Geological Survey (BCGS) Assessment Report Indexing System (ARIS) at the Ministry of Energy, Mines and Petroleum Resources' website. www.empr.gov.bc.ca/Mining/Geoscience/ARIS

Ballantyne, S.B., Hornbrook, E.W.H., Johnson, W.M., National Geochemical Reconnaissance, Quesnel Lake, British Columbia, NTS 093A, GSC Open File 776, 1981. (Alternately, BC MEMPR Open File BC RGS-5).

Barker Minerals Ltd., Preliminary Prospectus, July 17, 2001. Report filed with System for Electronic Document Analysis and Retrieval (SEDAR) under authority of Canadian Securities Administrators (CSA).

Barker Minerals Ltd., Annual Information Form, October 28, 2002. Report filed with System for Electronic Document Analysis and Retrieval (SEDAR) under authority of Canadian Securities Administrators (CSA).

Barrett, T.J. and MacLean, W.H., Lithological and Lithochemical Features of Rocks on the Frank Creek and Ace Properties, December 31, 2003. (as Appendix V in Assessment Report 27655 by Doyle, L.E. and as Appendix III in Assessment Report 28248 by Doyle, L.E.).

Bowman, A., Report on the Geology of the Mining District of Cariboo, British Columbia, in Geological and Natural History Survey of Canada Reports and Maps of Investigations and Surveys, 1887-1888; Selwyn, A R C; Geological Survey of Canada, Annual Report vol. 3, pt. 1, 1889; pages 1C-49C 5 sheets, including a Map titled Placer Mines of Harvey Creek in Cariboo District, British Columbia, GSC Map 371, (1890).

Brown, A.S., Geology of the Cariboo River Area, British Columbia, BC Department of Mines and Petroleum Resources, Bulletin No. 47, 1963.

Doyle, L.E., Prospecting, Geochemical, Geophysical, Geological, Trenching and Diamond Drilling of the Ace, Frank Creek, SCR and Peripheral Properties, Little River Area, March 20, 2003. (Assessment Report 27125 – includes as Appendix 3: Wild, C.J., June 26, 2002 and Appendix 4: Walcott, P.E., September, 2002 and Appendix 5: Perry, B.J., October 21, 2002).

Doyle, L.E., Prospecting, Geochemical, Geophysical, Geological, Trenching and Diamond Drilling of the Ace, Frank Creek, SCR Massive Sulphide Projects and Peripheral Properties, Little River Area, February 15, 2005. (Assessment Report 27655 – includes as Appendix V: Barrett, T.J. & MacLean W.H., December 31, 2003 and Appendix VI: McKinley, S.D., July 19, 2004).

Doyle, L.E., Geochemical, Geophysical, Geological, Trenching and Diamond Drilling of the Ace, Frank Creek, SCR, Kangaroo Projects and Peripheral Properties, Little River Area, August 26, 2005. (Assessment Report 28248 – includes as Appendix III: Barrett, T.J. and MacLean, W.H., December 31, 2003 and as Appendix I: McKinley, S.D., July 19, 2004).

Doyle, L.E., Diamond Drilling Geological Mapping, Trenching, Prospecting and Geophysical Work Assessment report on the Frank Creek, Black Bear and Simlock Properties, January 27, 2012. (Assessment Report 32696).

Ferri, F., and O'Brien, B.H., Preliminary Geology of the Cariboo Lake Area, Central British Columbia (093A/11, 12, 13 and 14), in Geological Fieldwork 2001, B.C. Ministry of Energy and Mines, Paper 2002-1.

Ferri, F., and O'Brien, B.H., Preliminary Geology of the Cariboo Lake Area, Central British Columbia (093A/11, 12, 13 and 14), in Geological Fieldwork 2001, B.C. Ministry of Energy and Mines, Paper 2002-1.

Ferri, F., and O'Brien, B.H., Geology of the Cariboo Lake Area, Central British Columbia (093A/11, 12, 13 and 14), B.C. Ministry of Energy and Mines, Open File 2003-1.

Ferri, F., and O'Brien, B.H., Geology and Massive Sulphide Potential of the Barkerville Terrane, Cariboo Lake Area, British Columbia, BC Geological Survey Branch, Cordillerran Roundup Poster No. 8, Information Circular 2002-3.
http://www.empr.gov.bc.ca/DL/GSBPubs/InfoCirc/IC2002-3/08-Ferri_Barkerville.pdf

Ferri, F. & Schiarizza, P., Re-interpretation of the Snowshoe Group stratigraphy across a south-west verging nappe structure and its implications for regional correlations within the Kootenay terrane in Geological Association of Canada GAC Special Paper 45, 2006.

Hóy, T. and Ferri, F., Stratabound Base Metal Deposits of the Barkerville Subterrane, Central British Columbia (093A/NW), in Geological Fieldwork 1997, B.C. Ministry of Energy and Mines, Paper 1998-1.

Geological Survey of Canada, Likely Survey, 2009. An airborne geophysical survey in 2008-2009 covering a 30 km x 150 km area oriented NW-SE between the latitudes of Quesnel and Williams Lake. A series of 1:50,000 scale magnetic and gamma-ray spectrometric maps, published as GSC Open Files 6157 to 6166.

Geological Survey of Canada, Cariboo Lake Survey, 2009. A detailed airborne geophysical survey over the central portion of the Likely survey. The flight lines were 200 m apart and oriented NE-SW as before. A series of 1:20,000 scale magnetic and electromagnetic maps published as GSC Open Files 6232 to 6252.

Hóy, T., (2003), Barker Minerals Ltd.: Ace and Frank Creek Exploration Summary, letter from T. Hóy to Barker Minerals.

Jones, T.A., BT Group – Report on Geology & Geochemistry, March 1982. (Assessment Report 10252).

Lane, B. and MacDonald K., Volcanogenic Massive Sulphide Potential in the Slide Mountain and Barkerville Terranes, Cariboo Mountains, in BC Mines Branch, Exploration and Mining in British Columbia – 1999, pp 65-77.

Logan, J., Turna, R., Doyle, L.E., Diamond Drilling, Geological Mapping, Trenching, Prospecting and Physical Work Assessment Report on the Black Bear and Frank Creek Properties, October 28, 2013. (Assessment Report: 34331).

McKinley, S. D., (2004), Technical Report on the Cariboo Properties of Barker Minerals Ltd. (Including The Frank Creek and Sellers Creek Road Massive Sulphide Projects, the Ace Massive Sulphide and Vein Gold Project, the Kangaroo Copper-Gold Project, the Rollie Creek Project and the Quesnel Platinum Project), July 19, 2004. Report filed with System for Electronic Document Analysis and Retrieval (SEDAR) under authority of Canadian Securities Administrators (CSA), (and as Appendix VI in Assessment Report 27655 by Doyle, L.E. and Appendix I in Assessment Report 28248 by Doyle, L.E.).

Panteleyev, A., Bailey, D.G., Bloodgood, M.A. and Hancock K.D., (1996), Geology and Mineral Deposits of the Quesnel River – Horsefly Map Area, Central Quesnel Trough, British Columbia, NTS Map sheets 93A/5, 6, 7, 11, 12, 13; 93B/9, 16; 93G/1; 93H4, BC Geological Survey Branch Bulletin 97.

Payne, J.G., Preliminary Lithological Report on the Frank Creek VMS Prospect – and the Linecutting and Grid Preparation on the Black Bear, Sellers, Upper Grain, and Tasse Prospects, August 1999. (Assessment Report 26003).

Payne, J.G., Geology, Geochemistry and Geophysics of the Frank Creek, Ace and Sellers Creek Road and Quesnel Platinum Properties, February 2001. (Assessment Report 26504 – includes as Appendix 2: Walcott, P.E., February 2001).

Payne, J.G. and Perry, B.J., Qualification Report on Exploration of the Barker Minerals Ltd. Property, including the Frank Creek, Ace and Sellers Creek Road VMS Projects and the Quesnel Platinum Project, October 25, 2001. Report filed with System for Electronic Document Analysis and Retrieval (SEDAR) under authority of Canadian Securities Administrators (CSA).

Perry, B.J., Report on Exploration of the Barker Minerals Ltd. Property, including the Frank Creek and Sellers Creek Road VMS Projects, the Ace VMS and Vein Gold Project and the Quesnel Platinum Project, October 21, 2002. Engineering Report filed with System for Electronic Document Analysis and Retrieval (SEDAR) under authority of Canadian Securities Administrators (CSA), (and as Appendix 5 in Assessment Report 27125 by Doyle, L.E.).

QUEST Survey: regarding numerous reports and maps see www.geosciencebc.com/s/Quest.asp.

Schiarizza, P., Bedrock Geology and Lode Gold Occurrences, Cariboo Lake to Wells, British Columbia (Parts of NTS 93A/13, 14; 93H/3,4), BC Ministry of Energy, Mines, and Petroleum Resources, Open File 2004-12.

Schiarizza, P. and Ferri, F., Barkerville Terrane, Cariboo Lake to Wells: A New Look at Stratigraphy, Structure and Regional Correlations of the Snowshoe Group, in Geological Fieldwork 2002, B.C. MEMPR, Paper 2003-1.

Struik, L.C., Structural Geology of the Cariboo Gold Mining District, East Central British Columbia, GSC Memoir 421, 1988.

Turna, R. and Doyle, L.E., Geological, Geochemical, Geophysical Trenching, Drilling Assessment Report on the Frank Creek, Cariboo and Peripheral Properties, February 25, 2008. (Assessment Report 29740).

Turna, R., Drilling and Geological Assessment Report on the Frank Creek, Black Bear, Gerimi and Peripheral Properties, February 10, 2009. (Assessment Report 30764).

Turna, R., Diamond Drilling, Prospecting and Physical Work Assessment Report on the Frank Creek and Peripheral Properties, February 20, 2010. (Assessment Report 31389).

Turna, R., Technical Report - Geochemical and Geochemical Assessment Report on the Frank Creek and Black Bear East Properties,, December 13, 2014. (Assessment Report 35012).

Turna R., Geological, Geochemical, Prospecting and Physical Work Assessment Report on the Frank Creek, Black Bear East and Peripheral Properties, February 18, 2015. (Assessment Report 35157).

Turna R., Geochemical Assessment Report on the Ace, Mag and Rollie Creek Properties, July 31, 2015. (Assessment Report 35468).

Turna R., Geochemical Assessment Report on the Ace, Rollie and Black Bear East Properties, November 30, 2015. (Assessment Report 35717).

Turna R., Geological & Geochemical Assessment Report on the Main Group, comprised of the Two Mile Creek, Ace, Black Bear East & Peripheral Properties, March 16, 2016, amended August 6, 2016. (Assessment Report 36040).

Turna, R. Geological, Geochemical, Prospecting and Physical Work Assessment Report on the Frank Creek, Black Bear East and Peripheral Properties. February 18, 2015, amended September 7, 2015. (Assessment Report 35157).

Turna R., Geological & Geochemical Assessment Report on the Rollie - Frank Creek Properties, May 15, 2016, amended August 24, 2016. (Assessment Report 36044).

Turna R., Geological & Geochemical Assessment Report on the Rollie Creek & Frank Creek Properties, July 20, 2016. (Assessment Report 36162).

Turna R., Geochemical Assessment Report on the Kangaroo & Frank Creek Properties, December 31, 2016. (Assessment Report 36449).

Turna R., Geological & Geochemical Assessment Report on the Cariboo Property KAY, SCR and Rollie Areas, March 6, 2018. (Assessment Report 37167).

Turna R., Geological & Geochemical Assessment Report on the Cariboo Lake Property Unlikely & Keithley Areas, November 7, 2018. (Assessment Report 37702).

Turna R., Geochemical Assessment Report on the Cariboo Lake Property, Frank Creek Area, October 30, 2019. (Assessment Report 38552).

Turna R., Geological and Geochemical Assessment Report on the Cariboo Lake Property, Frank Creek Area, February 19, 2020. (Assessment Report 38864).

Walcott, P.E., A Geophysical Report on Ground Electromagnetic and Magnetic Ace, Frank Creek and Sellers Creek Properties, Little River Area, February 2001. (as Appendix 2 in Assessment Report 26504 by Payne J.G.).

Walcott, P.E., A Report on Electromagnetic, Gravity, Induced Polarization, Trenching and Soil Sampling, Ace, Frank Creek and Sellers Creek Properties, March 2002. (Assessment Report 26805).

Walcott, P.E., A Preliminary Report on Electromagnetic, Gravity, Magnetic & Induced Polarization Surveying, Ace & Frank Creek Properties, September 2002. (as Appendix 4 in Assessment Report 27125 by Doyle, L.E.).

Wild, C.J., Preliminary Report on Diamond Drilling and Trenching for the Frank Creek & Ace Projects, June 26, 2002. (as Appendix 3 in Assessment Report 27125 by Doyle, L.E.).

Additional References:

Barker Minerals Ltd. website <http://www.barkerminerals.com/s/Background.asp>

BC Ministry of Energy Mines and Petroleum Resources, Mineral Deposit Models:

Deposit Type G04 - Besshi massive sulphide

APPENDIX D

STATEMENT of AUTHOR'S QUALIFICATIONS

This report was prepared by Louis E. Doyle, Prospector, who has 27 years experience prospecting and managing exploration projects in the Cariboo Region of British Columbia.

APPENDIX E

Statement of Expenditures

Barker Minerals Ltd.

Work was completed between May 25, 2022 to July 3, 2022

Work was done on claim # 1092638

Event # 5941822

Frank Creek Property - Geological

	Date	Days	Rate	Sub-total
Louis Doyle				
Report writing		3	\$ 600.00	\$ 1,800.00
Room & board		3	\$ 100.00	\$ 300.00
Brenda Bye				
Map drafting		1	\$ 500.00	\$ 500.00
Colleen Doyle				
Report compilation and filing		2	\$ 300.00	\$ 600.00
Room & board		2	\$ 100.00	\$ 200.00
				<u>\$ 3,400.00</u>

Frank Creek Property - Geological

Brian Hall				
Till sediment collection	June 6, 2022	1	\$ 600.00	\$ 600.00
Till sediment collection	June 7, 2022	1	\$ 600.00	\$ 600.00
Till sediment collection	June 8, 2022	1	\$ 600.00	\$ 600.00
Vehicle & gas		3	\$ 150.00	\$ 450.00
Room & board		3	\$ 100.00	\$ 300.00
Louis Doyle				
Till sediment collection	June 6, 2022	1	\$ 600.00	\$ 600.00
Till sediment collection	June 7, 2022	1	\$ 600.00	\$ 600.00
Till sediment collection	June 8, 2022	1	\$ 600.00	\$ 600.00
Vehicle & gas		3	\$ 150.00	\$ 450.00
Room & board		3	\$ 100.00	\$ 300.00
Louis Doyle				
Panning samples	June 9, 2022	1	\$ 600.00	\$ 600.00
Panning samples	June 10, 2022	1	\$ 600.00	\$ 600.00
Room & board		2	\$ 100.00	\$ 200.00
Brian Hall				
Panning samples	June 9, 2022	1	\$ 600.00	\$ 600.00
Panning samples	June 10, 2022	1	\$ 600.00	\$ 600.00
Room & board		2	\$ 100.00	\$ 200.00
				<u>\$ 7,900.00</u>

Barker Minerals Ltd.

Work was completed between May 25, 2022 to July 3, 2022

Work was done on claim # 1092638

Event # 5941822

Frank Creek Property - Geochemical

Brian Hall

XRF operator	June 11, 2022	0.5	\$	600.00	\$	300.00
XRF rental		0.5	\$	200.00	\$	100.00
						\$ 400.00

Frank Creek Property - Travel

Brian Hall

Travel in/out	June 5, 2022	1	\$	600.00	\$	600.00
Room & board		1	\$	100.00	\$	100.00
Vehicle & gas		1	\$	150.00	\$	150.00

Louis Doyle

Travel in/out	June 5, 2022	1	\$	600.00	\$	600.00
Room & board		1	\$	100.00	\$	100.00
Vehicle & gas		1	\$	150.00	\$	150.00
						\$ 1,700.00

Frank Creek Property - Misc. expenditures

Safety equipment (MTC), exploration supplies & equipment, communication devices & quad

Exploration supplies & equipment					\$	105.00
First aid equipment		3	\$	100.00	\$	300.00
Quad rental		3	\$	100.00	\$	300.00

Communication devices

Hand held radios, satellite phones & SPOT locators		3	\$	24.00	\$	72.00
						Sub-total \$ 777.00

Frank Creek Property Expenditure Summary

Geological Office	Sub-total	\$	3,400.00
Geological	Sub-total	\$	7,900.00
Geochemical	Sub-total	\$	400.00
Travel	Sub-total	\$	1,700.00
Misc. expenditures	Sub-total	\$	777.00
		Ace Expenditure Total	\$ 14,177.00

APPENDIX F

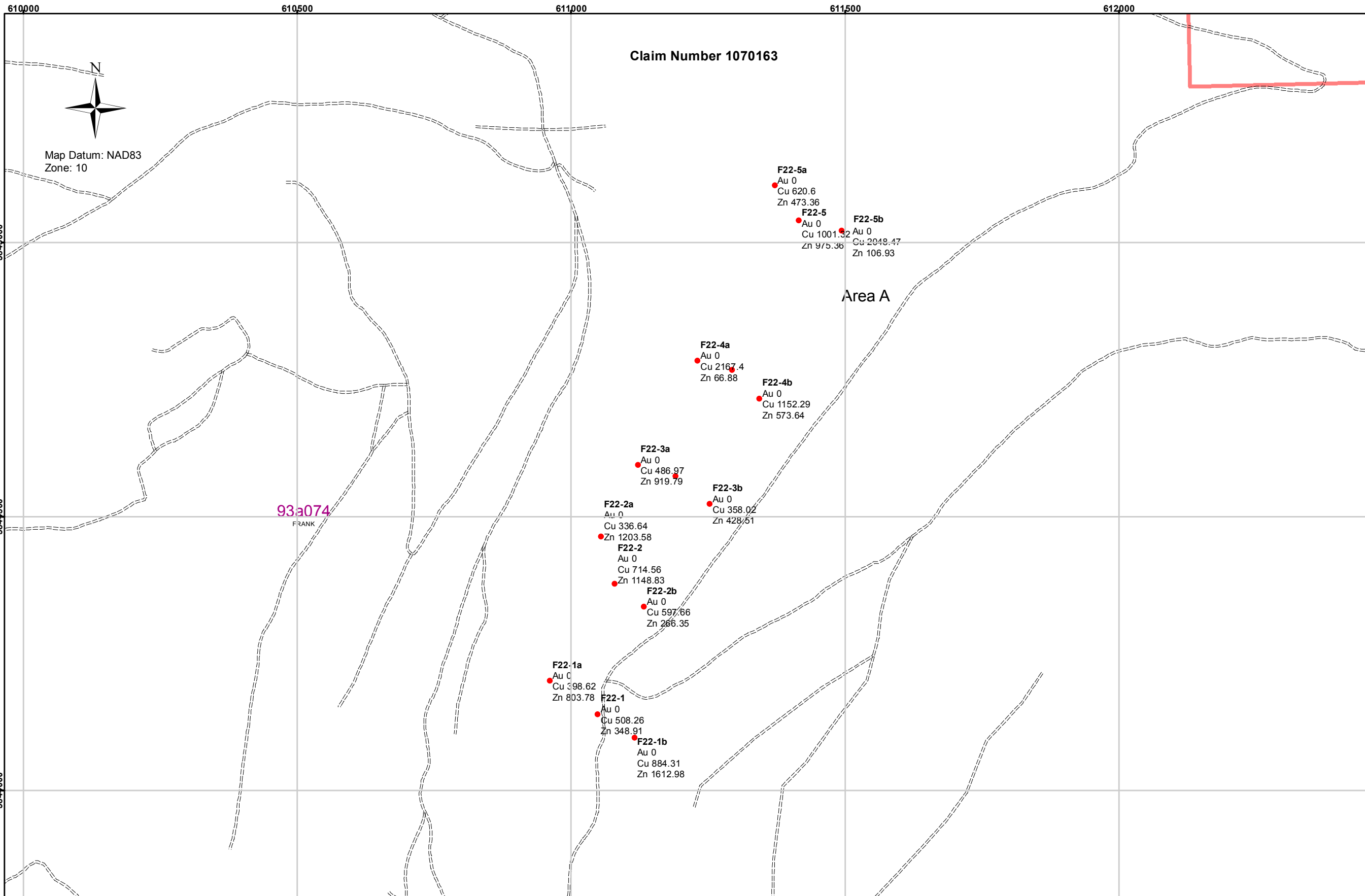
Sample Locations and Descriptions

Appendix F - Frank Creek Property - Till and Stream Sampling 2022 Locations

Field No.	Appendix	Type	Easting (X)	Northing (Y)	Description
F22-1	Appendix - F	Till.Sed	611049	5844139	blue clay in stream flow
F22-1a	Appendix - F	Till.Sed	610961	5844200	N slope from F22-1 deep till
F22-1b	Appendix - F	Till.Sed	611116	5844096	S slope from F22-1 deep till
F22-2	Appendix - F	Till.Sed	611080	5844377	blue clay in stream flow
F22-2a	Appendix - F	Till.Sed	611055	5844463	N slope from F22-2 deep till
F22-2b	Appendix - F	Till.Sed	611133	5844335	S slope from F22-2 deep till
F22-3	Appendix - F	Till.Sed	611191	5844574	blue clay in stream flow
F22-3a	Appendix - F	Till.Sed	611122	5844594	N slope from F22-3 deep till
F22-3b	Appendix - F	Till.Sed	611253	5844523	S slope from F22-3 deep till
F22-4	Appendix - F	Till.Sed	611294	5844767	blue clay in stream flow
F22-4a	Appendix - F	Till.Sed	611231	5844784	N slope from F22-4 deep till
F22-4b	Appendix - F	Till.Sed	611344	5844715	S slope from A22-4 deep till
F22-5	Appendix - F	Till.Sed	611416	5845040	Culvert Sed sample - blue clay
F22-5a	Appendix - F	Till.Sed	611372	5845104	N slope from A22-5 deep till
F22-5b	Appendix - F	Till.Sed	611494	5845022	S slope from A22-5 deep till

APPENDIX G

Geochemical Map and XRF Sample Results



Frank Creek Property Area A
Geochemical Map

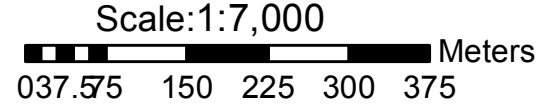
Til & Sediment Samples XRF Results (ppm)

Sample No.	Au (ppm)	Cu (ppm)	Zn (ppm)
F22-1	0	508.26	348.91
F22-1a	0	398.62	803.78
F22-1b	0	884.31	1612.98
F22-2	0	714.56	1148.83
F22-2a	0	336.64	1203.58
F22-2b	0	597.66	266.35
F22-3	0	1098.87	1449.67
F22-3a	0	486.97	919.79
F22-3b	0	358.02	428.51
F22-4	0	1343.62	1313.08
F22-4a	0	2167.4	66.88
F22-4b	0	1152.29	573.64
F22-5	0	1001.32	975.36
F22-5a	0	620.6	473.36
F22-5b	0	2048.47	106.93

Results below level of detection are not shown.
Zn, Cu results over 100 ppm marked in red.
See table No. ___ for XRF results.

- Legend**
- Til & Sediment Sample Locations
 - Frank Creek Claim
 - BC Mapsheets
 - Lakes/Rivers
 - Stream
 - Roads

Appendix G



Drawn by: B.Bye, Nortech Forestry Ltd. Quesnel, BC

Barker Minerals Ltd.
Frank Creek Property
Area A
Til & Sediment Locations, numbers
and Cu, Zn, Au Geochemistry
Cariboo Mining Division, B.C.
Date: Dec. 12, 2022 Mapsheet: 93A074
Claim Number: 1070163

Sample #	Mo	Zr	Sr	U	Rb	Th	Pb	Se	As	Hg	Au	Zn
F22-1	< LOD	< LOD	8.56	< LOD	< LOD	< LOD	204.74	< LOD	29.93	< LOD	< LOD	348.91
F22-1a	18.83	< LOD	< LOD	< LOD	< LOD	< LOD	92025.23	216.93	2145.6	< LOD	< LOD	803.78
F22-1b	< LOD	< LOD	< LOD	< LOD	< LOD	< LOD	944.2	< LOD	183.23	< LOD	< LOD	1612.98
F22-2	< LOD	< LOD	< LOD	< LOD	< LOD	< LOD	819.85	< LOD	105.62	< LOD	< LOD	1148.83
F22-2a	< LOD	6.55	59.74	< LOD	4.1	< LOD	29.91	< LOD	7.4	< LOD	< LOD	1203.58
F22-2b	< LOD	4.56	17	< LOD	< LOD	< LOD	75.51	< LOD	17.43	12.59	< LOD	266.35
F22-3	< LOD	24.49	41.35	13.77	2.32	< LOD	63.22	< LOD	75.19	< LOD	< LOD	1449.67
F22-3a	< LOD	3.14	13.64	9.2	< LOD	< LOD	32.05	< LOD	90.12	9.9	< LOD	919.79
F22-3b	< LOD	< LOD	< LOD	< LOD	< LOD	< LOD	425.05	< LOD	101.91	< LOD	< LOD	428.51
F22-4	< LOD	< LOD	< LOD	< LOD	2.75	< LOD	10591.9	25.22	504.33	< LOD	< LOD	1313.08
F22-4a	< LOD	< LOD	< LOD	< LOD	< LOD	< LOD	97698.37	444.31	3877.13	< LOD	< LOD	66.88
F22-4b	< LOD	< LOD	< LOD	< LOD	< LOD	< LOD	34953.38	182.34	2373.95	< LOD	< LOD	573.64
F22-5	49.04	258.22	35.09	20.17	43.18	< LOD	4499.32	< LOD	632.77	< LOD	< LOD	975.36
F22-5a	< LOD	18.97	7.4	< LOD	6	< LOD	989.49	< LOD	149.47	< LOD	< LOD	473.36
F22-5b	< LOD	15.01	27.39	< LOD	8.08	< LOD	227.89	< LOD	99.46	< LOD	< LOD	106.93

Sample #	Y	Bi	Cr	V	Ti
F22-1	< LOD	< LOD	108.76	< LOD	< LOD
F22-1a	< LOD	< LOD	83.01	19.24	256.33
F22-1b	< LOD	25.39	55.22	< LOD	< LOD
F22-2	< LOD	< LOD	78.46	< LOD	< LOD
F22-2a	< LOD	< LOD	61.57	34.48	763.36
F22-2b	< LOD	21.13	69.12	177.61	612.88
F22-3	1.74	< LOD	117.05	41.53	750.84
F22-3a	< LOD	17.94	34.33	< LOD	372.28
F22-3b	< LOD	< LOD	53.3	< LOD	64.17
F22-4	< LOD	< LOD	< LOD	< LOD	< LOD
F22-4a	< LOD	< LOD	137.04	25.77	253.22
F22-4b	< LOD	< LOD	< LOD	< LOD	< LOD
F22-5	6.53	< LOD	247.22	138.29	4062.3
F22-5a	< LOD	< LOD	119.25	< LOD	1634.61
F22-5b	< LOD	< LOD	116.51	35.82	718.23